

<b>PROJECT No.:</b> 170430003 <b>PROJECT:</b> 240 Huntington Street <b>LOCATION:</b> Brooklyn, New York <b>BCP SITE NO:</b> C224314	<b>CLIENT:</b> 300 Huntington Street LLC	<b>DATE:</b> Thursday, December 29, 2022 <b>WEATHER:</b> Sunny, 33-48 °F Wind: N @ 3.5 – 5.6 mph <b>TIME:</b> 6:45 am – 3:30 pm <b>MONITORS:</b> Pradeep Pandey
<b>EQUIPMENT:</b> Hand Tools Bobcat E50 Mini Excavator Kolbeco Excavator Deere 245C Excavator Takeuchi TL10V2	<b>PRESENT AT SITE:</b> <b>Langan:</b> Pradeep Pandey <b>Bauer Structures (Bauer):</b> George Lopez <b>Monadnock Construction Inc. (Monadnock):</b> David Parlo <b>Urban Erectors (Urban):</b> Ricky Persaud	

**OBSERVATIONS, DISCUSSIONS, TEST RESULTS, ETC.:**

Langan Engineering, Environmental, Surveying, Landscape Architecture and Geology, D.P.C. (Langan) was present to document site remediation in accordance with the New York State Department of Environmental Conservation (NYSDEC)-approved Remedial Action Work Plan (RAWP) for the BCP Site No. C224314.

**Site Activities**

- Bauer partially backfilled the area around utility conduits with imported clean fill from Evergreen Recycling of Corona Inc. in Flushing, NY (EROG) in the northwestern part of the site and around utility conduits in the south-central part of the site.
- Urban Erectors (Urban) installed steel elements in the central and eastern parts of the site.

**Material Tracking**

- Bauer imported three truckloads of clean fill from Evergreen Recycling of Corona Inc. in Flushing, NY.
- No material was exported from the site.

**Sampling**

- None.

**CAMP Activities**

Community air monitoring was performed at the perimeters of the site at two locations (upwind and downwind) for particulate matter less than 10 µm in diameter (PM10) and volatile organic compounds (VOC).

- VOC concentrations were recorded above the action levels established in the site Community Air Monitoring Plan (CAMP). The exceedances were observed between 14:46 to 14:54 due to spray painting in the vicinity of the CAMP station. VOC concentrations decreased once painting activities ceased.
- PM10 concentrations did not exceed action levels.
- Dust and odors were not observed migrating off-site throughout the day.
- Refer to the attached Daily Air Monitoring Report for summary and raw CAMP results.

**Anticipated Activities**

- Urban Erectors will install steel elements on the building foundation.
- Bauer will backfill around installed utility conduits.

## 240 HUNTINGTON STREET CONSTRUCTION/FOUNDATION - EXPORT SUMMARIES

### MATERIALS EXPORT SUMMARY

<b>Facility Name</b>	<i>Clean Earth of Carteret</i>		<i>Allocco Recycling</i>		<i>Advanced Waste Water Treatment Corp.</i>		<i>Allocco Recycling</i>	
<b>Location</b>	<i>Middlesex, NJ</i>		<i>Brooklyn, NY</i>		<i>Farmingdale, NY</i>		<i>Brooklyn, NY</i>	
<b>Type of Waste</b>	<i>Non-Hazardous Soil</i>		<i>Concrete</i>		<i>Water with Trace Gasoline</i>		<i>Scrap Metal</i>	
Today	Number of Loads	Approx. Volume (CY)	Number of Loads	Approx. Volume (CY)	Number of Loads	Approx. Volume (CY)	Number of Loads	Approx. Volume (CY)
	0	-	0	-	0	-	0	-
Total	Number of Loads	Approx. Volume (CY)	Number of Loads	Approx. Volume (CY)	Number of Loads	Approx. Volume (CY)	Number of Loads	Approx. Volume (CY)
	363	9,095	26	515	2	30	2	30

### MATERIALS EXPORT SUMMARY

<b>Facility Name</b>	<i>Clean Earth Of Southeastern Pennsylvania</i>		<i>Clean Earth of North Jersey</i>					
<b>Location</b>	<i>Brooklyn, NY</i>		<i>Kearney, NJ</i>					
<b>Type of Material</b>	<i>Non-Hazardous Soil</i>		<i>Hazardous Soil</i>					
Today	Number of Loads	Approx. Volume (CY)	Number of Loads	Approx. Volume (CY)	Number of Loads	Approx. Volume (CY)	Number of Loads	Approx. Volume (CY)
	0	-	0	-	0	-	0	-
Total	Number of Loads	Approx. Volume (CY)	Number of Loads	Approx. Volume (CY)	Number of Loads	Approx. Volume (CY)	Number of Loads	Approx. Volume (CY)
	63	1,440	3	54	0	-	0	-

## 240 HUNTINGTON STREET CONSTRUCTION/FOUNDATION - IMPORT SUMMARIES

### MATERIALS IMPORT SUMMARY

Facility Name	<i>Tilcon New York Inc. - Mount Hope Quarry</i>		<i>Tilcon New York Inc. - Mount Hope Quarry</i>		<i>Clean Soil Bank (CSB) Forbell Street Stockpile</i>		<i>DOT RCA Stockpile - DOT Sunset Park Yard</i>	
Location	<i>Wharton, NJ</i>		<i>Wharton, NJ</i>		<i>Brooklyn, NY</i>		<i>Brooklyn, NY</i>	
Type of Material	<i>ASTM #3 Stone</i>		<i>ASTM #5 Stone</i>		<i>Soil</i>		<i>RCA</i>	
Today	Number of Loads	Volume (tons)	Number of Loads	Volume (tons)	Number of Loads	Volume (CY)	Number of Loads	Volume (CY)
	0	-	0	-	0	-	0	-
Total	Number of Loads	Volume (tons)	Number of Loads	Volume (tons)	Number of Loads	Volume (CY)	Number of Loads	Volume (CY)
	9	224.62	36	933.90	46	920	197	3,940
NYSDEC-Approved Quantity	-	540*	-	1,800*	-	7,000	-	4,000

\* - ASTM #3 stone and ASTM #5 stone from Tilcon New York Inc. Mount Hope Quarry were approved for import of 300 cubic yards (CY) and 1,000 CY, respectively. Assuming a conversation factor of 1.8, each quantity was converted to tons in order to accurately compare with import weight tickets.

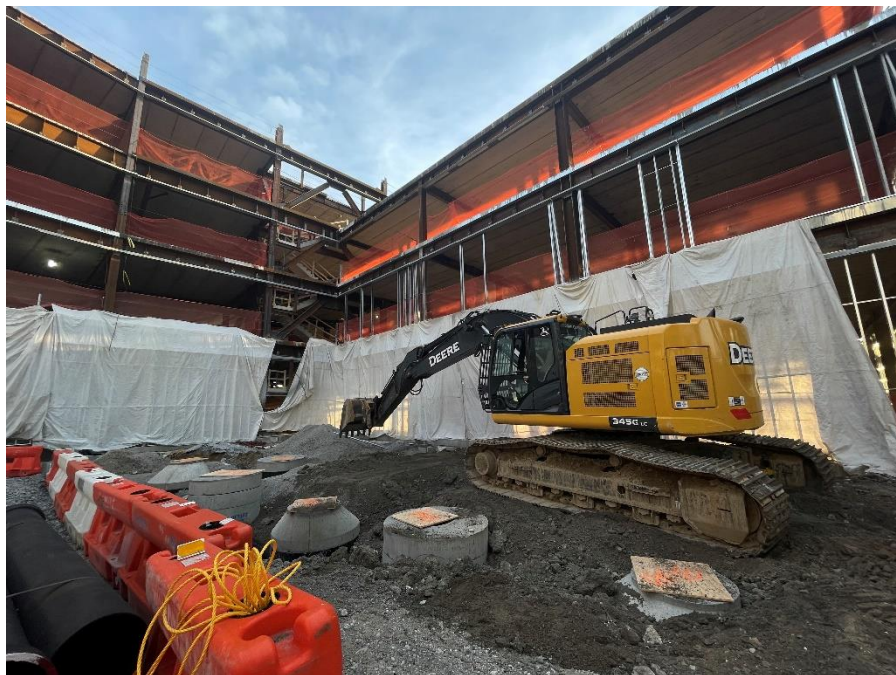
### MATERIALS IMPORT SUMMARY

Facility Name	<i>Evergreen Recycling of Corona Inc.</i>							
Location	<i>Flushing, NY</i>							
Type of Material	<i>Clean Fill</i>							
Today	Number of Loads	Volume (CY)	Number of Loads	Approx. Volume (CY)	Number of Loads	Approx. Volume (CY)	Number of Loads	Approx. Volume (CY)
	3	60	0	-	0	-	0	-
Total	Number of Loads	Volume (CY)	Number of Loads	Approx. Volume (CY)	Number of Loads	Approx. Volume (CY)	Number of Loads	Approx. Volume (CY)
	219	4,192	0	-	0	-	0	-
NYSDEC-Approved Quantity	-	6,000						

## Site Photos



**Photo 1:** Bauer backfilling with imported clean fill from EROC in the northwestern part of the site (facing southeast)



**Photo 2:** Bauer backfilling with general fill in the south-central part of the site (facing northeast)

## Site Map:



### LEGEND

- Approximate Site Boundary
- Upwind CAMP Station
- Downwind CAMP Station
- Approximate Excavation Area
- Approximate Area Previously Excavated
- Approximate Graded Area
- Approximate Backfill Area
- Approximate Location of UST
- Soil/Fill Stockpile
- RCA/Imported Stone Stockpiled
- Approximate SMD Trench Excavation
- Approximate SMD Backfill Area
- Approximate Location of Completed Building Slab

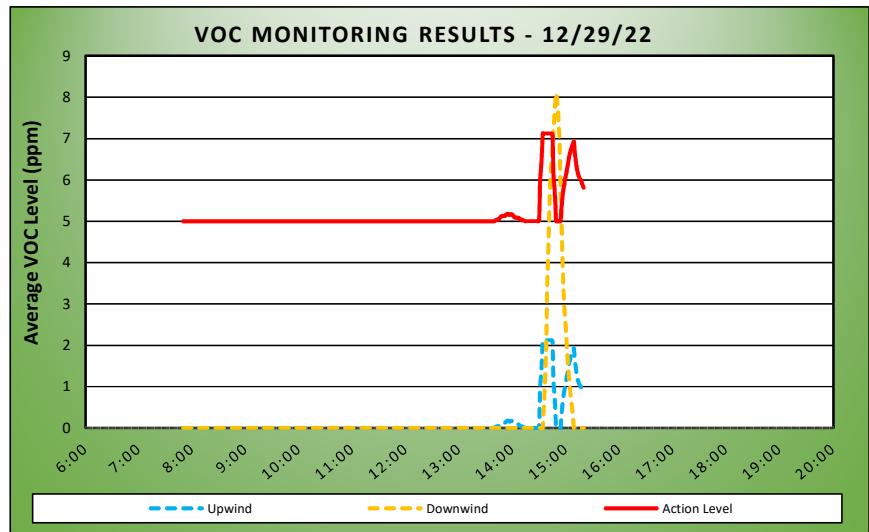
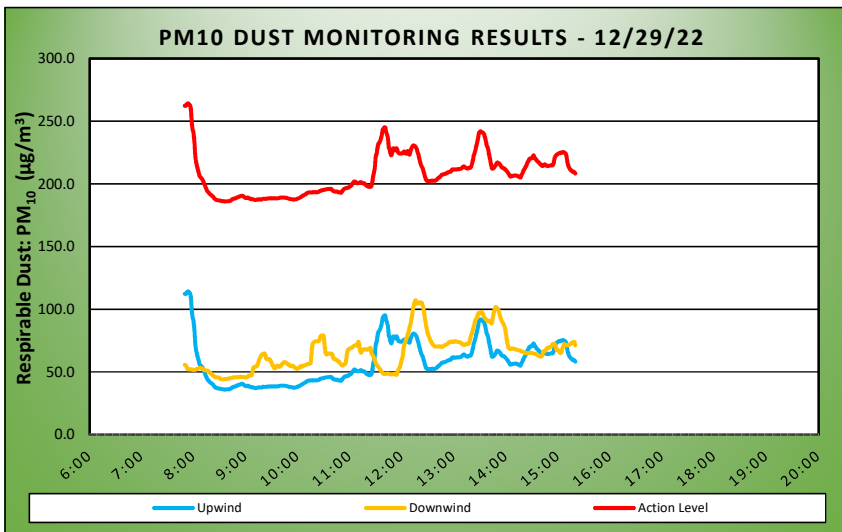
Note: Drawing background from December 2021 Remedial Investigation Report by Langan Engineering.

Drawing Shown Not to Scale

	<h2 style="text-align: center;">DAILY AIR MONITORING REPORT</h2> <p style="text-align: center;"><b>240 Huntington Street</b> <b>Brooklyn, New York</b></p>				12/29/22	
					Project number: 170430003	
					Page 1 of 1	Rev. No. 0
					Submitted By:	
					Dust Action Level	150 $\mu\text{g}/\text{m}^3$
TVOC Action Level	5 ppm					

Weather Data Range for Work Day		Wind Direction	SW	Relative Humidity (%)	43.0 - 70.0	Daily Rain (in)	0.00	Readings in the summary table and graphs below are the reported downwind concentrations.
Temp (°F)	37.0 - 53.0	Wind Speed (MPH)	0.8 - 3.9	Barometer (inHg)	30.30 - 30.40			

Station Location Work Area	Daily Avg. Dust Concentration ( $\mu\text{g}/\text{m}^3$ )	Max 15 Min Dust Concentration ( $\mu\text{g}/\text{m}^3$ )	Time of Maximum 15 Minute Avg Dust Reading	Daily Avg. VOC Concentration (ppm)	Max 15 Min VOC Concentration (ppm)	Time of Max VOC Reading
Upwind	58.0	114.2	7:54	0.2	2.1	14:34
Downwind	65.7	107.2	12:16	0.3	8.1	14:49



Air Monitoring Notes:

Sampling Notes:

Weather Notes: