

NYSDEC Site C224218 - Former Carter Spray Finishing Site
65 Eckford Street, Brooklyn, NY
File No. 0202156
Date Photographs Taken: 27 October 2021



Photo 1: Pre-work view of the site facing west.



Photo 2: View of truck loading.

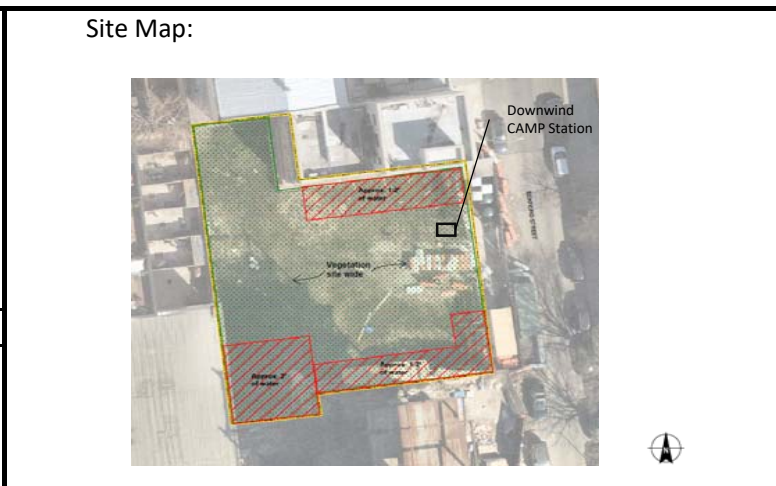


Photo 3: Post-work view of the site facing west.

NYSDEC Site C224218 - Former Carter Spray Finishing Site
 65 Eckford Street, Brooklyn, NY
 0202156-000
 Air Monitoring Log

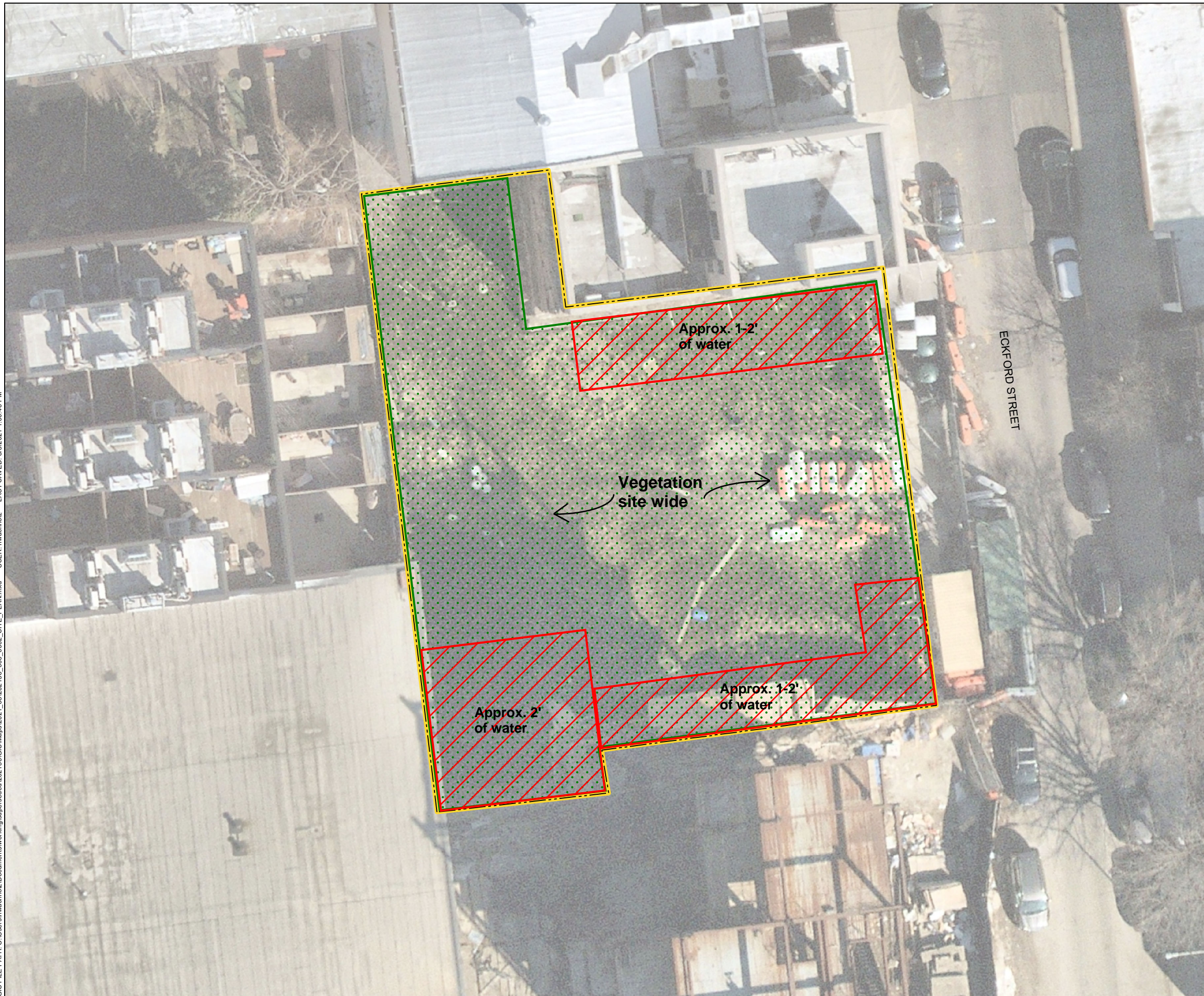
Date: 10/27/2021
 Personnel: D. Fu
 Weather: Cloudy
 Humidity: 74%
 Temperature: 60° F
 Wind Direction: N

Particulate Background ($\mu\text{g}/\text{m}^3$): 0.001
 PID Background (ppm): 0.0



Time	Dust Particulates ($\mu\text{g}/\text{m}^3$)	PID (ppm)	Odors (y/n)	Notes/Comments
	Downwind	Downwind		
800	0.001	0.0	N	
815	0.001	0.1	N	
830	0.001	0.4	N	
845	0.004	0.3	N	
900	0.002	0.1	N	
915	0.001	0.4	N	
930	0.012	0.3	N	
945	0.001	0.3	N	
1000	0.002	0.1	N	
1015	0.002	0.2	N	
1030	0.004	0.3	N	
1045	0.004	0.0	N	
1100	0.004	0.3	N	
1115	0.006	0.1	N	
1130	0.006	0.0	N	
1145	0.005	0.1	N	
1200	0.005	0.0	N	
1215	0.006	0.3	N	

GIS FILE PATH: C:\Users\hwacholz\Documents\working\pers\esd\2021\56\GIS\Maps\2021_08\202156_000_0002_SITE_PLAN.mxd — USER: hwacholz — LAST SAVED: 8/2/2021 1:00:46 PM



LEGEND

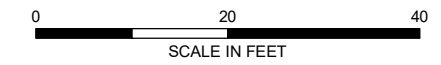
 SITE BOUNDARY

Field Notes:

1. 95% of site is covered in thick vegetation (i.e. reeds and weeds).
1. Excavation depth site wide is approx. 6' bgs (potential to be deeper as site gently slopes to the west).
3. Existing construction ramp located in the central portion of the site and contains gravel.
4. Debris and garbage located within the excavation and entrance area.
5. One permanent groundwater monitoring well observed in the southwestern corner of the site (i.e. in sidewalk within construction fence).

NOTES

1. ALL LOCATIONS ARE APPROXIMATE.
2. AERIAL IMAGERY SOURCE: NEARMAP, 12 MARCH 2021



HALEY ALDRICH 65 ECKFORD STREET
BROOKLYN, NEW YORK

SITE PLAN

AUGUST 2021

FIGURE 1