

74 20th Street

74 20th Street

Brooklyn, NY 11232

Inquiry Number: 6012679.3

March 17, 2020

## Certified Sanborn® Map Report



6 Armstrong Road, 4th floor  
Shelton, CT 06484  
Toll Free: 800.352.0050  
[www.edrnet.com](http://www.edrnet.com)

# Certified Sanborn® Map Report

03/17/20

**Site Name:**

74 20th Street  
74 20th Street  
Brooklyn, NY 11232  
EDR Inquiry # 6012679.3

**Client Name:**

Roux Associates  
209 Shafter Street  
Islandia, NY 11749  
Contact: Frank Cherena



The Sanborn Library has been searched by EDR and maps covering the target property location as provided by Roux Associates were identified for the years listed below. The Sanborn Library is the largest, most complete collection of fire insurance maps. The collection includes maps from Sanborn, Bromley, Perris & Browne, Hopkins, Barlow, and others. Only Environmental Data Resources Inc. (EDR) is authorized to grant rights for commercial reproduction of maps by the Sanborn Library LLC, the copyright holder for the collection. Results can be authenticated by visiting [www.edrnet.com/sanborn](http://www.edrnet.com/sanborn).

The Sanborn Library is continually enhanced with newly identified map archives. This report accesses all maps in the collection as of the day this report was generated.

**Certified Sanborn Results:**

**Certification #** 2D1A-4291-B4EB

**PO #** NA

**Project** Sunset Park - FC

**Maps Provided:**

2007	1995	1985	1965
2006	1994	1982	1951
2005	1993	1981	1950
2004	1992	1980	1938
2003	1991	1979	1928
2002	1988	1978	1926
2001	1987	1977	1922
1996	1986	1969	1915



Sanborn® Library search results

Certification #: 2D1A-4291-B4EB

The Sanborn Library includes more than 1.2 million fire insurance maps from Sanborn, Bromley, Perris & Browne, Hopkins, Barlow and others which track historical property usage in approximately 12,000 American cities and towns. Collections searched:

- ☒ Library of Congress
- ☒ University Publications of America
- ☒ EDR Private Collection

The Sanborn Library LLC Since 1866™

**Limited Permission To Make Copies**

Roux Associates (the client) is permitted to make up to FIVE photocopies of this Sanborn Map transmittal and each fire insurance map accompanying this report solely for the limited use of its customer. No one other than the client is authorized to make copies. Upon request made directly to an EDR Account Executive, the client may be permitted to make a limited number of additional photocopies. This permission is conditioned upon compliance by the client, its customer and their agents with EDR's copyright policy; a copy of which is available upon request.

**Disclaimer - Copyright and Trademark Notice**

This Report contains certain information obtained from a variety of public and other sources reasonably available to Environmental Data Resources, Inc. It cannot be concluded from this Report that coverage information for the target and surrounding properties does not exist from other sources. NO WARRANTY EXPRESSED OR IMPLIED, IS MADE WHATSOEVER IN CONNECTION WITH THIS REPORT. ENVIRONMENTAL DATA RESOURCES, INC. SPECIFICALLY DISCLAIMS THE MAKING OF ANY SUCH WARRANTIES, INCLUDING WITHOUT LIMITATION, MERCHANTABILITY OR FITNESS FOR A PARTICULAR USE OR PURPOSE. ALL RISK IS ASSUMED BY THE USER. IN NO EVENT SHALL ENVIRONMENTAL DATA RESOURCES, INC. BE LIABLE TO ANYONE, WHETHER ARISING OUT OF ERRORS OR OMISSIONS, NEGLIGENCE, ACCIDENT OR ANY OTHER CAUSE, FOR ANY LOSS OF DAMAGE, INCLUDING, WITHOUT LIMITATION, SPECIAL, INCIDENTAL, CONSEQUENTIAL, OR EXEMPLARY DAMAGES. ANY LIABILITY ON THE PART OF ENVIRONMENTAL DATA RESOURCES, INC. IS STRICTLY LIMITED TO A REFUND OF THE AMOUNT PAID FOR THIS REPORT. Purchaser accepts this Report "AS IS". Any analyses, estimates, ratings, environmental risk levels or risk codes provided in this Report are provided for illustrative purposes only, and are not intended to provide, nor should they be interpreted as providing any facts regarding, or prediction or forecast of, any environmental risk for any property. Only a Phase I Environmental Site Assessment performed by an environmental professional can provide information regarding the environmental risk for any property. Additionally, the information provided in this Report is not to be construed as legal advice. Copyright 2020 by Environmental Data Resources, Inc. All rights reserved. Reproduction in any media or format, in whole or in part, of any report or map of Environmental Data Resources, Inc., or its affiliates, is prohibited without prior written permission.

EDR and its logos (including Sanborn and Sanborn Map) are trademarks of Environmental Data Resources, Inc. or its affiliates. All other trademarks used herein are the property of their respective owners.

## Sanborn Sheet Key

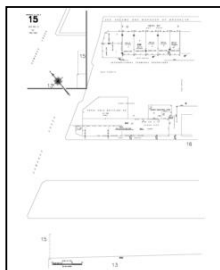
This Certified Sanborn Map Report is based upon the following Sanborn Fire Insurance map sheets.



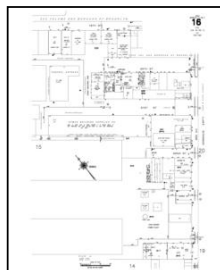
### 2007 Source Sheets



Volume 1, Sheet 44  
2007

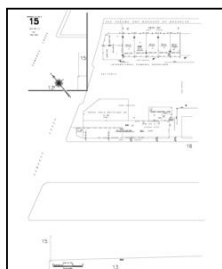


Volume 6, Sheet 15  
2007



Volume 6, Sheet 16  
2007

### 2006 Source Sheets



Volume 6, Sheet 15  
2006

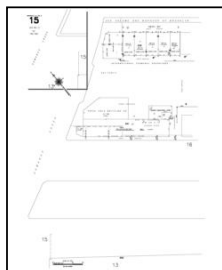


Volume 6, Sheet 16  
2006

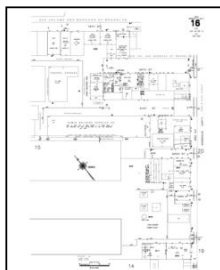


Volume 1, Sheet 44  
2006

### 2005 Source Sheets



Volume 6, Sheet 15  
2005

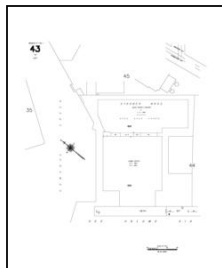


Volume 6, Sheet 16  
2005



Volume 1, Sheet 44  
2005

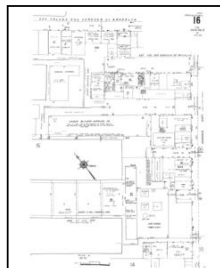
### 2004 Source Sheets



Volume 1, Sheet 43  
2004



Volume 1, Sheet 44  
2004



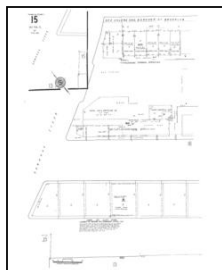
Volume 6, Sheet 16  
2004

## Sanborn Sheet Key

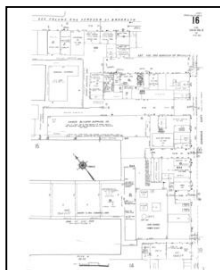
This Certified Sanborn Map Report is based upon the following Sanborn Fire Insurance map sheets.



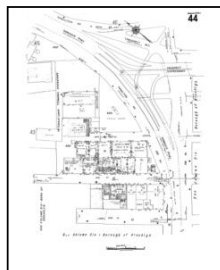
### 2003 Source Sheets



Volume 6, Sheet 15  
2003



Volume 6, Sheet 16  
2003



Volume 1, Sheet 44  
2003

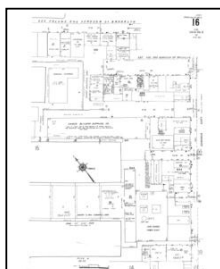


Volume 6, Sheet 20  
2003

### 2002 Source Sheets

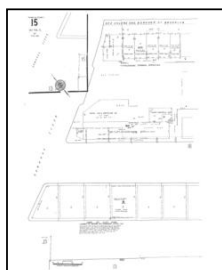


Volume 1, Sheet 44  
2002

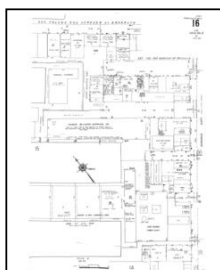


Volume 6, Sheet 16  
2002

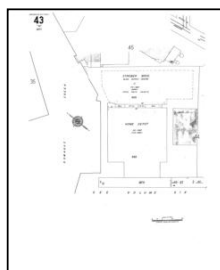
### 2001 Source Sheets



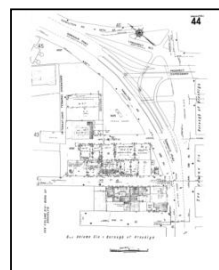
Volume 6, Sheet 15  
2001



Volume 6, Sheet 16  
2001



Volume 1, Sheet 43  
2001



Volume 1, Sheet 44  
2001

### 1996 Source Sheets



Volume 1, Sheet 43  
1996



Volume 1, Sheet 44  
1996

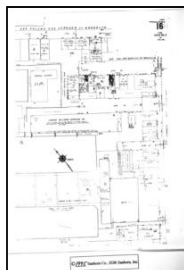


## Sanborn Sheet Key

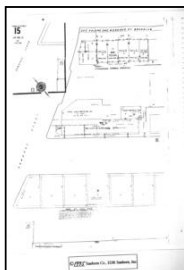
This Certified Sanborn Map Report is based upon the following Sanborn Fire Insurance map sheets.



### 1995 Source Sheets



Volume 6, Sheet 16  
1995

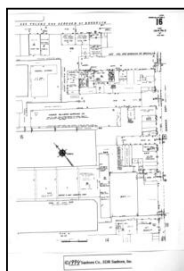


Volume 6, Sheet 15  
1995



Volume 1, Sheet 44  
1995

### 1994 Source Sheets

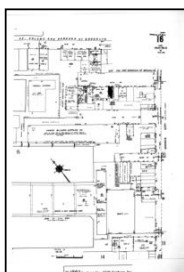


Volume 6, Sheet 16  
1994

### 1993 Source Sheets

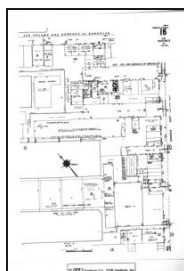


Volume 1, Sheet 44  
1993

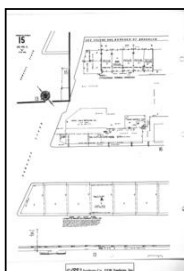


Volume 6, Sheet 16  
1993

### 1992 Source Sheets



Volume 6, Sheet 16  
1992



Volume 6, Sheet 15  
1992



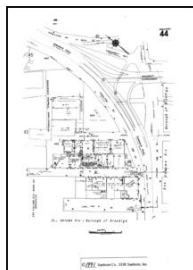
Volume 1, Sheet 44  
1992

## Sanborn Sheet Key

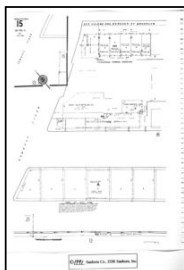
This Certified Sanborn Map Report is based upon the following Sanborn Fire Insurance map sheets.



### 1991 Source Sheets



Volume 1, Sheet 44  
1991

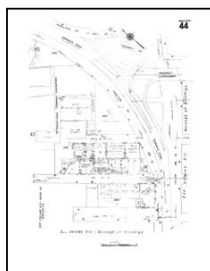


Volume 6, Sheet 15  
1991

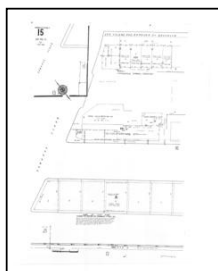


Volume 6, Sheet 16  
1991

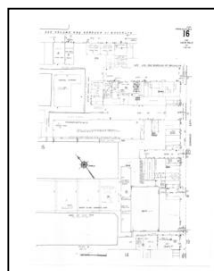
### 1988 Source Sheets



Volume 1, Sheet 44  
1988

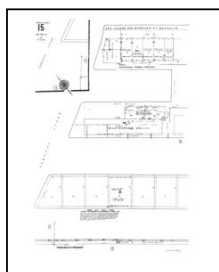


Volume 6, Sheet 15  
1988

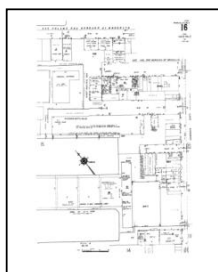


Volume 6, Sheet 16  
1988

### 1987 Source Sheets



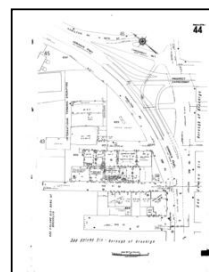
Volume 6, Sheet 15  
1987



Volume 6, Sheet 16  
1987

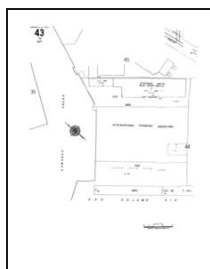


Volume 1, Sheet 43  
1987

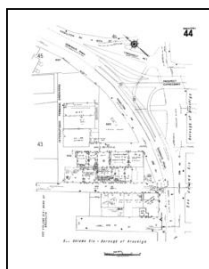


Volume 1, Sheet 44  
1987

### 1986 Source Sheets



Volume 1, Sheet 43  
1986



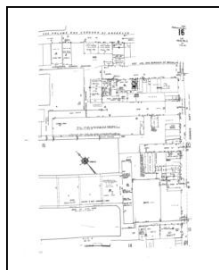
Volume 1, Sheet 44  
1986

## Sanborn Sheet Key

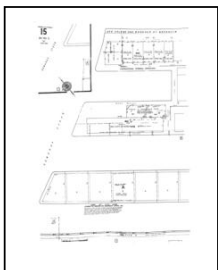
This Certified Sanborn Map Report is based upon the following Sanborn Fire Insurance map sheets.



### 1985 Source Sheets

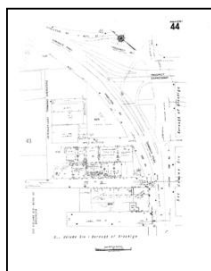


Volume 6, Sheet 16  
1985

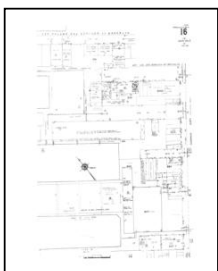


Volume 6, Sheet 15  
1985

### 1982 Source Sheets



Volume 1, Sheet 44  
1982



Volume 6, Sheet 16  
1982

### 1981 Source Sheets

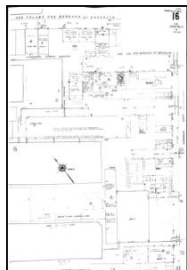


Volume 1, Sheet 43  
1981

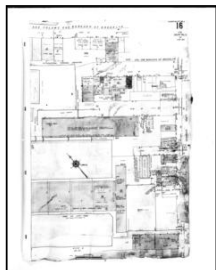


Volume 1, Sheet 44  
1981

### 1980 Source Sheets



Volume 6, Sheet 16  
1980



Volume 6, Sheet 16  
1980



Volume 1, Sheet 44  
1980

## Sanborn Sheet Key

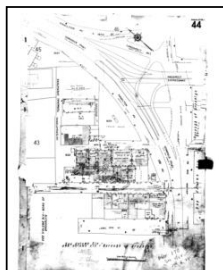
This Certified Sanborn Map Report is based upon the following Sanborn Fire Insurance map sheets.



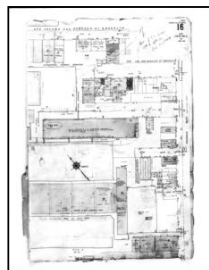
### 1979 Source Sheets



Volume 1, Sheet 43  
1979

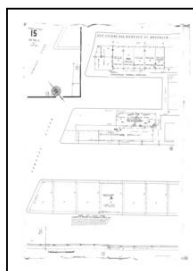


Volume 1, Sheet 44  
1979

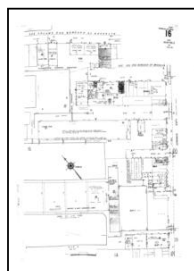


Volume 6, Sheet 16  
1979

### 1978 Source Sheets



Volume 6, Sheet 15  
1978

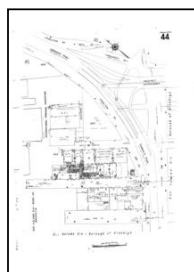


Volume 6, Sheet 16  
1978

### 1977 Source Sheets

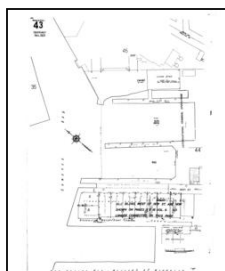


Volume 1, Sheet 43  
1977



Volume 1, Sheet 44  
1977

### 1969 Source Sheets



Volume 1, Sheet 43  
1969



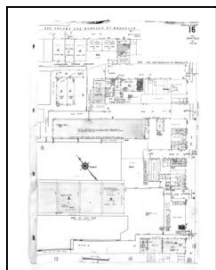
Volume 1, Sheet 44  
1969

## Sanborn Sheet Key

This Certified Sanborn Map Report is based upon the following Sanborn Fire Insurance map sheets.

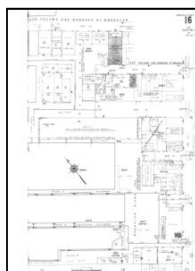


### 1965 Source Sheets



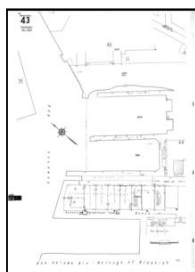
Volume 6, Sheet 16  
1965

### 1951 Source Sheets



Volume 6, Sheet 16  
1951

### 1950 Source Sheets

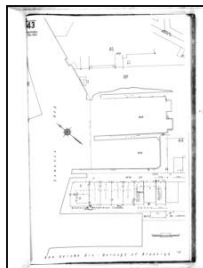


Volume 1, Sheet 43  
1950

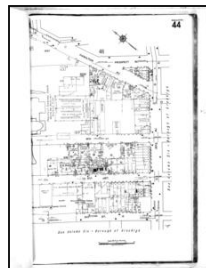


Volume 1, Sheet 44  
1950

### 1938 Source Sheets



Volume 1, Sheet 43  
1938



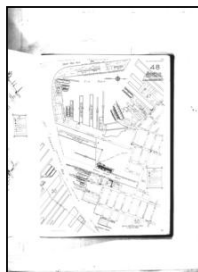
Volume 1, Sheet 44  
1938

## Sanborn Sheet Key

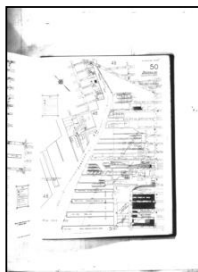
This Certified Sanborn Map Report is based upon the following Sanborn Fire Insurance map sheets.



### 1928 Source Sheets

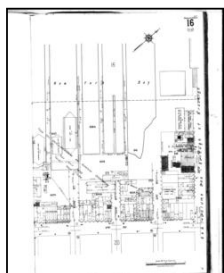


Volume Pier Maps, Sheet 48  
1928



Volume Pier Maps, Sheet 50  
1928

### 1926 Source Sheets

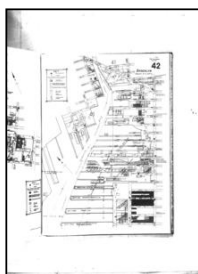


Volume 6, Sheet 16  
1926

### 1922 Source Sheets

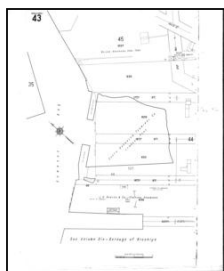


Volume Pier Maps, Sheet 40  
1922



Volume Pier Maps, Sheet 42  
1922

### 1915 Source Sheets



Volume 1, Sheet 43  
1915



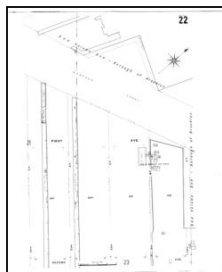
Volume 1, Sheet 44  
1915

## Sanborn Sheet Key

This Certified Sanborn Map Report is based upon the following Sanborn Fire Insurance map sheets.



### 1906 Source Sheets



Volume 6, Sheet 22  
1906

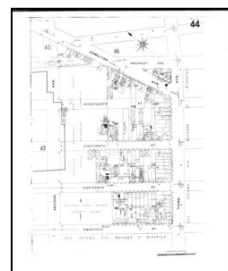


Volume 6, Sheet 23  
1906

### 1904 Source Sheets

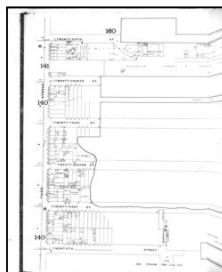


Volume 1, Sheet 43  
1904



Volume 1, Sheet 44  
1904

### 1888 Source Sheets

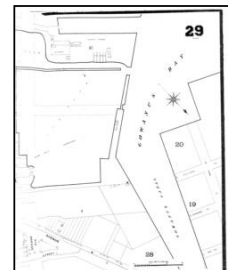


Volume 6, Sheet 159  
1888

### 1886 Source Sheets

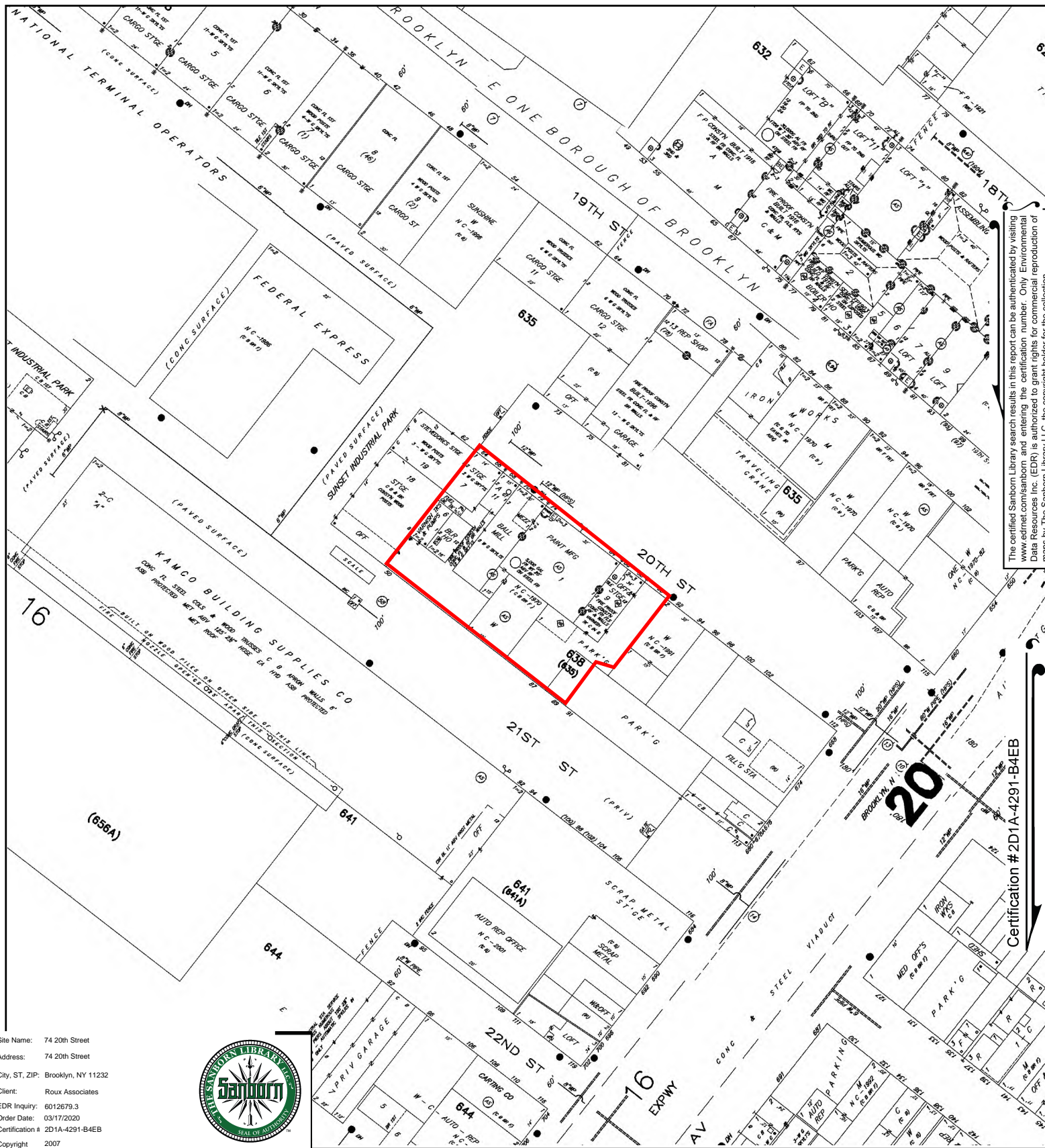


Volume 1, Sheet 29  
1886



Volume 1, Sheet 29  
1886





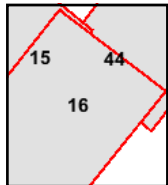
The certified Sanborn Library search results in this report can be authenticated by visiting [www.edr.com/sanborn](http://www.edr.com/sanborn) and entering the certification number. Only Environmental Data Resources Inc. (EDR) is authorized to grant rights for commercial reproduction of maps by The Sanborn Library LLC, the copyright holder for the collection.

Certification #2D1A-4291-B4EB

Site Name: 74 20th Street  
 Address: 74 20th Street  
 City, ST, ZIP: Brooklyn, NY 11232  
 Client: Roux Associates  
 EDR Inquiry: 6012679.3  
 Order Date: 03/17/2020  
 Certification # 2D1A-4291-B4EB  
 Copyright 2007



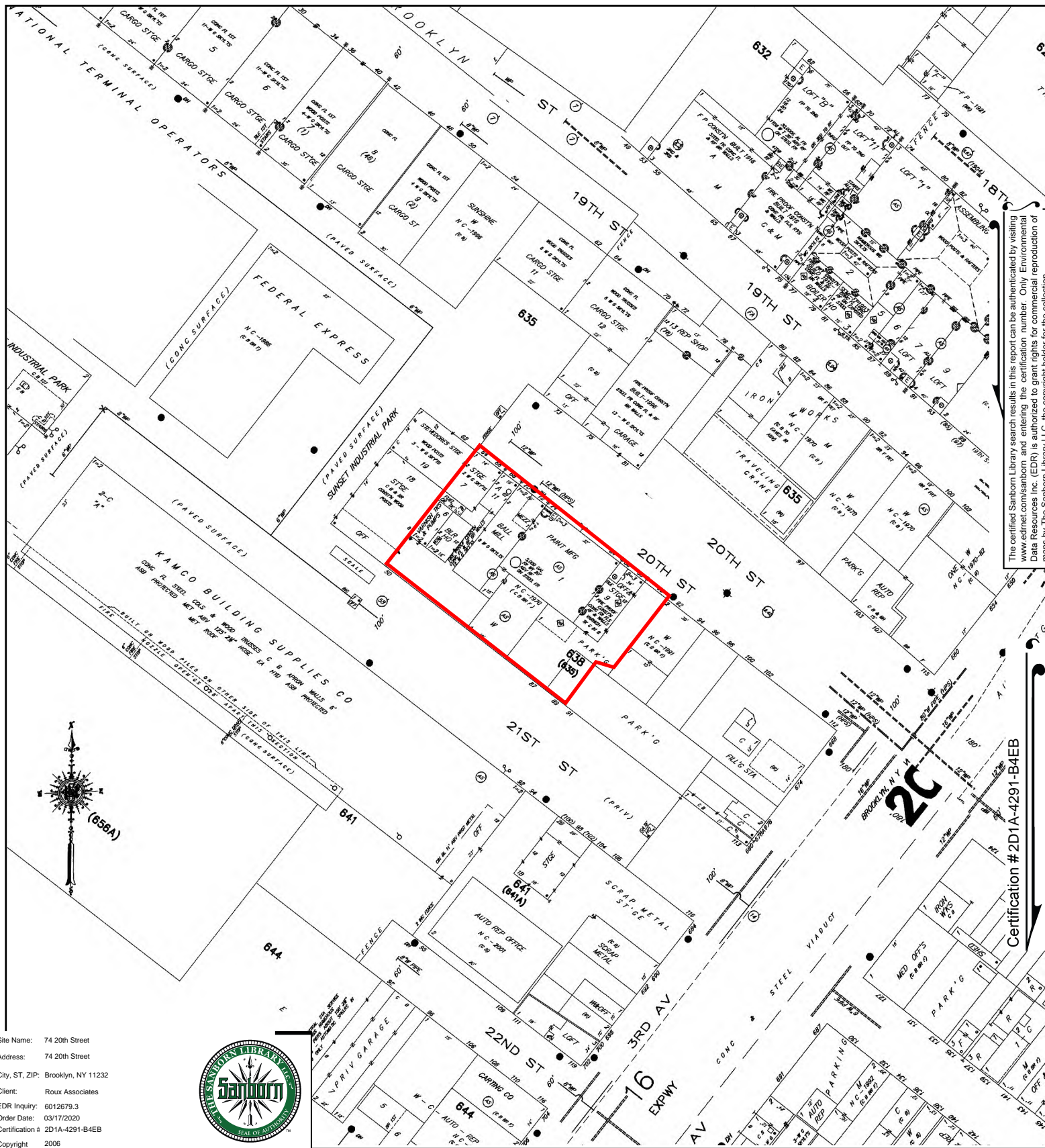
This Certified Sanborn Map combines the following sheets.  
 Outlined areas indicate map sheets within the collection.



Volume 6, Sheet 16  
 Volume 6, Sheet 15  
 Volume 1, Sheet 44







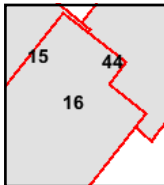
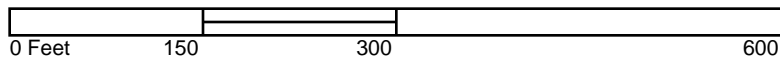
The certified Sanborn Library search results in this report can be authenticated by visiting [www.edr.com/sanborn](http://www.edr.com/sanborn) and entering the certification number. Only Environmental Data Resources Inc. (EDR) is authorized to grant rights for commercial reproduction of maps by The Sanborn Library LLC, the copyright holder for the collection.

Certification #2D1A-4291-B4EB

Site Name: 74 20th Street  
 Address: 74 20th Street  
 City, ST, ZIP: Brooklyn, NY 11232  
 Client: Roux Associates  
 EDR Inquiry: 6012679.3  
 Order Date: 03/17/2020  
 Certification # 2D1A-4291-B4EB  
 Copyright 2006



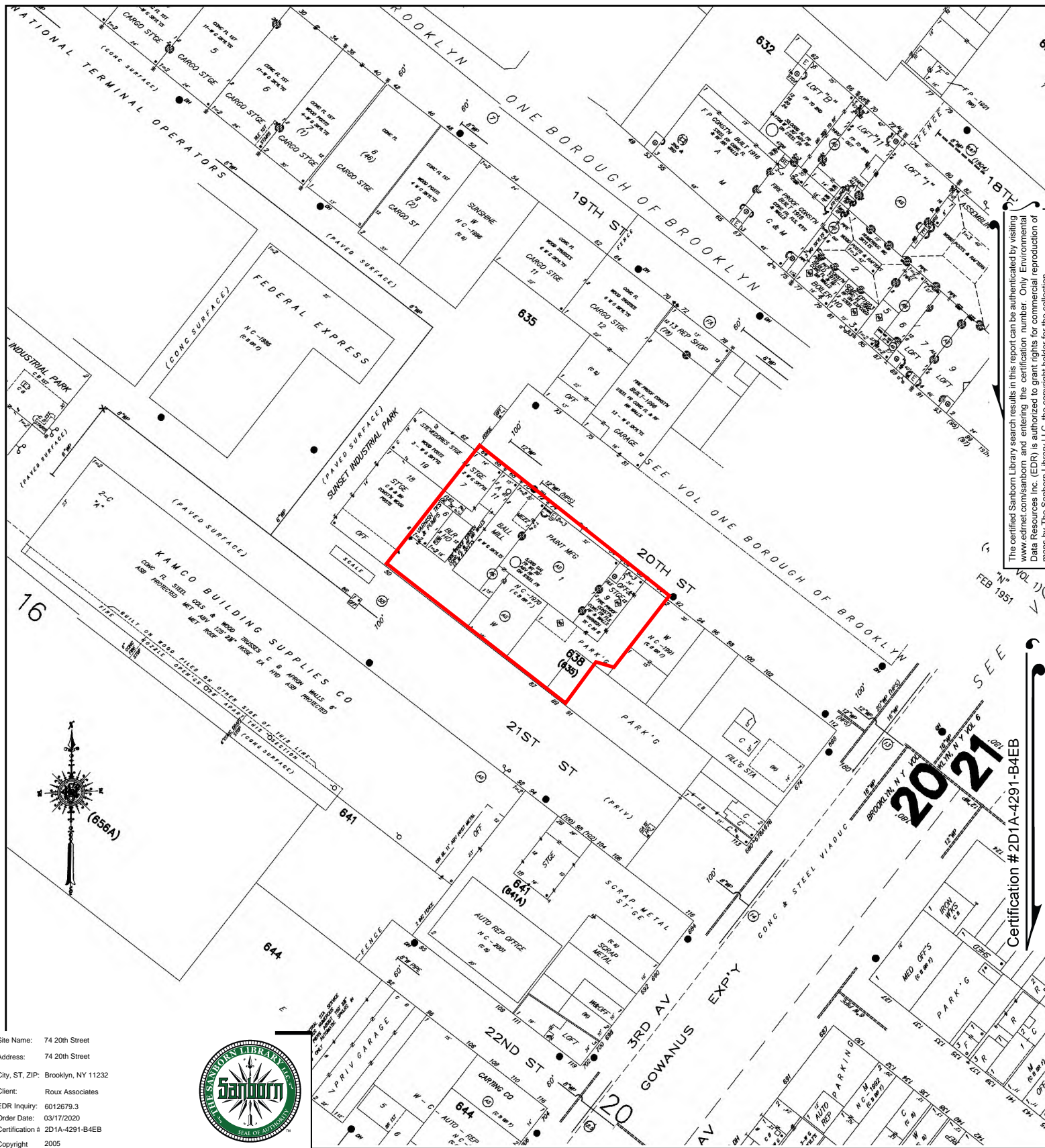
This Certified Sanborn Map combines the following sheets.  
 Outlined areas indicate map sheets within the collection.



Volume 1, Sheet 44  
 Volume 6, Sheet 16  
 Volume 6, Sheet 15





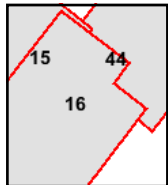
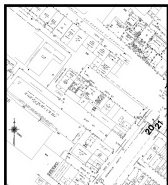
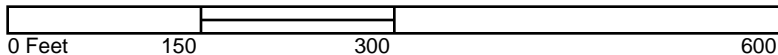


The certified Sanborn Library search results in this report can be authenticated by visiting [www.edrnet.com/sanborn](http://www.edrnet.com/sanborn) and entering the certification number. Only Environmental Data Resources Inc. (EDR) is authorized to grant rights for commercial reproduction of maps by The Sanborn Library LLC, the copyright holder for the collection.

Site Name: 74 20th Street  
 Address: 74 20th Street  
 City, ST, ZIP: Brooklyn, NY 11232  
 Client: Roux Associates  
 EDR Inquiry: 6012679.3  
 Order Date: 03/17/2020  
 Certification #: 2D1A-4291-B4EB  
 Copyright: 2005



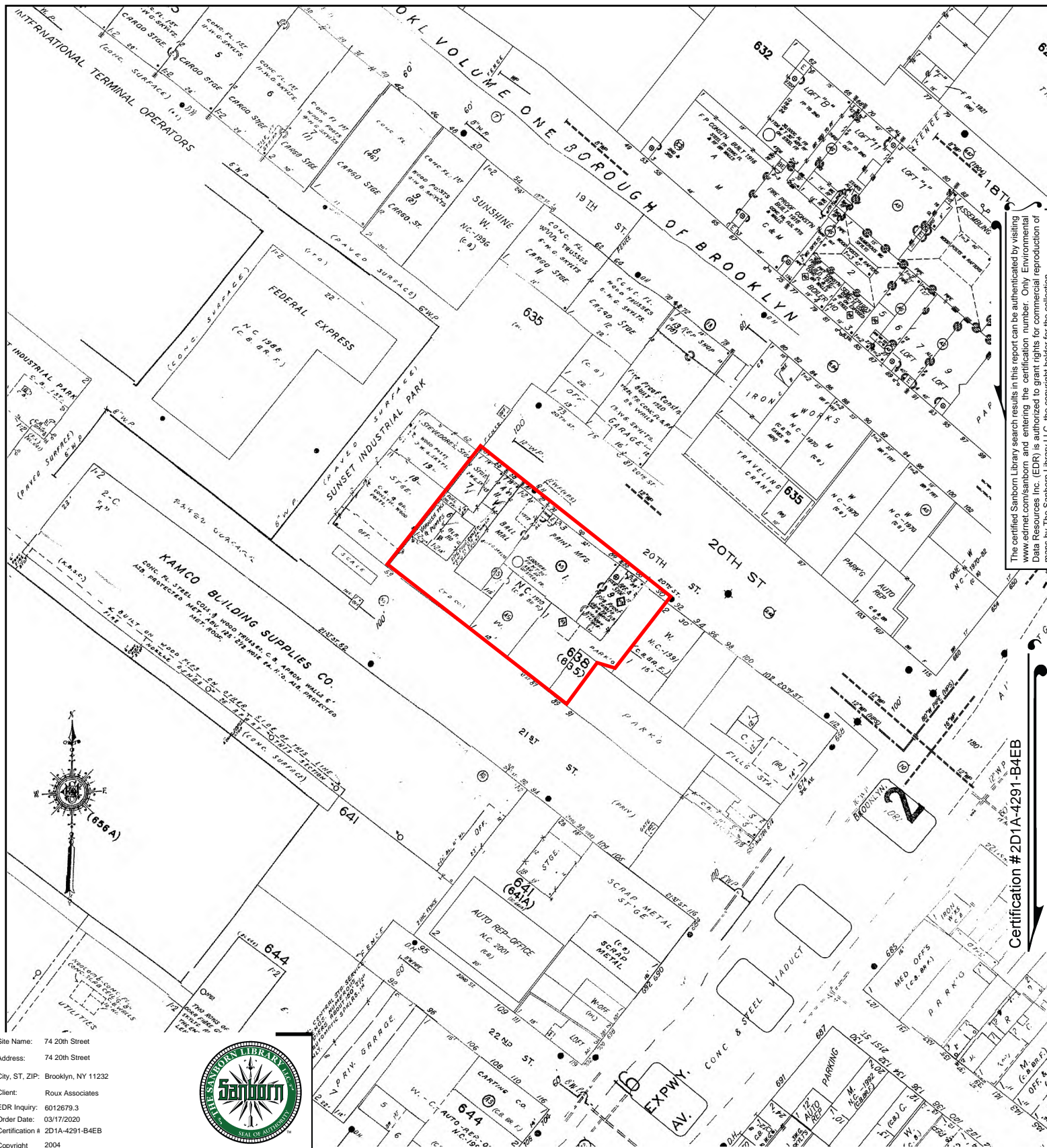
This Certified Sanborn Map combines the following sheets.  
 Outlined areas indicate map sheets within the collection.



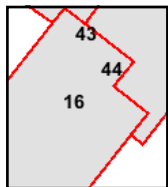
Volume 1, Sheet 44  
 Volume 6, Sheet 16  
 Volume 6, Sheet 15







This Certified Sanborn Map combines the following sheets.  
 Outlined areas indicate map sheets within the collection.

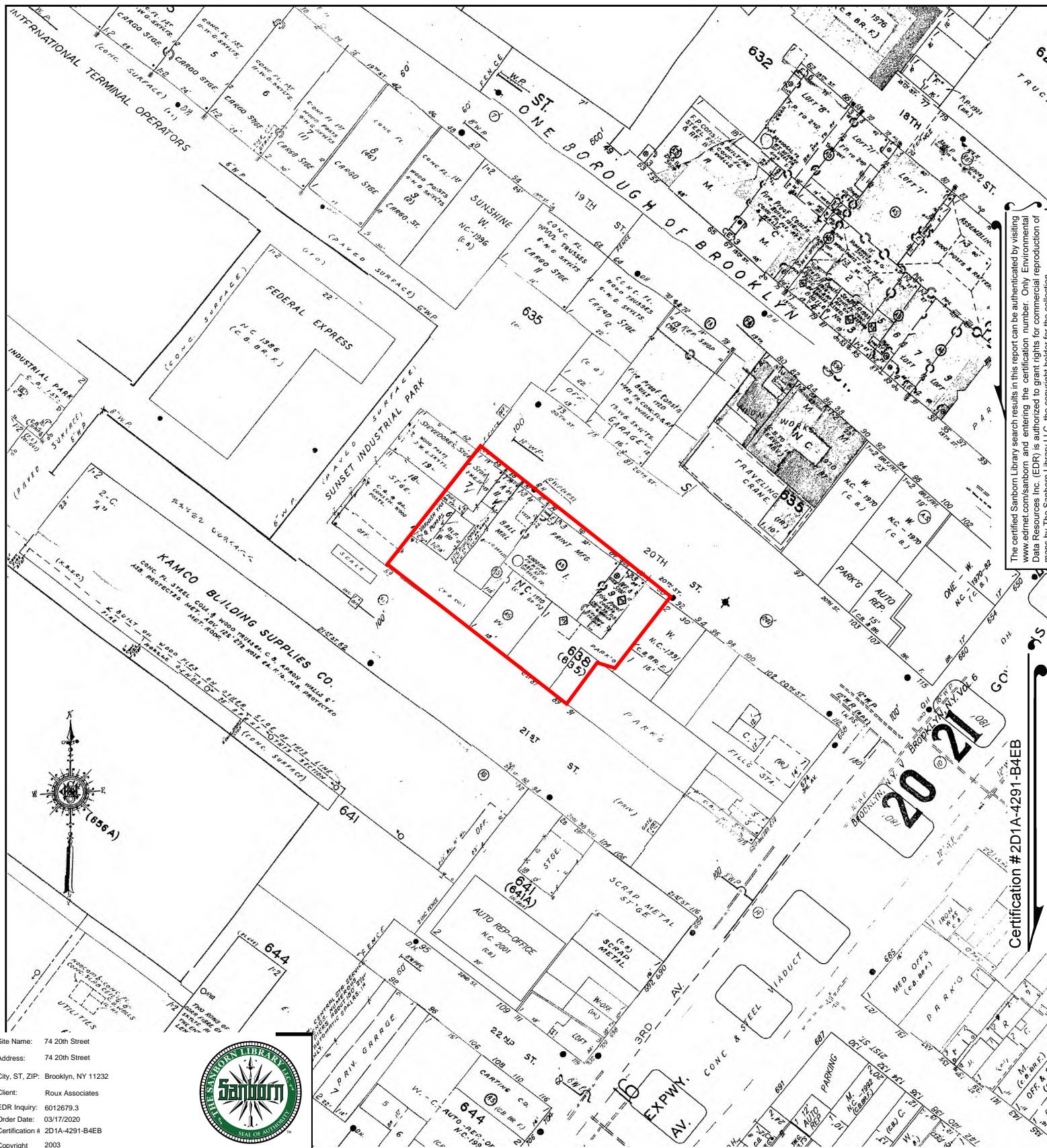


Volume 6, Sheet 16  
 Volume 1, Sheet 44  
 Volume 1, Sheet 43

0 Feet 150 300 600



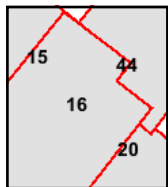




Site Name: 74 20th Street  
 Address: 74 20th Street  
 City, ST, ZIP: Brooklyn, NY 11232  
 Client: Roux Associates  
 EDR Inquiry: 6012679.3  
 Order Date: 03/17/2020  
 Certification # 2D1A-4291-B4EB  
 Copyright 2003



This Certified Sanborn Map combines the following sheets.  
 Outlined areas indicate map sheets within the collection.



Volume 6, Sheet 20  
 Volume 1, Sheet 44  
 Volume 6, Sheet 16  
 Volume 6, Sheet 15

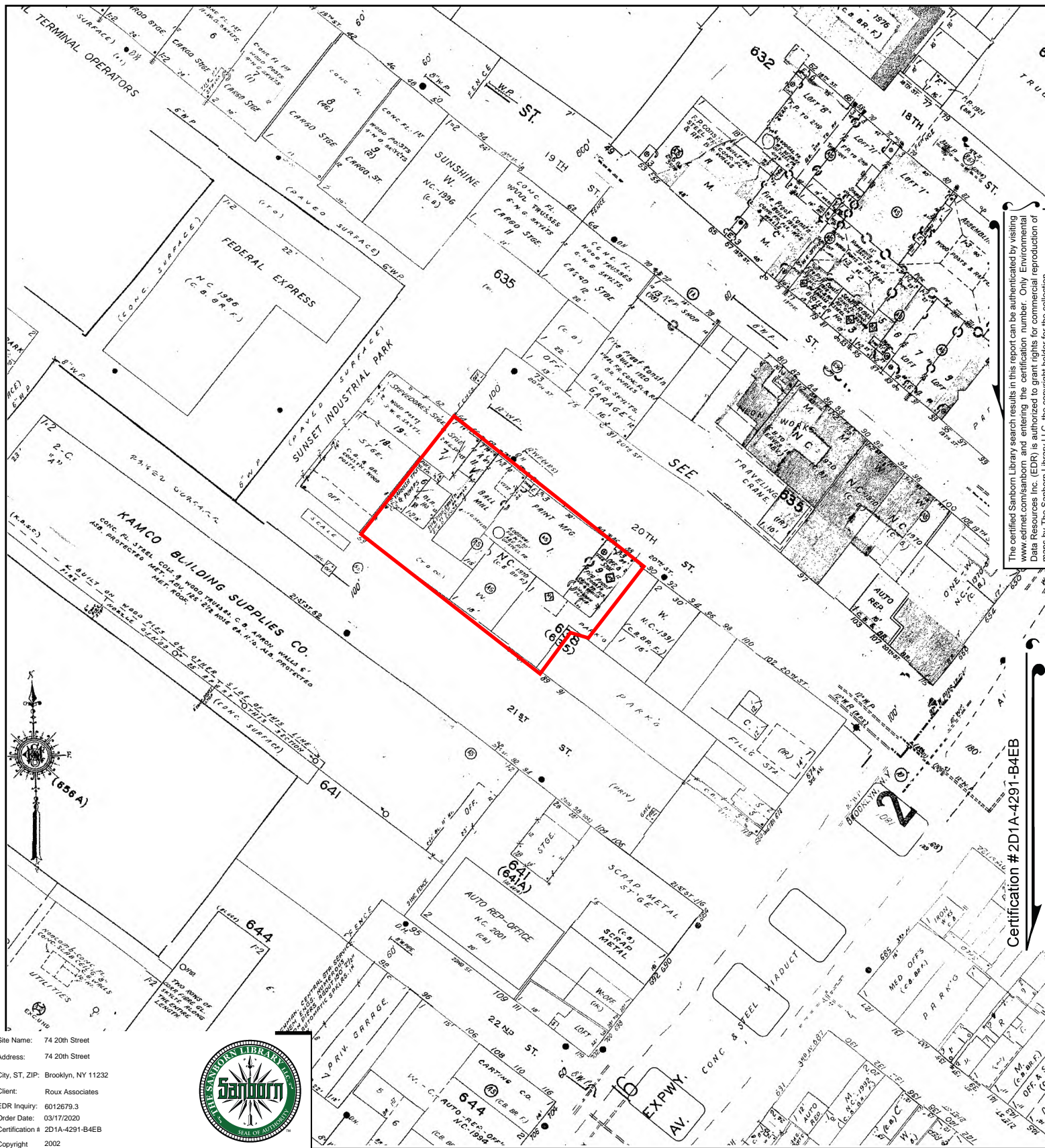
0 Feet 150 300 600



The certified Sanborn Library search results in this report can be authenticated by visiting [www.edrnet.com/sanborn](http://www.edrnet.com/sanborn) and entering the certification number. Only Environmental Data Resources Inc. (EDR) is authorized to grant rights for commercial reproduction of maps by The Sanborn Library LLC, the copyright holder for the collection.

Certification #2D1A-4291-B4EB

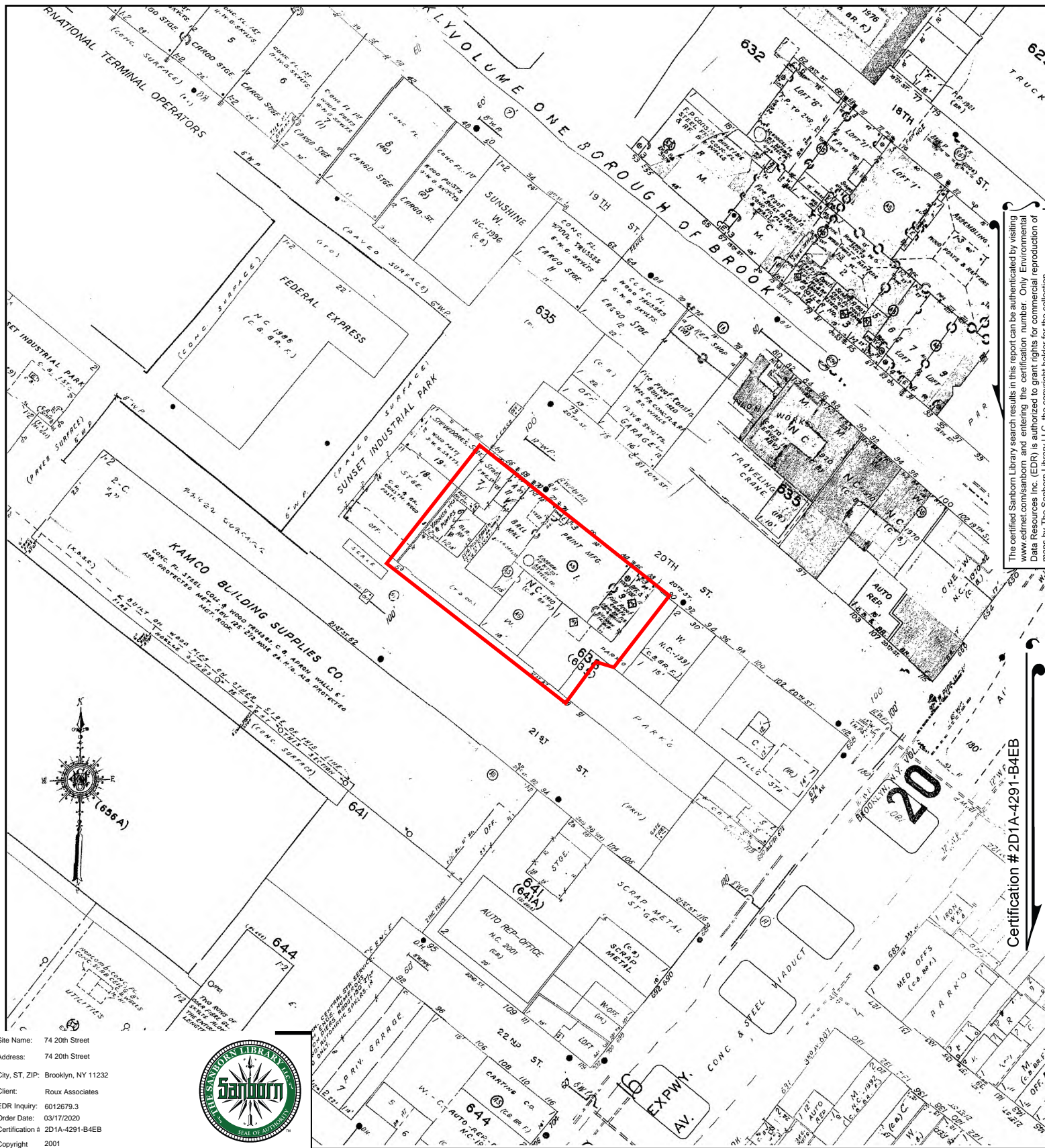




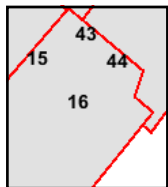
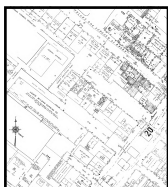
The certified Sanborn Library search results in this report can be authenticated by visiting [www.edrnet.com/sanborn](http://www.edrnet.com/sanborn) and entering the certification number. Only Environmental Data Resources Inc. (EDR) is authorized to grant rights for commercial reproduction of maps by The Sanborn Library LLC, the copyright holder for the collection.

Certification #2D1A-4291-B4EB





This Certified Sanborn Map combines the following sheets.  
 Outlined areas indicate map sheets within the collection.

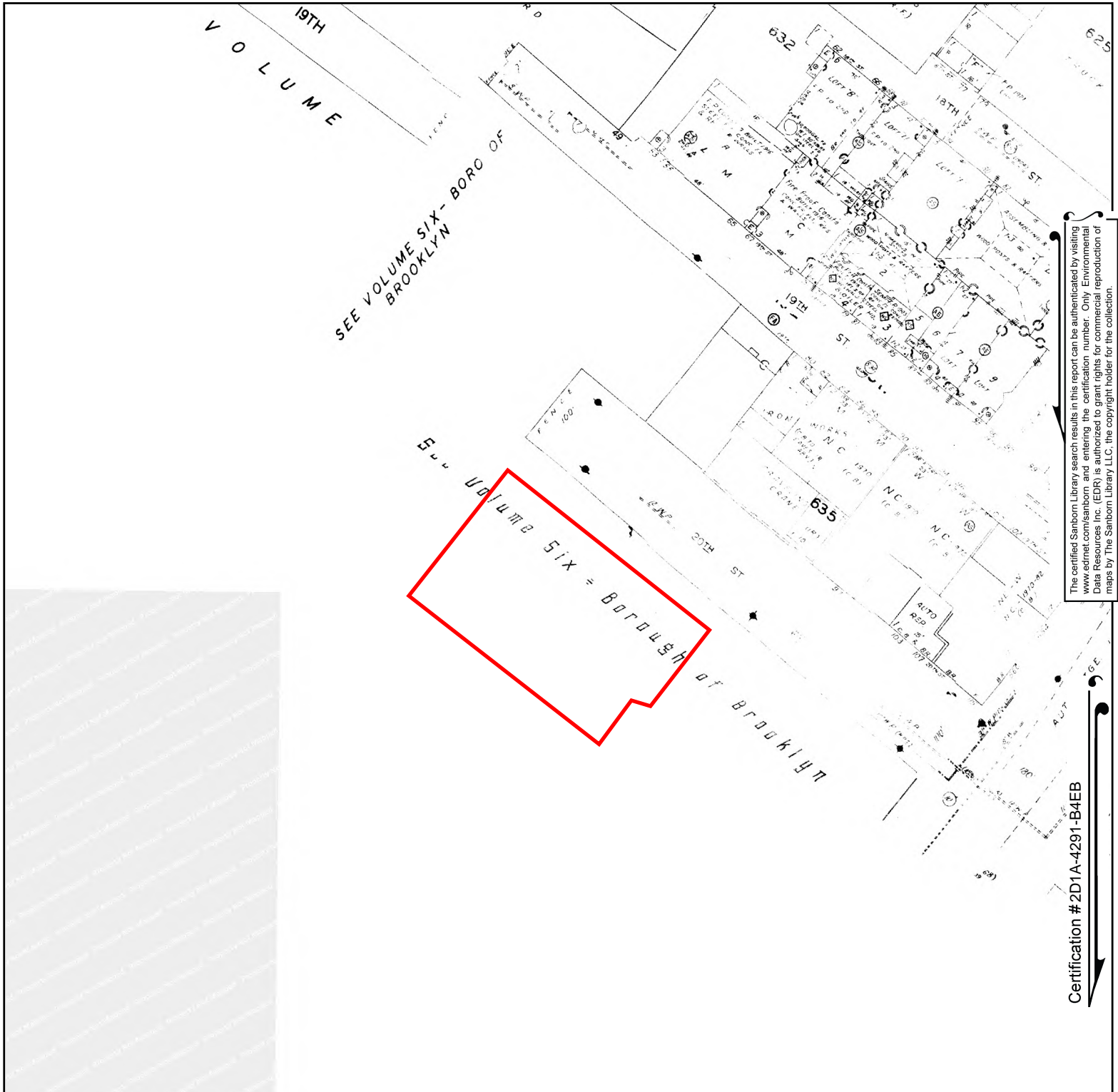


Volume 1, Sheet 44  
 Volume 1, Sheet 43  
 Volume 6, Sheet 16  
 Volume 6, Sheet 15

0 Feet 150 300 600







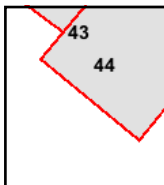
The certified Sanborn Library search results in this report can be authenticated by visiting [www.edrnet.com/sanborn](http://www.edrnet.com/sanborn) and entering the certification number. Only Environmental Data Resources Inc. (EDR) is authorized to grant rights for commercial reproduction of maps by The Sanborn Library LLC, the copyright holder for the collection.

Certification #2D1A-4291-B4EB

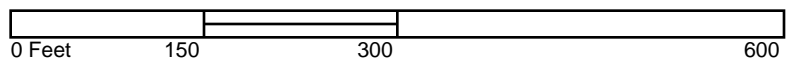
Site Name: 74 20th Street  
 Address: 74 20th Street  
 City, ST, ZIP: Brooklyn, NY 11232  
 Client: Roux Associates  
 EDR Inquiry: 6012679.3  
 Order Date: 03/17/2020  
 Certification # 2D1A-4291-B4EB  
 Copyright 1996

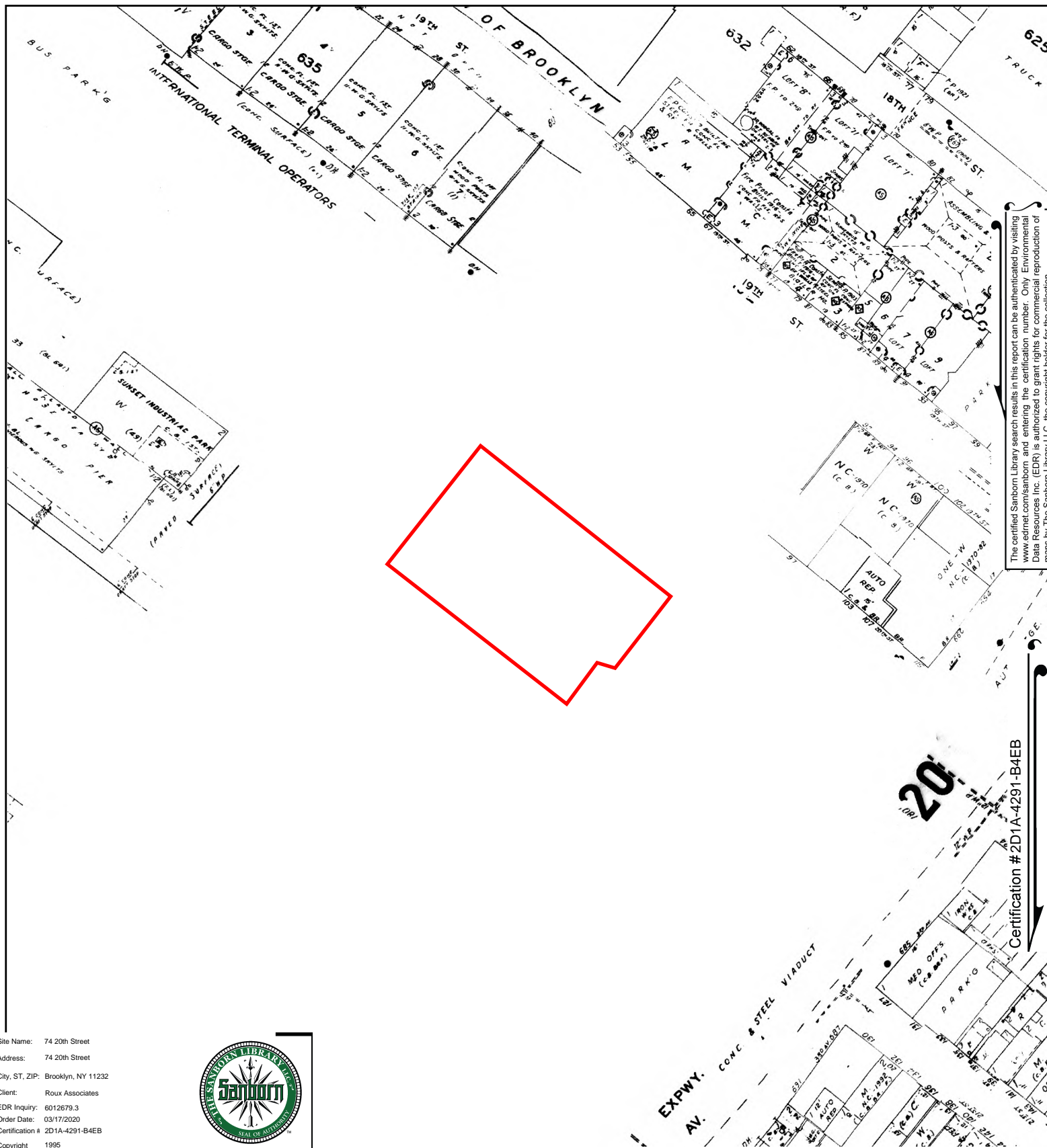


This Certified Sanborn Map combines the following sheets.  
 Outlined areas indicate map sheets within the collection.



Volume 1, Sheet 44  
 Volume 1, Sheet 43





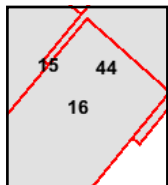
The certified Sanborn Library search results in this report can be authenticated by visiting [www.edrnet.com/sanborn](http://www.edrnet.com/sanborn) and entering the certification number. Only Environmental Data Resources Inc. (EDR) is authorized to grant rights for commercial reproduction of maps by The Sanborn Library LLC, the copyright holder for the collection.

Certification #2D1A-4291-B4EB

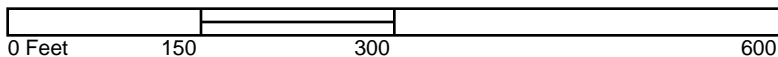
Site Name: 74 20th Street  
 Address: 74 20th Street  
 City, ST, ZIP: Brooklyn, NY 11232  
 Client: Roux Associates  
 EDR Inquiry: 6012679.3  
 Order Date: 03/17/2020  
 Certification #: 2D1A-4291-B4EB  
 Copyright: 1995

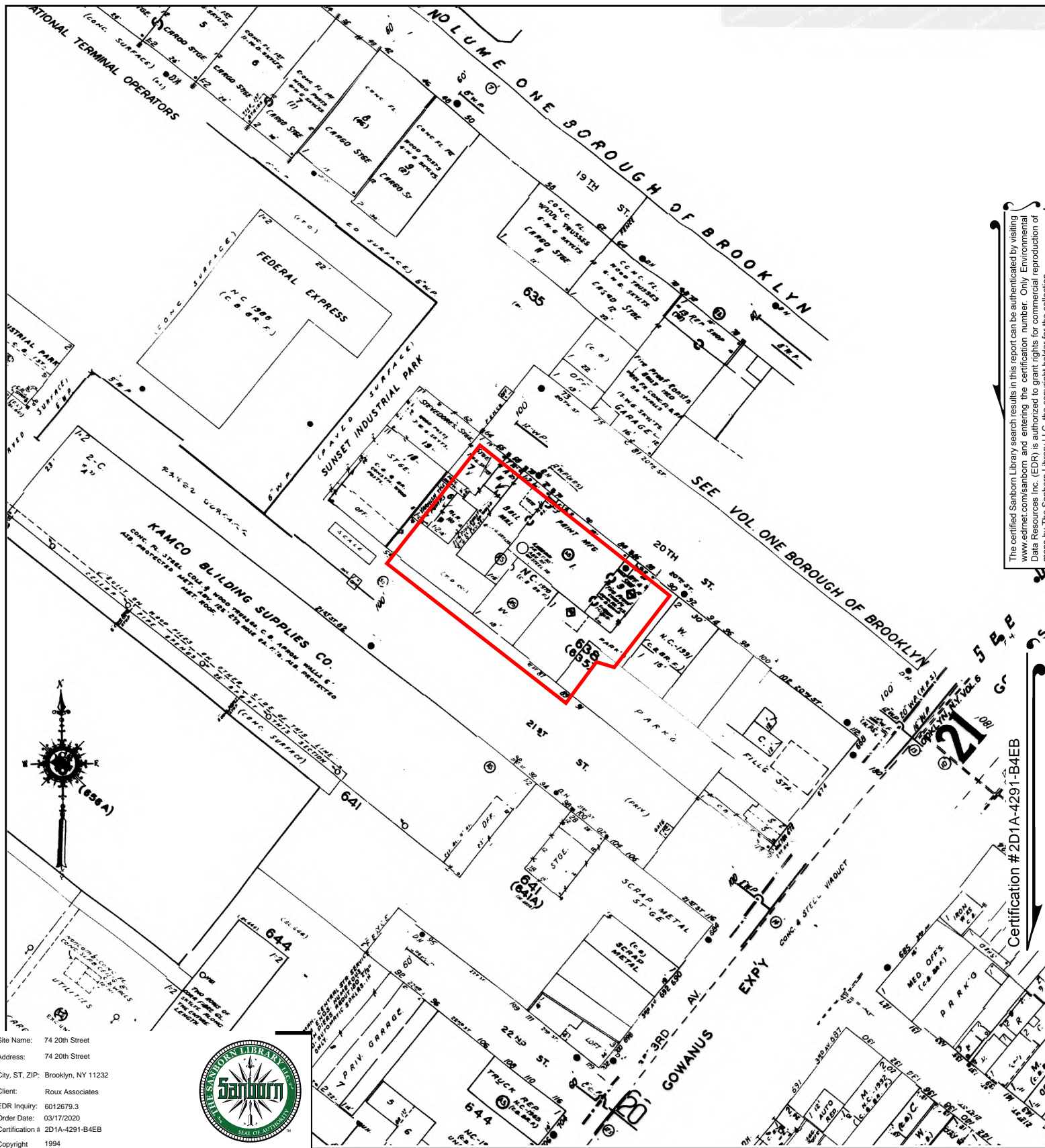


This Certified Sanborn Map combines the following sheets.  
 Outlined areas indicate map sheets within the collection.

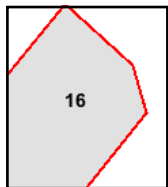
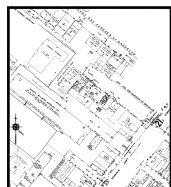
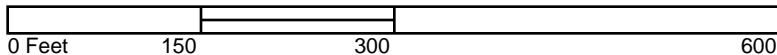


Volume 1, Sheet 44  
 Volume 6, Sheet 15  
 Volume 6, Sheet 16





This Certified Sanborn Map combines the following sheets.  
 Outlined areas indicate map sheets within the collection.

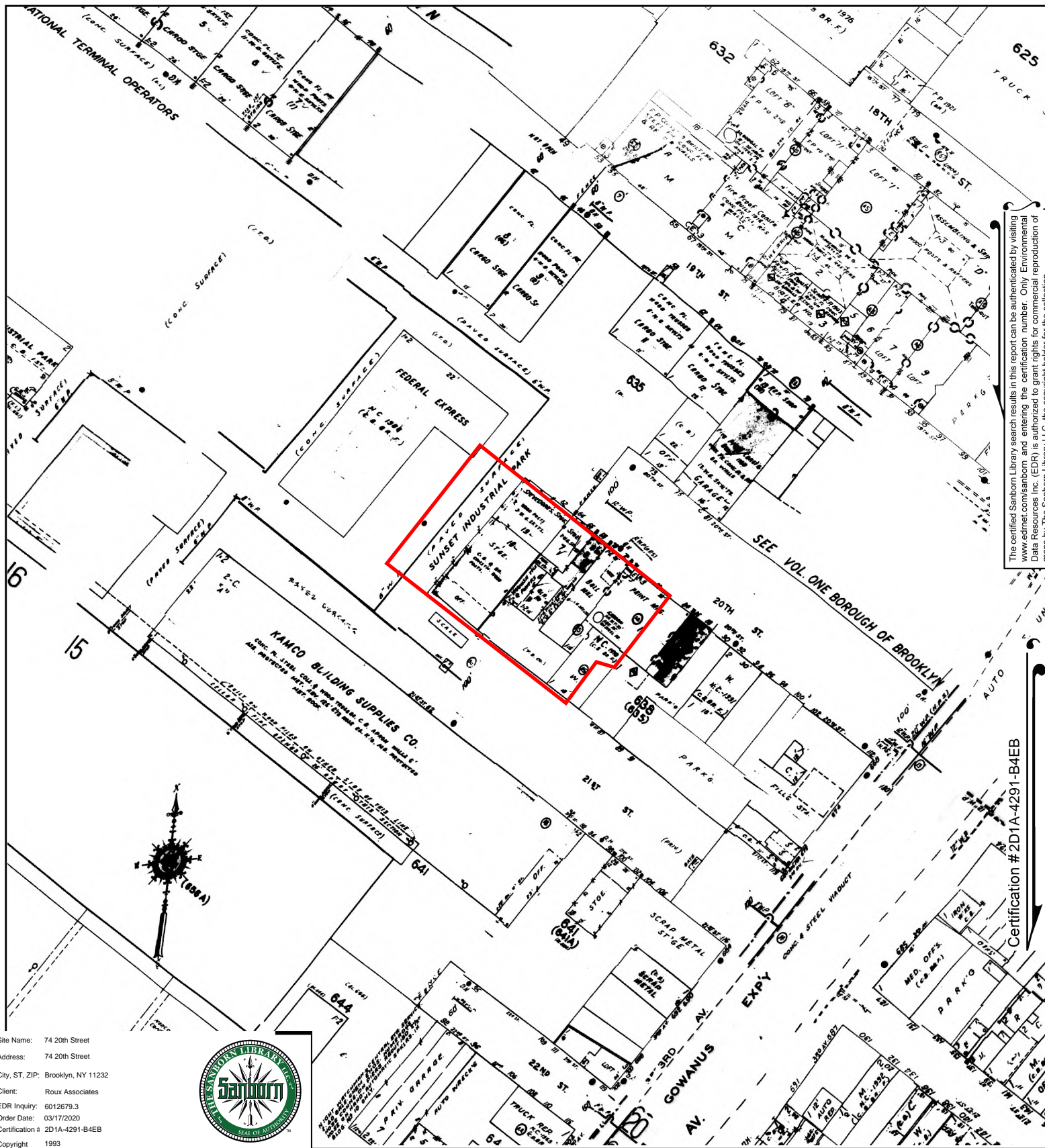


Volume 6, Sheet 16

The certified Sanborn Library search results in this report can be authenticated by visiting [www.edrnet.com/sanborn](http://www.edrnet.com/sanborn) and entering the certification number. Only Environmental Data Resources Inc. (EDR) is authorized to grant rights for commercial reproduction of maps by The Sanborn Library LLC, the copyright holder for the collection.

Certification #2D1A-4291-B4EB





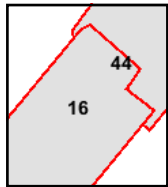
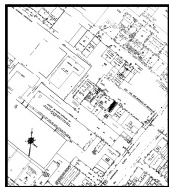
The certified Sanborn Library search results in this report can be authenticated by visiting [www.edrnet.com/sanborn](http://www.edrnet.com/sanborn) and entering the certification number. Only Environmental Data Resources Inc. (EDR) is authorized to grant rights for commercial reproduction of maps by The Sanborn Library LLC, the copyright holder for the collection.

Certification #2D1A-4291-B4EB

Site Name: 74 20th Street  
 Address: 74 20th Street  
 City, ST, ZIP: Brooklyn, NY 11232  
 Client: Roux Associates  
 EDR Inquiry: 6012679.3  
 Order Date: 03/17/2020  
 Certification # 2D1A-4291-B4EB  
 Copyright 1993



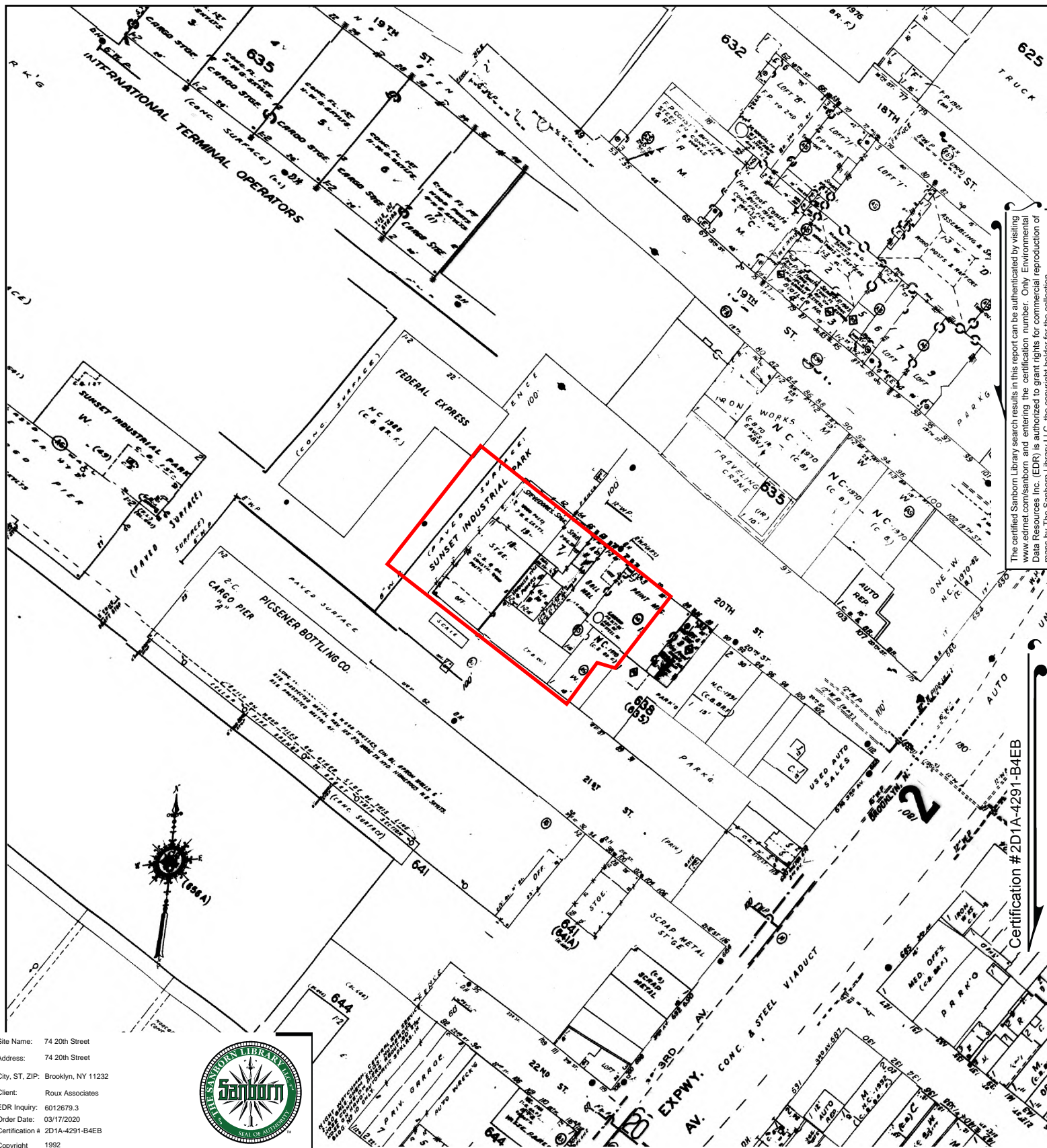
This Certified Sanborn Map combines the following sheets.  
 Outlined areas indicate map sheets within the collection.



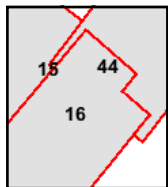
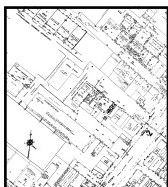
Volume 6, Sheet 16  
 Volume 1, Sheet 44



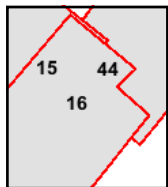
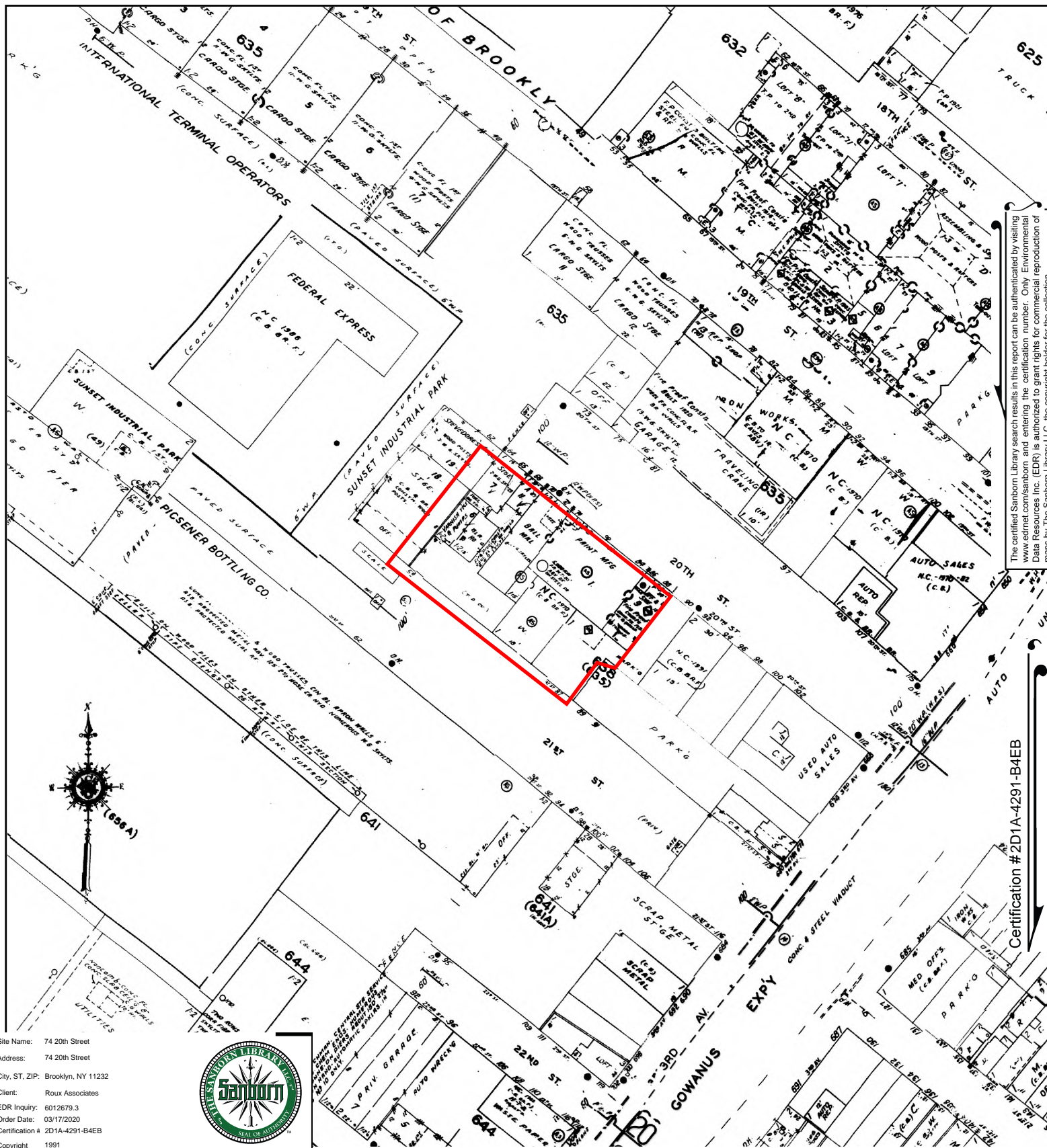




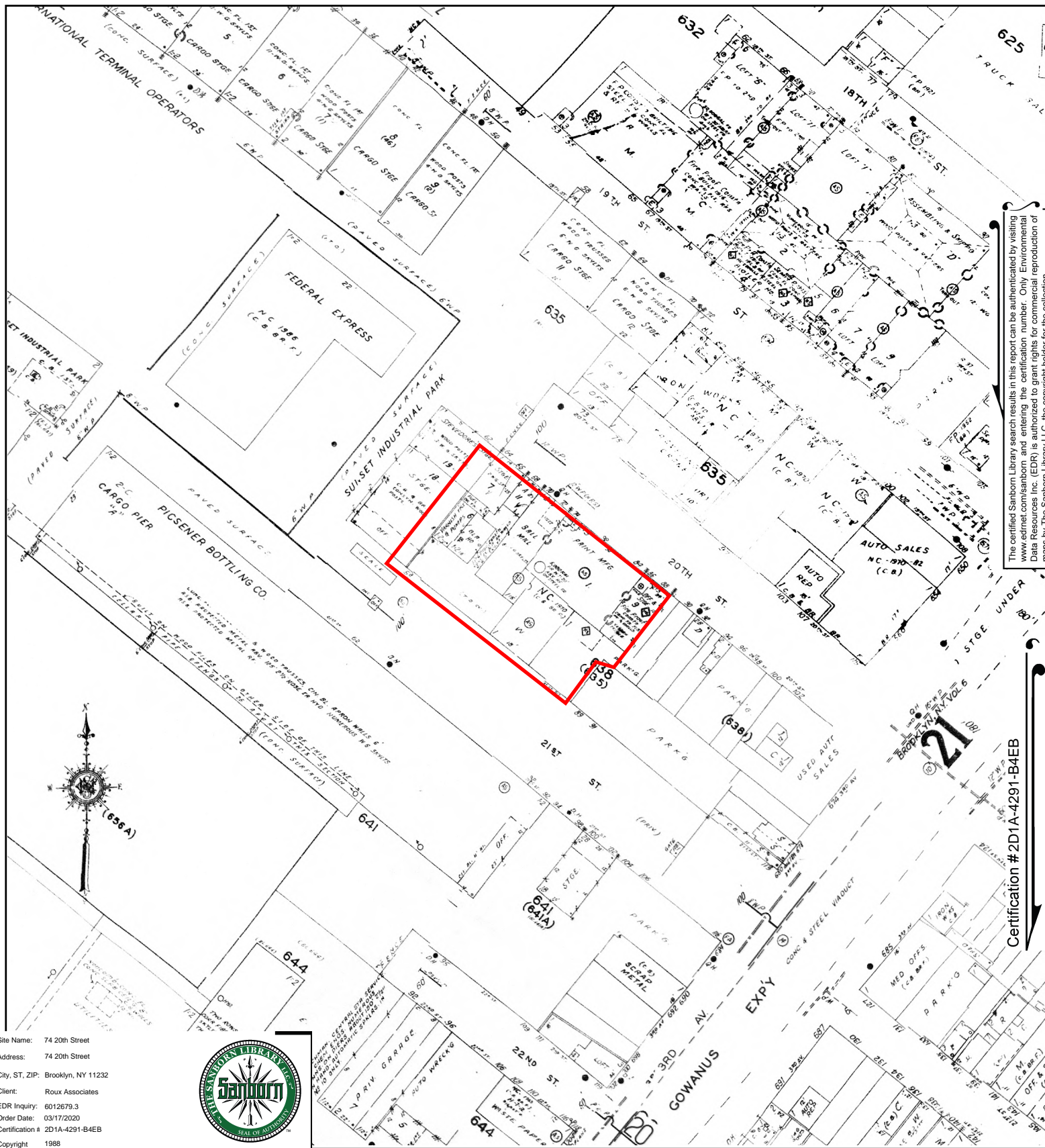
The certified Sanborn Library search results in this report can be authenticated by visiting [www.edrnet.com/sanborn](http://www.edrnet.com/sanborn) and entering the certification number. Only Environmental Data Resources Inc. (EDR) is authorized to grant rights for commercial reproduction of maps by The Sanborn Library LLC, the copyright holder for the collection.







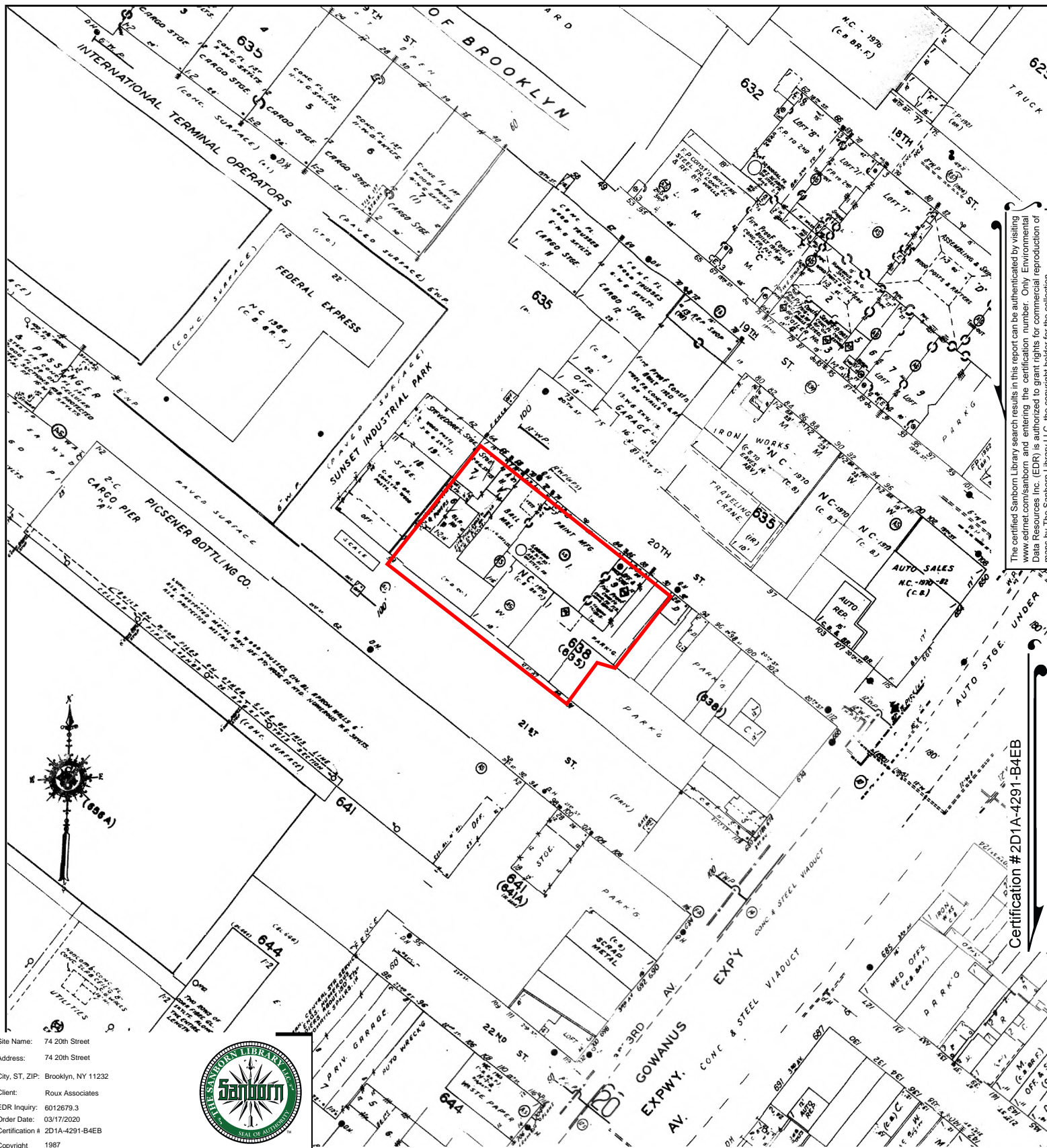




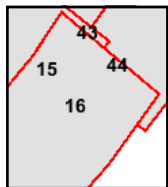
The certified Sanborn Library search results in this report can be authenticated by visiting [www.edrnet.com/sanborn](http://www.edrnet.com/sanborn) and entering the certification number. Only Environmental Data Resources Inc. (EDR) is authorized to grant rights for commercial reproduction of maps by The Sanborn Library LLC, the copyright holder for the collection.

Certification #2D1A-4291-B4EB



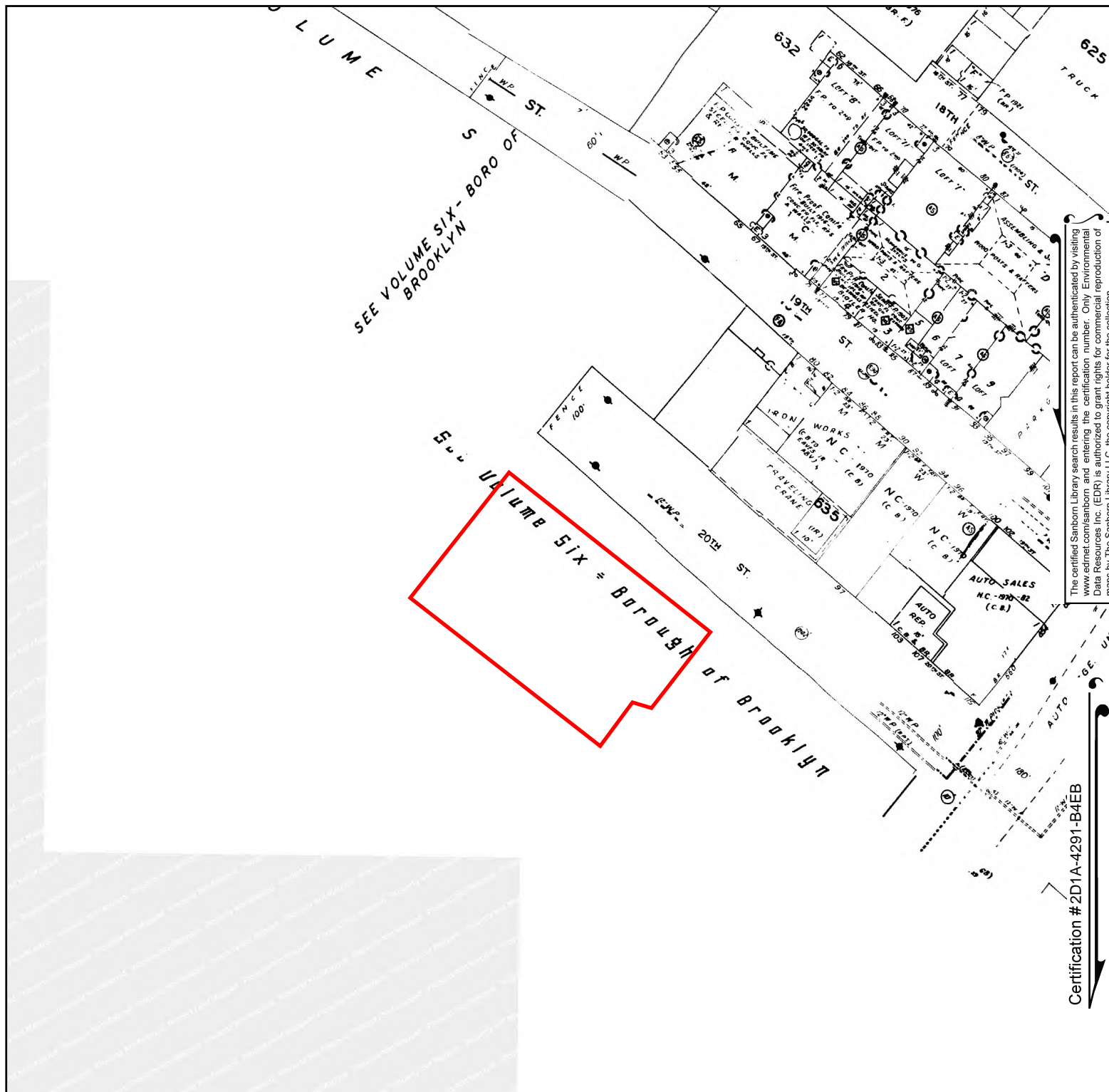


This Certified Sanborn Map combines the following sheets.  
 Outlined areas indicate map sheets within the collection.



Volume 1, Sheet 44  
 Volume 1, Sheet 43  
 Volume 6, Sheet 16  
 Volume 6, Sheet 15





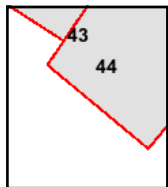
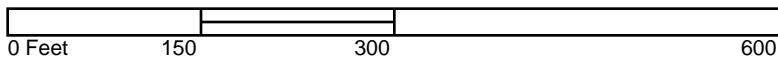
The certified Sanborn Library search results in this report can be authenticated by visiting [www.edrnet.com/sanborn](http://www.edrnet.com/sanborn) and entering the certification number. Only Environmental Data Resources Inc. (EDR) is authorized to grant rights for commercial reproduction of maps by The Sanborn Library LLC, the copyright holder for the collection.

Certification #2D1A-4291-B4EB

Site Name: 74 20th Street  
 Address: 74 20th Street  
 City, ST, ZIP: Brooklyn, NY 11232  
 Client: Roux Associates  
 EDR Inquiry: 6012679.3  
 Order Date: 03/17/2020  
 Certification # 2D1A-4291-B4EB  
 Copyright 1986



This Certified Sanborn Map combines the following sheets.  
 Outlined areas indicate map sheets within the collection.



Volume 1, Sheet 44  
 Volume 1, Sheet 43

