



Daily Activity Report

Seton Brilla Charter School
1956 Jerome Avenue, Bronx, NY
BCP No. C203152

General Site Information

Date:	Friday, February 24, 2023
Weather:	Partly Cloudy, 22-45°F
Wind Direction/Speed:	NW @ 20-30 mph
AKRF Personnel on Site:	Shannon Donohue
AKRF Equipment on Site:	Mini RAE 3000 Photoionization Detector [(PID) x1], 2 Fixed Air Monitoring Stations [DustTrak
Visitors:	None.

Contractor Information

Contracting Company	Main Personnel	Equipment
Casino Construction	Connor McGrory	Excavator, CFA Drill Rig

Description and Location of Work Activities Performed

- 1) Excavation of soil/fill around piles and SOE in grid WC-04.
- 2) Installation of additional SOE along northern boundary of site in grid WC-04.
- 3) Cutting of piles to their final elevation in grid WC-04.

Site Soil Disposal Tracking Information

Destination Facility	Daily Trucks	Total Trucks	Daily Approx. Cubic Yds	Total Approx. Cubic Yds	Total Site Loads	Total Approximate Cubic Yards
Clean Earth Carteret	0	73	0	1,460	165	3,300
Clean Earth Southeastern Pennsylvania	0	66	0	1,320		
Concrete Disposal	0	26	0	520		
N/A	0	0	0	0		
N/A	0	0	0	0		

CAMP Air Monitoring Results

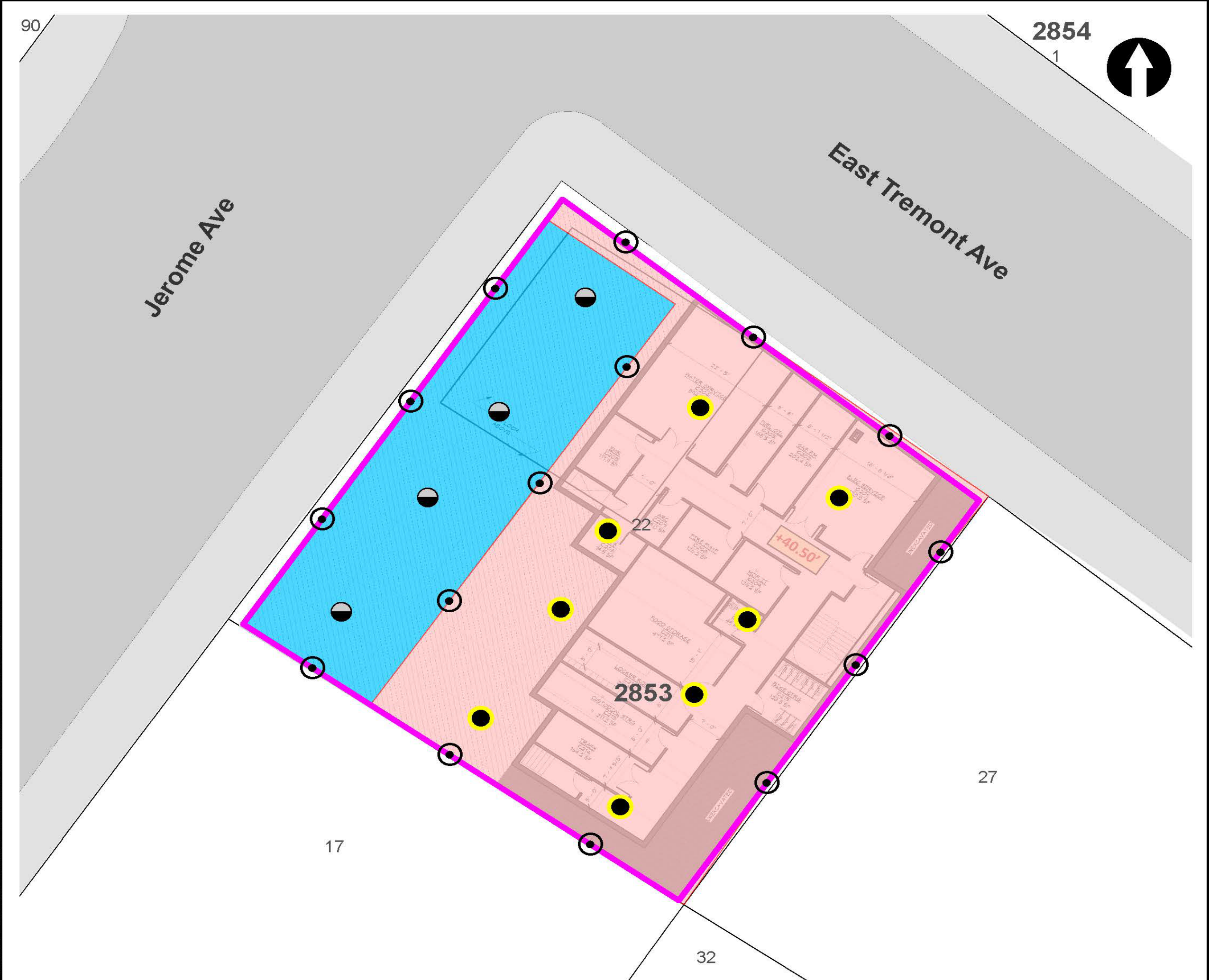
CAMP Station	UPWIND				DOWNWIND		
Odors:	None.				None.		
VOC Action Level Exceedance(s):	None.				None.		
Particulate Action Level Exceedance(s):	None.				None.		
Maximum VOC Level (15 min ppm):	1.389				0.217		
Maximum Particulate Level (15 min mg/m ³):	0.0283				0.091		

Notes: CAMP monitoring was performed throughout the day. The downwind DustTrak recorded some negative readings between 13:30-15:00, AKRF was able to resolve the issue by the end of the day.

Additional Information

Planned Work Activity for Following Day/Week:	1) Excavation of soil/fill to uncover piles. 2) Cutting piles to final elevations
Comments:	None.

Site Map



LEGEND

- PROJECT SITE BOUNDARY
- LOT BOUNDARY AND TAX LOT NUMBER
- 2853** BLOCK NUMBER
- REMEDIAL EXCAVATION TO APPROXIMATELY TWO FEET BELOW EXISTING GRADE
- REMEDIAL EXCAVATION TO GROUNDWATER (SOURCE AREA)

- CONFIRMATION DOCUMENTATION BOTTOM SAMPLE
- SOURCE AREA DOCUMENTATION BOTTOM SAMPLE
- DOCUMENTATION SIDEWALL SAMPLE

NOTE
 REMEDIAL EXCAVATION WILL INCLUDE REMOVAL OF APPROXIMATELY 1,280 TONS (850 CUBIC YARDS) OF SOURCE MATERIAL ASSOCIATED WITH NYSDEC SPILL NO. 2103719 AND APPROXIMATELY 860 TONS (570 CUBIC YARDS) OF SOIL/FILL FROM THE UPPER 2 FEET SITE-WIDE.



Map Source:
 NYCDP (NYC Dept. of City Planning) GIS database

© 2021 AKRF. W:\Projects\210024 - 1956 JEROME AVENUE\Technical\GIS and Graphics\AR\RAW\210024 Figure 9 Proposed Remedial Excavation and Documentation Sample Location Plan.mxd 10/25/2021 2:03:38 PM iszalus



440 Park Avenue South, New York, NY 10016

1956 Jerome Avenue
 Bronx, New York

**TRACK 4 CLEANUP AND DOCUMENTATION
 SAMPLE LOCATION PLAN**

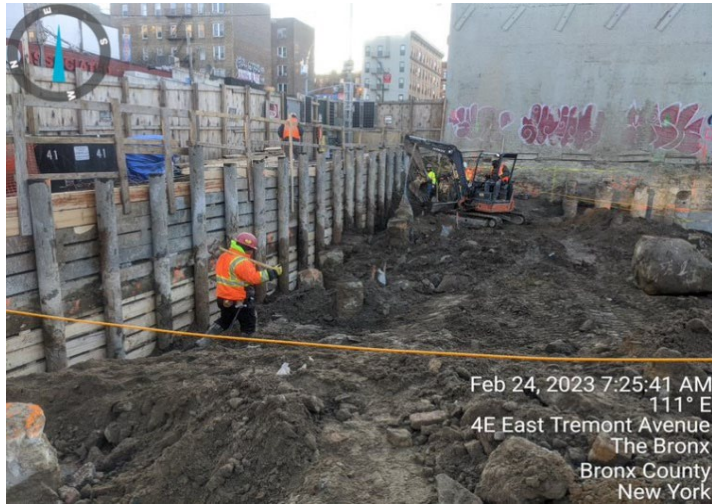
DATE
04/29/2022

PROJECT NO.
210024

FIGURE
11

Site Photographs

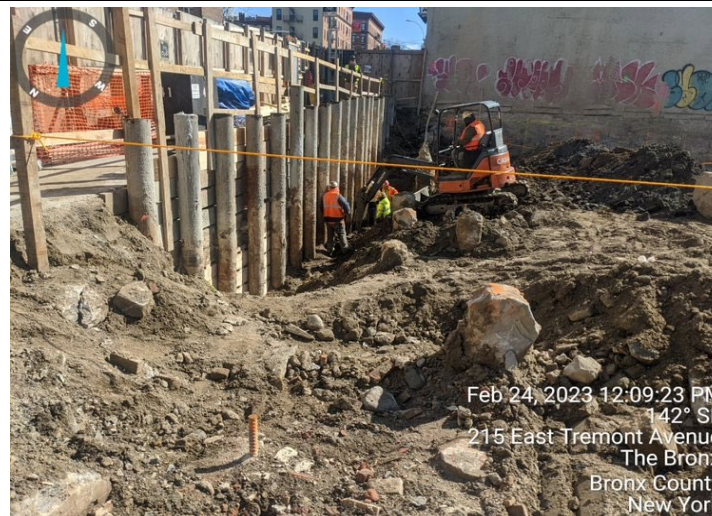
Photograph 1 -
Excavation in Grid
WC-04, view facing
east.



Photograph 2-
Cutting piles in grid
WC-04, view facing
southwest.



Photograph 3- Work
on SOE along north
boundary of grid WC-
04, view facing east



Upwind Station						
Time	Instantaneous VOC (ppm)	Instantaneous Mass Conc. Total (mg/m ³)	Mass Conc. Total mg/m ³ AVG 15m (mg/m ³)	Dust Exceedance	VOC ppm AVG 15m (ppm)	VOC Exceedance
2/24/2023 7:18	0			No	0	No
2/24/2023 7:19	0.005	0.019	0.019	No	0.0025	No
2/24/2023 7:20	0.019	0.023	0.021	No	0.008	No
2/24/2023 7:21	0.019	0.02	0.0207	No	0.0108	No
2/24/2023 7:22	0.023	0.02	0.0205	No	0.0132	No
2/24/2023 7:23	0.029	0.018	0.02	No	0.0158	No
2/24/2023 7:24	0.031	0.017	0.0195	No	0.018	No
2/24/2023 7:25	0.039	0.019	0.0194	No	0.0206	No
2/24/2023 7:26	0.041	0.024	0.02	No	0.0229	No
2/24/2023 7:27	0.051	0.018	0.0198	No	0.0257	No
2/24/2023 7:28	0.049	0.018	0.0196	No	0.0278	No
2/24/2023 7:29	0.058	0.018	0.0195	No	0.0303	No
2/24/2023 7:30	0.069	0.018	0.0193	No	0.0333	No
2/24/2023 7:31	0.07	0.024	0.0197	No	0.0359	No
2/24/2023 7:32	0.079	0.03	0.0204	No	0.0388	No
2/24/2023 7:33	0.073	0.025	0.0207	No	0.0437	No
2/24/2023 7:34	0.072	0.02	0.0208	No	0.0481	No
2/24/2023 7:35	0.071	0.023	0.0208	No	0.0516	No
2/24/2023 7:36	0.082	0.022	0.0209	No	0.0558	No
2/24/2023 7:37	0.071	0.018	0.0208	No	0.059	No
2/24/2023 7:38	0.082	0.017	0.0207	No	0.0625	No
2/24/2023 7:39	0.077	0.127	0.0281	No	0.0656	No
2/24/2023 7:40	0.077	0.022	0.0283	No	0.0681	No
2/24/2023 7:41	0.079	0.019	0.0279	No	0.0707	No
2/24/2023 7:42	0.087	0.018	0.0279	No	0.0731	No
2/24/2023 7:43	0.094	0.016	0.0278	No	0.0761	No
2/24/2023 7:44	0.094	0.016	0.0277	No	0.0785	No
2/24/2023 7:45	0.098	0.014	0.0274	No	0.0804	No
2/24/2023 7:46	0.097	0.016	0.0269	No	0.0822	No
2/24/2023 7:47	0.107	0.016	0.0259	No	0.0841	No
2/24/2023 7:48	0.113	0.014	0.0252	No	0.0867	No
2/24/2023 7:49	0.118	0.016	0.0249	No	0.0898	No
2/24/2023 7:50	0.121	0.016	0.0245	No	0.0931	No
2/24/2023 7:51	0.124	0.016	0.0241	No	0.0959	No
2/24/2023 7:52	0.118	0.014	0.0238	No	0.0991	No
2/24/2023 7:53	0.126	0.013	0.0235	No	0.102	No
2/24/2023 7:54	0.133	0.014	0.016	No	0.1057	No
2/24/2023 7:55	0.131	0.018	0.0157	No	0.1093	No
2/24/2023 7:56	0.14	0.025	0.0161	No	0.1134	No
2/24/2023 7:57	0.146	0.029	0.0169	No	0.1173	No
2/24/2023 7:58	0.147	0.026	0.0175	No	0.1209	No
2/24/2023 7:59	0.149	0.02	0.0178	No	0.1245	No
2/24/2023 8:00	0.15	0.015	0.0179	No	0.128	No
2/24/2023 8:01	0.158	0.02	0.0181	No	0.1321	No
2/24/2023 8:02	0.159	0.02	0.0184	No	0.1355	No
2/24/2023 8:03	0.166	0.015	0.0185	No	0.1391	No
2/24/2023 8:04	0.17	0.014	0.0183	No	0.1425	No
2/24/2023 8:05	0.17	0.012	0.0181	No	0.1458	No
2/24/2023 8:06	0.179	0.012	0.0178	No	0.1495	No
2/24/2023 8:07	0.175	0.014	0.0178	No	0.1533	No
2/24/2023 8:08	0.178	0.012	0.0177	No	0.1567	No
2/24/2023 8:09	0.199	0.014	0.0177	No	0.1611	No

Upwind Station						
Time	Instaneous VOC (ppm)	Instaneous Mass Conc. Total (mg/m ³)	Mass Conc. Total mg/m ³ AVG 15m (mg/m ³)	Dust Exceedance	VOC ppm AVG 15m (ppm)	VOC Exceedance
2/24/2023 8:10	0.19	0.012	0.0173	No	0.1651	No
2/24/2023 8:11	0.204	0.012	0.0165	No	0.1693	No
2/24/2023 8:12	0.203	0.014	0.0155	No	0.1731	No
2/24/2023 8:13	0.203	0.016	0.0148	No	0.1769	No
2/24/2023 8:14	0.218	0.015	0.0145	No	0.1815	No
2/24/2023 8:15	0.217	0.016	0.0145	No	0.1859	No
2/24/2023 8:16	0.218	0.014	0.0141	No	0.1899	No
2/24/2023 8:17	0.228	0.012	0.0136	No	0.1945	No
2/24/2023 8:18	0.232	0.013	0.0135	No	0.1989	No
2/24/2023 8:19	0.24	0.011	0.0133	No	0.2036	No
2/24/2023 8:20	0.237	0.013	0.0133	No	0.2081	No
2/24/2023 8:21	0.249	0.017	0.0137	No	0.2127	No
2/24/2023 8:22	0.251	0.014	0.0137	No	0.2178	No
2/24/2023 8:23	0.256	0.016	0.0139	No	0.223	No
2/24/2023 8:24	0.264	0.015	0.014	No	0.2273	No
2/24/2023 8:25	0.273	0.011	0.0139	No	0.2329	No
2/24/2023 8:26	0.269	0.013	0.014	No	0.2372	No
2/24/2023 8:27	0.277	0.013	0.0139	No	0.2421	No
2/24/2023 8:28	0.289	0.014	0.0138	No	0.2479	No
2/24/2023 8:29	0.29	0.011	0.0135	No	0.2527	No
2/24/2023 8:30	0.285	0.012	0.0133	No	0.2572	No
2/24/2023 8:31	0.304	0.015	0.0133	No	0.2629	No
2/24/2023 8:32	0.343	0.021	0.0139	No	0.2706	No
2/24/2023 8:33	0.333	0.013	0.0139	No	0.2773	No
2/24/2023 8:34	0.337	0.013	0.0141	No	0.2838	No
2/24/2023 8:35	0.338	0.013	0.0141	No	0.2905	No
2/24/2023 8:36	0.339	0.017	0.0141	No	0.2965	No
2/24/2023 8:37	0.336	0.015	0.0141	No	0.3022	No
2/24/2023 8:38	0.338	0.015	0.0141	No	0.3077	No
2/24/2023 8:39	0.347	0.015	0.0141	No	0.3132	No
2/24/2023 8:40	0.352	0.015	0.0143	No	0.3185	No
2/24/2023 8:41	0.357	0.012	0.0143	No	0.3243	No
2/24/2023 8:42	0.359	0.029	0.0153	No	0.3298	No
2/24/2023 8:43	0.385	0.024	0.016	No	0.3362	No
2/24/2023 8:44	0.355	0.027	0.0171	No	0.3405	No
2/24/2023 8:45	0.363	0.018	0.0175	No	0.3457	No
2/24/2023 8:46	0.364	0.016	0.0175	No	0.3497	No
2/24/2023 8:47	0.37	0.014	0.0171	No	0.3515	No
2/24/2023 8:48	0.379	0.018	0.0174	No	0.3546	No
2/24/2023 8:49	0.371	0.042	0.0193	No	0.3569	No
2/24/2023 8:50	0.354	0.018	0.0197	No	0.3579	No
2/24/2023 8:51	0.36	0.015	0.0195	No	0.3593	No
2/24/2023 8:52	0.358	0.018	0.0197	No	0.3608	No
2/24/2023 8:53	0.359	0.013	0.0196	No	0.3622	No
2/24/2023 8:54	0.36	0.014	0.0195	No	0.3631	No
2/24/2023 8:55	0.364	0.014	0.0195	No	0.3639	No
2/24/23 8:56	0.366	0.018	0.0199	No	0.3645	No
2/24/23 8:57	0.373	0.01	0.0186	No	0.3654	No
2/24/23 8:58	0.364	0.011	0.0177	No	0.364	No
2/24/23 8:59	0.357	0.01	0.0166	No	0.3641	No
2/24/23 9:00	0.359	0.011	0.0161	No	0.3639	No
2/24/23 9:01	0.355	0.009	0.0157	No	0.3633	No

Upwind Station

Time	Instaneous VOC (ppm)	Instaneous Mass Conc. Total (mg/m ³)	Mass Conc. Total mg/m ³ AVG 15m (mg/m ³)	Dust Exceedance	VOC ppm AVG 15m (ppm)	VOC Exceedance
2/24/23 9:02	0.368	0.008	0.0153	No	0.3631	No
2/24/23 9:03	0.373	0.008	0.0146	No	0.3627	No
2/24/23 9:04	0.367	0.009	0.0124	No	0.3625	No
2/24/23 9:05	0.369	0.01	0.0119	No	0.3635	No
2/24/23 9:06	0.364	0.012	0.0117	No	0.3637	No
2/24/23 9:07	0.372	0.014	0.0114	No	0.3647	No
2/24/23 9:08	0.375	0.009	0.0111	No	0.3657	No
2/24/23 9:09	0.383	0.013	0.0111	No	0.3673	No
2/24/23 9:10	0.381	0.01	0.0108	No	0.3684	No
2/24/23 9:11	0.394	0.013	0.0105	No	0.3703	No
2/24/23 9:12	0.382	0.01	0.0105	No	0.3709	No
2/24/23 9:13	0.372	0.01	0.0104	No	0.3714	No
2/24/23 9:14	0.363	0.008	0.0103	No	0.3718	No
2/24/23 9:15	0.36	0.014	0.0105	No	0.3719	No
2/24/23 9:16	0.351	0.038	0.0124	No	0.3716	No
2/24/23 9:17	0.351	0.018	0.0131	No	0.3705	No
2/24/23 9:18	0.343	0.013	0.0134	No	0.3685	No
2/24/23 9:19	0.338	0.008	0.0133	No	0.3665	No
2/24/23 9:20	0.347	0.015	0.0137	No	0.3651	No
2/24/23 9:21	0.349	0.016	0.0139	No	0.3641	No
2/24/23 9:22	0.337	0.017	0.0141	No	0.3617	No
2/24/23 9:23	0.344	0.013	0.0144	No	0.3597	No
2/24/23 9:24	0.355	0.012	0.0143	No	0.3578	No
2/24/23 9:25	0.35	0.014	0.0146	No	0.3557	No
2/24/23 9:26	0.349	0.014	0.0147	No	0.3527	No
2/24/23 9:27	0.353	0.016	0.0151	No	0.3508	No
2/24/23 9:28	0.344	0.019	0.0157	No	0.3489	No
2/24/23 9:29	0.346	0.013	0.016	No	0.3478	No
2/24/23 9:30	0.343	0.007	0.0155	No	0.3467	No
2/24/23 9:31	0.344	0.007	0.0135	No	0.3462	No
2/24/23 9:32	0.358	0.023	0.0138	No	0.3467	No
2/24/23 9:33	0.35	0.01	0.0136	No	0.3471	No
2/24/23 9:34	0.354	0.009	0.0137	No	0.3482	No
2/24/23 9:35	0.353	0.006	0.0131	No	0.3486	No
2/24/23 9:36	0.367	0.011	0.0127	No	0.3498	No
2/24/23 9:37	0.366	0.009	0.0122	No	0.3517	No
2/24/23 9:38	0.366	0.008	0.0119	No	0.3532	No
2/24/23 9:39	0.386	0.007	0.0115	No	0.3553	No
2/24/23 9:40	0.381	0.008	0.0111	No	0.3573	No
2/24/23 9:41	0.386	0.013	0.0111	No	0.3598	No
2/24/23 9:42	0.39	0.009	0.0106	No	0.3623	No
2/24/23 9:43	0.388	0.011	0.0101	No	0.3652	No
2/24/23 9:44	0.41	0.02	0.0105	No	0.3695	No
2/24/23 9:45	0.402	0.011	0.0108	No	0.3734	No
2/24/23 9:46	0.394	0.015	0.0113	No	0.3767	No
2/24/23 9:47	0.45	0.014	0.0107	No	0.3829	No
2/24/23 9:48	0.446	0.013	0.0109	No	0.3893	No
2/24/23 9:49	0.495	0.009	0.0109	No	0.3987	No
2/24/23 9:50	0.502	0.008	0.0111	No	0.4086	No
2/24/23 9:51	0.519	0.005	0.0107	No	0.4187	No
2/24/23 9:52	0.55	0.006	0.0105	No	0.431	No
2/24/23 9:53	0.558	0.006	0.0103	No	0.4438	No

Upwind Station

Time	Instaneous VOC (ppm)	Instaneous Mass Conc. Total (mg/m ³)	Mass Conc. Total mg/m ³ AVG 15m (mg/m ³)	Dust Exceedance	VOC ppm AVG 15m (ppm)	VOC Exceedance
2/24/23 9:54	0.509	0.011	0.0106	No	0.452	No
2/24/23 9:55	0.511	0.008	0.0106	No	0.4607	No
2/24/23 9:56	2.37	0.018	0.0109	No	0.5929	No
2/24/23 9:57	1.956	0.015	0.0113	No	0.6973	No
2/24/23 9:58	1.717	0.009	0.0112	No	0.7859	No
2/24/23 9:59	1.524	0.008	0.0104	No	0.8602	No
2/24/23 10:00	1.71	0.01	0.0103	No	0.9474	No
2/24/23 10:01	1.768	0.012	0.0101	No	1.039	No
2/24/23 10:02	1.364	0.01	0.0099	No	1.0999	No
2/24/23 10:03	1.373	0.009	0.0096	No	1.1617	No
2/24/23 10:04	1.192	0.013	0.0099	No	1.2082	No
2/24/23 10:05	1.051	0.01	0.01	No	1.2448	No
2/24/23 10:06	0.974	0.007	0.0101	No	1.2751	No
2/24/23 10:07	0.971	0.013	0.0106	No	1.3032	No
2/24/23 10:08	1.02	0.01	0.0109	No	1.334	No
2/24/23 10:09	0.875	0.009	0.0107	No	1.3584	No
2/24/23 10:10	0.966	0.009	0.0108	No	1.3887	No
2/24/23 10:11	0.837	0.01	0.0103	No	1.2865	No
2/24/23 10:12	0.891	0.015	0.0103	No	1.2155	No
2/24/23 10:13	0.809	0.011	0.0104	No	1.155	No
2/24/23 10:14	0.88	0.009	0.0105	No	1.1121	No
2/24/23 10:15	0.795	0.009	0.0104	No	1.0511	No
2/24/23 10:16	0.747	0.006	0.01	No	0.983	No
2/24/23 10:17	0.785	0.013	0.0102	No	0.9444	No
2/24/23 10:18	0.742	0.008	0.0101	No	0.9023	No
2/24/23 10:19	0.852	0.008	0.0098	No	0.8797	No
2/24/23 10:20	0.823	0.008	0.0097	No	0.8645	No
2/24/23 10:21	0.836	0.006	0.0096	No	0.8553	No
2/24/23 10:22	0.843	0.007	0.0092	No	0.8467	No
2/24/23 10:23	0.831	0.009	0.0091	No	0.8341	No
2/24/23 10:24	0.769	0.01	0.0092	No	0.8271	No
2/24/23 10:25	0.741	0.008	0.0091	No	0.8121	No
2/24/23 10:26	0.758	0.007	0.0089	No	0.8068	No
2/24/23 10:27	0.749	0.007	0.0084	No	0.7973	No
2/24/23 10:28	0.716	0.011	0.0084	No	0.7911	No
2/24/23 10:29	0.717	0.014	0.0087	No	0.7803	No
2/24/23 10:30	0.722	0.019	0.0094	No	0.7754	No
2/24/23 10:31	0.731	0.013	0.0099	No	0.7743	No
2/24/23 10:32	0.703	0.012	0.0098	No	0.7689	No
2/24/23 10:33	0.731	0.011	0.01	No	0.7681	No
2/24/23 10:34	0.785	0.009	0.0101	No	0.7637	No
2/24/23 10:35	0.743	0.007	0.01	No	0.7583	No
2/24/23 10:36	0.737	0.014	0.0105	No	0.7517	No
2/24/23 10:37	0.732	0.022	0.0115	No	0.7443	No
2/24/23 10:38	0.705	0.012	0.0117	No	0.7359	No
2/24/23 10:39	0.693	0.021	0.0125	No	0.7309	No
2/24/23 10:40	0.668	0.011	0.0127	No	0.726	No
2/24/23 10:41	0.669	0.011	0.0129	No	0.7201	No
2/24/23 10:42	0.66	0.013	0.0133	No	0.7141	No
2/24/23 10:43	0.711	0.012	0.0134	No	0.7138	No
2/24/23 10:44	0.705	0.01	0.0131	No	0.713	No
2/24/23 10:45	0.715	0.008	0.0124	No	0.7125	No

Upwind Station

Time	Instaneous VOC (ppm)	Instaneous Mass Conc. Total (mg/m ³)	Mass Conc. Total mg/m ³ AVG 15m (mg/m ³)	Dust Exceedance	VOC ppm AVG 15m (ppm)	VOC Exceedance
2/24/23 10:46	0.718	0.008	0.0121	No	0.7117	No
2/24/23 10:47	0.691	0.022	0.0127	No	0.7109	No
2/24/23 10:48	0.683	0.01	0.0127	No	0.7077	No
2/24/23 10:49	0.694	0.012	0.0129	No	0.7016	No
2/24/23 10:50	0.7	0.014	0.0133	No	0.6987	No
2/24/23 10:51	0.695	0.012	0.0132	No	0.6959	No
2/24/23 10:52	0.68	0.012	0.0125	No	0.6925	No
2/24/23 10:53	0.674	0.01	0.0124	No	0.6904	No
2/24/23 10:54	0.667	0.008	0.0115	No	0.6887	No
2/24/23 10:55	0.689	0.01	0.0115	No	0.6901	No
2/24/23 10:56	0.659	0.008	0.0113	No	0.6894	No
2/24/23 10:57	0.659	0.01	0.0111	No	0.6893	No
2/24/23 10:58	0.701	0.008	0.0108	No	0.6887	No
2/24/23 10:59	0.714	0.012	0.0109	No	0.6893	No
2/24/23 11:00	0.675	0.015	0.0114	No	0.6866	No
2/24/23 11:01	0.672	0.009	0.0115	No	0.6835	No
2/24/23 11:02	0.679	0.012	0.0108	No	0.6827	No
2/24/23 11:03	0.714	0.01	0.0108	No	0.6848	No
2/24/23 11:04	0.69	0.007	0.0105	No	0.6845	No
2/24/23 11:05	0.698	0.01	0.0102	No	0.6844	No
2/24/23 11:06	0.681	0.017	0.0105	No	0.6835	No
2/24/23 11:07	0.709	0.013	0.0106	No	0.6854	No
2/24/23 11:08	0.675	0.013	0.0108	No	0.6855	No
2/24/23 11:09	0.707	0.011	0.011	No	0.6881	No
2/24/23 11:10	0.674	0.009	0.0109	No	0.6871	No
2/24/23 11:11	0.719	0.008	0.0109	No	0.6911	No
2/24/23 11:12	0.697	0.009	0.0109	No	0.6937	No
2/24/23 11:13	0.697	0.011	0.0111	No	0.6934	No
2/24/23 11:14	0.688	0.013	0.0111	No	0.6917	No
2/24/23 11:15	0.68	0.023	0.0117	No	0.692	No
2/24/23 11:16	0.715	0.009	0.0117	No	0.6949	No
2/24/23 11:17	0.718	0.007	0.0113	No	0.6975	No
2/24/23 11:18	0.71	0.007	0.0111	No	0.6972	No
2/24/23 11:19	0.728	0.008	0.0112	No	0.6997	No
2/24/23 11:20	0.707	0.007	0.011	No	0.7003	No
2/24/23 11:21	0.715	0.006	0.0103	No	0.7026	No
2/24/23 11:22	0.704	0.007	0.0099	No	0.7023	No
2/24/23 11:23	0.741	0.015	0.01	No	0.7067	No
2/24/23 11:24	0.731	0.014	0.0102	No	0.7083	No
2/24/23 11:25	0.701	0.009	0.0102	No	0.7101	No
2/24/23 11:26	0.716	0.011	0.0104	No	0.7099	No
2/24/23 11:27	0.756	0.009	0.0104	No	0.7138	No
2/24/23 11:28	0.726	0.009	0.0103	No	0.7157	No
2/24/23 11:29	0.792	0.022	0.0109	No	0.7227	No
2/24/23 11:30	0.727	0.011	0.0101	No	0.7258	No
2/24/23 11:31	0.726	0.007	0.0099	No	0.7265	No
2/24/23 11:32	0.727	0.008	0.01	No	0.7271	No
2/24/23 11:33	0.727	0.014	0.0105	No	0.7283	No
2/24/23 11:34	0.709	0.015	0.0109	No	0.727	No
2/24/23 11:35	0.704	0.01	0.0111	No	0.7268	No
2/24/23 11:36	0.712	0.01	0.0114	No	0.7266	No
2/24/23 11:37	0.689	0.008	0.0115	No	0.7256	No

Upwind Station

Time	Instaneous VOC (ppm)	Instaneous Mass Conc. Total (mg/m ³)	Mass Conc. Total mg/m ³ AVG 15m (mg/m ³)	Dust Exceedance	VOC ppm AVG 15m (ppm)	VOC Exceedance
2/24/23 11:38	0.684	0.012	0.0113	No	0.7218	No
2/24/23 11:39	0.737	0.01	0.011	No	0.7222	No
2/24/23 11:40	0.717	0.011	0.0111	No	0.7233	No
2/24/23 11:41	0.694	0.028	0.0123	No	0.7218	No
2/24/23 11:42	0.71	0.014	0.0126	No	0.7187	No
2/24/23 11:43	0.688	0.013	0.0129	No	0.7162	No
2/24/23 11:44	0.718	0.024	0.013	No	0.7113	No
2/24/23 11:45	0.767	0.011	0.013	No	0.7139	No
2/24/23 11:46	0.768	0.012	0.0133	No	0.7167	No
2/24/23 11:47	0.759	0.01	0.0135	No	0.7189	No
2/24/23 11:48	0.739	0.016	0.0136	No	0.7197	No
2/24/23 11:49	0.738	0.011	0.0133	No	0.7216	No
2/24/23 11:50	0.711	0.011	0.0134	No	0.7221	No
2/24/23 11:51	0.713	0.011	0.0135	No	0.7221	No
2/24/23 11:52	0.707	0.017	0.0141	No	0.7233	No
2/24/23 11:53	0.721	0.011	0.014	No	0.7258	No
2/24/23 11:54	0.722	0.012	0.0141	No	0.7248	No
2/24/23 11:55	0.697	0.014	0.0143	No	0.7235	No
2/24/23 11:56	0.714	0.011	0.0132	No	0.7248	No
2/24/23 11:57	0.722	0.009	0.0129	No	0.7256	No
2/24/23 11:58	0.713	0.009	0.0126	No	0.7273	No
2/24/23 11:59	0.735	0.008	0.0115	No	0.7284	No
2/24/23 12:00	0.72	0.014	0.0117	No	0.7253	No
2/24/23 12:01	0.697	0.01	0.0116	No	0.7205	No
2/24/23 12:02	0.703	0.011	0.0117	No	0.7168	No
2/24/23 12:03	0.717	0.007	0.0111	No	0.7153	No
2/24/23 12:04	0.706	0.01	0.011	No	0.7132	No
2/24/23 12:05	0.708	0.017	0.0114	No	0.713	No
2/24/23 12:06	0.667	0.042	0.0135	No	0.7099	No
2/24/23 12:07	0.681	0.012	0.0131	No	0.7082	No
2/24/23 12:08	0.676	0.011	0.0131	No	0.7052	No
2/24/23 12:09	0.749	0.016	0.0134	No	0.707	No
2/24/23 12:10	0.694	0.015	0.0135	No	0.7068	No
2/24/23 12:11	0.686	0.013	0.0136	No	0.7049	No
2/24/23 12:12	0.715	0.009	0.0136	No	0.7045	No
2/24/23 12:13	0.698	0.011	0.0137	No	0.7035	No
2/24/23 12:14	0.714	0.009	0.0138	No	0.7021	No
2/24/23 12:15	0.717	0.009	0.0135	No	0.7019	No
2/24/23 12:16	0.723	0.009	0.0134	No	0.7036	No
2/24/23 12:17	0.726	0.007	0.0131	No	0.7051	No
2/24/23 12:18	0.742	0.009	0.0133	No	0.7068	No
2/24/23 12:19	0.751	0.01	0.0133	No	0.7098	No
2/24/23 12:20	0.727	0.01	0.0128	No	0.7111	No
2/24/23 12:21	0.763	0.006	0.0104	No	0.7175	No
2/24/23 12:22	0.717	0.007	0.0101	No	0.7199	No
2/24/23 12:23	0.732	0.008	0.0099	No	0.7236	No
2/24/23 12:24	0.726	0.007	0.0093	No	0.7221	No
2/24/23 12:25	0.773	0.007	0.0087	No	0.7273	No
2/24/23 12:26	0.751	0.007	0.0083	No	0.7317	No
2/24/23 12:27	0.732	0.007	0.0082	No	0.7328	No
2/24/23 12:28	0.71	0.014	0.0084	No	0.7336	No
2/24/23 12:29	0.725	0.024	0.0094	No	0.7343	No

Upwind Station

Time	Instaneous VOC (ppm)	Instaneous Mass Conc. Total (mg/m ³)	Mass Conc. Total mg/m ³ AVG 15m (mg/m ³)	Dust Exceedance	VOC ppm AVG 15m (ppm)	VOC Exceedance
2/24/23 12:30	0.767	0.008	0.0093	No	0.7377	No
2/24/23 12:31	0.75	0.006	0.0091	No	0.7395	No
2/24/23 12:32	0.767	0.012	0.0095	No	0.7422	No
2/24/23 12:33	0.758	0.01	0.0095	No	0.7433	No
2/24/23 12:34	0.745	0.011	0.0096	No	0.7429	No
2/24/23 12:35	0.74	0.009	0.0095	No	0.7437	No
2/24/23 12:36	0.724	0.009	0.0097	No	0.7411	No
2/24/23 12:37	0.723	0.009	0.0099	No	0.7415	No
2/24/23 12:38	0.722	0.011	0.0101	No	0.7409	No
2/24/23 12:39	0.739	0.009	0.0102	No	0.7417	No
2/24/23 12:40	0.738	0.009	0.0103	No	0.7394	No
2/24/23 12:41	0.745	0.022	0.0113	No	0.739	No
2/24/23 12:42	0.753	0.015	0.0119	No	0.7404	No
2/24/23 12:43	0.728	0.011	0.0117	No	0.7416	No
2/24/23 12:44	0.728	0.011	0.0108	No	0.7418	No
2/24/23 12:45	0.702	0.014	0.0112	No	0.7375	No
2/24/23 12:46	0.709	0.007	0.0113	No	0.7347	No
2/24/23 12:47	0.742	0.017	0.0116	No	0.7331	No
2/24/23 12:48	0.731	0.027	0.0127	No	0.7313	No
2/24/23 12:49	0.707	0.04	0.0147	No	0.7287	No
2/24/23 12:50	0.705	0.013	0.0149	No	0.7264	No
2/24/23 12:51	0.702	0.031	0.0164	No	0.7249	No
2/24/23 12:52	0.683	0.018	0.017	No	0.7223	No
2/24/23 12:53	0.711	0.018	0.0175	No	0.7215	No
2/24/23 12:54	0.72	0.069	0.0215	No	0.7203	No
2/24/23 12:55	0.716	0.027	0.0227	No	0.7188	No
2/24/23 12:56	0.692	0.025	0.0229	No	0.7153	No
2/24/23 12:57	0.695	0.018	0.0231	No	0.7114	No
2/24/23 12:58	0.7	0.016	0.0234	No	0.7095	No
2/24/23 12:59	0.721	0.017	0.0238	No	0.7091	No
2/24/23 13:00	0.701	0.022	0.0243	No	0.709	No
2/24/23 13:01	0.742	0.02	0.0252	No	0.7112	No
2/24/23 13:02	0.708	0.03	0.0261	No	0.7089	No
2/24/23 13:03	0.704	0.011	0.025	No	0.7071	No
2/24/23 13:04	0.713	0.013	0.0232	No	0.7075	No
2/24/23 13:05	0.736	0.018	0.0235	No	0.7096	No
2/24/23 13:06	0.725	0.019	0.0227	No	0.7111	No
2/24/23 13:07	0.705	0.015	0.0225	No	0.7126	No
2/24/23 13:08	0.74	0.017	0.0225	No	0.7145	No
2/24/23 13:09	0.727	0.016	0.0189	No	0.715	No
2/24/23 13:10	0.742	0.017	0.0183	No	0.7167	No
2/24/23 13:11	0.734	0.013	0.0175	No	0.7195	No
2/24/23 13:12	0.72	0.018	0.0175	No	0.7212	No
2/24/23 13:13	0.712	0.017	0.0175	No	0.722	No
2/24/23 13:14	0.697	0.015	0.0174	No	0.7204	No
2/24/23 13:15	0.686	0.018	0.0171	No	0.7194	No
2/24/23 13:16	0.688	0.014	0.0167	No	0.7158	No
2/24/23 13:17	0.679	0.016	0.0158	No	0.7139	No
2/24/23 13:18	0.698	0.009	0.0157	No	0.7135	No
2/24/23 13:19	0.67	0.014	0.0157	No	0.7106	No
2/24/23 13:20	0.682	0.012	0.0153	No	0.707	No
2/24/23 13:21	0.682	0.015	0.0151	No	0.7041	No

Upwind Station

Time	Instantaneous VOC (ppm)	Instantaneous Mass Conc. Total (mg/m ³)	Mass Conc. Total mg/m ³ AVG 15m (mg/m ³)	Dust Exceedance	VOC ppm AVG 15m (ppm)	VOC Exceedance
2/24/23 13:22	0.684	0.008	0.0146	No	0.7027	No
2/24/23 13:23	0.674	0.015	0.0145	No	0.6983	No
2/24/23 13:24	0.678	0.013	0.0143	No	0.6951	No
2/24/23 13:25	0.662	0.013	0.014	No	0.6897	No
2/24/23 13:26	0.649	0.011	0.0139	No	0.6841	No
2/24/23 13:27	0.658	0.019	0.0139	No	0.6799	No
2/24/23 13:28	0.65	0.012	0.0136	No	0.6758	No
2/24/23 13:29	0.665	0.011	0.0133	No	0.6737	No
2/24/23 13:30	0.665	0.013	0.013	No	0.6723	No
2/24/23 13:31	0.662	0.016	0.0131	No	0.6705	No
2/24/23 13:32	0.653	0.013	0.0129	No	0.6688	No
2/24/23 13:33	0.656	0.013	0.0132	No	0.666	No
2/24/23 13:34	0.653	0.012	0.0131	No	0.6649	No
2/24/23 13:35	0.681	0.014	0.0132	No	0.6648	No
2/24/23 13:36	0.662	0.014	0.0131	No	0.6635	No
2/24/23 13:37	0.652	0.009	0.0132	No	0.6613	No
2/24/23 13:38	0.652	0.009	0.0128	No	0.6599	No
2/24/23 13:39	0.664	0.01	0.0126	No	0.6589	No
2/24/23 13:40	0.694	0.01	0.0124	No	0.6611	No
2/24/23 13:41	0.69	0.012	0.0125	No	0.6638	No
2/24/23 13:42	0.679	0.01	0.0119	No	0.6652	No
2/24/23 13:43	0.724	0.009	0.0117	No	0.6701	No
2/24/23 13:44	0.687	0.008	0.0115	No	0.6716	No
2/24/23 13:45	0.72	0.009	0.0112	No	0.6753	No
2/24/23 13:46	0.709	0.008	0.0107	No	0.6784	No
2/24/23 13:47	0.726	0.01	0.0105	No	0.6833	No
2/24/23 13:48	0.736	0.009	0.0102	No	0.6886	No
2/24/23 13:49	0.74	0.014	0.0103	No	0.6944	No
2/24/23 13:50	0.725	0.009	0.01	No	0.6973	No
2/24/23 13:51	0.699	0.008	0.0096	No	0.6998	No
2/24/23 13:52	0.69	0.009	0.0096	No	0.7023	No
2/24/23 13:53	0.686	0.007	0.0095	No	0.7046	No
2/24/23 13:54	0.705	0.012	0.0096	No	0.7073	No
2/24/23 13:55	0.698	0.022	0.0104	No	0.7076	No
2/24/23 13:56	0.67	0.011	0.0103	No	0.7063	No
2/24/23 13:57	0.73	0.011	0.0104	No	0.7097	No
2/24/23 13:58	0.691	0.009	0.0104	No	0.7075	No
2/24/23 13:59	0.682	0.03	0.0119	No	0.7071	No
2/24/23 14:00	0.669	0.007	0.0117	No	0.7037	No
2/24/23 14:01	0.671	0.01	0.0119	No	0.7012	No
2/24/23 14:02	0.689	0.011	0.0119	No	0.6987	No
2/24/23 14:03	0.702	0.009	0.0119	No	0.6965	No
2/24/23 14:04	0.69	0.016	0.0121	No	0.6931	No
2/24/23 14:05	0.699	0.014	0.0124	No	0.6914	No
2/24/23 14:06	0.685	0.016	0.0129	No	0.6905	No
2/24/23 14:07	0.665	0.012	0.0131	No	0.6888	No
2/24/23 14:08	0.653	0.009	0.0133	No	0.6866	No
2/24/23 14:09	0.662	0.01	0.0131	No	0.6837	No
2/24/23 14:10	0.657	0.009	0.0123	No	0.681	No
2/24/23 14:11	0.659	0.012	0.0123	No	0.6803	No
2/24/23 14:12	0.68	0.01	0.0123	No	0.6769	No
2/24/23 14:13	0.678	0.009	0.0123	No	0.6761	No

Upwind Station						
Time	Instaneous VOC (ppm)	Instaneous Mass Conc. Total (mg/m ³)	Mass Conc. Total mg/m ³ AVG 15m (mg/m ³)	Dust Exceedance	VOC ppm AVG 15m (ppm)	VOC Exceedance
2/24/23 14:14	0.69	0.01	0.0109	No	0.6766	No
2/24/23 14:15	0.676	0.008	0.011	No	0.6771	No
2/24/23 14:16	0.669	0.008	0.0109	No	0.6769	No
2/24/23 14:17	0.673	0.014	0.0111	No	0.6759	No
2/24/23 14:18	0.684	0.011	0.0112	No	0.6747	No
2/24/23 14:19	0.671	0.01	0.0108	No	0.6734	No
2/24/23 14:20	0.709	0.01	0.0105	No	0.6741	No
2/24/23 14:21	0.705	0.013	0.0103	No	0.6754	No
2/24/23 14:22	0.688	0.01	0.0102	No	0.6769	No
2/24/23 14:23	0.69	0.009	0.0102	No	0.6794	No
2/24/23 14:24	0.697	0.014	0.0105	No	0.6817	No
2/24/23 14:25	0.674	0.025	0.0115	No	0.6829	No
2/24/23 14:26	0.665	0.017	0.0119	No	0.6833	No
2/24/23 14:27	0.655	0.006	0.0116	No	0.6816	No
2/24/23 14:28	0.71	0.01	0.0117	No	0.6837	No
2/24/23 14:29	0.68	0.011	0.0117	No	0.6831	No
2/24/23 14:30	0.661	0.016	0.0123	No	0.6821	No
2/24/23 14:31	0.661	0.011	0.0125	No	0.6815	No
2/24/23 14:32	0.647	0.035	0.0139	No	0.6798	No
2/24/23 14:33	0.636	0.011	0.0139	No	0.6766	No
2/24/23 14:34	0.674	0.014	0.0141	No	0.6768	No
2/24/23 14:35	0.657	0.009	0.0141	No	0.6733	No
2/24/23 14:36	0.643	0.009	0.0138	No	0.6692	No
2/24/23 14:37	0.643	0.011	0.0139	No	0.6662	No
2/24/23 14:38	0.634	0.014	0.0142	No	0.6625	No
2/24/23 14:39	0.677	0.008	0.0138	No	0.6611	No
2/24/23 14:40	0.666	0.012	0.0129	No	0.6606	No
2/24/23 14:41	0.66	0.01	0.0125	No	0.6603	No
2/24/23 14:42	0.647	0.012	0.0129	No	0.6597	No
2/24/23 14:43	0.657	0.014	0.0131	No	0.6562	No
2/24/23 14:44	0.646	0.018	0.0136	No	0.6539	No
2/24/23 14:45	0.626	0.03	0.0145	No	0.6516	No
2/24/23 14:46	0.64	0.014	0.0147	No	0.6502	No
2/24/23 14:47	0.656	0.017	0.0135	No	0.6508	No
2/24/23 14:48	0.652	0.015	0.0138	No	0.6519	No
2/24/23 14:49	0.629	0.019	0.0141	No	0.6489	No
2/24/23 14:50	0.66	0.013	0.0144	No	0.6491	No
2/24/23 14:51	0.657	0.01	0.0145	No	0.65	No
2/24/23 14:52	0.651	0.01	0.0144	No	0.6505	No
2/24/23 14:53	0.638	0.008	0.014	No	0.6508	No
2/24/23 14:54	0.626	0.012	0.0143	No	0.6474	No
2/24/23 14:55	0.641	0.008	0.014	No	0.6457	No
2/24/23 14:56	0.656	0.009	0.0139	No	0.6455	No
2/24/23 14:57	0.645	0.015	0.0141	No	0.6453	No
2/24/23 14:58	0.653	0.011	0.0139	No	0.6451	No
2/24/23 14:59	0.682	0.015	0.0137	No	0.6475	No
2/24/23 15:00	0.672	0.011	0.0125	No	0.6505	No
2/24/23 15:01	0.688	0.01	0.0122	No	0.6537	No
2/24/23 15:02	0.681	0.009	0.0117	No	0.6554	No
2/24/23 15:03	0.687	0.012	0.0115	No	0.6577	No
2/24/23 15:04	0.668	0.015	0.0112	No	0.6603	No
2/24/23 15:05	0.665	0.015	0.0113	No	0.6607	No

Upwind Station

Time	Instaneous VOC (ppm)	Instaneous Mass Conc. Total (mg/m ³)	Mass Conc. Total mg/m ³ AVG 15m (mg/m ³)	Dust Exceedance	VOC ppm AVG 15m (ppm)	VOC Exceedance
2/24/23 15:06	0.688	0.01	0.0113	No	0.6627	No
2/24/23 15:07	0.693	0.009	0.0113	No	0.6655	No
2/24/23 15:08	0.695	0.012	0.0115	No	0.6693	No
2/24/23 15:09	0.69	0.019	0.012	No	0.6736	No
2/24/23 15:10	0.629	0.012	0.0123	No	0.6728	No
2/24/23 15:11	0.621	0.008	0.0122	No	0.6705	No
2/24/23 15:12	0.633	0.01	0.0119	No	0.6697	No
2/24/23 15:13	0.628	0.014	0.0121	No	0.668	No

Downwind Station						
Time	Instantaneous VOC (ppm)	Instantaneous Mass Conc. Total (mg/m ³)	Mass Conc. Total mg/m ³ AVG 15m (mg/m ³)	Dust Exceedance	VOC ppm AVG 15m (ppm)	VOC Exceedance
2/24/2023 7:24	0	0.047	0.047	No	0	No
2/24/2023 7:25	0.001	0.134	0.0905	No	0.0005	No
2/24/2023 7:26	0	0.029	0.07	No	0.0003	No
2/24/2023 7:27	0	0.026	0.059	No	0.0003	No
2/24/2023 7:28	0	0.027	0.0526	No	0.0002	No
2/24/2023 7:29	0.001	0.028	0.0485	No	0.0003	No
2/24/2023 7:30	0.003	0.031	0.046	No	0.0007	No
2/24/2023 7:31	0.027	0.029	0.0439	No	0.004	No
2/24/2023 7:32	0.009	0.028	0.0421	No	0.0046	No
2/24/2023 7:33	0.013	0.028	0.0407	No	0.0054	No
2/24/2023 7:34	0.02	0.028	0.0395	No	0.0067	No
2/24/2023 7:35	0.02	0.028	0.0386	No	0.0078	No
2/24/2023 7:36	0.02	0.027	0.0377	No	0.0088	No
2/24/2023 7:37	0.023	0.025	0.0368	No	0.0098	No
2/24/2023 7:38	0.023	0.027	0.0361	No	0.0107	No
2/24/2023 7:39	0.023	0.025	0.0347	No	0.0122	No
2/24/2023 7:40	0.03	0.026	0.0275	No	0.0141	No
2/24/2023 7:41	0.03	0.028	0.0274	No	0.0161	No
2/24/2023 7:42	0.032	0.026	0.0274	No	0.0183	No
2/24/2023 7:43	0.036	0.028	0.0275	No	0.0207	No
2/24/2023 7:44	0.037	0.029	0.0275	No	0.0231	No
2/24/2023 7:45	0.034	0.029	0.0274	No	0.0251	No
2/24/2023 7:46	0.046	0.031	0.0275	No	0.0264	No
2/24/2023 7:47	0.041	0.032	0.0278	No	0.0285	No
2/24/2023 7:48	0.038	0.031	0.028	No	0.0302	No
2/24/2023 7:49	0.043	0.031	0.0282	No	0.0317	No
2/24/2023 7:50	0.045	0.032	0.0285	No	0.0334	No
2/24/2023 7:51	0.046	0.031	0.0287	No	0.0351	No
2/24/2023 7:52	0.048	0.03	0.0291	No	0.0368	No
2/24/2023 7:53	0.05	0.029	0.0292	No	0.0386	No
2/24/2023 7:54	0.056	0.028	0.0294	No	0.0408	No
2/24/2023 7:55	0.061	0.038	0.0302	No	0.0429	No
2/24/2023 7:56	0.063	0.042	0.0311	No	0.0451	No
2/24/2023 7:57	0.073	0.041	0.0321	No	0.0478	No
2/24/2023 7:58	0.086	0.042	0.0331	No	0.0511	No
2/24/2023 7:59	0.143	0.029	0.0331	No	0.0582	No
2/24/2023 8:00	0.096	0.029	0.0331	No	0.0623	No
2/24/2023 8:01	0.073	0.025	0.0327	No	0.0641	No
2/24/2023 8:02	0.106	0.023	0.0321	No	0.0685	No
2/24/2023 8:03	0.165	0.025	0.0317	No	0.0769	No
2/24/2023 8:04	0.109	0.022	0.0311	No	0.0813	No
2/24/2023 8:05	0.087	0.022	0.0304	No	0.0841	No
2/24/2023 8:06	0.091	0.023	0.0299	No	0.0871	No
2/24/2023 8:07	0.091	0.025	0.0295	No	0.09	No
2/24/2023 8:08	0.084	0.027	0.0294	No	0.0923	No
2/24/2023 8:09	0.085	0.029	0.0295	No	0.0942	No
2/24/2023 8:10	0.102	0.028	0.0288	No	0.0969	No
2/24/2023 8:11	0.096	0.029	0.0279	No	0.0991	No
2/24/2023 8:12	0.11	0.029	0.0271	No	0.1016	No
2/24/2023 8:13	0.125	0.028	0.0262	No	0.1042	No
2/24/2023 8:14	0.108	0.029	0.0262	No	0.1019	No
2/24/2023 8:15	0.124	0.029	0.0262	No	0.1037	No
2/24/2023 8:16	0.106	0.032	0.0267	No	0.1059	No
2/24/2023 8:17	0.141	0.031	0.0272	No	0.1083	No

Downwind Station						
Time	Instantaneous VOC (ppm)	Instantaneous Mass Conc. Total (mg/m ³)	Mass Conc. Total mg/m ³ AVG 15m (mg/m ³)	Dust Exceedance	VOC ppm AVG 15m (ppm)	VOC Exceedance
2/24/2023 8:18	0.121	0.032	0.0277	No	0.1053	No
2/24/2023 8:19	0.122	0.031	0.0283	No	0.1062	No
2/24/2023 8:20	0.143	0.037	0.0293	No	0.1099	No
2/24/2023 8:21	0.13	0.037	0.0302	No	0.1125	No
2/24/2023 8:22	0.132	0.033	0.0307	No	0.1153	No
2/24/2023 8:23	0.157	0.032	0.0311	No	0.1201	No
2/24/2023 8:24	0.13	0.03	0.0311	No	0.1231	No
2/24/2023 8:25	0.136	0.03	0.0313	No	0.1254	No
2/24/2023 8:26	0.151	0.031	0.0314	No	0.1291	No
2/24/2023 8:27	0.141	0.031	0.0315	No	0.1311	No
2/24/2023 8:28	0.131	0.03	0.0317	No	0.1315	No
2/24/2023 8:29	0.139	0.03	0.0317	No	0.1336	No
2/24/2023 8:30	0.14	0.03	0.0318	No	0.1347	No
2/24/2023 8:31	0.161	0.031	0.0317	No	0.1383	No
2/24/2023 8:32	0.145	0.032	0.0318	No	0.1386	No
2/24/2023 8:33	0.143	0.038	0.0322	No	0.1401	No
2/24/2023 8:34	0.151	0.049	0.0334	No	0.142	No
2/24/2023 8:35	0.14	0.037	0.0334	No	0.1418	No
2/24/2023 8:36	0.139	0.031	0.033	No	0.1424	No
2/24/2023 8:37	0.135	0.039	0.0334	No	0.1426	No
2/24/2023 8:38	0.14	0.033	0.0335	No	0.1415	No
2/24/2023 8:39	0.145	0.037	0.0339	No	0.1425	No
2/24/2023 8:40	0.135	0.043	0.0348	No	0.1424	No
2/24/2023 8:41	0.136	0.036	0.0351	No	0.1414	No
2/24/2023 8:42	0.135	0.039	0.0357	No	0.141	No
2/24/2023 8:43	0.137	0.043	0.0365	No	0.1414	No
2/24/2023 8:44	0.138	0.033	0.0367	No	0.1413	No
2/24/2023 8:45	0.139	0.036	0.0371	No	0.1413	No
2/24/2023 8:46	0.135	0.041	0.0378	No	0.1395	No
2/24/2023 8:47	0.134	0.04	0.0383	No	0.1388	No
2/24/2023 8:48	0.136	0.036	0.0382	No	0.1383	No
2/24/2023 8:49	0.143	0.03	0.0369	No	0.1378	No
2/24/2023 8:50	0.137	0.035	0.0368	No	0.1376	No
2/24/2023 8:51	0.137	0.034	0.037	No	0.1375	No
2/24/2023 8:52	0.124	0.034	0.0367	No	0.1367	No
2/24/2023 8:53	0.135	0.033	0.0367	No	0.1364	No
2/24/2023 8:54	0.136	0.032	0.0363	No	0.1358	No
2/24/2023 8:55	0.131	0.03	0.0355	No	0.1355	No
2/24/2023 8:56	0.134	0.028	0.0349	No	0.1354	No
2/24/2023 8:57	0.131	0.029	0.0343	No	0.1351	No
2/24/2023 8:58	0.126	0.028	0.0333	No	0.1344	No
2/24/2023 8:59	0.128	0.027	0.0329	No	0.1337	No
2/24/2023 9:00	0.132	0.026	0.0322	No	0.1333	No
2/24/2023 9:01	0.134	0.027	0.0313	No	0.1332	No
2/24/2023 9:02	0.145	0.025	0.0303	No	0.1339	No
2/24/23 9:03	0.137	0.025	0.0295	No	0.134	No
2/24/23 9:04	0.13	0.028	0.0294	No	0.1331	No
2/24/23 9:05	0.151	0.025	0.0287	No	0.1341	No
2/24/23 9:06	0.135	0.03	0.0285	No	0.1339	No
2/24/23 9:07	0.141	0.027	0.028	No	0.1351	No
2/24/23 9:08	0.136	0.024	0.0274	No	0.1351	No
2/24/23 9:09	0.135	0.022	0.0267	No	0.1351	No
2/24/23 9:10	0.136	0.087	0.0305	No	0.1354	No
2/24/23 9:11	0.135	0.025	0.0303	No	0.1355	No

Downwind Station						
Time	Instaneous VOC (ppm)	Instaneous Mass Conc. Total (mg/m ³)	Mass Conc. Total mg/m ³ AVG 15m (mg/m ³)	Dust Exceedance	VOC ppm AVG 15m (ppm)	VOC Exceedance
2/24/23 9:12	0.131	0.027	0.0302	No	0.1355	No
2/24/23 9:13	0.142	0.027	0.0301	No	0.1365	No
2/24/23 9:14	0.134	0.026	0.0301	No	0.1369	No
2/24/23 9:15	0.123	0.032	0.0305	No	0.1363	No
2/24/23 9:16	0.124	0.023	0.0302	No	0.1357	No
2/24/23 9:17	0.136	0.026	0.0303	No	0.1351	No
2/24/23 9:18	0.131	0.022	0.0301	No	0.1347	No
2/24/23 9:19	0.14	0.023	0.0297	No	0.1353	No
2/24/23 9:20	0.129	0.021	0.0295	No	0.1339	No
2/24/23 9:21	0.132	0.029	0.0294	No	0.1337	No
2/24/23 9:22	0.138	0.022	0.0291	No	0.1335	No
2/24/23 9:23	0.132	0.023	0.029	No	0.1332	No
2/24/23 9:24	0.133	0.022	0.029	No	0.1331	No
2/24/23 9:25	0.141	0.018	0.0244	No	0.1334	No
2/24/23 9:26	0.143	0.03	0.0247	No	0.1339	No
2/24/23 9:27	0.125	0.022	0.0244	No	0.1335	No
2/24/23 9:28	0.159	0.015	0.0236	No	0.1347	No
2/24/23 9:29	0.128	0.02	0.0232	No	0.1343	No
2/24/23 9:30	0.136	0.017	0.0222	No	0.1351	No
2/24/23 9:31	0.154	0.032	0.0228	No	0.1371	No
2/24/23 9:32	0.133	0.02	0.0224	No	0.1369	No
2/24/23 9:33	0.14	0.02	0.0223	No	0.1375	No
2/24/23 9:34	0.139	0.018	0.0219	No	0.1375	No
2/24/23 9:35	0.144	0.02	0.0219	No	0.1385	No
2/24/23 9:36	0.142	0.016	0.021	No	0.1391	No
2/24/23 9:37	0.161	0.021	0.0209	No	0.1407	No
2/24/23 9:38	0.136	0.022	0.0209	No	0.1409	No
2/24/23 9:39	0.143	0.014	0.0203	No	0.1416	No
2/24/23 9:40	0.21	0.018	0.0203	No	0.1462	No
2/24/23 9:41	0.146	0.021	0.0197	No	0.1464	No
2/24/23 9:42	0.144	0.01	0.0189	No	0.1477	No
2/24/23 9:43	0.149	0.013	0.0188	No	0.147	No
2/24/23 9:44	0.163	0.01	0.0181	No	0.1493	No
2/24/23 9:45	0.153	0.017	0.0181	No	0.1505	No
2/24/23 9:46	0.167	0.01	0.0167	No	0.1513	No
2/24/23 9:47	0.165	0.016	0.0164	No	0.1535	No
2/24/23 9:48	0.285	0.014	0.016	No	0.1631	No
2/24/23 9:49	0.334	0.017	0.0159	No	0.1761	No
2/24/23 9:50	0.173	0.015	0.0156	No	0.1781	No
2/24/23 9:51	0.189	0.01	0.0152	No	0.1812	No
2/24/23 9:52	0.159	0.011	0.0145	No	0.1811	No
2/24/23 9:53	0.155	0.012	0.0139	No	0.1823	No
2/24/23 9:54	0.167	0.059	0.0169	No	0.1839	No
2/24/23 9:55	0.151	0.025	0.0173	No	0.18	No
2/24/23 9:56	0.142	0.011	0.0167	No	0.1797	No
2/24/23 9:57	0.163	0.013	0.0169	No	0.181	No
2/24/23 9:58	0.156	0.012	0.0168	No	0.1815	No
2/24/23 9:59	0.145	0.013	0.017	No	0.1803	No
2/24/23 10:00	0.146	0.014	0.0168	No	0.1798	No
2/24/23 10:01	0.156	0.014	0.0171	No	0.1791	No
2/24/23 10:02	0.175	0.015	0.017	No	0.1797	No
2/24/23 10:03	0.161	0.021	0.0175	No	0.1715	No
2/24/23 10:04	0.148	0.016	0.0174	No	0.1591	No
2/24/23 10:05	0.186	0.016	0.0175	No	0.1599	No

Downwind Station						
Time	Instaneous VOC (ppm)	Instaneous Mass Conc. Total (mg/m ³)	Mass Conc. Total mg/m ³ AVG 15m (mg/m ³)	Dust Exceedance	VOC ppm AVG 15m (ppm)	VOC Exceedance
2/24/23 10:06	0.149	0.019	0.0181	No	0.1573	No
2/24/23 10:07	0.172	0.016	0.0184	No	0.1581	No
2/24/23 10:08	0.156	0.018	0.0188	No	0.1582	No
2/24/23 10:09	0.178	0.018	0.0161	No	0.1589	No
2/24/23 10:10	0.149	0.023	0.0159	No	0.1588	No
2/24/23 10:11	0.153	0.017	0.0163	No	0.1595	No
2/24/23 10:12	0.158	0.017	0.0166	No	0.1592	No
2/24/23 10:13	0.161	0.014	0.0167	No	0.1595	No
2/24/23 10:14	0.141	0.019	0.0171	No	0.1593	No
2/24/23 10:15	0.179	0.016	0.0173	No	0.1615	No
2/24/23 10:16	0.151	0.018	0.0175	No	0.1611	No
2/24/23 10:17	0.151	0.019	0.0178	No	0.1595	No
2/24/23 10:18	0.162	0.016	0.0175	No	0.1596	No
2/24/23 10:19	0.147	0.019	0.0177	No	0.1595	No
2/24/23 10:20	0.146	0.021	0.018	No	0.1569	No
2/24/23 10:21	0.151	0.016	0.0178	No	0.157	No
2/24/23 10:22	0.214	0.018	0.0179	No	0.1598	No
2/24/23 10:23	0.168	0.022	0.0182	No	0.1606	No
2/24/23 10:24	0.168	0.022	0.0185	No	0.1599	No
2/24/23 10:25	0.153	0.02	0.0183	No	0.1602	No
2/24/23 10:26	0.148	0.016	0.0182	No	0.1599	No
2/24/23 10:27	0.166	0.016	0.0181	No	0.1604	No
2/24/23 10:28	0.18	0.021	0.0186	No	0.1617	No
2/24/23 10:29	0.162	0.04	0.02	No	0.1631	No
2/24/23 10:30	0.158	0.022	0.0204	No	0.1617	No
2/24/23 10:31	0.153	0.017	0.0203	No	0.1618	No
2/24/23 10:32	0.165	0.019	0.0203	No	0.1627	No
2/24/23 10:33	0.162	0.02	0.0206	No	0.1627	No
2/24/23 10:34	0.161	0.023	0.0209	No	0.1637	No
2/24/23 10:35	0.164	0.017	0.0206	No	0.1649	No
2/24/23 10:36	0.165	0.028	0.0214	No	0.1658	No
2/24/23 10:37	0.156	0.023	0.0217	No	0.1619	No
2/24/23 10:38	0.159	0.025	0.0219	No	0.1613	No
2/24/23 10:39	0.153	0.02	0.0218	No	0.1603	No
2/24/23 10:40	0.18	0.029	0.0224	No	0.1621	No
2/24/23 10:41	0.177	0.031	0.0234	No	0.1641	No
2/24/23 10:42	0.172	0.022	0.0238	No	0.1645	No
2/24/23 10:43	0.169	0.024	0.024	No	0.1637	No
2/24/23 10:44	0.174	0.021	0.0227	No	0.1645	No
2/24/23 10:45	0.173	0.018	0.0225	No	0.1655	No
2/24/23 10:46	0.164	0.02	0.0227	No	0.1663	No
2/24/23 10:47	0.156	0.017	0.0225	No	0.1657	No
2/24/23 10:48	0.175	0.017	0.0223	No	0.1665	No
2/24/23 10:49	0.189	0.022	0.0223	No	0.1684	No
2/24/23 10:50	0.167	0.029	0.0231	No	0.1686	No
2/24/23 10:51	0.17	0.022	0.0227	No	0.1689	No
2/24/23 10:52	0.174	0.018	0.0223	No	0.1701	No
2/24/23 10:53	0.158	0.019	0.0219	No	0.1701	No
2/24/23 10:54	0.158	0.018	0.0218	No	0.1704	No
2/24/23 10:55	0.162	0.025	0.0215	No	0.1692	No
2/24/23 10:56	0.163	0.012	0.0203	No	0.1683	No
2/24/23 10:57	0.166	0.012	0.0196	No	0.1679	No
2/24/23 10:58	0.208	0.014	0.0189	No	0.1705	No
2/24/23 10:59	0.163	0.017	0.0187	No	0.1697	No

Downwind Station						
Time	Instaneous VOC (ppm)	Instaneous Mass Conc. Total (mg/m ³)	Mass Conc. Total mg/m ³ AVG 15m (mg/m ³)	Dust Exceedance	VOC ppm AVG 15m (ppm)	VOC Exceedance
2/24/23 11:00	0.17	0.013	0.0183	No	0.1695	No
2/24/23 11:01	0.173	0.025	0.0187	No	0.1701	No
2/24/23 11:02	0.158	0.015	0.0185	No	0.1703	No
2/24/23 11:03	0.176	0.013	0.0183	No	0.1703	No
2/24/23 11:04	0.171	0.017	0.0179	No	0.1691	No
2/24/23 11:05	0.169	0.015	0.017	No	0.1693	No
2/24/23 11:06	0.215	0.013	0.0164	No	0.1723	No
2/24/23 11:07	0.168	0.024	0.0168	No	0.1719	No
2/24/23 11:08	0.183	0.016	0.0166	No	0.1735	No
2/24/23 11:09	0.165	0.016	0.0165	No	0.174	No
2/24/23 11:10	0.173	0.012	0.0156	No	0.1747	No
2/24/23 11:11	0.178	0.015	0.0158	No	0.1757	No
2/24/23 11:12	0.18	0.013	0.0159	No	0.1767	No
2/24/23 11:13	0.17	0.015	0.0159	No	0.1741	No
2/24/23 11:14	0.163	0.015	0.0158	No	0.1741	No
2/24/23 11:15	0.17	0.017	0.0161	No	0.1741	No
2/24/23 11:16	0.188	0.017	0.0155	No	0.1751	No
2/24/23 11:17	0.164	0.016	0.0156	No	0.1755	No
2/24/23 11:18	0.175	0.016	0.0158	No	0.1755	No
2/24/23 11:19	0.166	0.011	0.0154	No	0.1751	No
2/24/23 11:20	0.172	0.012	0.0152	No	0.1753	No
2/24/23 11:21	0.18	0.014	0.0153	No	0.173	No
2/24/23 11:22	0.179	0.012	0.0145	No	0.1737	No
2/24/23 11:23	0.184	0.015	0.0144	No	0.1738	No
2/24/23 11:24	0.175	0.014	0.0143	No	0.1745	No
2/24/23 11:25	0.168	0.012	0.0143	No	0.1741	No
2/24/23 11:26	0.176	0.011	0.014	No	0.174	No
2/24/23 11:27	0.19	0.014	0.0141	No	0.1747	No
2/24/23 11:28	0.187	0.016	0.0141	No	0.1758	No
2/24/23 11:29	0.201	0.021	0.0145	No	0.1783	No
2/24/23 11:30	0.188	0.024	0.015	No	0.1795	No
2/24/23 11:31	0.186	0.016	0.0149	No	0.1794	No
2/24/23 11:32	0.173	0.015	0.0149	No	0.18	No
2/24/23 11:33	0.179	0.013	0.0147	No	0.1803	No
2/24/23 11:34	0.18	0.018	0.0151	No	0.1812	No
2/24/23 11:35	0.171	0.018	0.0155	No	0.1811	No
2/24/23 11:36	0.218	0.013	0.0155	No	0.1837	No
2/24/23 11:37	0.193	0.018	0.0159	No	0.1846	No
2/24/23 11:38	0.173	0.013	0.0157	No	0.1839	No
2/24/23 11:39	0.186	0.013	0.0157	No	0.1846	No
2/24/23 11:40	0.169	0.021	0.0163	No	0.1847	No
2/24/23 11:41	0.175	0.016	0.0166	No	0.1846	No
2/24/23 11:42	0.169	0.02	0.017	No	0.1832	No
2/24/23 11:43	0.189	0.015	0.0169	No	0.1833	No
2/24/23 11:44	0.184	0.018	0.0167	No	0.1822	No
2/24/23 11:45	0.17	0.015	0.0161	No	0.181	No
2/24/23 11:46	0.182	0.014	0.016	No	0.1807	No
2/24/23 11:47	0.195	0.031	0.0171	No	0.1822	No
2/24/23 11:48	0.196	0.029	0.0181	No	0.1833	No
2/24/23 11:49	0.167	0.023	0.0185	No	0.1825	No
2/24/23 11:50	0.169	0.013	0.0181	No	0.1823	No
2/24/23 11:51	0.178	0.014	0.0182	No	0.1797	No
2/24/23 11:52	0.178	0.015	0.018	No	0.1787	No
2/24/23 11:53	0.183	0.019	0.0184	No	0.1793	No

Downwind Station						
Time	Instaneous VOC (ppm)	Instaneous Mass Conc. Total (mg/m ³)	Mass Conc. Total mg/m ³ AVG 15m (mg/m ³)	Dust Exceedance	VOC ppm AVG 15m (ppm)	VOC Exceedance
2/24/23 11:54	0.168	0.023	0.0191	No	0.1781	No
2/24/23 11:55	0.172	0.02	0.019	No	0.1783	No
2/24/23 11:56	0.181	0.013	0.0188	No	0.1787	No
2/24/23 11:57	0.176	0.015	0.0185	No	0.1792	No
2/24/23 11:58	0.204	0.015	0.0185	No	0.1802	No
2/24/23 11:59	0.182	0.019	0.0185	No	0.1801	No
2/24/23 12:00	0.171	0.02	0.0189	No	0.1801	No
2/24/23 12:01	0.188	0.018	0.0191	No	0.1805	No
2/24/23 12:02	0.185	0.016	0.0181	No	0.1799	No
2/24/23 12:03	0.179	0.014	0.0171	No	0.1787	No
2/24/23 12:04	0.195	0.017	0.0167	No	0.1806	No
2/24/23 12:05	0.179	0.023	0.0174	No	0.1813	No
2/24/23 12:06	0.181	0.018	0.0177	No	0.1815	No
2/24/23 12:07	0.175	0.016	0.0177	No	0.1813	No
2/24/23 12:08	0.187	0.02	0.0178	No	0.1815	No
2/24/23 12:09	0.178	0.03	0.0183	No	0.1822	No
2/24/23 12:10	0.187	0.014	0.0179	No	0.1832	No
2/24/23 12:11	0.178	0.017	0.0181	No	0.183	No
2/24/23 12:12	0.184	0.016	0.0182	No	0.1835	No
2/24/23 12:13	0.21	0.017	0.0183	No	0.1839	No
2/24/23 12:14	0.174	0.019	0.0183	No	0.1834	No
2/24/23 12:15	0.202	0.015	0.018	No	0.1855	No
2/24/23 12:16	0.186	0.016	0.0179	No	0.1853	No
2/24/23 12:17	0.184	0.014	0.0177	No	0.1853	No
2/24/23 12:18	0.184	0.017	0.0179	No	0.1856	No
2/24/23 12:19	0.19	0.017	0.0179	No	0.1853	No
2/24/23 12:20	0.198	0.014	0.0173	No	0.1865	No
2/24/23 12:21	0.188	0.016	0.0172	No	0.187	No
2/24/23 12:22	0.222	0.014	0.0171	No	0.1901	No
2/24/23 12:23	0.193	0.014	0.0167	No	0.1905	No
2/24/23 12:24	0.187	0.013	0.0155	No	0.1911	No
2/24/23 12:25	0.192	0.015	0.0156	No	0.1915	No
2/24/23 12:26	0.204	0.016	0.0155	No	0.1932	No
2/24/23 12:27	0.218	0.015	0.0155	No	0.1955	No
2/24/23 12:28	0.195	0.016	0.0154	No	0.1945	No
2/24/23 12:29	0.197	0.017	0.0153	No	0.196	No
2/24/23 12:30	0.194	0.012	0.0151	No	0.1955	No
2/24/23 12:31	0.19	0.01	0.0147	No	0.1957	No
2/24/23 12:32	0.195	0.011	0.0145	No	0.1965	No
2/24/23 12:33	0.185	0.013	0.0142	No	0.1965	No
2/24/23 12:34	0.191	0.014	0.014	No	0.1966	No
2/24/23 12:35	0.191	0.013	0.0139	No	0.1961	No
2/24/23 12:36	0.185	0.015	0.0139	No	0.1959	No
2/24/23 12:37	0.192	0.016	0.014	No	0.1939	No
2/24/23 12:38	0.192	0.016	0.0141	No	0.1939	No
2/24/23 12:39	0.183	0.013	0.0141	No	0.1936	No
2/24/23 12:40	0.184	0.014	0.0141	No	0.1931	No
2/24/23 12:41	0.196	0.014	0.0139	No	0.1925	No
2/24/23 12:42	0.2	0.016	0.014	No	0.1913	No
2/24/23 12:43	0.234	0.021	0.0143	No	0.1939	No
2/24/23 12:44	0.199	0.019	0.0145	No	0.1941	No
2/24/23 12:45	0.182	0.016	0.0147	No	0.1933	No
2/24/23 12:46	0.181	0.01	0.0147	No	0.1927	No
2/24/23 12:47	0.182	0.009	0.0146	No	0.1918	No

Downwind Station						
Time	Instaneous VOC (ppm)	Instaneous Mass Conc. Total (mg/m ³)	Mass Conc. Total mg/m ³ AVG 15m (mg/m ³)	Dust Exceedance	VOC ppm AVG 15m (ppm)	VOC Exceedance
2/24/23 12:48	0.208	0.008	0.0143	No	0.1933	No
2/24/23 12:49	0.185	0.045	0.0163	No	0.1929	No
2/24/23 12:50	0.203	0.011	0.0162	No	0.1937	No
2/24/23 12:51	0.198	0.027	0.017	No	0.1946	No
2/24/23 12:52	0.203	0.026	0.0177	No	0.1953	No
2/24/23 12:53	0.189	0.026	0.0183	No	0.1951	No
2/24/23 12:54	0.188	0.018	0.0187	No	0.1955	No
2/24/23 12:55	0.207	0.03	0.0197	No	0.197	No
2/24/23 12:56	0.213	0.031	0.0209	No	0.1981	No
2/24/23 12:57	0.217	0.023	0.0213	No	0.1993	No
2/24/23 12:58	0.22	0.023	0.0215	No	0.1983	No
2/24/23 12:59	0.209	0.024	0.0218	No	0.199	No
2/24/23 13:00	0.23	0.022	0.0222	No	0.2022	No
2/24/23 13:01	0.201	0.041	0.0243	No	0.2035	No
2/24/23 13:02	0.23	0.021	0.0251	No	0.2067	No
2/24/23 13:03	0.236	0.024	0.0261	No	0.2086	No
2/24/23 13:04	0.203	0.022	0.0246	No	0.2098	No
2/24/23 13:05	0.209	0.024	0.0255	No	0.2102	No
2/24/23 13:06	0.226	0.028	0.0255	No	0.2121	No
2/24/23 13:07	0.224	0.021	0.0252	No	0.2135	No
2/24/23 13:08	0.225	0.021	0.0249	No	0.2159	No
2/24/23 13:09	0.202	0.021	0.0251	No	0.2168	No
2/24/23 13:10	0.201	0.013	0.0239	No	0.2164	No
2/24/23 13:11	0.193	0.012	0.0227	No	0.2151	No
2/24/23 13:12	0.207	0.008	0.0217	No	0.2144	No
2/24/23 13:13	0.191	0.009	0.0207	No	0.2125	No
2/24/23 13:14	0.2	0.016	0.0202	No	0.2119	No
2/24/23 13:15	0.205	0.007	0.0192	No	0.2102	No
2/24/23 13:16	0.202	0.006	0.0169	No	0.2103	No
2/24/23 13:17	0.208	0.003	0.0157	No	0.2088	No
2/24/23 13:18	0.193	0.001	0.0141	No	0.2059	No
2/24/23 13:19	0.211	0.001	0.0127	No	0.2065	No
2/24/23 13:20	0.216	0.001	0.0112	No	0.2069	No
2/24/23 13:21	0.197	0.001	0.0094	No	0.205	No
2/24/23 13:22	0.198	0.005	0.0083	No	0.2033	No
2/24/23 13:23	0.199	-0.001	0.0069	No	0.2015	No
2/24/23 13:24	0.197	-0.003	0.0053	No	0.2012	No
2/24/23 13:25	0.218	0	0.0044	No	0.2023	No
2/24/23 13:26	0.206	-0.003	0.0034	No	0.2032	No
2/24/23 13:27	0.194	-0.001	0.0028	No	0.2023	No
2/24/23 13:28	0.193	-0.002	0.0021	No	0.2025	No
2/24/23 13:29	0.198	0	0.001	No	0.2023	No
2/24/23 13:30	0.201	-0.003	0.0003	No	0.2021	No
2/24/23 13:31	0.192	-0.001	-0.0001	No	0.2014	No
2/24/23 13:32	0.202	-0.004	-0.0006	No	0.201	No
2/24/23 13:33	0.214	-0.003	-0.0009	No	0.2024	No
2/24/23 13:34	0.19	0	-0.0009	No	0.201	No
2/24/23 13:35	0.198	-0.001	-0.0011	No	0.1998	No
2/24/23 13:36	0.187	-0.005	-0.0015	No	0.1991	No
2/24/23 13:37	0.185	-0.006	-0.0022	No	0.1983	No
2/24/23 13:38	0.204	-0.005	-0.0025	No	0.1986	No
2/24/23 13:39	0.212	-0.003	-0.0025	No	0.1996	No
2/24/23 13:40	0.203	-0.004	-0.0027	No	0.1986	No
2/24/23 13:41	0.209	-0.005	-0.0029	No	0.1988	No

Downwind Station						
Time	Instaneous VOC (ppm)	Instaneous Mass Conc. Total (mg/m ³)	Mass Conc. Total mg/m ³ AVG 15m (mg/m ³)	Dust Exceedance	VOC ppm AVG 15m (ppm)	VOC Exceedance
2/24/23 13:42	0.191	-0.006	-0.0032	No	0.1986	No
2/24/23 13:43	0.187	-0.006	-0.0035	No	0.1982	No
2/24/23 13:44	0.193	-0.007	-0.0039	No	0.1979	No
2/24/23 13:45	0.201	0	-0.0037	No	0.1979	No
2/24/23 13:46	0.186	-0.002	-0.0038	No	0.1975	No
2/24/23 13:47	0.19	-0.001	-0.0036	No	0.1967	No
2/24/23 13:48	0.222	-0.001	-0.0035	No	0.1972	No
2/24/23 13:49	0.194	0	-0.0035	No	0.1975	No
2/24/23 13:50	0.2	0	-0.0034	No	0.1976	No
2/24/23 13:51	0.2	0.001	-0.003	No	0.1985	No
2/24/23 13:52	0.226	0.003	-0.0024	No	0.2012	No
2/24/23 13:53	0.207	0.005	-0.0017	No	0.2014	No
2/24/23 13:54	0.193	0.001	-0.0015	No	0.2001	No
2/24/23 13:55	0.189	0	-0.0012	No	0.1992	No
2/24/23 13:56	0.219	0.002	-0.0007	No	0.1999	No
2/24/23 13:57	0.187	0.003	-0.0001	No	0.1996	No
2/24/23 13:58	0.208	0	0.0003	No	0.201	No
2/24/23 13:59	0.195	0.004	0.001	No	0.2011	No
2/24/23 14:00	0.206	0.015	0.002	No	0.2015	No
2/24/23 14:01	0.193	0.01	0.0028	No	0.2019	No
2/24/23 14:02	0.19	0.002	0.003	No	0.2019	No
2/24/23 14:03	0.188	0.001	0.0031	No	0.1997	No
2/24/23 14:04	0.184	-0.001	0.0031	No	0.199	No
2/24/23 14:05	0.204	-0.003	0.0029	No	0.1993	No
2/24/23 14:06	0.2	-0.001	0.0027	No	0.1993	No
2/24/23 14:07	0.209	0	0.0025	No	0.1981	No
2/24/23 14:08	0.233	0.003	0.0024	No	0.1999	No
2/24/23 14:09	0.209	0.005	0.0027	No	0.2009	No
2/24/23 14:10	0.203	0.001	0.0027	No	0.2019	No
2/24/23 14:11	0.202	0.005	0.0029	No	0.2007	No
2/24/23 14:12	0.204	0.002	0.0029	No	0.2019	No
2/24/23 14:13	0.2	0.002	0.003	No	0.2013	No
2/24/23 14:14	0.188	0.002	0.0029	No	0.2009	No
2/24/23 14:15	0.204	-0.004	0.0016	No	0.2007	No
2/24/23 14:16	0.214	0.24	0.0169	No	0.2021	No
2/24/23 14:17	0.202	0.101	0.0235	No	0.2029	No
2/24/23 14:18	0.19	-0.007	0.023	No	0.2031	No
2/24/23 14:19	0.213	-0.011	0.0223	No	0.205	No
2/24/23 14:20	0.197	-0.004	0.0223	No	0.2045	No
2/24/23 14:21	0.197	-0.01	0.0217	No	0.2043	No
2/24/23 14:22	0.199	-0.015	0.0207	No	0.2037	No
2/24/23 14:23	0.187	-0.018	0.0193	No	0.2006	No
2/24/23 14:24	0.191	-0.01	0.0183	No	0.1994	No
2/24/23 14:25	0.213	-0.014	0.0173	No	0.2001	No
2/24/23 14:26	0.198	-0.013	0.0161	No	0.1998	No
2/24/23 14:27	0.218	-0.014	0.015	No	0.2007	No
2/24/23 14:28	0.206	-0.01	0.0142	No	0.2011	No
2/24/23 14:29	0.193	-0.017	0.0129	No	0.2015	No
2/24/23 14:30	0.196	-0.017	0.0121	No	0.2009	No
2/24/23 14:31	0.211	-0.017	-0.0051	No	0.2007	No
2/24/23 14:32	0.2	-0.009	-0.0124	No	0.2006	No
2/24/23 14:33	0.201	-0.013	-0.0128	No	0.2013	No
2/24/23 14:34	0.227	-0.006	-0.0125	No	0.2023	No
2/24/23 14:35	0.217	-0.009	-0.0128	No	0.2036	No

Downwind Station						
Time	Instantaneous VOC (ppm)	Instantaneous Mass Conc. Total (mg/m ³)	Mass Conc. Total mg/m ³ AVG 15m (mg/m ³)	Dust Exceedance	VOC ppm AVG 15m (ppm)	VOC Exceedance
2/24/23 14:36	0.218	-0.007	-0.0126	No	0.205	No
2/24/23 14:37	0.201	-0.011	-0.0123	No	0.2051	No
2/24/23 14:38	0.214	-0.014	-0.0121	No	0.2069	No
2/24/23 14:39	0.204	-0.011	-0.0121	No	0.2078	No
2/24/23 14:40	0.218	-0.011	-0.0119	No	0.2081	No
2/24/23 14:41	0.19	-0.015	-0.0121	No	0.2076	No
2/24/23 14:42	0.196	-0.014	-0.0121	No	0.2061	No
2/24/23 14:43	0.19	-0.014	-0.0123	No	0.2051	No
2/24/23 14:44	0.198	-0.017	-0.0123	No	0.2054	No
2/24/23 14:45	0.204	-0.013	-0.0121	No	0.2059	No
2/24/23 14:46	0.195	-0.012	-0.0117	No	0.2049	No
2/24/23 14:47	0.188	0.197	0.002	No	0.2041	No
2/24/23 14:48	0.192	0.01	0.0035	No	0.2035	No
2/24/23 14:49	0.196	-0.014	0.003	No	0.2014	No
2/24/23 14:50	0.191	-0.019	0.0023	No	0.1997	No
2/24/23 14:51	0.203	-0.008	0.0023	No	0.1987	No
2/24/23 14:52	0.199	-0.015	0.002	No	0.1985	No
2/24/23 14:53	0.191	-0.014	0.002	No	0.197	No
2/24/23 14:54	0.198	-0.018	0.0015	No	0.1966	No
2/24/23 14:55	0.209	-0.015	0.0013	No	0.196	No
2/24/23 14:56	0.19	-0.001	0.0022	No	0.196	No
2/24/23 14:57	0.192	-0.014	0.0022	No	0.1957	No
2/24/23 14:58	0.229	-0.013	0.0023	No	0.1983	No
2/24/23 14:59	0.208	-0.016	0.0023	No	0.199	No
2/24/23 15:00	0.215	-0.013	0.0023	No	0.1997	No
2/24/23 15:01	0.199	-0.013	0.0023	No	0.2	No
2/24/23 15:02	0.193	-0.017	-0.012	No	0.2003	No
2/24/23 15:03	0.2	-0.018	-0.0139	No	0.2009	No
2/24/23 15:04	0.195	-0.013	-0.0138	No	0.2008	No
2/24/23 15:05	0.198	-0.017	-0.0137	No	0.2013	No
2/24/23 15:06	0.218	-0.016	-0.0142	No	0.2023	No
2/24/23 15:07	0.197	-0.018	-0.0144	No	0.2021	No
2/24/23 15:08	0.186	-0.02	-0.0148	No	0.2018	No
2/24/23 15:09	0.197	-0.016	-0.0147	No	0.2017	No
2/24/23 15:10	0.211	-0.014	-0.0146	No	0.2019	No
2/24/23 15:11	0.199	-0.015	-0.0155	No	0.2025	No
2/24/23 15:12	0.188	0.05	-0.0113	No	0.2022	No
2/24/23 15:13	0.185	0.045	-0.0074	No	0.1993	No
2/24/23 15:14	0.188	0.009	-0.0057	No	0.1979	No
2/24/23 15:15	0.192	0.011	-0.0041	No	0.1964	No