



Daily Activity Report

Seton Brilla Charter School
1956 Jerome Avenue, Bronx, NY
BCP No. C203152

General Site Information

Date:	Wednesday, February 15, 2023
Weather:	Partly Cloudy, 49-62°F
Wind Direction/Speed:	SW @ 10-20 mph
AKRF Personnel on Site:	Shannon Donohue
AKRF Equipment on Site:	Mini RAE 3000 Photoionization Detector [(PID) x1], 2 Fixed Air Monitoring Stations [DustTrak
Visitors:	None.

Contractor Information

Contracting Company	Main Personnel	Equipment
Casino Construction	Connor McGrory	Excavator, CFA Drill Rig

Description and Location of Work Activities Performed

- 1) Work continued along the eastern boundary of the site to underpin the adjacent building.
- 2) Equipment was removed from the site along with other general housekeeping

Site Soil Disposal Tracking Information

Destination Facility	Daily Trucks	Total Trucks	Daily Approx. Cubic Yds	Total Approx. Cubic Yds	Total Site Loads	Total Approximate Cubic Yards
Clean Earth Carteret	0	73	0	1,460	163	3,260
Clean Earth Southeastern Pennsylvania	0	64	0	1,280		
Concrete Disposal	0	26	0	520		
N/A	0	0	0	0		
N/A	0	0	0	0		

CAMP Air Monitoring Results

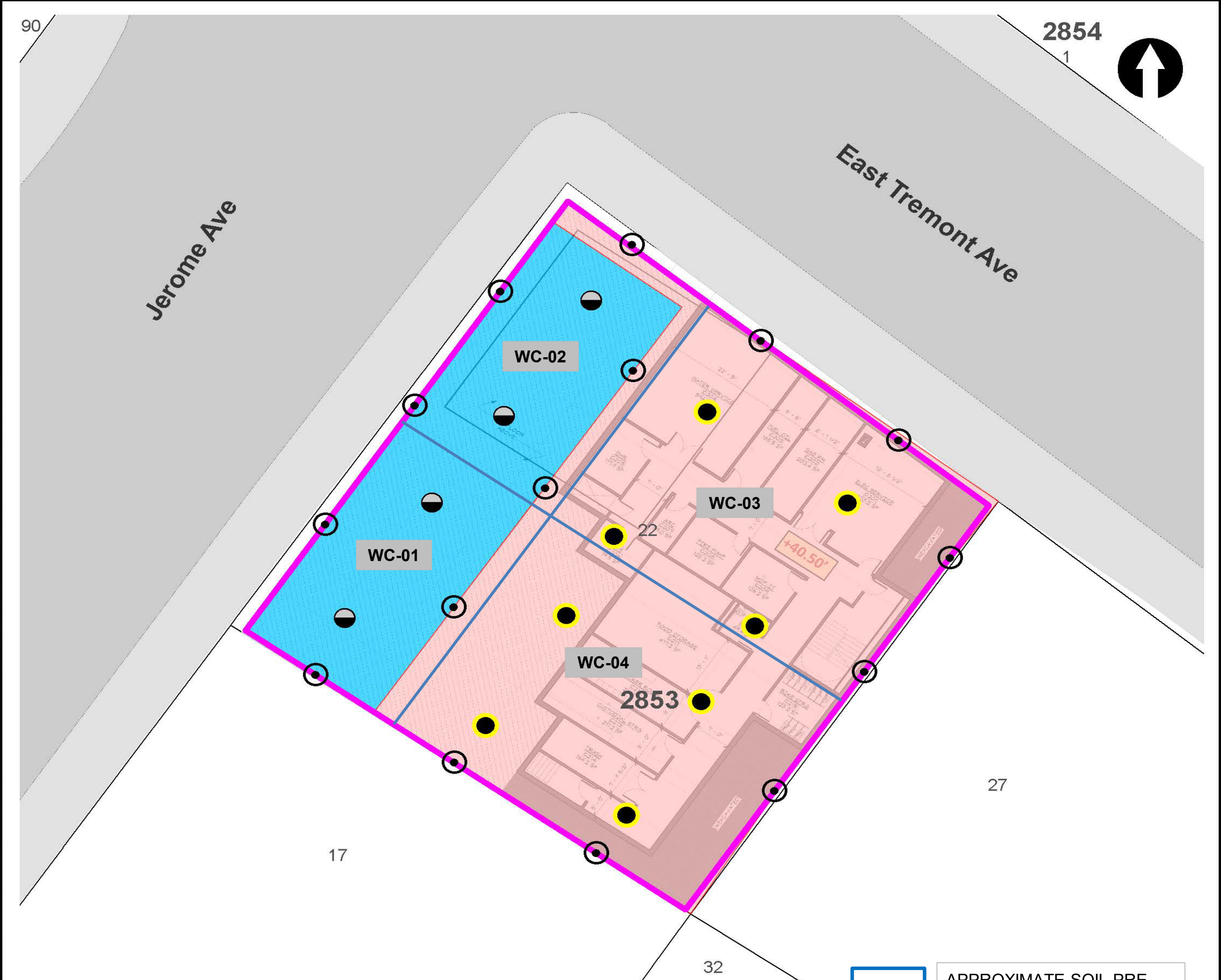
CAMP Station	UPWIND				DOWNWIND		
Odors:	None.				None.		
VOC Action Level Exceedance(s):	None.				None.		
Particulate Action Level Exceedance(s):	None.				None.		
Maximum VOC Level (15 min ppm):	0.356				0.283		
Maximum Particulate Level (15 min mg/m ³):	0.0756				0.094		

Notes: CAMP monitoring was performed throughout the day.

Additional Information

Planned Work Activity for Following Day/Week:	<ol style="list-style-type: none"> 1) Excavation of soil/fill to uncover piles. 2) Installation of underpinnings. 3) Grouting of wall on southeastern boundary of the site
Comments:	None.

Site Map



LEGEND

- PROJECT SITE BOUNDARY
- LOT BOUNDARY AND TAX LOT NUMBER
- 2853** BLOCK NUMBER
- REMEDIAL EXCAVATION TO APPROXIMATELY TWO FEET BELOW EXISTING GRADE
- REMEDIAL EXCAVATION TO GROUNDWATER (SOURCE AREA)

- CONFIRMATION DOCUMENTATION BOTTOM SAMPLE
- SOURCE AREA DOCUMENTATION BOTTOM SAMPLE
- DOCUMENTATION SIDEWALL SAMPLE

NOTE
 REMEDIAL EXCAVATION WILL INCLUDE REMOVAL OF APPROXIMATELY 1,280 TONS (850 CUBIC YARDS) OF SOURCE MATERIAL ASSOCIATED WITH NYSDEC SPILL NO. 2103719 AND APPROXIMATELY 860 TONS (570 CUBIC YARDS) OF SOIL/FILL FROM THE UPPER 2 FEET SITE-WIDE.



APPROXIMATE SOIL PRE-CHARACTERIZATION GRID

Map Source:
 NYCDOP (NYC Dept. of City Planning) GIS database

© 2021 AKRF. W:\Projects\210024 - 1956 JEROME AVENUE\Technical\GIS and Graphics\AR\RAW\210024 Figure 9 Proposed Remedial Excavation and Documentation Sample Location Plan.mxd 10/25/2021 2:03:38 PM iszalus



440 Park Avenue South, New York, NY 10016

1956 Jerome Avenue
 Bronx, New York

**TRACK 4 CLEANUP AND DOCUMENTATION
 SAMPLE LOCATION PLAN**

DATE
04/29/2022

PROJECT NO.
210024

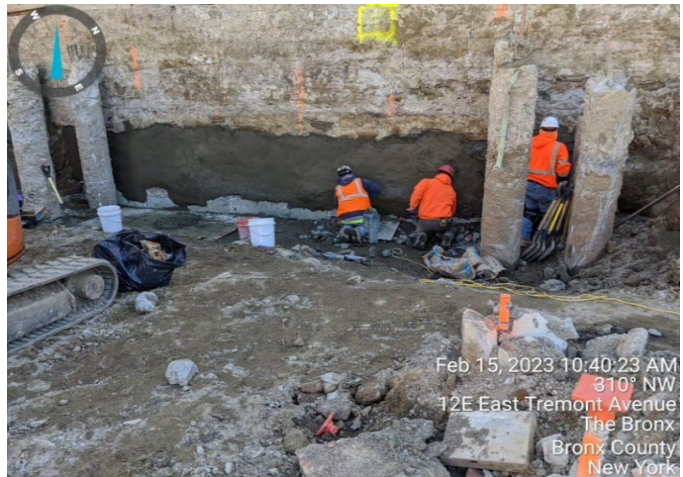
FIGURE
11

Site Photographs

Photograph 1 -
Grading around piles
for surveyor, view
facing northeast.



Photograph 2 -
Underpinning work
in grid WC-03, view
facing northeast.



Photograph 3 - Work
near underpinnings
in Grid WC-03, view
facing southwest.



Upwind Station						
Time	Instaneous VOC (ppm)	Instaneous Mass Conc. Total (mg/m ³)	Mass Conc. Total mg/m ³ AVG 15m (mg/m ³)	Dust Exceedance	VOC ppm AVG 15m (ppm)	VOC Exceedance
2/15/23 7:08	0			No	0	No
2/15/23 7:09	0	0.019	0.019	No	0	No
2/15/23 7:10	0	0.02	0.0195	No	0	No
2/15/23 7:11	0	0.015	0.018	No	0	No
2/15/23 7:12	0	0.014	0.017	No	0	No
2/15/23 7:13	0	0.016	0.0168	No	0	No
2/15/23 7:14	0	0.015	0.0165	No	0	No
2/15/23 7:15	0	0.019	0.0169	No	0	No
2/15/23 7:16	0	0.031	0.0186	No	0	No
2/15/23 7:17	0	0.015	0.0182	No	0	No
2/15/23 7:18	0	0.014	0.0178	No	0	No
2/15/23 7:19	0	0.018	0.0178	No	0	No
2/15/23 7:20	0	0.017	0.0178	No	0	No
2/15/23 7:21	0	0.014	0.0175	No	0	No
2/15/23 7:22	0	0.014	0.0172	No	0	No
2/15/23 7:23	0	0.024	0.0177	No	0	No
2/15/23 7:24	0	0.032	0.0185	No	0	No
2/15/23 7:25	0	0.022	0.0187	No	0	No
2/15/23 7:26	0	0.015	0.0187	No	0	No
2/15/23 7:27	0	0.014	0.0187	No	0	No
2/15/23 7:28	0	0.014	0.0185	No	0	No
2/15/23 7:29	0	0.015	0.0185	No	0	No
2/15/23 7:30	0	0.015	0.0183	No	0	No
2/15/23 7:31	0	0.016	0.0173	No	0	No
2/15/23 7:32	0	0.014	0.0172	No	0	No
2/15/23 7:33	0	0.015	0.0173	No	0	No
2/15/23 7:34	0	0.017	0.0172	No	0	No
2/15/23 7:35	0	0.016	0.0171	No	0	No
2/15/23 7:36	0	0.018	0.0174	No	0	No
2/15/23 7:37	0	0.018	0.0177	No	0	No
2/15/23 7:38	0	0.018	0.0173	No	0	No
2/15/23 7:39	0	0.016	0.0162	No	0	No
2/15/23 7:40	0	0.017	0.0159	No	0	No
2/15/23 7:41	0	0.027	0.0167	No	0	No
2/15/23 7:42	0	0.023	0.0173	No	0	No
2/15/23 7:43	0	0.027	0.0181	No	0	No
2/15/23 7:44	0	0.018	0.0183	No	0	No
2/15/23 7:45	0	0.091	0.0234	No	0	No
2/15/23 7:46	0	0.046	0.0254	No	0	No
2/15/23 7:47	0	0.122	0.0326	No	0	No
2/15/23 7:48	0	0.106	0.0387	No	0	No
2/15/23 7:49	0	0.026	0.0393	No	0	No
2/15/23 7:50	0	0.016	0.0393	No	0	No
2/15/23 7:51	0	0.015	0.0391	No	0	No
2/15/23 7:52	0	0.018	0.0391	No	0	No
2/15/23 7:53	0	0.015	0.0389	No	0	No
2/15/23 7:54	0	0.016	0.0389	No	0	No
2/15/23 7:55	0	0.026	0.0395	No	0	No
2/15/23 7:56	0	0.022	0.0391	No	0	No
2/15/23 7:57	0	0.028	0.0395	No	0	No
2/15/23 7:58	0	0.04	0.0403	No	0	No
2/15/23 7:59	0	0.03	0.0411	No	0	No

Upwind Station						
Time	Instaneous VOC (ppm)	Instaneous Mass Conc. Total (mg/m ³)	Mass Conc. Total mg/m ³ AVG 15m (mg/m ³)	Dust Exceedance	VOC ppm AVG 15m (ppm)	VOC Exceedance
2/15/23 8:00	0	0.022	0.0365	No	0	No
2/15/23 8:01	0	0.023	0.035	No	0	No
2/15/23 8:02	0	0.021	0.0283	No	0	No
2/15/23 8:03	0	0.021	0.0226	No	0	No
2/15/23 8:04	0	0.019	0.0221	No	0	No
2/15/23 8:05	0	0.038	0.0236	No	0	No
2/15/23 8:06	0	0.015	0.0236	No	0	No
2/15/23 8:07	0	0.018	0.0236	No	0	No
2/15/23 8:08	0.002	0.043	0.0255	No	0.0001	No
2/15/23 8:09	0	0.026	0.0261	No	0.0001	No
2/15/23 8:10	0	0.017	0.0255	No	0.0001	No
2/15/23 8:11	0.001	0.014	0.025	No	0.0002	No
2/15/23 8:12	0.009	0.014	0.0241	No	0.0008	No
2/15/23 8:13	0.013	0.014	0.0223	No	0.0017	No
2/15/23 8:14	0.013	0.014	0.0213	No	0.0025	No
2/15/23 8:15	0.014	0.015	0.0208	No	0.0035	No
2/15/23 8:16	0.011	0.015	0.0203	No	0.0042	No
2/15/23 8:17	0.022	0.014	0.0198	No	0.0057	No
2/15/23 8:18	0.02	0.018	0.0196	No	0.007	No
2/15/23 8:19	0.025	0.022	0.0198	No	0.0087	No
2/15/23 8:20	0.021	0.028	0.0191	No	0.0101	No
2/15/23 8:21	0.027	0.022	0.0196	No	0.0119	No
2/15/23 8:22	0.024	0.018	0.0196	No	0.0135	No
2/15/23 8:23	0.033	0.016	0.0178	No	0.0155	No
2/15/23 8:24	0.031	0.016	0.0171	No	0.0176	No
2/15/23 8:25	0.038	0.015	0.017	No	0.0201	No
2/15/23 8:26	0.041	0.015	0.0171	No	0.0228	No
2/15/23 8:27	0.038	0.014	0.0171	No	0.0247	No
2/15/23 8:28	0.043	0.016	0.0172	No	0.0267	No
2/15/23 8:29	0.038	0.026	0.018	No	0.0284	No
2/15/23 8:30	0.037	0.02	0.0183	No	0.0299	No
2/15/23 8:31	0.049	0.015	0.0183	No	0.0325	No
2/15/23 8:32	0.048	0.032	0.0195	No	0.0342	No
2/15/23 8:33	0.05	0.02	0.0197	No	0.0362	No
2/15/23 8:34	0.047	0.016	0.0193	No	0.0377	No
2/15/23 8:35	0.046	0.027	0.0192	No	0.0393	No
2/15/23 8:36	0.054	0.023	0.0193	No	0.0411	No
2/15/23 8:37	0.061	0.017	0.0192	No	0.0436	No
2/15/23 8:38	0.068	0.017	0.0193	No	0.0459	No
2/15/23 8:39	0.065	0.016	0.0193	No	0.0482	No
2/15/23 8:40	0.067	0.017	0.0194	No	0.0501	No
2/15/23 8:41	0.074	0.018	0.0196	No	0.0523	No
2/15/23 8:42	0.067	0.019	0.0199	No	0.0543	No
2/15/23 8:43	0.085	0.014	0.0198	No	0.0571	No
2/15/23 8:44	0.078	0.014	0.019	No	0.0597	No
2/15/23 8:45	0.091	0.014	0.0186	No	0.0633	No
2/15/23 8:46	0.09	0.015	0.0186	No	0.0661	No
2/15/23 8:47	0.086	0.016	0.0175	No	0.0686	No
2/15/23 8:48	0.081	0.018	0.0174	No	0.0707	No
2/15/23 8:49	0.092	0.016	0.0174	No	0.0737	No
2/15/23 8:50	0.096	0.015	0.0166	No	0.077	No
2/15/23 8:51	0.093	0.195	0.0281	No	0.0796	No

Upwind Station						
Time	Instaneous VOC (ppm)	Instaneous Mass Conc. Total (mg/m ³)	Mass Conc. Total mg/m ³ AVG 15m (mg/m ³)	Dust Exceedance	VOC ppm AVG 15m (ppm)	VOC Exceedance
2/15/23 8:52	0.096	0.044	0.0299	No	0.0819	No
2/15/23 8:53	0.091	0.07	0.0334	No	0.0835	No
2/15/23 8:54	0.103	0.016	0.0334	No	0.086	No
2/15/23 8:55	0.1	0.014	0.0332	No	0.0882	No
2/15/23 8:56	0.106	0.015	0.033	No	0.0903	No
2/15/23 8:57	0.112	0.015	0.0327	No	0.0933	No
2/15/23 8:58	0.107	0.016	0.0329	No	0.0948	No
2/15/23 8:59	0.108	0.016	0.033	No	0.0968	No
2/15/23 9:00	0.105	0.03	0.0341	No	0.0977	No
2/15/23 9:01	0.11	0.027	0.0349	No	0.0991	No
2/15/23 9:02	0.128	0.014	0.0347	No	0.1019	No
2/15/23 9:03	0.116	0.017	0.0347	No	0.1042	No
2/15/23 9:04	0.122	0.014	0.0345	No	0.1062	No
2/15/23 9:05	0.12	0.013	0.0344	No	0.1078	No
2/15/23 9:06	0.127	0.015	0.0224	No	0.1101	No
2/15/23 9:07	0.131	0.024	0.0211	No	0.1124	No
2/15/23 9:08	0.129	0.014	0.0173	No	0.1149	No
2/15/23 9:09	0.133	0.022	0.0177	No	0.1169	No
2/15/23 9:10	0.134	0.04	0.0195	No	0.1192	No
2/15/23 9:11	0.137	0.025	0.0201	No	0.1213	No
2/15/23 9:12	0.127	0.018	0.0203	No	0.1223	No
2/15/23 9:13	0.135	0.021	0.0207	No	0.1241	No
2/15/23 9:14	0.131	0.024	0.0212	No	0.1257	No
2/15/23 9:15	0.131	0.037	0.0217	No	0.1274	No
2/15/23 9:16	0.135	0.015	0.0209	No	0.1291	No
2/15/23 9:17	0.133	0.016	0.021	No	0.1294	No
2/15/23 9:18	0.137	0.016	0.0209	No	0.1308	No
2/15/23 9:19	0.152	0.014	0.0209	No	0.1328	No
2/15/23 9:20	0.154	0.023	0.0216	No	0.1351	No
2/15/23 9:21	0.147	0.027	0.0224	No	0.1364	No
2/15/23 9:22	0.145	0.043	0.0237	No	0.1373	No
2/15/23 9:23	0.144	0.509	0.0567	No	0.1383	No
2/15/23 9:24	0.149	0.229	0.0705	No	0.1394	No
2/15/23 9:25	0.155	0.086	0.0735	No	0.1408	No
2/15/23 9:26	0.145	0.027	0.0737	No	0.1413	No
2/15/23 9:27	0.152	0.038	0.075	No	0.143	No
2/15/23 9:28	0.137	0.03	0.0756	No	0.1431	No
2/15/23 9:29	0.144	0.018	0.0752	No	0.144	No
2/15/23 9:30	0.159	0.02	0.0741	No	0.1459	No
2/15/23 9:31	0.144	0.021	0.0745	No	0.1465	No
2/15/23 9:32	0.145	0.019	0.0747	No	0.1473	No
2/15/23 9:33	0.15	0.013	0.0745	No	0.1481	No
2/15/23 9:34	0.155	0.013	0.0744	No	0.1483	No
2/15/23 9:35	0.152	0.015	0.0739	No	0.1482	No
2/15/23 9:36	0.153	0.016	0.0731	No	0.1486	No
2/15/23 9:37	0.159	0.015	0.0713	No	0.1495	No
2/15/23 9:38	0.169	0.015	0.0383	No	0.1512	No
2/15/23 9:39	0.158	0.016	0.0241	No	0.1518	No
2/15/23 9:40	0.164	0.016	0.0195	No	0.1524	No
2/15/23 9:41	0.17	0.017	0.0188	No	0.1541	No
2/15/23 9:42	0.157	0.02	0.0176	No	0.1544	No
2/15/23 9:43	0.164	0.014	0.0165	No	0.1562	No

Upwind Station						
Time	Instaneous VOC (ppm)	Instaneous Mass Conc. Total (mg/m ³)	Mass Conc. Total mg/m ³ AVG 15m (mg/m ³)	Dust Exceedance	VOC ppm AVG 15m (ppm)	VOC Exceedance
2/15/23 9:44	0.153	0.015	0.0163	No	0.1568	No
2/15/23 9:45	0.165	0.017	0.0161	No	0.1572	No
2/15/23 9:46	0.16	0.021	0.0161	No	0.1583	No
2/15/23 9:47	0.162	0.013	0.0157	No	0.1594	No
2/15/23 9:48	0.158	0.02	0.0162	No	0.1599	No
2/15/23 9:49	0.171	0.023	0.0169	No	0.161	No
2/15/23 9:50	0.165	0.282	0.0347	No	0.1619	No
2/15/23 9:51	0.17	0.1	0.0403	No	0.163	No
2/15/23 9:52	0.169	0.028	0.0411	No	0.1637	No
2/15/23 9:53	0.179	0.016	0.0412	No	0.1643	No
2/15/23 9:54	0.18	0.025	0.0418	No	0.1658	No
2/15/23 9:55	0.177	0.014	0.0417	No	0.1667	No
2/15/23 9:56	0.184	0.015	0.0415	No	0.1676	No
2/15/23 9:57	0.176	0.015	0.0412	No	0.1689	No
2/15/23 9:58	0.19	0.014	0.0412	No	0.1706	No
2/15/23 9:59	0.181	0.015	0.0412	No	0.1725	No
2/15/23 10:00	0.178	0.013	0.0409	No	0.1733	No
2/15/23 10:01	0.187	0.013	0.0404	No	0.1751	No
2/15/23 10:02	0.185	0.018	0.0407	No	0.1767	No
2/15/23 10:03	0.19	0.013	0.0403	No	0.1788	No
2/15/23 10:04	0.184	0.012	0.0395	No	0.1797	No
2/15/23 10:05	0.185	0.013	0.0216	No	0.181	No
2/15/23 10:06	0.198	0.015	0.0159	No	0.1829	No
2/15/23 10:07	0.192	0.014	0.015	No	0.1844	No
2/15/23 10:08	0.187	0.014	0.0149	No	0.1849	No
2/15/23 10:09	0.192	0.012	0.014	No	0.1857	No
2/15/23 10:10	0.186	0.016	0.0141	No	0.1863	No
2/15/23 10:11	0.19	0.012	0.0139	No	0.1867	No
2/15/23 10:12	0.195	0.011	0.0137	No	0.188	No
2/15/23 10:13	0.185	0.011	0.0135	No	0.1877	No
2/15/23 10:14	0.199	0.012	0.0133	No	0.1889	No
2/15/23 10:15	0.198	0.014	0.0133	No	0.1902	No
2/15/23 10:16	0.192	0.015	0.0135	No	0.1905	No
2/15/23 10:17	0.198	0.013	0.0131	No	0.1914	No
2/15/23 10:18	0.226	0.013	0.0131	No	0.1938	No
2/15/23 10:19	0.194	0.054	0.0159	No	0.1945	No
2/15/23 10:20	0.207	0.087	0.0209	No	0.1959	No
2/15/23 10:21	0.209	0.024	0.0215	No	0.1967	No
2/15/23 10:22	0.207	0.015	0.0215	No	0.1977	No
2/15/23 10:23	0.211	0.014	0.0215	No	0.1993	No
2/15/23 10:24	0.208	0.014	0.0217	No	0.2003	No
2/15/23 10:25	0.206	0.014	0.0215	No	0.2017	No
2/15/23 10:26	0.201	0.016	0.0218	No	0.2024	No
2/15/23 10:27	0.203	0.016	0.0221	No	0.2029	No
2/15/23 10:28	0.209	0.068	0.0259	No	0.2045	No
2/15/23 10:29	0.212	0.03	0.0271	No	0.2054	No
2/15/23 10:30	0.229	0.016	0.0273	No	0.2075	No
2/15/23 10:31	0.221	0.014	0.0272	No	0.2094	No
2/15/23 10:32	0.212	0.013	0.0272	No	0.2103	No
2/15/23 10:33	0.207	0.013	0.0272	No	0.2091	No
2/15/23 10:34	0.265	0.015	0.0246	No	0.2138	No
2/15/23 10:35	0.261	0.016	0.0199	No	0.2174	No

Upwind Station						
Time	Instaneous VOC (ppm)	Instaneous Mass Conc. Total (mg/m ³)	Mass Conc. Total mg/m ³ AVG 15m (mg/m ³)	Dust Exceedance	VOC ppm AVG 15m (ppm)	VOC Exceedance
2/15/23 10:36	0.266	0.027	0.0201	No	0.2212	No
2/15/23 10:37	0.26	0.014	0.02	No	0.2247	No
2/15/23 10:38	0.243	0.014	0.02	No	0.2269	No
2/15/23 10:39	0.262	0.014	0.02	No	0.2305	No
2/15/23 10:40	0.245	0.015	0.0201	No	0.2331	No
2/15/23 10:41	0.243	0.031	0.0211	No	0.2359	No
2/15/23 10:42	0.262	0.013	0.0209	No	0.2398	No
2/15/23 10:43	0.26	0.013	0.0172	No	0.2432	No
2/15/23 10:44	0.252	0.012	0.016	No	0.2459	No
2/15/23 10:45	0.244	0.017	0.0161	No	0.2469	No
2/15/23 10:46	0.264	0.018	0.0163	No	0.2497	No
2/15/23 10:47	0.254	0.02	0.0168	No	0.2525	No
2/15/23 10:48	0.254	0.015	0.0169	No	0.2557	No
2/15/23 10:49	0.248	0.014	0.0169	No	0.2545	No
2/15/23 10:50	0.25	0.015	0.0168	No	0.2538	No
2/15/23 10:51	0.25	0.024	0.0166	No	0.2527	No
2/15/23 10:52	0.251	0.023	0.0172	No	0.2521	No
2/15/23 10:53	0.257	0.019	0.0175	No	0.2531	No
2/15/23 10:54	0.256	0.022	0.0181	No	0.2527	No
2/15/23 10:55	0.256	0.021	0.0185	No	0.2534	No
2/15/23 10:56	0.262	0.022	0.0179	No	0.2547	No
2/15/23 10:57	0.259	0.019	0.0183	No	0.2545	No
2/15/23 10:58	0.265	0.014	0.0183	No	0.2548	No
2/15/23 10:59	0.261	0.013	0.0184	No	0.2554	No
2/15/23 11:00	0.252	0.014	0.0182	No	0.2559	No
2/15/23 11:01	0.248	0.015	0.018	No	0.2549	No
2/15/23 11:02	0.254	0.018	0.0179	No	0.2549	No
2/15/23 11:03	0.245	0.015	0.0179	No	0.2543	No
2/15/23 11:04	0.265	0.014	0.0179	No	0.2554	No
2/15/23 11:05	0.262	0.018	0.0181	No	0.2562	No
2/15/23 11:06	0.261	0.018	0.0177	No	0.2569	No
2/15/23 11:07	0.258	0.018	0.0173	No	0.2574	No
2/15/23 11:08	0.258	0.021	0.0175	No	0.2575	No
2/15/23 11:09	0.27	0.021	0.0174	No	0.2584	No
2/15/23 11:10	0.263	0.019	0.0173	No	0.2589	No
2/15/23 11:11	0.26	0.02	0.0171	No	0.2587	No
2/15/23 11:12	0.26	0.015	0.0169	No	0.2588	No
2/15/23 11:13	0.252	0.018	0.0171	No	0.2579	No
2/15/23 11:14	0.247	0.029	0.0182	No	0.257	No
2/15/23 11:15	0.244	0.017	0.0184	No	0.2565	No
2/15/23 11:16	0.25	0.012	0.0182	No	0.2566	No
2/15/23 11:17	0.251	0.013	0.0179	No	0.2564	No
2/15/23 11:18	0.248	0.017	0.018	No	0.2566	No
2/15/23 11:19	0.245	0.018	0.0183	No	0.2553	No
2/15/23 11:20	0.246	0.032	0.0192	No	0.2542	No
2/15/23 11:21	0.252	0.018	0.0192	No	0.2536	No
2/15/23 11:22	0.255	0.023	0.0195	No	0.2534	No
2/15/23 11:23	0.251	0.029	0.0201	No	0.2529	No
2/15/23 11:24	0.262	0.014	0.0196	No	0.2524	No
2/15/23 11:25	0.257	0.014	0.0193	No	0.252	No
2/15/23 11:26	0.256	0.014	0.0189	No	0.2517	No
2/15/23 11:27	0.278	0.015	0.0189	No	0.2529	No

Upwind Station

Time	Instaneous VOC (ppm)	Instaneous Mass Conc. Total (mg/m ³)	Mass Conc. Total mg/m ³ AVG 15m (mg/m ³)	Dust Exceedance	VOC ppm AVG 15m (ppm)	VOC Exceedance
2/15/23 11:28	0.256	0.013	0.0185	No	0.2532	No
2/15/23 11:29	0.258	0.011	0.0173	No	0.2539	No
2/15/23 11:30	0.263	0.013	0.0171	No	0.2552	No
2/15/23 11:31	0.264	0.013	0.0171	No	0.2561	No
2/15/23 11:32	0.265	0.012	0.0171	No	0.2571	No
2/15/23 11:33	0.254	0.012	0.0167	No	0.2575	No
2/15/23 11:34	0.253	0.014	0.0165	No	0.258	No
2/15/23 11:35	0.258	0.012	0.0151	No	0.2588	No
2/15/23 11:36	0.267	0.014	0.0149	No	0.2598	No
2/15/23 11:37	0.255	0.029	0.0153	No	0.2598	No
2/15/23 11:38	0.263	0.012	0.0141	No	0.2606	No
2/15/23 11:39	0.258	0.023	0.0147	No	0.2603	No
2/15/23 11:40	0.263	0.013	0.0147	No	0.2607	No
2/15/23 11:41	0.252	0.011	0.0145	No	0.2605	No
2/15/23 11:42	0.263	0.018	0.0147	No	0.2595	No
2/15/23 11:43	0.259	0.015	0.0148	No	0.2597	No
2/15/23 11:44	0.255	0.017	0.0152	No	0.2595	No
2/15/23 11:45	0.271	0.016	0.0154	No	0.26	No
2/15/23 11:46	0.27	0.018	0.0157	No	0.2604	No
2/15/23 11:47	0.273	0.017	0.0161	No	0.2609	No
2/15/23 11:48	0.266	0.015	0.0163	No	0.2617	No
2/15/23 11:49	0.269	0.013	0.0162	No	0.2628	No
2/15/23 11:50	0.269	0.012	0.0162	No	0.2635	No
2/15/23 11:51	0.26	0.016	0.0163	No	0.2631	No
2/15/23 11:52	0.274	0.024	0.016	No	0.2643	No
2/15/23 11:53	0.264	0.019	0.0165	No	0.2644	No
2/15/23 11:54	0.273	0.015	0.0159	No	0.2654	No
2/15/23 11:55	0.273	0.015	0.0161	No	0.2661	No
2/15/23 11:56	0.267	0.014	0.0163	No	0.2671	No
2/15/23 11:57	0.286	0.021	0.0165	No	0.2686	No
2/15/23 11:58	0.278	0.015	0.0165	No	0.2699	No
2/15/23 11:59	0.278	0.014	0.0163	No	0.2714	No
2/15/23 12:00	0.277	0.012	0.016	No	0.2718	No
2/15/23 12:01	0.289	0.015	0.0158	No	0.2731	No
2/15/23 12:02	0.279	0.016	0.0157	No	0.2735	No
2/15/23 12:03	0.279	0.014	0.0157	No	0.2743	No
2/15/23 12:04	0.281	0.013	0.0157	No	0.2751	No
2/15/23 12:05	0.285	0.013	0.0157	No	0.2762	No
2/15/23 12:06	0.282	0.015	0.0157	No	0.2777	No
2/15/23 12:07	0.282	0.013	0.0149	No	0.2782	No
2/15/23 12:08	0.282	0.013	0.0145	No	0.2794	No
2/15/23 12:09	0.285	0.014	0.0145	No	0.2802	No
2/15/23 12:10	0.269	0.019	0.0147	No	0.2799	No
2/15/23 12:11	0.277	0.021	0.0152	No	0.2806	No
2/15/23 12:12	0.281	0.015	0.0148	No	0.2803	No
2/15/23 12:13	0.281	0.013	0.0147	No	0.2805	No
2/15/23 12:14	0.279	0.013	0.0146	No	0.2805	No
2/15/23 12:15	0.281	0.016	0.0149	No	0.2808	No
2/15/23 12:16	0.29	0.017	0.015	No	0.2809	No
2/15/23 12:17	0.281	0.024	0.0155	No	0.281	No
2/15/23 12:18	0.276	0.016	0.0157	No	0.2808	No
2/15/23 12:19	0.289	0.015	0.0158	No	0.2813	No

Upwind Station						
Time	Instaneous VOC (ppm)	Instaneous Mass Conc. Total (mg/m ³)	Mass Conc. Total mg/m ³ AVG 15m (mg/m ³)	Dust Exceedance	VOC ppm AVG 15m (ppm)	VOC Exceedance
2/15/23 12:20	0.287	0.013	0.0158	No	0.2815	No
2/15/23 12:21	0.277	0.014	0.0157	No	0.2811	No
2/15/23 12:22	0.276	0.013	0.0157	No	0.2807	No
2/15/23 12:23	0.276	0.014	0.0158	No	0.2803	No
2/15/23 12:24	0.283	0.014	0.0158	No	0.2802	No
2/15/23 12:25	0.27	0.013	0.0154	No	0.2803	No
2/15/23 12:26	0.266	0.011	0.0147	No	0.2795	No
2/15/23 12:27	0.269	0.014	0.0147	No	0.2787	No
2/15/23 12:28	0.273	0.014	0.0147	No	0.2782	No
2/15/23 12:29	0.273	0.017	0.015	No	0.2778	No
2/15/23 12:30	0.279	0.057	0.0177	No	0.2777	No
2/15/23 12:31	0.28	0.062	0.0207	No	0.277	No
2/15/23 12:32	0.276	0.044	0.0221	No	0.2767	No
2/15/23 12:33	0.27	0.023	0.0225	No	0.2763	No
2/15/23 12:34	0.276	0.021	0.0229	No	0.2754	No
2/15/23 12:35	0.272	0.021	0.0235	No	0.2744	No
2/15/23 12:36	0.277	0.026	0.0243	No	0.2744	No
2/15/23 12:37	0.279	0.023	0.0249	No	0.2746	No
2/15/23 12:38	0.263	0.019	0.0253	No	0.2737	No
2/15/23 12:39	0.261	0.018	0.0255	No	0.2723	No
2/15/23 12:40	0.265	0.017	0.0258	No	0.2719	No
2/15/23 12:41	0.27	0.013	0.0259	No	0.2722	No
2/15/23 12:42	0.267	0.014	0.0259	No	0.2721	No
2/15/23 12:43	0.261	0.011	0.0257	No	0.2713	No
2/15/23 12:44	0.256	0.013	0.0255	No	0.2701	No
2/15/23 12:45	0.262	0.011	0.0224	No	0.269	No
2/15/23 12:46	0.263	0.014	0.0192	No	0.2679	No
2/15/23 12:47	0.266	0.014	0.0172	No	0.2672	No
2/15/23 12:48	0.269	0.014	0.0166	No	0.2671	No
2/15/23 12:49	0.275	0.014	0.0161	No	0.2671	No
2/15/23 12:50	0.28	0.014	0.0157	No	0.2676	No
2/15/23 12:51	0.28	0.019	0.0152	No	0.2678	No
2/15/23 12:52	0.279	0.015	0.0147	No	0.2678	No
2/15/23 12:53	0.271	0.018	0.0146	No	0.2683	No
2/15/23 12:54	0.276	0.015	0.0144	No	0.2693	No
2/15/23 12:55	0.281	0.015	0.0143	No	0.2704	No
2/15/23 12:56	0.315	0.05	0.0167	No	0.2734	No
2/15/23 12:57	0.321	0.017	0.0169	No	0.277	No
2/15/23 12:58	0.347	0.016	0.0173	No	0.2827	No
2/15/23 12:59	0.341	0.016	0.0175	No	0.2884	No
2/15/23 13:00	0.353	0.018	0.0179	No	0.2945	No
2/15/23 13:01	0.349	0.017	0.0181	No	0.3002	No
2/15/23 13:02	0.356	0.014	0.0181	No	0.3062	No
2/15/23 13:03	0.361	0.016	0.0183	No	0.3123	No
2/15/23 13:04	0.36	0.017	0.0185	No	0.318	No
2/15/23 13:05	0.377	0.018	0.0187	No	0.3245	No
2/15/23 13:06	0.352	0.019	0.0187	No	0.3293	No
2/15/23 13:07	0.36	0.016	0.0188	No	0.3347	No
2/15/23 13:08	0.359	0.035	0.0199	No	0.3405	No
2/15/23 13:09	0.368	0.027	0.0207	No	0.3467	No
2/15/23 13:10	0.345	0.016	0.0208	No	0.3509	No
2/15/23 13:11	0.354	0.014	0.0184	No	0.3535	No

Upwind Station						
Time	Instaneous VOC (ppm)	Instaneous Mass Conc. Total (mg/m ³)	Mass Conc. Total mg/m ³ AVG 15m (mg/m ³)	Dust Exceedance	VOC ppm AVG 15m (ppm)	VOC Exceedance
2/15/23 13:12	0.35	0.014	0.0182	No	0.3555	No
2/15/23 13:13	0.346	0.016	0.0182	No	0.3554	No
2/15/23 13:14	0.344	0.015	0.0181	No	0.3556	No
2/15/23 13:15	0.328	0.015	0.0179	No	0.3539	No
2/15/23 13:16	0.331	0.014	0.0177	No	0.3527	No
2/15/23 13:17	0.332	0.013	0.0177	No	0.3511	No
2/15/23 13:18	0.334	0.013	0.0175	No	0.3493	No
2/15/23 13:19	0.32	0.021	0.0177	No	0.3467	No
2/15/23 13:20	0.331	0.015	0.0175	No	0.3436	No
2/15/23 13:21	0.329	0.014	0.0172	No	0.3421	No
2/15/23 13:22	0.331	0.014	0.0171	No	0.3401	No
2/15/23 13:23	0.326	0.015	0.0157	No	0.3379	No
2/15/23 13:24	0.334	0.015	0.0149	No	0.3357	No
2/15/23 13:25	0.328	0.013	0.0147	No	0.3345	No
2/15/23 13:26	0.328	0.014	0.0147	No	0.3328	No
2/15/23 13:27	0.33	0.017	0.0149	No	0.3315	No
2/15/23 13:28	0.32	0.027	0.0157	No	0.3297	No
2/15/23 13:29	0.315	0.034	0.0169	No	0.3278	No
2/15/23 13:30	0.313	0.033	0.0181	No	0.3268	No
2/15/23 13:31	0.298	0.02	0.0185	No	0.3246	No
2/15/23 13:32	0.3	0.014	0.0186	No	0.3225	No
2/15/23 13:33	0.308	0.016	0.0188	No	0.3207	No
2/15/23 13:34	0.297	0.016	0.0185	No	0.3192	No
2/15/23 13:35	0.294	0.014	0.0184	No	0.3167	No
2/15/23 13:36	0.291	0.015	0.0185	No	0.3142	No
2/15/23 13:37	0.306	0.02	0.0189	No	0.3125	No
2/15/23 13:38	0.309	0.026	0.0196	No	0.3114	No
2/15/23 13:39	0.317	0.026	0.0203	No	0.3103	No
2/15/23 13:40	0.314	0.04	0.0221	No	0.3093	No
2/15/23 13:41	0.306	0.021	0.0226	No	0.3079	No
2/15/23 13:42	0.302	0.023	0.023	No	0.306	No
2/15/23 13:43	0.311	0.014	0.0221	No	0.3054	No
2/15/23 13:44	0.303	0.013	0.0207	No	0.3046	No
2/15/23 13:45	0.31	0.015	0.0195	No	0.3044	No
2/15/23 13:46	0.309	0.018	0.0194	No	0.3051	No
2/15/23 13:47	0.314	0.018	0.0197	No	0.3061	No
2/15/23 13:48	0.306	0.017	0.0197	No	0.3059	No
2/15/23 13:49	0.316	0.016	0.0197	No	0.3072	No
2/15/23 13:50	0.313	0.014	0.0197	No	0.3085	No
2/15/23 13:51	0.312	0.016	0.0198	No	0.3099	No
2/15/23 13:52	0.319	0.016	0.0195	No	0.3107	No
2/15/23 13:53	0.31	0.016	0.0189	No	0.3108	No
2/15/23 13:54	0.311	0.015	0.0181	No	0.3104	No
2/15/23 13:55	0.308	0.017	0.0166	No	0.31	No
2/15/23 13:56	0.309	0.015	0.0162	No	0.3102	No
2/15/23 13:57	0.311	0.019	0.0159	No	0.3108	No
2/15/23 13:58	0.309	0.017	0.0161	No	0.3107	No
2/15/23 13:59	0.31	0.016	0.0163	No	0.3111	No
2/15/23 14:00	0.318	0.016	0.0164	No	0.3117	No
2/15/23 14:01	0.313	0.019	0.0165	No	0.3119	No
2/15/23 14:02	0.319	0.018	0.0165	No	0.3123	No
2/15/23 14:03	0.312	0.017	0.0165	No	0.3127	No

Upwind Station						
Time	Instaneous VOC (ppm)	Instaneous Mass Conc. Total (mg/m ³)	Mass Conc. Total mg/m ³ AVG 15m (mg/m ³)	Dust Exceedance	VOC ppm AVG 15m (ppm)	VOC Exceedance
2/15/23 14:04	0.322	0.018	0.0166	No	0.3131	No
2/15/23 14:05	0.312	0.016	0.0167	No	0.313	No
2/15/23 14:06	0.327	0.015	0.0167	No	0.314	No
2/15/23 14:07	0.311	0.015	0.0166	No	0.3135	No
2/15/23 14:08	0.317	0.015	0.0165	No	0.3139	No
2/15/23 14:09	0.31	0.016	0.0166	No	0.3139	No
2/15/23 14:10	0.312	0.014	0.0164	No	0.3141	No
2/15/23 14:11	0.31	0.017	0.0165	No	0.3142	No
2/15/23 14:12	0.312	0.017	0.0164	No	0.3143	No
2/15/23 14:13	0.313	0.015	0.0163	No	0.3145	No
2/15/23 14:14	0.315	0.015	0.0162	No	0.3149	No
2/15/23 14:15	0.32	0.016	0.0162	No	0.315	No
2/15/23 14:16	0.326	0.016	0.016	No	0.3159	No
2/15/23 14:17	0.324	0.016	0.0159	No	0.3162	No
2/15/23 14:18	0.332	0.015	0.0157	No	0.3175	No
2/15/23 14:19	0.331	0.015	0.0155	No	0.3181	No
2/15/23 14:20	0.318	0.015	0.0155	No	0.3185	No
2/15/23 14:21	0.324	0.015	0.0155	No	0.3183	No
2/15/23 14:22	0.323	0.015	0.0155	No	0.3191	No
2/15/23 14:23	0.331	0.017	0.0156	No	0.3201	No
2/15/23 14:24	0.328	0.018	0.0157	No	0.3213	No
2/15/23 14:25	0.329	0.017	0.0159	No	0.3224	No
2/15/23 14:26	0.325	0.063	0.019	No	0.3234	No

Downwind Station						
Time	Instantaneous VOC (ppm)	Instantaneous Mass Conc. Total (mg/m ³)	Mass Conc. Total mg/m ³ AVG 15m (mg/m ³)	Dust Exceedance	VOC ppm AVG 15m (ppm)	VOC Exceedance
2/15/2023 7:09	0			No	0	No
2/15/2023 7:10	0	0.02	0.02	No	0	No
2/15/2023 7:11	0	0.02	0.02	No	0	No
2/15/2023 7:12	0	0.015	0.0183	No	0	No
2/15/2023 7:13	0	0.016	0.0178	No	0	No
2/15/2023 7:14	0	0.015	0.0172	No	0	No
2/15/2023 7:15	0	0.025	0.0185	No	0	No
2/15/2023 7:16	0	0.013	0.0177	No	0	No
2/15/2023 7:17	0	0.015	0.0174	No	0	No
2/15/2023 7:18	0	0.012	0.0168	No	0	No
2/15/2023 7:19	0	0.014	0.0165	No	0	No
2/15/2023 7:20	0	0.013	0.0162	No	0	No
2/15/2023 7:21	0	0.013	0.0159	No	0	No
2/15/2023 7:22	0	0.013	0.0157	No	0	No
2/15/2023 7:23	0	0.017	0.0158	No	0	No
2/15/2023 7:24	0	0.013	0.0156	No	0	No
2/15/2023 7:25	0	0.011	0.015	No	0	No
2/15/2023 7:26	0	0.012	0.0145	No	0	No
2/15/2023 7:27	0.001	0.011	0.0142	No	0.0001	No
2/15/2023 7:28	0.039	0.012	0.0139	No	0.0027	No
2/15/2023 7:29	0.016	0.013	0.0138	No	0.0037	No
2/15/2023 7:30	0.009	0.015	0.0131	No	0.0043	No
2/15/2023 7:31	0.013	0.013	0.0131	No	0.0052	No
2/15/2023 7:32	0.013	0.014	0.0131	No	0.0061	No
2/15/2023 7:33	0.015	0.014	0.0132	No	0.0071	No
2/15/2023 7:34	0.016	0.016	0.0133	No	0.0081	No
2/15/2023 7:35	0.019	0.017	0.0136	No	0.0094	No
2/15/2023 7:36	0.025	0.017	0.0139	No	0.0111	No
2/15/2023 7:37	0.026	0.017	0.0141	No	0.0128	No
2/15/2023 7:38	0.027	0.014	0.0139	No	0.0146	No
2/15/2023 7:39	0.029	0.017	0.0142	No	0.0165	No
2/15/2023 7:40	0.034	0.017	0.0146	No	0.0188	No
2/15/2023 7:41	0.04	0.026	0.0155	No	0.0215	No
2/15/2023 7:42	0.037	0.018	0.016	No	0.0239	No
2/15/2023 7:43	0.031	0.021	0.0166	No	0.0233	No
2/15/2023 7:44	0.039	0.071	0.0205	No	0.0249	No
2/15/2023 7:45	0.041	0.025	0.0211	No	0.027	No
2/15/2023 7:46	0.044	0.039	0.0229	No	0.0291	No
2/15/2023 7:47	0.054	0.029	0.0239	No	0.0318	No
2/15/2023 7:48	0.046	0.032	0.0251	No	0.0339	No
2/15/2023 7:49	0.058	0.023	0.0255	No	0.0367	No
2/15/2023 7:50	0.061	0.021	0.0258	No	0.0395	No
2/15/2023 7:51	1.326	0.032	0.0268	No	0.1262	No
2/15/2023 7:52	0.161	0.019	0.0269	No	0.1352	No
2/15/2023 7:53	0.664	0.02	0.0273	No	0.1777	No
2/15/2023 7:54	0.222	0.021	0.0276	No	0.1905	No
2/15/2023 7:55	0.222	0.063	0.0307	No	0.2031	No
2/15/2023 7:56	0.225	0.029	0.0309	No	0.2154	No
2/15/2023 7:57	0.258	0.029	0.0316	No	0.2301	No
2/15/2023 7:58	0.173	0.024	0.0318	No	0.2396	No
2/15/2023 7:59	0.129	0.029	0.029	No	0.2456	No
2/15/2023 8:00	0.125	0.11	0.0347	No	0.2512	No
2/15/2023 8:01	0.115	0.026	0.0338	No	0.2559	No
2/15/2023 8:02	0.164	0.021	0.0333	No	0.2633	No

Downwind Station						
Time	Instaneous VOC (ppm)	Instaneous Mass Conc. Total (mg/m ³)	Mass Conc. Total mg/m ³ AVG 15m (mg/m ³)	Dust Exceedance	VOC ppm AVG 15m (ppm)	VOC Exceedance
2/15/2023 8:03	0.148	0.02	0.0325	No	0.2701	No
2/15/2023 8:04	0.172	0.022	0.0324	No	0.2777	No
2/15/2023 8:05	0.14	0.02	0.0323	No	0.2829	No
2/15/2023 8:06	0.138	0.022	0.0317	No	0.2037	No
2/15/2023 8:07	0.173	0.02	0.0317	No	0.2045	No
2/15/2023 8:08	0.115	0.023	0.0319	No	0.1679	No
2/15/2023 8:09	0.136	0.021	0.0319	No	0.1622	No
2/15/2023 8:10	0.114	0.018	0.0289	No	0.155	No
2/15/2023 8:11	0.119	0.018	0.0282	No	0.1479	No
2/15/2023 8:12	0.119	0.02	0.0276	No	0.1387	No
2/15/2023 8:13	0.128	0.019	0.0273	No	0.1357	No
2/15/2023 8:14	0.165	0.019	0.0266	No	0.1381	No
2/15/2023 8:15	0.116	0.021	0.0207	No	0.1375	No
2/15/2023 8:16	0.123	0.019	0.0202	No	0.138	No
2/15/2023 8:17	0.149	0.02	0.0201	No	0.137	No
2/15/2023 8:18	0.146	0.025	0.0205	No	0.1369	No
2/15/2023 8:19	0.221	0.027	0.0208	No	0.1401	No
2/15/2023 8:20	0.136	0.028	0.0213	No	0.1399	No
2/15/2023 8:21	0.127	0.025	0.0215	No	0.1391	No
2/15/2023 8:22	0.13	0.021	0.0216	No	0.1363	No
2/15/2023 8:23	0.137	0.021	0.0215	No	0.1377	No
2/15/2023 8:24	0.133	0.021	0.0215	No	0.1375	No
2/15/2023 8:25	0.136	0.019	0.0215	No	0.139	No
2/15/2023 8:26	0.136	0.019	0.0216	No	0.1401	No
2/15/2023 8:27	0.136	0.019	0.0215	No	0.1413	No
2/15/2023 8:28	0.144	0.02	0.0216	No	0.1423	No
2/15/2023 8:29	0.143	0.023	0.0219	No	0.1409	No
2/15/2023 8:30	0.155	0.019	0.0217	No	0.1435	No
2/15/2023 8:31	0.141	0.021	0.0219	No	0.1447	No
2/15/2023 8:32	0.147	0.02	0.0219	No	0.1445	No
2/15/2023 8:33	0.138	0.019	0.0215	No	0.144	No
2/15/2023 8:34	0.145	0.022	0.0211	No	0.1389	No
2/15/2023 8:35	0.146	0.049	0.0225	No	0.1396	No
2/15/2023 8:36	0.142	0.021	0.0223	No	0.1406	No
2/15/2023 8:37	0.167	0.022	0.0223	No	0.1431	No
2/15/2023 8:38	0.176	0.019	0.0222	No	0.1457	No
2/15/2023 8:39	0.157	0.02	0.0221	No	0.1473	No
2/15/2023 8:40	0.18	0.019	0.0221	No	0.1502	No
2/15/2023 8:41	0.211	0.022	0.0223	No	0.1552	No
2/15/2023 8:42	0.181	0.02	0.0224	No	0.1582	No
2/15/2023 8:43	0.161	0.018	0.0223	No	0.1593	No
2/15/2023 8:44	0.168	0.018	0.0219	No	0.161	No
2/15/2023 8:45	0.166	0.019	0.0219	No	0.1617	No
2/15/2023 8:46	0.187	0.022	0.022	No	0.1648	No
2/15/2023 8:47	0.174	0.021	0.0221	No	0.1666	No
2/15/2023 8:48	0.211	0.027	0.0226	No	0.1715	No
2/15/2023 8:49	0.268	0.021	0.0225	No	0.1797	No
2/15/2023 8:50	0.193	0.02	0.0206	No	0.1828	No
2/15/2023 8:51	0.176	0.034	0.0215	No	0.1851	No
2/15/2023 8:52	0.184	0.023	0.0215	No	0.1862	No
2/15/2023 8:53	0.194	0.021	0.0217	No	0.1874	No
2/15/2023 8:54	0.195	0.019	0.0216	No	0.1899	No
2/15/2023 8:55	0.202	0.02	0.0217	No	0.1914	No
2/15/2023 8:56	0.179	0.041	0.0229	No	0.1893	No

Downwind Station						
Time	Instaneous VOC (ppm)	Instaneous Mass Conc. Total (mg/m ³)	Mass Conc. Total mg/m ³ AVG 15m (mg/m ³)	Dust Exceedance	VOC ppm AVG 15m (ppm)	VOC Exceedance
2/15/2023 8:57	0.185	0.019	0.0229	No	0.1895	No
2/15/2023 8:58	0.196	0.019	0.0229	No	0.1919	No
2/15/2023 8:59	0.204	0.022	0.0232	No	0.1943	No
2/15/2023 9:00	0.185	0.118	0.0298	No	0.1955	No
2/15/2023 9:01	0.186	0.022	0.0298	No	0.1955	No
2/15/2023 9:02	0.185	0.018	0.0296	No	0.1962	No
2/15/2023 9:03	0.2	0.019	0.0291	No	0.1955	No
2/15/2023 9:04	0.186	0.024	0.0293	No	0.19	No
2/15/2023 9:05	0.193	0.02	0.0293	No	0.19	No
2/15/2023 9:06	0.193	0.019	0.0283	No	0.1911	No
2/15/2023 9:07	0.186	0.022	0.0282	No	0.1913	No
2/15/2023 9:08	0.202	0.021	0.0282	No	0.1918	No
2/15/2023 9:09	0.204	0.101	0.0337	No	0.1924	No
2/15/2023 9:10	0.19	0.045	0.0353	No	0.1916	No
2/15/2023 9:11	0.197	0.023	0.0341	No	0.1928	No
2/15/2023 9:12	0.178	0.02	0.0342	No	0.1923	No
2/15/2023 9:13	0.198	0.02	0.0343	No	0.1925	No
2/15/2023 9:14	0.206	0.049	0.0361	No	0.1926	No
2/15/2023 9:15	0.194	0.05	0.0315	No	0.1932	No
2/15/2023 9:16	0.203	0.018	0.0313	No	0.1943	No
2/15/2023 9:17	0.225	0.019	0.0313	No	0.197	No
2/15/2023 9:18	0.2	0.019	0.0313	No	0.197	No
2/15/2023 9:19	0.233	0.017	0.0309	No	0.2001	No
2/15/2023 9:20	0.226	0.02	0.0309	No	0.2023	No
2/15/2023 9:21	0.239	0.094	0.0359	No	0.2054	No
2/15/2023 9:22	0.216	0.047	0.0375	No	0.2074	No
2/15/2023 9:23	0.209	0.064	0.0404	No	0.2079	No
2/15/2023 9:24	0.209	0.111	0.0411	No	0.2082	No
2/15/2023 9:25	0.208	0.025	0.0397	No	0.2094	No
2/15/2023 9:26	0.214	0.029	0.0401	No	0.2105	No
2/15/2023 9:27	0.201	0.05	0.0421	No	0.2121	No
2/15/2023 9:28	0.218	0.033	0.043	No	0.2134	No
2/15/2023 9:29	0.244	0.019	0.041	No	0.2159	No
2/15/2023 9:30	0.219	0.027	0.0395	No	0.2176	No
2/15/2023 9:31	0.208	0.02	0.0396	No	0.2179	No
2/15/2023 9:32	0.201	0.022	0.0398	No	0.2163	No
2/15/2023 9:33	0.211	0.019	0.0398	No	0.2171	No
2/15/2023 9:34	0.21	0.022	0.0401	No	0.2155	No
2/15/2023 9:35	0.211	0.02	0.0401	No	0.2145	No
2/15/2023 9:36	0.216	0.023	0.0354	No	0.213	No
2/15/2023 9:37	0.239	0.021	0.0337	No	0.2145	No
2/15/2023 9:38	0.208	0.021	0.0308	No	0.2145	No
2/15/2023 9:39	0.208	0.021	0.0248	No	0.2144	No
2/15/2023 9:40	0.206	0.023	0.0247	No	0.2143	No
2/15/2023 9:41	0.225	0.025	0.0244	No	0.215	No
2/15/2023 9:42	0.212	0.031	0.0231	No	0.2157	No
2/15/2023 9:43	0.225	0.024	0.0225	No	0.2162	No
2/15/2023 9:44	0.221	0.022	0.0227	No	0.2147	No
2/15/2023 9:45	0.22	0.021	0.0223	No	0.2147	No
2/15/2023 9:46	0.212	0.022	0.0225	No	0.215	No
2/15/2023 9:47	0.217	0.009	0.0216	No	0.2161	No
2/15/2023 9:48	0.218	0.009	0.0209	No	0.2165	No
2/15/2023 9:49	0.216	0.013	0.0203	No	0.2169	No
2/15/2023 9:50	0.229	0.028	0.0209	No	0.2181	No

Downwind Station						
Time	Instaneous VOC (ppm)	Instaneous Mass Conc. Total (mg/m ³)	Mass Conc. Total mg/m ³ AVG 15m (mg/m ³)	Dust Exceedance	VOC ppm AVG 15m (ppm)	VOC Exceedance
2/15/2023 9:51	0.205	0.018	0.0205	No	0.2174	No
2/15/2023 9:52	0.217	0.012	0.0199	No	0.2159	No
2/15/2023 9:53	0.211	0.008	0.0191	No	0.2161	No
2/15/2023 9:54	0.234	0.007	0.0181	No	0.2179	No
2/15/2023 9:55	0.305	0.006	0.017	No	0.2245	No
2/15/2023 9:56	0.221	0.007	0.0158	No	0.2242	No
2/15/2023 9:57	0.228	0.008	0.0143	No	0.2253	No
2/15/2023 9:58	0.219	0.006	0.0131	No	0.2249	No
2/15/2023 9:59	0.207	0.007	0.0121	No	0.2239	No
2/15/2023 10:00	0.21	0.007	0.0111	No	0.2233	No
2/15/2023 10:01	0.207	0.007	0.0101	No	0.2229	No
2/15/2023 10:02	0.213	0.008	0.0101	No	0.2227	No
2/15/2023 10:03	0.266	0.01	0.0101	No	0.2259	No
2/15/2023 10:04	0.236	0.009	0.0099	No	0.2272	No
2/15/2023 10:05	0.227	0.019	0.0093	No	0.2271	No
2/15/2023 10:06	0.243	0.008	0.0086	No	0.2296	No
2/15/2023 10:07	0.227	0.009	0.0084	No	0.2303	No
2/15/2023 10:08	0.215	0.016	0.0089	No	0.2305	No
2/15/2023 10:09	0.242	0.197	0.0216	No	0.2311	No
2/15/2023 10:10	0.225	0.007	0.0217	No	0.2257	No
2/15/2023 10:11	0.216	0.007	0.0217	No	0.2254	No
2/15/2023 10:12	0.228	0.004	0.0214	No	0.2254	No
2/15/2023 10:13	0.235	0.005	0.0213	No	0.2265	No
2/15/2023 10:14	0.219	0.005	0.0212	No	0.2273	No
2/15/2023 10:15	0.221	0.017	0.0219	No	0.228	No
2/15/2023 10:16	0.22	0.007	0.0219	No	0.2289	No
2/15/2023 10:17	0.219	0.013	0.0222	No	0.2293	No
2/15/2023 10:18	0.222	0.003	0.0217	No	0.2263	No
2/15/2023 10:19	0.216	0.011	0.0219	No	0.225	No
2/15/2023 10:20	0.228	0.047	0.0237	No	0.2251	No
2/15/2023 10:21	0.22	0.006	0.0236	No	0.2235	No
2/15/2023 10:22	0.216	0.005	0.0233	No	0.2228	No
2/15/2023 10:23	0.22	0.004	0.0225	No	0.2231	No
2/15/2023 10:24	0.22	0.006	0.0098	No	0.2217	No
2/15/2023 10:25	0.212	0.005	0.0097	No	0.2208	No
2/15/2023 10:26	0.219	0.017	0.0103	No	0.221	No
2/15/2023 10:27	0.223	0.012	0.0109	No	0.2207	No
2/15/2023 10:28	0.209	0.005	0.0109	No	0.2189	No
2/15/2023 10:29	0.219	0.003	0.0107	No	0.2189	No
2/15/2023 10:30	0.216	0.009	0.0102	No	0.2186	No
2/15/2023 10:31	0.241	0.023	0.0113	No	0.22	No
2/15/2023 10:32	0.215	0.003	0.0106	No	0.2197	No
2/15/2023 10:33	0.224	0.005	0.0107	No	0.2199	No
2/15/2023 10:34	0.228	0.003	0.0102	No	0.2207	No
2/15/2023 10:35	0.216	0.003	0.0073	No	0.2199	No
2/15/2023 10:36	0.239	0.002	0.007	No	0.2211	No
2/15/2023 10:37	0.248	0.003	0.0069	No	0.2233	No
2/15/2023 10:38	0.228	0.002	0.0067	No	0.2238	No
2/15/2023 10:39	0.226	0.004	0.0066	No	0.2242	No
2/15/2023 10:40	0.219	0.005	0.0066	No	0.2247	No
2/15/2023 10:41	0.224	0.004	0.0057	No	0.225	No
2/15/2023 10:42	0.232	0.002	0.0051	No	0.2256	No
2/15/2023 10:43	0.219	0.001	0.0048	No	0.2263	No
2/15/2023 10:44	0.238	0.003	0.0048	No	0.2275	No

Downwind Station						
Time	Instaneous VOC (ppm)	Instaneous Mass Conc. Total (mg/m ³)	Mass Conc. Total mg/m ³ AVG 15m (mg/m ³)	Dust Exceedance	VOC ppm AVG 15m (ppm)	VOC Exceedance
2/15/2023 10:45	0.216	0.013	0.0051	No	0.2275	No
2/15/2023 10:46	0.215	0.061	0.0076	No	0.2258	No
2/15/2023 10:47	0.224	0.006	0.0078	No	0.2264	No
2/15/2023 10:48	0.22	0.002	0.0076	No	0.2261	No
2/15/2023 10:49	0.221	0.009	0.008	No	0.2257	No
2/15/2023 10:50	0.223	0.002	0.0079	No	0.2261	No
2/15/2023 10:51	0.224	0.003	0.008	No	0.2251	No
2/15/2023 10:52	0.246	0.002	0.0079	No	0.225	No
2/15/2023 10:53	0.235	0.002	0.0079	No	0.2255	No
2/15/2023 10:54	0.235	0.002	0.0078	No	0.2261	No
2/15/2023 10:55	0.249	0.002	0.0076	No	0.2281	No
2/15/2023 10:56	0.233	0.004	0.0076	No	0.2287	No
2/15/2023 10:57	0.222	0.003	0.0077	No	0.228	No
2/15/2023 10:58	0.227	0.001	0.0077	No	0.2285	No
2/15/2023 10:59	0.229	0	0.0075	No	0.2279	No
2/15/2023 11:00	0.232	0	0.0066	No	0.229	No
2/15/2023 11:01	0.227	0	0.0025	No	0.2298	No
2/15/2023 11:02	0.245	0.001	0.0022	No	0.2312	No
2/15/2023 11:03	0.243	0.003	0.0023	No	0.2327	No
2/15/2023 11:04	0.228	0.001	0.0017	No	0.2332	No
2/15/2023 11:05	0.24	0.001	0.0017	No	0.2343	No
2/15/2023 11:06	0.232	0.002	0.0016	No	0.2349	No
2/15/2023 11:07	0.242	0.002	0.0016	No	0.2346	No
2/15/2023 11:08	0.27	0.004	0.0017	No	0.2369	No
2/15/2023 11:09	0.236	0.001	0.0017	No	0.237	No
2/15/2023 11:10	0.225	0.002	0.0017	No	0.2354	No
2/15/2023 11:11	0.234	0.002	0.0015	No	0.2355	No
2/15/2023 11:12	0.225	0.001	0.0014	No	0.2357	No
2/15/2023 11:13	0.24	0.007	0.0018	No	0.2365	No
2/15/2023 11:14	0.223	0.004	0.0021	No	0.2361	No
2/15/2023 11:15	0.216	0	0.0021	No	0.2351	No
2/15/2023 11:16	0.256	0	0.0021	No	0.237	No
2/15/2023 11:17	0.217	0.001	0.0021	No	0.2351	No
2/15/2023 11:18	0.228	0.056	0.0056	No	0.2341	No
2/15/2023 11:19	0.217	0.177	0.0173	No	0.2334	No
2/15/2023 11:20	0.203	0.046	0.0203	No	0.2309	No
2/15/2023 11:21	0.198	0.658	0.0641	No	0.2287	No
2/15/2023 11:22	0.196	0.02	0.0653	No	0.2256	No
2/15/2023 11:23	0.207	0.29	0.0843	No	0.2214	No
2/15/2023 11:24	0.2	0.016	0.0853	No	0.219	No
2/15/2023 11:25	0.217	0.017	0.0863	No	0.2185	No
2/15/2023 11:26	0.21	0.017	0.0873	No	0.2169	No
2/15/2023 11:27	0.235	0.031	0.0893	No	0.2175	No
2/15/2023 11:28	0.226	0.015	0.0899	No	0.2166	No
2/15/2023 11:29	0.214	0.018	0.0908	No	0.216	No
2/15/2023 11:30	0.222	0.016	0.0919	No	0.2164	No
2/15/2023 11:31	0.22	0.013	0.0927	No	0.214	No
2/15/2023 11:32	0.218	0.012	0.0935	No	0.2141	No
2/15/2023 11:33	0.213	0.012	0.0905	No	0.2131	No
2/15/2023 11:34	0.207	0.013	0.0796	No	0.2124	No
2/15/2023 11:35	0.211	0.011	0.0773	No	0.2129	No
2/15/2023 11:36	0.221	0.013	0.0343	No	0.2145	No
2/15/2023 11:37	0.216	0.011	0.0337	No	0.2158	No
2/15/2023 11:38	0.215	0.009	0.0149	No	0.2163	No

Downwind Station						
Time	Instaneous VOC (ppm)	Instaneous Mass Conc. Total (mg/m ³)	Mass Conc. Total mg/m ³ AVG 15m (mg/m ³)	Dust Exceedance	VOC ppm AVG 15m (ppm)	VOC Exceedance
2/15/2023 11:39	0.217	0.024	0.0155	No	0.2175	No
2/15/2023 11:40	0.222	0.011	0.0151	No	0.2178	No
2/15/2023 11:41	0.217	0.006	0.0143	No	0.2183	No
2/15/2023 11:42	0.225	0.013	0.0131	No	0.2176	No
2/15/2023 11:43	0.244	0.012	0.0129	No	0.2188	No
2/15/2023 11:44	0.234	0.012	0.0125	No	0.2201	No
2/15/2023 11:45	0.241	0.007	0.0119	No	0.2214	No
2/15/2023 11:46	0.225	0.007	0.0115	No	0.2217	No
2/15/2023 11:47	0.233	0.007	0.0112	No	0.2227	No
2/15/2023 11:48	0.23	0.007	0.0109	No	0.2239	No
2/15/2023 11:49	0.228	0.008	0.0105	No	0.2253	No
2/15/2023 11:50	0.26	0.007	0.0103	No	0.2285	No
2/15/2023 11:51	0.237	0.019	0.0107	No	0.2296	No
2/15/2023 11:52	0.243	0.023	0.0115	No	0.2314	No
2/15/2023 11:53	0.236	0.029	0.0128	No	0.2328	No
2/15/2023 11:54	0.225	0.008	0.0117	No	0.2333	No
2/15/2023 11:55	0.223	0.008	0.0115	No	0.2334	No
2/15/2023 11:56	0.22	0.011	0.0119	No	0.2336	No
2/15/2023 11:57	0.235	0.007	0.0115	No	0.2343	No
2/15/2023 11:58	0.24	0.006	0.0111	No	0.234	No
2/15/2023 11:59	0.231	0.006	0.0107	No	0.2338	No
2/15/2023 12:00	0.225	0.007	0.0107	No	0.2327	No
2/15/2023 12:01	0.224	0.009	0.0108	No	0.2327	No
2/15/2023 12:02	0.226	0.007	0.0108	No	0.2322	No
2/15/2023 12:03	0.263	0.005	0.0107	No	0.2344	No
2/15/2023 12:04	0.23	0.005	0.0105	No	0.2345	No
2/15/2023 12:05	0.222	0.007	0.0105	No	0.232	No
2/15/2023 12:06	0.218	0.004	0.0095	No	0.2307	No
2/15/2023 12:07	0.214	0.004	0.0082	No	0.2288	No
2/15/2023 12:08	0.219	0.004	0.0065	No	0.2277	No
2/15/2023 12:09	0.211	0.006	0.0064	No	0.2267	No
2/15/2023 12:10	0.216	0.011	0.0066	No	0.2263	No
2/15/2023 12:11	0.268	0.01	0.0065	No	0.2295	No
2/15/2023 12:12	0.231	0.004	0.0063	No	0.2292	No
2/15/2023 12:13	0.215	0.001	0.006	No	0.2275	No
2/15/2023 12:14	0.234	0.002	0.0057	No	0.2277	No
2/15/2023 12:15	0.228	0.001	0.0053	No	0.2279	No
2/15/2023 12:16	0.219	0.003	0.0049	No	0.2276	No
2/15/2023 12:17	0.221	0.004	0.0047	No	0.2273	No
2/15/2023 12:18	0.24	0.001	0.0045	No	0.2257	No
2/15/2023 12:19	0.231	0.001	0.0042	No	0.2258	No
2/15/2023 12:20	0.219	0.004	0.004	No	0.2256	No
2/15/2023 12:21	0.223	0.004	0.004	No	0.2259	No
2/15/2023 12:22	0.217	0.001	0.0038	No	0.2261	No
2/15/2023 12:23	0.222	0	0.0035	No	0.2263	No
2/15/2023 12:24	0.209	0.002	0.0033	No	0.2262	No
2/15/2023 12:25	0.21	0	0.0025	No	0.2258	No
2/15/2023 12:26	0.207	0.002	0.002	No	0.2217	No
2/15/2023 12:27	0.203	0.003	0.0019	No	0.2199	No
2/15/2023 12:28	0.209	0.001	0.0019	No	0.2195	No
2/15/2023 12:29	0.205	0.015	0.0028	No	0.2175	No
2/15/2023 12:30	0.199	0.038	0.0053	No	0.2156	No
2/15/2023 12:31	0.216	0.023	0.0066	No	0.2154	No
2/15/2023 12:32	0.203	0.036	0.0087	No	0.2142	No

Downwind Station						
Time	Instaneous VOC (ppm)	Instaneous Mass Conc. Total (mg/m ³)	Mass Conc. Total mg/m ³ AVG 15m (mg/m ³)	Dust Exceedance	VOC ppm AVG 15m (ppm)	VOC Exceedance
2/15/2023 12:33	0.2	0.011	0.0094	No	0.2115	No
2/15/2023 12:34	0.196	0.005	0.0097	No	0.2092	No
2/15/2023 12:35	0.197	0.005	0.0097	No	0.2077	No
2/15/2023 12:36	0.201	0.018	0.0107	No	0.2063	No
2/15/2023 12:37	0.21	0.011	0.0113	No	0.2058	No
2/15/2023 12:38	0.202	0.005	0.0117	No	0.2045	No
2/15/2023 12:39	0.196	0.017	0.0127	No	0.2036	No
2/15/2023 12:40	0.196	0.002	0.0128	No	0.2027	No
2/15/2023 12:41	0.195	0.001	0.0127	No	0.2019	No
2/15/2023 12:42	0.189	0	0.0125	No	0.2009	No
2/15/2023 12:43	0.195	-0.001	0.0124	No	0.2	No
2/15/2023 12:44	0.191	0.028	0.0133	No	0.1991	No
2/15/2023 12:45	0.194	0	0.0107	No	0.1987	No
2/15/2023 12:46	0.197	0.001	0.0093	No	0.1975	No
2/15/2023 12:47	0.203	0	0.0069	No	0.1975	No
2/15/2023 12:48	0.199	0	0.0061	No	0.1974	No
2/15/2023 12:49	0.2	0	0.0058	No	0.1977	No
2/15/2023 12:50	0.199	0	0.0055	No	0.1978	No
2/15/2023 12:51	0.198	0.011	0.005	No	0.1976	No
2/15/2023 12:52	0.202	0.003	0.0045	No	0.1971	No
2/15/2023 12:53	0.204	0.005	0.0045	No	0.1972	No
2/15/2023 12:54	0.22	0.001	0.0034	No	0.1988	No
2/15/2023 12:55	0.207	0.001	0.0033	No	0.1995	No
2/15/2023 12:56	0.204	0	0.0033	No	0.2001	No
2/15/2023 12:57	0.216	0.002	0.0034	No	0.2019	No
2/15/2023 12:58	0.22	0.003	0.0037	No	0.2036	No
2/15/2023 12:59	0.207	0.003	0.002	No	0.2047	No
2/15/2023 13:00	0.207	0.002	0.0021	No	0.2055	No
2/15/2023 13:01	0.205	0.013	0.0029	No	0.2061	No
2/15/2023 13:02	0.205	0.002	0.0031	No	0.2062	No
2/15/2023 13:03	0.209	0.001	0.0031	No	0.2069	No
2/15/2023 13:04	0.23	0.001	0.0032	No	0.2089	No
2/15/2023 13:05	0.218	0.002	0.0033	No	0.2101	No
2/15/2023 13:06	0.217	0.001	0.0027	No	0.2114	No
2/15/2023 13:07	0.205	0.002	0.0026	No	0.2116	No
2/15/2023 13:08	0.196	0.006	0.0027	No	0.2111	No
2/15/2023 13:09	0.196	0.005	0.0029	No	0.2095	No
2/15/2023 13:10	0.194	0.002	0.003	No	0.2086	No
2/15/2023 13:11	0.198	0	0.003	No	0.2082	No
2/15/2023 13:12	0.196	0.003	0.0031	No	0.2069	No
2/15/2023 13:13	0.191	0.007	0.0033	No	0.2049	No
2/15/2023 13:14	0.19	0.001	0.0032	No	0.2038	No
2/15/2023 13:15	0.192	0.007	0.0035	No	0.2028	No
2/15/2023 13:16	0.187	0.001	0.0027	No	0.2016	No
2/15/2023 13:17	0.196	0.001	0.0027	No	0.201	No
2/15/2023 13:18	0.195	0	0.0026	No	0.2001	No
2/15/2023 13:19	0.195	0.031	0.0046	No	0.1977	No
2/15/2023 13:20	0.213	0.002	0.0046	No	0.1974	No
2/15/2023 13:21	0.205	0.002	0.0047	No	0.1966	No
2/15/2023 13:22	0.193	0.001	0.0046	No	0.1958	No
2/15/2023 13:23	0.2	0.002	0.0043	No	0.1961	No
2/15/2023 13:24	0.213	0.002	0.0041	No	0.1972	No
2/15/2023 13:25	0.195	0.001	0.0041	No	0.1973	No
2/15/2023 13:26	0.205	0.002	0.0042	No	0.1977	No

Downwind Station						
Time	Instaneous VOC (ppm)	Instaneous Mass Conc. Total (mg/m ³)	Mass Conc. Total mg/m ³ AVG 15m (mg/m ³)	Dust Exceedance	VOC ppm AVG 15m (ppm)	VOC Exceedance
2/15/2023 13:27	0.2	0.015	0.005	No	0.198	No
2/15/2023 13:28	0.211	0.026	0.0063	No	0.1993	No
2/15/2023 13:29	0.199	0.056	0.0099	No	0.1999	No
2/15/2023 13:30	0.205	0.021	0.0109	No	0.2008	No
2/15/2023 13:31	0.196	0.004	0.0111	No	0.2014	No
2/15/2023 13:32	0.216	0.014	0.0119	No	0.2027	No
2/15/2023 13:33	0.22	0.004	0.0122	No	0.2044	No
2/15/2023 13:34	0.299	0.003	0.0103	No	0.2113	No
2/15/2023 13:35	0.213	0.002	0.0103	No	0.2113	No
2/15/2023 13:36	0.214	0.017	0.0113	No	0.2119	No
2/15/2023 13:37	0.232	0.012	0.0121	No	0.2145	No
2/15/2023 13:38	0.248	0.013	0.0128	No	0.2177	No
2/15/2023 13:39	0.22	0.015	0.0137	No	0.2182	No
2/15/2023 13:40	0.225	0.019	0.0149	No	0.2202	No
2/15/2023 13:41	0.237	0.005	0.0151	No	0.2223	No
2/15/2023 13:42	0.204	0.011	0.0148	No	0.2226	No
2/15/2023 13:43	0.204	0.002	0.0132	No	0.2221	No
2/15/2023 13:44	0.207	0	0.0095	No	0.2227	No
2/15/2023 13:45	0.223	0.001	0.0081	No	0.2239	No
2/15/2023 13:46	0.23	0.002	0.008	No	0.2261	No
2/15/2023 13:47	0.213	0.001	0.0071	No	0.2259	No
2/15/2023 13:48	0.198	0.005	0.0072	No	0.2245	No
2/15/2023 13:49	0.251	0.001	0.0071	No	0.2213	No
2/15/2023 13:50	0.207	0.001	0.007	No	0.2209	No
2/15/2023 13:51	0.21	0.003	0.0061	No	0.2206	No
2/15/2023 13:52	0.214	0.002	0.0054	No	0.2194	No
2/15/2023 13:53	0.204	0.002	0.0047	No	0.2165	No
2/15/2023 13:54	0.216	0.001	0.0037	No	0.2162	No
2/15/2023 13:55	0.231	0.003	0.0027	No	0.2166	No
2/15/2023 13:56	0.212	0.003	0.0025	No	0.2149	No
2/15/2023 13:57	0.219	0.001	0.0019	No	0.2159	No
2/15/2023 13:58	0.226	0.001	0.0018	No	0.2174	No
2/15/2023 13:59	0.241	0.001	0.0019	No	0.2197	No
2/15/2023 14:00	0.233	0.002	0.0019	No	0.2203	No
2/15/2023 14:01	0.227	0.004	0.0021	No	0.2201	No
2/15/2023 14:02	0.213	0.002	0.0021	No	0.2201	No
2/15/2023 14:03	0.218	0.003	0.002	No	0.2215	No
2/15/2023 14:04	0.208	0	0.0019	No	0.2186	No
2/15/2023 14:05	0.204	0	0.0019	No	0.2184	No
2/15/2023 14:06	0.204	0	0.0017	No	0.218	No
2/15/2023 14:07	0.206	0	0.0015	No	0.2175	No
2/15/2023 14:08	0.264	0.001	0.0015	No	0.2215	No
2/15/2023 14:09	0.212	0	0.0014	No	0.2212	No
2/15/2023 14:10	0.214	0	0.0012	No	0.2201	No
2/15/2023 14:11	0.224	0	0.001	No	0.2209	No
2/15/2023 14:12	0.213	0.002	0.0011	No	0.2205	No

Downwind Station						
Time	Instantaneous VOC (ppm)	Instantaneous Mass Conc. Total (mg/m ³)	Mass Conc. Total mg/m ³ AVG 15m (mg/m ³)	Dust Exceedance	VOC ppm AVG 15m (ppm)	VOC Exceedance
2/15/2023 14:13	0.224	0	0.001	No	0.2203	No
2/15/2023 14:14	0.226	0	0.0009	No	0.2193	No
2/15/2023 14:15	0.215	0.001	0.0009	No	0.2181	No
2/15/2023 14:16	0.227	0	0.0006	No	0.2181	No
2/15/2023 14:17	0.225	0.001	0.0005	No	0.2189	No
2/15/2023 14:18	0.227	0.001	0.0004	No	0.2195	No
2/15/2023 14:19	0.21	0	0.0004	No	0.2197	No
2/15/2023 14:20	0.209	0	0.0004	No	0.22	No
2/15/2023 14:21	0.229	0	0.0004	No	0.2217	No
2/15/2023 14:22	0.248	0.008	0.0009	No	0.2245	No
2/15/2023 14:23	0.212	0.007	0.0013	No	0.221	No
2/15/2023 14:24	0.206	0.002	0.0015	No	0.2206	No
2/15/2023 14:25	0.211	0.001	0.0015	No	0.2204	No
2/15/2023 14:26	0.224	0.011	0.0023	No	0.2204	No
2/15/2023 14:27	0.209	0.005	0.0025	No	0.2201	No
2/15/2023 14:28	0.219	0.012	0.0033	No	0.2198	No