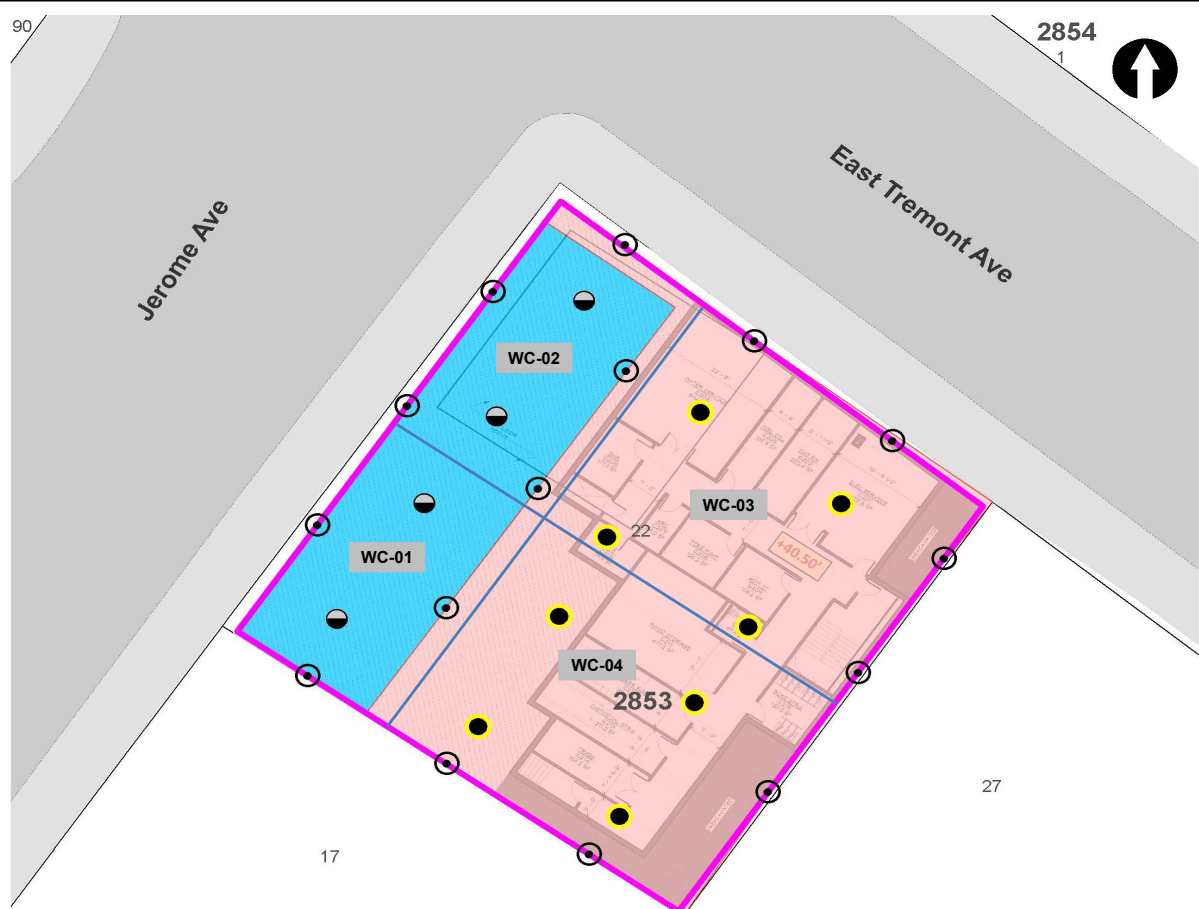
	<b>Daily Activity Report</b>					
	Seton Brilla Charter School					
	1956 Jerome Avenue, Bronx, NY					
	BCP No. C203152					
<b>General Site Information</b>						
Date:	Friday, February 10, 2023					
Weather:	Partly Cloudy, 52-55°F					
Wind Direction/Speed:	W@ 15-25 mph					
AKRF Personnel on Site:	Shannon Donohue					
AKRF Equipment on Site:	Mini RAE 3000 Photoionization Detector [(PID) x1], 2 Fixed Air Monitoring Stations [DustTrak					
Visitors:	None.					
<b>Contractor Information</b>						
<b>Contracting Company</b>		<b>Main Personnel</b>			<b>Equipment</b>	
Casino Construction		Connor McGrory			Excavator, CFA Drill Rig	
<b>Description and Location of Work Activities Performed</b>						
1) Excavation in grids WC-03 and WC-04 to uncover piles as part of pile cap construction.						
2) Work continued along the eastern boundary of the site to underpin the adjacent building.						
<b>Site Soil Disposal Tracking Information</b>						
<b>Destination Facility</b>	<b>Daily Trucks</b>	<b>Total Trucks</b>	<b>Daily Approx. Cubic Yds</b>	<b>Total Approx. Cubic Yds</b>	<b>Total Site Loads</b>	<b>Total Approximate Cubic Yards</b>
Clean Earth Carteret	0	73	0	1,460	163	3,260
Clean Earth Southeastern Pennsylvania	0	64	0	1,280		
Concrete Disposal	0	26	0	520		
N/A	0	0	0	0		
N/A	0	0	0	0		
<b>CAMP Air Monitoring Results</b>						
<b>CAMP Station</b>	<b>UPWIND</b>			<b>DOWNWIND</b>		
Odors:	None.				None.	
VOC Action Level Exceedance(s):	None.				None.	
Particulate Action Level Exceedance(s):	None.				Yes.	13:23-13:30
Maximum VOC Level (15 min ppm):	0.495				1.203	
Maximum Particulate Level (15 min mg/m <sup>3</sup> ):	0.0435				0.212	
Notes: CAMP monitoring was performed throughout the day. Dust exceedance at the downwind station from 13:23-13:30 was due to street sweeping near to the station, and not soil disturbance activities. Concentrations returned to background levels once the street sweeper was gone.						
<b>Additional Information</b>						
Planned Work Activity for Following Day/Week:	1) Excavation of soil/fill to uncover piles. 2) Installation of underpinnings.					
Comments:	None.					

Site Map



**LEGEND**

- PROJECT SITE BOUNDARY
- LOT BOUNDARY AND TAX LOT NUMBER
- 2853** BLOCK NUMBER
- REMEDIAL EXCAVATION TO APPROXIMATELY TWO FEET BELOW EXISTING GRADE
- REMEDIAL EXCAVATION TO GROUNDWATER (SOURCE AREA)

- CONFIRMATION DOCUMENTATION BOTTOM SAMPLE
- SOURCE AREA DOCUMENTATION BOTTOM SAMPLE
- DOCUMENTATION SIDEWALL SAMPLE

APPROXIMATE SOIL PRE-CHARACTERIZATION GRID

**NOTE**  
 REMEDIAL EXCAVATION WILL INCLUDE REMOVAL OF APPROXIMATELY 1,280 TONS (850 CUBIC YARDS) OF SOURCE MATERIAL ASSOCIATED WITH NYSDEC SPILL NO. 2103719 AND APPROXIMATELY 860 TONS (570 CUBIC YARDS) OF SOIL/FILL FROM THE UPPER 2 FEET SITE-WIDE.



Map Source:  
 NYCDCP (NYC Dept. of City Planning) GIS database

© 2024 AKRF. W:\Projects\10024 - 1956 JEROME AVENUE\Technical\GIS and Graphics\AR\PA\1956 Jerome Remedial Excavation and Documentation Sample Location Plan.mxd 10/25/2024 2:08:38 PM iszallis



440 Park Avenue South, New York, NY 10016

**1956 Jerome Avenue**  
 Bronx, New York

**TRACK 4 CLEANUP AND DOCUMENTATION  
 SAMPLE LOCATION PLAN**

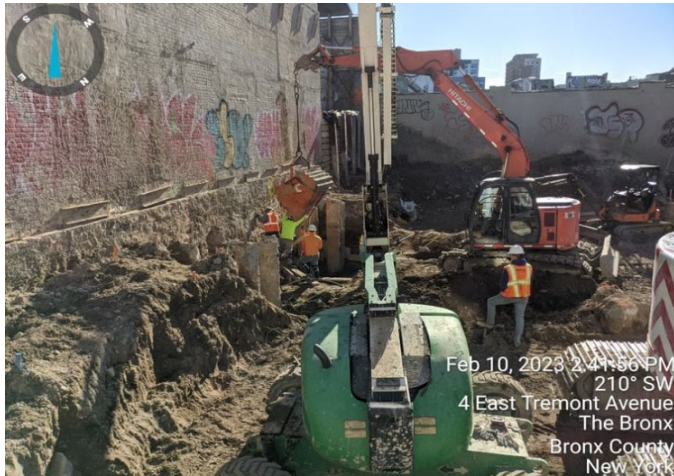
DATE	<b>04/29/2022</b>
PROJECT NO.	<b>210024</b>
FIGURE	<b>11</b>

Site Photographs

Photograph 1 -  
Grading soil in grid  
WC-02, view facing  
east.



Photograph 2 -  
Concrete pour for  
underpinning in grid  
WC-03, view facing  
southwest.



Photograph 3 -  
Installation of  
underpinnings in  
Grid WC-03, view  
facing south.



## Upwind Station

Time	Instantaneous VOC (ppm)	Instantaneous Mass Conc. Total (mg/m <sup>3</sup> )	Mass Conc. Total mg/m <sup>3</sup> AVG 15m (mg/m <sup>3</sup> )	Dust Exceedance	VOC ppm AVG 15m (ppm)	VOC Exceedance
2/10/23 7:04		0.029	0.029	No		No
2/10/23 7:05		0.03	0.0295	No		No
2/10/23 7:06		0.032	0.0303	No		No
2/10/23 7:08		0.027	0.0295	No		No
2/10/23 7:09		0.031	0.0298	No		No
2/10/23 7:10		0.033	0.0303	No		No
2/10/23 7:14	0.378	0.039	0.0316	No	0	No
2/10/23 7:15	0.274	0.067	0.036	No	0.001	No
2/10/23 7:16	0.207	0.038	0.0362	No	0.002	No
2/10/23 7:17	0.226	0.04	0.0366	No	0.002	No
2/10/23 7:18	0.16	0.032	0.0362	No	0.003	No
2/10/23 7:19	0.141	0.034	0.0366	No	0.003	No
2/10/23 7:20	0.111	0.051	0.0385	No	0.003	No
2/10/23 7:21	0.101	0.044	0.0396	No	0.004	No
2/10/23 7:22	0.104	0.035	0.0393	No	0.004	No
2/10/23 7:23	0.103	0.035	0.0399	No	0.004	No
2/10/23 7:24	0.068	0.032	0.04	No	0.004	No
2/10/23 7:25	0.085	0.036	0.0403	No	0.004	No
2/10/23 7:26	0.08	0.035	0.0398	No	0.004	No
2/10/23 7:27	0.077	0.032	0.0393	No	0.005	No
2/10/23 7:28	0.063	0.03	0.0387	No	0.005	No
2/10/23 7:29	0.071	0.029	0.038	No	0.005	No
2/10/23 7:30	0.073	0.033	0.0357	No	0.005	No
2/10/23 7:31	0.065	0.031	0.0353	No	0.005	No
2/10/23 7:32	0.068	0.03	0.0346	No	0.005	No
2/10/23 7:33	0.075	0.031	0.0345	No	0.006	No
2/10/23 7:34	0.084	0.031	0.0343	No	0.006	No
2/10/23 7:35	0.085	0.033	0.0331	No	0.006	No
2/10/23 7:36	0.078	0.031	0.0323	No	0.006	No
2/10/23 7:37	0.078	0.029	0.0319	No	0.006	No
2/10/23 7:38	0.081	0.029	0.0315	No	0.006	No
2/10/23 7:39	0.083	0.03	0.0313	No	0.007	No
2/10/23 7:40	0.09	0.03	0.0309	No	0.007	No
2/10/23 7:41	0.111	0.028	0.0305	No	0.007	No
2/10/23 7:42	0.102	0.028	0.0302	No	0.007	No
2/10/23 7:43	0.104	0.028	0.0301	No	0.007	No
2/10/23 7:44	0.098	0.027	0.0299	No	0.008	No
2/10/23 7:45	0.106	0.028	0.0296	No	0.008	No
2/10/23 7:46	0.115	0.029	0.0295	No	0.008	No
2/10/23 7:47	0.115	0.029	0.0294	No	0.008	No
2/10/23 7:48	0.108	0.029	0.0293	No	0.008	No
2/10/23 7:49	0.125	0.03	0.0292	No	0.009	No
2/10/23 7:50	0.122	0.032	0.0291	No	0.009	No
2/10/23 7:51	0.139	0.034	0.0293	No	0.009	No
2/10/23 7:52	0.144	0.035	0.0297	No	0.009	No
2/10/23 7:53	0.138	0.041	0.0305	No	0.01	No
2/10/23 7:54	0.136	0.041	0.0313	No	0.01	No
2/10/23 7:55	0.155	0.04	0.0319	No	0.01	No
2/10/23 7:56	0.165	0.037	0.0325	No	0.011	No
2/10/23 7:57	0.179	0.034	0.0329	No	0.011	No
2/10/23 7:58	0.182	0.035	0.0334	No	0.011	No
2/10/23 7:59	0.218	0.032	0.0337	No	0.012	No

## Upwind Station

Time	Instantaneous VOC (ppm)	Instantaneous Mass Conc. Total (mg/m <sup>3</sup> )	Mass Conc. Total mg/m <sup>3</sup> AVG 15m (mg/m <sup>3</sup> )	Dust Exceedance	VOC ppm AVG 15m (ppm)	VOC Exceedance
2/10/23 8:00	0.188	0.034	0.0341	No	0.012	No
2/10/23 8:01	0.178	0.032	0.0343	No	0.013	No
2/10/23 8:02	0.172	0.024	0.034	No	0.013	No
2/10/23 8:03	0.165	0.023	0.0336	No	0.013	No
2/10/23 8:04	0.178	0.02	0.0329	No	0.014	No
2/10/23 8:05	0.181	0.021	0.0322	No	0.014	No
2/10/23 8:06	0.17	0.021	0.0313	No	0.014	No
2/10/23 8:07	0.18	0.023	0.0305	No	0.015	No
2/10/23 8:08	0.181	0.027	0.0296	No	0.015	No
2/10/23 8:09	0.171	0.022	0.0283	No	0.015	No
2/10/23 8:10	0.183	0.019	0.0269	No	0.016	No
2/10/23 8:11	0.186	0.02	0.0258	No	0.016	No
2/10/23 8:12	0.185	0.017	0.0247	No	0.017	No
2/10/23 8:13	0.198	0.02	0.0237	No	0.017	No
2/10/23 8:14	0.188	0.017	0.0227	No	0.017	No
2/10/23 8:15	0.19	0.017	0.0215	No	0.018	No
2/10/23 8:16	0.191	0.015	0.0204	No	0.018	No
2/10/23 8:17	0.205	0.021	0.0202	No	0.019	No
2/10/23 8:18	0.212	0.025	0.0203	No	0.019	No
2/10/23 8:19	0.197	0.021	0.0204	No	0.019	No
2/10/23 8:20	0.205	0.013	0.0199	No	0.02	No
2/10/23 8:21	0.21	0.015	0.0195	No	0.02	No
2/10/23 8:22	0.211	0.013	0.0188	No	0.021	No
2/10/23 8:23	0.217	0.012	0.0178	No	0.021	No
2/10/23 8:24	0.218	0.011	0.0171	No	0.022	No
2/10/23 8:25	0.227	0.012	0.0166	No	0.022	No
2/10/23 8:26	0.251	0.015	0.0163	No	0.023	No
2/10/23 8:27	0.26	0.016	0.0162	No	0.023	No
2/10/23 8:28	0.276	0.012	0.0157	No	0.024	No
2/10/23 8:29	0.279	0.012	0.0153	No	0.024	No
2/10/23 8:30	0.277	0.011	0.0149	No	0.025	No
2/10/23 8:31	0.281	0.011	0.0147	No	0.025	No
2/10/23 8:32	0.283	0.011	0.014	No	0.026	No
2/10/23 8:33	0.285	0.011	0.0131	No	0.027	No
2/10/23 8:34	0.298	0.012	0.0125	No	0.027	No
2/10/23 8:35	0.289	0.013	0.0125	No	0.028	No
2/10/23 8:36	0.325	0.013	0.0123	No	0.028	No
2/10/23 8:37	0.311	0.012	0.0123	No	0.029	No
2/10/23 8:38	0.313	0.011	0.0122	No	0.03	No
2/10/23 8:39	0.31	0.011	0.0122	No	0.03	No
2/10/23 8:40	0.299	0.011	0.0121	No	0.031	No
2/10/23 8:41	0.312	0.011	0.0119	No	0.032	No
2/10/23 8:42	0.316	0.01	0.0115	No	0.032	No
2/10/23 8:43	0.349	0.011	0.0114	No	0.033	No
2/10/23 8:44	0.358	0.013	0.0115	No	0.034	No
2/10/23 8:45	0.354	0.013	0.0116	No	0.034	No
2/10/23 8:46	0.399	0.014	0.0118	No	0.035	No
2/10/23 8:47	0.38	0.013	0.0119	No	0.036	No
2/10/23 8:48	0.391	0.012	0.012	No	0.037	No
2/10/23 8:49	0.387	0.011	0.0119	No	0.038	No
2/10/23 8:50	0.387	0.012	0.0119	No	0.038	No
2/10/23 8:51	0.389	0.009	0.0116	No	0.039	No

## Upwind Station

Time	Instantaneous VOC (ppm)	Instantaneous Mass Conc. Total (mg/m <sup>3</sup> )	Mass Conc. Total mg/m <sup>3</sup> AVG 15m (mg/m <sup>3</sup> )	Dust Exceedance	VOC ppm AVG 15m (ppm)	VOC Exceedance
2/10/23 8:52	0.38	0.009	0.0114	No	0.04	No
2/10/23 8:53	0.382	0.009	0.0113	No	0.041	No
2/10/23 8:54	0.389	0.009	0.0111	No	0.042	No
2/10/23 8:55	0.397	0.011	0.0111	No	0.042	No
2/10/23 8:56	0.395	0.012	0.0112	No	0.043	No
2/10/23 8:57	0.396	0.011	0.0113	No	0.044	No
2/10/23 8:58	0.401	0.009	0.0111	No	0.045	No
2/10/23 8:59	0.416	0.011	0.011	No	0.046	No
2/10/23 9:00	0.425	0.012	0.0109	No	0.047	No
2/10/23 9:01	0.426	0.01	0.0107	No	0.047	No
2/10/23 9:02	0.414	0.007	0.0103	No	0.048	No
2/10/23 9:03	0.433	0.008	0.01	No	0.049	No
2/10/23 9:04	0.429	0.012	0.0101	No	0.05	No
2/10/23 9:05	0.44	0.012	0.0101	No	0.051	No
2/10/23 9:06	0.445	0.009	0.0101	No	0.052	No
2/10/23 9:07	0.445	0.009	0.0101	No	0.053	No
2/10/23 9:08	0.445	0.008	0.01	No	0.054	No
2/10/23 9:09	0.453	0.009	0.01	No	0.055	No
2/10/23 9:10	0.448	0.011	0.01	No	0.056	No
2/10/23 9:11	0.452	0.009	0.0098	No	0.057	No
2/10/23 9:12	0.457	0.007	0.0095	No	0.058	No
2/10/23 9:13	0.454	0.01	0.0096	No	0.058	No
2/10/23 9:14	0.465	0.008	0.0094	No	0.059	No
2/10/23 9:15	0.47	0.012	0.0094	No	0.06	No
2/10/23 9:16	0.466	0.009	0.0093	No	0.061	No
2/10/23 9:17	0.462	0.007	0.0093	No	0.062	No
2/10/23 9:18	0.459	0.008	0.0093	No	0.063	No
2/10/23 9:19	0.471	0.007	0.009	No	0.064	No
2/10/23 9:20	0.474	0.008	0.0087	No	0.065	No
2/10/23 9:21	0.465	0.01	0.0088	No	0.066	No
2/10/23 9:22	0.449	0.008	0.0087	No	0.067	No
2/10/23 9:23	0.451	0.007	0.0087	No	0.068	No
2/10/23 9:24	0.457	0.007	0.0085	No	0.069	No
2/10/23 9:25	0.451	0.007	0.0083	No	0.07	No
2/10/23 9:26	0.448	0.023	0.0092	No	0.071	No
2/10/23 9:27	0.445	0.017	0.0099	No	0.072	No
2/10/23 9:28	0.442	0.041	0.0119	No	0.073	No
2/10/23 9:29	0.449	0.011	0.0121	No	0.074	No
2/10/23 9:30	0.434	0.018	0.0125	No	0.075	No
2/10/23 9:31	0.435	0.012	0.0127	No	0.076	No
2/10/23 9:32	0.434	0.01	0.0129	No	0.077	No
2/10/23 9:33	0.423	0.012	0.0132	No	0.077	No
2/10/23 9:34	0.413	0.008	0.0133	No	0.078	No
2/10/23 9:35	0.427	0.006	0.0131	No	0.079	No
2/10/23 9:36	0.445	0.007	0.0129	No	0.08	No
2/10/23 9:37	0.439	0.007	0.0129	No	0.081	No
2/10/23 9:38	0.435	0.008	0.0129	No	0.082	No
2/10/23 9:39	0.452	0.009	0.0131	No	0.083	No
2/10/23 9:40	0.433	0.012	0.0134	No	0.084	No
2/10/23 9:41	0.426	0.009	0.0125	No	0.085	No
2/10/23 9:42	0.431	0.015	0.0123	No	0.085	No
2/10/23 9:43	0.41	0.017	0.0107	No	0.086	No

## Upwind Station

Time	Instantaneous VOC (ppm)	Instantaneous Mass Conc. Total (mg/m <sup>3</sup> )	Mass Conc. Total mg/m <sup>3</sup> AVG 15m (mg/m <sup>3</sup> )	Dust Exceedance	VOC ppm AVG 15m (ppm)	VOC Exceedance
2/10/23 9:44	0.401	0.008	0.0105	No	0.087	No
2/10/23 9:45	0.404	0.012	0.0101	No	0.088	No
2/10/23 9:46	0.416	0.027	0.0111	No	0.089	No
2/10/23 9:47	0.412	0.03	0.0125	No	0.09	No
2/10/23 9:48	0.419	0.012	0.0125	No	0.091	No
2/10/23 9:49	0.419	0.009	0.0125	No	0.092	No
2/10/23 9:50	0.418	0.009	0.0127	No	0.092	No
2/10/23 9:51	0.427	0.007	0.0127	No	0.093	No
2/10/23 9:52	0.425	0.008	0.0128	No	0.094	No
2/10/23 9:53	0.417	0.007	0.0127	No	0.095	No
2/10/23 9:54	0.417	0.007	0.0126	No	0.096	No
2/10/23 9:55	0.42	0.007	0.0123	No	0.097	No
2/10/23 9:56	0.424	0.005	0.012	No	0.098	No
2/10/23 9:57	0.422	0.005	0.0113	No	0.098	No
2/10/23 9:58	0.423	0.007	0.0107	No	0.099	No
2/10/23 9:59	0.422	0.008	0.0107	No	0.1	No
2/10/23 10:00	0.418	0.009	0.0105	No	0.101	No
2/10/23 10:01	0.419	0.009	0.0093	No	0.102	No
2/10/23 10:02	0.415	0.01	0.0079	No	0.103	No
2/10/23 10:03	0.41	0.007	0.0076	No	0.104	No
2/10/23 10:04	0.413	0.008	0.0075	No	0.105	No
2/10/23 10:05	0.408	0.006	0.0073	No	0.105	No
2/10/23 10:06	0.411	0.012	0.0077	No	0.106	No
2/10/23 10:07	0.407	0.008	0.0077	No	0.107	No
2/10/23 10:08	0.417	0.007	0.0077	No	0.108	No
2/10/23 10:09	0.421	0.005	0.0075	No	0.109	No
2/10/23 10:10	0.425	0.008	0.0076	No	0.11	No
2/10/23 10:11	0.422	0.006	0.0077	No	0.111	No
2/10/23 10:12	0.422	0.006	0.0077	No	0.112	No
2/10/23 10:13	0.421	0.006	0.0077	No	0.112	No
2/10/23 10:14	0.417	0.005	0.0075	No	0.113	No
2/10/23 10:15	0.423	0.009	0.0075	No	0.114	No
2/10/23 10:16	0.425	0.008	0.0074	No	0.115	No
2/10/23 10:17	0.421	0.015	0.0077	No	0.116	No
2/10/23 10:18	0.424	0.018	0.0085	No	0.117	No
2/10/23 10:19	0.426	0.012	0.0087	No	0.118	No
2/10/23 10:20	0.415	0.007	0.0088	No	0.119	No
2/10/23 10:21	0.421	0.009	0.0086	No	0.119	No
2/10/23 10:22	0.421	0.005	0.0084	No	0.12	No
2/10/23 10:23	0.427	0.006	0.0083	No	0.121	No
2/10/23 10:24	0.422	0.006	0.0084	No	0.122	No
2/10/23 10:25	0.433	0.009	0.0085	No	0.123	No
2/10/23 10:26	0.429	0.013	0.0089	No	0.124	No
2/10/23 10:27	0.433	0.005	0.0089	No	0.125	No
2/10/23 10:28	0.427	0.005	0.0088	No	0.126	No
2/10/23 10:29	0.431	0.006	0.0089	No	0.126	No
2/10/23 10:30	0.433	0.006	0.0087	No	0.127	No
2/10/23 10:31	0.426	0.005	0.0085	No	0.128	No
2/10/23 10:32	0.434	0.013	0.0083	No	0.129	No
2/10/23 10:33	0.426	0.008	0.0077	No	0.13	No
2/10/23 10:34	0.437	0.007	0.0073	No	0.131	No
2/10/23 10:35	0.439	0.007	0.0073	No	0.132	No

## Upwind Station

Time	Instantaneous VOC (ppm)	Instantaneous Mass Conc. Total (mg/m <sup>3</sup> )	Mass Conc. Total mg/m <sup>3</sup> AVG 15m (mg/m <sup>3</sup> )	Dust Exceedance	VOC ppm AVG 15m (ppm)	VOC Exceedance
2/10/23 10:36	0.449	0.008	0.0073	No	0.133	No
2/10/23 10:37	0.558	0.02	0.0083	No	0.134	No
2/10/23 10:38	0.622	0.012	0.0087	No	0.135	No
2/10/23 10:39	0.619	0.012	0.0091	No	0.136	No
2/10/23 10:40	0.598	0.013	0.0093	No	0.137	No
2/10/23 10:41	0.597	0.013	0.0093	No	0.139	No
2/10/23 10:42	0.653	0.016	0.0101	No	0.14	No
2/10/23 10:43	0.621	0.009	0.0103	No	0.141	No
2/10/23 10:44	0.581	0.007	0.0104	No	0.143	No
2/10/23 10:45	0.63	0.01	0.0107	No	0.144	No
2/10/23 10:46	0.615	0.007	0.0108	No	0.145	No
2/10/23 10:47	0.563	0.007	0.0104	No	0.146	No
2/10/23 10:48	1.201	0.05	0.0132	No	0.148	No
2/10/23 10:49	0.82	0.006	0.0131	No	0.15	No
2/10/23 10:50	0.712	0.006	0.0131	No	0.151	No
2/10/23 10:51	0.721	0.006	0.0129	No	0.153	No
2/10/23 10:52	0.658	0.007	0.0121	No	0.154	No
2/10/23 10:53	0.619	0.008	0.0118	No	0.156	No
2/10/23 10:54	0.596	0.006	0.0114	No	0.157	No
2/10/23 10:55	0.58	0.007	0.011	No	0.158	No
2/10/23 10:56	0.553	0.009	0.0107	No	0.16	No
2/10/23 10:57	0.539	0.006	0.0101	No	0.161	No
2/10/23 10:58	0.609	0.011	0.0102	No	0.162	No
2/10/23 10:59	0.569	0.007	0.0102	No	0.163	No
2/10/23 11:00	0.539	0.006	0.0099	No	0.164	No
2/10/23 11:01	0.56	0.007	0.0099	No	0.165	No
2/10/23 11:02	0.54	0.006	0.0099	No	0.167	No
2/10/23 11:03	0.546	0.008	0.0071	No	0.168	No
2/10/23 11:04	0.537	0.008	0.0072	No	0.169	No
2/10/23 11:05	0.546	0.008	0.0073	No	0.17	No
2/10/23 11:06	0.518	0.009	0.0075	No	0.171	No
2/10/23 11:07	0.513	0.009	0.0077	No	0.172	No
2/10/23 11:08	0.502	0.007	0.0076	No	0.173	No
2/10/23 11:09	0.516	0.004	0.0075	No	0.174	No
2/10/23 11:10	0.521	0.005	0.0073	No	0.175	No
2/10/23 11:11	0.513	0.009	0.0073	No	0.177	No
2/10/23 11:12	0.531	0.006	0.0073	No	0.178	No
2/10/23 11:13	0.538	0.008	0.0071	No	0.179	No
2/10/23 11:14	0.529	0.009	0.0073	No	0.18	No
2/10/23 11:15	0.538	0.006	0.0073	No	0.181	No
2/10/23 11:16	0.53	0.014	0.0077	No	0.182	No
2/10/23 11:17	0.517	0.019	0.0086	No	0.183	No
2/10/23 11:18	0.513	0.022	0.0095	No	0.184	No
2/10/23 11:19	0.522	0.013	0.0099	No	0.185	No
2/10/23 11:20	0.512	0.008	0.0099	No	0.186	No
2/10/23 11:21	0.507	0.008	0.0098	No	0.187	No
2/10/23 11:22	0.517	0.006	0.0096	No	0.189	No
2/10/23 11:23	0.528	0.006	0.0095	No	0.19	No
2/10/23 11:24	0.51	0.005	0.0096	No	0.191	No
2/10/23 11:25	0.515	0.005	0.0096	No	0.192	No
2/10/23 11:26	0.512	0.007	0.0095	No	0.193	No
2/10/23 11:27	0.502	0.008	0.0096	No	0.194	No



## Upwind Station

Time	Instantaneous VOC (ppm)	Instantaneous Mass Conc. Total (mg/m <sup>3</sup> )	Mass Conc. Total mg/m <sup>3</sup> AVG 15m (mg/m <sup>3</sup> )	Dust Exceedance	VOC ppm AVG 15m (ppm)	VOC Exceedance
2/10/23 11:28	0.518	0.006	0.0095	No	0.195	No
2/10/23 11:29	0.539	0.006	0.0093	No	0.196	No
2/10/23 11:30	0.536	0.005	0.0092	No	0.197	No
2/10/23 11:31	0.529	0.006	0.0087	No	0.198	No
2/10/23 11:32	0.535	0.004	0.0077	No	0.199	No
2/10/23 11:33	0.532	0.005	0.0065	No	0.2	No
2/10/23 11:34	0.527	0.004	0.0059	No	0.202	No
2/10/23 11:35	0.532	0.004	0.0057	No	0.203	No
2/10/23 11:36	0.517	0.006	0.0055	No	0.204	No
2/10/23 11:37	0.51	0.007	0.0056	No	0.205	No
2/10/23 11:38	0.508	0.011	0.0059	No	0.206	No
2/10/23 11:39	0.506	0.013	0.0065	No	0.207	No
2/10/23 11:40	0.497	0.009	0.0067	No	0.208	No
2/10/23 11:41	0.505	0.006	0.0067	No	0.209	No
2/10/23 11:42	0.504	0.005	0.0065	No	0.21	No
2/10/23 11:43	0.504	0.005	0.0064	No	0.211	No
2/10/23 11:44	0.5	0.005	0.0063	No	0.212	No
2/10/23 11:45	0.516	0.008	0.0065	No	0.213	No
2/10/23 11:46	0.515	0.012	0.0069	No	0.214	No
2/10/23 11:47	0.516	0.011	0.0074	No	0.215	No
2/10/23 11:48	0.504	0.01	0.0077	No	0.216	No
2/10/23 11:49	0.517	0.005	0.0078	No	0.218	No
2/10/23 11:50	0.505	0.004	0.0078	No	0.219	No
2/10/23 11:51	0.499	0.006	0.0078	No	0.22	No
2/10/23 11:52	0.507	0.013	0.0082	No	0.221	No
2/10/23 11:53	0.502	0.011	0.0082	No	0.222	No
2/10/23 11:54	0.505	0.01	0.008	No	0.223	No
2/10/23 11:55	0.502	0.034	0.0097	No	0.224	No
2/10/23 11:56	0.506	0.014	0.0102	No	0.225	No
2/10/23 11:57	0.508	0.01	0.0105	No	0.226	No
2/10/23 11:58	0.511	0.011	0.0109	No	0.227	No
2/10/23 11:59	0.514	0.015	0.0116	No	0.228	No
2/10/23 12:00	0.508	0.018	0.0123	No	0.229	No
2/10/23 12:01	0.519	0.007	0.0119	No	0.23	No
2/10/23 12:02	0.513	0.021	0.0126	No	0.231	No
2/10/23 12:03	0.512	0.022	0.0134	No	0.232	No
2/10/23 12:04	0.525	0.008	0.0136	No	0.234	No
2/10/23 12:05	0.52	0.006	0.0137	No	0.235	No
2/10/23 12:06	0.524	0.009	0.0139	No	0.236	No
2/10/23 12:07	0.526	0.005	0.0134	No	0.237	No
2/10/23 12:08	0.541	0.014	0.0136	No	0.238	No
2/10/23 12:09	0.542	0.014	0.0139	No	0.239	No
2/10/23 12:10	0.525	0.004	0.0119	No	0.24	No
2/10/23 12:11	0.542	0.004	0.0112	No	0.241	No
2/10/23 12:12	0.528	0.005	0.0109	No	0.242	No
2/10/23 12:13	0.535	0.008	0.0107	No	0.243	No
2/10/23 12:14	0.539	0.007	0.0101	No	0.245	No
2/10/23 12:15	0.534	0.006	0.0093	No	0.246	No
2/10/23 12:16	0.54	0.005	0.0092	No	0.247	No
2/10/23 12:17	0.544	0.005	0.0081	No	0.248	No
2/10/23 12:18	0.552	0.022	0.0081	No	0.249	No
2/10/23 12:19	0.534	0.005	0.0079	No	0.25	No

## Upwind Station

Time	Instantaneous VOC (ppm)	Instantaneous Mass Conc. Total (mg/m <sup>3</sup> )	Mass Conc. Total mg/m <sup>3</sup> AVG 15m (mg/m <sup>3</sup> )	Dust Exceedance	VOC ppm AVG 15m (ppm)	VOC Exceedance
2/10/23 12:20	0.569	0.006	0.0079	No	0.251	No
2/10/23 12:21	0.614	0.064	0.0116	No	0.253	No
2/10/23 12:22	0.571	0.325	0.0329	No	0.254	No
2/10/23 12:23	0.562	0.053	0.0355	No	0.255	No
2/10/23 12:24	0.562	0.008	0.0351	No	0.256	No
2/10/23 12:25	0.566	0.069	0.0395	No	0.257	No
2/10/23 12:26	0.543	0.036	0.0416	No	0.258	No
2/10/23 12:27	0.527	0.033	0.0435	No	0.26	No
2/10/23 12:28	0.531	0.007	0.0434	No	0.261	No
2/10/23 12:29	0.527	0.006	0.0433	No	0.262	No
2/10/23 12:30	0.533	0.007	0.0434	No	0.263	No
2/10/23 12:31	0.53	0.005	0.0434	No	0.264	No
2/10/23 12:32	0.53	0.007	0.0435	No	0.265	No
2/10/23 12:33	0.532	0.01	0.0427	No	0.266	No
2/10/23 12:34	0.535	0.009	0.043	No	0.267	No
2/10/23 12:35	0.531	0.005	0.0429	No	0.268	No
2/10/23 12:36	0.526	0.007	0.0391	No	0.27	No
2/10/23 12:37	0.541	0.008	0.018	No	0.271	No
2/10/23 12:38	0.544	0.01	0.0151	No	0.272	No
2/10/23 12:39	0.53	0.011	0.0153	No	0.273	No
2/10/23 12:40	0.535	0.005	0.0111	No	0.274	No
2/10/23 12:41	0.543	0.012	0.0095	No	0.275	No
2/10/23 12:42	0.54	0.013	0.0081	No	0.276	No
2/10/23 12:43	0.566	0.015	0.0087	No	0.277	No
2/10/23 12:44	0.555	0.009	0.0089	No	0.279	No
2/10/23 12:45	0.563	0.013	0.0093	No	0.28	No
2/10/23 12:46	0.557	0.009	0.0095	No	0.281	No
2/10/23 12:47	0.55	0.008	0.0096	No	0.282	No
2/10/23 12:48	0.534	0.01	0.0096	No	0.283	No
2/10/23 12:49	0.525	0.005	0.0093	No	0.284	No
2/10/23 12:50	0.529	0.004	0.0093	No	0.285	No
2/10/23 12:51	0.521	0.005	0.0091	No	0.286	No
2/10/23 12:52	0.531	0.005	0.0089	No	0.288	No
2/10/23 12:53	0.553	0.016	0.0093	No	0.289	No
2/10/23 12:54	0.538	0.008	0.0091	No	0.29	No
2/10/23 12:55	0.53	0.019	0.0101	No	0.291	No
2/10/23 12:56	0.542	0.006	0.0097	No	0.292	No
2/10/23 12:57	0.533	0.006	0.0092	No	0.293	No
2/10/23 12:58	0.53	0.008	0.0087	No	0.294	No
2/10/23 12:59	0.529	0.006	0.0085	No	0.295	No
2/10/23 13:00	0.537	0.005	0.008	No	0.296	No
2/10/23 13:01	0.537	0.008	0.0079	No	0.298	No
2/10/23 13:02	0.537	0.005	0.0077	No	0.299	No
2/10/23 13:03	0.551	0.004	0.0073	No	0.3	No
2/10/23 13:04	0.543	0.004	0.0073	No	0.301	No
2/10/23 13:05	0.539	0.004	0.0073	No	0.302	No
2/10/23 13:06	0.545	0.009	0.0075	No	0.303	No
2/10/23 13:07	0.547	0.012	0.008	No	0.304	No
2/10/23 13:08	0.546	0.012	0.0077	No	0.306	No
2/10/23 13:09	0.558	0.008	0.0077	No	0.307	No
2/10/23 13:10	0.553	0.007	0.0069	No	0.308	No
2/10/23 13:11	0.552	0.005	0.0069	No	0.309	No

## Upwind Station

Time	Instantaneous VOC (ppm)	Instantaneous Mass Conc. Total (mg/m <sup>3</sup> )	Mass Conc. Total mg/m <sup>3</sup> AVG 15m (mg/m <sup>3</sup> )	Dust Exceedance	VOC ppm AVG 15m (ppm)	VOC Exceedance
2/10/23 13:12	0.552	0.012	0.0073	No	0.31	No
2/10/23 13:13	0.547	0.015	0.0077	No	0.311	No
2/10/23 13:14	0.559	0.03	0.0093	No	0.312	No
2/10/23 13:15	0.58	0.045	0.012	No	0.314	No
2/10/23 13:16	0.569	0.027	0.0133	No	0.315	No
2/10/23 13:17	0.609	0.025	0.0146	No	0.316	No
2/10/23 13:18	0.592	0.016	0.0154	No	0.317	No
2/10/23 13:19	0.591	0.011	0.0159	No	0.318	No
2/10/23 13:20	0.597	0.01	0.0163	No	0.32	No
2/10/23 13:21	0.585	0.01	0.0163	No	0.321	No
2/10/23 13:22	0.59	0.007	0.016	No	0.322	No
2/10/23 13:23	0.582	0.019	0.0165	No	0.323	No
2/10/23 13:24	0.577	0.009	0.0165	No	0.325	No
2/10/23 13:25	0.591	0.004	0.0163	No	0.326	No
2/10/23 13:26	0.572	0.005	0.0163	No	0.327	No
2/10/23 13:27	0.579	0.009	0.0161	No	0.328	No
2/10/23 13:28	0.586	0.014	0.0161	No	0.329	No
2/10/23 13:29	0.589	0.009	0.0147	No	0.331	No
2/10/23 13:30	0.576	0.054	0.0153	No	0.332	No
2/10/23 13:31	0.559	0.013	0.0143	No	0.333	No
2/10/23 13:32	0.573	0.014	0.0136	No	0.334	No
2/10/23 13:33	0.568	0.023	0.0141	No	0.335	No
2/10/23 13:34	0.564	0.014	0.0143	No	0.337	No
2/10/23 13:35	0.575	0.01	0.0143	No	0.338	No
2/10/23 13:36	0.567	0.019	0.0149	No	0.339	No
2/10/23 13:37	0.563	0.006	0.0148	No	0.34	No
2/10/23 13:38	0.559	0.007	0.014	No	0.341	No
2/10/23 13:39	0.566	0.011	0.0141	No	0.343	No
2/10/23 13:40	0.589	0.011	0.0146	No	0.344	No
2/10/23 13:41	0.575	0.013	0.0151	No	0.345	No
2/10/23 13:42	0.584	0.006	0.0149	No	0.346	No
2/10/23 13:43	0.594	0.009	0.0146	No	0.347	No
2/10/23 13:44	0.602	0.025	0.0157	No	0.349	No
2/10/23 13:45	0.7	0.023	0.0136	No	0.35	No
2/10/23 13:46	0.7	0.015	0.0137	No	0.351	No
2/10/23 13:47	0.692	0.011	0.0135	No	0.353	No
2/10/23 13:48	0.685	0.013	0.0129	No	0.354	No
2/10/23 13:49	0.652	0.009	0.0125	No	0.356	No
2/10/23 13:50	0.624	0.007	0.0123	No	0.357	No
2/10/23 13:51	0.614	0.007	0.0115	No	0.358	No
2/10/23 13:52	0.611	0.008	0.0117	No	0.36	No
2/10/23 13:53	0.59	0.021	0.0126	No	0.361	No
2/10/23 13:54	0.597	0.019	0.0131	No	0.362	No
2/10/23 13:55	0.59	0.014	0.0133	No	0.363	No
2/10/23 13:56	0.597	0.015	0.0135	No	0.365	No
2/10/23 13:57	0.596	0.018	0.0143	No	0.366	No
2/10/23 13:58	0.589	0.012	0.0145	No	0.367	No
2/10/23 13:59	0.616	0.011	0.0135	No	0.368	No
2/10/23 14:00	0.598	0.009	0.0126	No	0.37	No
2/10/23 14:01	0.602	0.007	0.0121	No	0.371	No
2/10/23 14:02	0.613	0.01	0.012	No	0.372	No
2/10/23 14:03	0.633	0.015	0.0121	No	0.373	No

## Upwind Station

Time	Instantaneous VOC (ppm)	Instantaneous Mass Conc. Total (mg/m <sup>3</sup> )	Mass Conc. Total mg/m <sup>3</sup> AVG 15m (mg/m <sup>3</sup> )	Dust Exceedance	VOC ppm AVG 15m (ppm)	VOC Exceedance
2/10/23 14:04	0.633	0.016	0.0126	No	0.375	No
2/10/23 14:05	0.631	0.01	0.0128	No	0.376	No
2/10/23 14:06	0.623	0.006	0.0127	No	0.377	No
2/10/23 14:07	0.636	0.006	0.0126	No	0.379	No
2/10/23 14:08	0.625	0.006	0.0116	No	0.38	No
2/10/23 14:09	0.623	0.006	0.0107	No	0.381	No
2/10/23 14:10	0.607	0.008	0.0103	No	0.383	No
2/10/23 14:11	0.609	0.008	0.0099	No	0.384	No
2/10/23 14:12	0.607	0.008	0.0092	No	0.385	No
2/10/23 14:13	0.606	0.007	0.0089	No	0.386	No
2/10/23 14:14	0.626	0.011	0.0089	No	0.388	No
2/10/23 14:15	0.613	0.006	0.0087	No	0.389	No
2/10/23 14:16	0.619	0.006	0.0086	No	0.39	No
2/10/23 14:17	0.625	0.009	0.0085	No	0.392	No
2/10/23 14:18	0.633	0.01	0.0082	No	0.393	No
2/10/23 14:19	0.619	0.008	0.0077	No	0.394	No
2/10/23 14:20	0.634	0.007	0.0075	No	0.396	No
2/10/23 14:21	0.626	0.007	0.0075	No	0.397	No
2/10/23 14:22	0.621	0.008	0.0077	No	0.398	No
2/10/23 14:23	0.641	0.023	0.0088	No	0.399	No
2/10/23 14:24	0.629	0.008	0.0089	No	0.401	No
2/10/23 14:25	0.647	0.012	0.0092	No	0.402	No
2/10/23 14:26	0.655	0.011	0.0094	No	0.403	No
2/10/23 14:27	0.645	0.013	0.0097	No	0.405	No
2/10/23 14:28	0.633	0.008	0.0098	No	0.406	No
2/10/23 14:29	0.627	0.051	0.0125	No	0.407	No
2/10/23 14:30	0.664	0.01	0.0127	No	0.409	No
2/10/23 14:31	0.676	0.009	0.0129	No	0.41	No
2/10/23 14:32	0.669	0.017	0.0135	No	0.412	No
2/10/23 14:33	0.651	0.021	0.0142	No	0.413	No
2/10/23 14:34	0.624	0.007	0.0141	No	0.414	No
2/10/23 14:35	0.636	0.006	0.0141	No	0.416	No
2/10/23 14:36	0.646	0.008	0.0141	No	0.417	No
2/10/23 14:37	0.658	0.012	0.0144	No	0.418	No
2/10/23 14:38	0.674	0.012	0.0137	No	0.42	No
2/10/23 14:39	0.675	0.012	0.0139	No	0.421	No
2/10/23 14:40	0.695	0.013	0.014	No	0.422	No
2/10/23 14:41	0.673	0.015	0.0143	No	0.424	No
2/10/23 14:42	0.631	0.022	0.0149	No	0.425	No
2/10/23 14:43	0.621	0.008	0.0149	No	0.427	No
2/10/23 14:44	0.646	0.006	0.0119	No	0.428	No
2/10/23 14:45	0.634	0.005	0.0115	No	0.429	No
2/10/23 14:46	0.624	0.006	0.0113	No	0.43	No
2/10/23 14:47	0.639	0.005	0.0105	No	0.432	No
2/10/23 14:48	0.651	0.006	0.0095	No	0.433	No
2/10/23 14:49	0.638	0.005	0.0094	No	0.434	No
2/10/23 14:50	0.65	0.011	0.0097	No	0.436	No
2/10/23 14:51	0.658	0.014	0.0101	No	0.437	No
2/10/23 14:52	0.612	0.01	0.01	No	0.439	No
2/10/23 14:53	0.617	0.008	0.0097	No	0.44	No
2/10/23 14:54	0.622	0.009	0.0095	No	0.441	No
2/10/23 14:55	0.603	0.006	0.0091	No	0.442	No

**Upwind Station**

Time	Instantaneous VOC (ppm)	Instantaneous Mass Conc. Total (mg/m <sup>3</sup> )	Mass Conc. Total mg/m <sup>3</sup> AVG 15m (mg/m <sup>3</sup> )	Dust Exceedance	VOC ppm AVG 15m (ppm)	VOC Exceedance
2/10/23 14:56	0.609	0.008	0.0086	No	0.444	No
2/10/23 14:57	0.607	0.009	0.0077	No	0.445	No
2/10/23 14:58	0.61	0.004	0.0075	No	0.446	No
2/10/23 14:59	0.634	0.006	0.0075	No	0.447	No
2/10/23 15:00	0.622	0.006	0.0075	No	0.449	No
2/10/23 15:01	0.639	0.008	0.0077	No	0.45	No
2/10/23 15:02	0.62	0.011	0.0081	No	0.451	No
2/10/23 15:03	0.616	0.009	0.0083	No	0.453	No
2/10/23 15:04	0.604	0.01	0.0086	No	0.454	No
2/10/23 15:05	0.592	0.008	0.0084	No	0.455	No
2/10/23 15:06	0.609	0.011	0.0082	No	0.456	No
2/10/23 15:07	0.606	0.01	0.0082	No	0.458	No
2/10/23 15:08	0.6	0.013	0.0085	No	0.459	No
2/10/23 15:09	0.606	0.006	0.0083	No	0.46	No
2/10/23 15:10	0.6	0.007	0.0084	No	0.461	No
2/10/23 15:11	0.599	0.005	0.0082	No	0.463	No
2/10/23 15:12	0.618	0.023	0.0091	No	0.464	No
2/10/23 15:13	0.612	0.026	0.0106	No	0.465	No
2/10/23 15:14	0.618	0.009	0.0108	No	0.467	No
2/10/23 15:15	0.622	0.014	0.0113	No	0.468	No
2/10/23 15:16	0.615	0.021	0.0122	No	0.469	No
2/10/23 15:17	0.601	0.011	0.0122	No	0.47	No
2/10/23 15:18	0.602	0.013	0.0125	No	0.472	No
2/10/23 15:19	0.606	0.037	0.0143	No	0.473	No
2/10/23 15:20	0.607	0.032	0.0159	No	0.474	No
2/10/23 15:21	0.587	0.036	0.0175	No	0.475	No
2/10/23 15:22	0.582	0.024	0.0185	No	0.477	No
2/10/23 15:23	0.575	0.045	0.0206	No	0.478	No
2/10/23 15:24	0.565	0.019	0.0215	No	0.479	No
2/10/23 15:25	0.581	0.009	0.0216	No	0.48	No
2/10/23 15:26	0.568	0.021	0.0227	No	0.481	No
2/10/23 15:27	0.581	0.026	0.0229	No	0.483	No
2/10/23 15:28	0.663	0.017	0.0223	No	0.484	No
2/10/23 15:29	0.701	0.009	0.0223	No	0.485	No
2/10/23 15:30	0.641	0.05	0.0247	No	0.486	No
2/10/23 15:31	0.614	0.012	0.0241	No	0.488	No
2/10/23 15:32	0.606	0.005	0.0237	No	0.489	No
2/10/23 15:33	0.614	0.006	0.0232	No	0.49	No
2/10/23 15:34	0.604	0.011	0.0215	No	0.492	No
2/10/23 15:35	0.593	0.006	0.0197	No	0.493	No
2/10/23 15:36	0.6	0.008	0.0179	No	0.494	No
2/10/23 15:37	0.581	0.028	0.0181	No	0.495	No

**Downwind Station**

Time	Instantaneous VOC (ppm)	Instantaneous Mass Conc. Total (mg/m <sup>3</sup> )	Mass Conc. Total mg/m <sup>3</sup> AVG 15m (mg/m <sup>3</sup> )	Dust Exceedance	VOC ppm AVG 15m (ppm)	VOC Exceedance
2/10/2023 7:04	0	0.057	0.057	No	0	No
2/10/2023 7:05	0	0.029	0.043	No	0	No
2/10/2023 7:06	0.406	0.022	0.036	No	0.1353	No
2/10/2023 7:07	0.009	0.024	0.033	No	0.1038	No
2/10/2023 7:08	0.068	0.022	0.0308	No	0.0966	No
2/10/2023 7:09	0.039	0.017	0.0285	No	0.087	No
2/10/2023 7:10	0.017	0.016	0.0267	No	0.077	No
2/10/2023 7:11	0.104	0.015	0.0253	No	0.0804	No
2/10/2023 7:12	0.002	0.013	0.0239	No	0.0717	No
2/10/2023 7:13	0.074	0.015	0.023	No	0.0719	No
2/10/2023 7:14	0.043	0.016	0.0224	No	0.0693	No
2/10/2023 7:15	0.025	0.016	0.0218	No	0.0656	No
2/10/2023 7:16	0.113	0.022	0.0218	No	0.0692	No
2/10/2023 7:17	0.028	0.019	0.0216	No	0.0663	No
2/10/2023 7:18	0.02	0.015	0.0212	No	0.0632	No
2/10/2023 7:19	0.109	0.021	0.0188	No	0.0705	No
2/10/2023 7:20	0.052	0.042	0.0197	No	0.0739	No
2/10/2023 7:21	0.035	0.033	0.0204	No	0.0492	No
2/10/2023 7:22	0.043	0.019	0.0201	No	0.0515	No
2/10/2023 7:23	0.054	0.015	0.0196	No	0.0505	No
2/10/2023 7:24	0.066	0.024	0.0201	No	0.0523	No
2/10/2023 7:25	0.068	0.019	0.0203	No	0.0557	No
2/10/2023 7:26	0.062	0.017	0.0204	No	0.0529	No
2/10/2023 7:27	0.049	0.014	0.0205	No	0.0561	No
2/10/2023 7:28	0.044	0.013	0.0203	No	0.0541	No
2/10/2023 7:29	0.059	0.013	0.0201	No	0.0551	No
2/10/2023 7:30	0.062	0.013	0.0199	No	0.0576	No
2/10/2023 7:31	0.062	0.014	0.0194	No	0.0542	No
2/10/2023 7:32	0.064	0.013	0.019	No	0.0566	No
2/10/2023 7:33	0.067	0.013	0.0189	No	0.0597	No
2/10/2023 7:34	0.074	0.014	0.0184	No	0.0574	No
2/10/2023 7:35	0.079	0.019	0.0169	No	0.0592	No
2/10/2023 7:36	0.078	0.016	0.0157	No	0.0621	No
2/10/2023 7:37	0.088	0.016	0.0155	No	0.0651	No
2/10/2023 7:38	0.095	0.013	0.0154	No	0.0678	No
2/10/2023 7:39	0.093	0.013	0.0147	No	0.0696	No
2/10/2023 7:40	0.102	0.013	0.0143	No	0.0719	No
2/10/2023 7:41	0.096	0.015	0.0141	No	0.0741	No
2/10/2023 7:42	0.107	0.013	0.0141	No	0.078	No
2/10/2023 7:43	0.109	0.017	0.0143	No	0.0823	No
2/10/2023 7:44	0.103	0.015	0.0145	No	0.0853	No
2/10/2023 7:45	0.135	0.015	0.0146	No	0.0901	No
2/10/2023 7:46	0.128	0.018	0.0149	No	0.0945	No
2/10/2023 7:47	0.12	0.016	0.0151	No	0.0983	No
2/10/2023 7:48	0.144	0.017	0.0153	No	0.1034	No
2/10/2023 7:49	0.159	0.025	0.0161	No	0.1091	No
2/10/2023 7:50	0.149	0.021	0.0162	No	0.1137	No
2/10/2023 7:51	0.18	0.022	0.0166	No	0.1205	No
2/10/2023 7:52	0.18	0.021	0.0169	No	0.1267	No
2/10/2023 7:53	0.163	0.028	0.0179	No	0.1312	No
2/10/2023 7:54	0.144	0.028	0.0189	No	0.1346	No
2/10/2023 7:55	0.158	0.029	0.02	No	0.1383	No
2/10/2023 7:56	0.155	0.024	0.0206	No	0.1423	No
2/10/2023 7:57	0.155	0.02	0.0211	No	0.1455	No

Downwind Station						
Time	Instantaneous VOC (ppm)	Instantaneous Mass Conc. Total (mg/m <sup>3</sup> )	Mass Conc. Total mg/m <sup>3</sup> AVG 15m (mg/m <sup>3</sup> )	Dust Exceedance	VOC ppm AVG 15m (ppm)	VOC Exceedance
2/10/2023 7:58	0.161	0.02	0.0213	No	0.1489	No
2/10/2023 7:59	0.186	0.018	0.0215	No	0.1545	No
2/10/2023 8:00	0.174	0.023	0.022	No	0.1571	No
2/10/2023 8:01	0.179	0.016	0.0219	No	0.1605	No
2/10/2023 8:02	0.164	0.012	0.0216	No	0.1634	No
2/10/2023 8:03	0.151	0.011	0.0212	No	0.1639	No
2/10/2023 8:04	0.172	0.008	0.0201	No	0.1647	No
2/10/2023 8:05	0.178	0.011	0.0194	No	0.1667	No
2/10/2023 8:06	0.176	0.011	0.0187	No	0.1664	No
2/10/2023 8:07	0.177	0.019	0.0185	No	0.1662	No
2/10/2023 8:08	0.168	0.014	0.0176	No	0.1665	No
2/10/2023 8:09	0.171	0.015	0.0167	No	0.1683	No
2/10/2023 8:10	0.184	0.011	0.0155	No	0.1701	No
2/10/2023 8:11	0.197	0.016	0.015	No	0.1729	No
2/10/2023 8:12	0.175	0.009	0.0143	No	0.1742	No
2/10/2023 8:13	0.181	0.014	0.0139	No	0.1755	No
2/10/2023 8:14	0.179	0.009	0.0133	No	0.1751	No
2/10/2023 8:15	0.169	0.009	0.0123	No	0.1747	No
2/10/2023 8:16	0.179	0.007	0.0117	No	0.1747	No
2/10/2023 8:17	0.178	0.014	0.0119	No	0.1757	No
2/10/2023 8:18	0.171	0.017	0.0123	No	0.177	No
2/10/2023 8:19	0.178	0.011	0.0125	No	0.1774	No
2/10/2023 8:20	0.189	0.016	0.0128	No	0.1781	No
2/10/2023 8:21	0.192	0.013	0.0129	No	0.1792	No
2/10/2023 8:22	0.189	0.008	0.0122	No	0.18	No
2/10/2023 8:23	0.183	0.007	0.0117	No	0.181	No
2/10/2023 8:24	0.282	0.007	0.0112	No	0.1884	No
2/10/2023 8:25	0.212	0.006	0.0109	No	0.1903	No
2/10/2023 8:26	0.211	0.007	0.0103	No	0.1912	No
2/10/2023 8:27	0.204	0.009	0.0103	No	0.1931	No
2/10/2023 8:28	0.22	0.005	0.0097	No	0.1957	No
2/10/2023 8:29	0.227	0.007	0.0095	No	0.1989	No
2/10/2023 8:30	0.221	0.007	0.0094	No	0.2024	No
2/10/2023 8:31	0.203	0.005	0.0093	No	0.204	No
2/10/2023 8:32	0.208	0.005	0.0087	No	0.206	No
2/10/2023 8:33	0.199	0.004	0.0078	No	0.2079	No
2/10/2023 8:34	0.219	0.005	0.0074	No	0.2106	No
2/10/2023 8:35	0.238	0.009	0.0069	No	0.2139	No
2/10/2023 8:36	0.219	0.007	0.0065	No	0.2157	No
2/10/2023 8:37	0.229	0.009	0.0066	No	0.2183	No
2/10/2023 8:38	0.216	0.006	0.0065	No	0.2205	No
2/10/2023 8:39	0.225	0.016	0.0071	No	0.2167	No
2/10/2023 8:40	0.217	0.01	0.0074	No	0.2171	No
2/10/2023 8:41	0.229	0.007	0.0074	No	0.2183	No
2/10/2023 8:42	0.232	0.007	0.0073	No	0.2201	No
2/10/2023 8:43	0.25	0.022	0.0084	No	0.2221	No
2/10/2023 8:44	0.263	0.008	0.0085	No	0.2245	No
2/10/2023 8:45	0.253	0.013	0.0089	No	0.2267	No
2/10/2023 8:46	0.273	0.009	0.0091	No	0.2313	No
2/10/2023 8:47	0.247	0.009	0.0094	No	0.2339	No
2/10/2023 8:48	0.253	0.008	0.0097	No	0.2375	No
2/10/2023 8:49	0.233	0.009	0.0099	No	0.2385	No
2/10/2023 8:50	0.241	0.014	0.0103	No	0.2387	No
2/10/2023 8:51	0.233	0.013	0.0107	No	0.2396	No

**Downwind Station**

Time	Instantaneous VOC (ppm)	Instantaneous Mass Conc. Total (mg/m <sup>3</sup> )	Mass Conc. Total mg/m <sup>3</sup> AVG 15m (mg/m <sup>3</sup> )	Dust Exceedance	VOC ppm AVG 15m (ppm)	VOC Exceedance
2/10/2023 8:52	0.237	0.012	0.0109	No	0.2401	No
2/10/2023 8:53	0.241	0.011	0.0112	No	0.2418	No
2/10/2023 8:54	0.232	0.013	0.011	No	0.2423	No
2/10/2023 8:55	0.23	0.017	0.0115	No	0.2431	No
2/10/2023 8:56	0.233	0.012	0.0118	No	0.2434	No
2/10/2023 8:57	0.251	0.014	0.0123	No	0.2447	No
2/10/2023 8:58	0.232	0.012	0.0116	No	0.2435	No
2/10/2023 8:59	0.253	0.015	0.0121	No	0.2428	No
2/10/2023 9:00	0.283	0.013	0.0121	No	0.2448	No
2/10/2023 9:01	0.352	0.044	0.0144	No	0.2501	No
2/10/2023 9:02	0.502	0.019	0.0151	No	0.2671	No
2/10/2023 9:03	0.313	0.016	0.0156	No	0.2711	No
2/10/2023 9:04	0.272	0.018	0.0162	No	0.2737	No
2/10/2023 9:05	0.266	0.023	0.0168	No	0.2753	No
2/10/2023 9:06	0.264	0.02	0.0173	No	0.2774	No
2/10/2023 9:07	0.263	0.024	0.0181	No	0.2791	No
2/10/2023 9:08	0.257	0.021	0.0187	No	0.2802	No
2/10/2023 9:09	0.252	0.023	0.0194	No	0.2815	No
2/10/2023 9:10	0.255	0.024	0.0199	No	0.2832	No
2/10/2023 9:11	0.262	0.023	0.0206	No	0.2851	No
2/10/2023 9:12	0.25	0.02	0.021	No	0.2851	No
2/10/2023 9:13	0.26	0.029	0.0221	No	0.2869	No
2/10/2023 9:14	0.263	0.022	0.0226	No	0.2876	No
2/10/2023 9:15	0.25	0.021	0.0231	No	0.2854	No
2/10/2023 9:16	0.251	0.019	0.0215	No	0.2787	No
2/10/2023 9:17	0.254	0.02	0.0215	No	0.2621	No
2/10/2023 9:18	0.254	0.019	0.0217	No	0.2582	No
2/10/2023 9:19	0.267	0.019	0.0218	No	0.2579	No
2/10/2023 9:20	0.253	0.036	0.0227	No	0.257	No
2/10/2023 9:21	0.253	0.079	0.0266	No	0.2563	No
2/10/2023 9:22	0.265	0.025	0.0267	No	0.2564	No
2/10/2023 9:23	0.259	0.018	0.0265	No	0.2565	No
2/10/2023 9:24	0.247	0.018	0.0261	No	0.2562	No
2/10/2023 9:25	0.245	0.018	0.0257	No	0.2555	No
2/10/2023 9:26	0.264	0.019	0.0255	No	0.2557	No
2/10/2023 9:27	0.251	0.019	0.0254	No	0.2557	No
2/10/2023 9:28	0.259	0.024	0.0251	No	0.2557	No
2/10/2023 9:29	0.297	0.022	0.0251	No	0.2579	No
2/10/2023 9:30	0.242	0.025	0.0253	No	0.2574	No
2/10/2023 9:31	0.257	0.023	0.0256	No	0.2578	No
2/10/2023 9:32	0.254	0.022	0.0257	No	0.2578	No
2/10/2023 9:33	0.252	0.025	0.0261	No	0.2577	No
2/10/2023 9:34	0.246	0.021	0.0263	No	0.2563	No
2/10/2023 9:35	0.252	0.02	0.0252	No	0.2562	No
2/10/2023 9:36	0.26	0.021	0.0213	No	0.2567	No
2/10/2023 9:37	0.283	0.022	0.0211	No	0.2579	No
2/10/2023 9:38	0.257	0.03	0.0219	No	0.2577	No
2/10/2023 9:39	0.254	0.029	0.0227	No	0.2582	No
2/10/2023 9:40	0.246	0.023	0.023	No	0.2583	No
2/10/2023 9:41	0.243	0.023	0.0233	No	0.2569	No
2/10/2023 9:42	0.251	0.037	0.0245	No	0.2569	No
2/10/2023 9:43	0.251	0.029	0.0248	No	0.2563	No
2/10/2023 9:44	0.238	0.023	0.0249	No	0.2524	No
2/10/2023 9:45	0.249	0.026	0.0249	No	0.2529	No



**Downwind Station**

Time	Instantaneous VOC (ppm)	Instantaneous Mass Conc. Total (mg/m <sup>3</sup> )	Mass Conc. Total mg/m <sup>3</sup> AVG 15m (mg/m <sup>3</sup> )	Dust Exceedance	VOC ppm AVG 15m (ppm)	VOC Exceedance
2/10/2023 9:46	0.271	0.035	0.0257	No	0.2538	No
2/10/2023 9:47	0.278	0.07	0.0289	No	0.2554	No
2/10/2023 9:48	0.26	0.042	0.0301	No	0.2559	No
2/10/2023 9:49	0.302	0.026	0.0304	No	0.2597	No
2/10/2023 9:50	0.275	0.025	0.0307	No	0.2612	No
2/10/2023 9:51	0.377	0.025	0.031	No	0.269	No
2/10/2023 9:52	0.284	0.028	0.0314	No	0.2691	No
2/10/2023 9:53	0.26	0.028	0.0313	No	0.2693	No
2/10/2023 9:54	0.307	0.026	0.0311	No	0.2728	No
2/10/2023 9:55	0.279	0.024	0.0311	No	0.275	No
2/10/2023 9:56	0.265	0.022	0.0311	No	0.2765	No
2/10/2023 9:57	0.296	0.023	0.0301	No	0.2795	No
2/10/2023 9:58	0.271	0.023	0.0297	No	0.2808	No
2/10/2023 9:59	0.275	0.027	0.03	No	0.2833	No
2/10/2023 10:00	0.259	0.03	0.0303	No	0.2839	No
2/10/2023 10:01	0.293	0.025	0.0296	No	0.2854	No
2/10/2023 10:02	0.279	0.024	0.0265	No	0.2855	No
2/10/2023 10:03	0.286	0.029	0.0257	No	0.2872	No
2/10/2023 10:04	0.303	0.034	0.0262	No	0.2873	No
2/10/2023 10:05	0.308	0.025	0.0262	No	0.2895	No
2/10/2023 10:06	0.262	0.041	0.0273	No	0.2818	No
2/10/2023 10:07	0.275	0.03	0.0274	No	0.2812	No
2/10/2023 10:08	0.272	0.024	0.0271	No	0.282	No
2/10/2023 10:09	0.251	0.031	0.0275	No	0.2783	No
2/10/2023 10:10	0.259	0.031	0.0279	No	0.2769	No
2/10/2023 10:11	0.261	0.033	0.0287	No	0.2767	No
2/10/2023 10:12	0.277	0.029	0.0291	No	0.2754	No
2/10/2023 10:13	0.251	0.028	0.0294	No	0.2741	No
2/10/2023 10:14	0.285	0.026	0.0293	No	0.2747	No
2/10/2023 10:15	0.306	0.025	0.029	No	0.2779	No
2/10/2023 10:16	0.263	0.03	0.0293	No	0.2759	No
2/10/2023 10:17	0.254	0.032	0.0299	No	0.2742	No
2/10/2023 10:18	0.253	0.035	0.0303	No	0.272	No
2/10/2023 10:19	0.28	0.031	0.0301	No	0.2705	No
2/10/2023 10:20	0.284	0.025	0.0301	No	0.2689	No
2/10/2023 10:21	0.277	0.025	0.029	No	0.2699	No
2/10/2023 10:22	0.285	0.023	0.0285	No	0.2705	No
2/10/2023 10:23	0.275	0.026	0.0287	No	0.2707	No
2/10/2023 10:24	0.257	0.02	0.0279	No	0.2711	No
2/10/2023 10:25	0.249	0.028	0.0277	No	0.2705	No
2/10/2023 10:26	0.248	0.041	0.0283	No	0.2696	No
2/10/2023 10:27	0.249	0.012	0.0271	No	0.2677	No
2/10/2023 10:28	0.244	0.013	0.0261	No	0.2673	No
2/10/2023 10:29	0.249	0.016	0.0255	No	0.2649	No
2/10/2023 10:30	0.245	0.013	0.0247	No	0.2608	No
2/10/2023 10:31	0.258	0.012	0.0235	No	0.2605	No
2/10/2023 10:32	0.387	0.013	0.0222	No	0.2693	No
2/10/2023 10:33	0.339	0.012	0.0207	No	0.2751	No
2/10/2023 10:34	2.905	0.018	0.0198	No	0.4501	No
2/10/2023 10:35	0.537	0.051	0.0215	No	0.4669	No
2/10/2023 10:36	1.473	0.091	0.0259	No	0.5467	No
2/10/2023 10:37	0.859	0.046	0.0275	No	0.5849	No
2/10/2023 10:38	0.513	0.027	0.0275	No	0.6008	No
2/10/2023 10:39	0.835	0.052	0.0297	No	0.6393	No

Downwind Station						
Time	Instantaneous VOC (ppm)	Instantaneous Mass Conc. Total (mg/m <sup>3</sup> )	Mass Conc. Total mg/m <sup>3</sup> AVG 15m (mg/m <sup>3</sup> )	Dust Exceedance	VOC ppm AVG 15m (ppm)	VOC Exceedance
2/10/2023 10:40	0.477	0.02	0.0291	No	0.6545	No
2/10/2023 10:41	0.515	0.015	0.0274	No	0.6723	No
2/10/2023 10:42	0.484	0.011	0.0273	No	0.688	No
2/10/2023 10:43	0.448	0.015	0.0275	No	0.7016	No
2/10/2023 10:44	0.421	0.011	0.0271	No	0.7131	No
2/10/2023 10:45	0.413	0.01	0.0269	No	0.7243	No
2/10/2023 10:46	0.375	0.011	0.0269	No	0.7321	No
2/10/2023 10:47	0.455	0.008	0.0265	No	0.7366	No
2/10/2023 10:48	0.432	0.019	0.027	No	0.7428	No
2/10/2023 10:49	0.548	0.011	0.0265	No	0.5857	No
2/10/2023 10:50	0.41	0.01	0.0238	No	0.5772	No
2/10/2023 10:51	0.473	0.012	0.0185	No	0.5105	No
2/10/2023 10:52	0.323	0.014	0.0164	No	0.4748	No
2/10/2023 10:53	0.71	0.011	0.0153	No	0.4879	No
2/10/2023 10:54	0.519	0.009	0.0125	No	0.4669	No
2/10/2023 10:55	0.438	0.009	0.0117	No	0.4643	No
2/10/2023 10:56	0.36	0.016	0.0118	No	0.4539	No
2/10/2023 10:57	0.347	0.01	0.0117	No	0.4448	No
2/10/2023 10:58	0.501	0.01	0.0114	No	0.4483	No
2/10/2023 10:59	0.379	0.01	0.0113	No	0.4455	No
2/10/2023 11:00	0.423	0.009	0.0113	No	0.4462	No
2/10/2023 11:01	0.351	0.009	0.0111	No	0.4446	No
2/10/2023 11:02	0.457	0.008	0.0111	No	0.4447	No
2/10/2023 11:03	0.48	0.009	0.0105	No	0.4479	No
2/10/2023 11:04	0.338	0.02	0.0111	No	0.4339	No
2/10/2023 11:05	0.334	0.008	0.0109	No	0.4289	No
2/10/2023 11:06	0.379	0.007	0.0106	No	0.4226	No
2/10/2023 11:07	0.317	0.014	0.0106	No	0.4222	No
2/10/2023 11:08	0.371	0.006	0.0103	No	0.3996	No
2/10/2023 11:09	0.333	0.003	0.0099	No	0.3872	No
2/10/2023 11:10	0.289	0.003	0.0095	No	0.3773	No
2/10/2023 11:11	0.4	0.011	0.0091	No	0.3799	No
2/10/2023 11:12	0.346	0.006	0.0089	No	0.3799	No
2/10/2023 11:13	0.31	0.019	0.0095	No	0.3671	No
2/10/2023 11:14	0.357	0.017	0.0099	No	0.3657	No
2/10/2023 11:15	0.332	0.004	0.0096	No	0.3596	No
2/10/2023 11:16	0.346	0.014	0.0099	No	0.3593	No
2/10/2023 11:17	0.302	0.029	0.0113	No	0.3489	No
2/10/2023 11:18	0.355	0.027	0.0125	No	0.3406	No
2/10/2023 11:19	0.352	0.012	0.012	No	0.3415	No
2/10/2023 11:20	0.32	0.016	0.0125	No	0.3406	No
2/10/2023 11:21	0.373	0.009	0.0127	No	0.3402	No
2/10/2023 11:22	0.315	0.002	0.0119	No	0.3401	No
2/10/2023 11:23	0.389	0.003	0.0117	No	0.3413	No
2/10/2023 11:24	0.346	0.005	0.0118	No	0.3421	No
2/10/2023 11:25	0.389	0.008	0.0121	No	0.3488	No
2/10/2023 11:26	0.325	0.022	0.0129	No	0.3438	No
2/10/2023 11:27	0.362	0.02	0.0138	No	0.3449	No
2/10/2023 11:28	0.354	0.006	0.0129	No	0.3478	No
2/10/2023 11:29	0.318	0.023	0.0133	No	0.3452	No
2/10/2023 11:30	0.287	0.003	0.0133	No	0.3422	No
2/10/2023 11:31	0.337	0.012	0.0131	No	0.3416	No
2/10/2023 11:32	0.295	0.033	0.0134	No	0.3411	No
2/10/2023 11:33	0.337	0.014	0.0125	No	0.3399	No

**Downwind Station**

Time	Instantaneous VOC (ppm)	Instantaneous Mass Conc. Total (mg/m <sup>3</sup> )	Mass Conc. Total mg/m <sup>3</sup> AVG 15m (mg/m <sup>3</sup> )	Dust Exceedance	VOC ppm AVG 15m (ppm)	VOC Exceedance
2/10/2023 11:34	0.369	0.008	0.0123	No	0.3411	No
2/10/2023 11:35	0.308	0.002	0.0113	No	0.3403	No
2/10/2023 11:36	0.311	0.039	0.0133	No	0.3361	No
2/10/2023 11:37	0.274	0.009	0.0138	No	0.3334	No
2/10/2023 11:38	0.365	0.109	0.0209	No	0.3318	No
2/10/2023 11:39	0.305	0.024	0.0221	No	0.3291	No
2/10/2023 11:40	0.374	0.008	0.0221	No	0.3281	No
2/10/2023 11:41	0.305	0.016	0.0217	No	0.3267	No
2/10/2023 11:42	0.317	0.011	0.0211	No	0.3237	No
2/10/2023 11:43	0.291	0.014	0.0217	No	0.3195	No
2/10/2023 11:44	0.309	0.004	0.0204	No	0.3189	No
2/10/2023 11:45	0.296	0.004	0.0205	No	0.3195	No
2/10/2023 11:46	0.278	0.007	0.0201	No	0.3156	No
2/10/2023 11:47	0.255	0.017	0.0191	No	0.3129	No
2/10/2023 11:48	0.32	0.008	0.0187	No	0.3118	No
2/10/2023 11:49	0.303	0.007	0.0186	No	0.3074	No
2/10/2023 11:50	0.503	0.011	0.0192	No	0.3204	No
2/10/2023 11:51	0.303	0.035	0.0189	No	0.3199	No
2/10/2023 11:52	0.288	0.146	0.0281	No	0.3208	No
2/10/2023 11:53	0.313	0.02	0.0221	No	0.3173	No
2/10/2023 11:54	0.295	0.049	0.0238	No	0.3167	No
2/10/2023 11:55	0.408	0.045	0.0263	No	0.3189	No
2/10/2023 11:56	0.279	0.046	0.0283	No	0.3172	No
2/10/2023 11:57	0.261	0.012	0.0283	No	0.3135	No
2/10/2023 11:58	0.245	0.023	0.0289	No	0.3104	No
2/10/2023 11:59	0.386	0.034	0.0309	No	0.3155	No
2/10/2023 12:00	0.309	0.109	0.0379	No	0.3164	No
2/10/2023 12:01	0.324	0.008	0.038	No	0.3195	No
2/10/2023 12:02	0.258	0.008	0.0374	No	0.3197	No
2/10/2023 12:03	0.279	0.013	0.0377	No	0.3169	No
2/10/2023 12:04	0.279	0.012	0.0381	No	0.3153	No
2/10/2023 12:05	0.3	0.025	0.039	No	0.3018	No
2/10/2023 12:06	0.302	0.016	0.0377	No	0.3017	No
2/10/2023 12:07	0.263	0.007	0.0285	No	0.3001	No
2/10/2023 12:08	0.285	0.016	0.0282	No	0.2982	No
2/10/2023 12:09	0.259	0.006	0.0253	No	0.2958	No
2/10/2023 12:10	0.274	0.026	0.0241	No	0.2869	No
2/10/2023 12:11	0.274	0.007	0.0215	No	0.2865	No
2/10/2023 12:12	0.261	0.003	0.0209	No	0.2865	No
2/10/2023 12:13	0.299	0.014	0.0203	No	0.2901	No
2/10/2023 12:14	0.256	0.01	0.0187	No	0.2815	No
2/10/2023 12:15	0.283	0.01	0.0121	No	0.2797	No
2/10/2023 12:16	0.264	0.001	0.0116	No	0.2757	No
2/10/2023 12:17	0.268	0.002	0.0112	No	0.2764	No
2/10/2023 12:18	0.305	0.018	0.0115	No	0.2781	No
2/10/2023 12:19	0.291	0.004	0.011	No	0.2789	No
2/10/2023 12:20	0.379	0.004	0.0096	No	0.2842	No
2/10/2023 12:21	0.306	0.016	0.0096	No	0.2845	No
2/10/2023 12:22	0.277	0.095	0.0155	No	0.2854	No
2/10/2023 12:23	0.269	0.04	0.0171	No	0.2843	No
2/10/2023 12:24	0.295	0.059	0.0206	No	0.2867	No
2/10/2023 12:25	0.297	0.071	0.0236	No	0.2883	No
2/10/2023 12:26	0.297	0.109	0.0304	No	0.2898	No
2/10/2023 12:27	0.261	0.02	0.0315	No	0.2898	No

Downwind Station						
Time	Instantaneous VOC (ppm)	Instantaneous Mass Conc. Total (mg/m <sup>3</sup> )	Mass Conc. Total mg/m <sup>3</sup> AVG 15m (mg/m <sup>3</sup> )	Dust Exceedance	VOC ppm AVG 15m (ppm)	VOC Exceedance
2/10/2023 12:28	0.377	0.018	0.0318	No	0.295	No
2/10/2023 12:29	0.267	0.021	0.0325	No	0.2957	No
2/10/2023 12:30	0.368	0.024	0.0335	No	0.3014	No
2/10/2023 12:31	0.263	0.005	0.0337	No	0.3013	No
2/10/2023 12:32	0.305	0.011	0.0343	No	0.3038	No
2/10/2023 12:33	0.273	0.011	0.0339	No	0.3017	No
2/10/2023 12:34	0.282	0.019	0.0349	No	0.3011	No
2/10/2023 12:35	0.255	0.005	0.0349	No	0.2928	No
2/10/2023 12:36	0.295	0.002	0.034	No	0.2921	No
2/10/2023 12:37	0.265	0.01	0.0283	No	0.2913	No
2/10/2023 12:38	0.776	0.032	0.0278	No	0.3251	No
2/10/2023 12:39	0.339	0.007	0.0243	No	0.328	No
2/10/2023 12:40	0.356	0.007	0.0201	No	0.3319	No
2/10/2023 12:41	0.313	0.013	0.0137	No	0.333	No
2/10/2023 12:42	0.274	0.027	0.0141	No	0.3339	No
2/10/2023 12:43	0.889	0.015	0.0139	No	0.368	No
2/10/2023 12:44	1.979	0.023	0.0141	No	0.4821	No
2/10/2023 12:45	0.311	0.023	0.014	No	0.4783	No
2/10/2023 12:46	0.311	0.002	0.0138	No	0.4815	No
2/10/2023 12:47	0.342	0.011	0.0138	No	0.484	No
2/10/2023 12:48	0.323	0.009	0.0137	No	0.4873	No
2/10/2023 12:49	0.268	0.014	0.0133	No	0.4864	No
2/10/2023 12:50	0.33	0.013	0.0139	No	0.4914	No
2/10/2023 12:51	0.255	0.041	0.0165	No	0.4887	No
2/10/2023 12:52	0.296	0.018	0.017	No	0.4908	No
2/10/2023 12:53	0.303	0.155	0.0252	No	0.4593	No
2/10/2023 12:54	0.271	0.009	0.0253	No	0.4547	No
2/10/2023 12:55	0.277	0.018	0.0261	No	0.4495	No
2/10/2023 12:56	0.275	0.005	0.0255	No	0.4469	No
2/10/2023 12:57	0.27	0.023	0.0253	No	0.4467	No
2/10/2023 12:58	0.27	0.009	0.0249	No	0.4054	No
2/10/2023 12:59	0.257	0.005	0.0237	No	0.2906	No
2/10/2023 13:00	0.269	0.002	0.0223	No	0.2878	No
2/10/2023 13:01	0.263	0.004	0.0224	No	0.2846	No
2/10/2023 13:02	0.277	0	0.0217	No	0.2803	No
2/10/2023 13:03	0.302	0	0.0211	No	0.2789	No
2/10/2023 13:04	0.264	0	0.0201	No	0.2786	No
2/10/2023 13:05	0.259	0.002	0.0194	No	0.2739	No
2/10/2023 13:06	0.26	0.005	0.017	No	0.2742	No
2/10/2023 13:07	0.274	0.006	0.0162	No	0.2727	No
2/10/2023 13:08	0.291	0.004	0.0061	No	0.2719	No
2/10/2023 13:09	0.275	0.002	0.0057	No	0.2722	No
2/10/2023 13:10	0.279	0.004	0.0047	No	0.2723	No
2/10/2023 13:11	0.275	0.002	0.0045	No	0.2723	No
2/10/2023 13:12	0.267	0.347	0.0261	No	0.2721	No
2/10/2023 13:13	0.261	0.273	0.0437	No	0.2715	No
2/10/2023 13:14	0.278	0.053	0.0469	No	0.2729	No
2/10/2023 13:15	0.297	0.119	0.0547	No	0.2748	No
2/10/2023 13:16	0.347	1.203	0.1347	No	0.2804	No
2/10/2023 13:17	0.323	0.071	0.1394	No	0.2835	No
2/10/2023 13:18	0.281	0.029	0.1413	No	0.2821	No
2/10/2023 13:19	0.278	-0.002	0.1412	No	0.283	No
2/10/2023 13:20	0.463	0.01	0.1417	No	0.2966	No
2/10/2023 13:21	0.296	0.13	0.1501	Yes	0.299	No

**Downwind Station**

Time	Instantaneous VOC (ppm)	Instantaneous Mass Conc. Total (mg/m <sup>3</sup> )	Mass Conc. Total mg/m <sup>3</sup> AVG 15m (mg/m <sup>3</sup> )	Dust Exceedance	VOC ppm AVG 15m (ppm)	VOC Exceedance
2/10/2023 13:22	0.322	0.003	0.1499	No	0.3022	No
2/10/2023 13:23	0.276	0.282	0.1684	Yes	0.3012	No
2/10/2023 13:24	0.265	0.124	0.1765	Yes	0.3005	No
2/10/2023 13:25	0.296	0.069	0.1809	Yes	0.3017	No
2/10/2023 13:26	0.245	0.337	0.2032	Yes	0.2997	No
2/10/2023 13:27	0.291	0.108	0.1873	Yes	0.3013	No
2/10/2023 13:28	0.306	0.015	0.1701	Yes	0.3043	No
2/10/2023 13:29	0.263	0.675	0.2115	Yes	0.3033	No
2/10/2023 13:30	0.301	0.099	0.2102	Yes	0.3035	No
2/10/2023 13:31	0.244	0.026	0.1317	No	0.2967	No
2/10/2023 13:32	0.272	-0.001	0.1269	No	0.2933	No
2/10/2023 13:33	0.254	0.088	0.1309	No	0.2915	No
2/10/2023 13:34	0.242	0.029	0.1329	No	0.2891	No
2/10/2023 13:35	0.241	0.002	0.1324	No	0.2743	No
2/10/2023 13:36	0.272	0.025	0.1254	No	0.2727	No
2/10/2023 13:37	0.232	0	0.1252	No	0.2667	No
2/10/2023 13:38	0.247	0.021	0.1078	No	0.2647	No
2/10/2023 13:39	0.251	0.035	0.1019	No	0.2638	No
2/10/2023 13:40	0.253	0.003	0.0975	No	0.2609	No
2/10/2023 13:41	0.237	0.007	0.0755	No	0.2604	No
2/10/2023 13:42	0.34	0.015	0.0693	No	0.2637	No
2/10/2023 13:43	0.272	0.007	0.0687	No	0.2614	No
2/10/2023 13:44	0.263	0.006	0.0241	No	0.2614	No
2/10/2023 13:45	0.293	-0.002	0.0174	No	0.2609	No
2/10/2023 13:46	0.252	0	0.0157	No	0.2614	No
2/10/2023 13:47	0.245	-0.007	0.0153	No	0.2596	No
2/10/2023 13:48	0.226	-0.005	0.0091	No	0.2577	No
2/10/2023 13:49	0.232	0.001	0.0072	No	0.2571	No
2/10/2023 13:50	0.256	0.005	0.0074	No	0.2581	No
2/10/2023 13:51	0.282	-0.003	0.0055	No	0.2587	No
2/10/2023 13:52	0.255	0.003	0.0057	No	0.2603	No
2/10/2023 13:53	0.332	0.014	0.0053	No	0.2659	No
2/10/2023 13:54	0.483	0.005	0.0033	No	0.2814	No
2/10/2023 13:55	0.307	0.004	0.0033	No	0.285	No
2/10/2023 13:56	0.272	-0.008	0.0023	No	0.2873	No
2/10/2023 13:57	0.269	0.006	0.0017	No	0.2826	No
2/10/2023 13:58	0.316	0.001	0.0013	No	0.2855	No
2/10/2023 13:59	0.335	-0.004	0.0007	No	0.2903	No
2/10/2023 14:00	0.291	-0.002	0.0007	No	0.2902	No
2/10/2023 14:01	0.274	0.004	0.0009	No	0.2917	No
2/10/2023 14:02	0.271	-0.003	0.0012	No	0.2934	No
2/10/2023 14:03	0.269	0.016	0.0026	No	0.2963	No
2/10/2023 14:04	0.266	-0.002	0.0024	No	0.2985	No
2/10/2023 14:05	0.305	0.003	0.0023	No	0.3018	No
2/10/2023 14:06	0.268	-0.004	0.0022	No	0.3009	No
2/10/2023 14:07	0.265	-0.008	0.0015	No	0.3015	No

**Downwind Station**

Time	Instantaneous VOC (ppm)	Instantaneous Mass Conc. Total (mg/m <sup>3</sup> )	Mass Conc. Total mg/m <sup>3</sup> AVG 15m (mg/m <sup>3</sup> )	Dust Exceedance	VOC ppm AVG 15m (ppm)	VOC Exceedance
2/10/2023 14:08	0.282	-0.009	-0.0001	No	0.2982	No
2/10/2023 14:09	0.253	-0.005	-0.0007	No	0.2829	No
2/10/2023 14:10	0.271	0.076	0.0041	No	0.2805	No
2/10/2023 14:11	0.305	0.006	0.005	No	0.2827	No
2/10/2023 14:12	0.265	-0.008	0.0041	No	0.2824	No
2/10/2023 14:13	0.264	-0.009	0.0034	No	0.2789	No
2/10/2023 14:14	0.262	-0.007	0.0032	No	0.2741	No
2/10/2023 14:15	0.252	-0.008	0.0028	No	0.2715	No
2/10/2023 14:16	0.258	-0.006	0.0021	No	0.2704	No
2/10/2023 14:17	0.233	-0.005	0.002	No	0.2679	No
2/10/2023 14:18	0.283	-0.006	0.0005	No	0.2688	No
2/10/2023 14:19	0.276	-0.009	0.0001	No	0.2695	No
2/10/2023 14:20	0.263	-0.009	-0.0007	No	0.2667	No
2/10/2023 14:21	0.254	-0.009	-0.0011	No	0.2657	No
2/10/2023 14:22	0.255	-0.007	-0.001	No	0.2651	No
2/10/2023 14:23	0.262	-0.005	-0.0007	No	0.2637	No
2/10/2023 14:24	0.247	-0.005	-0.0007	No	0.2633	No
2/10/2023 14:25	0.351	-0.009	-0.0064	No	0.2687	No
2/10/2023 14:26	0.506	-0.003	-0.007	No	0.2821	No
2/10/2023 14:27	0.317	-0.008	-0.007	No	0.2855	No
2/10/2023 14:28	0.548	0.006	-0.006	No	0.3045	No
2/10/2023 14:29	0.509	0.003	-0.0053	No	0.3209	No
2/10/2023 14:30	0.333	-0.005	-0.0051	No	0.3263	No
2/10/2023 14:31	0.578	0.002	-0.0046	No	0.3477	No
2/10/2023 14:32	0.373	0.004	-0.004	No	0.357	No
2/10/2023 14:33	0.338	0.005	-0.0033	No	0.3607	No
2/10/2023 14:34	0.285	-0.002	-0.0028	No	0.3613	No
2/10/2023 14:35	0.255	-0.004	-0.0025	No	0.3607	No
2/10/2023 14:36	0.299	0.015	-0.0009	No	0.3637	No
2/10/2023 14:37	0.284	-0.005	-0.0007	No	0.3657	No
2/10/2023 14:38	0.392	-0.003	-0.0006	No	0.3743	No
2/10/2023 14:39	0.35	-0.001	-0.0003	No	0.3812	No
2/10/2023 14:40	0.408	0.001	0.0003	No	0.385	No
2/10/2023 14:41	0.261	-0.002	0.0004	No	0.3687	No
2/10/2023 14:42	0.257	-0.005	0.0006	No	0.3647	No
2/10/2023 14:43	0.249	-0.005	-0.0001	No	0.3447	No
2/10/2023 14:44	0.303	-0.003	-0.0005	No	0.331	No
2/10/2023 14:45	0.244	-0.006	-0.0006	No	0.3251	No
2/10/2023 14:46	0.254	-0.006	-0.0011	No	0.3035	No
2/10/2023 14:47	0.248	-0.009	-0.002	No	0.2951	No
2/10/2023 14:48	0.294	-0.008	-0.0029	No	0.2922	No
2/10/2023 14:49	0.233	-0.006	-0.0031	No	0.2887	No
2/10/2023 14:50	0.255	-0.005	-0.0032	No	0.2887	No
2/10/2023 14:51	0.278	0.002	-0.0041	No	0.2873	No
2/10/2023 14:52	0.234	-0.003	-0.0039	No	0.284	No
2/10/2023 14:53	0.22	-0.001	-0.0038	No	0.2725	No
2/10/2023 14:54	0.253	-0.005	-0.0041	No	0.2661	No
2/10/2023 14:55	0.265	-0.004	-0.0044	No	0.2565	No
2/10/2023 14:56	0.264	-0.003	-0.0045	No	0.2567	No
2/10/2023 14:57	0.235	-0.002	-0.0043	No	0.2553	No
2/10/2023 14:58	0.269	-0.005	-0.0043	No	0.2566	No

**Downwind Station**

Time	Instantaneous VOC (ppm)	Instantaneous Mass Conc. Total (mg/m <sup>3</sup> )	Mass Conc. Total mg/m <sup>3</sup> AVG 15m (mg/m <sup>3</sup> )	Dust Exceedance	VOC ppm AVG 15m (ppm)	VOC Exceedance
2/10/2023 14:59	0.238	-0.002	-0.0042	No	0.2523	No
2/10/2023 15:00	0.257	-0.004	-0.0041	No	0.2531	No
2/10/2023 15:01	0.22	-0.003	-0.0039	No	0.2509	No
2/10/2023 15:02	0.261	0.001	-0.0032	No	0.2517	No
2/10/2023 15:03	0.282	0.002	-0.0025	No	0.2509	No
2/10/2023 15:04	0.263	0.031	-0.0001	No	0.2529	No
2/10/2023 15:05	0.253	0.014	0.0012	No	0.2528	No
2/10/2023 15:06	0.256	0.016	0.0021	No	0.2513	No
2/10/2023 15:07	0.268	0.003	0.0025	No	0.2536	No
2/10/2023 15:08	0.227	0.019	0.0039	No	0.2541	No
2/10/2023 15:09	0.251	0.039	0.0068	No	0.2539	No
2/10/2023 15:10	0.238	0.011	0.0078	No	0.2521	No
2/10/2023 15:11	0.232	-0.001	0.0079	No	0.25	No
2/10/2023 15:12	0.282	0.052	0.0115	No	0.2531	No
2/10/2023 15:13	0.263	0.007	0.0123	No	0.2527	No
2/10/2023 15:14	0.299	0.008	0.013	No	0.2568	No
2/10/2023 15:15	0.227	0.032	0.0154	No	0.2548	No
2/10/2023 15:16	0.257	0.011	0.0163	No	0.2573	No
2/10/2023 15:17	0.241	0.02	0.0176	No	0.2559	No
2/10/2023 15:18	0.228	0.018	0.0187	No	0.2523	No
2/10/2023 15:19	0.224	0.005	0.0169	No	0.2497	No
2/10/2023 15:20	0.244	0.032	0.0181	No	0.2491	No
2/10/2023 15:21	0.246	0.043	0.0199	No	0.2485	No
2/10/2023 15:22	0.251	0.025	0.0214	No	0.2473	No
2/10/2023 15:23	0.239	0.013	0.021	No	0.2481	No
2/10/2023 15:24	0.246	0.02	0.0197	No	0.2478	No
2/10/2023 15:25	0.253	0.022	0.0205	No	0.2488	No
2/10/2023 15:26	0.281	0.019	0.0218	No	0.2521	No
2/10/2023 15:27	11.219	0.032	0.0205	No	0.9812	No
2/10/2023 15:28	1.959	0.005	0.0203	No	1.0943	No
2/10/2023 15:29	1.206	0.018	0.021	No	1.1547	No
2/10/2023 15:30	0.366	0.016	0.0199	No	1.164	No
2/10/2023 15:31	0.315	0.035	0.0215	No	1.1679	No
2/10/2023 15:32	0.433	0.012	0.021	No	1.1807	No
2/10/2023 15:33	0.296	0.025	0.0215	No	1.1852	No
2/10/2023 15:34	0.29	0.005	0.0215	No	1.1896	No