



Environmental, Planning, and Engineering Consultants

440 Park Avenue South
7th Floor
New York, NY 10016
tel: 212 696-0670
fax: 212 213-3191
www.akrf.com

November 22, 2021

Ms. Meghan Medwid
New York State Department of Environmental Conservation (NYSDEC)
Division of Environmental Remediation
625 Broadway, 12th Floor
Albany, New York, 12233-7017

**Re: Pre-Design Investigation Work Plan (PDIWP)
La Central Phase II, Bronx NY
Brownfield Cleanup Program (BCP) Site No. C203143**

Dear Ms. Medwid:

This letter is intended to provide a scope of work for conducting the pre-design investigation (PDI) at the La Central Phase II project site located in the Bronx, New York (the "Site"). AKRF conducted a Remedial Investigation (RI) at the Site in May 2020, and the findings were reported in a Remedial Investigation Report (RIR) dated September 2021. The RI included the collection of soil, groundwater and soil vapor samples across the Site. As requested by NYSDEC, a second round of groundwater samples will be collected as part of the PDI from the monitoring wells installed at the Site during the RI. The results of the PDI will be used to determine whether groundwater treatment will be needed as part of the Remedial Action (RA).

Pre-Design Investigation Work Plan (PDIWP) - Scope of Work

Groundwater samples will be collected from the nine (9) monitoring wells (RI-MW-01 through RI-MW-09) previously installed at the Site during the RI. A figure of the proposed sample locations is attached. The samples will be collected in accordance with Environmental Protection Agency's (EPA) low-flow sampling protocols and the NYSDEC's *Sampling, Analysis, and Assessment of Per- and Polyfluoroalkyl Substances (PFAS)* guidance dated June 2021. Prior to sampling, an electronic interface meter will be used to check for and measure water levels, and a bailer will be used to measure the thickness of any separate phase product (if noted). The purge water will be monitored for turbidity and water quality indicators [i.e., pH, dissolved oxygen, oxidation-reduction potential (ORP), temperature, and specific conductivity] with measurements collected approximately every five minutes. The criteria for stabilization will be three successive readings within $\pm 10\%$ for pH, temperature, and specific conductivity.

The samples will be analyzed for volatile organic compounds (VOCs) by EPA Method 8260, semi-volatile organic compounds (SVOCs) by EPA Method 8270, polychlorinated biphenyls (PCBs) by EPA Method 8082, pesticides by EPA Method 8081, and target analyte list (TAL) metals (total and dissolved) by EPA Method 6000/7000 series, 1,4-dioxane by EPA Method 8270D Selective Ion Monitoring (SIM), and per- and polyfluoroalkyl substances PFAS by EPA Method 537 (modified). In addition, one blind duplicate,

field blank, a trip blank and matrix spike/matrix spike duplicate (MS/MSD) sample will also be collected for quality assurance/quality control (QA/QC) purposes. The QA/QC samples will be analyzed for the same analytes as the samples with the exception of the trip blank, which will be analyzed for VOCs only. The samples collected for the analysis of dissolved metals will be filtered in the field. The analytical data will be reviewed by a third-party validator and a data usability summary report (DUSR) will be prepared to document the usability and validity of the data. All work will be implemented in accordance with the Quality Assurance Protection Plan (QAPP) and the Site-specific Health and Safety Plan (HASP) included in the draft Remedial Action Work Plan (RAWP) dated October 2021.

Reporting

Upon completion of all field work and receipt of laboratory analytical results, the findings will be submitted to NYSDEC for review. The analytical results will be compared to the RI findings and will be used to discuss conclusions and recommendations drawn from the results on whether groundwater treatment and/or post-remedial monitoring will be needed. All analytical data will be submitted in electronic data deliverable (EDD) format via EQuIS™.

Please contact me at (646) 388-9529 or aschwendt@akrf.com if you have any questions or comments.

Sincerely,
AKRF, Inc.

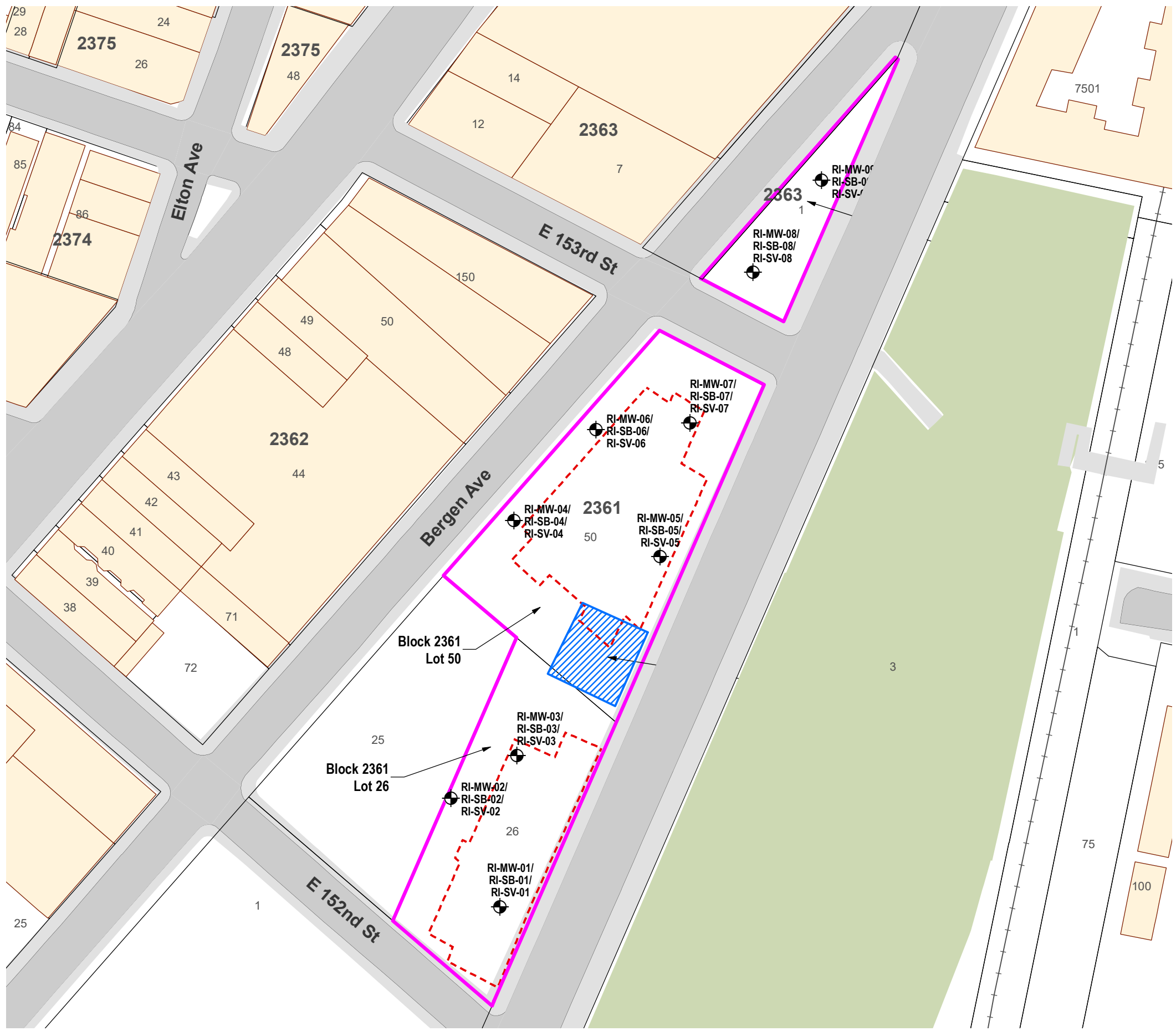


Axel Schwendt
Vice President






cc: Ashutosh Sharma – AKRF, Inc.

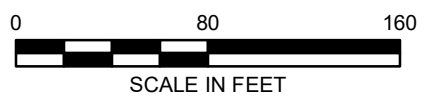
FIGURE

© 2021 AKRF. W:\Projects\200166 - LA CENTRAL PHASE 2\Technical\GIS and Graphics\SAR\PI\DW_Sampling\200166 Figure 1 Groundwater Sample Locations.mxd 11/22/2021 11:31:34 AM iszalus



LEGEND

-  PROJECT SITE BOUNDARY
-  LOT BOUNDARY AND TAX LOT NUMBER
- 2361** BLOCK NUMBER
-  EXISTING BUILDING
-  PROPOSED BUILDING
-  EXISTING MONITORING WELL LOCATION



Map Source:
NYCDOP (NYC Dept. of City Planning) GIS database

DATE	11/22/2021
PROJECT NO.	200166
FIGURE	1