

SUBMITTAL

Submittal No. 46

CONTRACTOR: N.W.E.C. & C. PROJECT #: D004815

ADDRESS: 3553 Crittenden Road PROJECT: Wurlitzer Area B Project
Crittenden, NY 14038 DATE: 11/12/04

PHONE/FAX: (716)937-6527 / (716) 937-9360

TYPE OF SUBMITTAL: DATE OF SUBMITTAL: 11/12/04

(Check One)

Product Data

RESUBMITTAL: _____

Shop Drawing

Other Surveyor Field Notes and Vol. Calculations

PRODUCT IDENTIFICATION:

Spec. Section No. _____

Part/Paragraph _____

Contract Dwg. No. _____

Detail Ref. _____

Product Name _____

Manufacturer _____

CONTRACTOR APPROVAL:

BY:  _____

Date: 11/12/04

COMMENTS:

SHOP DRAWING:

No Exceptions Taken

Revise & Resubmit

Resubmitted

INITIAL-EXCAVATION.txt

Cut	Site volume	Table: Unadjusted	Fill	Net	Method
cu.yds			cu.yds	cu.yds	

Site: Initial Survey to Excavation Survey

Stratum: initial-excavation	initial	excavation	limits	
10832	196	10637	(C) Composite	

Excavation-Final Volume.txt

Site volume Table: Unadjusted
Cut Fill Net
cu.yds cu.yds cu.yds Method

Site: Excavation Survey to Final Survey

Stratum: excavation-final excavation limits final survey
205 3177 2972 (F) Composite



Foit-Albert Associates
Architecture, Engineering and Surveying, P.C.

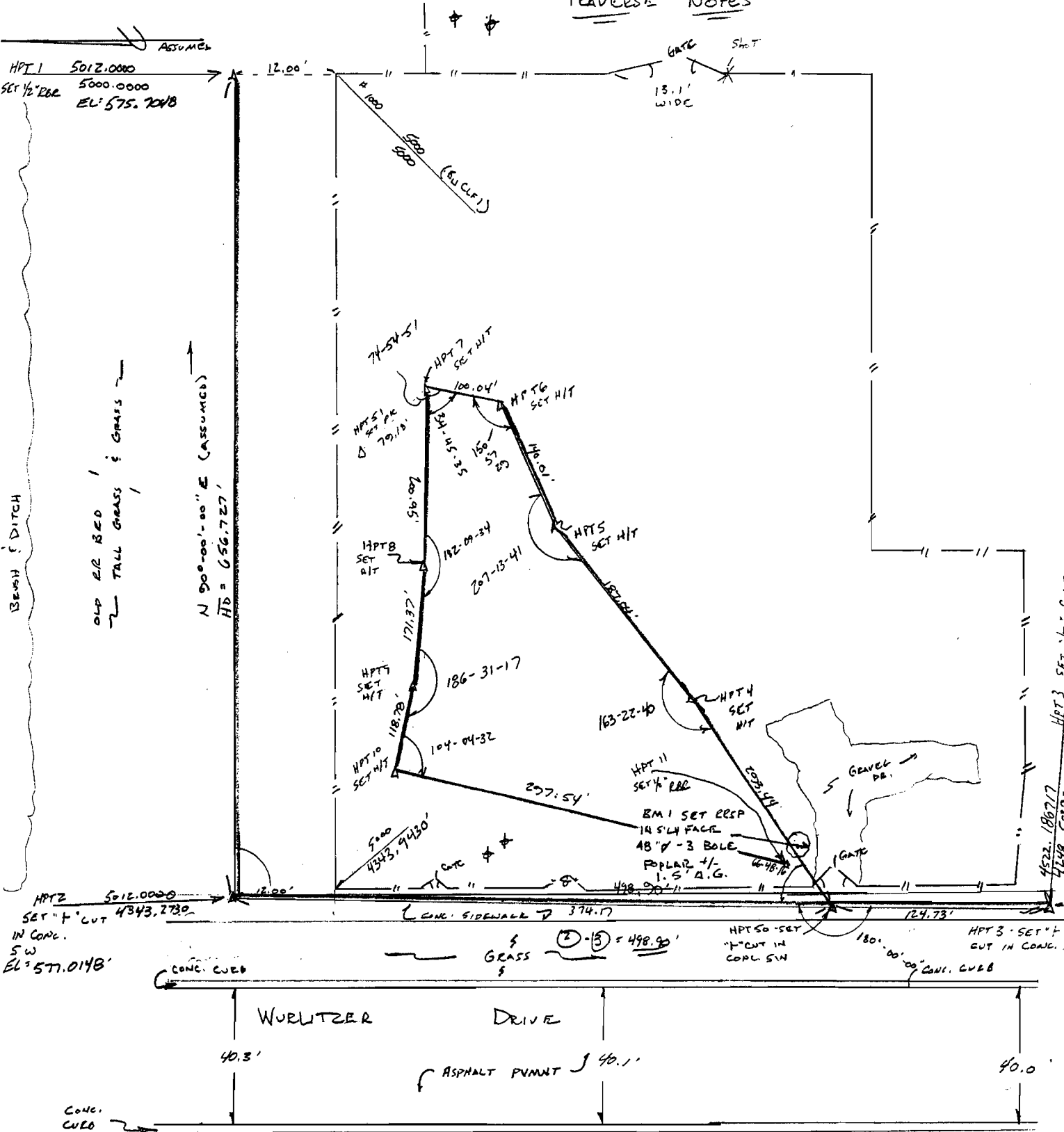
CALCULATED BY GG/RD DATE 8/16/04

CHECKED BY _____ DATE _____

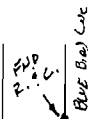
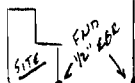
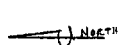
SCALE (NTS)

JOB Wurlitzer Park
SHEET NO. 1 OF 1

TRAVERSE NOTES



Prop. Con. Detail



MW - SHOT TOP OF LAP
-.03 FROM ELEV FOR



CALCULATED BY GG/RD DATE 8/16/04
 CHECKED BY BOOF-SUN DATE _____
 SCALE (N.T.S.)

JOB Wuerlitzer Park
 SHEET NO. 1 OF 2

LEVEL NOTES

Loop 1: ELEVATE HPT 1 & N'LY FNC. COR'S.

STA	BS (+)	HI	FS (-)	ELEV.	ADJ. ELEV.	DESCRIPTION
BM				575.88' (FIXED)	575.88' (FIXED)	RISER (TOP) MONITOR WELL GW-5
	4.237'	580.117'				
FNC			3.120'	576.997'	(576.9970')	NW FNC COR @ GRADE
TP1			5.189'	574.928'	(574.9276')	TP1
	6.367'					
		581.295'				
TP2			5.868	575.427'	(575.4262')	TP2
	4.286	579.7122' 579.713				
FNC			5.405'	574.308'	(574.3072')	NE FNC COR @ GRADE
TP3			4.007'	575.706'	(575.7048')	HPT 1 - SET 1/2" RBR
	5.497	581.2018' 581.203' 581.203'				
TP4			6.276'	574.927'	(574.9254')	TP4
	4.999'					
		579.926'				
TP5			4.044	575.882' ✓	(575.8800) ✓	RISER (TOP) MW, GW-5

~~LOOP LI ELEVATE HPT'S 2, 50, & 3 AND ELEVATE BM~~

$\Delta EL: +0.002'$

$ADD/TURN = \frac{0.002'}{5} = -0.0004'/TURN$



CALCULATED BY GG/RS DATE 8/16/09

JOB Wurlitzer Park

CHECKED BY 80°F - 50W DATE _____

SHEET NO. 2 OF 2

SCALE (NTS)

LEVEL NOTES:

ELEVATE HPT'S: 2, 50, & 3, AND ELEVATE BM 1

STA	BSC'D	HI	FSC'D	ELEV.	ADJ. ELEV.	DESC.
BM	5.243'	581.123'		575.88'		MN GW-5
TP1	2.443'	579.458	4.108'	577.015	577.0148'	HPT 2 - SET "T" CUT IN CONC. SW.
TP2	4.546'	578.150'	5.854'	573.604'	573.6037'	HPT 50 - " " " " "
TP3	3.337'	578.425 ^{5'}	3.062	575.088'	575.0875'	BM 1 - SET RASP 5'LY FACE 48" 3 BOLE POPLAR +/- 1.5' A.G.
TP4	4.374'	578.439'	4.360'	574.065'	574.0643'	HPT 3 - SET "T" CUT IN CONC. SW.
TP5	6.640'	581.080'	3.999'	574.440'	574.4392'	TP5
TP6			5.199'	575.881'	575.88'	BM MW, GW-5

$\Delta_{EL} = +0.001'$

$ADJ./TURN = \frac{0.001'}{6} = -0.000166667'/TURN$



CALCULATED BY GG/RD DATE 8/16/04

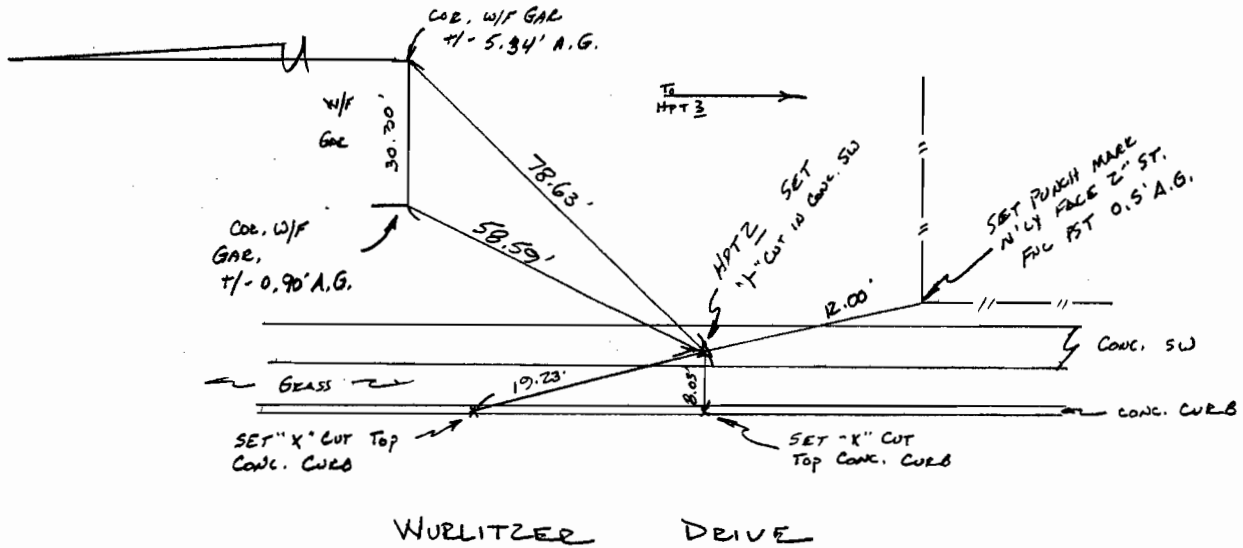
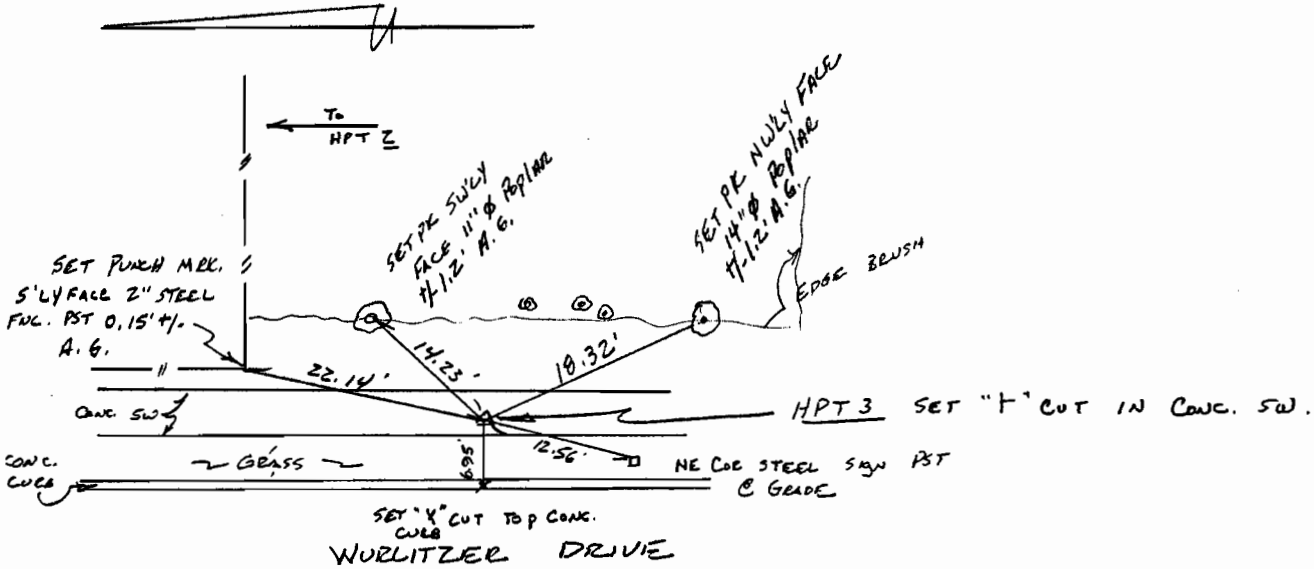
JOB Wurlitzer Park

CHECKED BY BOF-SW DATE _____

SHEET NO. 1 OF 1

SCALE (NTS)

SWING TIES



FOIT-ALBERT ASSOCIATES DATA COLLECTION SETUP

PROJECT: Wuelitsee Park

CONTROL FILE: Wuelitsee

P.L.N.: _____

PROJECT NO.: _____

Date	Field Crew	Raw Data File	Coordinate File	Point Numbers Used	Description
8/16/04	GG/RD	Wuelitsee		1 -	Control File
8/16/04	" / "	Wuelitsee A		400	500 points per p.k. 841
8/17/04	" / "	Wuelitsee B		500-512	100 HAZ, Area Delimitation.
8/18/04	" / "	Wuelitsee C		1000-1320	TOPO
8/19/04	" / "	" D		1325-1939	"
10/4/04	GG/RD	0405600 A		1945-2956	"
10/6/04	GG/RD	0405600 B		2960-3327	P.T. Volumes
10/17/04	" / MT	" C		3330 - 3586	" 'used 0405600 A raw control file
				3590 - 3931	As. Built

g:\survey\forms\data collection setup.x

1 - 99 TRAVERSE
50 - 99 WING POINTS
100 - 499 RECORD PLAN ALIGNMENT

500 - 999 NEW PROJECT CENTERLINE
1000 - TOPO

AS BUILT
EXCV
TOPO



CALCULATED BY GG/RD DATE 8/17/04

JOB Wuelitzee Park

CHECKED BY 80° F - SUN DATE _____

SHEET NO. 1 OF 1

SCALE _____

1321 LAST PT#

023 SET PT # 4, 5

RAW DATA FILE = Wuelitzee.B
 CONTROL FILE = Wuelitzee
 START POINT = 1000

shot #

Comment

100 - DELETE DUMMY ROAD. ✓

1000 > STORE POINTS TO FENCE E.N. SIDE OF SITE

1001

1006 - RH = 6.06 NOT 4.00 SEC ✓

✓ *NOTE CUB1 = W. FACE Top Curb of 0.5' WIDE CONC. CURB

✓ 1061 - DS W - 12" RCP 3.00 INV. 509.63

Lim = 572.63 SE - 6" PVC 2.34 INV. 570.29

NE - 6" PVC 2.31 INV. 570.32

E - 12" RCP 3.02 INV. 509.61

✓ 1153 - CLF1 CONED SOUTH

NOTE: FROM PT # 1313 NEED SEC ALONG WEST SIDE OF FENCE.

END 1320



Foit-Albert Associates
Architecture, Engineering and Surveying, P.C.

CALCULATED BY GG/ED DATE 8/18/04

CHECKED BY _____ DATE _____

JOB Worlitzee Park

SHEET NO. 1 OF 1

SCALE _____

HPTS START 26

RAW DATA File: WorlitzeeC
Control File: Worlitzee
START Point: 1325

~~1934~~
LAST PT # 1934

Shot #1

Connect

~~460 - detect downy 6000~~

1325 - STORE point #1160 From "B" File For File 4614.458408/4718, 289285

1610 - B ELB5 RUNS off of THE 573.540279

ELB4 LINE

1844 - ELB3 NOT B ELB3 ✓

1860 -

1861 } ELB1 NOT ELB2 ✓

1862

1916 - EXTEND ← 13.1' FROM THIS SOUTH TO CREATE FNC COR B CORN

✓ 1920 - MI. GATE 13' WIDE HEADING North FROM THIS SHOT.

FOIT-ALBERT ASSOCIATES

PROJECT Wheatfree Park
 P.I.N. _____
 DATE 8/19/04

P.C. GG
 CREW: INST. Ed
 ROD GG

WEATHER: 70° F - CLOUDY, LT RAIN
 SHEET: 1 OF 1

~~2181~~
 2915

RAW DATA FILE: Wheatfree D
 CONTROL FILE: Wheatfree
 START POINT: 1945

LAST PT #
 2956

POINT NO.	COMMENT
✓ 1945	- store point to continue fnc
✓ 1945	CLF1 CONNECT TO PT # 1000
✓ 2049	ELB5 - TIES INTO ELB2
✓ 2076	ELB5 - TIES INTO ELB1
* 2141	ELB 101 - NOT 100 ELB 100 ✓
* 2142	DCH 101 - NOT 100 DCH 100 ✓
✓ 2192	ELB6 - TIES INTO IT'S SELF @ THIS PT
* 2246	RH = 6.9 NOT 69.0 ✓
* 2247	RH = 6.9 NOT " ✓
✓ 2542	B ELB1 - STARTS @ FNC LINE
✓ 2544	B ELB2 - " " " "

FOIT-ALBERT ASSOCIATES

PROJECT 04056.00

P.C. GG

WEATHER: 60°F - SUN.

P.I.N. _____

CREW: INST. BZ

DATE 10/4/04

ROD GG

SHEET: 1 OF 1

RAW DATA FILE: 0405600A

CONTROL FILE: Wuelitree

START POINT: 2960 - 3327

POINT NO.	COMMENT
100	- DELETE DUMMY COORD ✓
	* NOTE: MONITOR WELLS NEAR HPTZ HAVE BEEN REMOVED.
	498
	3317 DH C3



Foit-Albert Associates
 Architecture, Engineering and Surveying, P.C.

RAW SURVEY

40°

B. BERTSELMAN

JOB 04056.00

CALCULATED BY _____ DATE 10-19-04

CHECKED BY _____ DATE _____

SHEET NO. _____ OF _____

SCALE _____

RAW 04056.00

SHOT #

COMMENT

359A ✓

DELETE

NOTE - ELB 8 RINGS 17 3" - 15" TREES

NOTE; MLE MLZ = Limits of EXCAVATION WORK

				Symb. 1
—	CHK	\$*	PNT - Final Survey	\$
—	DRV*		" " "	F. S. DRV
X	ELB*		" " "	
—	ML*		" " "	
	SEL		" " "	
	TRE	\$+	" " "	TRE Fms.

Drawing Name: final survey

Project Name: 04056-00

Project Path: I:\SPROJ\EngSurvey\04056.00 Natures Way-Wurlitzer Site\Project\04056-00\

Username: mikep

Number	Northing	Easting	Elevation	Raw Desc	Full Desc
1	5012.0000	5000.0000	575.705	HPT 1	HPT 1
2	5012.0000	4343.2730	577.015	HPT 2	HPT 2
3	4522.1867	4248.5040	574.064	HPT 3	HPT 3
4	4706.8797	4558.9627	575.912	HPT 4	HPT 4
5	4797.1776	4722.7621	577.003	HPT 5	HPT 5
6	4801.1806	4862.7184	577.144	HPT 6	HPT 6
7	4852.2240	4948.7537	576.272	HPT 7	HPT 7
8	4866.5211	4748.3165	576.260	HPT 8	HPT 8
9	4885.1471	4577.9601	574.395	HPT 9	HPT 9
10	4911.3846	4462.1133	576.291	HPT 10	HPT 10
11	4645.8881	4327.7850	572.943	HPT 11	HPT 11
50	4644.6441	4272.1952	573.604	HPT 50	HPT 50
51	4907.4568	4892.0249	574.939	HPT 51	HPT 51
52	4655.5593	4219.6035	573.446	HPT 52	HPT 52
53	4650.9914	4346.5479	573.487	HPT 53	HPT 53
54	4801.2386	4469.3513	572.130	HPT 54	HPT 54
55	4806.0066	4862.7174	572.755	HPT 55	HPT 55
56	4909.5017	4859.2875	572.915	HPT 56	HPT 56
70	4782.5426	4600.8696	573.732	HPT 70	HPT 70
500	4800.0000	4525.0000	0.000		
501	4700.0000	4525.0000	0.000		
502	4675.0000	4500.0000	0.000		
503	4675.0000	4450.0000	0.000		
504	4700.0000	4425.0000	0.000		
505	4750.0000	4475.0000	0.000		
506	4800.0000	4425.0000	0.000		
507	4825.0000	4450.0000	0.000		
508	4825.0000	4500.0000	0.000		
509	4945.0000	4520.0000	0.000		
510	4925.0000	4500.0000	0.000		
511	4950.0000	4475.0000	0.000		
512	4975.0000	4500.0000	0.000		
525	4925.0000	4900.0000	0.000		
526	4900.0000	4925.0000	0.000		
527	4875.0000	4950.0000	0.000		
528	4875.0000	4997.0000	0.000		
529	4850.0000	4997.0000	0.000		
530	4825.0000	4950.0000	0.000		
531	4800.0000	4950.0000	0.000		
532	4750.0000	4950.0000	0.000		
533	4725.0000	4950.0000	0.000		
534	4700.0000	4925.0000	0.000		
535	4675.0000	4900.0000	0.000		
536	4675.0000	4875.0000	0.000		
537	4700.0000	4875.0000	0.000		
538	4750.0000	4875.0000	0.000		
539	4775.0000	4850.0000	0.000		
540	4775.0000	4800.0000	0.000		
541	4775.0000	4750.0000	0.000		
542	4775.0000	4700.0000	0.000		
543	4775.0000	4650.0000	0.000		
544	4775.0000	4625.0000	0.000		
545	4750.0000	4600.0000	0.000		
546	4700.0000	4600.0000	0.000		
547	4675.0000	4600.0000	0.000		
548	4675.0000	4550.0000	0.000		
549	4675.0000	4500.0000	0.000		
550	4675.0000	4450.0000	0.000		
551	4700.0000	4425.0000	0.000		

Number	Northing	Easting	Elevation	Raw Desc	Full Desc
552	4725.0000	4425.0000	0.000		
553	4750.0000	4400.0000	0.000		
554	4775.0000	4375.0000	0.000		
555	4800.0000	4375.0000	0.000		
556	4850.0000	4375.0000	0.000		
557	4900.0000	4375.0000	0.000		
558	4950.0000	4375.0000	0.000		
559	4975.0000	4400.0000	0.000		
560	4975.0000	4450.0000	0.000		
561	4975.0000	4500.0000	0.000		
562	4950.0000	4516.6667	0.000		
563	4900.0000	4550.0000	0.000		
564	4875.0000	4575.0000	0.000		
565	4875.0000	4600.0000	0.000		
566	4850.0000	4650.0000	0.000		
567	4850.0000	4675.0000	0.000		
568	4900.0000	4675.0000	0.000		
569	4925.0000	4675.0000	0.000		
570	4925.0000	4700.0000	0.000		
571	4925.0000	4725.0000	0.000		
572	4900.0000	4725.0000	0.000		
573	4850.0000	4725.0000	0.000		
574	4850.0000	4750.0000	0.000		
575	4850.0000	4775.0000	0.000		
576	4900.0000	4775.0000	0.000		
577	4925.0000	4800.0000	0.000		
578	4925.0000	4850.0000	0.000		
1000	5000.0000	5000.0000	0.000	CLF	CLF
1001	5000.0000	4343.9430	0.000	CLF	CLF
1002	5012.0032	4343.2853	576.961	CHK HPT 2	CHK HPT 2
1003	4910.7499	5048.2119	574.128	SEL	SEL
1004	4911.0922	5047.9313	576.071	MW GW4	MW GW4
1005	4907.7213	5043.6671	575.828	MW GW4S	MW GW4S
1006	4907.5992	5043.7146	573.901	SEL	SEL
1007	5005.7565	5000.0760	574.859	SEL	SEL
1008	5000.0026	4949.7902	573.968	SEL	SEL
1009	5005.2155	4949.7641	574.576	SEL	SEL
1010	5000.0685	4900.0750	573.860	SEL	SEL
1011	5006.2760	4899.8327	574.443	SEL	SEL
1012	4999.9267	4850.2612	574.387	SEL	SEL
1013	5005.9064	4850.1312	575.004	SEL	SEL
1014	4999.6922	4800.4214	575.373	SEL	SEL
1015	5004.7594	4800.0223	575.963	SEL	SEL
1016	4999.7569	4751.0816	575.252	SEL	SEL
1017	5005.4110	4751.5961	575.602	SEL	SEL
1018	5000.2710	4701.6244	574.140	SEL	SEL
1019	5006.0265	4701.3453	574.448	SEL	SEL
1020	4999.8284	4651.8860	574.081	SEL	SEL
1021	5005.6569	4651.9769	574.338	SEL	SEL
1022	5000.1364	4601.9658	574.501	SEL	SEL
1023	5005.7771	4601.9077	574.651	SEL	SEL
1024	5000.0984	4552.2152	574.342	SEL	SEL
1025	5005.8264	4552.5981	574.738	SEL	SEL
1026	5000.3291	4502.3039	574.107	SEL	SEL
1027	5007.7594	4502.4642	574.776	SEL	SEL
1028	5012.0064	4343.2873	577.023	CHK HPT 2	CHK HPT 2
1029	4522.1662	4248.4976	574.044	CHK HPT 3	CHK HPT 3
1030	5000.3596	4450.8373	574.304	SEL	SEL
1031	5006.2163	4451.1114	574.795	SEL	SEL
1032	5000.2007	4401.9010	574.887	SEL	SEL
1033	5005.4004	4401.5412	575.187	SEL	SEL
1034	5000.1934	4352.1218	576.010	SEL	SEL
1035	5006.0853	4352.0338	576.002	SEL	SEL

Number	Northing	Easting	Elevation	Raw Desc	Full Desc
1036	5010.6509	4346.1920	576.751	SEL	SEL
1037	5005.9474	4334.0237	577.206	CUB1	CUB1
1038	5005.7539	4339.5161	577.125	SWC1	SWC1
1039	5005.4225	4343.4402	577.125	SWC2	SWC2
1040	4980.8431	4338.7832	576.833	SWC2	SWC2
1041	4981.6227	4334.9766	576.795	SWC1	SWC1
1042	4984.4159	4330.3768	576.792	CUB1	CUB1
1043	4960.6585	4335.7856	576.327	MI GATE	MI GATE
1044	4950.4079	4333.7802	576.249	MI GATE	MI GATE
1045	4950.7900	4333.8832	576.357		
1046	4901.8241	4324.4974	575.681	SEL	SEL
1047	4901.8241	4324.4974	575.680	CLF1	CLF1
1048	4892.4360	4312.8854	575.228	CUB1	CUB1
1049	4891.1632	4317.4946	575.127	SWC1	SWC1
1050	4890.2012	4321.3884	575.319	SWC2	SWC2
1051	4890.0176	4324.4406	575.215	FH	FH
1052	4891.3317	4327.7014	575.298	CLF1	CLF1
1053	4883.0136	4320.9024	575.331	CLF1	CLF1
1054	4853.0669	4314.6597	575.049	SEL	SEL
1055	4803.8653	4305.4381	574.323	SEL	SEL
1056	4753.6226	4295.8130	573.810	SEL	SEL
1057	4704.8062	4286.3657	573.577	SEL	SEL
1058	4655.2866	4276.6054	573.612	SEL	SEL
1059	4655.2883	4276.6290	573.607	CLF1	CLF1
1060	4635.9199	4273.2255	573.537	CLF1	CLF1
1061	4606.5463	4267.5185	573.823	SEL	SEL
1062	4557.6614	4258.0634	573.968	SEL	SEL
1063	4543.3264	4255.3444	574.037	CLF1	CLF1
1064	4533.2750	4252.6102	573.984	SWC2	SWC2
1065	4533.6708	4248.5805	573.920	SWC1	SWC1
1066	4534.3147	4243.7984	573.873	CUB1	CUB1
1067	4711.9822	4276.5210	572.632	DS	DS
1068	4962.1955	4362.6242	573.936	SEL	SEL
1069	4962.7132	4362.3901	576.086	MW GW5	MW GW5
1070	4970.3672	4363.4547	575.845	MW GW5S	MW GW5S
1071	4969.9195	4363.6891	573.609	SEL	SEL
1072	4978.1869	4342.0259	576.314	TJB	TJB
1073	4522.1652	4248.5023	574.051	CHK HPT 3	CHK HPT 3
1074	5011.9510	4343.2654	577.216	CHK HPT 2	CHK HPT 2
1075	5011.9801	4343.2716	576.995	CHK HPT 2	CHK HPT 2
1076	3904.0707	4137.0553	574.003	R&C	R&C
1077	4307.0959	4215.2393	573.637	RBR	RBR
1078	4482.8884	4248.0263	574.280	RBR	RBR
1079	4480.5046	4256.7766	574.581	SEW	SEW
1080	4480.1096	4256.9471	562.713		
1081	4480.8963	4257.3364	562.745	PIV 12PVC N	PIV 12PVC N
1082	5011.9782	4343.2762	577.000	CHK HPT 2	CHK HPT 2
1083	5011.9520	4343.2656	577.018	CHK HPT 2	CHK HPT 2
1084	4639.0427	4273.1838	573.609	DRV1	DRV1
1085	4637.1166	4301.5169	573.231	DRV1	DRV1
1086	4632.1896	4317.9651	572.972	DRV1	DRV1
1087	4641.8541	4316.7683	573.161	SEL	SEL
1088	4646.9222	4275.1754	573.582	SEL	SEL
1089	4654.6140	4276.7957	573.592	DRV2	DRV2
1090	4651.7326	4299.1078	573.557	DRV2	DRV2
1091	4648.1890	4320.5670	573.190	DRV2	DRV2
1092	4648.1892	4320.5700	573.190	SEL	SEL
1093	4655.4274	4343.5689	574.252	TRE 48	48
1094	4653.2159	4344.3096	575.095	BM 1	BM 1
1095	4639.3251	4368.0736	572.921	DRV2	DRV2
1096	5011.9531	4343.2658	577.006	CHK HPT 2	CHK HPT 2
1097	4644.6503	4272.2037	573.586	CHK HPT 50	CHK HPT 50
1098	4622.6837	4359.7991	572.772	DRV1	DRV1

Number	Northing	Easting	Elevation	Raw Desc	Full Desc
1099	4629.1493	4364.0446	572.813	SEL	SEL
1100	4640.4314	4370.4883	573.083	DRV2	DRV2
1101	4645.0281	4403.2091	573.001	DRV2	DRV2
1102	4638.2428	4433.7432	573.100	DRV2	DRV2
1103	4661.1700	4482.7493	572.772	DRV2	DRV2
1104	4649.2684	4485.0591	572.811	SEL	SEL
1105	4627.5536	4443.4514	573.112	SEL	SEL
1106	4665.5502	4500.5789	572.562	DRV2	DRV2
1107	4653.8696	4504.2488	572.449	DRV2	DRV2
1108	4651.5738	4510.2025	572.863	DRV2	DRV2
1109	4644.2370	4514.0207	572.815	DRV2	DRV2
1110	4634.8552	4507.4267	572.471	DRV2	DRV2
1111	4629.1606	4493.7910	572.281	DRV2	DRV2
1112	4615.2277	4456.8706	572.893	DRV2	DRV2
1113	4605.4611	4453.3653	572.737	DRV2	DRV2
1114	4552.7293	4451.0388	572.516	DRV2	DRV2
1115	4526.2223	4450.1969	573.058	DRV2	DRV2
1116	4527.7878	4389.2549	573.354	DRV2	DRV2
1117	4572.2371	4396.4084	572.992	DRV2	DRV2
1118	4611.2747	4396.6090	572.597	DRV2	DRV2
1119	4611.2865	4396.6704	572.595	DRV1	DRV1
1120	4622.6967	4399.6493	572.821	SEL	SEL
1121	4607.1421	4422.0851	572.835	SEL	SEL
1122	4575.1205	4419.8151	572.523	SEL	SEL
1123	4543.4132	4417.4523	572.918	SEL	SEL
1124	4714.8565	4306.4655	570.941		
1125	4522.0340	4337.1368	572.818	SEL	SEL
1126	4522.0340	4337.1368	572.818	CLF1	CLF1
1127	4518.2356	4340.2772	572.801	SEL	SEL
1128	4522.8837	4369.8894	572.952	SEL	SEL
1129	4519.3133	4373.3917	572.941	SEL	SEL
1130	4526.7802	4416.7882	573.193	SEL	SEL
1131	4524.5289	4416.3992	574.273	SEL	SEL
1132	4521.3670	4420.2740	574.216	SEL	SEL
1133	4524.8306	4406.7985	573.080	ELB1	ELB1
1134	4524.8274	4406.7958	573.071	ELB2	ELB2
1135	4525.6649	4416.4105	574.529	ELB1	ELB1
1136	4527.1507	4416.4006	573.287	ELB2	ELB2
1137	4524.7183	4433.9980	572.965	ELB2	ELB2
1138	4524.8851	4433.9319	573.000	ELB1	ELB1
1139	4530.5742	4420.3955	572.980	SEL	SEL
1140	4524.6295	4422.7213	574.136	SEL	SEL
1141	4521.6200	4426.7139	574.140	SEL	SEL
1142	4525.6986	4476.7605	572.966	SEL	SEL
1143	4521.1756	4474.7084	572.975	SEL	SEL
1144	4527.8368	4532.9327	572.901	SEL	SEL
1145	4522.8812	4532.2104	572.877	SEL	SEL
1146	4531.5384	4590.0537	573.172	SEL	SEL
1147	4526.6171	4590.9263	573.171	SEL	SEL
1148	4534.1463	4642.4157	573.181	SEL	SEL
1149	4529.6559	4644.5852	573.180	SEL	SEL
1150	4537.5301	4692.1666	573.905	SEL	SEL
1151	4533.5719	4695.2786	573.907	SEL	SEL
1152	4539.6137	4715.6671	573.318	SEL	SEL
1153	4539.5650	4715.7113	573.327	CLF1	CLF1
1154	4592.8075	4717.7354	573.351	MI GATE	MI GATE
1155	4592.8057	4717.7379	573.355	SEL	SEL
1156	4578.5416	4717.6075	573.312	MI GATE	MI GATE
1157	4578.5414	4717.6077	573.324	SEL	SEL
1158	4578.5377	4717.6123	573.324	CLF1	CLF1
1159	4636.1440	4717.9083	573.072	SEL	SEL
1160	4614.4584	4718.2893	573.540	CLF1	CLF1
1161	4614.6509	4718.0373	573.808	MI HUB	MI HUB

Number	Northing	Easting	Elevation	Raw Desc	Full Desc
1162	4538.1878	4515.2802	573.080	ELB1	ELB1
1163	4579.1175	4510.3489	572.921	ELB1	ELB1
1164	4627.0695	4514.8945	572.596	ELB1	ELB1
1165	4621.3198	4492.9020	572.791	ELB1	ELB1
1166	4608.2862	4493.7889	573.404	ELB1	ELB1
1167	4591.5999	4491.5311	573.291	ELB1	ELB1
1168	4591.6802	4491.5781	573.291	ELB3	ELB3
1169	4591.7837	4491.6387	573.292	ELB2	ELB2
1170	4589.3861	4489.3318	573.237	ELB1	ELB1
1171	4588.7025	4491.1975	574.797	ELB2	ELB2
1172	4588.7904	4493.4171	575.359	ELB3	ELB3
1173	4581.6138	4494.0842	576.024	ELB3	ELB3
1174	4580.2836	4487.7297	575.303	ELB2	ELB2
1175	4581.0087	4484.1426	573.253	ELB1	ELB1
1176	4572.3107	4489.4337	573.062	ELB1	ELB1
1177	4572.9307	4492.4116	575.148	ELB2	ELB2
1178	4572.9406	4492.4165	575.150	ELB3	ELB3
1179	4565.6681	4494.6205	576.164	ELB3	ELB3
1180	4562.8343	4489.9357	572.791	ELB1	ELB1
1181	4548.6853	4489.0779	573.392	ELB1	ELB1
1182	4548.7250	4489.0946	573.390	ELB3	ELB3
1183	4536.4144	4490.5541	572.989	ELB1	ELB1
1184	4627.2935	4514.9819	572.404	ELB2	ELB2
1185	4569.2344	4505.8889	577.788	ELB2	ELB2
1186	4543.9448	4508.4749	579.062	ELB2	ELB2
1187	4544.7616	4502.8384	578.785	ELB2	ELB2
1188	4568.7279	4496.7291	578.007	ELB2	ELB2
1189	4582.0267	4495.6105	577.780	ELB2	ELB2
1190	4588.6647	4495.3290	577.740	ELB2	ELB2
1191	4608.7180	4496.4408	575.059	ELB2	ELB2
1192	4619.9677	4495.8625	574.006	ELB2	ELB2
1193	4621.3044	4493.1117	572.805	ELB2	ELB2
1194	4614.8017	4479.1576	572.987	SEL	SEL
1195	4570.2549	4476.1836	572.647	SEL	SEL
1196	4575.1116	4532.2420	572.901	SEL	SEL
1197	4624.9062	4531.5158	572.895	SEL	SEL
1198	4582.5440	4589.5562	573.163	SEL	SEL
1199	4634.1494	4587.9551	572.908	SEL	SEL
1200	4630.1741	4518.9761	572.626	ELB1	ELB1
1201	4630.4601	4532.7939	572.908	ELB1	ELB1
1202	4630.5909	4546.7489	572.961	ELB1	ELB1
1203	4634.7261	4556.5047	572.796	ELB1	ELB1
1204	4642.2727	4558.6069	572.724	ELB1	ELB1
1205	4647.8421	4559.0022	572.977	ELB1	ELB1
1206	4653.1210	4549.1931	572.885	ELB1	ELB1
1207	4646.0144	4546.6588	572.772	ELB1	ELB1
1208	4640.4825	4539.1976	572.745	ELB1	ELB1
1209	4635.2665	4517.4101	572.559	ELB1	ELB1
1210	4634.2810	4518.8199	573.681	ELB1	ELB1
1211	4637.5746	4537.2796	574.274	ELB1	ELB1
1212	4639.6467	4547.7406	576.458	ELB1	ELB1
1213	4640.8483	4552.0546	576.310	ELB1	ELB1
1214	4638.5279	4552.7118	576.565	ELB1	ELB1
1215	4639.0268	4551.2769	577.721	SEL	SEL
1216	4634.6649	4546.1444	576.237	ELB1	ELB1
1217	4635.8294	4539.5914	574.294	ELB1	ELB1
1218	4632.6718	4532.0701	574.343	ELB1	ELB1
1219	4631.6092	4521.8244	574.424	ELB1	ELB1
1220	4585.2002	4638.4234	573.411	SEL	SEL
1221	4633.9708	4639.2597	573.775	SEL	SEL
1222	4652.2370	4583.2091	572.599	ELB1	ELB1
1223	4642.2569	4589.3038	572.768	ELB1	ELB1
1224	4638.7473	4598.4489	572.875	ELB1	ELB1

Number	Northing	Easting	Elevation	Raw Desc	Full Desc
1225	4642.6807	4602.0769	572.887	ELB1	ELB1
1226	4643.0127	4611.9391	573.458	ELB1	ELB1
1227	4655.0455	4629.5380	573.224	ELB1	ELB1
1228	4660.8413	4616.4744	573.064	ELB1	ELB1
1229	4651.9653	4603.9657	572.855	ELB1	ELB1
1230	4647.4052	4595.2147	572.869	ELB1	ELB1
1231	4650.7682	4584.3518	573.129	ELB1	ELB1
1232	4643.3001	4590.5585	574.038	ELB1	ELB1
1233	4641.5274	4598.0306	574.806	ELB1	ELB1
1234	4644.3253	4602.3071	574.492	ELB1	ELB1
1235	4646.4975	4611.3875	576.138	ELB1	ELB1
1236	4650.2271	4616.1436	577.023	ELB1	ELB1
1237	4655.0001	4629.6882	573.201	ELB1	ELB1
1238	4656.0654	4617.9316	574.358	ELB1	ELB1
1239	4652.5024	4614.3318	577.265	ELB1	ELB1
1240	4648.7863	4606.2114	576.085	ELB1	ELB1
1241	4646.3267	4599.8302	574.715	ELB1	ELB1
1242	4644.4213	4594.0896	573.852	ELB1	ELB1
1243	4634.4074	4626.4432	573.920	SEL	SEL
1244	4637.1068	4628.8752	574.295	SEL	SEL
1245	4640.6141	4624.1380	573.153	ELB1	ELB1
1246	4641.5512	4632.1043	573.467	ELB1	ELB1
1247	4635.0459	4635.4446	573.281	ELB1	ELB1
1248	4627.4807	4627.3592	572.857	ELB1	ELB1
1249	4635.1562	4620.2084	573.441	ELB1	ELB1
1250	4563.9421	4661.5804	573.441	ELB1	ELB1
1251	4563.9567	4661.5698	573.441	ELB2	ELB2
1252	4553.1737	4670.6071	573.261	ELB1	ELB1
1253	4551.0266	4667.7087	573.879	ELB2	ELB2
1254	4543.9454	4677.4924	573.268	ELB2	ELB2
1255	4543.9260	4677.5065	573.266	ELB1	ELB1
1256	4589.4252	4687.6859	572.803	SEL	SEL
1257	4635.3600	4683.6638	572.902	SEL	SEL
1258	4700.0539	4424.8614	572.678	SEL	SEL
1259	4675.2180	4449.8145	572.384	SEL	SEL
1260	4674.9748	4499.8682	572.633	SEL	SEL
1261	4699.8757	4525.2295	574.450	SEL	SEL
1262	4750.4583	4475.0087	574.110	SEL	SEL
1263	4800.3198	4425.1163	576.798	SEL	SEL
1264	4824.8503	4500.0248	574.003	SEL	SEL
1265	4800.0616	4525.2891	574.085	SEL	SEL
1266	4950.0416	4474.9584	577.220	SEL	SEL
1267	4925.2005	4500.0530	575.532	SEL	SEL
1268	4945.2699	4519.7967	573.303	SEL	SEL
1269	4975.0449	4500.9344	572.862	SEL	SEL
1270	4673.6624	4403.4106	573.358	STP 40	STP 40
1271	4671.4541	4383.8323	572.796	ELB1	ELB1
1272	4668.4757	4374.1483	573.190	ELB1	ELB1
1273	4658.0508	4369.2296	574.065	ELB1	ELB1
1274	4651.9048	4372.6876	573.506	ELB1	ELB1
1275	4648.9344	4385.0007	572.859	ELB1	ELB1
1276	4652.9656	4393.9850	572.857	ELB1	ELB1
1277	4670.9499	4390.4923	572.760	ELB1	ELB1
1278	4659.1015	4384.1551	579.210	ELB1	ELB1
1279	4661.3454	4384.0006	579.017	ELB1	ELB1
1280	4661.7963	4381.0666	578.860	ELB1	ELB1
1281	4659.2800	4381.6756	578.908	ELB1	ELB1
1282	4672.9899	4346.8942	574.524	ELB1	ELB1
1283	4663.9849	4353.1332	574.637	ELB1	ELB1
1284	4652.2946	4355.7093	574.565	ELB1	ELB1
1285	4653.5675	4365.8453	574.291	ELB1	ELB1
1286	4670.0284	4373.0344	572.918	ELB1	ELB1
1287	4675.8768	4362.8548	574.193	ELB1	ELB1

Number	Northing	Easting	Elevation	Raw Desc	Full Desc
1288	4674.0610	4348.9401	574.848	ELB1	ELB1
1289	4666.4364	4354.8855	578.247	ELB1	ELB1
1290	4665.5358	4357.0590	578.435	ELB1	ELB1
1291	4663.6818	4358.3591	577.291	ELB1	ELB1
1292	4658.7677	4358.6171	576.367	ELB1	ELB1
1293	4653.5133	4356.8519	575.730	ELB1	ELB1
1294	4654.5309	4359.2473	575.923	ELB1	ELB1
1295	4663.1384	4363.6046	576.436	ELB1	ELB1
1296	4669.1634	4360.3683	578.339	ELB1	ELB1
1297	4655.1320	4541.9217	572.579	SEL	SEL
1298	4681.0803	4539.7517	573.364	SEL	SEL
1299	4658.2692	4587.6858	572.690	SEL	SEL
1300	4703.9273	4596.1113	573.131	SEL	SEL
1301	4757.5738	4599.8892	572.888	SEL	SEL
1302	4701.6425	4641.2702	572.799	SEL	SEL
1303	4752.4735	4642.1178	573.210	SEL	SEL
1304	4780.0698	4640.7464	574.161	SEL	SEL
1305	4690.9549	4698.6855	573.145	SEL	SEL
1306	4691.8270	4717.4983	573.019	SEL	SEL
1307	4736.6205	4700.0011	573.031	SEL	SEL
1308	4738.5598	4719.6822	573.009	SEL	SEL
1309	4777.1648	4702.1143	573.062	SEL	SEL
1310	4766.9522	4727.7770	573.310	SEL	SEL
1311	4636.6134	4768.0767	573.142	SEL	SEL
1312	4636.5672	4768.2143	573.153	SEL	SEL
1313	4636.5701	4768.4109	573.309	SEL	SEL
1314	4684.7282	4765.7844	573.095	SEL	SEL
1315	4732.7767	4764.6641	572.807	SEL	SEL
1316	4778.1115	4761.3209	573.125	SEL	SEL
1317	4661.2594	4809.7947	572.984	SEL	SEL
1318	4708.3847	4809.3041	573.241	SEL	SEL
1319	4730.5441	4811.6458	573.208	SEL	SEL
1320	4644.6567	4272.2535	573.580	CHK HPT 50	CHK HPT 50
1325	4614.4584	4718.2893	573.540	CLF1	CLF1
1326	4797.1900	4722.7866	577.026	CHK HPT 5	CHK HPT 5
1327	4697.4094	4500.5074	573.734	ELB1	ELB1
1328	4697.4235	4500.5923	573.734	ELB2	ELB2
1329	4692.3823	4503.5070	575.146	ELB4	ELB4
1330	4692.3747	4503.4780	575.145	ELB3	ELB3
1331	4687.0454	4494.2042	573.301	ELB2	ELB2
1332	4688.3301	4502.1018	574.987	ELB4	ELB4
1333	4676.3265	4501.8882	572.976	ELB2	ELB2
1334	4685.1347	4509.9865	574.810	ELB4	ELB4
1335	4682.4594	4526.9573	572.907	ELB2	ELB2
1336	4689.7870	4526.5412	575.126	ELB4	ELB4
1337	4695.1228	4526.1112	575.532	ELB3	ELB3
1338	4701.8805	4524.8065	574.113	ELB1	ELB1
1339	4707.3261	4541.6783	574.286	ELB1	ELB1
1340	4702.3183	4544.6094	575.372	ELB3	ELB3
1341	4690.5215	4542.6669	575.551	ELB4	ELB4
1342	4685.8125	4540.3375	573.613	ELB2	ELB2
1343	4682.7657	4552.2868	573.345	ELB2	ELB2
1344	4689.1872	4550.4332	575.833	ELB4	ELB4
1345	4699.9782	4544.7590	575.844	ELB3	ELB3
1346	4707.9171	4543.4906	574.402	ELB1	ELB1
1347	4690.3385	4519.5602	575.900	SEL	SEL
1348	4696.1737	4536.5027	576.006	SEL	SEL
1349	4696.5751	4541.5976	574.803	SEL	SEL
1350	4700.1895	4547.8117	576.154	SEL	SEL
1351	4701.5398	4556.3796	575.351	SEL	SEL
1352	4703.2892	4568.9168	575.637	ELB4	ELB4
1353	4701.4297	4574.4566	573.358	ELB2	ELB2
1354	4698.4202	4584.0398	574.456	SEL	SEL

Number	Northing	Easting	Elevation	Raw Desc	Full Desc
1355	4699.9543	4586.3363	573.909	SEL	SEL
1356	4699.9787	4587.7740	574.574	SEL	SEL
1357	4709.4775	4585.0747	572.986	ELB2	ELB2
1358	4709.4791	4585.0906	572.984	ELB5	ELB5
1359	4704.4131	4591.3687	573.216	ELB5	ELB5
1360	4695.9759	4591.4378	573.225	ELB5	ELB5
1361	4693.0193	4586.1446	573.236	ELB5	ELB5
1362	4694.3880	4580.8694	573.129	ELB5	ELB5
1363	4702.4449	4578.3213	572.908	ELB5	ELB5
1364	4710.6625	4571.4720	575.657	ELB4	ELB4
1365	4717.9976	4573.1818	575.795	ELB4	ELB4
1366	4708.6797	4576.4656	573.317	ELB2	ELB2
1367	4709.4519	4585.1474	572.980	ELB2	ELB2
1368	4719.4914	4587.0173	573.230	ELB2	ELB2
1369	4728.3480	4587.9364	572.905	ELB2	ELB2
1370	4741.8583	4586.4157	572.533	ELB2	ELB2
1371	4741.8231	4586.3878	572.536	ELB5	ELB5
1372	4730.7584	4577.8800	574.009	ELB5	ELB5
1373	4730.7733	4577.8917	574.008	ELB6	ELB6
1374	4726.3398	4585.4283	574.315	ELB6	ELB6
1375	4724.2335	4578.6001	574.206	ELB5	ELB5
1376	4715.4228	4577.9505	574.333	ELB5	ELB5
1377	4713.4774	4582.2177	574.686	ELB6	ELB6
1378	4706.7823	4576.3276	573.203	ELB6	ELB6
1379	4706.7822	4576.3326	573.202	ELB5	ELB5
1380	4719.4097	4557.7076	575.753	ELB3	ELB3
1381	4726.0753	4551.4045	573.958	ELB1	ELB1
1382	4734.7229	4550.2865	574.456	ELB1	ELB1
1383	4733.8880	4554.1787	575.308	ELB3	ELB3
1384	4740.2705	4551.3701	574.005	ELB1	ELB1
1385	4740.8750	4556.6712	575.770	ELB3	ELB3
1386	4743.9165	4549.8066	574.052	SEL	SEL
1387	4728.8154	4545.0410	574.468	SEL	SEL
1388	4713.5295	4528.3766	574.192	SEL	SEL
1389	4707.5109	4504.9676	573.954	SEL	SEL
1390	4748.7485	4547.2883	574.095	ELB5	ELB5
1391	4748.2208	4542.7829	575.942	ELB6	ELB6
1392	4735.2883	4532.9726	576.152	ELB6	ELB6
1393	4733.4502	4536.0151	574.933	ELB5	ELB5
1394	4719.3664	4528.6528	574.246	ELB5	ELB5
1395	4723.9147	4525.7553	575.178	ELB6	ELB6
1396	4723.3165	4515.9165	574.640	ELB5	ELB5
1397	4732.3882	4513.1874	574.443	ELB5	ELB5
1398	4731.3247	4518.6068	575.991	ELB6	ELB6
1399	4731.4870	4523.6915	575.411	SEL	SEL
1400	4742.3310	4527.6655	574.583	ELB5	ELB5
1401	4737.1241	4531.2947	576.289	ELB6	ELB6
1402	4752.8563	4534.4247	574.197	ELB5	ELB5
1403	4748.5797	4538.4599	576.498	ELB6	ELB6
1404	4749.6443	4539.6036	576.236	ELB6	ELB6
1405	4752.7225	4538.8522	574.565	ELB5	ELB5
1406	4752.8471	4543.5334	574.071	ELB5	ELB5
1407	4741.8399	4535.9863	575.119	SEL	SEL
1408	4745.7456	4537.9765	576.691	SEL	SEL
1409	4759.1625	4547.4121	574.201	SEL	SEL
1410	4761.5741	4553.5587	573.903	ELB1	ELB1
1411	4762.7013	4561.0053	574.981	ELB3	ELB3
1412	4774.0265	4557.4940	575.427	ELB3	ELB3
1413	4780.6718	4555.0578	574.506	ELB3	ELB3
1414	4780.5869	4555.0433	574.508	ELB5	ELB5
1415	4779.3377	4550.0471	574.110	ELB1	ELB1
1416	4779.3456	4550.0461	574.111	ELB5	ELB5
1417	4779.9178	4542.7713	573.943	ELB5	ELB5

Number	Northing	Easting	Elevation	Raw Desc	Full Desc
1418	4790.4002	4543.9647	573.841	ELB5	ELB5
1419	4798.2973	4552.1666	574.138	ELB5	ELB5
1420	4801.1155	4563.5982	574.114	ELB5	ELB5
1421	4798.0515	4574.3378	574.028	ELB5	ELB5
1422	4798.0091	4574.3307	574.029	ELB1	ELB1
1423	4782.2151	4565.0818	575.281	ELB3	ELB3
1424	4786.7683	4572.3076	575.870	ELB3	ELB3
1425	4790.9015	4574.1033	575.624	ELB3	ELB3
1426	4790.8611	4574.0961	575.626	ELB5	ELB5
1427	4791.2847	4568.0699	577.679	ELB5	ELB5
1428	4788.4209	4567.2793	577.747	ELB5	ELB5
1429	4788.9711	4561.0526	577.295	ELB5	ELB5
1430	4787.2140	4556.8423	576.113	ELB5	ELB5
1431	4782.9872	4550.8438	575.911	ELB5	ELB5
1432	4785.3420	4551.1707	576.443	ELB5	ELB5
1433	4789.2696	4555.6120	575.657	ELB5	ELB5
1434	4790.6247	4561.0911	577.102	ELB5	ELB5
1435	4786.5718	4577.7657	575.225	SEL	SEL
1436	4760.7099	4567.1756	575.252	SEL	SEL
1437	4758.8822	4579.0865	575.312	ELB4	ELB4
1438	4756.5712	4583.7792	573.048	ELB2	ELB2
1439	4760.9375	4582.2940	574.476	ELB2	ELB2
1440	4761.4597	4578.4046	575.274	ELB4	ELB4
1441	4766.9799	4576.4095	574.127	ELB4	ELB4
1442	4766.6895	4580.4056	573.569	ELB2	ELB2
1443	4774.2410	4584.9842	573.810	ELB2	ELB2
1444	4777.7964	4583.2837	575.053	ELB4	ELB4
1445	4777.7747	4583.2762	575.054	ELB5	ELB5
1446	4783.1885	4581.2702	575.083	ELB5	ELB5
1447	4789.8683	4582.4687	575.220	ELB5	ELB5
1448	4789.8991	4582.4775	575.225	ELB3	ELB3
1449	4788.5266	4585.5610	575.969	ELB3	ELB3
1450	4788.5475	4585.5678	575.971	ELB5	ELB5
1451	4796.3221	4585.4605	574.066	ELB1	ELB1
1452	4780.0401	4586.4182	575.856	ELB5	ELB5
1453	4778.6263	4586.6142	575.806	ELB4	ELB4
1454	4778.5684	4586.5920	575.806	ELB5	ELB5
1455	4781.8813	4597.6385	576.458	ELB4	ELB4
1456	4773.8385	4603.9850	573.354	ELB2	ELB2
1457	4790.4203	4595.9387	576.638	ELB3	ELB3
1458	4791.6222	4616.5320	577.167	ELB3	ELB3
1459	4785.0983	4615.9595	577.153	ELB4	ELB4
1460	4772.5762	4617.5802	573.587	ELB2	ELB2
1461	4799.3217	4611.0068	573.896	ELB1	ELB1
1462	4803.3088	4615.6927	574.210	ELB1	ELB1
1463	4788.1607	4640.8639	576.346	ELB4	ELB4
1464	4778.8025	4641.6866	574.113	ELB2	ELB2
1465	4798.4521	4638.2650	576.229	ELB3	ELB3
1466	4806.6809	4641.1764	574.386	ELB1	ELB1
1467	4782.8303	4656.1973	574.196	ELB2	ELB2
1468	4789.4887	4654.8802	576.013	ELB4	ELB4
1469	4790.9781	4657.2555	576.823	ELB4	ELB4
1470	4796.4764	4654.0090	576.155	ELB3	ELB3
1471	4794.4328	4659.2629	577.325	ELB3	ELB3
1472	4804.1531	4661.0771	574.327	ELB1	ELB1
1473	4792.3894	4675.5168	577.666	ELB4	ELB4
1474	4795.8457	4676.0768	577.832	ELB3	ELB3
1475	4780.4745	4675.7953	574.074	ELB2	ELB2
1476	4805.3170	4670.8123	574.061	ELB1	ELB1
1477	4805.9030	4690.4267	574.359	ELB1	ELB1
1478	4797.8318	4694.6786	576.705	ELB3	ELB3
1479	4792.6535	4698.0337	576.583	ELB4	ELB4
1480	4782.0824	4700.1160	574.128	ELB2	ELB2

Number	Northing	Easting	Elevation	Raw Desc	Full Desc
1481	4797.1916	4722.7857	577.025	CHK HPT 5	CHK HPT 5
1482	4706.8687	4558.9407	575.889	CHK HPT 4	CHK HPT 4
1483	4813.9671	4562.7439	573.761	SEL	SEL
1484	4814.5776	4608.6229	573.865	SEL	SEL
1485	4789.4372	4613.2071	576.966	SEL	SEL
1486	4792.2863	4642.7975	576.310	SEL	SEL
1487	4792.0730	4647.0800	576.866	SEL	SEL
1488	4793.0706	4653.1959	576.018	SEL	SEL
1489	4817.1270	4650.6475	574.038	SEL	SEL
1490	4822.2336	4691.3892	573.701	SEL	SEL
1491	4796.3560	4695.2347	576.469	SEL	SEL
1492	4796.2992	4697.7390	576.796	SEL	SEL
1493	4821.6291	4719.8671	574.061	SEL	SEL
1494	4827.1179	4644.3332	574.096	ELB5	ELB5
1495	4834.5717	4644.2333	573.772	ELB5	ELB5
1496	4835.6930	4639.8276	573.350	ELB5	ELB5
1497	4825.8584	4637.4867	573.865	ELB5	ELB5
1498	4837.8860	4646.8818	573.916	SEL	SEL
1499	4829.4120	4642.1056	575.088	SEL	SEL
1500	4831.1837	4635.3844	573.717	SEL	SEL
1501	4833.1812	4627.9070	576.945	SEL	SEL
1502	4835.7362	4632.2277	573.430	ELB5	ELB5
1503	4838.9715	4624.9864	573.575	ELB5	ELB5
1504	4827.6534	4622.1596	573.769	ELB5	ELB5
1505	4824.7076	4630.9251	573.958	ELB5	ELB5
1506	4794.2746	4714.5383	576.615	ELB4	ELB4
1507	4800.6385	4714.0884	576.532	ELB3	ELB3
1508	4812.1273	4713.9857	573.989	ELB1	ELB1
1509	4778.2810	4708.4784	573.503	ELB2	ELB2
1510	4778.2723	4708.4718	573.501	ELB5	ELB5
1511	4785.9821	4714.6210	574.955	ELB2	ELB2
1512	4783.2241	4715.2562	574.992	ELB5	ELB5
1513	4781.6514	4728.1359	574.374	ELB5	ELB5
1514	4783.3910	4729.0611	574.360	ELB2	ELB2
1515	4778.9166	4737.7649	573.262	ELB2	ELB2
1516	4778.9288	4737.7548	573.264	ELB5	ELB5
1517	4773.0248	4736.2393	573.377	ELB5	ELB5
1518	4767.6610	4727.1788	573.400	ELB5	ELB5
1519	4766.8838	4711.1772	573.070	ELB5	ELB5
1520	4772.9943	4707.5760	573.006	ELB5	ELB5
1521	4776.6298	4717.2692	576.817	ELB5	ELB5
1522	4776.7465	4730.5154	575.480	ELB5	ELB5
1523	4774.6131	4729.2555	575.490	ELB5	ELB5
1524	4774.4538	4716.4107	576.721	ELB5	ELB5
1525	4615.9337	4768.1828	573.841	SEL	SEL
1526	4615.4301	4812.6169	573.638	SEL	SEL
1527	4782.7881	4767.3230	573.562	ELB2	ELB2
1528	4792.6890	4769.2141	575.741	ELB4	ELB4
1529	4789.6486	4778.7972	574.884	ELB4	ELB4
1530	4784.0726	4774.7038	573.948	ELB2	ELB2
1531	4781.8850	4780.2481	575.663	ELB4	ELB4
1532	4774.6320	4778.5542	573.531	ELB2	ELB2
1533	4773.3534	4782.4525	574.503	ELB4	ELB4
1534	4770.7045	4780.1419	573.817	ELB4	ELB4
1535	4770.7041	4780.1429	573.817	ELB2	ELB2
1536	4772.3753	4773.0303	573.364	ELB2	ELB2
1537	4770.2604	4772.9968	574.318	ELB4	ELB4
1538	4761.2873	4756.5140	573.115	ELB2	ELB2
1539	4759.8964	4761.9092	575.234	ELB4	ELB4
1540	4749.3958	4757.4079	573.000	ELB2	ELB2
1541	4736.3973	4767.7417	573.035	ELB2	ELB2
1542	4741.5842	4770.4839	575.286	ELB4	ELB4
1543	4734.7775	4775.8890	573.129	ELB2	ELB2

Number	Northing	Easting	Elevation	Raw Desc	Full Desc
1544	4800.8791	4757.9786	576.642	ELB3	ELB3
1545	4812.4241	4759.4779	574.061	ELB1	ELB1
1546	4821.7890	4759.5687	573.499	SEL	SEL
1547	4830.8951	4804.6233	573.702	SEL	SEL
1548	4813.3521	4805.3869	573.795	ELB1	ELB1
1549	4802.9104	4806.3589	577.018	ELB3	ELB3
1550	4806.8153	4853.0601	576.383	ELB3	ELB3
1551	4813.3992	4854.0241	574.301	ELB1	ELB1
1552	4824.9883	4853.9393	573.941	SEL	SEL
1553	4817.2874	4874.6978	573.896	ELB1	ELB1
1554	4805.4478	4874.7050	577.145	ELB3	ELB3
1555	4806.8996	4897.9954	576.552	ELB3	ELB3
1556	4816.8770	4897.4157	574.189	ELB1	ELB1
1557	4828.5039	4941.0742	573.775	SEL	SEL
1558	4818.4474	4942.9752	574.011	ELB1	ELB1
1559	4809.8750	4944.5484	576.810	ELB3	ELB3
1560	4804.9973	4943.8618	576.272	SEL	SEL
1561	4803.4051	4934.6001	575.875	SEL	SEL
1562	4804.2046	4930.0418	576.595	SEL	SEL
1563	4802.2680	4912.2428	575.750	SEL	SEL
1564	4800.4633	4905.1744	576.522	SEL	SEL
1565	4801.3237	4892.3762	576.024	SEL	SEL
1566	4804.9479	4896.7820	576.821	SEL	SEL
1567	4802.1466	4873.0592	577.390	SEL	SEL
1568	4802.2074	4866.0428	576.392	SEL	SEL
1569	4801.6405	4861.3108	576.651	SEL	SEL
1570	4801.2930	4855.0663	575.866	SEL	SEL
1571	4802.0268	4849.7469	576.713	SEL	SEL
1572	4800.2090	4831.6128	575.841	SEL	SEL
1573	4799.5415	4822.5381	575.695	SEL	SEL
1574	4799.1209	4817.4899	576.550	SEL	SEL
1575	4801.1209	4813.4019	576.033	SEL	SEL
1576	4800.4246	4808.4993	577.182	SEL	SEL
1577	4798.8566	4792.6315	576.903	SEL	SEL
1578	4799.2991	4788.3874	575.891	SEL	SEL
1579	4799.1317	4783.3711	576.872	SEL	SEL
1580	4798.7394	4776.9919	575.296	SEL	SEL
1581	4797.7450	4770.9224	576.156	SEL	SEL
1582	4796.8539	4766.2000	575.822	SEL	SEL
1583	4798.1233	4760.5608	577.213	SEL	SEL
1584	4798.3641	4750.4381	575.634	SEL	SEL
1585	4706.8781	4558.9561	575.885	CHK HPT 4	CHK HPT 4
1586	4797.1776	4722.7412	576.965	CHK HPT 5	CHK HPT 5
1587	4731.3817	4793.1352	573.197	ELB2	ELB2
1588	4731.4037	4793.1570	573.197	ELB5	ELB5
1589	4738.2567	4797.2591	574.890	ELB4	ELB4
1590	4741.2821	4803.0084	575.158	ELB4	ELB4
1591	4745.7752	4812.2971	574.376	ELB4	ELB4
1592	4749.1833	4821.6964	574.714	ELB4	ELB4
1593	4735.2681	4796.8506	573.975	ELB5	ELB5
1594	4737.5272	4803.5859	573.076	ELB5	ELB5
1595	4740.9043	4811.0595	573.602	ELB5	ELB5
1596	4740.8876	4811.0452	573.601	ELB6	ELB6
1597	4735.2703	4804.6050	573.069	ELB5	ELB5
1598	4734.0670	4806.7756	573.524	ELB6	ELB6
1599	4729.3912	4801.3033	574.233	ELB6	ELB6
1600	4732.9977	4798.8576	573.368	ELB5	ELB5
1601	4734.4770	4796.9678	573.662	ELB6	ELB6
1602	4734.4421	4796.9334	573.661	ELB5	ELB5
1603	4730.5488	4795.3541	573.901	ELB6	ELB6
1604	4728.0500	4794.4647	573.452	ELB2	ELB2
1605	4723.4439	4802.9827	573.303	ELB2	ELB2
1606	4727.9507	4803.4051	574.095	ELB6	ELB6

Number	Northing	Easting	Elevation	Raw Desc	Full Desc
1607	4731.4580	4812.0734	573.282	ELB6	ELB6
1608	4731.4564	4812.0722	573.282	ELB2	ELB2
1609	4744.7663	4824.0466	572.792	ELB2	ELB2
1610	4740.3868	4794.7767	574.917	ELB5	ELB5
1611	4747.9509	4801.3412	575.500	ELB5	ELB5
1612	4756.2244	4805.5841	575.881	ELB5	ELB5
1613	4761.5904	4805.9513	575.288	ELB5	ELB5
1614	4761.6001	4805.9653	575.288	ELB6	ELB6
1615	4764.4941	4794.3238	574.551	ELB5	ELB5
1616	4768.2768	4797.4212	573.442	ELB6	ELB6
1617	4775.2921	4790.5877	575.683	ELB5	ELB5
1618	4777.1151	4794.6976	573.927	ELB6	ELB6
1619	4786.0811	4795.9701	573.877	ELB6	ELB6
1620	4791.4306	4792.0414	574.698	ELB5	ELB5
1621	4794.1592	4797.9276	575.973	ELB5	ELB5
1622	4795.5949	4820.3777	576.118	ELB5	ELB5
1623	4789.3280	4821.9512	573.906	ELB6	ELB6
1624	4788.6696	4836.2679	573.619	ELB6	ELB6
1625	4791.6383	4840.4108	575.196	ELB5	ELB5
1626	4782.9645	4841.0339	574.270	ELB5	ELB5
1627	4783.7960	4837.8170	573.477	ELB6	ELB6
1628	4778.5217	4822.7124	575.127	ELB5	ELB5
1629	4784.1389	4822.4258	573.561	ELB6	ELB6
1630	4783.7127	4813.6635	573.498	ELB6	ELB6
1631	4777.8622	4814.1772	574.736	ELB5	ELB5
1632	4778.0877	4807.6280	573.496	ELB6	ELB6
1633	4750.9989	4831.5424	574.674	ELB4	ELB4
1634	4782.9685	4840.8766	574.253	ELB5	ELB5
1635	4786.1033	4847.9984	574.596	ELB5	ELB5
1636	4780.9746	4849.1558	574.832	ELB5	ELB5
1637	4769.3618	4845.5258	573.987	ELB5	ELB5
1638	4759.5601	4841.0709	574.001	ELB5	ELB5
1639	4752.8338	4833.2862	575.146	ELB5	ELB5
1640	4749.8162	4837.3050	575.376	ELB5	ELB5
1641	4755.6451	4845.7766	575.495	ELB5	ELB5
1642	4762.4582	4852.4269	575.208	ELB5	ELB5
1643	4762.5026	4852.4387	575.209	ELB6	ELB6
1644	4767.0091	4852.7902	576.254	ELB5	ELB5
1645	4767.2892	4856.8502	575.253	ELB6	ELB6
1646	4770.3611	4859.6246	575.623	ELB6	ELB6
1647	4774.2234	4859.6968	576.558	ELB5	ELB5
1648	4772.7418	4867.5435	575.177	ELB5	ELB5
1649	4772.7546	4867.5414	575.178	ELB6	ELB6
1650	4772.6084	4871.3701	575.813	ELB5	ELB5
1651	4769.7108	4870.5124	575.038	ELB5	ELB5
1652	4769.7136	4870.5117	575.038	ELB6	ELB6
1653	4764.5396	4869.4134	576.399	ELB5	ELB5
1654	4764.7574	4864.3997	575.278	ELB6	ELB6
1655	4763.0219	4865.5372	575.267	ELB6	ELB6
1656	4763.0238	4865.5370	575.268	ELB5	ELB5
1657	4763.4320	4855.5031	574.957	ELB6	ELB6
1658	4751.8483	4854.5265	575.617	ELB5	ELB5
1659	4744.0011	4848.9448	575.491	ELB5	ELB5
1660	4739.7142	4845.6181	574.851	ELB5	ELB5
1661	4739.6950	4845.6127	574.851	ELB6	ELB6
1662	4739.5672	4839.4100	574.003	ELB5	ELB5
1663	4743.6679	4835.0099	573.958	ELB5	ELB5
1664	4746.5094	4833.8892	575.026	ELB5	ELB5
1665	4746.5024	4833.8855	575.027	ELB4	ELB4
1666	4752.9866	4833.2705	575.134	ELB5	ELB5
1667	4741.5981	4832.3309	573.428	ELB2	ELB2
1668	4736.6302	4831.8784	573.697	ELB2	ELB2
1669	4735.7065	4834.5987	574.688	ELB4	ELB4

Number	Northing	Easting	Elevation	Raw Desc	Full Desc
1670	4730.3163	4836.4952	573.577	ELB4	ELB4
1671	4730.3610	4836.5964	573.580	ELB2	ELB2
1672	4739.6375	4840.4557	573.966	ELB4	ELB4
1673	4737.4209	4840.0672	573.624	ELB2	ELB2
1674	4735.1725	4846.4055	573.132	ELB2	ELB2
1675	4739.7390	4845.4734	574.891	ELB4	ELB4
1676	4742.9626	4854.7927	575.548	ELB4	ELB4
1677	4742.9222	4854.9126	575.545	ELB6	ELB6
1678	4741.7350	4861.6004	574.506	ELB4	ELB4
1679	4733.0693	4861.5646	574.127	ELB2	ELB2
1680	4724.0957	4861.5404	573.740	ELB2	ELB2
1681	4728.6261	4865.5871	575.060	ELB4	ELB4
1682	4723.7941	4863.1642	574.173	ELB4	ELB4
1683	4717.5485	4861.2039	573.296	ELB2	ELB2
1684	4724.1097	4868.3545	573.446	ELB2	ELB2
1685	4727.8907	4867.4351	574.839	ELB4	ELB4
1686	4731.4664	4871.5295	574.932	ELB4	ELB4
1687	4731.8737	4876.7029	573.204	ELB2	ELB2
1688	4741.8702	4877.1743	573.126	ELB2	ELB2
1689	4739.3713	4871.4168	574.967	ELB4	ELB4
1690	4743.8468	4863.5326	574.833	ELB4	ELB4
1691	4741.8481	4861.7377	574.552	ELB4	ELB4
1692	4745.2888	4862.7257	574.454	ELB6	ELB6
1693	4745.3298	4862.7084	574.455	ELB4	ELB4
1694	4748.5333	4864.6047	573.800	ELB4	ELB4
1695	4748.5343	4864.6044	573.801	ELB6	ELB6
1696	4748.5084	4864.6053	573.799	ELB2	ELB2
1697	4751.2284	4864.8252	573.436	ELB2	ELB2
1698	4751.2603	4864.8238	573.438	ELB4	ELB4
1699	4751.2593	4864.8236	573.438	ELB6	ELB6
1700	4754.7107	4864.7149	573.858	ELB6	ELB6
1701	4754.7306	4864.7140	573.859	ELB4	ELB4
1702	4759.5940	4866.8327	574.218	ELB6	ELB6
1703	4760.2408	4864.3687	574.413	ELB6	ELB6
1704	4741.6856	4861.6318	574.531	ELB6	ELB6
1705	4748.8734	4876.6168	573.109	ELB2	ELB2
1706	4755.0202	4873.9168	575.433	ELB4	ELB4
1707	4753.8894	4879.8070	574.016	ELB2	ELB2
1708	4758.0538	4881.0489	573.600	ELB2	ELB2
1709	4762.5194	4878.8877	573.524	ELB2	ELB2
1710	4761.0876	4873.3676	574.874	ELB4	ELB4
1711	4764.1565	4871.5817	576.201	ELB4	ELB4
1712	4769.6209	4870.6572	575.061	ELB4	ELB4
1713	4771.0926	4870.6852	575.137	ELB4	ELB4
1714	4771.1079	4870.7120	575.138	ELB5	ELB5
1715	4774.2957	4866.6532	575.368	ELB5	ELB5
1716	4780.1894	4870.7550	575.492	ELB5	ELB5
1717	4774.8137	4873.9016	576.749	ELB4	ELB4
1718	4775.5256	4882.5350	576.807	ELB4	ELB4
1719	4780.6820	4877.2559	575.603	ELB5	ELB5
1720	4780.6583	4877.2726	575.602	ELB6	ELB6
1721	4783.5749	4880.7945	576.568	ELB6	ELB6
1722	4783.7204	4877.2893	575.265	ELB5	ELB5
1723	4788.0811	4881.8115	577.442	ELB6	ELB6
1724	4794.2296	4877.6238	575.957	ELB6	ELB6
1725	4794.2300	4877.6229	575.958	ELB5	ELB5
1726	4795.5287	4859.1646	575.657	ELB5	ELB5
1727	4795.5212	4859.1599	575.656	ELB6	ELB6
1728	4789.7048	4854.9236	575.720	ELB6	ELB6
1729	4797.6052	4863.8718	576.770	ELB5	ELB5
1730	4797.2010	4877.8249	576.637	ELB5	ELB5
1731	4797.2044	4877.8113	576.636	ELB6	ELB6
1732	4799.3593	4888.6112	577.188	ELB5	ELB5

Number	Northing	Easting	Elevation	Raw Desc	Full Desc
1733	4796.8333	4888.8799	576.021	ELB6	ELB6
1734	4797.9756	4892.7854	575.892	ELB6	ELB6
1735	4797.9748	4892.7934	575.892	ELB5	ELB5
1736	4792.3903	4895.9329	576.642	ELB5	ELB5
1737	4793.1102	4893.6067	575.913	ELB6	ELB6
1738	4788.4132	4893.5513	575.977	ELB6	ELB6
1739	4788.4190	4893.5374	575.977	ELB5	ELB5
1740	4786.9797	4889.2330	577.349	ELB5	ELB5
1741	4792.3990	4890.4407	575.885	ELB6	ELB6
1742	4793.5311	4890.5734	575.949	ELB6	ELB6
1743	4791.4730	4884.7314	577.216	ELB5	ELB5
1744	4783.2398	4887.0670	576.969	ELB5	ELB5
1745	4771.8706	4886.1503	575.150	ELB4	ELB4
1746	4762.3133	4888.0012	573.650	ELB2	ELB2
1747	4762.9641	4891.6132	574.920	ELB4	ELB4
1748	4752.7765	4893.6503	574.090	ELB2	ELB2
1749	4754.0479	4898.5075	574.841	ELB4	ELB4
1750	4751.9645	4898.6883	573.925	ELB2	ELB2
1751	4752.6443	4903.7356	573.202	ELB2	ELB2
1752	4754.9374	4901.8281	574.870	ELB4	ELB4
1753	4759.0652	4903.5957	575.089	ELB4	ELB4
1754	4759.7018	4907.1454	573.559	ELB2	ELB2
1755	4765.4159	4904.5537	573.357	ELB2	ELB2
1756	4762.3593	4899.8478	575.373	ELB4	ELB4
1757	4772.9986	4899.3579	573.504	ELB2	ELB2
1758	4772.7905	4893.8957	574.921	ELB4	ELB4
1759	4772.9661	4893.8610	574.904	ELB5	ELB5
1760	4785.2753	4901.9845	575.930	ELB4	ELB4
1761	4781.1042	4906.6975	573.293	ELB2	ELB2
1762	4786.3859	4911.4704	573.468	ELB2	ELB2
1763	4795.3174	4910.3441	575.826	ELB4	ELB4
1764	4791.4432	4920.1792	575.251	ELB4	ELB4
1765	4782.6932	4921.2630	575.182	ELB4	ELB4
1766	4784.3219	4916.3150	573.838	ELB2	ELB2
1767	4768.0051	4907.6500	573.422	ELB2	ELB2
1768	4767.7241	4912.9951	575.534	ELB4	ELB4
1769	4761.7776	4919.3099	574.827	ELB4	ELB4
1770	4759.0193	4918.1806	573.587	ELB2	ELB2
1771	4757.7716	4924.2160	573.392	ELB2	ELB2
1772	4769.7788	4930.7943	573.161	ELB2	ELB2
1773	4775.4933	4926.5593	575.338	ELB4	ELB4
1774	4775.8083	4951.0711	575.126	ELB4	ELB4
1775	4767.6291	4950.6067	573.290	ELB2	ELB2
1776	4771.2560	4958.6674	573.283	ELB2	ELB2
1777	4775.4422	4956.1859	574.956	ELB4	ELB4
1778	4792.9486	4957.2119	574.796	ELB4	ELB4
1779	4791.1502	4961.7616	573.607	ELB2	ELB2
1780	4790.7300	4963.7414	573.800	ELB2	ELB2
1781	4799.5011	4960.8472	575.974	ELB4	ELB4
1782	4798.4079	4966.3198	575.414	ELB4	ELB4
1783	4788.4818	4968.2430	575.434	ELB4	ELB4
1784	4784.9966	4969.6878	576.335	ELB4	ELB4
1785	4781.3442	4968.8785	575.059	ELB4	ELB4
1786	4780.1422	4963.2993	573.554	ELB2	ELB2
1787	4769.7786	4964.4814	573.240	ELB2	ELB2
1788	4773.6084	4969.0534	575.206	ELB4	ELB4
1789	4773.9213	4972.7627	575.330	ELB4	ELB4
1790	4771.0564	4977.4092	573.530	ELB2	ELB2
1791	4791.1671	4978.9050	573.688	ELB2	ELB2
1792	4782.2858	4972.8202	575.265	ELB4	ELB4
1793	4785.3821	4971.8801	576.505	ELB4	ELB4
1794	4788.6119	4973.8511	575.429	ELB4	ELB4
1795	4795.1967	4974.1078	575.319	ELB4	ELB4

Number	Northing	Easting	Elevation	Raw Desc	Full Desc
1796	4800.1693	4978.4133	576.171	ELB4	ELB4
1797	4800.2446	4980.5796	577.097	ELB4	ELB4
1798	4801.6778	4986.5834	577.081	ELB4	ELB4
1799	4806.6917	4986.4122	576.937	ELB4	ELB4
1800	4807.5460	4980.9325	576.971	ELB4	ELB4
1801	4808.8498	4969.3116	576.306	ELB4	ELB4
1802	4808.8498	4969.3035	576.306	ELB3	ELB3
1803	4793.0354	4984.5293	573.605	ELB2	ELB2
1804	4799.0540	4992.7122	573.562	ELB2	ELB2
1805	4811.0605	4991.3396	573.747	ELB2	ELB2
1806	4817.7993	4985.0745	573.872	ELB2	ELB2
1807	4812.5437	4974.6130	573.651	ELB2	ELB2
1808	4815.9798	4963.7347	573.921	ELB2	ELB2
1809	4815.9799	4963.7357	573.921	ELB1	ELB1
1810	4797.1784	4722.7452	576.987	CHK HPT 5	CHK HPT 5
1811	4797.1773	4722.7282	576.968	CHK HPT 5	CHK HPT 5
1812	4755.5749	4872.0336	575.846	SEL	SEL
1813	4760.4289	4871.4096	575.164	SEL	SEL
1814	4764.5184	4869.7663	576.376	SEL	SEL
1815	4775.6228	4872.6545	576.772	SEL	SEL
1816	4778.9707	4866.4272	574.790	SEL	SEL
1817	4780.2916	4855.9090	576.495	SEL	SEL
1818	4795.0755	4845.8486	576.223	SEL	SEL
1819	4776.4940	4825.2939	575.085	SEL	SEL
1820	4766.7540	4831.4055	575.143	SEL	SEL
1821	4754.5743	4815.5694	574.721	SEL	SEL
1822	4759.5876	4800.9620	575.791	SEL	SEL
1823	4743.1455	4801.2418	575.311	SEL	SEL
1824	4781.4303	4801.8972	573.367	SEL	SEL
1825	4804.2566	4950.2443	575.833	SEL	SEL
1826	4794.0663	4945.0976	574.533	SEL	SEL
1827	4781.9605	4927.3329	575.222	SEL	SEL
1828	4804.0436	4970.5923	576.369	SEL	SEL
1829	4803.5508	4983.4761	577.090	SEL	SEL
1830	4782.5849	4982.4704	573.546	SEL	SEL
1831	4763.3952	4983.2488	573.571	SEL	SEL
1832	4760.5584	4958.3294	573.343	SEL	SEL
1833	4758.4023	4929.8848	573.289	SEL	SEL
1834	4753.0367	4914.9865	572.992	SEL	SEL
1835	4752.7350	4884.6391	574.203	SEL	SEL
1836	4760.8407	4884.4168	573.219	SEL	SEL
1837	4743.6333	4880.1387	572.972	SEL	SEL
1838	4751.0170	4863.1428	573.442	SEL	SEL
1839	4716.7506	4893.5036	573.063	SEL	SEL
1840	4711.5606	4860.8525	573.362	ELB1	ELB1
1841	4711.4846	4860.8509	573.359	ELB2	ELB2
1842	4707.4733	4864.8759	575.216	ELB2	ELB2
1843	4716.5337	4877.8251	573.899	ELB1	ELB1
1844	4707.5872	4877.4640	575.412	ELB3	ELB3
1845	4698.7282	4875.7313	575.034	ELB4	ELB4
1846	4692.6392	4874.2660	573.269	ELB2	ELB2
1847	4685.4216	4900.6693	573.309	ELB2	ELB2
1848	4686.9859	4913.6349	573.245	ELB2	ELB2
1849	4692.1580	4901.5617	575.457	ELB4	ELB4
1850	4696.6303	4901.4815	575.612	ELB3	ELB3
1851	4693.1202	4911.7545	575.466	ELB4	ELB4
1852	4712.4072	4904.3381	573.521	ELB1	ELB1
1853	4711.8653	4910.0179	575.197	ELB3	ELB3
1854	4708.7435	4920.1399	575.950	ELB4	ELB4
1855	4706.0571	4926.4923	573.596	ELB2	ELB2
1856	4706.1430	4926.5209	573.583	ELB5	ELB5
1857	4710.8039	4922.9479	574.846	ELB4	ELB4
1858	4710.8459	4922.9370	574.845	ELB5	ELB5

Number	Northing	Easting	Elevation	Raw Desc	Full Desc
1859	4737.7024	4897.8314	575.333	ELB3	ELB3
1860	4734.2846	4893.6319	573.535	ELB1	ELB1
1861	4730.4285	4887.8889	573.240	ELB1	ELB1
1862	4735.7568	4883.7755	573.702	ELB1	ELB1
1863	4736.9268	4887.4475	574.725	ELB3	ELB3
1864	4745.6708	4891.4452	575.052	ELB3	ELB3
1865	4747.4397	4896.0724	574.984	ELB3	ELB3
1866	4749.3030	4888.3802	574.063	ELB1	ELB1
1867	4751.8612	4893.6581	574.228	ELB1	ELB1
1868	4750.9272	4897.7608	573.856	ELB1	ELB1
1869	4746.2795	4903.6811	573.536	ELB1	ELB1
1870	4742.2981	4900.1317	575.594	ELB3	ELB3
1871	4727.1730	4909.4409	575.394	ELB3	ELB3
1872	4724.4799	4914.8404	574.627	ELB3	ELB3
1873	4724.4898	4914.8336	574.627	ELB5	ELB5
1874	4724.9817	4916.5677	574.795	ELB5	ELB5
1875	4724.9784	4916.5701	574.797	ELB3	ELB3
1876	4727.8507	4915.0740	574.100	ELB1	ELB1
1877	4733.5348	4921.8412	573.801	ELB1	ELB1
1878	4719.1979	4919.4524	574.579	ELB5	ELB5
1879	4713.6555	4926.4428	575.228	ELB5	ELB5
1880	4713.6611	4926.4387	575.228	ELB4	ELB4
1881	4709.9996	4930.1123	573.918	ELB2	ELB2
1882	4721.4493	4945.1225	573.528	ELB2	ELB2
1883	4722.2101	4940.3361	574.919	ELB4	ELB4
1884	4725.7803	4944.3336	574.346	ELB4	ELB4
1885	4731.4201	4934.3949	573.615	ELB1	ELB1
1886	4739.5791	4936.9536	573.816	ELB1	ELB1
1887	4739.1935	4941.5151	575.246	ELB3	ELB3
1888	4737.3264	4945.2343	574.998	ELB4	ELB4
1889	4737.2593	4950.1340	573.391	ELB2	ELB2
1890	4743.4947	4960.7039	573.300	ELB2	ELB2
1891	4748.8916	4956.3863	574.580	ELB4	ELB4
1892	4751.8879	4954.3746	574.651	ELB3	ELB3
1893	4759.0527	4953.4051	573.352	ELB1	ELB1
1894	4755.4024	4966.6396	573.806	ELB1	ELB1
1895	4746.9083	4964.1554	575.156	ELB4	ELB4
1896	4749.6827	4967.1152	575.551	ELB3	ELB3
1897	4738.9668	4965.6235	573.620	ELB2	ELB2
1898	4726.9873	4975.7087	573.769	ELB2	ELB2
1899	4734.7899	4992.5301	573.461	ELB1	ELB1
1900	4719.7691	4988.0519	575.528	ELB3	ELB3
1901	4716.5045	4984.4379	575.580	ELB3	ELB3
1902	4716.5285	4984.4035	575.580	ELB4	ELB4
1903	4721.5740	4975.3360	573.410	ELB2	ELB2
1904	4710.5718	4977.4971	573.329	ELB2	ELB2
1905	4706.3306	4984.7758	573.556	ELB2	ELB2
1906	4710.0679	4991.5366	573.229	ELB2	ELB2
1907	4710.0430	4991.5717	573.228	ELB1	ELB1
1908	4615.9189	4868.2142	573.425	SEL	SEL
1909	4664.0836	4862.0385	573.209	SEL	SEL
1910	4710.2596	4864.8946	574.668	SEL	SEL
1911	4666.8055	4912.6157	573.368	SEL	SEL
1912	4615.3156	4920.2967	573.581	SEL	SEL
1913	4674.5042	4955.1818	573.472	SEL	SEL
1914	4614.6639	4964.0777	573.572	SEL	SEL
1915	4626.5243	4994.6516	573.867	SEL	SEL
1916	4626.5211	4994.6540	573.864	CLF1	CLF1
1917	4667.4884	4996.2060	573.495	SEL	SEL
1918	4667.5026	4996.1918	573.494	CLF1	CLF1
1919	4718.3512	4994.1518	573.385	SEL	SEL
1920	4717.1246	4963.5260	573.256	SEL	SEL
1921	4761.1793	4964.0802	573.237	SEL	SEL

Number	Northing	Easting	Elevation	Raw Desc	Full Desc
1922	4767.1092	4996.6433	573.717	SEL	SEL
1923	4829.2887	4959.4916	573.951	SEL	SEL
1924	4826.9221	4998.4826	573.783	SEL	SEL
1925	4819.9190	4997.5763	573.704	CLF1	CLF1
1926	4819.9172	4997.5685	573.705	MI GATE	MI GATE
1927	4842.9952	4612.7997	574.331	ELB1	ELB1
1928	4851.9891	4611.3467	573.954	ELB1	ELB1
1929	4864.5709	4605.8653	574.745	ELB1	ELB1
1930	4857.7741	4602.2717	574.280	ELB1	ELB1
1931	4853.3997	4604.0384	573.784	ELB1	ELB1
1932	4846.0928	4597.3537	573.657	ELB1	ELB1
1933	4842.0163	4598.1043	573.664	ELB1	ELB1
1934	4832.2107	4606.5598	573.763	ELB1	ELB1
1935	4840.8442	4613.5587	574.148	ELB1	ELB1
1936	4857.6931	4609.5616	576.365	SEL	SEL
1937	4852.7594	4607.3250	574.785	SEL	SEL
1938	4844.3863	4605.2828	576.949	SEL	SEL
1939	4797.1734	4722.7123	576.965	CHK HPT 5	CHK HPT 5
1945	4819.9190	4997.5763	573.704	CLF1	CLF1
1946	4797.1768	4722.7132	576.968	CHK HPT 5	CHK HPT 5
1947	4862.3500	4948.6968	573.851	ELB1	ELB1
1948	4862.3662	4948.7196	573.850	ELB2	ELB2
1949	4865.5346	4957.7273	573.767	ELB1	ELB1
1950	4874.1339	4980.0242	573.367	ELB1	ELB1
1951	4872.5184	4993.3879	573.720	ELB1	ELB1
1952	4861.9164	4997.2873	573.663	ELB1	ELB1
1953	4853.2230	4993.8449	573.650	ELB1	ELB1
1954	4842.6774	4979.3249	573.689	ELB1	ELB1
1955	4839.6849	4960.3771	574.128	ELB1	ELB1
1956	4840.1309	4917.6565	573.832	ELB1	ELB1
1957	4841.1283	4907.1190	574.028	ELB1	ELB1
1958	4841.5464	4902.5729	573.360	ELB1	ELB1
1959	4844.6776	4896.2009	573.721	ELB1	ELB1
1960	4836.6769	4866.3976	574.111	ELB1	ELB1
1961	4835.8255	4816.8478	574.018	ELB1	ELB1
1962	4833.1973	4771.5947	574.329	ELB1	ELB1
1963	4830.3532	4749.5405	573.817	ELB1	ELB1
1964	4829.0483	4743.1560	573.662	ELB1	ELB1
1965	4831.9336	4731.5452	573.647	ELB1	ELB1
1966	4832.7807	4681.1281	573.695	ELB1	ELB1
1967	4835.2686	4654.1560	573.885	ELB1	ELB1
1968	4838.6510	4651.5185	574.326	ELB1	ELB1
1969	4844.0362	4651.7361	574.206	ELB1	ELB1
1970	4849.8220	4655.2126	574.382	ELB1	ELB1
1971	4851.6239	4659.3938	574.703	ELB1	ELB1
1972	4851.4768	4682.8942	573.568	ELB1	ELB1
1973	4854.7698	4714.7203	573.591	ELB1	ELB1
1974	4854.5306	4736.8810	573.380	ELB1	ELB1
1975	4860.4323	4738.9428	573.258	ELB1	ELB1
1976	4863.8954	4729.0947	573.197	ELB1	ELB1
1977	4872.5114	4725.9119	573.106	ELB1	ELB1
1978	4878.3546	4733.5542	572.757	ELB1	ELB1
1979	4883.9513	4749.3662	573.097	ELB1	ELB1
1980	4897.3800	4751.9616	573.233	ELB1	ELB1
1981	4917.6288	4755.3456	572.999	ELB1	ELB1
1982	4925.4731	4758.2880	572.943	ELB1	ELB1
1983	4942.4871	4768.7655	572.762	ELB1	ELB1
1984	4950.9321	4780.9667	573.053	ELB1	ELB1
1985	4943.4917	4785.0832	573.120	ELB1	ELB1
1986	4953.9683	4798.3136	573.288	ELB1	ELB1
1987	4797.1772	4722.7252	576.980	CHK HPT 5	CHK HPT 5
1988	4801.1826	4862.7199	577.163	CHK HPT 6	CHK HPT 6
1989	4878.4809	4945.5941	573.230	ELB2	ELB2

Number	Northing	Easting	Elevation	Raw Desc	Full Desc
1990	4893.3666	4944.6794	573.095	ELB2	ELB2
1991	4912.7037	4932.1942	573.210	ELB2	ELB2
1992	4907.7468	4925.1520	573.510	ELB2	ELB2
1993	4888.6716	4924.3273	573.219	ELB2	ELB2
1994	4899.1732	4916.6758	573.284	ELB2	ELB2
1995	4930.3450	4893.7260	573.255	ELB2	ELB2
1996	4933.4791	4883.5765	573.013	ELB2	ELB2
1997	4926.9275	4879.1668	573.125	ELB2	ELB2
1998	4917.6700	4875.0977	573.148	ELB2	ELB2
1999	4930.9421	4862.6178	573.492	ELB2	ELB2
2000	4933.2092	4855.7012	573.065	ELB2	ELB2
2001	4924.1177	4837.1930	573.097	ELB2	ELB2
2002	4918.1275	4839.0382	573.231	ELB2	ELB2
2003	4873.8007	4997.4527	573.461	SEL	SEL
2004	4875.3913	4946.2865	573.197	SEL	SEL
2005	4924.8502	4998.8573	573.160	SEL	SEL
2006	4925.7137	4950.5637	572.996	SEL	SEL
2007	4978.4160	4998.8873	573.501	SEL	SEL
2008	4978.2671	4998.8289	573.504	ELB100	ELB100
2009	4985.9610	4993.5441	572.067	DCH100	DCH100
2010	4988.1513	4993.7981	572.273	DCH101	DCH101
2011	4998.0974	4994.2915	573.712	ELB101	ELB101
2012	4969.2770	4951.4152	573.248	SEL	SEL
2013	4980.2701	4951.8620	573.062	ELB100	ELB100
2014	4983.3330	4951.6883	572.437	DCH100	DCH100
2015	4991.0033	4953.5246	572.694	DCH101	DCH101
2016	4999.5132	4953.8521	573.738	ELB101	ELB101
2017	4864.6749	4963.8425	573.751	ELB3	ELB3
2018	4863.7090	4975.3187	574.724	ELB3	ELB3
2019	4858.5713	4978.3897	575.354	ELB3	ELB3
2020	4851.7166	4979.3443	575.476	ELB3	ELB3
2021	4842.6180	4979.4336	573.653	ELB3	ELB3
2022	4855.2903	4991.2814	574.443	ELB3	ELB3
2023	4863.2464	4994.0400	574.757	ELB3	ELB3
2024	4868.6518	4989.0390	574.522	ELB3	ELB3
2025	4867.5869	4981.3442	574.734	ELB3	ELB3
2026	4866.8247	4972.4446	573.980	ELB3	ELB3
2027	4855.9417	4970.5515	577.532	ELB3	ELB3
2028	4855.9314	4970.4915	577.527	ELB4	ELB4
2029	4853.2375	4971.1311	577.792	ELB4	ELB4
2030	4850.2695	4964.7504	577.634	ELB4	ELB4
2031	4853.4854	4963.3571	577.227	ELB3	ELB3
2032	4851.2595	4960.2983	577.720	SEL	SEL
2033	4854.8533	4956.2980	576.458	ELB3	ELB3
2034	4846.2977	4946.6968	576.610	ELB4	ELB4
2035	4856.7064	4943.9902	575.584	ELB3	ELB3
2036	4848.5351	4943.4166	575.720	ELB4	ELB4
2037	4848.9620	4936.7974	574.698	SEL	SEL
2038	4855.7979	4936.3167	576.190	ELB4	ELB4
2039	4869.6686	4940.0712	575.894	ELB3	ELB3
2040	4869.5717	4940.0406	575.894	ELB5	ELB5
2041	4875.5682	4942.7071	573.752	ELB5	ELB5
2042	4876.0572	4936.8704	574.106	ELB5	ELB5
2043	4873.6290	4930.8466	573.874	ELB5	ELB5
2044	4868.5842	4932.6831	575.623	ELB3	ELB3
2045	4866.1975	4924.4103	573.603	ELB5	ELB5
2046	4857.9131	4924.4612	575.512	ELB3	ELB3
2047	4870.5036	4922.9477	573.567	ELB5	ELB5
2048	4876.5574	4929.0701	573.761	ELB5	ELB5
2049	4888.6256	4924.3221	573.318	ELB5	ELB5
2050	4885.6316	4920.2669	573.706	SEL	SEL
2051	4878.8591	4922.3859	575.386	SEL	SEL
2052	4875.0003	4920.2394	574.994	SEL	SEL

Number	Northing	Easting	Elevation	Raw Desc	Full Desc
2053	4871.5437	4916.2358	576.507	SEL	SEL
2054	4860.8260	4918.9113	575.314	ELB3	ELB3
2055	4860.8346	4918.8814	575.315	ELB5	ELB5
2056	4863.1688	4915.1971	574.524	ELB5	ELB5
2057	4867.5689	4909.1775	573.865	ELB5	ELB5
2058	4870.2866	4907.8443	573.804	ELB5	ELB5
2059	4868.4797	4902.4966	573.944	ELB5	ELB5
2060	4861.5618	4908.5518	574.410	ELB5	ELB5
2061	4858.4276	4912.9332	574.359	ELB5	ELB5
2062	4860.1870	4916.0634	574.577	ELB5	ELB5
2063	4867.1209	4908.0954	573.570	SEL	SEL
2064	4863.7759	4900.6551	576.240	BRD	BRD
2065	4856.2862	4916.6368	575.735	ELB3	ELB3
2066	4855.7333	4913.5399	575.102	ELB3	ELB3
2067	4857.1380	4909.8813	574.788	ELB3	ELB3
2068	4862.3586	4902.5608	575.129	ELB3	ELB3
2069	4863.0937	4898.5161	575.546	ELB3	ELB3
2070	4861.3028	4896.0852	574.724	ELB3	ELB3
2071	4861.3019	4896.0901	574.724	ELB5	ELB5
2072	4853.6786	4895.7965	573.949	ELB5	ELB5
2073	4853.3319	4903.4298	575.619	ELB3	ELB3
2074	4845.9901	4907.0612	575.874	ELB3	ELB3
2075	4846.4269	4897.7810	573.518	ELB5	ELB5
2076	4844.9203	4895.6079	573.703	ELB5	ELB5
2077	4846.9201	4916.0248	575.919	ELB3	ELB3
2078	4844.8437	4930.7057	575.745	ELB3	ELB3
2079	4844.8528	4930.7279	575.744	ELB4	ELB4
2080	4851.1208	4917.3277	575.643	SEL	SEL
2081	4853.7840	4928.9886	575.723	SEL	SEL
2082	4856.7019	4932.1523	576.375	SEL	SEL
2083	4882.9281	4937.7230	575.138	ELB3	ELB3
2084	4882.9800	4937.7048	575.138	ELB4	ELB4
2085	4883.9236	4939.8548	575.165	ELB3	ELB3
2086	4890.6828	4937.6138	574.632	ELB3	ELB3
2087	4889.4499	4934.8942	575.055	ELB4	ELB4
2088	4895.1125	4932.5723	575.366	ELB4	ELB4
2089	4896.1897	4935.2783	575.464	ELB3	ELB3
2090	4907.3492	4931.7464	574.625	ELB3	ELB3
2091	4905.4880	4929.1077	574.609	ELB3	ELB3
2092	4905.4739	4929.1129	574.610	ELB4	ELB4
2093	4896.8934	4922.5041	572.894	SEL	SEL
2094	4899.2061	4916.7714	573.225	ELB5	ELB5
2095	4897.8737	4911.4088	573.441	ELB5	ELB5
2096	4897.8590	4911.4208	573.443	ELB6	ELB6
2097	4891.2103	4907.2613	573.176	ELB6	ELB6
2098	4892.6214	4906.0575	573.242	ELB6	ELB6
2099	4898.2920	4909.6191	573.522	ELB6	ELB6
2100	4890.7415	4915.1604	575.707	SEL	SEL
2101	4887.2266	4913.4214	575.285	SEL	SEL
2102	4876.3935	4912.7333	575.176	SEL	SEL
2103	4881.2072	4908.8943	576.175	SEL	SEL
2104	4902.0514	4913.2953	574.588	ELB5	ELB5
2105	4906.8055	4904.4966	575.163	ELB5	ELB5
2106	4894.4567	4900.4357	575.585	ELB5	ELB5
2107	4885.9433	4898.3998	575.379	ELB5	ELB5
2108	4887.5998	4902.2860	573.713	SEL	SEL
2109	4868.2786	4888.3075	575.755	ELB5	ELB5
2110	4861.3437	4896.1708	574.756	ELB5	ELB5
2111	4866.3180	4896.2825	575.111	SEL	SEL
2112	4872.4116	4879.2588	576.531	SEL	SEL
2113	4902.0943	4913.1641	574.541	ELB5	ELB5
2114	4911.4159	4910.7905	575.939	ELB5	ELB5
2115	4921.9251	4907.6643	575.887	ELB5	ELB5

Number	Northing	Easting	Elevation	Raw Desc	Full Desc
2116	4925.3758	4893.3268	573.914	ELB5	ELB5
2117	4913.4654	4882.7924	574.244	ELB5	ELB5
2118	4913.4348	4882.8254	574.246	ELB6	ELB6
2119	4908.1524	4875.9177	575.639	ELB5	ELB5
2120	4904.3190	4879.7085	574.318	ELB6	ELB6
2121	4898.5771	4865.0779	573.884	ELB6	ELB6
2122	4901.1764	4862.6208	574.491	ELB6	ELB6
2123	4904.7567	4868.5459	575.838	ELB5	ELB5
2124	4907.8795	4868.3503	576.058	ELB5	ELB5
2125	4912.6597	4866.9121	574.612	ELB5	ELB5
2126	4910.0864	4857.4648	572.761	ELB6	ELB6
2127	4927.0180	4854.2753	574.890	ELB6	ELB6
2128	4927.0143	4854.2800	574.894	ELB5	ELB5
2129	4921.0680	4843.2289	575.337	ELB5	ELB5
2130	4910.6689	4849.0582	575.146	ELB5	ELB5
2131	4903.8966	4855.8168	573.579	SEL	SEL
2132	4893.2645	4869.1957	574.037	ELB8	ELB8
2133	4893.2559	4869.2124	574.050	ELB9	ELB9
2134	4890.1647	4875.6984	575.030	ELB8	ELB8
2135	4895.3412	4883.5421	575.834	ELB8	ELB8
2136	4901.3559	4888.5372	575.510	ELB8	ELB8
2137	4902.7156	4883.0831	573.865	ELB8	ELB8
2138	4902.7084	4883.0925	573.870	ELB9	ELB9
2139	4801.1774	4862.7103	577.172	CHK HPT 6	CHK HPT 6
2140	4852.2402	4948.7349	576.307	CHK HPT 7	CHK HPT 7
2141	4999.4625	4900.3199	573.849	ELB101	ELB101
2142	4993.8913	4900.4094	573.229	DCH101	DCH101
2143	4983.2136	4900.9731	572.669	DCH100	DCH100
2144	4980.1531	4900.5012	573.229	ELB100	ELB100
2145	4949.1771	4895.5888	573.013	SEL	SEL
2146	4944.1539	4852.7599	572.807	SEL	SEL
2147	4979.0226	4851.9384	572.865	ELB100	ELB100
2148	4979.0087	4851.9462	572.866	DCH100	DCH100
2149	4990.5943	4851.9505	572.796	DCH101	DCH101
2150	4990.6033	4851.9461	572.797	ELB100	ELB100
2151	4995.5277	4852.0881	573.631	ELB101	ELB101
2152	4908.4792	4836.9404	574.757	SEL	SEL
2153	4910.7239	4845.4581	573.398	ELB2	ELB2
2154	4897.8731	4846.6758	573.609	ELB2	ELB2
2155	4898.3006	4850.5109	574.856	ELB5	ELB5
2156	4895.9996	4855.0761	575.168	SEL	SEL
2157	4895.4544	4844.8403	573.521	SEL	SEL
2158	4892.3989	4846.9497	574.583	ELB5	ELB5
2159	4893.1272	4835.5712	574.800	ELB5	ELB5
2160	4897.0087	4838.4338	573.626	ELB2	ELB2
2161	4852.2281	4948.6797	576.277	CHK HPT 7	CHK HPT 7
2162	4856.4649	4892.6195	574.377	ELB3	ELB3
2163	4856.4678	4892.5766	574.377	ELB4	ELB4
2164	4842.8222	4876.2912	575.825	ELB3	ELB3
2165	4843.4359	4866.4341	576.101	ELB3	ELB3
2166	4846.6568	4850.2979	576.378	ELB3	ELB3
2167	4846.5619	4843.8509	575.475	ELB3	ELB3
2168	4846.7911	4840.8869	576.565	ELB3	ELB3
2169	4841.9345	4812.9437	575.501	ELB3	ELB3
2170	4843.7758	4796.6704	576.947	ELB3	ELB3
2171	4865.6237	4877.3023	575.666	ELB4	ELB4
2172	4861.9367	4873.9869	577.468	SEL	SEL
2173	4868.3217	4869.1708	574.433	ELB4	ELB4
2174	4862.3977	4862.0757	573.870	ELB4	ELB4
2175	4862.3955	4862.1367	573.869	ELB6	ELB6
2176	4859.8867	4872.1734	577.003	ELB4	ELB4
2177	4853.1062	4870.4344	574.294	ELB6	ELB6
2178	4851.5737	4865.7394	574.118	ELB6	ELB6

Number	Northing	Easting	Elevation	Raw Desc	Full Desc
2179	4863.6613	4858.1554	573.840	ELB6	ELB6
2180	4849.0194	4874.0993	575.792	ELB4	ELB4
2181	4846.3053	4868.9236	577.270	ELB4	ELB4
2182	4848.4069	4863.9653	575.221	ELB4	ELB4
2183	4851.8357	4850.9090	576.357	ELB4	ELB4
2184	4860.8896	4851.6113	574.032	ELB6	ELB6
2185	4864.1404	4843.8688	573.405	ELB6	ELB6
2186	4859.8932	4835.5698	573.439	ELB6	ELB6
2187	4852.2872	4844.1552	575.304	ELB4	ELB4
2188	4851.6083	4839.7838	576.326	ELB4	ELB4
2189	4857.2333	4814.4814	574.604	ELB4	ELB4
2190	4857.2366	4814.4576	574.605	ELB6	ELB6
2191	4865.8999	4830.1347	572.916	ELB6	ELB6
2192	4866.4208	4845.8161	573.233	ELB6	ELB6
2193	4872.2686	4827.6414	574.751	SEL	SEL
2194	4877.8123	4826.3963	573.772	SEL	SEL
2195	4878.2994	4815.2136	573.544	SEL	SEL
2196	4886.7042	4815.6179	574.879	SEL	SEL
2197	4855.1021	4797.2961	575.458	ELB4	ELB4
2198	4852.0068	4785.2166	576.355	ELB4	ELB4
2199	4852.0017	4785.2296	576.354	ELB3	ELB3
2200	4914.4861	4822.2642	575.125	ELB5	ELB5
2201	4914.8097	4827.2634	573.267	ELB2	ELB2
2202	4923.1939	4824.9451	574.970	ELB5	ELB5
2203	4925.7576	4827.9334	574.290	ELB5	ELB5
2204	4928.7297	4832.3254	575.059	ELB5	ELB5
2205	4925.0784	4835.9263	573.145	ELB2	ELB2
2206	4936.5175	4839.4773	573.151	ELB2	ELB2
2207	4946.5441	4836.5190	573.388	ELB2	ELB2
2208	4935.4060	4832.8264	574.619	ELB2	ELB2
2209	4940.4624	4830.0327	575.201	ELB2	ELB2
2210	4946.2948	4825.8668	573.348	ELB2	ELB2
2211	4940.5948	4821.6592	574.880	ELB5	ELB5
2212	4949.7306	4818.8924	575.485	ELB5	ELB5
2213	4953.8768	4820.2524	573.601	ELB2	ELB2
2214	4952.7807	4813.7075	573.420	ELB2	ELB2
2215	4948.0540	4815.5019	575.348	ELB5	ELB5
2216	4945.2959	4810.4338	573.489	ELB5	ELB5
2217	4945.2480	4810.3960	573.490	ELB2	ELB2
2218	4949.6195	4799.4201	575.230	ELB5	ELB5
2219	4954.2113	4800.8645	573.516	ELB2	ELB2
2220	4954.2140	4800.8661	573.521	ELB1	ELB1
2221	4936.4156	4802.8080	575.528	ELB6	ELB6
2222	4934.3082	4798.6608	574.561	ELB6	ELB6
2223	4932.7779	4795.8500	575.296	ELB6	ELB6
2224	4923.5159	4792.6481	575.383	ELB6	ELB6
2225	4924.6057	4789.9889	575.802	ELB6	ELB6
2226	4919.2246	4794.7964	574.732	ELB6	ELB6
2227	4916.9084	4797.8210	575.529	ELB6	ELB6
2228	4914.9101	4799.3387	575.470	ELB6	ELB6
2229	4912.1261	4802.3790	574.045	ELB6	ELB6
2230	4910.3744	4805.9327	574.594	ELB6	ELB6
2231	4917.5884	4812.6302	575.189	ELB6	ELB6
2232	4926.9790	4814.0046	575.817	ELB6	ELB6
2233	4924.2970	4807.8657	572.911	ELB6	ELB6
2234	4929.6511	4802.1189	572.896	ELB6	ELB6
2235	4927.6046	4800.4505	572.818	ELB6	ELB6
2236	4920.3106	4802.8746	572.902	ELB6	ELB6
2237	4912.8803	4794.6520	575.114	ELB6	ELB6
2238	4904.8529	4791.0793	575.789	ELB6	ELB6
2239	4912.8431	4778.3362	575.318	ELB6	ELB6
2240	4915.8355	4779.9428	574.810	ELB6	ELB6
2241	4918.4236	4783.2254	575.537	ELB6	ELB6

Number	Northing	Easting	Elevation	Raw Desc	Full Desc
2242	4921.3308	4786.5512	574.833	ELB6	ELB6
2243	4921.0900	4790.2485	575.107	ELB6	ELB6
2244	4917.8572	4793.6339	574.790	ELB6	ELB6
2245	4914.7050	4788.6018	572.980	SEL	SEL
2246	4943.4741	4785.5323	573.069	ELB6	ELB6
2247	4935.0289	4787.3703	573.554	ELB6	ELB6
2248	4935.5718	4784.9963	573.363	ELB6	ELB6
2249	4934.1689	4791.4679	575.407	ELB5	ELB5
2250	4929.1127	4788.0482	574.046	ELB5	ELB5
2251	4933.0542	4781.1403	575.426	ELB5	ELB5
2252	4937.4096	4776.2276	575.611	ELB5	ELB5
2253	4920.1403	4772.1810	576.135	ELB5	ELB5
2254	4914.2264	4771.2958	576.058	SEL	SEL
2255	4915.5397	4766.9870	574.776	SEL	SEL
2256	4917.1757	4763.0288	575.569	SEL	SEL
2257	4920.2733	4764.1579	575.399	ELB5	ELB5
2258	4916.4810	4761.3301	575.416	ELB5	ELB5
2259	4912.8885	4759.3265	573.929	ELB5	ELB5
2260	4912.8915	4759.3272	573.929	ELB6	ELB6
2261	4909.7317	4764.4170	573.237	ELB6	ELB6
2262	4906.6497	4768.9667	572.933	ELB6	ELB6
2263	4903.9848	4765.8594	572.545	ELB6	ELB6
2264	4909.6868	4761.7389	573.634	ELB6	ELB6
2265	4913.0126	4766.2507	574.627	ELB5	ELB5
2266	4912.6436	4771.6860	575.859	ELB5	ELB5
2267	4904.7334	4775.8531	574.968	ELB5	ELB5
2268	4898.4144	4769.0328	574.462	ELB5	ELB5
2269	4894.1258	4770.6501	574.235	SEL	SEL
2270	4890.1616	4775.7087	575.469	SEL	SEL
2271	4883.3009	4769.7076	575.854	SEL	SEL
2272	4885.7895	4764.0383	573.940	SEL	SEL
2273	4888.3391	4760.2905	575.368	SEL	SEL
2274	4897.3872	4757.7204	575.377	ELB5	ELB5
2275	4887.0386	4755.0509	575.128	ELB5	ELB5
2276	4877.4120	4748.4504	575.392	ELB5	ELB5
2277	4869.6197	4734.8978	575.755	SEL	SEL
2278	4860.4647	4739.0948	573.204	ELB1	ELB1
2279	4866.5972	4741.0429	573.506	ELB1	ELB1
2280	4870.6326	4740.7584	573.467	ELB1	ELB1
2281	4878.4502	4733.3378	572.710	ELB1	ELB1
2282	4855.2129	4743.9734	575.790	ELB5	ELB5
2283	4847.3545	4739.1183	576.098	ELB5	ELB5
2284	4851.4475	4751.3224	575.007	SEL	SEL
2285	4856.0724	4754.4133	576.363	SEL	SEL
2286	4854.3580	4759.9651	575.858	SEL	SEL
2287	4854.6581	4764.4635	576.640	SEL	SEL
2288	4857.4816	4767.7044	575.842	SEL	SEL
2289	4861.6983	4771.1641	576.323	SEL	SEL
2290	4854.6882	4774.5042	574.919	SEL	SEL
2291	4863.5137	4791.1829	575.012	SEL	SEL
2292	4866.7765	4795.0775	573.423	SEL	SEL
2293	4875.4553	4789.8214	573.474	SEL	SEL
2294	4884.2800	4782.6739	575.037	SEL	SEL
2295	4878.2746	4776.7314	573.756	SEL	SEL
2296	4883.8273	4769.6168	575.824	SEL	SEL
2297	4886.7821	4764.2758	573.964	SEL	SEL
2298	4887.9562	4760.2597	575.358	SEL	SEL
2299	4876.8051	4763.7214	573.782	SEL	SEL
2300	4870.7794	4760.0584	575.671	SEL	SEL
2301	4864.9493	4755.6195	574.083	SEL	SEL
2302	4846.5669	4757.7691	575.834	SEL	SEL
2303	4841.0278	4768.1240	575.594	ELB3	ELB3
2304	4840.2816	4750.0810	575.988	ELB3	ELB3

Number	Northing	Easting	Elevation	Raw Desc	Full Desc
2305	4839.2703	4739.6133	575.949	ELB3	ELB3
2306	4842.3404	4728.5132	575.503	ELB5	ELB5
2307	4839.4470	4728.1109	575.605	ELB5	ELB5
2308	4840.3264	4722.9486	577.536	ELB5	ELB5
2309	4842.3651	4722.9889	577.706	ELB5	ELB5
2310	4844.1936	4719.8986	576.807	ELB5	ELB5
2311	4842.7790	4718.2359	576.915	ELB3	ELB3
2312	4846.9289	4712.9863	576.795	ELB5	ELB5
2313	4843.5685	4706.6656	576.634	ELB5	ELB5
2314	4843.5902	4706.7050	576.633	ELB3	ELB3
2315	4844.2477	4682.4076	576.532	ELB3	ELB3
2316	4844.2445	4682.3960	576.532	ELB5	ELB5
2317	4847.0321	4664.5161	575.905	ELB3	ELB3
2318	4841.5656	4655.5557	576.212	ELB3	ELB3
2319	4840.2140	4667.2915	575.691	ELB3	ELB3
2320	4840.2279	4667.3344	575.691	ELB5	ELB5
2321	4993.3768	4742.0025	574.200	ELB101	ELB101
2322	4982.3011	4741.4346	572.710	ELB100	ELB100
2323	4944.8358	4742.0048	572.594	SEL	SEL
2324	4904.1270	4742.9096	572.912	SEL	SEL
2325	4992.7826	4704.6700	573.644	ELB101	ELB101
2326	4985.3197	4706.1790	572.822	ELB100	ELB100
2327	4950.1560	4706.8801	572.726	SEL	SEL
2328	4908.8250	4706.6372	572.740	SEL	SEL
2329	4861.5333	4711.4375	573.063	SEL	SEL
2330	4996.3425	4652.6127	573.569	ELB101	ELB101
2331	4987.1719	4652.6937	572.281	ELB100	ELB100
2332	4950.9136	4654.9911	572.913	SEL	SEL
2333	4893.8365	4657.9923	572.756	SEL	SEL
2334	4856.8696	4667.0590	573.347	SEL	SEL
2335	4797.2095	4722.7068	576.976	CHK HPT 5	CHK HPT 5
2337	4856.7354	4663.7281	573.487	ELB1	ELB1
2338	4856.7533	4663.6740	573.490	ELB2	ELB2
2339	4852.5800	4658.6239	574.613	ELB2	ELB2
2340	4853.8105	4645.8935	574.619	ELB2	ELB2
2341	4853.7583	4645.8837	574.620	ELB3	ELB3
2342	4859.0270	4641.9901	575.569	ELB2	ELB2
2343	4860.1951	4635.5118	574.530	ELB3	ELB3
2344	4862.8480	4635.1279	574.956	ELB3	ELB3
2345	4862.8536	4635.1129	574.956	ELB2	ELB2
2346	4868.2433	4637.6943	573.231	ELB1	ELB1
2347	4870.3965	4629.8044	573.088	ELB1	ELB1
2348	4871.6491	4622.7232	573.274	ELB1	ELB1
2349	4860.1480	4639.5005	575.764	SEL	SEL
2350	4865.6689	4624.0894	575.755	SEL	SEL
2351	4864.9316	4626.5358	575.087	ELB2	ELB2
2352	4864.9210	4626.5606	575.088	ELB3	ELB3
2353	4862.4536	4621.8835	574.261	ELB3	ELB3
2354	4866.8489	4618.0000	574.548	ELB3	ELB3
2355	4869.1592	4621.7107	574.525	ELB2	ELB2
2356	4870.4429	4618.7901	574.682	ELB2	ELB2
2357	4870.4500	4618.7703	574.683	ELB3	ELB3
2358	4875.4608	4614.0277	574.986	ELB2	ELB2
2359	4879.2181	4615.1187	573.101	ELB1	ELB1
2360	4885.1546	4606.6774	572.990	ELB1	ELB1
2361	4882.5162	4603.6839	574.009	ELB2	ELB2
2362	4882.5992	4603.6460	574.009	ELB3	ELB3
2363	4885.9500	4602.0485	576.077	SEL	SEL
2364	4882.7110	4600.5876	574.535	ELB3	ELB3
2365	4886.9349	4604.4260	574.405	ELB2	ELB2
2366	4885.6273	4606.6776	572.863	ELB1	ELB1
2367	4893.5974	4607.2813	572.781	ELB1	ELB1
2368	4886.7254	4598.1249	574.536	ELB3	ELB3

Number	Northing	Easting	Elevation	Raw Desc	Full Desc
2369	4891.1916	4592.3566	574.021	ELB3	ELB3
2370	4895.2159	4595.2854	573.723	ELB3	ELB3
2371	4893.0450	4603.3299	574.151	ELB2	ELB2
2372	4894.9185	4604.7955	573.041	ELB1	ELB1
2373	4898.0579	4600.7119	572.948	ELB1	ELB1
2374	4898.0535	4600.7041	572.948	ELB2	ELB2
2375	4898.0475	4600.6937	572.948	ELB3	ELB3
2376	4896.6799	4598.4082	573.663	ELB3	ELB3
2377	4896.6653	4598.3820	573.663	ELB2	ELB2
2378	4896.2861	4593.7088	573.821	ELB3	ELB3
2379	4902.3269	4597.6367	574.577	ELB2	ELB2
2380	4903.9062	4594.5894	574.958	ELB2	ELB2
2381	4905.8117	4600.7236	572.765	ELB1	ELB1
2382	4908.1987	4594.4133	572.937	ELB1	ELB1
2383	4901.5939	4587.9235	572.921	ELB1	ELB1
2384	4897.2363	4589.7579	573.655	ELB2	ELB2
2385	4897.2091	4589.7314	573.655	ELB3	ELB3
2386	4901.0702	4594.5001	575.004	SEL	SEL
2387	4893.6808	4600.9798	574.806	SEL	SEL
2388	4890.4799	4594.4797	575.469	SEL	SEL
2389	4885.3170	4601.5872	576.069	SEL	SEL
2390	4882.7348	4587.1415	575.526	SEL	SEL
2391	4873.3069	4580.2192	574.101	SEL	SEL
2392	4888.3949	4585.7759	574.258	ELB2	ELB2
2393	4892.6336	4579.9743	573.025	ELB1	ELB1
2394	4885.9320	4573.4819	573.165	ELB1	ELB1
2395	4885.1686	4574.8671	573.950	ELB2	ELB2
2396	4875.2738	4568.8392	573.399	ELB2	ELB2
2397	4875.3017	4568.8649	573.401	ELB1	ELB1
2398	4849.5450	4589.7410	573.705	SEL	SEL
2399	4815.5568	4606.6830	573.879	SEL	SEL
2400	4843.1040	4635.3217	573.557	SEL	SEL
2401	4865.0853	4615.3765	574.244	SEL	SEL
2402	4876.2167	4600.7479	574.555	SEL	SEL
2403	4994.4405	4600.4119	573.761	ELB101	ELB101
2404	4987.2464	4599.3786	572.888	ELB100	ELB100
2405	4946.5791	4605.7888	572.719	SEL	SEL
2406	4901.8375	4605.8187	572.578	SEL	SEL
2407	4986.5661	4557.8336	572.034	ELB100	ELB100
2408	4986.5769	4557.8314	572.033	DCH101	DCH101
2409	4986.5799	4557.8309	572.034	DCH100	DCH100
2410	4986.6162	4557.8237	572.034	ELB100	ELB100
2411	4982.2898	4551.6767	572.513	ELB100	ELB100
2412	4985.5970	4550.9026	571.665	DCH100	DCH100
2413	4988.3839	4550.2007	571.752	DCH101	DCH101
2414	4991.9121	4551.4098	573.323	ELB101	ELB101
2415	4947.8999	4553.2997	572.724	SEL	SEL
2416	4908.3188	4542.9356	573.099	SEL	SEL
2417	4866.5128	4748.3983	576.303	CHK HPT 8	CHK HPT 8
2418	4866.5159	4748.3397	576.265	CHK HPT 8	CHK HPT 8
2419	4875.2827	4569.0800	573.325	ELB1	ELB1
2420	4875.2895	4569.0860	573.326	ELB2	ELB2
2421	4875.2672	4569.0659	573.324	ELB3	ELB3
2422	4872.2548	4569.2686	574.596	ELB3	ELB3
2423	4872.3488	4569.1978	574.594	ELB4	ELB4
2424	4871.2630	4575.0433	574.940	ELB3	ELB3
2425	4873.8261	4577.3032	573.915	ELB1	ELB1
2426	4861.6714	4580.9521	573.601	ELB1	ELB1
2427	4863.0520	4576.1931	576.004	ELB3	ELB3
2428	4852.7077	4570.7050	576.138	ELB3	ELB3
2429	4852.0361	4576.9891	573.594	ELB1	ELB1
2430	4837.0416	4573.1839	574.027	ELB1	ELB1
2431	4839.8710	4564.6453	575.757	ELB3	ELB3

Number	Northing	Easting	Elevation	Raw Desc	Full Desc
2432	4825.9183	4551.6290	575.950	ELB3	ELB3
2433	4821.4179	4560.7232	574.294	ELB1	ELB1
2434	4817.7081	4551.4492	574.170	ELB1	ELB1
2435	4826.4399	4534.0064	574.056	ELB1	ELB1
2436	4832.3941	4536.8063	576.434	ELB3	ELB3
2437	4837.7096	4530.2333	575.011	ELB3	ELB3
2438	4841.2391	4527.1156	575.193	ELB3	ELB3
2439	4838.8960	4521.4814	574.025	ELB1	ELB1
2440	4846.2339	4519.1750	574.162	ELB1	ELB1
2441	4847.1523	4524.5906	576.037	ELB3	ELB3
2442	4871.4052	4529.7419	574.232	ELB3	ELB3
2443	4871.4013	4529.7274	574.232	ELB1	ELB1
2444	4886.2534	4528.0119	575.720	ELB3	ELB3
2445	4886.8875	4524.4709	574.557	ELB1	ELB1
2446	4903.0904	4520.0552	574.977	ELB1	ELB1
2447	4903.0918	4520.0505	574.977	ELB3	ELB3
2448	4881.3285	4553.3149	572.953	ELB2	ELB2
2449	4874.1761	4550.9925	575.084	ELB4	ELB4
2450	4890.4259	4542.1062	575.435	ELB4	ELB4
2451	4892.8589	4546.2762	573.265	ELB2	ELB2
2452	4908.4748	4538.6378	572.948	ELB2	ELB2
2453	4908.7493	4533.2265	574.884	ELB4	ELB4
2454	4916.6742	4529.6411	575.815	ELB4	ELB4
2455	4922.7935	4534.7612	572.988	ELB2	ELB2
2456	4932.2472	4526.6328	572.876	ELB2	ELB2
2457	4932.5237	4522.4783	572.640	ELB2	ELB2
2458	4931.1367	4517.8341	575.853	ELB4	ELB4
2459	4941.6081	4519.3146	574.726	ELB4	ELB4
2460	4942.2170	4521.7230	573.079	ELB2	ELB2
2461	4900.9928	4525.7593	575.317	SEL	SEL
2462	4889.8171	4532.3930	575.464	SEL	SEL
2463	4878.0581	4536.8029	574.699	SEL	SEL
2464	4869.5954	4542.3224	576.174	SEL	SEL
2465	4842.6543	4534.0658	575.257	SEL	SEL
2466	4845.5530	4537.6392	576.026	SEL	SEL
2467	4849.8157	4547.9919	575.936	SEL	SEL
2468	4851.0895	4564.9926	575.781	SEL	SEL
2469	4836.2480	4546.6571	576.119	SEL	SEL
2470	4866.5102	4748.3843	576.270	CHK HPT 8	CHK HPT 8
2471	4885.1420	4577.9821	574.399	CHK HPT 9	CHK HPT 9
2472	4960.1284	4504.3013	572.910	ELB4	ELB4
2473	4964.8510	4491.7332	573.294	ELB2	ELB2
2474	4961.3465	4492.2972	575.036	ELB4	ELB4
2475	4960.8874	4486.6891	575.579	ELB4	ELB4
2476	4968.0143	4478.4756	574.588	ELB4	ELB4
2477	4971.9957	4477.8502	573.811	ELB2	ELB2
2478	4967.7547	4458.7146	576.615	ELB4	ELB4
2479	4967.9883	4458.7014	576.618	ELB5	ELB5
2480	4961.0868	4456.0177	576.742	ELB5	ELB5
2481	4957.4202	4458.4035	577.865	ELB5	ELB5
2482	4956.5714	4462.6148	576.790	ELB5	ELB5
2483	4961.3100	4465.1846	577.016	ELB5	ELB5
2484	4964.8033	4464.5180	576.184	ELB5	ELB5
2485	4962.3081	4461.2419	575.738	SEL	SEL
2486	4975.0260	4460.0391	574.005	ELB2	ELB2
2487	4983.0386	4448.2738	573.382	ELB2	ELB2
2488	4974.4538	4446.6778	576.064	ELB4	ELB4
2489	4968.6307	4423.2430	576.771	ELB4	ELB4
2490	4975.8622	4418.1356	573.529	ELB2	ELB2
2491	4967.0383	4410.1715	573.783	ELB2	ELB2
2492	4959.4361	4418.5165	576.052	ELB4	ELB4
2493	4953.3974	4409.2997	575.285	ELB4	ELB4
2494	4959.6142	4404.2400	573.971	ELB2	ELB2

Number	Northing	Easting	Elevation	Raw Desc	Full Desc
2495	4963.0144	4393.6667	573.769	ELB2	ELB2
2496	4963.0836	4393.5749	573.767	ELB3	ELB3
2497	4960.1516	4395.4492	575.041	ELB4	ELB4
2498	4964.8484	4394.1221	573.498	ELB3	ELB3
2499	4964.8657	4394.1001	573.498	ELB5	ELB5
2500	4969.1895	4392.4073	574.388	ELB5	ELB5
2501	4970.2755	4396.5826	572.839	ELB3	ELB3
2502	4975.2161	4391.9319	573.811	ELB3	ELB3
2503	4975.2155	4391.9327	573.811	ELB5	ELB5
2504	4970.3460	4382.6630	573.950	ELB3	ELB3
2505	4970.3204	4382.6975	573.950	ELB5	ELB5
2506	4963.9013	4384.9316	574.540	ELB3	ELB3
2507	4962.4928	4382.7854	573.406	ELB5	ELB5
2508	4959.8221	4383.9333	573.471	ELB5	ELB5
2509	4959.7845	4383.9948	573.471	ELB3	ELB3
2510	4959.7640	4384.0279	573.472	ELB2	ELB2
2511	4966.6259	4387.0153	574.780	SEL	SEL
2512	4967.4796	4389.3848	574.114	SEL	SEL
2513	4968.1180	4391.4046	574.571	SEL	SEL
2514	4954.2834	4386.4775	575.306	ELB4	ELB4
2515	4944.1576	4378.9521	576.247	ELB4	ELB4
2516	4945.8449	4371.3336	573.677	ELB2	ELB2
2517	4928.7283	4371.9969	573.868	ELB2	ELB2
2518	4926.6584	4375.8144	575.424	ELB4	ELB4
2519	4925.5153	4360.8305	575.145	ELB4	ELB4
2520	4926.7792	4351.9748	573.620	ELB2	ELB2
2521	4889.7002	4350.6290	573.891	ELB2	ELB2
2522	4890.6068	4354.3957	574.912	ELB4	ELB4
2523	4869.3799	4355.6611	573.669	ELB4	ELB4
2524	4869.3859	4355.6749	573.670	ELB2	ELB2
2525	4984.4558	4502.5437	572.177	ELB100	ELB100
2526	4986.4862	4503.7199	571.566	DCH100	DCH100
2527	4989.4749	4504.6865	571.782	DCH101	DCH101
2528	4996.0333	4505.4934	573.593	ELB101	ELB101
2529	4965.7125	4499.5617	572.740	SEL	SEL
2530	4996.2432	4456.4485	573.162	ELB101	ELB101
2531	4991.2706	4455.1265	571.977	DCH101	DCH101
2532	4989.2908	4454.7273	571.894	DCH100	DCH100
2533	4983.2523	4455.2994	573.476	ELB100	ELB100
2534	4994.8050	4431.1540	573.359	ELB101	ELB101
2535	4994.8059	4431.1536	573.359	DCH101	DCH101
2536	4990.0225	4429.8077	572.954	ELB101	ELB101
2537	4990.0030	4429.8156	572.953	ELB100	ELB100
2538	4989.9771	4429.8263	572.953	DCH100	DCH100
2539	4986.6963	4431.8959	573.549	SEL	SEL
2540	4966.6663	4398.6310	573.001	SEL	SEL
2541	4999.7627	4358.7140	575.584	SEL	SEL
2542	4999.7440	4358.7572	575.576	ELB1	ELB1
2543	4999.8221	4344.6012	576.863	SEL	SEL
2544	4999.8197	4344.6044	576.863	ELB2	ELB2
2545	4991.8946	4353.2198	575.195	ELB1	ELB1
2546	4985.8262	4369.3591	574.239	SEL	SEL
2547	4958.8503	4348.0079	574.647	ELB1	ELB1
2548	4948.0380	4356.5825	573.405	ELB1	ELB1
2549	4949.7439	4335.7920	575.901	ELB2	ELB2
2550	4884.1639	4520.9420	574.343	ELB3	ELB3
2551	4884.1622	4520.9456	574.343	ELB4	ELB4
2552	4860.6837	4516.8962	573.539	ELB3	ELB3
2553	4863.9452	4512.3259	574.854	ELB4	ELB4
2554	4859.5964	4513.9080	573.661	ELB4	ELB4
2555	4859.5988	4513.9047	573.662	ELB3	ELB3
2556	4857.6283	4513.0539	573.885	ELB3	ELB3
2557	4851.0911	4512.8717	574.023	ELB3	ELB3

Number	Northing	Easting	Elevation	Raw Desc	Full Desc
2558	4849.1081	4504.9375	573.540	ELB3	ELB3
2559	4855.7270	4496.1940	574.249	ELB3	ELB3
2560	4855.6945	4496.2521	574.249	ELB4	ELB4
2561	4866.5502	4480.2842	574.386	ELB4	ELB4
2562	4866.0223	4470.1321	574.629	ELB4	ELB4
2563	4876.2715	4468.7168	575.205	ELB4	ELB4
2564	4876.2921	4468.7127	575.205	ELB6	ELB6
2565	4880.5394	4480.2423	575.130	ELB6	ELB6
2566	4880.5945	4480.2099	575.133	ELB4	ELB4
2567	4878.5201	4488.7864	574.676	ELB4	ELB4
2568	4864.2562	4502.0214	574.578	ELB4	ELB4
2569	4864.2591	4502.0170	574.579	ELB6	ELB6
2570	4890.5021	4479.3946	575.195	ELB6	ELB6
2571	4903.0036	4475.0427	575.525	ELB6	ELB6
2572	4896.1058	4459.4115	575.421	ELB6	ELB6
2573	4893.2427	4462.9459	574.214	ELB6	ELB6
2574	4895.8910	4471.1444	574.153	ELB6	ELB6
2575	4889.1112	4472.3481	574.199	ELB6	ELB6
2576	4885.3222	4475.0226	573.574	ELB6	ELB6
2577	4881.9208	4470.9340	573.713	ELB6	ELB6
2578	4890.0002	4469.6747	574.023	ELB6	ELB6
2579	4894.5191	4497.4695	575.409	ELB6	ELB6
2580	4890.2529	4486.9411	574.743	ELB6	ELB6
2581	4879.8325	4491.8107	575.090	ELB6	ELB6
2582	4877.0035	4500.1125	575.229	ELB6	ELB6
2583	4881.7170	4508.4586	574.709	ELB6	ELB6
2584	4892.0007	4510.3628	573.985	ELB6	ELB6
2585	4892.0118	4510.3350	573.986	ELB7	ELB7
2586	4898.6715	4503.8161	575.196	ELB6	ELB6
2587	4883.3125	4500.0468	573.670	ELB7	ELB7
2588	4885.8182	4496.8150	573.678	ELB7	ELB7
2589	4891.0280	4501.8970	573.891	ELB7	ELB7
2590	4938.9046	4499.0458	574.579	ELB6	ELB6
2591	4934.5278	4493.0666	575.064	ELB6	ELB6
2592	4934.5116	4493.0450	575.065	ELB7	ELB7
2593	4937.2473	4486.9356	577.097	ELB7	ELB7
2594	4932.8098	4480.3450	575.215	ELB7	ELB7
2595	4925.3311	4483.5158	575.655	ELB7	ELB7
2596	4919.9859	4490.2283	575.193	ELB7	ELB7
2597	4924.6110	4496.4065	575.623	ELB7	ELB7
2598	4927.1327	4497.7867	575.698	ELB7	ELB7
2599	4927.1291	4497.7785	575.697	ELB6	ELB6
2600	4928.3251	4500.7994	575.480	ELB6	ELB6
2601	4935.0168	4503.2362	574.786	ELB6	ELB6
2602	4939.5931	4499.5820	574.563	ELB6	ELB6
2603	4935.2661	4493.8287	575.092	ELB6	ELB6
2604	4934.7731	4498.1694	576.032	SEL	SEL
2605	4930.2788	4497.9076	576.766	SEL	SEL
2606	4929.3581	4489.3649	574.420	SEL	SEL
2607	4932.8084	4480.4114	575.212	ELB6	ELB6
2608	4941.2039	4484.3764	577.030	ELB6	ELB6
2609	4948.5794	4483.8574	577.189	ELB6	ELB6
2610	4953.9099	4483.8871	576.202	ELB6	ELB6
2611	4953.8770	4483.8702	576.203	ELB7	ELB7
2612	4953.8953	4483.8167	576.202	ELB8	ELB8
2613	4953.8490	4483.7931	576.202	ELB9	ELB9
2614	4953.1684	4491.9611	574.887	ELB7	ELB7
2615	4949.6566	4495.2733	574.597	ELB7	ELB7
2616	4943.0965	4491.7127	575.008	ELB7	ELB7
2617	4935.2840	4490.9178	575.298	ELB7	ELB7
2618	4947.8132	4488.3405	577.356	ELB6	ELB6
2619	4937.6946	4487.1050	577.064	ELB6	ELB6
2620	4946.1187	4481.6544	576.729	ELB8	ELB8

Number	Northing	Easting	Elevation	Raw Desc	Full Desc
2621	4937.3760	4476.5664	574.667	ELB8	ELB8
2622	4938.1556	4475.8742	574.659	ELB8	ELB8
2623	4938.1604	4475.7662	574.661	ELB10	ELB10
2624	4947.2729	4479.8090	576.578	ELB8	ELB8
2625	4934.2086	4476.2928	575.248	ELB10	ELB10
2626	4933.1559	4472.3227	574.978	ELB10	ELB10
2627	4935.5738	4469.0555	575.698	ELB10	ELB10
2628	4938.9851	4470.8264	575.189	ELB10	ELB10
2629	4939.0346	4470.8421	575.188	ELB10	ELB10
2630	4936.7810	4473.9921	574.403	SEL	SEL
2631	4961.2803	4477.1800	575.346	ELB9	ELB9
2632	4969.6613	4470.8084	575.208	ELB9	ELB9
2633	4966.5961	4464.3490	575.980	ELB9	ELB9
2634	4960.7584	4461.7748	575.726	ELB9	ELB9
2635	4962.5292	4460.3531	575.724	ELB9	ELB9
2636	4967.6221	4458.8335	576.640	ELB9	ELB9
2637	4961.8041	4456.0977	576.658	ELB9	ELB9
2638	4956.6870	4455.7290	577.850	ELB9	ELB9
2639	4940.3028	4470.9673	575.609	ELB10	ELB10
2640	4943.8472	4465.9908	576.375	ELB10	ELB10
2641	4950.3801	4455.2069	576.859	ELB10	ELB10
2642	4954.9677	4453.9009	577.531	ELB10	ELB10
2643	4956.7259	4455.6486	577.855	ELB10	ELB10
2644	4956.6902	4455.6537	577.856	ELB9	ELB9
2645	4952.0215	4461.2282	577.446	ELB9	ELB9
2646	4949.5425	4468.3021	576.724	ELB9	ELB9
2647	4947.6271	4474.0574	577.945	ELB9	ELB9
2648	4954.8584	4478.1277	577.555	ELB9	ELB9
2649	4959.4367	4468.3309	577.918	ELB9	ELB9
2650	4958.4993	4462.6654	576.441	ELB9	ELB9
2651	4957.3215	4458.1630	577.849	ELB9	ELB9
2652	4956.7619	4455.7821	577.857	ELB9	ELB9
2653	4953.3346	4464.4032	576.507	SEL	SEL
2654	4955.5170	4469.5696	578.023	SEL	SEL
2655	4940.7974	4449.0910	575.980	ELB6	ELB6
2656	4941.2703	4443.3139	576.210	ELB6	ELB6
2657	4938.9549	4442.4965	576.193	ELB6	ELB6
2658	4934.0878	4448.8898	575.650	ELB6	ELB6
2659	4937.9462	4452.5739	575.957	ELB6	ELB6
2660	4937.3370	4448.7134	574.935	SEL	SEL
2661	4929.4663	4456.2545	575.643	ELB6	ELB6
2662	4916.6000	4455.8309	576.224	ELB6	ELB6
2663	4914.3435	4462.8655	575.664	ELB6	ELB6
2664	4919.8476	4467.7126	575.903	ELB6	ELB6
2665	4926.8228	4468.2001	575.730	ELB6	ELB6
2666	4930.6886	4460.5144	575.484	ELB6	ELB6
2667	4926.4285	4461.2912	574.813	ELB6	ELB6
2668	4920.8925	4458.5134	574.817	ELB6	ELB6
2669	4919.7862	4461.8608	574.597	ELB6	ELB6
2670	4922.6895	4464.2794	574.610	ELB6	ELB6
2671	4914.6421	4444.3017	576.090	ELB6	ELB6
2672	4912.8957	4437.7413	575.911	ELB6	ELB6
2673	4904.6693	4437.4737	576.009	ELB6	ELB6
2674	4900.7691	4445.4487	575.451	ELB6	ELB6
2675	4907.0568	4447.0637	575.447	ELB6	ELB6
2676	4911.0807	4446.5405	576.596	ELB6	ELB6
2677	4909.0437	4441.9213	574.970	SEL	SEL
2678	4956.1357	4432.0027	576.806	ELB6	ELB6
2679	4956.0992	4432.0273	576.806	ELB7	ELB7
2680	4956.0148	4436.7616	576.463	ELB7	ELB7
2681	4959.3948	4441.1664	575.670	ELB7	ELB7
2682	4956.5431	4440.8778	575.210	SEL	SEL
2683	4950.9345	4443.7646	575.913	SEL	SEL

Number	Northing	Easting	Elevation	Raw Desc	Full Desc
2684	4967.3247	4435.1230	575.920	ELB7	ELB7
2685	4958.6124	4427.8915	576.121	ELB7	ELB7
2686	4958.6157	4427.8892	576.123	ELB6	ELB6
2687	4955.3006	4421.4902	576.249	ELB6	ELB6
2688	4950.0388	4418.8907	575.625	ELB6	ELB6
2689	4947.4556	4422.8665	576.799	ELB6	ELB6
2690	4947.9652	4431.9515	576.652	ELB6	ELB6
2691	4950.1099	4426.6343	577.581	SEL	SEL
2692	4959.2720	4434.3509	577.847	SEL	SEL
2693	4942.6172	4428.3560	576.307	SEL	SEL
2694	4941.8426	4413.9362	577.714	ELB7	ELB7
2695	4937.1181	4415.9526	577.275	ELB7	ELB7
2696	4937.1249	4415.9404	577.276	ELB8	ELB8
2697	4935.2870	4411.3457	575.352	ELB8	ELB8
2698	4928.6085	4416.7560	575.326	ELB8	ELB8
2699	4929.2691	4422.0299	576.209	ELB8	ELB8
2700	4934.5040	4421.3589	578.084	ELB7	ELB7
2701	4930.7465	4432.9853	575.556	ELB8	ELB8
2702	4935.2797	4427.3345	576.507	ELB8	ELB8
2703	4945.5118	4424.9468	576.532	ELB8	ELB8
2704	4945.5564	4424.8982	576.532	ELB7	ELB7
2705	4937.3313	4420.2152	578.178	SEL	SEL
2706	4933.2919	4412.2078	575.178	ELB6	ELB6
2707	4933.3009	4412.1866	575.178	ELB7	ELB7
2708	4916.8031	4423.0435	575.396	ELB6	ELB6
2709	4914.2392	4417.5045	574.624	ELB6	ELB6
2710	4907.0462	4415.7108	576.145	ELB6	ELB6
2711	4912.3669	4409.1235	575.937	ELB6	ELB6
2712	4919.2617	4406.6217	574.706	ELB6	ELB6
2713	4919.2548	4406.6681	574.708	ELB7	ELB7
2714	4917.5683	4413.7734	574.382	SEL	SEL
2715	4919.4704	4396.0693	574.733	ELB7	ELB7
2716	4919.4686	4396.0842	574.733	ELB8	ELB8
2717	4930.4089	4397.9274	574.658	ELB7	ELB7
2718	4930.3952	4397.9734	574.659	ELB8	ELB8
2719	4934.1850	4400.6261	574.964	ELB7	ELB7
2720	4943.4116	4406.0007	575.504	ELB7	ELB7
2721	4931.2605	4405.8694	577.344	SEL	SEL
2722	4936.3778	4389.7467	576.222	ELB8	ELB8
2723	4925.3124	4379.0670	575.129	ELB8	ELB8
2724	4925.1500	4378.9385	575.128	ELB7	ELB7
2725	4919.0558	4383.1478	574.452	ELB7	ELB7
2726	4919.0520	4383.1866	574.452	ELB8	ELB8
2727	4913.3829	4393.8239	574.193	ELB7	ELB7
2728	4919.3763	4391.2566	575.743	SEL	SEL
2729	4928.4111	4388.3651	578.309	SEL	SEL
2730	4909.7050	4379.3195	574.184	ELB8	ELB8
2731	4915.7363	4367.4465	574.826	ELB8	ELB8
2732	4924.3366	4369.8906	574.743	ELB8	ELB8
2733	4925.5546	4376.3776	575.199	ELB8	ELB8
2734	4917.7137	4375.4906	577.226	SEL	SEL
2735	4898.1384	4393.9954	575.686	SEL	SEL
2736	4894.5861	4390.7692	574.027	ELB8	ELB8
2737	4894.3653	4397.7976	574.012	ELB8	ELB8
2738	4900.4165	4400.4818	573.846	ELB8	ELB8
2739	4904.1404	4392.1877	574.136	ELB8	ELB8
2740	4897.5145	4389.7638	574.148	ELB8	ELB8
2741	4875.9952	4372.2834	576.508	SEL	SEL
2742	4875.6091	4375.5239	575.936	SEL	SEL
2743	4874.6504	4385.9912	575.835	SEL	SEL
2744	4871.8564	4368.6190	574.326	ELB7	ELB7
2745	4865.5390	4385.3943	574.587	ELB7	ELB7
2746	4868.4964	4389.1208	574.583	ELB7	ELB7

Number	Northing	Easting	Elevation	Raw Desc	Full Desc
2747	4877.2949	4393.7871	573.798	ELB7	ELB7
2748	4885.3987	4388.8882	573.822	ELB7	ELB7
2749	4881.5537	4365.9582	573.769	ELB7	ELB7
2750	4785.7446	4431.4172	574.622	ELB7	ELB7
2751	4785.7796	4431.4257	574.620	ELB8	ELB8
2752	4785.8146	4431.4342	574.621	ELB9	ELB9
2753	4797.8949	4421.4501	574.788	ELB7	ELB7
2754	4799.8501	4425.0689	576.736	ELB9	ELB9
2755	4799.8253	4425.1273	576.713	ELB10	ELB10
2756	4800.7691	4427.7122	574.902	ELB8	ELB8
2757	4809.7212	4409.1016	573.770	ELB7	ELB7
2758	4813.2903	4414.3413	575.493	ELB9	ELB9
2759	4814.5175	4417.2615	575.765	ELB10	ELB10
2760	4815.4332	4420.1544	574.654	ELB8	ELB8
2761	4821.0245	4415.9135	574.615	ELB10	ELB10
2762	4821.0334	4415.9180	574.615	ELB11	ELB11
2763	4818.6488	4411.2829	575.139	ELB9	ELB9
2764	4816.7392	4404.8736	573.771	ELB7	ELB7
2765	4824.0768	4420.0751	575.102	ELB11	ELB11
2766	4838.2306	4413.3164	574.750	ELB11	ELB11
2767	4821.6286	4414.8036	574.636	ELB8	ELB8
2768	4824.6944	4413.7151	574.115	ELB8	ELB8
2769	4838.0919	4406.0835	573.759	ELB8	ELB8
2770	4836.4584	4402.7648	574.616	ELB10	ELB10
2771	4834.2432	4398.7135	574.877	ELB9	ELB9
2772	4832.2862	4389.8119	572.953	ELB7	ELB7
2773	4843.1612	4382.9501	572.955	ELB7	ELB7
2774	4844.3351	4393.6658	574.940	ELB9	ELB9
2775	4844.5534	4401.9282	574.965	ELB8	ELB8
2776	4844.4279	4402.0171	574.956	ELB11	ELB11
2777	4844.4599	4402.0458	574.956	ELB10	ELB10
2778	4851.1719	4397.9078	575.454	ELB9	ELB9
2779	4857.7945	4391.6273	574.073	ELB7	ELB7
2780	4856.2334	4400.6535	573.871	ELB7	ELB7
2781	4842.5642	4414.5604	574.834	ELB7	ELB7
2782	4842.6007	4414.5851	574.835	ELB9	ELB9
2783	4847.8619	4459.7618	574.403	ELB7	ELB7
2784	4852.2233	4451.3559	573.555	ELB7	ELB7
2785	4846.0975	4444.4890	573.914	ELB7	ELB7
2786	4838.7538	4445.2112	574.917	ELB7	ELB7
2787	4831.2191	4444.8525	574.889	ELB7	ELB7
2788	4820.1507	4445.9743	573.560	ELB7	ELB7
2789	4803.6403	4454.1806	573.790	ELB7	ELB7
2790	4810.2980	4471.5714	574.086	ELB7	ELB7
2791	4816.2703	4467.6966	574.378	ELB7	ELB7
2792	4823.0255	4472.9585	573.718	ELB7	ELB7
2793	4841.3373	4461.9150	575.034	ELB7	ELB7
2794	4843.1606	4451.3582	577.081	SEL	SEL
2795	4833.3299	4452.8112	575.429	SEL	SEL
2796	4830.7967	4456.4117	576.852	SEL	SEL
2797	4828.8636	4450.3557	576.334	SEL	SEL
2798	4821.4399	4467.3108	575.346	SEL	SEL
2799	4821.0201	4464.7172	574.700	SEL	SEL
2800	4820.6086	4456.7569	575.958	SEL	SEL
2801	4810.3175	4457.0715	576.312	SEL	SEL
2802	4872.7154	4445.6850	574.086	SEL	SEL
2803	4869.9556	4433.6168	573.724	SEL	SEL
2804	4872.7722	4451.2495	575.162	ELB7	ELB7
2805	4860.1402	4428.8973	575.464	ELB7	ELB7
2806	4864.3822	4421.3762	575.512	ELB7	ELB7
2807	4869.7249	4423.4759	574.595	ELB7	ELB7
2808	4875.5319	4426.3096	575.669	ELB7	ELB7
2809	4882.7049	4443.7109	575.857	ELB7	ELB7

Number	Northing	Easting	Elevation	Raw Desc	Full Desc
2810	4872.7001	4419.0537	574.171	SEL	SEL
2811	4879.7617	4416.6172	575.623	SEL	SEL
2812	4885.7383	4417.6855	574.344	SEL	SEL
2813	4891.5169	4416.8610	575.626	SEL	SEL
2814	4898.0962	4418.0646	573.842	SEL	SEL
2815	4906.6492	4416.6833	576.231	SEL	SEL
2816	4903.4257	4401.7245	574.220	ELB7	ELB7
2817	4903.4267	4401.7325	574.221	ELB8	ELB8
2818	4897.6148	4402.1290	574.014	ELB7	ELB7
2819	4898.1606	4405.4954	575.114	ELB8	ELB8
2820	4878.0252	4402.9702	575.581	ELB8	ELB8
2821	4877.5451	4398.6004	573.860	ELB7	ELB7
2822	4860.1606	4403.7731	574.008	ELB7	ELB7
2823	4862.4860	4407.4568	575.228	ELB8	ELB8
2824	4854.5204	4419.8972	575.675	ELB8	ELB8
2825	4850.5394	4418.9221	574.511	ELB7	ELB7
2826	4852.3087	4433.1431	573.969	ELB7	ELB7
2827	4857.0549	4432.1718	575.765	ELB8	ELB8
2828	4860.1112	4440.3927	574.585	ELB8	ELB8
2829	4860.1444	4440.4068	574.587	ELB7	ELB7
2830	4900.9469	4337.0938	574.355	ELB1	ELB1
2831	4900.9895	4325.5187	575.494	ELB2	ELB2
2832	4896.2172	4370.8758	574.502	SEL	SEL
2833	4889.8441	4417.5960	575.700	SEL	SEL
2834	4888.7507	4466.1306	574.546	SEL	SEL
2835	4893.8548	4514.6677	574.121	SEL	SEL
2836	4943.8610	4369.2802	573.468	SEL	SEL
2837	4928.1071	4449.7232	575.296	SEL	SEL
2838	4920.2958	4498.2940	575.896	SEL	SEL
2839	4883.7945	4323.2889	575.452	ELB1	ELB1
2840	4883.7887	4323.2879	575.487	ELB7	ELB7
2841	4886.6992	4336.6512	574.186	ELB7	ELB7
2842	4886.7281	4336.7983	574.188	ELB2	ELB2
2843	4877.5303	4337.9133	574.419	ELB7	ELB7
2844	4870.0754	4326.8703	574.656	ELB7	ELB7
2845	4880.8898	4323.7985	575.173	ELB7	ELB7
2846	4882.2894	4330.8190	576.924	SEL	SEL
2847	4852.6190	4331.6635	574.245	SEL	SEL
2848	4852.3065	4334.7272	573.684	SEL	SEL
2849	4847.4321	4369.9653	573.012	SEL	SEL
2850	4841.8199	4417.5126	574.510	SEL	SEL
2851	4837.6210	4471.2310	574.051	SEL	SEL
2852	4831.9943	4522.1908	574.075	SEL	SEL
2853	4828.9452	4570.2892	573.900	SEL	SEL
2854	4798.0494	4352.5690	572.977	SEL	SEL
2855	4799.5420	4398.5083	573.222	SEL	SEL
2856	4790.8635	4448.6645	573.418	SEL	SEL
2857	4782.3775	4502.0957	574.335	SEL	SEL
2858	4756.1015	4537.0854	573.834	SEL	SEL
2859	4764.7194	4399.6090	578.108	SEL	SEL
2860	4770.5450	4398.0032	579.528	SEL	SEL
2861	4780.4132	4391.4384	578.029	SEL	SEL
2862	4786.5652	4388.6184	579.409	SEL	SEL
2863	4792.2580	4382.3993	578.948	SEL	SEL
2864	4803.2474	4376.7202	573.230	ELB7	ELB7
2865	4794.2271	4393.0518	572.981	ELB7	ELB7
2866	4776.4124	4406.5950	573.399	ELB7	ELB7
2867	4749.5850	4404.7959	572.977	ELB7	ELB7
2868	4759.1235	4389.6244	572.503	ELB7	ELB7
2869	4791.6769	4372.6672	572.905	ELB7	ELB7
2870	4778.6268	4352.2984	577.354	SEL	SEL
2871	4789.1188	4357.0893	572.955	ELB7	ELB7
2872	4784.4810	4336.4477	573.095	ELB7	ELB7

Number	Northing	Easting	Elevation	Raw Desc	Full Desc
2873	4767.4504	4345.6258	572.636	ELB7	ELB7
2874	4776.6292	4363.2020	572.515	ELB7	ELB7
2875	4762.7854	4364.2748	572.503	ELB7	ELB7
2876	4764.9158	4377.0678	572.462	ELB7	ELB7
2877	4758.1100	4381.0432	572.414	ELB7	ELB7
2878	4749.2119	4367.1319	572.323	ELB7	ELB7
2879	4754.2792	4367.9769	574.596	SEL	SEL
2880	4759.3719	4374.5196	574.913	SEL	SEL
2881	4750.4654	4318.0073	573.556	ELB7	ELB7
2882	4749.3937	4310.8883	574.032	ELB7	ELB7
2883	4745.6076	4310.5715	573.347	ELB7	ELB7
2884	4744.4261	4318.0932	573.208	ELB7	ELB7
2885	4748.6134	4314.4264	575.037	SEL	SEL
2886	4756.7429	4320.0457	574.267	ELB1	ELB1
2887	4756.6824	4320.0952	574.269	ELB2	ELB2
2888	4721.9372	4327.5698	572.908	ELB1	ELB1
2889	4722.6887	4332.9105	574.424	ELB2	ELB2
2890	4674.3931	4363.6452	574.292	ELB3	ELB3
2891	4674.3368	4363.6218	574.296	ELB4	ELB4
2892	4674.9303	4366.4302	573.028	ELB3	ELB3
2893	4716.1038	4354.3570	572.993	ELB3	ELB3
2894	4714.5944	4350.3890	574.110	ELB4	ELB4
2895	4754.4503	4335.2154	574.354	ELB4	ELB4
2896	4757.6647	4339.3368	573.003	ELB3	ELB3
2897	4779.7653	4329.0697	573.085	ELB3	ELB3
2898	4784.8809	4327.2735	573.151	ELB3	ELB3
2899	4784.8809	4327.2735	573.152	ELB4	ELB4
2900	4790.3484	4335.0473	574.437	SEL	SEL
2901	4748.8276	4313.8011	574.967	SEL	SEL
2902	4745.9454	4317.6516	573.626	ELB5	ELB5
2903	4744.6363	4311.1433	573.415	ELB5	ELB5
2904	4749.2973	4310.7145	574.022	ELB5	ELB5
2905	4750.7627	4344.9870	573.089	SEL	SEL
2906	4748.9127	4403.5379	572.850	SEL	SEL
2907	4751.8238	4440.2341	574.111	SEL	SEL
2908	4752.3409	4443.5183	573.358	SEL	SEL
2909	4752.2901	4455.1261	573.703	SEL	SEL
2910	4746.4224	4505.7085	575.114	SEL	SEL
2911	4743.4655	4526.7985	574.384	SEL	SEL
2912	4885.1395	4577.9878	574.403	CHK HPT 9	CHK HPT 9
2913	4911.4225	4462.1344	576.277	CHK HPT 11	CHK HPT 11
2914	4653.4257	4344.2977	575.034	CHK BM 1	CHK BM 1
2915	4644.6967	4272.1720	573.521	CHK HPT 50	CHK HPT 50
2916	4704.6719	4326.9993	572.211	ELB1	ELB1
2917	4704.5829	4327.0005	572.212	ELB3	ELB3
2918	4714.4102	4323.2044	572.334	ELB1	ELB1
2919	4717.8744	4313.5005	572.283	ELB1	ELB1
2920	4717.7313	4304.7924	573.090	ELB1	ELB1
2921	4712.2365	4305.2068	572.561	ELB1	ELB1
2922	4714.9901	4306.4058	570.935	DCH1	DCH1
2923	4715.5647	4312.5598	571.311	DCH1	DCH1
2924	4710.2995	4315.2926	572.484	ELB1	ELB1
2925	4709.6743	4322.0483	571.434	DCH1	DCH1
2926	4707.5597	4318.7634	572.660	ELB1	ELB1
2927	4699.9049	4322.7432	572.476	ELB1	ELB1
2928	4702.9816	4325.2177	571.583	DCH1	DCH1
2929	4686.1300	4334.9848	572.790	ELB3	ELB3
2930	4685.9875	4332.3160	572.031	DCH1	DCH1
2931	4684.6889	4329.4825	572.604	ELB1	ELB1
2932	4686.1897	4343.8103	574.627	ELB2	ELB2
2933	4673.2958	4347.0241	574.557	ELB2	ELB2
2934	4671.0421	4336.7146	572.743	ELB3	ELB3
2935	4670.3474	4333.2410	572.077	DCH1	DCH1

Number	Northing	Easting	Elevation	Raw Desc	Full Desc
2936	4669.2068	4329.4987	573.093	DCH1	DCH1
2937	4657.5118	4331.6797	572.927	ELB1	ELB1
2938	4658.2206	4335.6882	571.936	DCH1	DCH1
2939	4657.2916	4339.8686	573.946	ELB3	ELB3
2940	4649.3800	4340.6772	572.355	DCH1	DCH1
2941	4648.0348	4342.0510	572.897	DCH1	DCH1
2942	4648.0324	4342.0352	572.897	ELB3	ELB3
2943	4648.8038	4335.2869	573.103	ELB3	ELB3
2944	4648.7968	4335.2692	573.102	ELB1	ELB1
2945	4701.7160	4308.9267	572.751	SEL	SEL
2946	4697.0325	4322.9345	572.586	SEL	SEL
2947	4693.8675	4376.5095	572.710	SEL	SEL
2948	4691.2913	4427.6145	572.324	SEL	SEL
2949	4695.6352	4480.4652	573.439	SEL	SEL
2950	4695.3092	4519.2922	574.430	SEL	SEL
2951	4637.4261	4398.7147	573.002	SEL	SEL
2952	4601.1372	4363.2206	573.665	SEL	SEL
2953	4570.6098	4365.7861	573.059	SEL	SEL
2954	4596.5509	4320.2949	572.905	SEL	SEL
2955	4546.7561	4314.9633	572.841	SEL	SEL
2956	4911.4082	4462.1271	576.279	CHK HPT 10	CHK HPT 10
2960	5011.9755	4343.2707	577.000	CHK HPT 2	CHK HPT 2
2961	4522.2210	4248.4966	574.072	CHK HPT 3	CHK HPT 3
2962	4655.5579	4219.6596	573.452	CHK HPT 52	CHK HPT 52
2963	4651.0202	4346.5703	573.504	CHK HPT 53	CHK HPT 53
2964	4777.6556	4496.6829	571.382	ELB1	ELB1
2965	4774.0986	4496.0481	570.620	ELB1	ELB1
2966	4762.8256	4497.4491	571.566	ELB1	ELB1
2967	4761.7855	4506.2644	571.518	ELB1	ELB1
2968	4765.2833	4511.6007	572.135	ELB1	ELB1
2969	4764.7250	4520.1742	571.408	ELB1	ELB1
2970	4766.1940	4532.3177	571.009	ELB1	ELB1
2971	4769.4118	4538.9955	571.080	ELB1	ELB1
2972	4771.0590	4539.4593	571.066	ELB1	ELB1
2973	4779.5624	4529.5045	571.406	ELB1	ELB1
2974	4778.3676	4509.2948	571.123	ELB1	ELB1
2975	4775.1662	4502.2731	568.451	ELB1	ELB1
2976	4766.8394	4500.6390	567.991	ELB1	ELB1
2977	4765.6797	4507.6314	567.839	ELB1	ELB1
2978	4766.5787	4511.3805	567.262	ELB1	ELB1
2979	4767.3014	4520.3032	567.582	ELB1	ELB1
2980	4768.3144	4530.5253	568.860	ELB1	ELB1
2981	4770.2472	4535.3292	569.590	ELB1	ELB1
2982	4770.2462	4537.5146	569.861	ELB1	ELB1
2983	4776.5714	4527.7342	568.464	ELB1	ELB1
2984	4775.3621	4509.7301	567.939	ELB1	ELB1
2985	4874.0588	4483.4057	571.240	ELB1	ELB1
2986	4879.3671	4489.4133	571.557	ELB1	ELB1
2987	4888.3663	4486.3472	571.316	ELB1	ELB1
2988	4883.9724	4470.7741	571.194	ELB1	ELB1
2989	4877.2675	4440.9227	571.258	ELB1	ELB1
2990	4874.9237	4439.7840	571.257	ELB1	ELB1
2991	4866.0990	4442.5394	571.415	ELB1	ELB1
2992	4870.8766	4467.1310	570.880	ELB1	ELB1
2993	4877.2753	4481.6945	569.436	ELB1	ELB1
2994	4879.7094	4485.6689	569.660	ELB1	ELB1
2995	4884.3545	4483.6220	569.657	ELB1	ELB1
2996	4883.1380	4470.9059	569.576	ELB1	ELB1
2997	4877.7684	4446.3848	570.032	ELB1	ELB1
2998	4875.7454	4441.3802	570.227	ELB1	ELB1
2999	4875.0798	4440.5263	570.379	ELB1	ELB1
3000	4867.1627	4443.3631	570.608	ELB1	ELB1
3001	4872.2396	4466.9363	569.590	ELB1	ELB1

Number	Northing	Easting	Elevation	Raw Desc	Full Desc
3002	4909.7414	4503.1767	571.655	ELB1	ELB1
3003	4906.4107	4498.1576	571.894	ELB1	ELB1
3004	4907.0957	4497.0467	572.120	ELB1	ELB1
3005	4905.4242	4495.0805	571.924	ELB1	ELB1
3006	4902.9209	4494.9539	571.121	ELB1	ELB1
3007	4896.0531	4499.7944	571.222	ELB1	ELB1
3008	4898.4340	4505.2626	571.919	ELB1	ELB1
3009	4906.2183	4505.9542	571.385	ELB1	ELB1
3010	4908.2425	4503.2059	570.946	ELB1	ELB1
3011	4905.3349	4498.6681	570.954	ELB1	ELB1
3012	4900.5299	4500.7043	570.984	ELB1	ELB1
3013	4906.2119	4504.4816	570.921	ELB1	ELB1
3014	4837.6846	4396.9827	571.030	ELB1	ELB1
3015	4837.6756	4397.0006	571.030	ELB2	ELB2
3016	4843.3816	4386.1951	572.116	ELB2	ELB2
3017	4844.2079	4390.7451	571.171	ELB1	ELB1
3018	4855.1813	4386.1022	571.017	ELB1	ELB1
3019	4854.1398	4384.6406	572.282	ELB2	ELB2
3020	4865.6713	4373.2320	572.438	ELB2	ELB2
3021	4867.6687	4376.5086	570.697	ELB1	ELB1
3022	4875.6343	4373.1110	569.842	ELB1	ELB1
3023	4876.3484	4370.2143	572.064	ELB2	ELB2
3024	4883.6380	4380.4286	571.740	ELB2	ELB2
3025	4883.6915	4380.3718	571.740	ELB3	ELB3
3026	4881.5198	4380.4625	571.050	ELB1	ELB1
3027	4891.6529	4386.4954	572.052	ELB3	ELB3
3028	4895.6979	4403.8246	571.832	ELB3	ELB3
3029	4901.4628	4417.6082	571.689	ELB3	ELB3
3030	4892.9023	4416.4784	571.513	ELB3	ELB3
3031	4879.5318	4392.2425	571.673	ELB3	ELB3
3032	4878.8710	4385.1744	571.280	ELB3	ELB3
3033	4878.7783	4385.1759	571.277	ELB1	ELB1
3034	4878.7579	4385.1980	571.277	ELB2	ELB2
3035	4871.8712	4384.2362	571.586	ELB1	ELB1
3036	4872.1074	4383.8310	571.119	ELB2	ELB2
3037	4857.0745	4389.9065	570.913	ELB2	ELB2
3038	4857.1882	4390.4939	571.536	ELB1	ELB1
3039	4846.5027	4394.4140	571.669	ELB1	ELB1
3040	4845.8400	4392.8217	571.088	ELB2	ELB2
3041	4885.3983	4388.9718	573.151	SEL	SEL
3042	4889.3618	4399.8036	573.551	SEL	SEL
3043	4896.5908	4413.4147	573.996	SEL	SEL
3044	4846.8764	4687.2736	572.176	DH C14	DH C14
3045	4868.6219	4528.7547	571.907	DH C16	DH C16
3046	4928.4114	4487.3399	572.354	DH C17	DH C17
3047	4963.6318	4447.7291	572.296	DH C18	DH C18
3048	4946.1758	4392.9570	572.010	DH C21	DH C21
3049	4909.1782	4439.6490	571.451	DH C20	DH C20
3050	4873.2179	4427.4495	571.536	DH C22	DH C22
3051	4870.8096	4364.1967	572.456	DH C23	DH C23
3052	4799.9638	4364.7578	572.949	DH C24	DH C24
3053	4733.9167	4382.8032	571.749	DH C25	DH C25
3054	4708.5792	4436.3552	571.618	DH C28	DH C28
3055	4784.3166	4450.3717	571.515	DH C29	DH C29
3056	4834.4305	4439.7922	571.621	DH C30	DH C30
3057	4869.5770	4478.4237	571.238	DH C19	DH C19
3058	4788.8108	4539.2996	571.356	DH C26	DH C26
3059	4737.4578	4505.8584	571.322	DH C27	DH C27
3060	4930.9843	4507.0609	572.148	ELB1	ELB1
3061	4946.0553	4502.7597	572.248	ELB1	ELB1
3062	4945.8640	4494.9133	572.132	ELB1	ELB1
3063	4945.8934	4494.9193	572.132	ELB2	ELB2
3064	4938.0610	4492.2809	571.856	ELB1	ELB1

Number	Northing	Easting	Elevation	Raw Desc	Full Desc
3065	4929.4764	4499.8558	571.921	ELB1	ELB1
3066	4954.2774	4483.8918	571.977	ELB2	ELB2
3067	4950.6061	4480.7243	571.992	ELB2	ELB2
3068	4941.0607	4485.7292	571.943	ELB2	ELB2
3069	4942.0224	4491.9306	572.395	ELB2	ELB2
3070	4939.6848	4499.6682	574.928	SEL	SEL
3071	4945.8449	4488.2742	575.044	SEL	SEL
3072	4949.0322	4484.0155	573.284	SEL	SEL
3073	4973.5985	4456.8746	572.967	ELB1	ELB1
3074	4967.6874	4483.4235	572.255	ELB1	ELB1
3075	4968.0166	4492.4887	572.151	ELB1	ELB1
3076	4971.8688	4498.7041	572.293	ELB1	ELB1
3077	4965.5676	4508.1087	572.081	ELB1	ELB1
3078	4953.1848	4514.7936	572.331	ELB1	ELB1
3079	4953.1676	4514.7885	572.332	ELB2	ELB2
3080	4965.6194	4516.4738	572.882	ELB2	ELB2
3081	4968.6175	4519.0309	572.866	ELB2	ELB2
3082	4972.9418	4513.8473	572.771	ELB2	ELB2
3083	4973.5267	4512.7078	572.095	ELB2	ELB2
3084	4971.2575	4508.2986	572.543	ELB2	ELB2
3085	4974.8104	4505.5157	573.317	ELB2	ELB2
3086	4972.6001	4500.9952	572.791	ELB2	ELB2
3087	4973.4054	4497.9579	572.950	ELB2	ELB2
3088	4968.8021	4490.8406	573.384	ELB2	ELB2
3089	4968.8199	4490.8429	573.384	ELB3	ELB3
3090	4978.1289	4488.8758	574.316	ELB2	ELB2
3091	4981.0065	4489.9242	573.161	ELB3	ELB3
3092	4978.7743	4482.2416	574.050	ELB2	ELB2
3093	4985.0365	4480.2870	572.558	ELB3	ELB3
3094	4979.8741	4480.4101	575.923	ELB2	ELB2
3095	4983.1157	4472.2340	573.606	ELB2	ELB2
3096	4986.1573	4469.6821	572.251	ELB3	ELB3
3097	4983.8957	4460.0761	573.251	ELB2	ELB2
3098	4987.6442	4458.8589	572.310	ELB3	ELB3
3099	4985.1333	4452.0176	572.434	ELB3	ELB3
3100	4973.6788	4456.7889	572.938	ELB3	ELB3
3101	4977.3176	4461.4505	573.838	ELB2	ELB2
3102	4974.0327	4472.9708	575.001	ELB2	ELB2
3103	4973.7711	4476.3915	574.299	ELB2	ELB2
3104	4972.7727	4480.8849	575.526	ELB2	ELB2
3105	4968.6641	4484.3983	573.001	ELB2	ELB2
3106	4968.7247	4490.7391	573.354	ELB2	ELB2
3107	4971.4345	4486.4433	572.027	SEL	SEL
3108	4976.9387	4486.3200	572.702	SEL	SEL
3109	4976.9871	4480.2014	574.695	SEL	SEL
3110	4979.2991	4475.1181	573.589	SEL	SEL
3111	4976.5491	4474.5110	572.820	SEL	SEL
3112	4785.0326	4354.6807	573.335	ELB1	ELB1
3113	4768.1134	4354.5924	573.144	ELB1	ELB1
3114	4767.4749	4340.0438	572.751	ELB1	ELB1
3115	4780.3788	4336.1645	573.102	ELB1	ELB1
3116	4789.2405	4347.5806	573.386	ELB1	ELB1
3117	4775.5442	4349.8028	578.418	ELB1	ELB1
3118	4777.9445	4349.0433	578.430	ELB1	ELB1
3119	4777.9420	4344.5858	578.496	ELB1	ELB1
3120	4775.3071	4345.4548	578.360	ELB1	ELB1
3121	4755.0602	4342.4177	573.236	ELB1	ELB1
3122	4760.0089	4329.7297	574.342	ELB1	ELB1
3123	4757.1111	4326.1126	574.660	ELB1	ELB1
3124	4747.9810	4327.3398	574.697	ELB1	ELB1
3125	4748.1294	4327.3398	574.697	ELB2	ELB2
3126	4712.8406	4322.6820	571.866	ELB1	ELB1
3127	4741.9739	4328.8526	572.684	ELB1	ELB1

Number	Northing	Easting	Elevation	Raw Desc	Full Desc
3128	4742.7058	4331.7738	572.596	ELB1	ELB1
3129	4717.1162	4329.4049	572.060	ELB1	ELB1
3130	4714.7521	4334.7222	572.118	ELB1	ELB1
3131	4719.8197	4329.8564	573.692	ELB1	ELB1
3132	4733.1513	4333.0872	573.783	ELB1	ELB1
3133	4743.8231	4334.5379	574.340	ELB1	ELB1
3134	4743.8451	4334.5894	574.337	ELB2	ELB2
3135	4747.5183	4344.8583	573.672	ELB1	ELB1
3136	4750.4484	4337.1838	576.194	SEL	SEL
3137	4756.9070	4329.8233	575.266	SEL	SEL
3138	4754.0740	4329.0672	574.373	SEL	SEL
3139	4750.9875	4329.7670	575.615	SEL	SEL
3140	4751.4839	4331.6195	574.552	SEL	SEL
3141	4710.7809	4326.3243	572.587	ELB1	ELB1
3142	4710.7531	4326.2804	572.589	ELB2	ELB2
3143	4710.7596	4326.2905	572.589	ELB3	ELB3
3144	4709.1613	4334.2711	572.438	ELB1	ELB1
3145	4707.6212	4333.2911	574.435	ELB2	ELB2
3146	4703.8328	4329.4835	572.618	ELB3	ELB3
3147	4698.7978	4343.3041	572.044	ELB1	ELB1
3148	4697.3608	4339.6428	574.378	ELB2	ELB2
3149	4694.6017	4334.2245	572.769	ELB3	ELB3
3150	4688.6843	4342.9860	573.580	ELB3	ELB3
3151	4688.6556	4342.9526	573.579	ELB2	ELB2
3152	4691.6561	4345.3236	572.634	ELB1	ELB1
3153	4694.4892	4347.0504	572.691	ELB1	ELB1
3154	4687.0659	4352.5322	572.953	ELB2	ELB2
3155	4683.1330	4357.3656	572.673	ELB2	ELB2
3156	4686.3482	4362.3745	573.015	ELB2	ELB2
3157	4703.0518	4358.3441	573.155	ELB2	ELB2
3158	4705.5765	4345.6607	573.328	ELB2	ELB2
3159	4704.0846	4343.1562	572.095	ELB1	ELB1
3160	4712.3271	4336.9745	572.128	ELB1	ELB1
3161	4711.2717	4342.3544	573.869	ELB2	ELB2
3162	4713.9073	4346.7149	573.593	ELB2	ELB2
3163	4715.4994	4343.4774	572.387	ELB1	ELB1
3164	4716.0842	4342.8719	572.198	ELB1	ELB1
3165	4718.7374	4343.9129	573.647	ELB2	ELB2
3166	4714.8141	4334.7792	572.099	ELB2	ELB2
3167	4714.6965	4334.6083	572.102	ELB1	ELB1
3168	4710.4736	4344.3271	573.351	SEL	SEL
3169	4699.6948	4354.4770	574.802	SEL	SEL
3170	4693.8442	4353.5652	575.699	SEL	SEL
3171	4690.6826	4355.7787	573.971	SEL	SEL
3172	4691.7433	4357.4516	575.133	SEL	SEL
3173	4687.8988	4358.3865	574.506	SEL	SEL
3174	4650.9227	4346.4906	573.411	CHK HPT 53	CHK HPT 53
3175	4650.9836	4346.5416	573.491	CHK HPT 53	CHK HPT 53
3176	4684.6523	4379.0307	572.387	ELB1	ELB1
3177	4684.6476	4379.0271	572.386	ELB2	ELB2
3178	4745.0012	4372.9751	572.149	ELB1	ELB1
3179	4745.2384	4371.4175	573.334	ELB2	ELB2
3180	4800.7833	4365.6831	572.573	ELB1	ELB1
3181	4800.4933	4364.0485	573.090	ELB2	ELB2
3182	4851.3984	4364.6103	573.017	ELB2	ELB2
3183	4850.7263	4371.4330	572.228	ELB1	ELB1
3184	4870.9811	4364.3030	572.465	ELB1	ELB1
3185	4870.9701	4364.3197	572.464	ELB2	ELB2
3186	4891.0971	4362.7280	572.857	ELB2	ELB2
3187	4888.3726	4374.1297	572.008	ELB1	ELB1
3188	4922.2900	4365.7473	573.036	ELB2	ELB2
3189	4923.0844	4372.5108	571.986	ELB1	ELB1
3190	4931.5945	4373.3032	571.663	ELB1	ELB1

Number	Northing	Easting	Elevation	Raw Desc	Full Desc
3191	4931.6091	4371.1180	572.764	ELB2	ELB2
3192	4951.8658	4376.0191	573.204	ELB2	ELB2
3193	4950.9260	4377.4679	571.958	ELB1	ELB1
3194	4972.7391	4390.6733	571.941	ELB1	ELB1
3195	4975.1429	4389.5541	573.978	ELB2	ELB2
3196	4977.2940	4416.8576	573.266	ELB2	ELB2
3197	4976.4919	4416.9144	572.448	ELB1	ELB1
3198	4974.1434	4432.9513	572.301	ELB1	ELB1
3199	4974.1473	4432.9505	572.302	ELB2	ELB2
3200	4953.2348	4514.7395	572.313	ELB1	ELB1
3201	4953.1888	4514.7258	572.312	ELB2	ELB2
3202	4919.0055	4532.7747	572.051	ELB1	ELB1
3203	4921.4077	4535.0670	572.869	ELB2	ELB2
3204	4896.1131	4542.4401	572.700	ELB2	ELB2
3205	4895.1975	4541.6440	571.957	ELB1	ELB1
3206	4883.2312	4548.9055	571.926	ELB1	ELB1
3207	4883.2154	4548.8902	571.925	ELB2	ELB2
3208	4808.9561	4585.1189	571.794	ELB1	ELB1
3209	4808.9550	4585.1029	571.794	DRV1	DRV1
3210	4796.4155	4602.3476	573.302	DRV1	DRV1
3211	4797.5129	4600.3462	572.255	ELB1	ELB1
3212	4765.6403	4592.2504	571.738	ELB1	ELB1
3213	4765.2463	4593.7419	573.181	DRV1	DRV1
3214	4721.2689	4569.2006	573.112	DRV1	DRV1
3215	4722.0520	4567.2123	571.917	ELB1	ELB1
3216	4691.5111	4542.9346	571.947	ELB1	ELB1
3217	4690.3623	4543.5539	573.076	DRV1	DRV1
3218	4678.3949	4510.5787	573.297	DRV1	DRV1
3219	4679.7726	4510.0175	571.789	ELB1	ELB1
3220	4662.5644	4462.5353	573.478	DRV1	DRV1
3221	4663.5803	4461.4782	572.086	ELB1	ELB1
3222	4652.5617	4429.1570	573.114	DRV1	DRV1
3223	4652.6138	4429.1711	573.116	ELB1	ELB1
3224	4722.1813	4397.8708	572.250	ELB1	ELB1
3225	4722.1516	4397.8440	572.250	ELB2	ELB2
3226	4733.4364	4408.8396	572.267	ELB1	ELB1
3227	4732.2020	4409.2087	573.048	ELB2	ELB2
3228	4727.4089	4426.4264	573.274	ELB2	ELB2
3229	4731.1070	4428.8285	572.271	ELB1	ELB1
3230	4703.2317	4425.4850	571.309	ELB1	ELB1
3231	4702.5519	4424.3898	573.063	ELB2	ELB2
3232	4696.7916	4427.1537	572.027	ELB2	ELB2
3233	4696.7897	4427.1529	572.027	ELB1	ELB1
3234	4850.8222	4686.4248	572.484	SEL	SEL
3235	4830.0108	4686.9678	572.070	SEL	SEL
3236	4828.8188	4631.8975	571.652	SEL	SEL
3237	4857.3950	4631.9596	572.047	SEL	SEL
3238	4875.0411	4633.9918	572.768	SEL	SEL
3239	4899.7400	4580.6814	572.729	SEL	SEL
3240	4845.4194	4584.4677	571.583	SEL	SEL
3241	4796.0089	4589.1712	571.295	SEL	SEL
3242	4708.8917	4550.0061	571.432	SEL	SEL
3243	4760.2929	4543.3022	571.062	SEL	SEL
3244	4811.2783	4537.2101	571.491	SEL	SEL
3245	4863.0467	4528.9790	572.054	SEL	SEL
3246	4915.1801	4523.0902	571.883	SEL	SEL
3247	4940.3332	4520.0211	571.939	SEL	SEL
3248	4954.5958	4522.6342	572.837	SEL	SEL
3249	4974.3621	4465.6031	572.656	SEL	SEL
3250	4921.6458	4466.9406	571.637	SEL	SEL
3251	4868.2486	4468.6219	571.095	SEL	SEL
3252	4816.9380	4471.8794	571.329	SEL	SEL
3253	4762.3449	4474.3306	571.475	SEL	SEL

Number	Northing	Easting	Elevation	Raw Desc	Full Desc
3254	4708.9955	4477.4143	571.669	SEL	SEL
3255	4672.5471	4478.5986	571.635	SEL	SEL
3256	4679.2167	4426.3906	572.497	ELB1	ELB1
3257	4660.6146	4419.0375	572.566	ELB1	ELB1
3258	4652.7571	4426.0627	572.878	ELB1	ELB1
3259	4658.8613	4431.3375	572.209	ELB1	ELB1
3260	4664.3300	4439.7193	572.444	ELB1	ELB1
3261	4681.8049	4430.7311	572.137	ELB1	ELB1
3262	4675.4411	4429.3875	574.516	SEL	SEL
3263	4665.3972	4430.2568	577.350	SEL	SEL
3264	4661.0673	4423.7309	574.968	SEL	SEL
3265	4735.9349	4429.6867	571.800	SEL	SEL
3266	4786.1348	4428.4403	571.256	SEL	SEL
3267	4838.7981	4430.3636	571.626	SEL	SEL
3268	4891.4271	4425.1267	571.059	SEL	SEL
3269	4945.4901	4420.5825	571.929	SEL	SEL
3270	4974.3079	4417.6145	572.296	SEL	SEL
3271	4982.5205	4417.3429	573.275	SEL	SEL
3272	4979.6141	4390.1519	573.906	SEL	SEL
3273	4974.5876	4376.9124	573.907	SEL	SEL
3274	4965.7553	4393.2835	571.712	SEL	SEL
3275	4919.6476	4390.7302	571.537	SEL	SEL
3276	4872.2847	4393.4614	571.409	SEL	SEL
3277	4821.1047	4390.6519	571.788	SEL	SEL
3278	4768.0681	4385.9186	571.703	SEL	SEL
3279	4716.4286	4382.1366	571.963	SEL	SEL
3280	4665.7503	4380.0113	572.604	SEL	SEL
3281	4707.2742	4412.0464	572.558	SEL	SEL
3282	4704.8652	4357.9944	573.171	SEL	SEL
3283	4659.2675	4365.4653	572.584	SEL	SEL
3284	4746.2556	4353.2844	573.152	SEL	SEL
3285	4794.5117	4352.6453	573.506	SEL	SEL
3286	4846.1751	4353.3380	573.660	SEL	SEL
3287	4898.5583	4353.0901	573.608	SEL	SEL
3288	4949.3098	4355.2331	573.515	SEL	SEL
3289	4972.8384	4358.0006	573.963	SEL	SEL
3290	4633.4237	4511.8176	572.572	ELB1	ELB1
3291	4636.8874	4510.4108	573.189	DRV1	DRV1
3292	4651.1959	4507.6354	573.306	SEL	SEL
3293	4671.2430	4541.4552	573.441	SEL	SEL
3294	4665.1319	4550.8220	573.252	DRV1	DRV1
3295	4664.6156	4553.5256	572.633	ELB1	ELB1
3296	4685.8624	4574.3970	572.701	ELB1	ELB1
3297	4686.0944	4572.0302	573.557	DRV1	DRV1
3298	4692.9277	4565.4739	573.302	SEL	SEL
3299	4765.6012	4602.9685	573.036	SEL	SEL
3300	4763.0531	4607.9462	572.987	DRV1	DRV1
3301	4762.2335	4609.8273	571.836	ELB1	ELB1
3302	4786.8779	4626.5830	571.969	ELB1	ELB1
3303	4788.0465	4625.0576	573.297	DRV1	DRV1
3304	4794.7938	4614.4765	573.357	SEL	SEL
3305	4812.0603	4630.8821	573.569	SEL	SEL
3306	4814.7499	4610.8282	573.308	SEL	SEL
3307	4817.5014	4587.2309	571.887	SEL	SEL
3308	4770.5022	4628.1755	571.781	SEL	SEL
3309	4724.4059	4606.4166	572.465	SEL	SEL
3310	4691.1503	4591.2835	572.745	SEL	SEL
3311	4661.7645	4564.8283	572.717	SEL	SEL
3312	4650.9776	4346.5367	573.505	CHK HPT 53	CHK HPT 53
3313	4801.2425	4469.3543	572.120	CHK HPT 54	CHK HPT 54
3314	4782.9055	4633.7458	571.671	DH C5	DH C5
3315	4793.0781	4709.2912	571.675	DH C4	DH C4
3316	4787.8519	4791.1588	572.056	DH C6	DH C6

Number	Northing	Easting	Elevation	Raw Desc	Full Desc
3317	4747.2617	4802.0726	572.401	DH	DH
3318	4717.3802	4897.2179	572.594	DH C2	DH C2
3319	4731.8405	4969.1761	573.044	DH C1	DH C1
3320	4791.7072	4946.0561	572.305	DH C8	DH C8
3321	4798.6414	4860.4202	572.459	DH C7	DH C7
3322	4860.3174	4968.0856	572.561	DH C9	DH C9
3323	4891.1327	4898.8075	572.616	DH C10	DH C10
3324	4905.4387	4832.7549	572.685	DH C11	DH C11
3325	4883.6608	4800.7465	573.018	DH C12	DH C12
3326	4863.4088	4737.8427	572.525	DH C13	DH C13
3327	4801.2406	4469.3564	572.126	CHK HPT 54	CHK HPT 54
3330	4909.5446	4859.2867	572.927	CHK HPT 56	CHK HPT 56
3331	4822.0750	4590.3152	571.696	DRV1	DRV1
3332	4822.0732	4590.3452	571.696	ELB1	ELB1
3333	4820.5139	4610.5399	573.452	DRV1	DRV1
3334	4826.5388	4612.0571	571.777	ELB1	ELB1
3335	4828.2195	4669.5645	572.255	ELB1	ELB1
3336	4826.4592	4670.2251	573.385	DRV1	DRV1
3337	4822.6666	4669.8915	573.601	SEL	SEL
3338	4820.9651	4706.3581	573.343	SEL	SEL
3339	4826.0769	4705.0983	573.281	DRV1	DRV1
3340	4826.0782	4705.0884	573.281	ELB2	ELB2
3341	4828.7021	4705.2809	571.965	ELB1	ELB1
3342	4837.4386	4729.5692	572.233	ELB1	ELB1
3343	4836.2005	4731.0307	573.406	ELB2	ELB2
3344	4836.7903	4734.6500	575.774	ELB3	ELB3
3345	4827.2036	4748.3856	573.279	DRV1	DRV1
3346	4827.2093	4748.3581	573.279	ELB2	ELB2
3347	4829.6412	4749.1506	574.371	ELB3	ELB3
3348	4827.2638	4780.7186	573.460	ELB3	ELB3
3349	4827.2548	4780.7534	573.459	DRV1	DRV1
3350	4833.2597	4770.8271	574.723	ELB3	ELB3
3351	4843.7828	4754.6373	574.571	ELB3	ELB3
3352	4845.8640	4751.9857	576.041	ELB3	ELB3
3353	4843.6658	4740.1604	576.022	ELB3	ELB3
3354	4845.8880	4739.8920	572.248	ELB1	ELB1
3355	4848.4466	4753.5016	572.291	ELB1	ELB1
3356	4834.9799	4772.3934	572.536	ELB1	ELB1
3357	4827.7781	4782.3633	572.461	ELB1	ELB1
3358	4821.1680	4783.0475	573.639	SEL	SEL
3359	4825.2088	4842.3911	573.682	SEL	SEL
3360	4832.1919	4842.6672	573.522	DRV1	DRV1
3361	4834.1561	4842.5833	572.386	ELB1	ELB1
3362	4828.0436	4890.4962	573.517	SEL	SEL
3363	4836.5186	4889.3420	573.749	DRV1	DRV1
3364	4836.5246	4889.3472	573.749	ELB2	ELB2
3365	4837.5797	4882.6051	572.434	ELB1	ELB1
3366	4841.7098	4889.6597	572.522	ELB1	ELB1
3367	4841.4170	4891.0614	573.990	ELB2	ELB2
3368	4845.0601	4897.2734	574.803	ELB2	ELB2
3369	4847.1376	4896.7341	572.437	ELB1	ELB1
3370	4846.8725	4909.5385	572.488	ELB1	ELB1
3371	4842.4836	4907.5708	574.171	ELB2	ELB2
3372	4846.8143	4909.6213	572.440	ELB3	ELB3
3373	4841.9213	4908.9114	574.026	ELB2	ELB2
3374	4842.9780	4909.4805	573.168	ELB1	ELB1
3375	4842.9867	4909.4915	573.166	ELB4	ELB4
3376	4835.1853	4916.4926	573.254	ELB2	ELB2
3377	4835.1757	4916.4750	573.253	ELB1	ELB1
3378	4834.0151	4919.5130	573.698	ELB2	ELB2
3379	4834.0169	4919.5165	573.697	DRV1	DRV1
3380	4841.2827	4920.6136	573.120	ELB4	ELB4
3381	4843.7031	4922.2616	572.323	ELB3	ELB3

Number	Northing	Easting	Elevation	Raw Desc	Full Desc
3382	4828.2702	4920.6464	573.767	SEL	SEL
3383	4838.5356	4947.0974	572.854	DRV1	DRV1
3384	4838.5255	4947.0713	572.852	ELB1	ELB1
3385	4838.5273	4947.0771	572.851	ELB4	ELB4
3386	4840.9264	4947.5817	572.267	ELB3	ELB3
3387	4838.1508	4972.9037	573.533	DRV1	DRV1
3388	4838.1508	4972.9037	573.533	ELB1	ELB1
3389	4832.2946	4971.9626	573.786	SEL	SEL
3390	4838.8709	4974.4286	572.934	ELB3	ELB3
3391	4840.1827	4993.9059	573.269	ELB3	ELB3
3392	4839.7858	4995.0107	573.621	ELB1	ELB1
3393	4851.8398	4992.5623	573.528	ELB1	ELB1
3394	4851.2169	4991.3338	573.017	ELB1	ELB1
3395	4853.9066	4990.8128	574.432	ELB1	ELB1
3396	4856.0031	4985.8269	573.097	ELB3	ELB3
3397	4874.8076	4981.1168	573.171	ELB3	ELB3
3398	4868.2151	4988.8035	574.406	ELB1	ELB1
3399	4876.3931	4983.0154	573.891	ELB1	ELB1
3400	4870.2693	4970.8012	572.611	ELB3	ELB3
3401	4874.4852	4972.6105	573.270	ELB1	ELB1
3402	4880.1270	4920.5965	573.367	ELB1	ELB1
3403	4878.2881	4918.5073	572.734	ELB3	ELB3
3404	4915.5902	4906.4306	573.018	ELB3	ELB3
3405	4915.5751	4906.4252	573.018	ELB1	ELB1
3406	4916.2812	4866.5720	572.795	ELB1	ELB1
3407	4916.2832	4866.5721	572.795	ELB3	ELB3
3408	4924.2397	4884.1975	573.456	ELB1	ELB1
3409	4923.1105	4884.7732	572.644	ELB3	ELB3
3410	4923.4956	4902.2168	572.969	ELB3	ELB3
3411	4926.9272	4902.7308	573.930	ELB1	ELB1
3412	4927.8210	4906.7602	573.145	ELB1	ELB1
3413	4927.7869	4906.7485	573.144	ELB3	ELB3
3414	4897.5042	4847.4607	572.580	ELB1	ELB1
3415	4895.8292	4844.7464	573.787	ELB3	ELB3
3416	4883.0760	4842.8859	572.672	ELB1	ELB1
3417	4884.4652	4841.7381	575.050	ELB3	ELB3
3418	4880.7503	4829.2255	573.996	ELB3	ELB3
3419	4879.2968	4827.8548	572.768	ELB1	ELB1
3420	4887.5013	4819.6410	573.077	ELB1	ELB1
3421	4888.1318	4822.4531	574.437	ELB3	ELB3
3422	4897.1399	4826.5380	574.766	ELB3	ELB3
3423	4898.6337	4825.3443	573.157	ELB1	ELB1
3424	4900.5334	4834.4583	572.659	ELB1	ELB1
3425	4898.8390	4834.8006	575.009	ELB3	ELB3
3426	4899.1387	4838.8638	573.332	ELB3	ELB3
3427	4921.0872	4856.5067	572.791	ELB1	ELB1
3428	4921.0692	4856.5082	572.791	ELB3	ELB3
3429	4925.2510	4848.5470	574.999	ELB3	ELB3
3430	4924.1311	4847.5498	572.746	ELB1	ELB1
3431	4926.7051	4843.9484	573.414	ELB3	ELB3
3432	4929.3560	4831.4600	575.747	ELB3	ELB3
3433	4926.7716	4831.5248	573.074	ELB1	ELB1
3434	4923.3762	4825.6295	572.825	ELB1	ELB1
3435	4928.2936	4802.8692	572.723	ELB1	ELB1
3436	4932.9615	4804.3485	575.287	ELB3	ELB3
3437	4917.0282	4781.4420	575.606	ELB3	ELB3
3438	4912.8160	4783.9420	573.006	ELB1	ELB1
3439	4880.2624	4770.3361	572.923	ELB1	ELB1
3440	4882.2255	4767.7063	575.124	ELB3	ELB3
3441	4875.8974	4747.8939	573.207	ELB3	ELB3
3442	4875.8953	4747.8973	573.206	ELB1	ELB1
3443	4849.8515	4679.9222	572.303	ELB1	ELB1
3444	4849.8436	4679.9553	572.302	ELB3	ELB3

Number	Northing	Easting	Elevation	Raw Desc	Full Desc
3445	4853.9869	4716.2125	573.283	ELB3	ELB3
3446	4851.9959	4717.4327	572.368	ELB1	ELB1
3447	4856.6982	4723.1085	572.647	ELB1	ELB1
3448	4858.3462	4721.0267	573.394	ELB3	ELB3
3449	4867.1655	4723.3440	572.965	ELB3	ELB3
3450	4867.1613	4723.3553	572.965	ELB1	ELB1
3451	4824.1328	4971.0642	573.833	DRV1	DRV1
3452	4824.2197	4958.0809	573.262	ELB1	ELB1
3453	4820.0209	4907.4644	572.526	ELB1	ELB1
3454	4822.9009	4906.5696	573.344	DRV1	DRV1
3455	4819.4006	4855.0843	573.496	DRV1	DRV1
3456	4816.8772	4855.3104	572.332	ELB1	ELB1
3457	4815.9588	4803.1638	572.382	ELB1	ELB1
3458	4818.2418	4802.3607	573.087	DRV1	DRV1
3459	4815.5402	4783.9169	573.432	DRV1	DRV1
3460	4815.5387	4783.9288	573.431	ELB2	ELB2
3461	4812.6303	4784.6821	572.268	ELB1	ELB1
3462	4807.2601	4770.6480	572.015	ELB1	ELB1
3463	4809.2979	4770.8185	575.093	ELB2	ELB2
3464	4815.1245	4765.3989	573.606	DRV1	DRV1
3465	4808.4910	4748.1975	572.636	ELB1	ELB1
3466	4808.4906	4748.2135	572.636	ELB2	ELB2
3467	4810.6157	4745.6682	573.097	DRV1	DRV1
3468	4813.2035	4725.1757	573.614	DRV1	DRV1
3469	4810.0887	4724.4076	572.117	ELB1	ELB1
3470	4809.9129	4705.9921	572.074	ELB1	ELB1
3471	4814.6207	4682.8180	573.649	DRV1	DRV1
3472	4814.6220	4682.8081	573.649	ELB4	ELB4
3473	4807.6557	4689.0910	573.759	ELB4	ELB4
3474	4807.6555	4689.1110	573.759	ELB3	ELB3
3475	4808.4011	4685.5795	575.481	ELB3	ELB3
3476	4808.4019	4685.5815	575.481	ELB4	ELB4
3477	4803.7927	4685.8678	572.576	ELB1	ELB1
3478	4807.1984	4668.9987	574.729	ELB4	ELB4
3479	4807.1985	4668.9807	574.728	ELB5	ELB5
3480	4805.2225	4664.9929	572.988	ELB5	ELB5
3481	4800.9446	4665.4249	571.618	ELB1	ELB1
3482	4805.1758	4665.0749	572.960	ELB6	ELB6
3483	4812.9123	4667.9160	573.678	ELB6	ELB6
3484	4812.9096	4667.9919	573.677	DRV1	DRV1
3485	4811.2487	4671.5280	574.335	ELB4	ELB4
3486	4812.2221	4683.1073	575.079	ELB4	ELB4
3487	4808.8949	4685.5292	575.500	ELB4	ELB4
3488	4806.4171	4643.9536	573.415	DRV1	DRV1
3489	4806.4181	4643.9476	573.413	ELB5	ELB5
3490	4803.3454	4644.4758	571.856	ELB1	ELB1
3491	4786.8274	4626.4485	572.124	ELB1	ELB1
3492	4787.6901	4624.6434	573.207	DRV1	DRV1
3493	4768.1519	4631.5667	572.380	ELB1	ELB1
3494	4768.1572	4631.5922	572.380	ELB2	ELB2
3495	4769.7631	4634.8930	571.555	ELB1	ELB1
3496	4778.4969	4647.9126	571.529	ELB1	ELB1
3497	4776.4356	4647.8044	572.367	ELB2	ELB2
3498	4774.2600	4699.3445	572.742	ELB2	ELB2
3499	4775.9733	4699.1905	572.119	ELB1	ELB1
3500	4772.8774	4735.5679	572.732	ELB1	ELB1
3501	4772.8850	4735.5969	572.732	ELB2	ELB2
3502	4749.8384	4834.4285	572.257	ELB1	ELB1
3503	4747.8332	4838.0572	574.995	ELB2	ELB2
3504	4745.3253	4846.8844	576.354	ELB2	ELB2
3505	4748.1469	4849.3848	572.611	ELB1	ELB1
3506	4736.3492	4850.5557	572.463	ELB1	ELB1
3507	4739.3308	4847.9262	574.912	ELB2	ELB2

Number	Northing	Easting	Elevation	Raw Desc	Full Desc
3508	4736.0342	4846.4897	573.561	ELB2	ELB2
3509	4734.6559	4846.1168	572.592	ELB1	ELB1
3510	4741.7140	4836.8350	572.782	ELB1	ELB1
3511	4743.8111	4908.0014	573.441	ELB1	ELB1
3512	4743.8254	4908.0086	573.441	ELB2	ELB2
3513	4759.7395	4905.3111	572.644	ELB1	ELB1
3514	4758.6306	4907.7139	573.519	ELB2	ELB2
3515	4764.6633	4932.8725	573.321	ELB2	ELB2
3516	4767.4037	4935.3274	572.291	ELB1	ELB1
3517	4753.1660	4940.0531	572.726	ELB1	ELB1
3518	4754.0228	4937.9934	573.389	ELB2	ELB2
3519	4732.6478	4916.9709	573.757	ELB2	ELB2
3520	4730.2115	4915.3217	572.849	ELB1	ELB1
3521	4708.4641	4989.2304	573.233	ELB1	ELB1
3522	4708.4470	4989.2526	573.233	ELB2	ELB2
3523	4730.0599	4992.6745	572.456	ELB1	ELB1
3524	4729.4546	4993.3263	573.477	ELB2	ELB2
3525	4745.5830	4986.2513	573.633	ELB2	ELB2
3526	4744.5239	4986.0325	572.778	ELB1	ELB1
3527	4752.8148	4958.3530	572.955	ELB1	ELB1
3528	4754.4738	4959.6830	573.686	ELB2	ELB2
3529	4768.6744	4958.1631	573.321	ELB2	ELB2
3530	4771.1467	4956.8422	572.608	ELB1	ELB1
3531	4766.6943	4972.2981	572.940	ELB1	ELB1
3532	4765.1476	4974.7181	573.746	ELB2	ELB2
3533	4784.3423	4980.7244	573.397	ELB2	ELB2
3534	4784.3489	4980.6890	573.397	ELB1	ELB1
3535	4814.3422	4974.6375	573.444	ELB1	ELB1
3536	4814.3426	4974.6415	573.444	ELB2	ELB2
3537	4812.4932	4962.6939	572.926	ELB1	ELB1
3538	4816.1847	4964.7032	574.010	ELB2	ELB2
3539	4823.6152	4957.2746	572.896	ELB1	ELB1
3540	4824.9058	4962.8288	573.937	ELB2	ELB2
3541	4793.6946	4691.4916	571.910	SEL	SEL
3542	4764.8983	4692.0687	572.907	SEL	SEL
3543	4752.3552	4736.9690	572.950	SEL	SEL
3544	4788.5240	4739.1783	572.146	SEL	SEL
3545	4853.4059	4743.0919	572.347	SEL	SEL
3546	4886.7474	4738.6825	573.039	SEL	SEL
3547	4922.0945	4784.1757	575.142	SEL	SEL
3548	4864.5778	4792.1040	572.461	SEL	SEL
3549	4812.7811	4796.2156	572.209	SEL	SEL
3550	4759.2980	4800.9145	572.086	SEL	SEL
3551	4703.3981	4799.9817	573.152	SEL	SEL
3552	4685.7621	4848.8046	573.253	SEL	SEL
3553	4730.9655	4847.5179	572.509	SEL	SEL
3554	4775.4282	4845.8942	571.812	SEL	SEL
3555	4815.7525	4842.5427	572.458	SEL	SEL
3556	4854.0867	4838.4160	572.508	SEL	SEL
3557	4904.2059	4831.2683	572.698	SEL	SEL
3558	4934.4830	4824.3504	575.553	SEL	SEL
3559	4929.1578	4885.0373	572.906	SEL	SEL
3560	4881.9525	4886.5845	572.212	SEL	SEL
3561	4841.7915	4887.1317	572.144	SEL	SEL
3562	4778.5990	4893.3929	572.202	SEL	SEL
3563	4723.6205	4897.9171	572.604	SEL	SEL
3564	4672.1662	4906.6471	573.245	SEL	SEL
3565	4704.7582	4958.0716	573.651	SEL	SEL
3566	4762.3492	4951.2491	572.582	SEL	SEL
3567	4811.0364	4934.8021	572.181	SEL	SEL
3568	4860.5900	4923.3360	572.260	SEL	SEL
3569	4887.4303	4924.5083	572.527	SEL	SEL
3570	4891.6880	4899.7817	572.639	SEL	SEL

Number	Northing	Easting	Elevation	Raw Desc	Full Desc
3571	4932.7347	4910.0879	573.374	SEL	SEL
3572	4884.1500	4969.7424	573.277	SEL	SEL
3573	4874.4468	4996.1756	573.675	SEL	SEL
3574	4854.1658	4996.2774	573.488	SEL	SEL
3575	4857.5698	4972.5573	572.673	SEL	SEL
3576	4801.8603	4977.0346	573.027	SEL	SEL
3577	4803.2729	4994.6563	573.640	SEL	SEL
3578	4775.8254	4972.7375	572.975	SEL	SEL
3579	4769.7717	4989.5476	573.498	SEL	SEL
3580	4728.2399	4983.0018	572.866	SEL	SEL
3581	4725.8870	4996.6023	573.630	SEL	SEL
3582	4690.1122	4973.3105	573.840	SEL	SEL
3583	4700.5065	4990.2853	573.394	SEL	SEL
3584	4713.5894	4949.8129	573.501	SEL	SEL
3585	4728.6672	4936.2388	572.933	SEL	SEL
3586	4909.5444	4859.2867	572.953	CHK HPT 56	CHK HPT 56
3590	4655.5588	4219.6354	573.458	CHK HPT 52	CHK HPT 52
3591	4653.6748	4276.4307	573.317	DRV1	DRV1
3592	4642.2308	4274.8943	573.209	DRV2	DRV2
3593	4647.7901	4278.3409	573.495	SEL	SEL
3595	4650.9822	4346.5271	573.548	CHK HPT 53	CHK HPT 53
3596	4631.7200	4319.4165	573.013	DRV2	DRV2
3597	4631.7238	4319.4235	573.013	ML2	ML2
3598	4644.9330	4348.5080	572.782	DRV1	DRV1
3599	4644.9761	4348.5870	572.782	ML1	ML1
3600	4621.3629	4369.3389	572.743	DRV2	DRV2
3601	4602.0001	4391.5719	572.588	DRV2	DRV2
3602	4549.1366	4393.3567	573.174	DRV2	DRV2
3603	4599.5042	4351.0566	573.410	TRE 8	8
3604	4570.8529	4335.6775	572.968	ML2	ML2
3605	4576.1126	4359.8062	573.273	ML2	ML2
3606	4564.3751	4377.6952	573.279	ML2	ML2
3607	4552.9131	4376.6967	573.146	ML2	ML2
3608	4547.1407	4352.1833	573.265	ML2	ML2
3609	4528.4201	4353.8351	573.194	ML2	ML2
3610	4525.4267	4395.1164	573.413	ML2	ML2
3611	4525.4174	4395.1089	573.412	DRV2	DRV2
3612	4526.6455	4450.6658	573.205	DRV2	DRV2
3613	4526.6524	4450.6698	573.205	ML2	ML2
3614	4530.6710	4500.4935	572.895	ML2	ML2
3615	4531.7982	4528.9383	573.015	ML2	ML2
3616	4568.6102	4532.4340	572.921	ML2	ML2
3617	4606.7068	4509.9067	573.085	ML2	ML2
3618	4625.2286	4513.7907	573.397	ML2	ML2
3619	4540.3849	4448.7304	572.678	DRV2	DRV2
3620	4591.7268	4449.0684	572.568	DRV2	DRV2
3621	4626.2556	4453.5408	573.615	DRV2	DRV2
3622	4643.5890	4396.0641	572.453	DRV1	DRV1
3623	4654.9518	4447.5099	573.224	DRV1	DRV1
3624	4633.0558	4394.7387	572.675	SEL	SEL
3625	4643.4211	4449.4319	573.203	SEL	SEL
3626	4619.1510	4420.3276	573.028	SEL	SEL
3627	4571.2605	4416.6991	572.591	SEL	SEL
3628	4527.2739	4415.5347	573.362	SEL	SEL
3629	4538.4768	4372.2949	573.416	SEL	SEL
3630	4590.5318	4354.7753	573.496	SEL	SEL
3631	4545.3704	4498.0040	572.850	SEL	SEL
3632	4592.3683	4496.1151	573.102	SEL	SEL
3633	4629.1292	4499.7890	573.313	SEL	SEL
3634	4617.5552	4496.1621	573.462	TRE 24	24
3635	4609.3785	4457.0905	573.322	TRE 12	12
3636	4594.2653	4470.7001	573.234	TRE 10	10
3637	4582.3596	4487.0857	573.355	TRE 8	8

Number	Northing	Easting	Elevation	Raw Desc	Full Desc
3638	4577.4548	4483.6286	573.177	TRE 8	8
3639	4576.1278	4487.2697	573.272	TRE 8	8
3640	4570.2703	4485.2472	573.177	TRE 8	8
3641	4559.8984	4465.3106	573.277	TRE 10	10
3642	4537.5936	4474.5444	573.152	TRE 10	10
3643	4537.2596	4494.5031	573.262	TRE 15	15
3644	4538.0944	4511.3391	573.238	TRE 12	12
3645	4541.6908	4523.3848	573.260	TRE 8	8
3646	4549.1568	4517.1932	573.375	TRE 8	8
3647	4552.0120	4514.9949	573.407	TRE 8	8
3648	4569.3934	4511.3466	573.201	TRE 8	8
3649	4573.8851	4509.5420	573.188	TRE 8	8
3650	4649.1120	4509.0205	573.394	DRV2	DRV2
3651	4669.3475	4506.5311	573.145	DRV1	DRV1
3652	4662.1904	4507.7465	573.266	SEL	SEL
3653	4644.3607	4525.0361	572.882	SEL	SEL
3654	4636.9510	4552.5804	572.930	ML2	ML2
3655	4651.6586	4547.7387	573.003	ML2	ML2
3656	4655.7368	4550.8926	573.092	ML2	ML2
3657	4672.6779	4553.9543	573.388	DRV2	DRV2
3658	4680.0285	4549.8597	573.544	SEL	SEL
3659	4689.0561	4544.9511	573.108	DRV1	DRV1
3660	4705.9989	4560.2477	573.058	DRV1	DRV1
3661	4702.2440	4567.5350	573.183	SEL	SEL
3662	4696.9787	4575.1124	573.284	DRV2	DRV2
3663	4678.3925	4579.8278	573.406	TRE 14	14
3664	4663.3619	4574.3619	573.064	SEL	SEL
3665	4647.5714	4581.5917	573.024	ML2	ML2
3666	4646.5641	4593.0358	573.113	ML2	ML2
3667	4637.6865	4598.1389	572.866	ML2	ML2
3668	4649.3338	4632.7431	573.044	ML2	ML2
3669	4685.3344	4612.5127	573.123	ML2	ML2
3670	4672.3770	4601.4134	572.941	SEL	SEL
3671	4708.7551	4601.1147	572.994	ML2	ML2
3672	4742.6405	4582.7016	572.703	DRV1	DRV1
3673	4739.9976	4589.1450	573.022	SEL	SEL
3674	4737.3640	4595.9575	572.961	DRV2	DRV2
3675	4725.8440	4616.9954	572.757	ML2	ML2
3676	4761.7576	4634.9701	573.225	ML2	ML2
3677	4776.2275	4616.6208	573.042	DRV2	DRV2
3678	4779.3330	4610.3807	573.263	SEL	SEL
3679	4787.5035	4602.3534	573.042	DRV1	DRV1
3680	4816.7727	4623.0110	573.824	DRV1	DRV1
3681	4810.5932	4628.4278	573.559	SEL	SEL
3682	4803.2369	4636.7003	573.283	DRV2	DRV2
3683	4827.3393	4675.6535	573.385	DRV1	DRV1
3684	4821.4623	4675.8660	573.677	SEL	SEL
3685	4814.2111	4677.0772	573.689	DRV2	DRV2
3686	4814.1976	4677.0448	573.689	ELB2	ELB2
3687	4815.2278	4687.2392	573.618	DRV2	DRV2
3688	4815.2348	4687.2590	573.618	ELB2	ELB2
3689	4807.8461	4689.8223	573.569	ELB2	ELB2
3690	4805.5842	4672.7649	573.567	ELB2	ELB2
3691	4807.8451	4676.7312	575.179	ELB2	ELB2
3692	4808.2533	4683.8702	575.477	ELB2	ELB2
3693	4812.9695	4682.7665	575.177	ELB2	ELB2
3694	4813.2107	4678.6531	574.590	ELB2	ELB2
3695	4811.1545	4678.2810	574.978	TRE 40	40
3696	4826.8212	4696.2596	573.254	DRV1	DRV1
3697	4821.8358	4696.8496	573.321	SEL	SEL
3698	4813.3153	4699.4821	573.423	DRV2	DRV2
3699	4790.8801	4699.3898	572.690	SEL	SEL
3700	4763.4939	4702.6310	572.923	ML2	ML2

Number	Northing	Easting	Elevation	Raw Desc	Full Desc
3701	4763.7972	4743.4053	573.068	ML2	ML2
3702	4786.2053	4748.7679	572.222	SEL	SEL
3703	4819.5849	4748.2198	573.298	SEL	SEL
3704	4813.4947	4703.5371	573.300	DRV2	DRV2
3705	4813.4896	4703.5219	573.300	ELB2	ELB2
3706	4813.4041	4729.1675	573.438	DRV2	DRV2
3707	4810.6258	4729.3620	572.674	ELB2	ELB2
3708	4810.6317	4729.3893	572.675	ELB4	ELB4
3709	4809.7665	4749.1237	573.164	ELB2	ELB2
3710	4807.1811	4748.7634	572.518	ELB4	ELB4
3711	4806.3124	4771.5124	572.590	ELB4	ELB4
3712	4808.7632	4771.3207	574.234	ELB2	ELB2
3713	4811.1416	4770.0813	574.876	TRE 30	30
3714	4808.6623	4782.2455	572.916	ELB2	ELB2
3715	4808.6605	4782.2326	572.919	ELB4	ELB4
3716	4814.8241	4775.6450	574.165	ELB4	ELB4
3717	4814.9888	4771.0253	574.666	ELB4	ELB4
3718	4814.3872	4762.3492	573.434	ELB4	ELB4
3719	4814.3852	4762.3394	573.435	DRV2	DRV2
3720	4816.4931	4770.8218	573.626	DRV2	DRV2
3721	4816.1893	4775.6444	573.651	DRV2	DRV2
3722	4825.6117	4736.8005	573.247	DRV1	DRV1
3723	4825.6062	4736.7855	573.249	ELB1	ELB1
3724	4843.1067	4729.7449	573.659	ELB1	ELB1
3725	4851.3114	4748.8894	573.436	ELB1	ELB1
3726	4836.5818	4775.5616	573.575	ELB1	ELB1
3727	4826.1479	4746.9721	573.305	DRV1	DRV1
3728	4828.1583	4784.6165	573.552	DRV1	DRV1
3729	4828.1523	4784.5964	573.554	ELB1	ELB1
3730	4828.1513	4784.5925	573.554	ELB3	ELB3
3731	4828.9803	4765.1408	574.398	ELB3	ELB3
3732	4828.5641	4757.2733	574.569	ELB3	ELB3
3733	4829.4472	4747.9638	574.103	ELB3	ELB3
3734	4835.3311	4737.8400	575.624	ELB3	ELB3
3735	4841.2548	4737.6537	575.881	ELB3	ELB3
3736	4844.0537	4748.6363	575.940	ELB3	ELB3
3737	4843.5483	4757.1125	574.420	ELB3	ELB3
3738	4839.3219	4742.7599	576.087	TRE 48	48
3739	4829.9790	4756.8051	574.570	TRE 10	10
3740	4829.4336	4768.2438	574.673	TRE 24	24
3741	4828.1221	4799.8089	573.277	DRV1	DRV1
3742	4824.1291	4800.3139	573.385	SEL	SEL
3743	4816.7674	4804.4001	573.017	DRV2	DRV2
3744	4803.8831	4804.4128	572.375	ELB2	ELB2
3745	4749.8879	4805.1145	572.372	SEL	SEL
3746	4714.4251	4807.3688	573.061	ML2	ML2
3747	4712.6003	4844.2801	573.202	ML2	ML2
3748	4733.7815	4848.1068	572.718	ELB6	ELB6
3749	4742.7403	4835.8216	572.598	ELB6	ELB6
3750	4749.9385	4833.6875	572.300	ELB6	ELB6
3751	4749.1242	4850.0579	572.394	ELB6	ELB6
3752	4737.7068	4850.5505	572.607	ELB6	ELB6
3753	4740.0384	4847.8499	575.711	ELB6	ELB6
3754	4745.3836	4846.5004	576.684	ELB6	ELB6
3755	4746.0741	4838.6996	575.486	ELB6	ELB6
3756	4737.8267	4845.5437	574.366	ELB6	ELB6
3757	4742.3420	4842.8073	576.131	TRE 48	48
3758	4832.3060	4851.5354	573.880	DRV1	DRV1
3759	4828.8494	4851.7086	573.962	SEL	SEL
3760	4820.3409	4851.6535	573.649	DRV2	DRV2
3761	4807.5388	4853.1044	572.482	ELB2	ELB2
3762	4750.7926	4858.0924	572.297	SEL	SEL
3763	4705.9574	4864.8984	572.749	SEL	SEL

Number	Northing	Easting	Elevation	Raw Desc	Full Desc
3764	4683.7447	4867.4944	573.062	ML2	ML2
3765	4688.9951	4880.7202	573.003	ML2	ML2
3766	4672.5269	4900.9745	573.389	ML2	ML2
3767	4680.2698	4922.9391	573.409	ML2	ML2
3768	4701.1320	4924.4815	573.099	ML2	ML2
3769	4728.2109	4954.0629	573.466	ML2	ML2
3770	4705.3052	4975.7758	573.552	ML2	ML2
3771	4708.0599	4989.0830	573.336	ML2	ML2
3772	4708.0619	4989.0722	573.336	ELB5	ELB5
3773	4727.1100	4993.2924	572.511	ML2	ML2
3774	4726.9523	4994.8223	573.716	ELB5	ELB5
3775	4744.3031	4988.7571	573.400	ELB5	ELB5
3776	4743.3948	4986.0513	572.963	ML2	ML2
3777	4746.2076	4968.4531	573.259	ML2	ML2
3778	4746.2074	4968.4370	573.259	ELB5	ELB5
3779	4753.8006	4955.8188	573.040	ML2	ML2
3780	4755.8782	4959.0501	574.055	ELB5	ELB5
3781	4768.7641	4956.7060	573.114	ELB5	ELB5
3782	4768.7643	4956.7000	573.112	ML2	ML2
3783	4782.6759	4957.4430	572.429	ELB5	ELB5
3784	4767.2957	4934.5299	572.473	ELB7	ELB7
3785	4764.6741	4932.4724	573.383	ELB8	ELB8
3786	4758.8909	4907.7469	573.666	ELB8	ELB8
3787	4759.8037	4905.9392	572.792	ELB7	ELB7
3788	4743.3151	4906.2666	573.034	ELB7	ELB7
3789	4743.2199	4909.4589	573.587	ELB8	ELB8
3790	4734.6108	4919.6022	573.664	ELB8	ELB8
3791	4733.1136	4922.0989	572.979	ELB7	ELB7
3792	4749.7414	4939.1520	572.845	ELB7	ELB7
3793	4750.2217	4936.4173	573.489	ELB8	ELB8
3794	4835.2159	4912.9360	573.651	TRE 24	24
3795	4840.3460	4896.7325	573.993	TRE 12	12
3796	4821.7890	4898.3617	573.519	DRV2	DRV2
3797	4827.2947	4899.0656	573.694	SEL	SEL
3798	4833.7570	4906.6678	573.779	DRV1	DRV1
3799	4813.2300	4896.3809	572.071	ELB2	ELB2
3800	4814.6724	4900.4419	572.414	ELB2	ELB2
3801	4814.6680	4900.4011	572.412	ELB4	ELB4
3802	4816.8538	4908.2395	573.197	ELB4	ELB4
3803	4814.3921	4908.2238	572.241	ELB2	ELB2
3804	4817.8613	4924.6225	572.121	ELB2	ELB2
3805	4819.8449	4923.8939	572.936	ELB4	ELB4
3806	4823.1900	4926.2019	573.466	ELB4	ELB4
3807	4823.1922	4926.2198	573.466	DRV2	DRV2
3808	4820.2796	4926.6323	572.297	ELB2	ELB2
3809	4824.5776	4946.6800	573.434	DRV2	DRV2
3810	4824.5768	4946.6741	573.432	ELB4	ELB4
3811	4821.1458	4946.8862	572.372	ELB2	ELB2
3812	4818.8103	4960.9558	573.074	ELB2	ELB2
3813	4821.6897	4962.3657	574.095	ELB4	ELB4
3814	4824.0686	4962.1287	573.945	DRV2	DRV2
3815	4829.2337	4946.0649	573.565	SEL	SEL
3816	4834.3306	4947.2526	573.203	DRV1	DRV1
3817	4813.7670	4964.1326	574.133	ELB4	ELB4
3818	4812.4940	4962.4904	573.001	ELB2	ELB2
3819	4812.4942	4962.4924	573.004	ELB5	ELB5
3820	4810.9660	4970.8254	573.148	ELB2	ELB2
3821	4814.3068	4970.8757	574.277	ELB4	ELB4
3822	4818.0430	4968.8052	574.947	TRE 12	12
3823	4771.4959	4978.8860	573.533	ML2	ML2
3824	4798.9840	4985.2609	573.476	ML2	ML2
3825	4822.5066	4976.9432	573.928	DRV2	DRV2
3826	4822.5063	4976.9402	573.937	ELB2	ELB2

Number	Northing	Easting	Elevation	Raw Desc	Full Desc
3827	4822.5095	4976.9529	573.933	ELB4	ELB4
3828	4823.4904	4992.9281	573.920	DRV2	DRV2
3829	4823.4876	4992.9204	573.924	ML2	ML2
3830	4832.3854	4993.7751	573.817	DRV2	DRV2
3831	4832.3899	4993.8108	573.817	DRV1	DRV1
3832	4832.3864	4993.7830	573.813	ML2	ML2
3833	4827.9650	4993.1922	573.817	SEL	SEL
3834	4763.6648	4899.0350	572.436	SEL	SEL
3835	4717.0764	4909.0334	572.777	SEL	SEL
3836	4735.0298	4957.1606	573.005	SEL	SEL
3837	4783.9669	4951.8130	572.322	SEL	SEL
3838	4866.6948	4992.0341	573.190	ML2	ML2
3839	4884.8524	4949.5923	573.134	ML2	ML2
3840	4856.7947	4947.1419	572.681	SEL	SEL
3841	4907.2934	4913.0494	573.166	ML2	ML2
3842	4872.6460	4908.4339	572.787	SEL	SEL
3843	4926.8080	4897.8072	573.286	ML2	ML2
3844	4919.4290	4864.9875	573.023	ML2	ML2
3845	4927.4334	4842.1777	573.527	ML2	ML2
3846	4913.5278	4838.9391	573.608	TRE 12	12
3847	4886.0198	4837.4754	574.859	TRE 24	24
3848	4884.5020	4853.0551	573.263	SEL	SEL
3849	4883.9479	4819.2895	573.424	ELB1	ELB1
3850	4883.9441	4819.2814	573.425	ELB3	ELB3
3851	4879.3219	4838.8272	573.676	ELB1	ELB1
3852	4883.9606	4840.1918	574.768	ELB3	ELB3
3853	4891.1502	4843.9871	574.879	ELB3	ELB3
3854	4894.9810	4848.3365	573.285	ELB1	ELB1
3855	4898.0661	4824.8199	573.313	ELB1	ELB1
3856	4894.7589	4826.6637	574.351	ELB3	ELB3
3857	4889.4488	4823.1502	574.502	ELB3	ELB3
3858	4889.9388	4818.4318	573.408	ELB1	ELB1
3859	4946.5787	4828.1090	573.333	ML2	ML2
3860	4948.3559	4810.7335	573.389	ML2	ML2
3861	4899.8646	4807.7974	573.212	SEL	SEL
3862	4845.9399	4802.6149	572.869	SEL	SEL
3863	4942.9284	4783.7634	573.562	ML2	ML2
3864	4894.5352	4754.7927	573.665	ML2	ML2
3865	4884.7256	4743.0926	572.852	ML2	ML2
3866	4863.9691	4746.6298	572.976	SEL	SEL
3867	4857.1215	4720.3045	573.750	TRE 8	8
3868	4856.3748	4716.5486	573.851	TRE 8	8
3869	4893.3679	4717.6822	572.953	ML2	ML2
3870	4876.5909	4698.6666	572.970	ML2	ML2
3871	4852.6412	4694.0542	573.176	ML2	ML2
3872	4854.6894	4664.7134	572.609	ML2	ML2
3873	4840.4395	4663.0083	573.171	SEL	SEL
3874	4844.4259	4613.2569	572.946	SEL	SEL
3875	4897.8104	4570.1214	572.445	ML2	ML2
3876	4898.2787	4544.0695	572.846	ML2	ML2
3877	4948.9378	4528.8591	572.787	ML2	ML2
3878	4968.7465	4508.6216	572.776	ML2	ML2
3879	4982.0000	4483.7407	572.819	ML2	ML2
3880	4984.7963	4453.5368	572.836	ML2	ML2
3881	4979.0536	4401.3923	573.345	ML2	ML2
3882	4970.4810	4382.2852	573.931	ML2	ML2
3883	4929.4392	4398.8052	572.434	SEL	SEL
3884	4914.8536	4443.0989	572.483	SEL	SEL
3885	4933.3687	4366.4789	573.389	ML2	ML2
3886	4918.4623	4349.6572	573.670	ML2	ML2
3887	4892.3445	4343.6499	574.223	ML2	ML2
3888	4887.0178	4365.5700	572.872	SEL	SEL
3889	4882.6183	4390.9884	572.532	SEL	SEL

Number	Northing	Easting	Elevation	Raw Desc	Full Desc
3890	4874.5947	4439.9258	572.448	SEL	SEL
3891	4851.3669	4492.7977	572.601	SEL	SEL
3892	4835.2663	4527.8433	572.668	SEL	SEL
3893	4810.8965	4569.9601	572.856	SEL	SEL
3894	4761.3255	4557.3269	572.357	SEL	SEL
3895	4756.4308	4574.4845	572.263	SEL	SEL
3896	4768.8022	4515.8040	572.363	SEL	SEL
3897	4784.6230	4466.6124	572.659	SEL	SEL
3898	4802.6270	4419.7762	572.793	SEL	SEL
3899	4821.6115	4371.9192	572.836	SEL	SEL
3900	4848.4807	4332.1419	574.519	SEL	SEL
3901	4850.3385	4327.8669	574.412	ML2	ML2
3902	4815.6028	4325.1301	574.670	ML2	ML2
3903	4814.3304	4331.8144	574.431	ML2	ML2
3904	4798.0908	4334.1394	573.778	ML2	ML2
3905	4786.4813	4344.9237	574.018	TRE 4	4
3906	4788.7625	4346.4171	573.534	TRE 4	4
3907	4754.1875	4343.6440	573.442	TRE 8	8
3908	4750.5754	4347.9519	573.199	TRE 8	8
3909	4779.9968	4329.2285	573.771	ML2	ML2
3910	4747.3214	4327.5551	573.932	ML2	ML2
3911	4718.1957	4330.1529	573.055	ML2	ML2
3912	4702.8342	4340.5076	573.118	ML2	ML2
3913	4691.4644	4343.2761	573.269	ML2	ML2
3914	4671.4901	4343.9966	573.449	ML2	ML2
3915	4652.6502	4349.6503	573.117	ML2	ML2
3916	4652.6667	4349.6823	573.118	ML1	ML1
3917	4788.2726	4383.5368	572.513	SEL	SEL
3918	4779.7424	4431.3079	572.867	SEL	SEL
3919	4769.7377	4483.3220	572.570	SEL	SEL
3920	4760.0955	4533.6164	572.454	SEL	SEL
3921	4746.8591	4577.6155	572.180	SEL	SEL
3922	4705.0047	4549.0714	572.623	SEL	SEL
3923	4712.0839	4498.3122	572.454	SEL	SEL
3924	4720.3553	4447.8891	572.567	SEL	SEL
3925	4727.8440	4400.5172	572.915	SEL	SEL
3926	4739.7352	4350.2757	573.279	SEL	SEL
3927	4685.5841	4391.4379	572.829	SEL	SEL
3928	4680.4621	4440.1733	572.940	SEL	SEL
3929	4673.9462	4486.5773	572.688	SEL	SEL
3930	4650.7282	4387.2542	572.405	SEL	SEL
3931	4650.9822	4346.5271	573.556	CHK HPT 53	CHK HPT 53