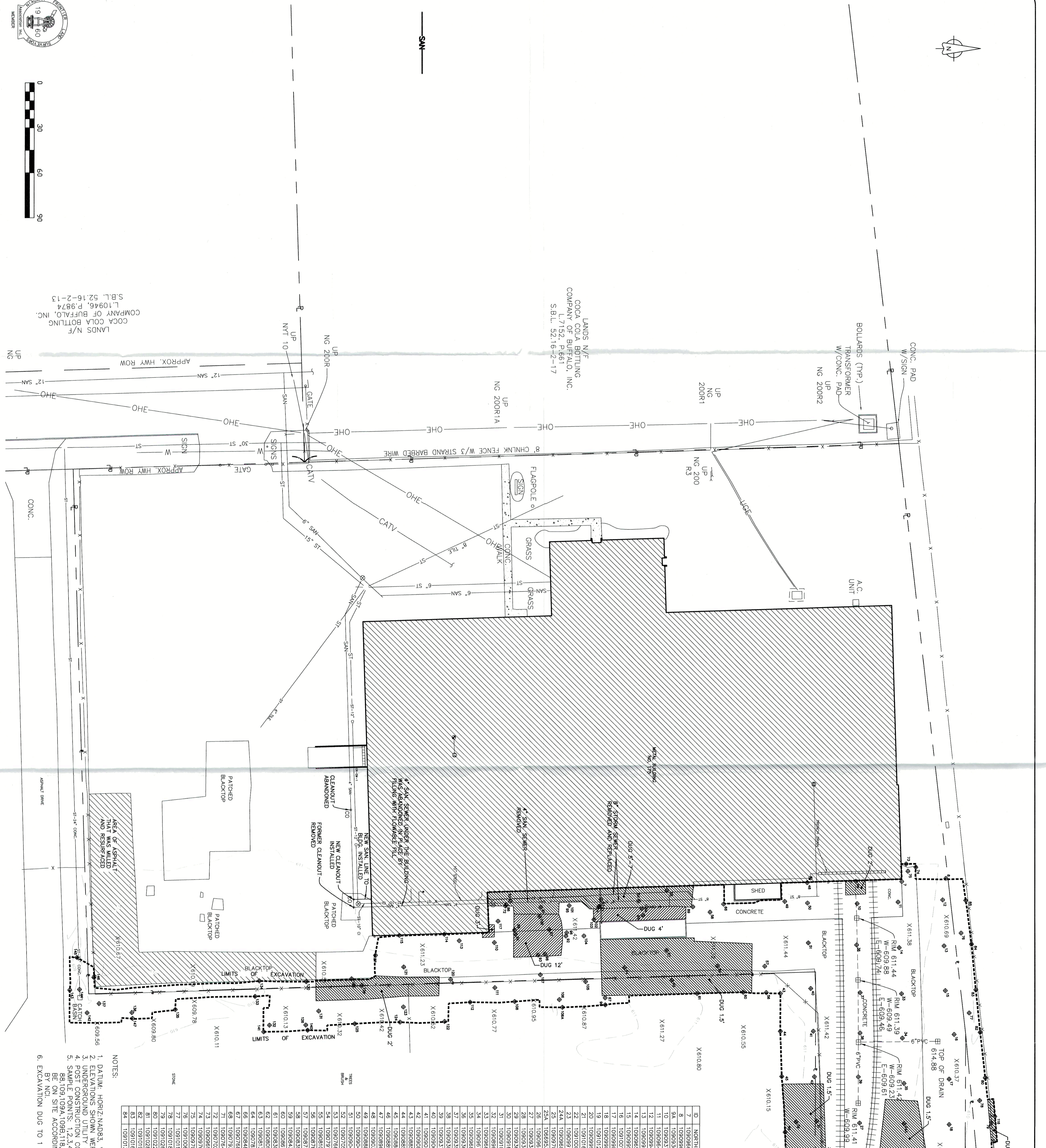


LANDS N/F
COCA COLA BOTTLING
COMPANY OF BUFFALO, INC.
L.10946, P.9874
S.B.L. 52-16-2-13

LANDS N/F
COCA COLA BOTTLING
COMPANY OF BUFFALO, INC.
L.7152, P.661
S.B.L. 52-16-2-17



NOTES:

1. DATUM: HORIZ: NAD83, VERT: NAVD88
2. ELEVATIONS SHOWN WERE FIELD LOCATED JAN. 11, 2016
3. UTILITIES SHOWN ARE AS SHOWN BY AECOM
4. DUCT CONSTRUCTION SHALL BE SHOWN BY AECOM
5. SAMPLE POINTS: 1, 2, 3, 4, 5, 6, 7, 8, 9, 10, 11, 12, 13, 14, 15 ARE STATED TO BE ON SITE ACCORDING TO AECOM, BUT WERE NOT LOCATED BY NCI.
6. EXCAVATION DUG TO 1 FOOT EXCEPT AS NOTED.

| ID | NORTHING | EASTING | ELEV. |
|----|------------|------------|--------|
| 7 | 1090966.73 | 1068764.20 | 610.44 |
| 8 | 1090966.73 | 1068762.16 | 609.94 |
| 9A | 1090936.16 | 1068764.03 | 609.68 |
| 9B | 1090936.16 | 1068762.16 | 610.44 |
| 10 | 1090922.57 | 1068779.32 | 610.43 |
| 11 | 1090922.57 | 1068779.32 | 610.43 |
| 12 | 1090922.57 | 1068779.32 | 610.43 |
| 13 | 1090922.57 | 1068779.32 | 610.43 |
| 14 | 1090922.57 | 1068779.32 | 610.43 |
| 15 | 1090922.57 | 1068779.32 | 610.43 |
| 16 | 1090922.57 | 1068779.32 | 610.43 |
| 17 | 1090922.57 | 1068779.32 | 610.43 |
| 18 | 1090922.57 | 1068779.32 | 610.43 |
| 19 | 1090922.57 | 1068779.32 | 610.43 |
| 20 | 1090922.57 | 1068779.32 | 610.43 |
| 21 | 1090922.57 | 1068779.32 | 610.43 |
| 22 | 1090922.57 | 1068779.32 | 610.43 |
| 23 | 1090922.57 | 1068779.32 | 610.43 |
| 24 | 1090922.57 | 1068779.32 | 610.43 |
| 25 | 1090922.57 | 1068779.32 | 610.43 |
| 26 | 1090922.57 | 1068779.32 | 610.43 |
| 27 | 1090922.57 | 1068779.32 | 610.43 |
| 28 | 1090922.57 | 1068779.32 | 610.43 |
| 29 | 1090922.57 | 1068779.32 | 610.43 |
| 30 | 1090922.57 | 1068779.32 | 610.43 |
| 31 | 1090922.57 | 1068779.32 | 610.43 |
| 32 | 1090922.57 | 1068779.32 | 610.43 |
| 33 | 1090922.57 | 1068779.32 | 610.43 |
| 34 | 1090922.57 | 1068779.32 | 610.43 |
| 35 | 1090922.57 | 1068779.32 | 610.43 |
| 36 | 1090922.57 | 1068779.32 | 610.43 |
| 37 | 1090922.57 | 1068779.32 | 610.43 |
| 38 | 1090922.57 | 1068779.32 | 610.43 |
| 39 | 1090922.57 | 1068779.32 | 610.43 |
| 40 | 1090922.57 | 1068779.32 | 610.43 |
| 41 | 1090922.57 | 1068779.32 | 610.43 |
| 42 | 1090922.57 | 1068779.32 | 610.43 |
| 43 | 1090922.57 | 1068779.32 | 610.43 |
| 44 | 1090922.57 | 1068779.32 | 610.43 |
| 45 | 1090922.57 | 1068779.32 | 610.43 |
| 46 | 1090922.57 | 1068779.32 | 610.43 |
| 47 | 1090922.57 | 1068779.32 | 610.43 |
| 48 | 1090922.57 | 1068779.32 | 610.43 |
| 49 | 1090922.57 | 1068779.32 | 610.43 |
| 50 | 1090922.57 | 1068779.32 | 610.43 |
| 51 | 1090922.57 | 1068779.32 | 610.43 |
| 52 | 1090922.57 | 1068779.32 | 610.43 |
| 53 | 1090922.57 | 1068779.32 | 610.43 |
| 54 | 1090922.57 | 1068779.32 | 610.43 |
| 55 | 1090922.57 | 1068779.32 | 610.43 |
| 56 | 1090922.57 | 1068779.32 | 610.43 |
| 57 | 1090922.57 | 1068779.32 | 610.43 |
| 58 | 1090922.57 | 1068779.32 | 610.43 |
| 59 | 1090922.57 | 1068779.32 | 610.43 |
| 60 | 1090922.57 | 1068779.32 | 610.43 |
| 61 | 1090922.57 | 1068779.32 | 610.43 |
| 62 | 1090922.57 | 1068779.32 | 610.43 |
| 63 | 1090922.57 | 1068779.32 | 610.43 |
| 64 | 1090922.57 | 1068779.32 | 610.43 |
| 65 | 1090922.57 | 1068779.32 | 610.43 |
| 66 | 1090922.57 | 1068779.32 | 610.43 |
| 67 | 1090922.57 | 1068779.32 | 610.43 |
| 68 | 1090922.57 | 1068779.32 | 610.43 |
| 69 | 1090922.57 | 1068779.32 | 610.43 |
| 70 | 1090922.57 | 1068779.32 | 610.43 |
| 71 | 1090922.57 | 1068779.32 | 610.43 |
| 72 | 1090922.57 | 1068779.32 | 610.43 |
| 73 | 1090922.57 | 1068779.32 | 610.43 |
| 74 | 1090922.57 | 1068779.32 | 610.43 |
| 75 | 1090922.57 | 1068779.32 | 610.43 |
| 76 | 1090922.57 | 1068779.32 | 610.43 |
| 77 | 1090922.57 | 1068779.32 | 610.43 |
| 78 | 1090922.57 | 1068779.32 | 610.43 |
| 79 | 1090922.57 | 1068779.32 | 610.43 |
| 80 | 1090922.57 | 1068779.32 | 610.43 |
| 81 | 1090922.57 | 1068779.32 | 610.43 |
| 82 | 1090922.57 | 1068779.32 | 610.43 |
| 83 | 1090922.57 | 1068779.32 | 610.43 |
| 84 | 1090922.57 | 1068779.32 | 610.43 |

| ID | NORTHING | EASTING | ELEV. |
|-----|------------|------------|--------|
| 85 | 1091008.47 | 1068776.81 | 608.97 |
| 86 | 1090702.88 | 1068779.63 | 606.11 |
| 87 | 1090702.88 | 1068780.63 | 606.93 |
| 88 | 1090702.88 | 1068781.06 | 609.71 |
| 89 | 1090702.88 | 1068781.45 | 609.17 |
| 90 | 1090702.88 | 1068781.84 | 605.17 |
| 91 | 1090702.88 | 1068782.23 | 609.44 |
| 92 | 1090702.88 | 1068782.62 | 603.97 |
| 93 | 1090702.88 | 1068783.01 | 604.60 |
| 94 | 1090702.88 | 1068783.40 | 606.10 |
| 95 | 1090702.88 | 1068783.79 | 599.40 |
| 96 | 1090702.88 | 1068784.18 | 602.19 |
| 97 | 1090702.88 | 1068784.57 | 602.16 |
| 98 | 1090702.88 | 1068784.96 | 602.19 |
| 99 | 1090702.88 | 1068785.35 | 602.19 |
| 100 | 1090702.88 | 1068785.74 | 606.10 |
| 101 | 1090702.88 | 1068786.13 | 606.10 |
| 102 | 1090702.88 | 1068786.52 | 607.14 |
| 103 | 1090702.88 | 1068786.91 | 607.14 |
| 104 | 1090702.88 | 1068787.30 | 603.08 |
| 105 | 1090702.88 | 1068787.69 | 606.84 |
| 106 | 1090702.88 | 1068788.08 | 609.94 |
| 107 | 1090702.88 | 1068788.47 | 610.38 |
| 108 | 1090702.88 | 1068788.86 | 610.14 |
| 109 | 1090702.88 | 1068789.25 | 610.14 |
| 110 | 1090922.57 | 1068604.56 | 609.12 |
| 111 | 1090922.57 | 1068605.05 | 609.50 |
| 112 | 1090922.57 | 1068605.54 | 609.50 |
| 113 | 1090922.57 | 1068606.03 | 609.48 |
| 114 | 1090922.57 | 1068606.52 | 609.23 |
| 115 | 1090922.57 | 1068607.01 | 608.47 |
| 116 | 1090922.57 | 1068607.50 | 608.47 |
| 117 | 1090922.57 | 1068607.99 | 608.47 |
| 118 | 1090922.57 | 1068608.48 | 608.47 |
| 119 | 1090922.57 | 1068608.97 | 608.47 |
| 120 | 1090922.57 | 1068609.46 | 608.47 |
| 121 | 1090922.57 | 1068609.95 | 609.50 |
| 122 | 1090922.57 | 1068610.44 | 608.47 |
| 123 | 1090922.57 | 1068610.93 | 608.47 |
| 124 | 1090922.57 | 1068611.42 | 608.47 |
| 125 | 1090922.57 | 1068611.91 | 609.23 |
| 126 | 1090922.57 | 1068612.40 | 608.47 |
| 127 | 1090922.57 | 1068612.89 | 608.47 |
| 128 | 1090922.57 | 1068613.38 | 608.47 |
| 129 | 1090922.57 | 1068613.87 | 608.47 |
| 130 | 1090922.57 | 1068614.36 | 608.47 |
| 131 | 1090922.57 | 1068614.85 | 608.47 |
| 132 | 1090922.57 | 1068615.34 | 608.47 |
| 133 | 1090922.57 | 1068615.83 | 608.47 |
| 134 | 1090922.57 | 1068616.32 | 608.47 |
| 135 | 1090922.57 | 1068616.81 | 608.47 |
| 136 | 1090922.57 | 1068617.30 | 608.47 |
| 137 | 1090922.57 | 1068617.79 | 608.47 |
| 138 | 1090922.57 | 1068618.28 | 608.47 |
| 139 | 1090922.57 | 1068618.77 | 608.47 |
| 140 | 1090922.57 | 1068619.26 | 608.47 |
| 141 | 1090922.57 | 1068619.75 | 608.47 |
| 142 | 1090922.57 | 1068620.24 | 608.47 |
| 143 | 1090922.57 | 1068620.73 | 608.47 |
| 144 | 1090922.57 | 1068621.22 | 607.97 |
| 145 | 1090922.57 | 1068621.71 | 607.97 |
| 146 | 1090922.57 | 1068622.20 | 608.47 |
| 147 | 1090922.57 | 1068622.69 | 608.47 |

ASBUILT SURVEY
175 MILENS ROAD
TOWN OF TONAWANDA
COUNTY OF ERIE STATE OF NEW YORK

DATE: JAN. 11, 2016
JOB NO. 15-2-10-6
SCALE: 1" = 30'

REV: 2/29/16, 3/16/16

Huss & Co. Inc.
Engineers and Surveyors
3556 Lake Shore Road
Buffalo, New York, 14219-1484
(716) 827-8000
www.hussco.com

SHEET NO. 1 OF 1

