

LEGEND:

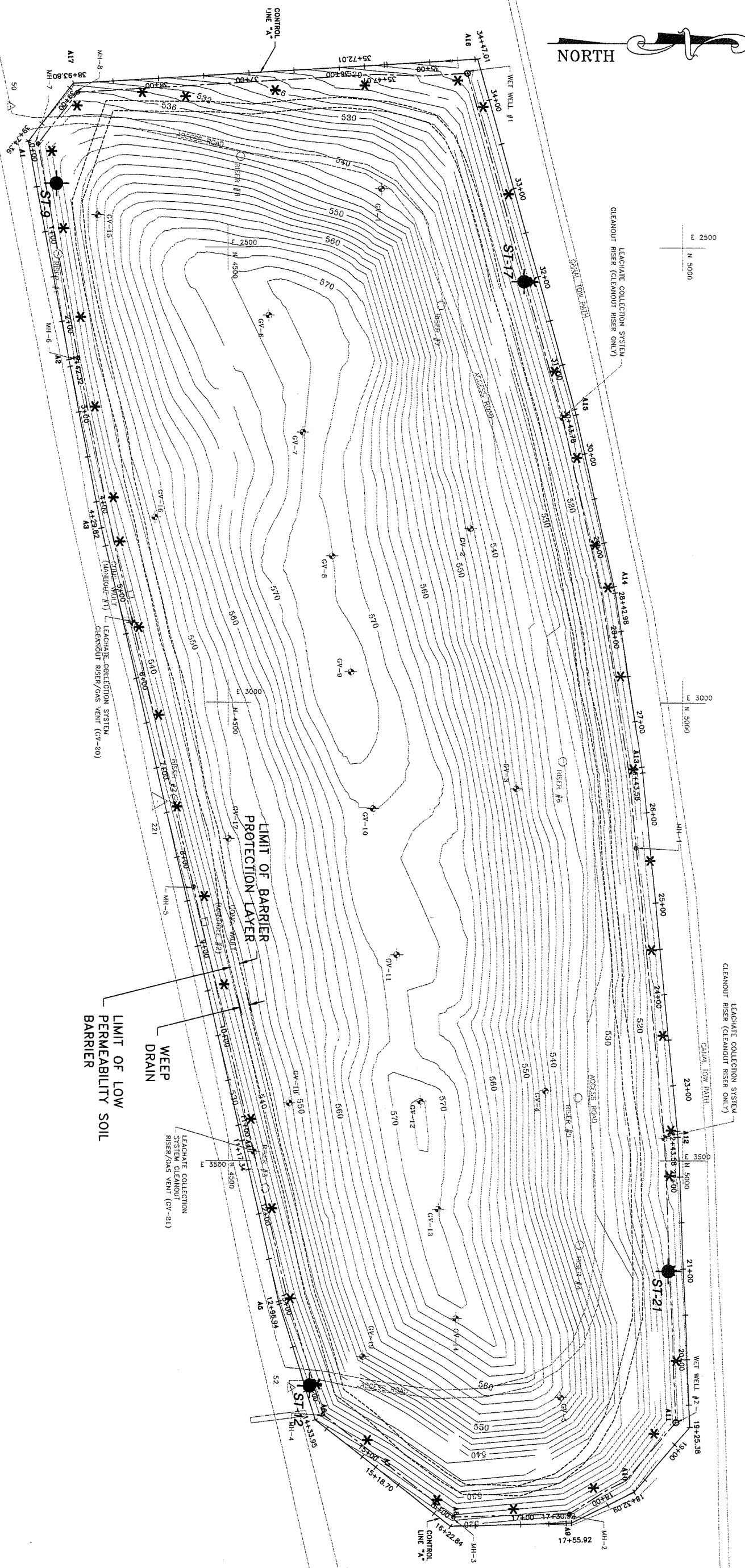
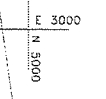
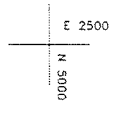
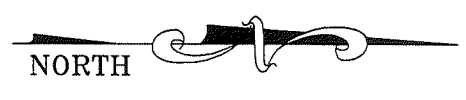
ST-1 THIN-WALLED SHELBY TUBE SAMPLE LOCATION

NOTES:

1. SHELBY TUBE AND DENSITY TEST LOCATIONS WERE REFERENCED BY GZA TO SITE SURVEY CONTROL ESTABLISHED BY TVGA, PLS., P.C.
2. ELEVATIONS SHOWN IN LANDFILL FOOTPRINT AREA REPRESENT TOP OF DESIGN FINAL GRADE.

SHELBY TUBE LOCATIONS			
SHELBY TUBE No.	PERMEABILITY (cm/sec.)	TEST DRY DENSITY (pcf)	TEST MOISTURE CONTENT (%)
ST-1	3.1E-08	102.9	21.4
ST-2	1.1E-08	102.3	23.6
ST-3	8.9E-09	104.2	22.8
ST-4	4.7E-08	97.7	24.9
ST-5	2.1E-08	96.0	19.5
ST-6	1.3E-08	102.0	23.6
ST-7	8.5E-09	99.6	24.4
ST-8	1.2E-08	98.9	26.5

WASTE MANAGEMENT OF NEW YORK, LLC McKENNA LANDFILL REMEDIATION CLOSURE PROJECT ALBION, NEW YORK	REV No.	DESCRIPTION	BY	DATE
CLAY BARRIER WALL SHELBY TUBE LOCATIONS	SCALE IN FEET		DRAWN BY: DEW	
	30 60 120 240		DATE: DECEMBER 2001	
PROJECT No. 55024		GZA GZA GeoEnvironmental of New York		
FIGURE No. 2				



LEGEND:

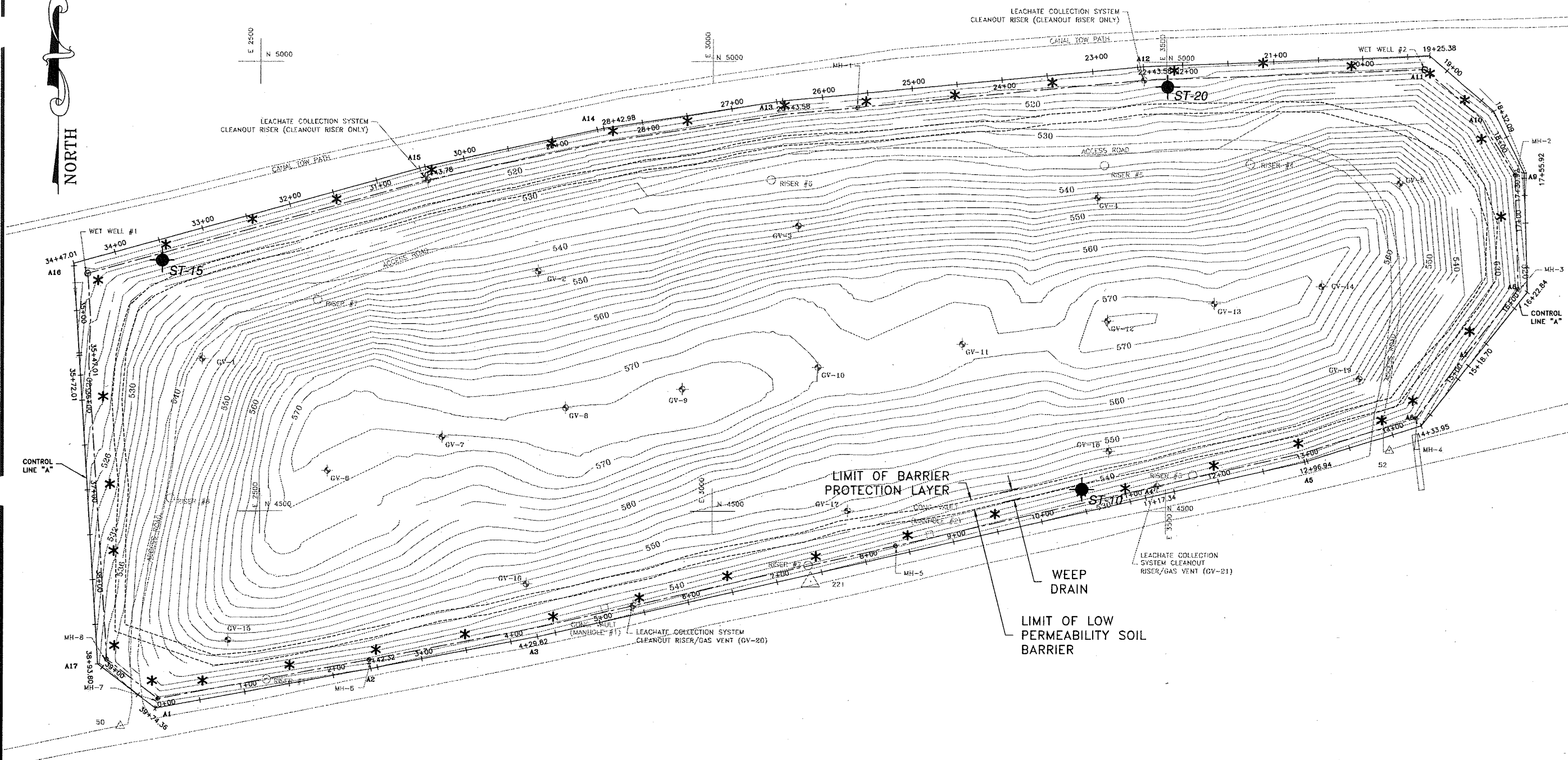
- * IN-PLACE MOISTURE/DENSITY TEST LOCATION
- ST- THIN-WALLED SHELBY TUBE SAMPLE LOCATION

NOTES:

1. SHELBY TUBE AND DENSITY TEST LOCATIONS WERE REFERENCED BY GZA TO SITE SURVEY CONTROL ESTABLISHED BY TVGA, PLS., P.C.
2. ELEVATIONS SHOWN IN LANDFILL FOOTPRINT AREA REPRESENT TOP OF DESIGN FINAL GRADE.

SHELBY TUBE LOCATIONS			
SHELBY TUBE No.	PERMEABILITY (cm/sec.)	TEST DRY DENSITY (pcf)	TEST MOISTURE CONTENT (%)
ST-9	1.4E-08	97.8	26.3
ST-12	2.1E-08	99.1	24.8
ST-17	1.5E-08	95.7	27.3
ST-21	9.6E-08	99.6	24.4

<p>WASTE MANAGEMENT OF NEW YORK, LLC McKENNA LANDFILL REMEDIATION CLOSURE PROJECT ALBION, NEW YORK</p> <p style="text-align: center;">LOW PERMEABILITY SOIL LAYER SHELBY TUBE AND DENSITY TEST LOCATIONS - FIRST LIFT</p>	<p>REV No. _____</p> <p style="text-align: center;">SCALE IN FEET</p>	<p>DESCRIPTION _____</p>	<p>BY _____</p> <p>DATE: DECEMBER 2001</p>
<p>PROJECT No. 55024</p> <p>FIGURE No. 3</p>			



LEGEND:

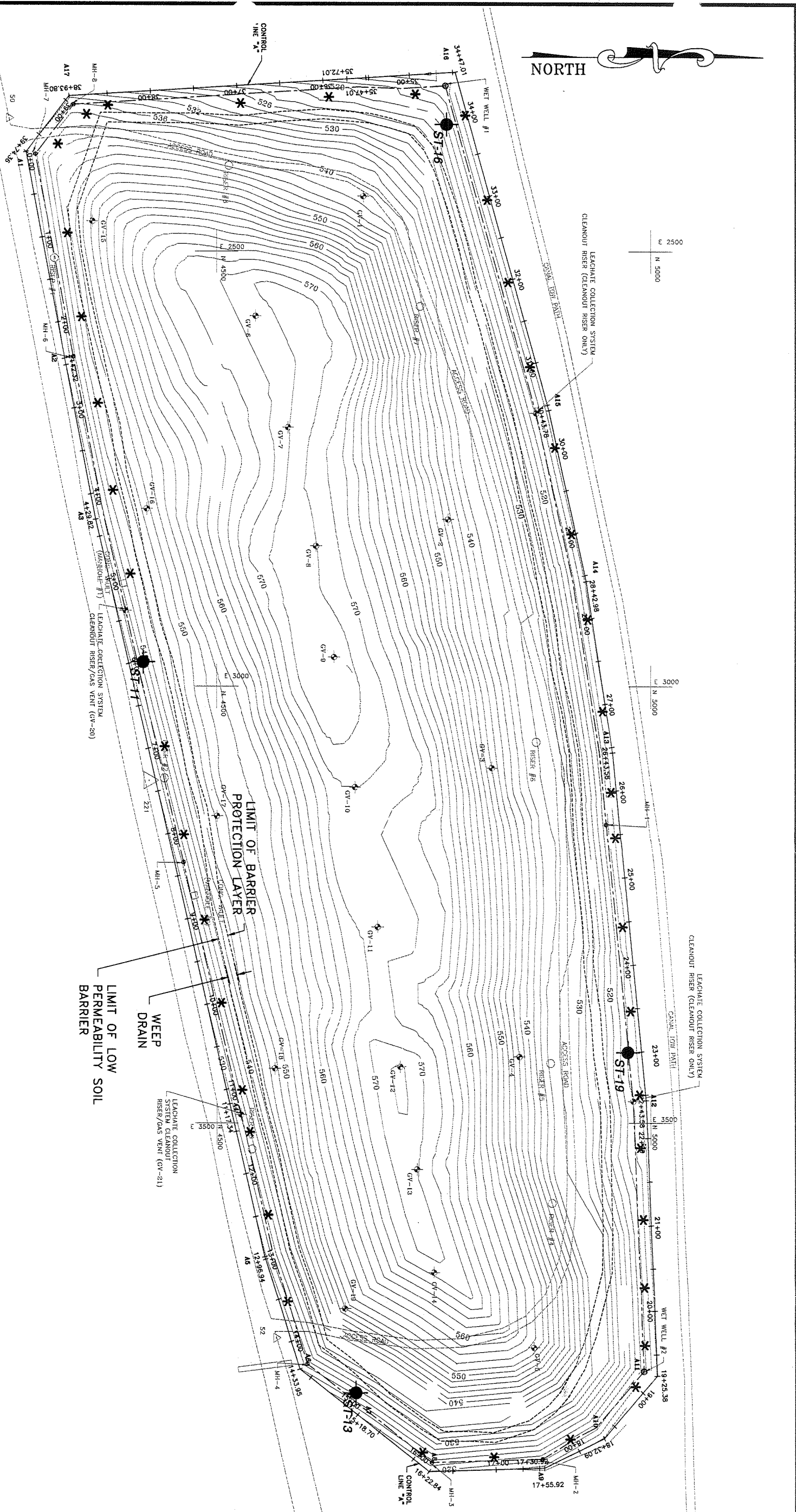
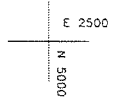
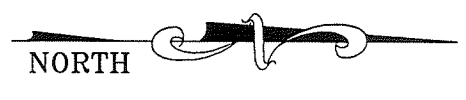
- * IN-PLACE MOISTURE/DENSITY TEST LOCATION
- ST- THIN-WALLED SHELBY TUBE SAMPLE LOCATION

NOTES:

1. SHELBY TUBE AND DENSITY TEST LOCATIONS WERE REFERENCED BY GZA TO SITE SURVEY CONTROL ESTABLISHED BY TVGA, PLS., P.C.
2. ELEVATIONS SHOWN IN LANDFILL FOOTPRINT AREA REPRESENT TOP OF DESIGN FINAL GRADE.

SHELBY TUBE LOCATIONS			
SHELBY TUBE No.	PERMEABILITY (cm/sec.)	TEST DRY DENSITY (pcf)	TEST MOISTURURE CONTENT (%)
ST-10	8.3E-09	107.0	20.5
ST-15	1.2E-08	101.4	22.6
ST-20	2.3E-08	98.2	25.4

REV No.	DESCRIPTION	BY	DATE	
		DRAWN BY: DEW	DATE: DECEMBER 2001	
WASTE MANAGEMENT OF NEW YORK, LLC McKENNA LANDFILL REMEDIATION CLOSURE PROJECT ALBION, NEW YORK		SCALE IN FEET 30 60 120 240		
LOW PERMEABILITY SOIL LAYER SHELBY TUBE AND DENSITY TEST LOCATIONS - SECOND LIFT				
PROJECT No. 55024		FIGURE No. 4		



LEGEND:

- * IN-PLACE MOISTURE/DENSITY TEST LOCATION
- ST- THIN-WALLED SHELBY TUBE SAMPLE LOCATION

NOTES:

1. SHELBY TUBE AND DENSITY TEST LOCATIONS WERE REFERENCED BY GZA TO SITE SURVEY CONTROL ESTABLISHED BY TVGA, PLS., P.C.
2. ELEVATIONS SHOWN IN LANDFILL FOOTPRINT AREA REPRESENT TOP OF DESIGN FINAL GRADE.

SHELBY TUBE LOCATIONS

SHELBY TUBE No.	PERMEABILITY (cm/sec.)	TEST DRY DENSITY (pcf)	TEST MOISTURE CONTENT (%)
ST-11	1.7E-09	99.9	25.9
ST-13	1.4E-08	92.7	29.3
ST-16	1.2E-08	97.9	25.2
ST-19	1.5E-08	93.0	30.7

REV No.	DESCRIPTION	BY	DATE
		DRAWN BY: DEW	DATE: DECEMBER 2001

SCALE IN FEET

GZA GeoEnvironmental of New York

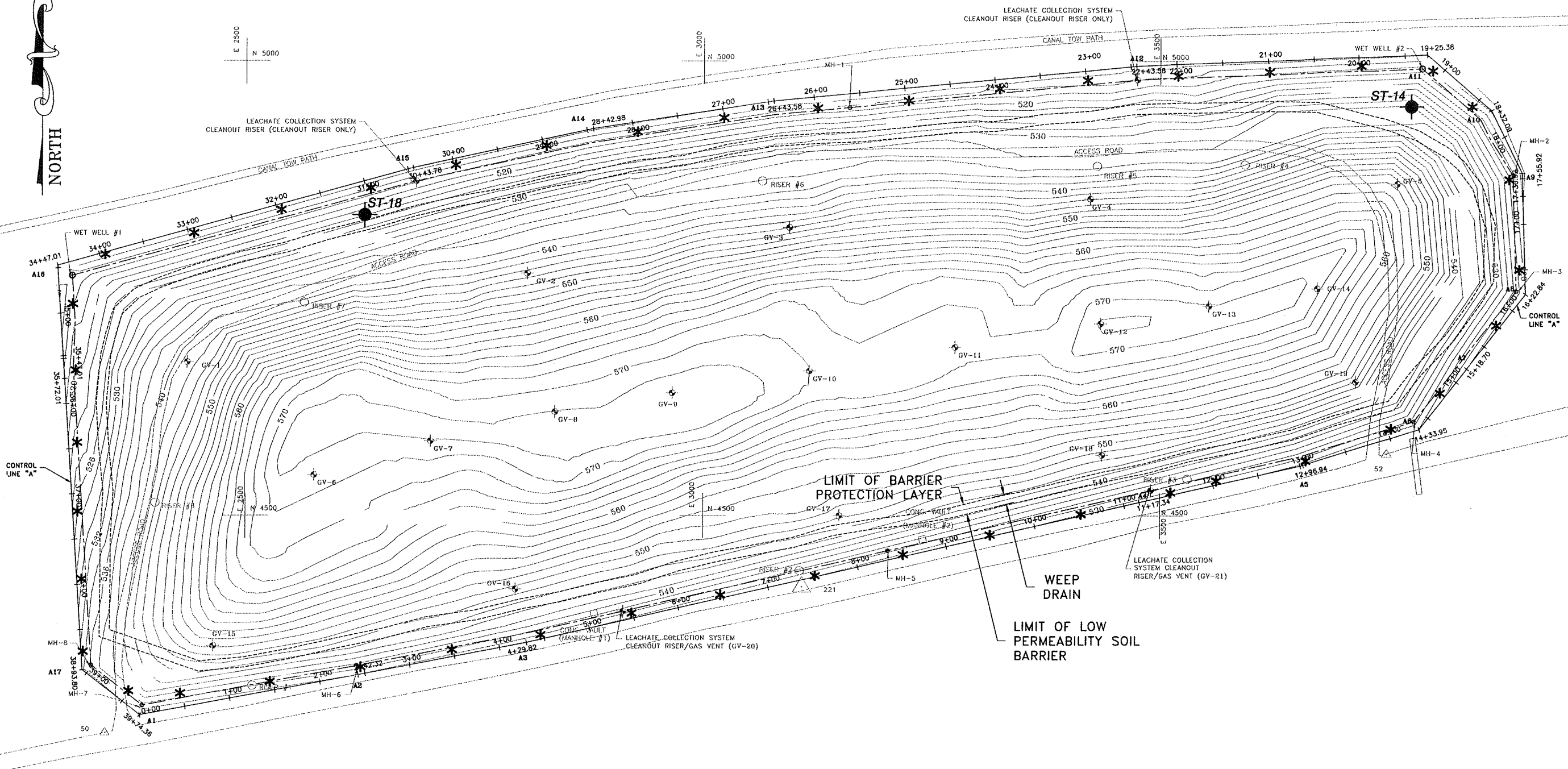
WASTE MANAGEMENT OF NEW YORK, LLC
McKENNA LANDFILL REMEDIATION CLOSURE PROJECT
ALBION, NEW YORK
LOW PERMEABILITY SOIL LAYER
SHELBY TUBE AND DENSITY TEST LOCATIONS - THIRD LIFT

PROJECT No. 55024
 FIGURE No. 5



E 2500
N 5000

E 3000
N 5000



LEGEND:

- * IN-PLACE MOISTURE/DENSITY TEST LOCATION
- ST- THIN-WALLED SHELBY TUBE SAMPLE LOCATION

NOTES:

1. SHELBY TUBE AND DENSITY TEST LOCATIONS WERE REFERENCED BY GZA TO SITE SURVEY CONTROL ESTABLISHED BY TVGA, PLS., P.C.
2. ELEVATIONS SHOWN IN LANDFILL FOOTPRINT AREA REPRESENT TOP OF DESIGN FINAL GRADE.

SHELBY TUBE LOCATIONS			
SHELBY TUBE No.	PERMEABILITY (cm/sec.)	TEST DRY DENSITY (pcf)	TEST MOISTURE CONTENT (%)
ST-14	9.3E-09	91.9	30.4
ST-18	1.4E-08	93.1	31.0

WASTE MANAGEMENT OF NEW YORK, LLC
McKENNA LANDFILL REMEDIATION CLOSURE PROJECT
ALBION, NEW YORK

LOW PERMEABILITY
SOIL LAYER
SHELBY TUBE AND DENSITY
TEST LOCATIONS - FOURTH LIFT

PROJECT No.
55024

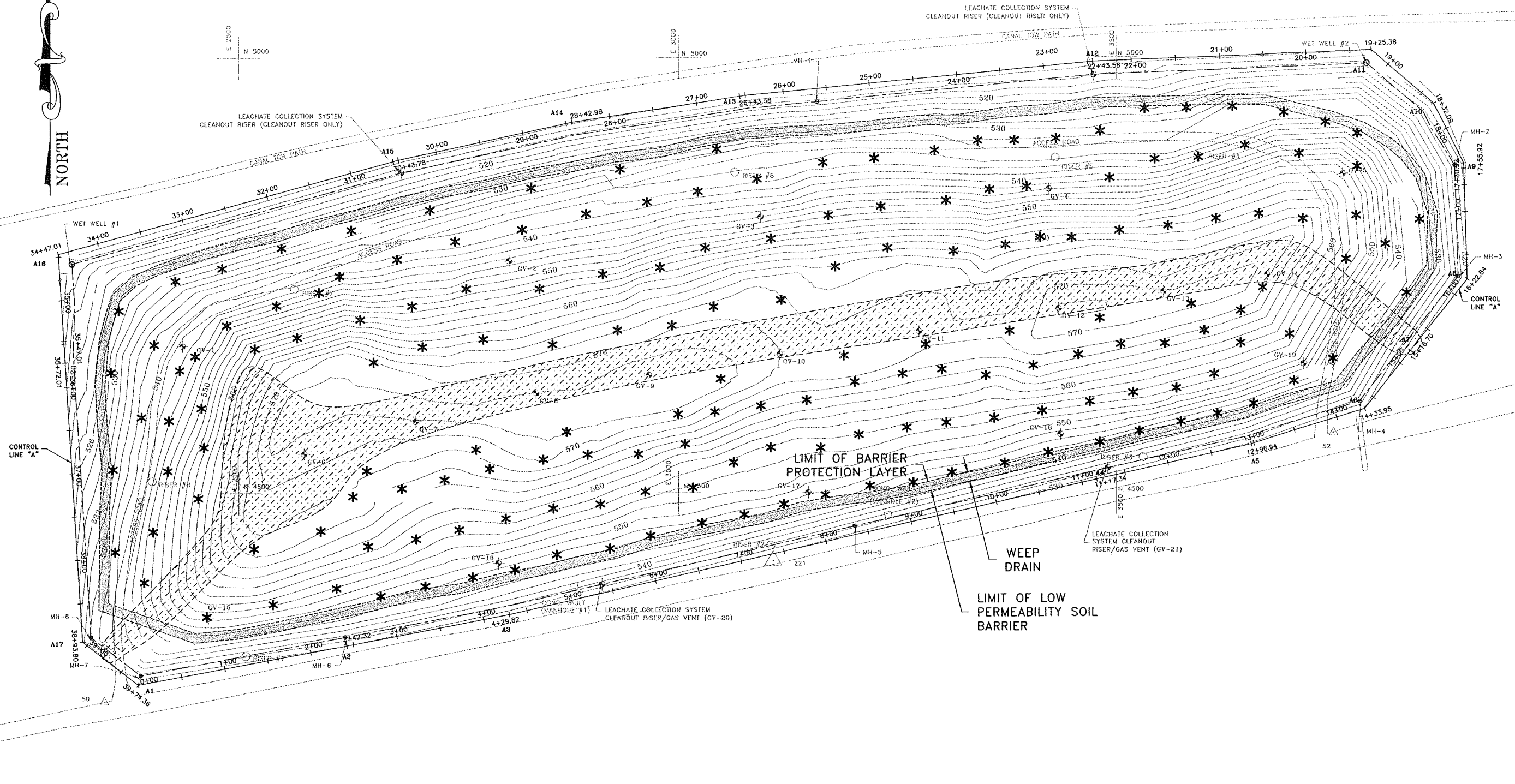
FIGURE No.

REV No. DESCRIPTION

BY DATE
DRAWN BY: DEW

DATE: DECEMBER 2001





LEGEND:

* IN-PLACE MOISTURE/DENSITY TEST LOCATION

 AREA OF ACCESS ROAD CONSTRUCTED FOR BARRIER PROTECTION MATERIAL PLACEMENT. MATERIAL PLACED IN ONE UNIFORM 2-FOOT THICK LIFT, WELL COMPACTED BY ROLLERS AND TRUCK TRAVEL.

NOTES:

1. DENSITY TEST LOCATIONS WERE REFERENCED BY GZA TO SITE SURVEY CONTROL ESTABLISHED BY TVGA, PLS., P.C.
2. ELEVATIONS SHOWN IN LANDFILL FOOTPRINT AREA REPRESENT TOP OF DESIGN FINAL GRADE.

DESCRIPTION

REV. No.

WASTE MANAGEMENT OF NEW YORK, LLC
MCKENNA LANDFILL REMEDIATION CLOSURE PROJECT
ALBION, NEW YORK

PROJECT No.
55024

FIGURE No.
7

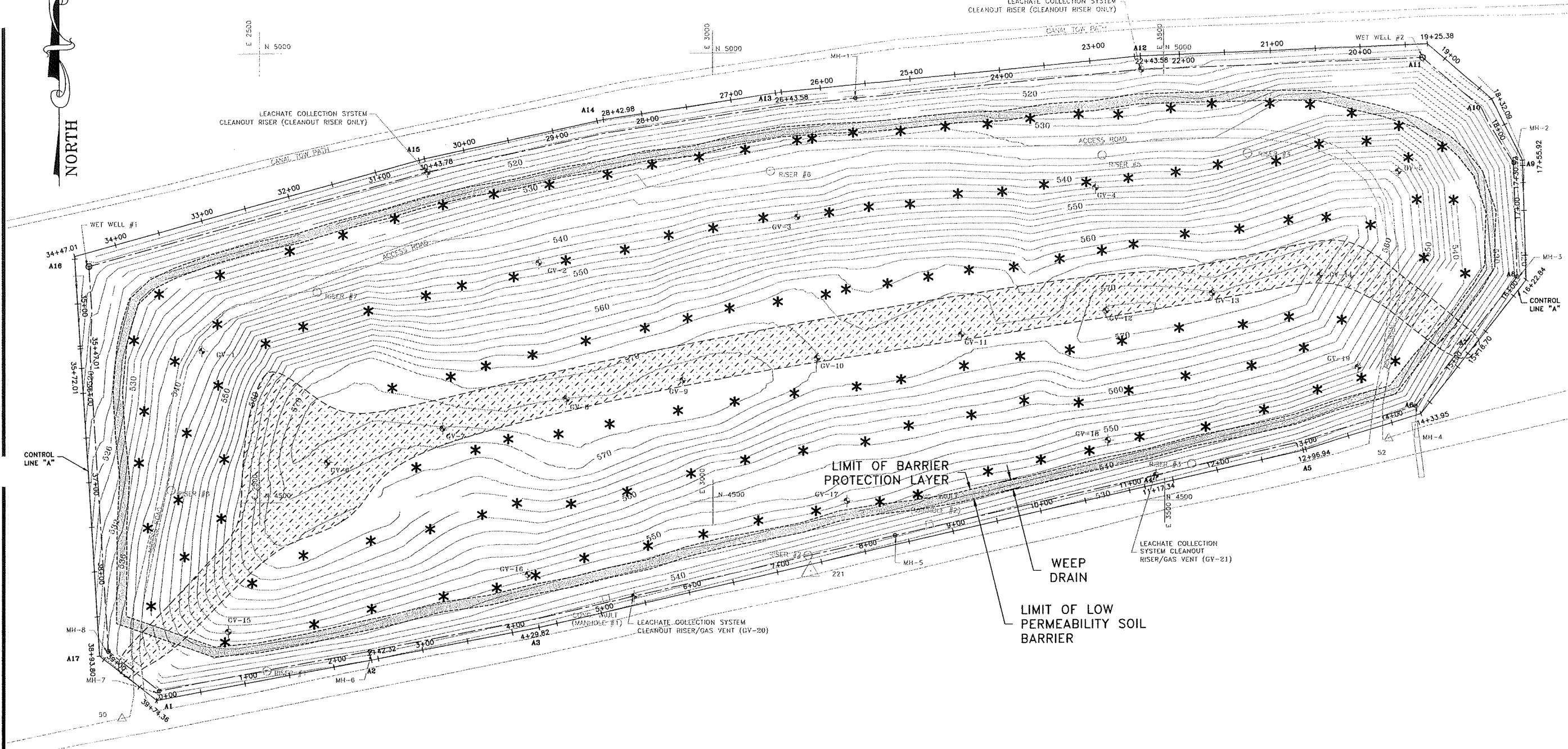
DRAWN BY: DEW
DATE: DECEMBER 2001

SCALE IN FEET



GZA GeoEnvironmental of New York

BARRIER PROTECTION MATERIAL
DENSITY TEST LOCATIONS -
FIRST LIFT




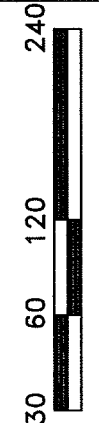
LEGEND:

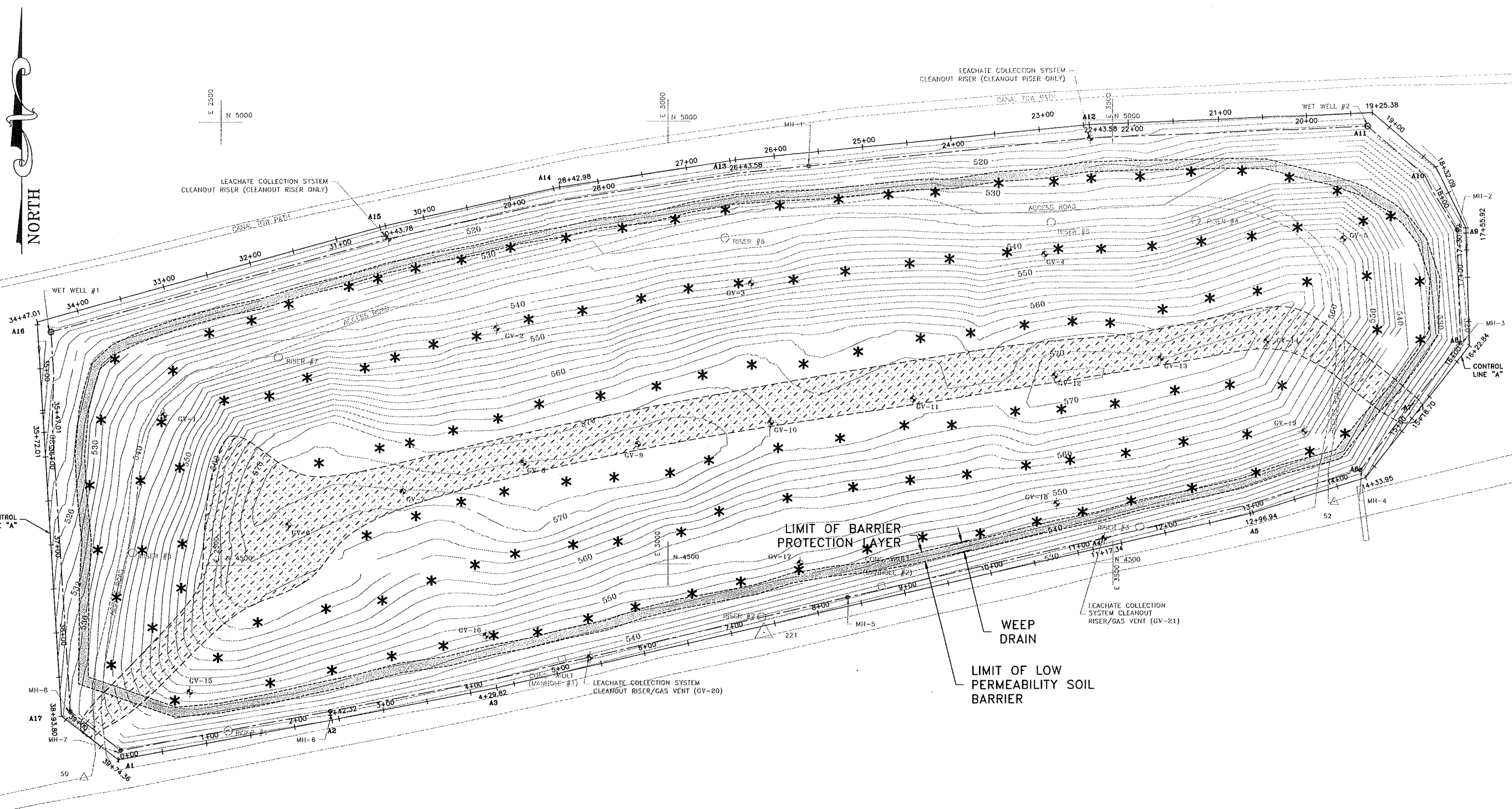
* IN-PLACE MOISTURE/DENSITY TEST LOCATION

 AREA OF ACCESS ROAD CONSTRUCTED FOR BARRIER PROTECTION MATERIAL PLACEMENT. MATERIAL PLACED IN ONE UNIFORM 2-FOOT THICK LIFT, WELL COMPACTED BY ROLLERS AND TRUCK TRAVEL.

NOTES:

1. DENSITY TEST LOCATIONS WERE REFERENCED BY GZA TO SITE SURVEY CONTROL ESTABLISHED BY TVGA, PLS., P.C.
2. ELEVATIONS SHOWN IN LANDFILL FOOTPRINT AREA REPRESENT TOP OF DESIGN FINAL GRADE.

WASTE MANAGEMENT OF NEW YORK, LLC MCKENNA LANDFILL REMEDIATION CLOSURE PROJECT ALBION, NEW YORK		PROJECT No. 55024
BARRIER PROTECTION MATERIAL DENSITY TEST LOCATIONS - SECOND LIFT		FIGURE No. 8
REV. No.	DESCRIPTION	DRAWN BY: DEW DATE: DECEMBER 2001
 GZA GeoEnvironmental of New York		SCALE IN FEET 



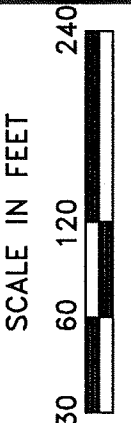
LEGEND:

* IN-PLACE MOISTURE/DENSITY TEST LOCATION

 AREA OF ACCESS ROAD CONSTRUCTED FOR BARRIER PROTECTION MATERIAL PLACEMENT. MATERIAL PLACED IN ONE UNIFORM 2-FOOT THICK LIFT, WELL COMPACTED BY ROLLERS AND TRUCK TRAVEL.

NOTES:

1. DENSITY TEST LOCATIONS WERE REFERENCED BY GZA TO SITE SURVEY CONTROL ESTABLISHED BY TVGA, PLS., P.C.
2. ELEVATIONS SHOWN IN LANDFILL FOOTPRINT AREA REPRESENT TOP OF DESIGN FINAL GRADE.

<p>WASTE MANAGEMENT OF NEW YORK, LLC MCKENNA LANDFILL REMEDIATION CLOSURE PROJECT ALBION, NEW YORK</p>		<p>PROJECT No. 55024</p>
<p>BARRIER PROTECTION MATERIAL DENSITY TEST LOCATIONS - THIRD LIFT</p>		<p>FIGURE No. 9</p>
<p>REV No.</p>	<p>DESCRIPTION</p>	<p>SCALE IN FEET </p>
<p>DRAWN BY: DEW</p>	<p>DATE: DECEMBER 2001</p>	<p>BY DATE</p>
<p>GZA GeoEnvironmental of New York</p>		