

# EMPIRE GEO SERVICES, INC.

A SUBSIDIARY OF SJB SERVICES, INC.

August 6, 2013

Mr. Jason Pelton  
Project Manager  
New York State Department of Environmental Conservation  
Division of Environmental Remediation  
12<sup>th</sup> Floor, 625 Broadway  
Albany, New York 12233

**Subject: Floor Drain Closure  
Barthelmes Manufacturing  
15 Cairn Street  
Rochester, New York 14611  
Site No. 828122**

Dear Mr. Pelton:

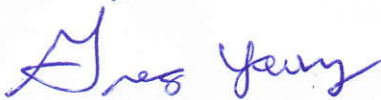
Empire Geo-Services, Inc. (Empire) has prepared this letter report to document the closure of two floor drains at the above-referenced facility. The closures were performed by NYSDEC and Empire personnel on July 31, 2013. Photographs documenting the closure activities are attached.

The first closure was performed on a rectangular drain located adjacent to the tumbler. Prior to closing the drain, the accumulated sediment was removed. A two-inch-diameter water-proof plug was then installed in the drain pipe. The drain was filled to grade with cement prepared using 4,000 pound per square inch (psi) concrete mix and an appropriate volume of water.

The second closure was performed on a trench drain in the loading dock area. Prior to closing the drain, the accumulated sediment was removed. A two-inch-diameter water-proof plug was then installed in the drain pipe. The trench was filled with cement to just below grade above and immediately adjacent to the drain pipe. The remainder of the trench was filled with cement to a depth of approximately 2- to 3-inches.

We hope this information meets your needs. If you have any questions, please call me at (585) 359-2730.

Sincerely,



Gregory Young  
Project Manager

Attachment

**CORPORATE/  
BUFFALO OFFICE**

5167 South Park Avenue  
Hamburg, NY 14075  
Phone: (716) 649-8110  
Fax: (716) 649-8051

**ALBANY OFFICE**

PO Box 2199  
Ballston Spa, NY 12020

5 Khabner Road  
Mechanicville, NY 12118  
Phone: (518) 899-7491  
Fax: (518) 899-7496

**CORTLAND OFFICE**

60 Miller Street  
Cortland, NY 13045  
Phone: (607) 758-7182  
Fax: (607) 758-7188

**ROCHESTER OFFICE**

535 Summit Point Drive  
Henrietta, NY 14467  
Phone: (585) 359-2730  
Fax: (585) 359-9668

MEMBER

**ACEC New York**

American Council of Engineering Companies of New York

**ATTACHMENT**  
**Photographs**



July 31, 2013 – Barthelmes Manufacturing: Closure of floor drains that discharge to the on-site stormwater basin located on east side of property.



2-inch Steel Pipe at  
Base of Floor Drain  
Near Tumbler

07/31/2013 08:20

July 31, 2013 – Barthelmes Manufacturing: Closure of floor drains that discharge to the on-site stormwater basin located on east side of property.



July 31, 2013 – Barthelmes Manufacturing: Closure of floor drains that discharge to the on-site stormwater basin located on west side of property.



July 31, 2013 – Barthelmes Manufacturing: Closure of floor drains that discharge to the on-site stormwater basin located on west side of property.



July 31, 2013 – Barthelmes Manufacturing: Closure of floor drains that discharge to the on-site stormwater basin located on west side of property. Plug placed in 2-inch drain pipe prior to cementing in-place.



July 31, 2013 – Barthelmes Manufacturing: Closure of floor drains that discharge to the on-site stormwater basin located on west side of property. Plug placed in 2-inch drain pipe prior to cementing in-place.





July 31, 2013 – Barthelmes Manufacturing: Closure of floor drains that discharge to the on-site stormwater basin located on west side of property. Plug placed in 2-inch drain pipe prior to cementing in-place.



July 31, 2013 – Barthelmes Manufacturing: Closure of floor drains that discharge to the on-site stormwater basin located on west side of property. Plug placed in 2-inch drain pipe prior to cementing in-place.



Floor Drain Near Tumbler  
– Cement being added.

July 31, 2013 – Barthelmes Manufacturing: Closure of floor drains that discharge to the on-site stormwater basin located on west side of property. Cement being added to drain.



July 31, 2013 – Barthelmes Manufacturing: Closure of floor drains that discharge to the on-site stormwater basin located on west side of property. Cement being added to drain.



July 31, 2013 – Barthelmes Manufacturing: Closure of floor drains that discharge to the on-site stormwater basin located on west side of property. Cement being added to drain.



July 31, 2013 – Barthelmes Manufacturing: Closure of floor drains that discharge to the on-site stormwater basin located on west side of property. Cement being added to drain.



July 31, 2013 – Barthelmes Manufacturing: Closure of floor drains that discharge to the on-site stormwater basin located on west side of property. Cement added to drain and brought to the level of the floor.



Floor Drain Near Tumbler – Cement added and brought up to level of floor and leveled with trowel.

July 31, 2013 – Barthelmes Manufacturing: Closure of floor drains that discharge to the on-site stormwater basin located on west side of property. Cement added to drain and brought to the level of the floor.






July 31, 2013 – Barthelmes Manufacturing: Closure of floor drains that discharge to the on-site stormwater basin located on west side of property. Cement added to drain and brought to the level of the floor.



July 31, 2013 – Barthelmes Manufacturing: Closure of floor drains that discharge to the on-site stormwater basin located on west side of property. Cement added to drain and brought to the level of the floor.



July 31, 2013 – Barthelmes Manufacturing: Closure of floor drains that discharge to the on-site stormwater basin located on west side of property. Image shows location of Trench Drain in loading dock area.



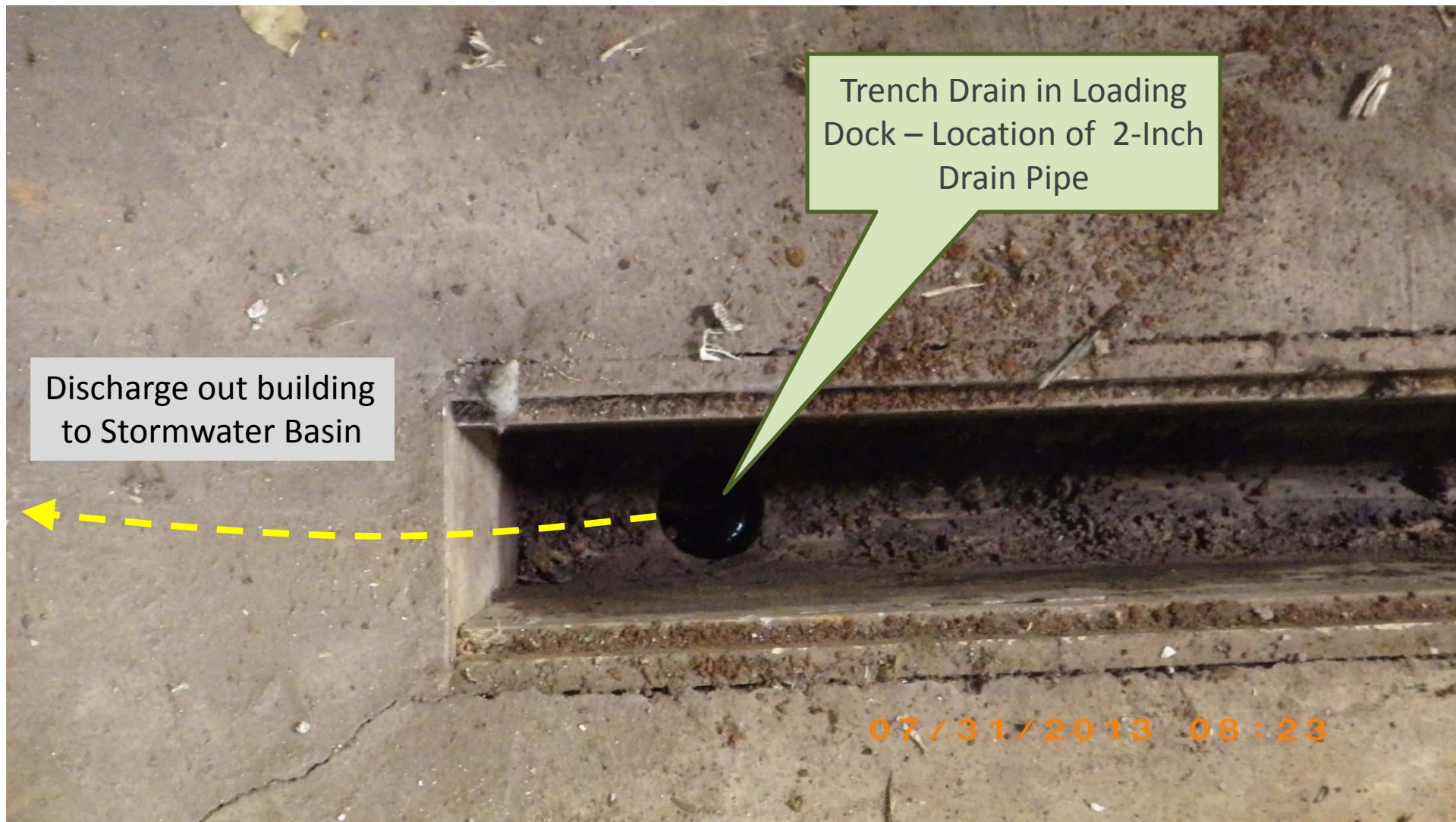
Trench Drain in  
Loading Dock

July 31, 2013 – Barthelmes Manufacturing: Closure of floor drains that discharge to the on-site stormwater basin located on west side of property. Image shows location of Trench Drain in loading dock area.

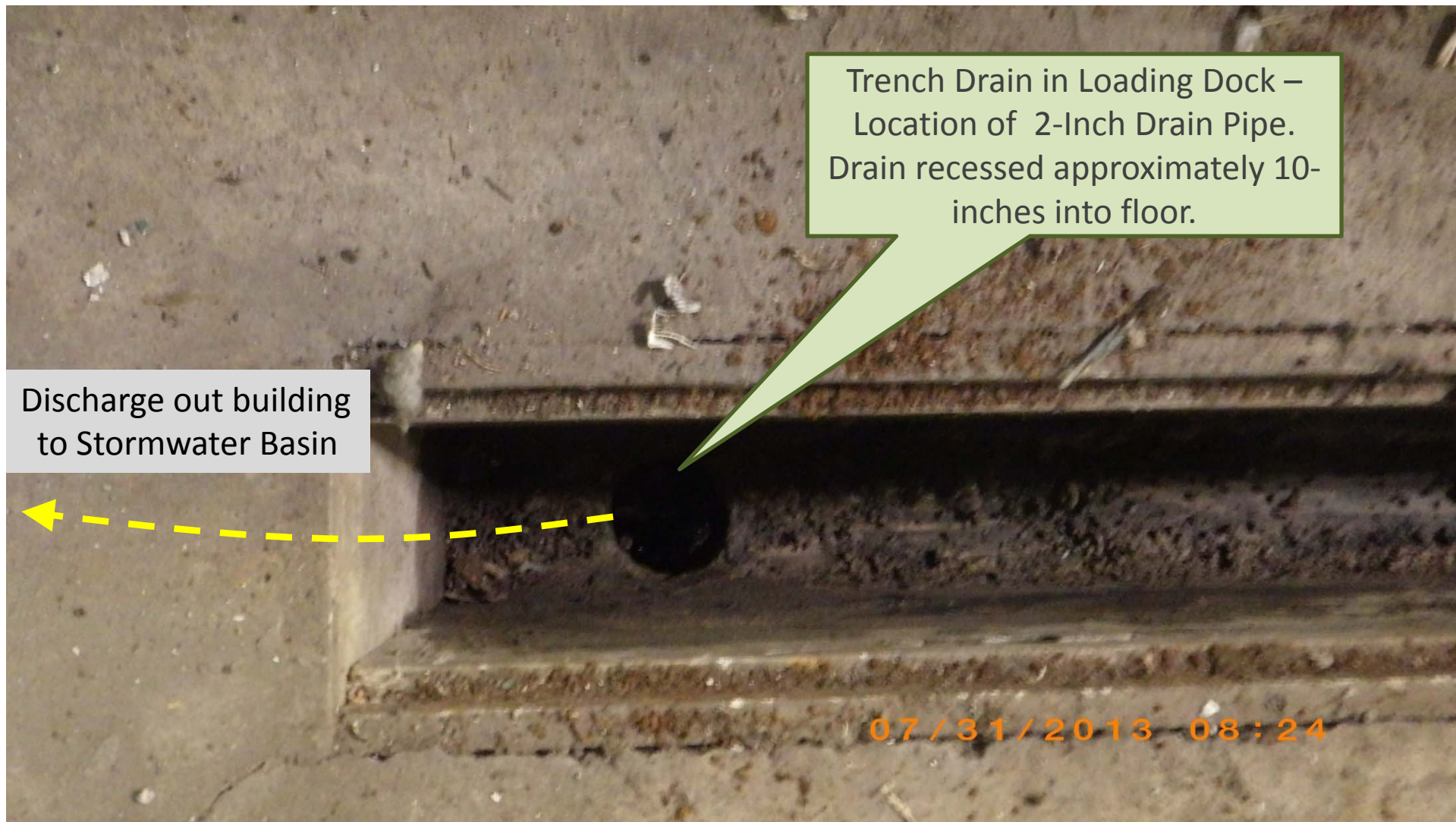


Trench Drain in Loading Dock – Location of 2-Inch Drain Pipe

July 31, 2013 – Barthelmes Manufacturing: Closure of floor drains that discharge to the on-site stormwater basin located on west side of property. Image shows location of Trench Drain in loading dock area.



July 31, 2013 – Barthelmes Manufacturing: Closure of floor drains that discharge to the on-site stormwater basin located on west side of property. Image shows location of Trench Drain in loading dock area.

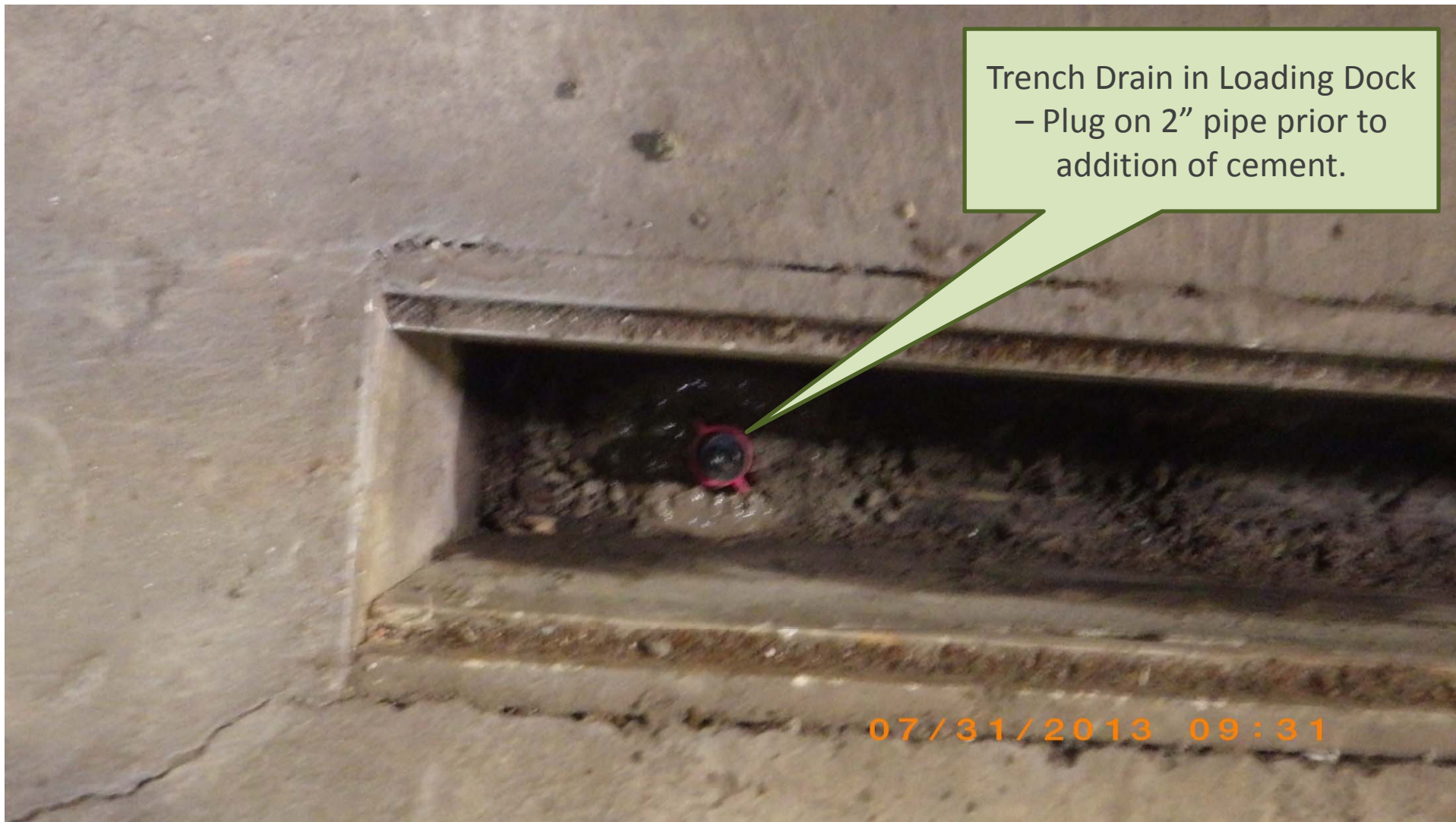


July 31, 2013 – Barthelmes Manufacturing: Closure of floor drains that discharge to the on-site stormwater basin located on west side of property. Image shows location of Trench Drain in loading dock area.



July 31, 2013 – Barthelmes Manufacturing: Closure of floor drains that discharge to the on-site stormwater basin located on west side of property. Image shows plug placed on 2” pipe prior to closure of Trench Drain in-place.





July 31, 2013 – Barthelmes Manufacturing: Closure of floor drains that discharge to the on-site stormwater basin located on west side of property. Image shows plug placed on 2" pipe prior to closure of Trench Drain in-place.



Trench Drain in Loading Dock  
– Cement added over drain to  
level floor.

July 31, 2013 – Barthelmes  
Manufacturing: Closure of  
floor drains that discharge to  
the on-site stormwater basin  
located on west side of  
property. Image shows  
cement added to Trench Drain  
as part of closure in-place.



July 31, 2013 – Barthelmes Manufacturing: Closure of floor drains that discharge to the on-site stormwater basin located on west side of property. Image shows cement added to Trench Drain as part of closure in-place.



July 31, 2013 – Barthelmes Manufacturing: Closure of floor drains that discharge to the on-site stormwater basin located on west side of property. Image shows cement added to Trench Drain as part of closure in-place.