



DUNN ENGINEERING COMPANY

DIVISION OF **RUST** ENVIRONMENT & INFRASTRUCTURE

PHOTOGRAPHS OF DERAILMENT

LEHIGH VALLEY RAILROAD DERAILMENT SITE
 NYS DEPARTMENT OF ENVIRONMENTAL CONSERVATION
 WORK ASSIGNMENT NO. D 002520-15

TOWN OF LEROY

GENESEE COUNTY, NY

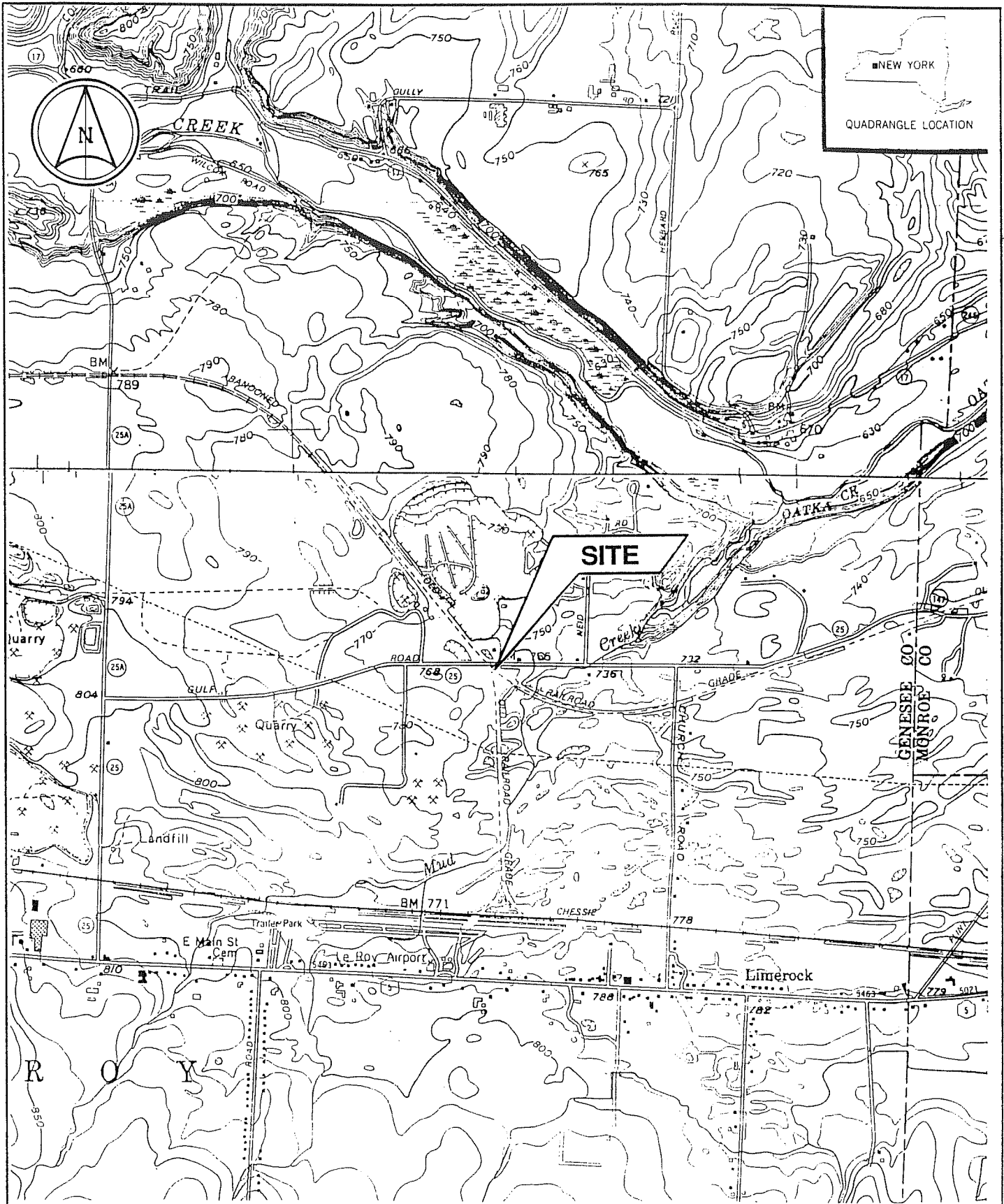
PROJECT No. 35090.400

DATE 11/94

DWG. No. 35090-09

SCALE NTS

FIGURE No. 1-1



DUNN ENGINEERING COMPANY

DIVISION OF **RUST** ENVIRONMENT & INFRASTRUCTURE

SITE LOCATION MAP

LEHIGH VALLEY RAILROAD DERAILMENT SITE
 NYS DEPARTMENT OF ENVIRONMENTAL CONSERVATION
 WORK ASSIGNMENT NO. D 002520-15

TOWN OF LEROY GENESEE CO. MONROE CO. NY

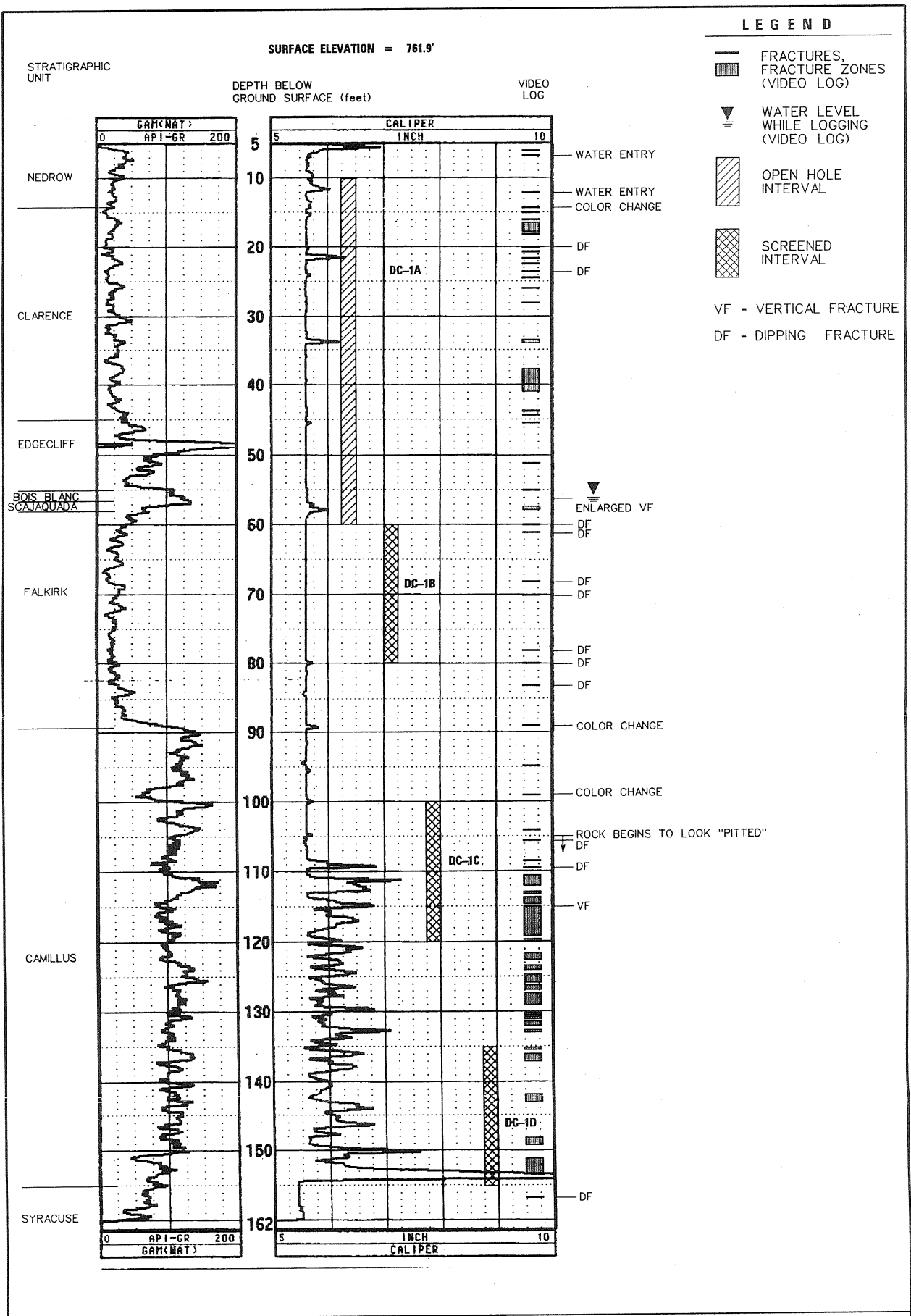
PROJECT No. 35090.400

DATE 11/94

DWG. No. 35090-07

SCALE 1"=2000'

FIGURE No. 1-2



LEGEND

- FRACTURES, FRACTURE ZONES (VIDEO LOG)
- ▨ OPEN HOLE INTERVAL
- ▼ WATER LEVEL WHILE LOGGING (VIDEO LOG)
- ▧ SCREENED INTERVAL
- VF - VERTICAL FRACTURE
- DF - DIPPING FRACTURE

DUNN ENGINEERING COMPANY

DIVISION OF **RUST** ENVIRONMENT & INFRASTRUCTURE

BOREHOLE GEOPHYSICAL and VIDEO LOGS
WELL CLUSTER DC-1

LEHIGH VALLEY RAILROAD DERAILMENT SITE

TOWN OF LEROY

GENESEE COUNTY, NY

PROJECT No. 35090.400

DATE 10/20/94

DWG. No. DC-1

SCALE AS SHOWN

FIGURE No. 2-1

SURFACE ELEVATION = 745.3

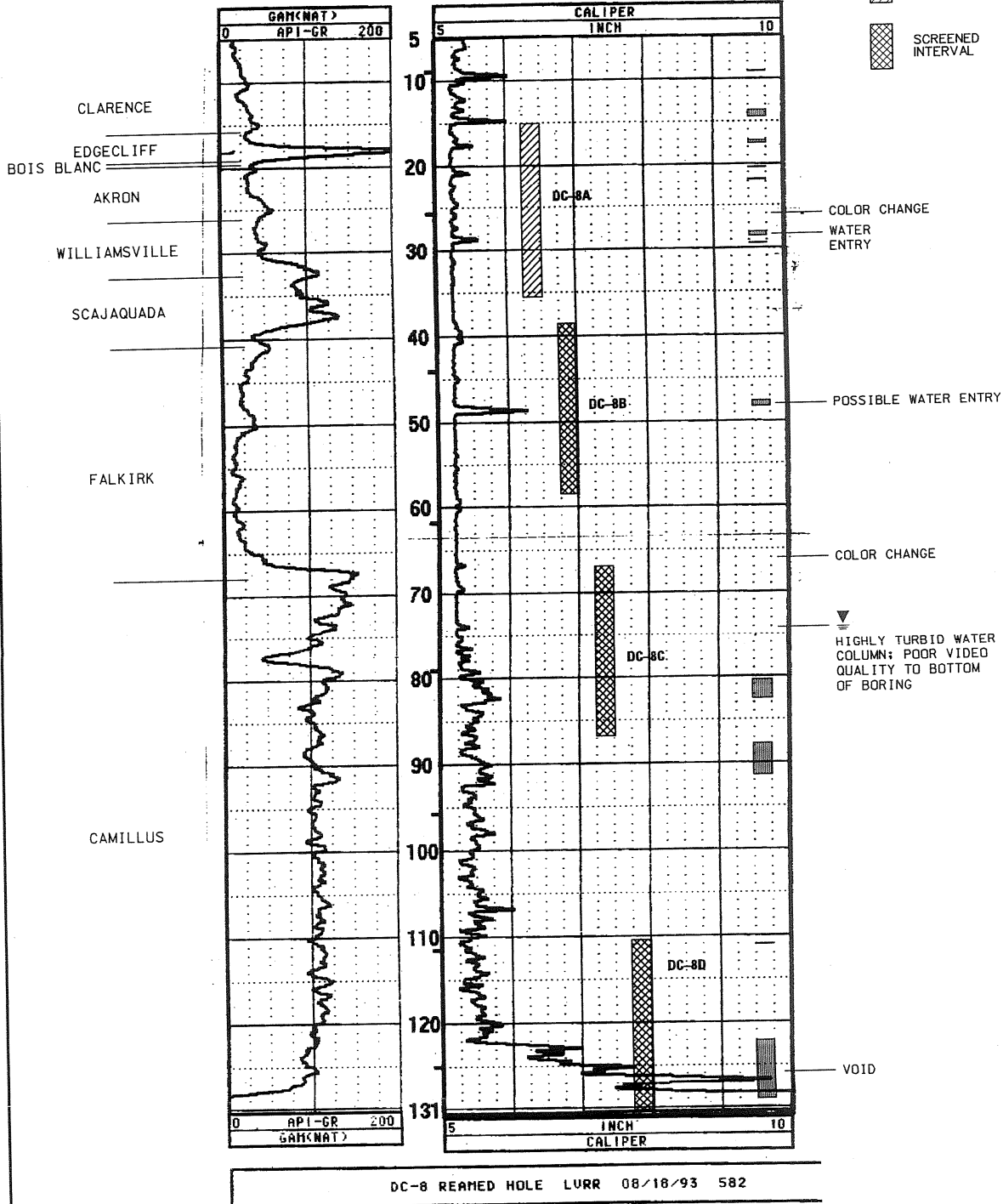
LEGEND

- FRACTURES, FRACTURE ZONES (VIDEO LOG)
- ▨ WATER LEVEL WHILE LOGGING (VIDEO LOG)
- ▨ OPEN HOLE INTERVAL
- ▨ SCREENED INTERVAL

STRATIGRAPHIC UNIT

DEPTH BELOW GROUND SURFACE (feet)

VIDEO LOG



DUNN ENGINEERING COMPANY

DIVISION OF **RUST** ENVIRONMENT & INFRASTRUCTURE

BOREHOLE GEOPHYSICAL and VIDEO LOGS
WELL CLUSTER DC-8

LEHIGH VALLEY RAILROAD DERAILMENT SITE

TOWN OF LEROY

GENESEEE COUNTY, NY

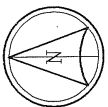
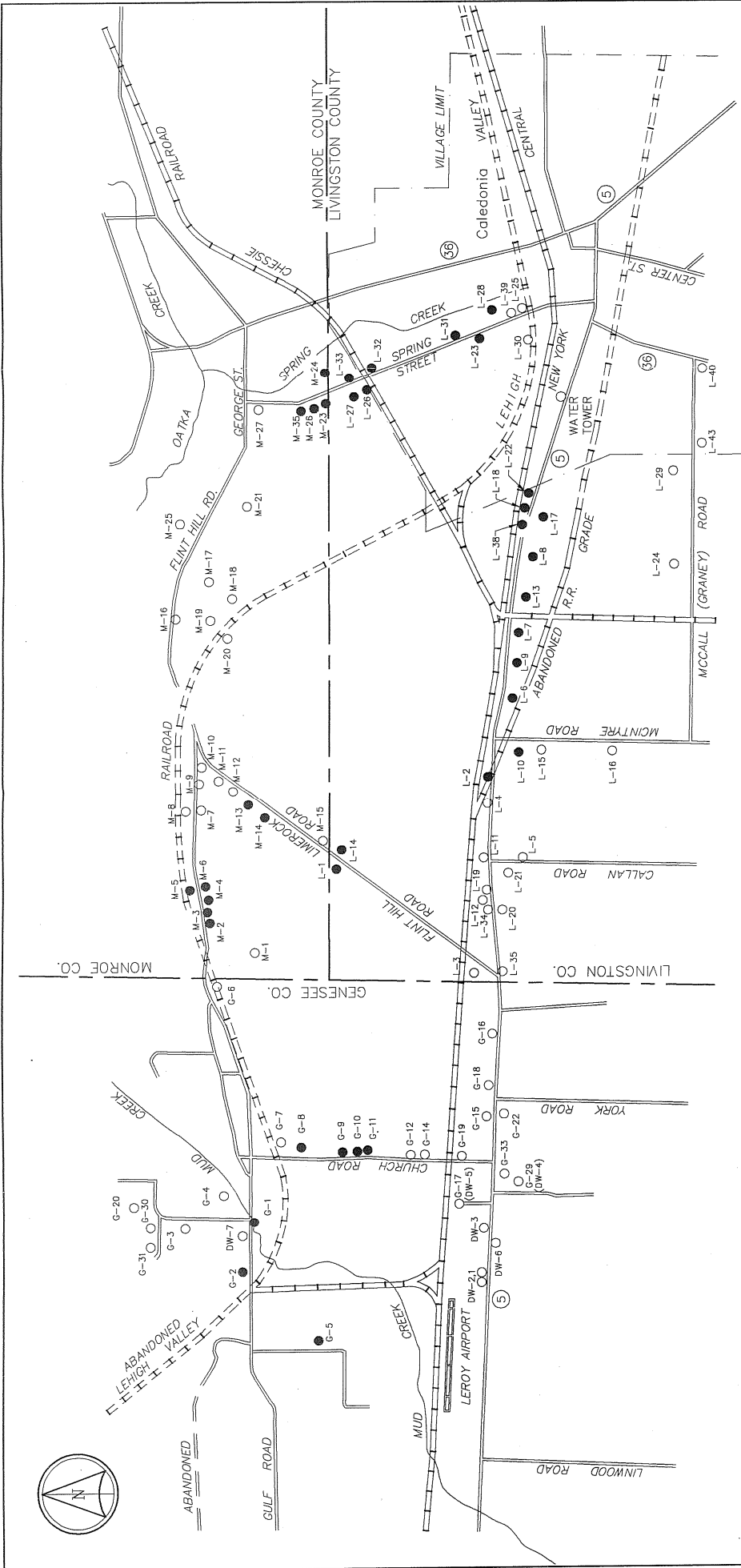
PROJECT No. 35090.400

DATE 10/20/94

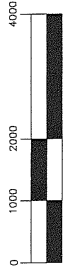
DWG. No. DC-8

SCALE AS SHOWN

FIGURE No. 2-2



GRAPHIC SCALE



(IN FEET)
1 inch = 2000ft.

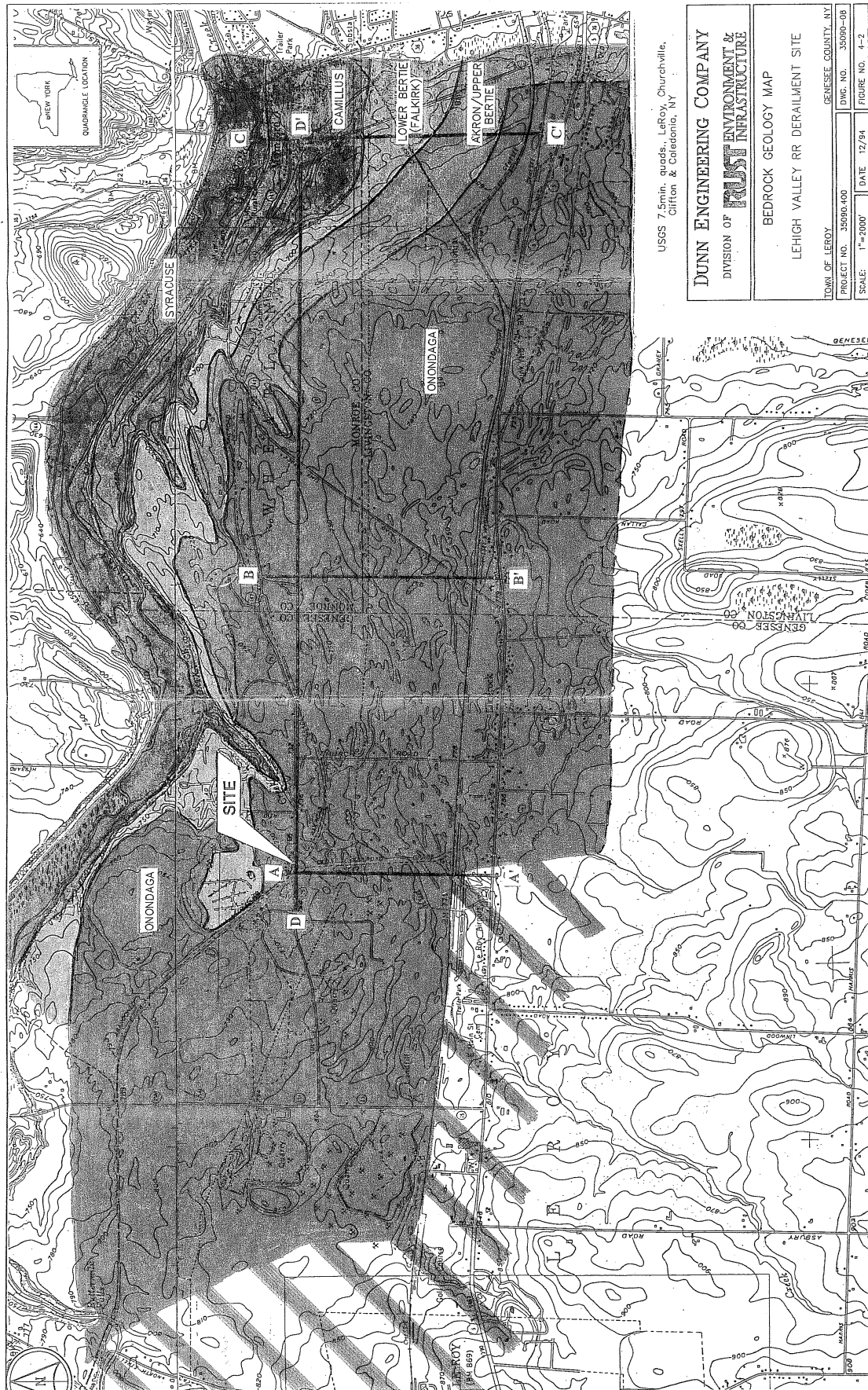
LEGEND:

- L-10 ● Contaminated domestic water supply well (≥ 5 ppb)
- L-16 ○ Domestic well not exhibiting levels in excess of MCLs
- DW-6 ○ Domestic well sampled in December 1992

DUNN ENGINEERING COMPANY
DIVISION OF **RUST** ENVIRONMENT & INFRASTRUCTURE

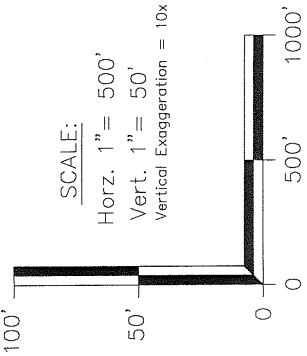
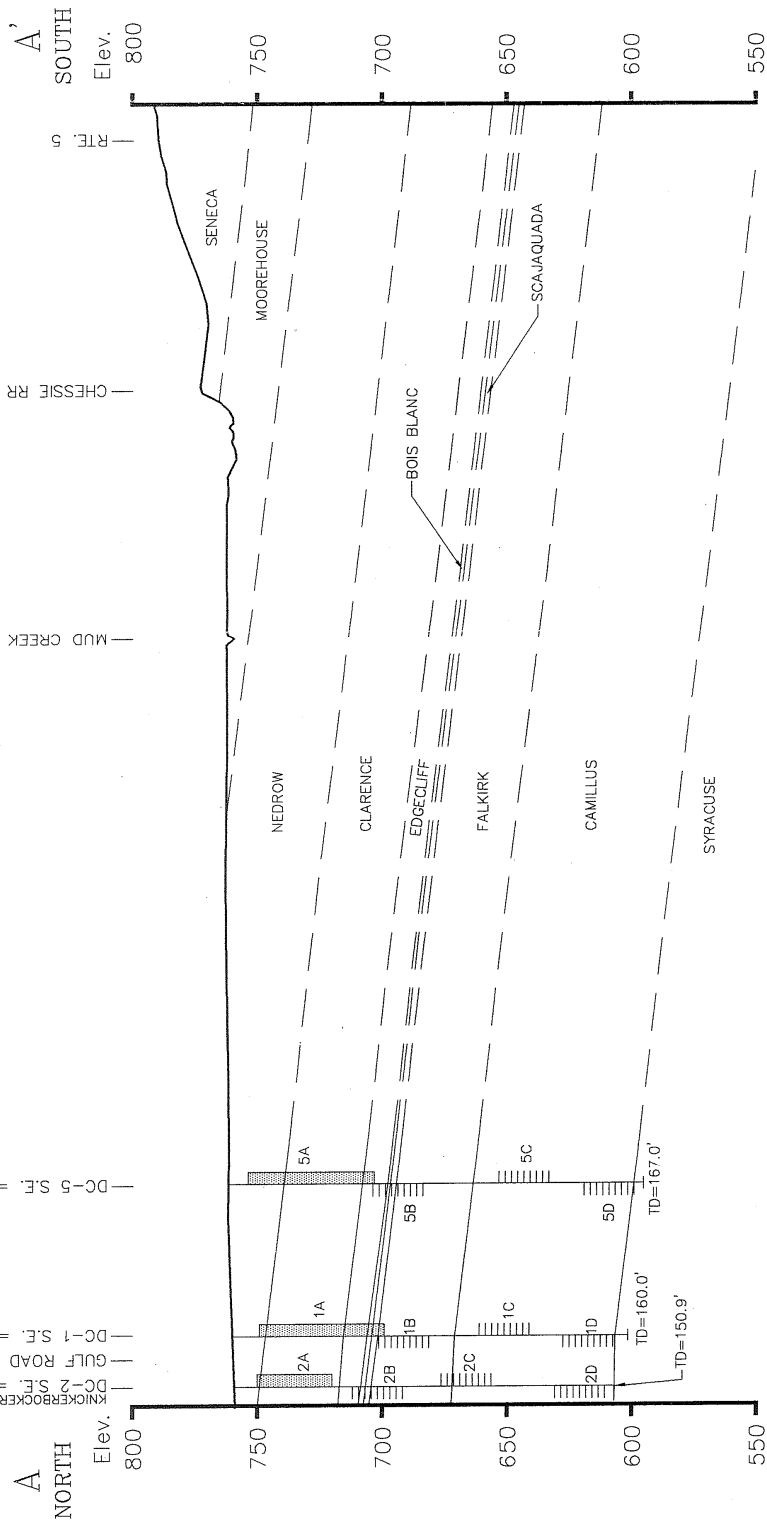
DOMESTIC WELL LOCATIONS
LEHIGH VALLEY RR DERAILMENT SITE

TOWN OF LEROY	GENESEE CO., N.Y.
PROJECT NO. 35990.200	DWG. NO. 35990-06
SCALE: 1"=2000'	DATE: 11/9/94
	FIGURE NO. 3-1



USGS 7.5min. quads., LeRoy, Churchville,
Clifton, & Caledonia, NY

DUNN ENGINEERING COMPANY DIVISION OF ROST ENVIRONMENT & INFRASTRUCTURE	BEDROCK GEOLOGY MAP	
	LEHIGH VALLEY RR DERAILMENT SITE	
TOWN OF LEROY	GENESEE COUNTY, NY	
PROJECT NO. 35090.400	DWC NO. 35090-08	
SCALE: 1"=2000'	DATE: 12/94	FIGURE NO. 4-3



LEGEND

- BOTTOM OF SURFACE CASING
- OPEN HOLE INTERVAL (WELL 5A)
- SCREENED INTERVAL (WELL 5B)
- S.E. = SURFACE ELEVATION
- T.D. = TOTAL DEPTH

DUNN ENGINEERING COMPANY
DIVISION OF **RUST** ENVIRONMENT & INFRASTRUCTURE

GEOLOGIC CROSS SECTION A-A'
KNICKERBOCKER HOTEL to ROUTE 5
LEHIGH VALLEY RR
DERAILMENT SITE

TOWN OF LEROY	GENESEE COUNTY, N.Y.
PROJECT NO. 35090.400	DWG. NO. X9454
SCALE: AS SHOWN	DATE: 10/5/94
	FIGURE NO. 4-3

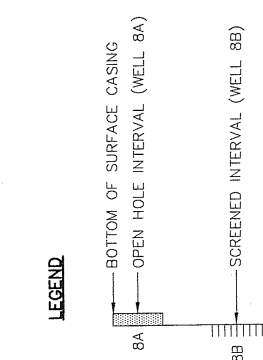
B NORTH
Elev. 800
750
700
650
600
550

DC-8 S.E. = 745.3'
FLINT HILL ROAD (RTE. 147)
DC-10 S.E. = 737.6'
DC-11 S.E. = 751.5'
FLINT HILL ROAD
GENESEE & WYOMING RR
RTE. 5

B' SOUTH
Elev. 800
750
700
650
600
550

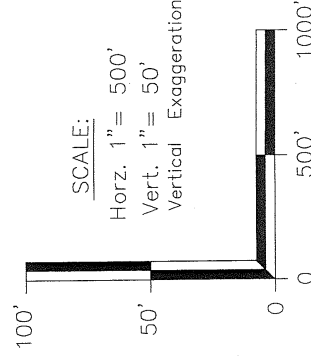
MODREHOUSE
NEDROW
BOIS BLANC
EDGECLIFF
SCAJAGUADA
FALKIRK
CAMILLUS
SYRACUSE

8A
8B
8C
8D
10A
10B
10C
10D
11A
11B
11C
11D
TD=155.7'
TD=130.2'
TD=160.5'

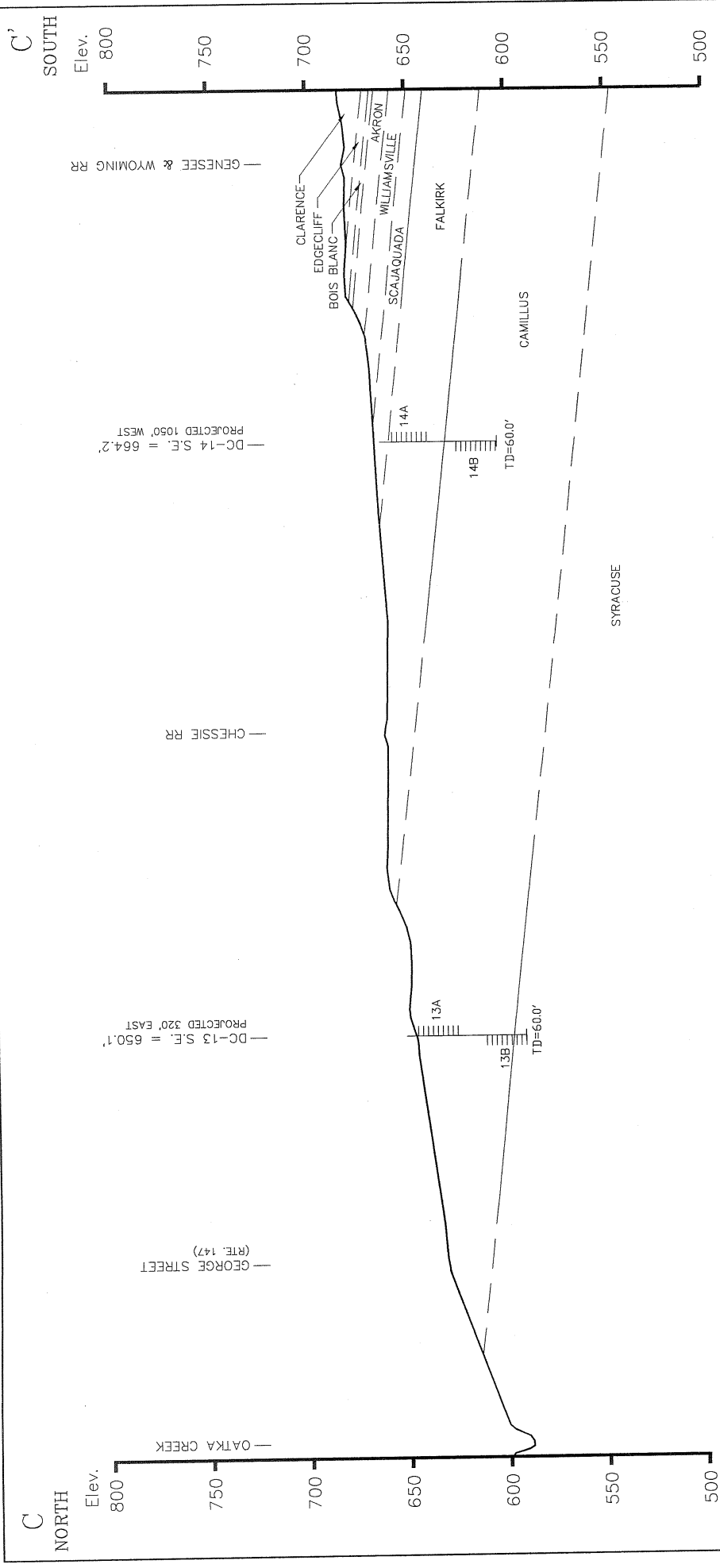


S.E. = SURFACE ELEVATION
T.D. = TOTAL DEPTH

SCALE:
Horz. 1" = 500'
Vert. 1" = 50'
Vertical Exaggeration = 10x



DUNN ENGINEERING COMPANY	
DIVISION OF RUST ENVIRONMENT & INFRASTRUCTURE	
GEOLOGIC CROSS SECTION B-B' FLINT HILL ROAD TO ROUTE 5 LEHIGH VALLEY RR DERAILMENT SITE	
TOWN OF LEROY	GENESEE COUNTY, N.Y.
PROJECT NO. 35090.400	DWG. NO. X9454-1
SCALE: AS SHOWN	DATE: 10/5/94
	FIGURE NO. 4-4



DC-13 S.E. # 650.1'
PROJECTED 320' EAST

CHESSIE RR

DC-14 S.E. # 664.2'
PROJECTED 1050' WEST

GEORGE STREET
(RTE. 147)

SYRACUSE

CAMILLUS

FALKIRK

SCAJUADA

WILLIAMSVILLE

AKRON

BOIS BLANC

EDGECLIFF

CLARENCE

GENESEE & WYOMING RR

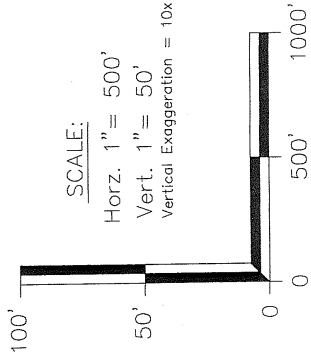
OATKA CREEK

LEGEND

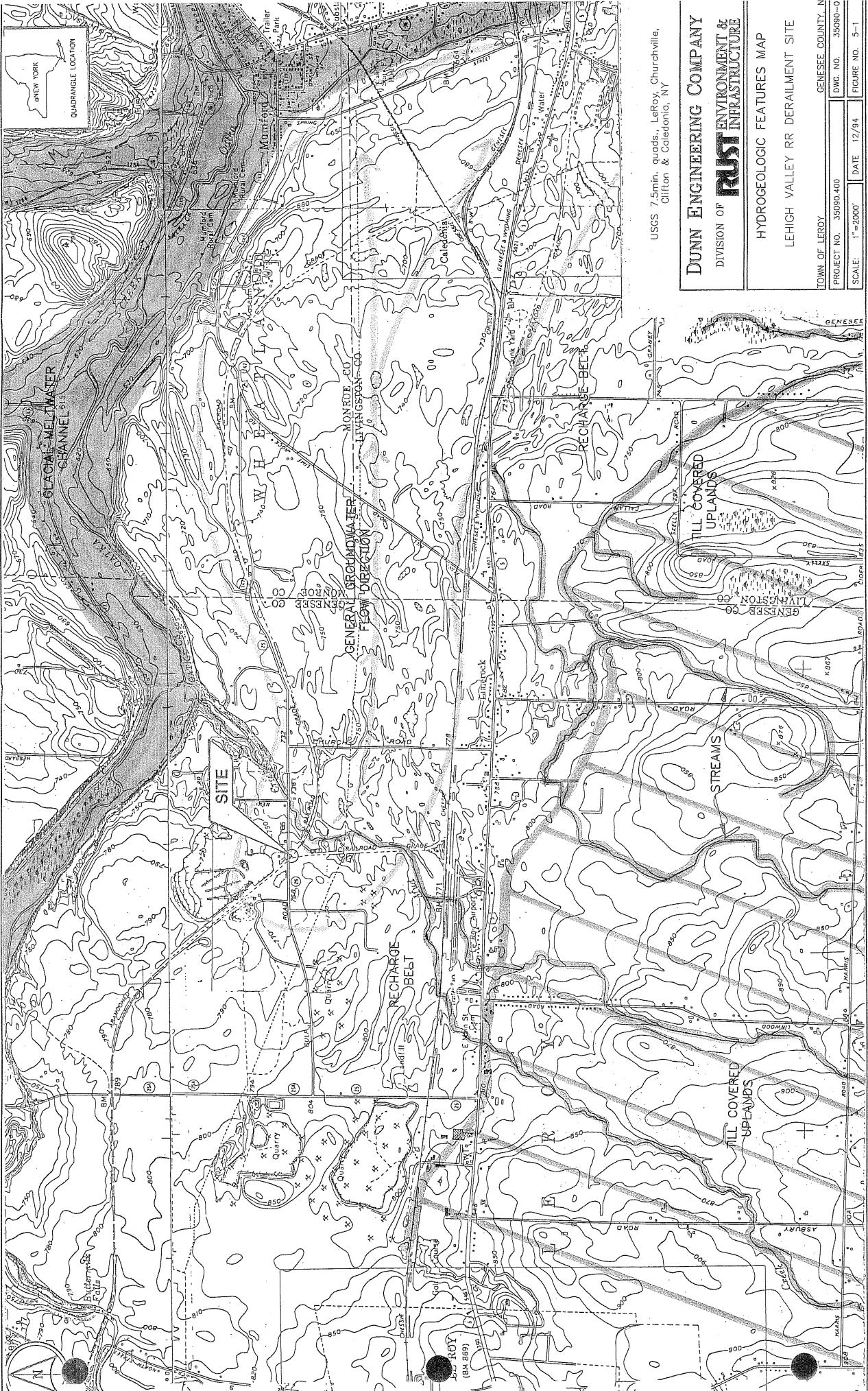


SCALE:

Horz. 1" = 500'
Vert. 1" = 50'
Vertical Exaggeration = 10x



DUNN ENGINEERING COMPANY	
DIVISION OF RUST ENVIRONMENT & INFRASTRUCTURE	
GEOLOGIC CROSS SECTION C-C' OATKA CREEK TO G&W RAILROAD LEHIGH VALLEY RR DERAILMENT SITE	
TOWN OF LEROY	GENESEE COUNTY, N.Y.
PROJECT NO. 35090.400	DWG. NO. X9454-2
SCALE: AS SHOWN	DATE: 10/5/94
	FIGURE NO. 4-5

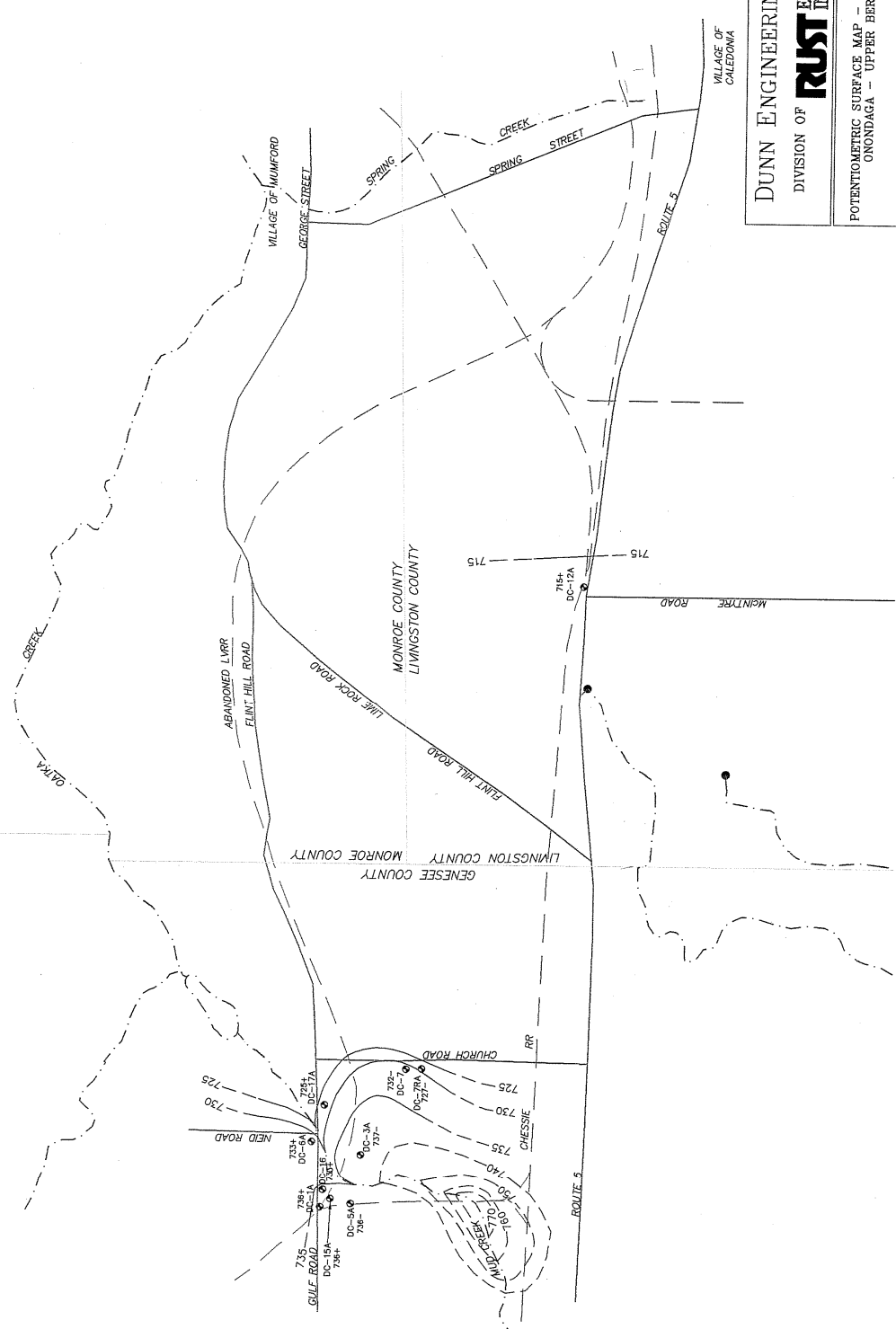
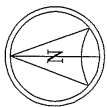


USGS 7.5min. quads. LeRoy, Churchville,
Clifton & Caledonia, NY

DUNN ENGINEERING COMPANY
DIVISION OF **RUST** ENVIRONMENT & INFRASTRUCTURE

HYDROGEOLOGIC FEATURES MAP
LEHIGH VALLEY RR DERAILMENT SITE

TOWN OF LEROY	GENESEE COUNTY, N
PROJECT NO. 35090-400	DWG. NO. 35090-0
SCALE: 1"=2000'	DATE: 12/94
	FIGURE NO. 5-1



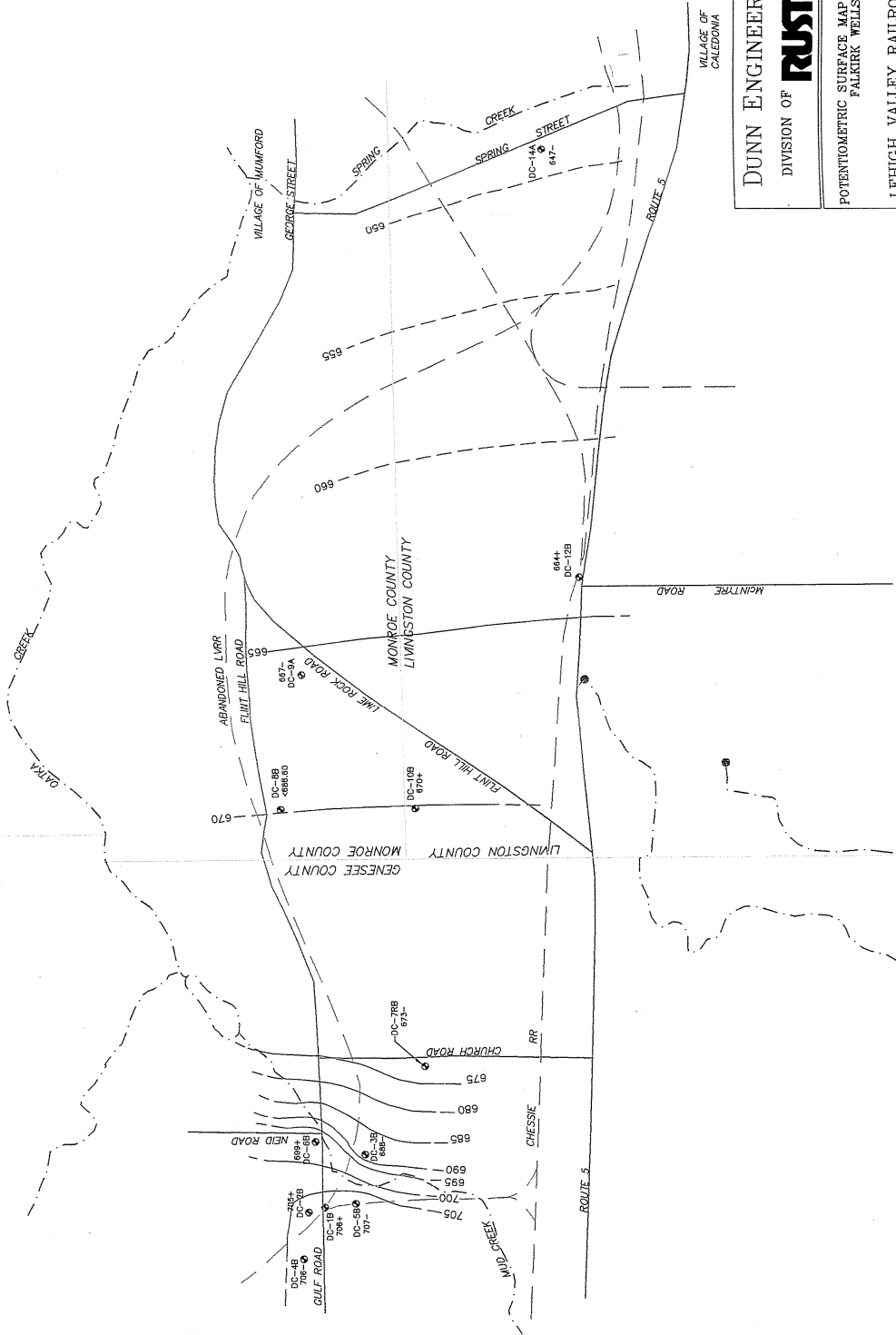
DUNN ENGINEERING COMPANY
DIVISION OF **RUST ENVIRONMENT & INFRASTRUCTURE**

POTENTIOMETRIC SURFACE MAP - HIGH WATER CONDITIONS
ONONDAGA - UPPER BERTIE WELLS (3/24/94)

LEHIGH VALLEY RAILROAD DERAILMENT SITE

TOWN OF LEROY	GENESSEE COUNTY, N.Y.
PROJECT NO. 35090.400	DWG. NO. 35090-22
SCALE: 1"=2000'	DATE: 11/28/94
	FIGURE NO. 5-28

- NOTES**
- 737+ - - INDICATES WATER LEVEL ELEVATION
 - + - - INDICATES WATER LEVEL IS <0.5 GREATER THAN WATER ELEVATION SHOWN
e.g. 715.01 to 715.49 = 715+
 - - INDICATES WATER LEVEL IS >0.5 LESS THAN WATER ELEVATION SHOWN
e.g. 715.50 to 715.99 = 716-



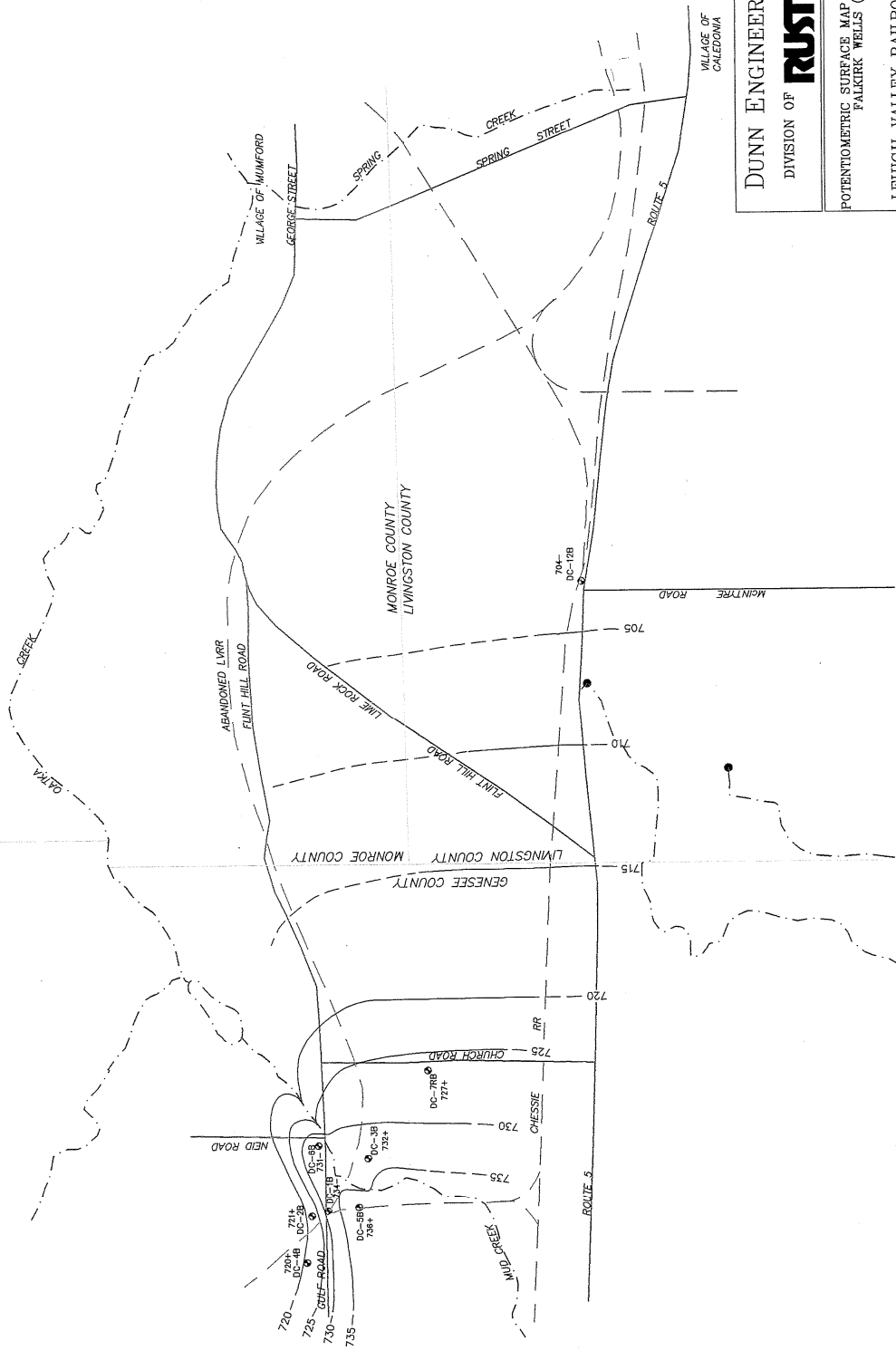
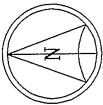
DUNN ENGINEERING COMPANY
DIVISION OF **RUST** ENVIRONMENT & INFRASTRUCTURE

POTENTIOMETRIC SURFACE MAP - LOW WATER CONDITIONS
FALKIRK WELLS (8/15/94)

LEHIGH VALLEY RAILROAD DERAILMENT SITE

TOWN OF LEROY GENESEE COUNTY, N.Y.
PROJECT NO. 35090.400 DWG. NO. 35090-24
SCALE: 1"=2000' DATE: 11/28/94 FIGURE NO. 5-27

NOTES:
737+ - INDICATES WATER LEVEL ELEVATION
+ - INDICATES WATER LEVEL IS <0.5 GREATER THAN WATER ELEVATION SHOWN
 e.g. 715.01 to 715.49 = 715+
- - INDICATES WATER LEVEL IS <0.5 LESS THAN WATER ELEVATION SHOWN
 e.g. 715.50 to 715.99 = 716-



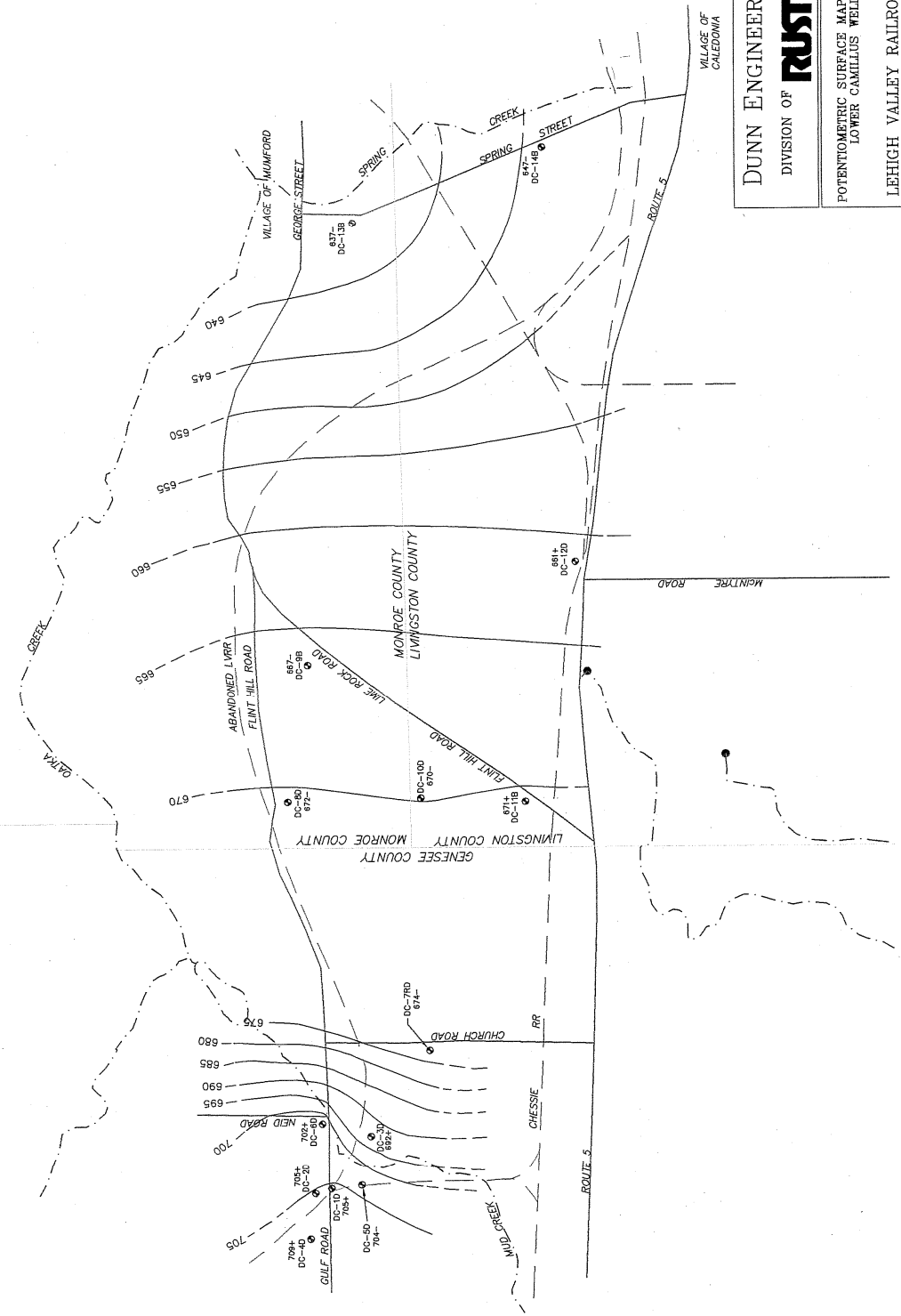
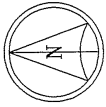
DUNN ENGINEERING COMPANY
 DIVISION OF **RUST** ENVIRONMENT & INFRASTRUCTURE

POTENTIOMETRIC SURFACE MAP - HIGH WATER CONDITIONS
 FALKIRK WELLS (3/24/94)

LEHIGH VALLEY RAILROAD DERAILMENT SITE

TOWN OF LEROY	GENESEE COUNTY, N.Y.
PROJECT NO. 35090.400	DWG. NO. 35090-23
SCALE: 1"=2000'	DATE: 11/28/94
	FIGURE NO. 5-28

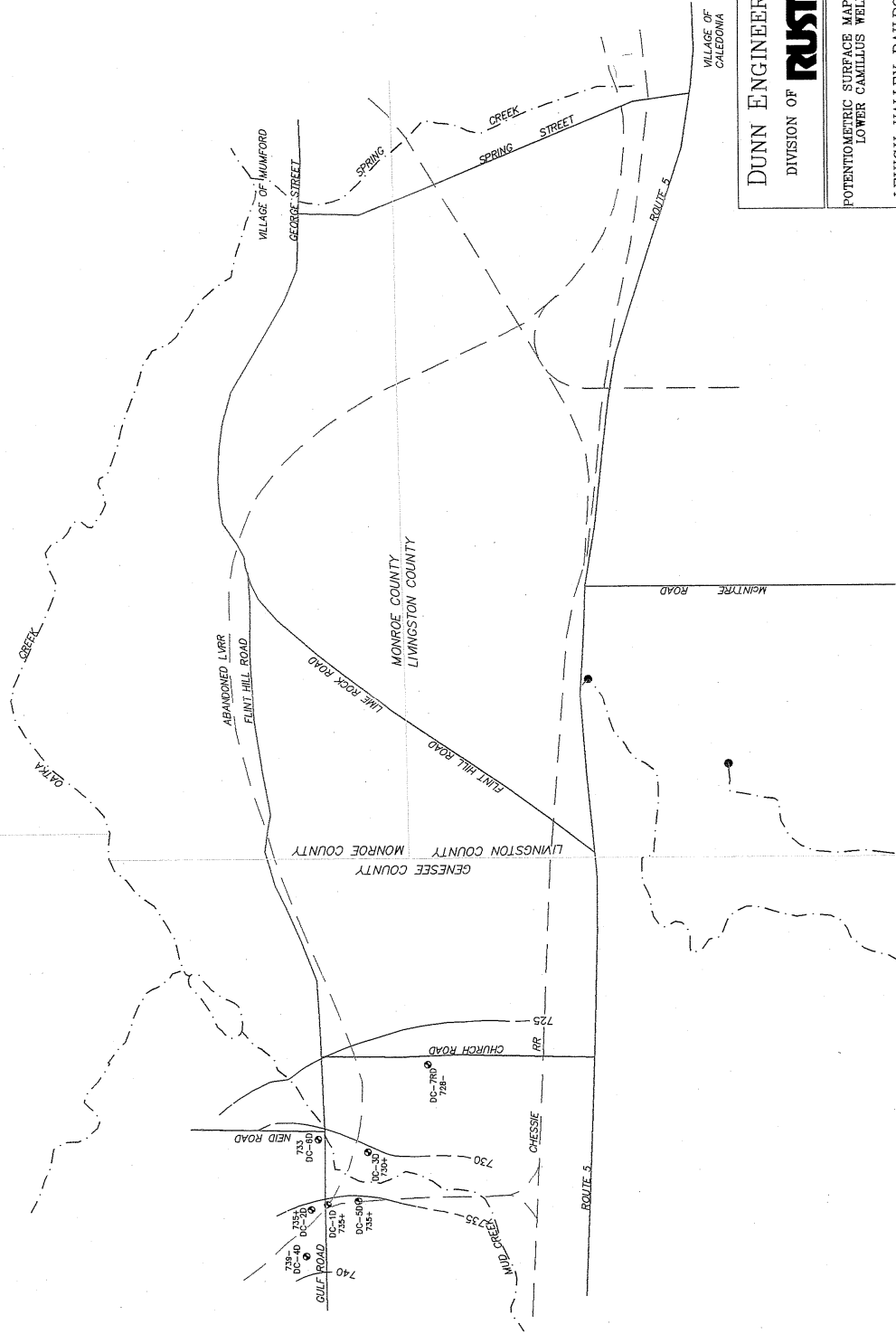
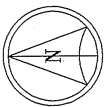
- NOTES**
- 737+ - - INDICATES WATER LEVEL ELEVATION
 - + - - INDICATES WATER LEVEL IS .5 GREATER THAN WATER ELEVATION SHOWN
 - o.g. 715.01 TO 715.49 = 715+
 - - INDICATES WATER LEVEL IS .5 LESS THAN WATER ELEVATION SHOWN
 - o.g. 715.50 TO 715.99 = 716-



DUNN ENGINEERING COMPANY DIVISION OF RUST ENVIRONMENT & INFRASTRUCTURE	
POTENTIOMETRIC SURFACE MAP - LOW WATER CONDITIONS LOWER CAMILLUS WELLS (6/15/94)	
LEHIGH VALLEY RAILROAD DERAILMENT SITE	
TOWN OF LEROY	GENESSEE COUNTY, N.Y.
PROJECT NO. 35090-400	DWG. NO. 35090-26
SCALE: 1"=2000'	DATE: 11/28/94
	FIGURE NO. 5-29

NOTES:

- 737+ - - INDICATES WATER LEVEL ELEVATION
- + - - INDICATES WATER LEVEL IS <0.5 GREATER THAN WATER ELEVATION SHOWN
e.g. 715.01 to 715.49 = 715+
- - - INDICATES WATER LEVEL IS <0.5 LESS THAN WATER ELEVATION SHOWN
e.g. 715.50 to 715.99 = 716-



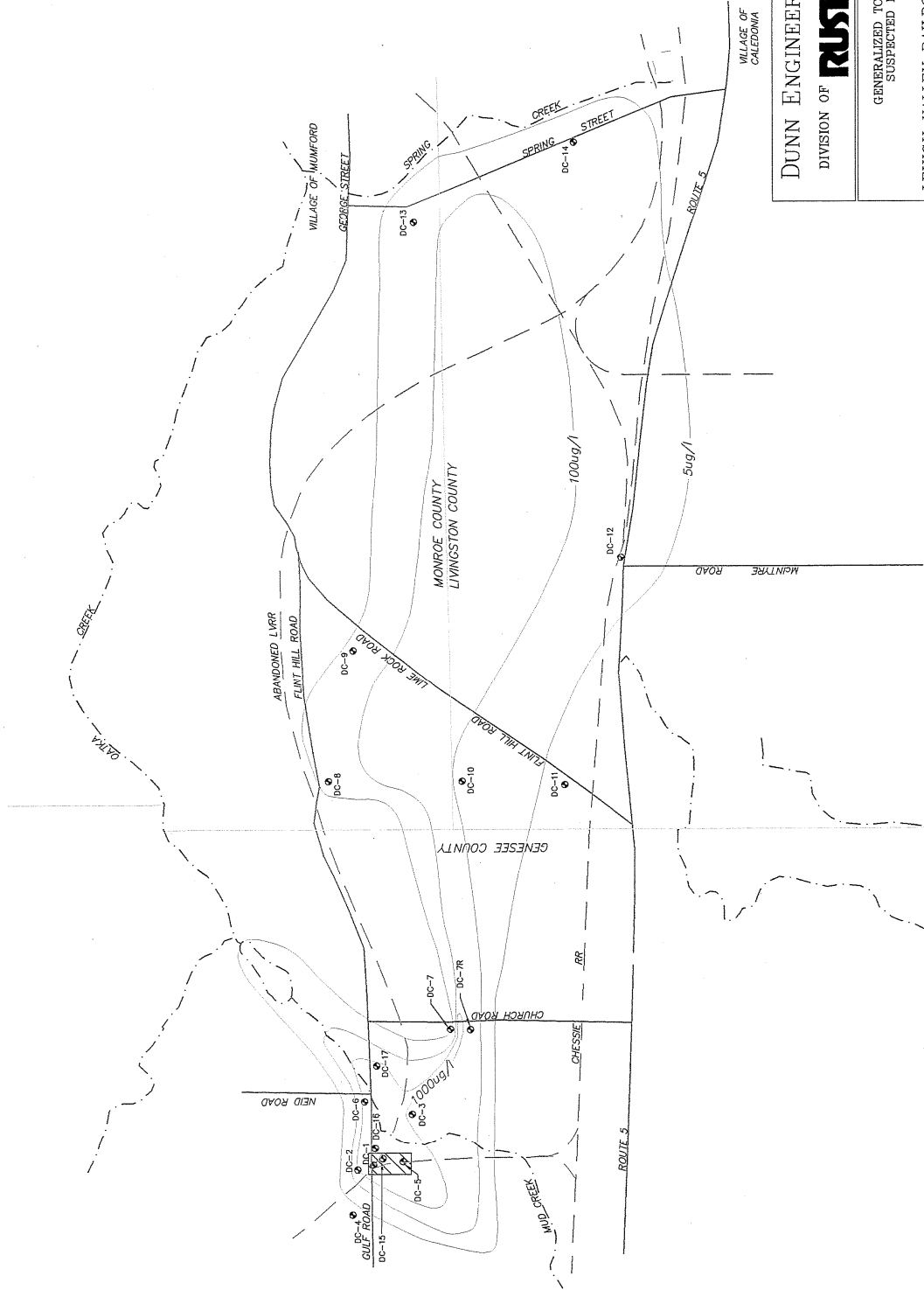
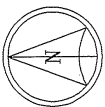
DUNN ENGINEERING COMPANY
DIVISION OF **RUST** ENVIRONMENT & INFRASTRUCTURE

POTENTIOMETRIC SURFACE MAP - HIGH WATER CONDITIONS
LOWER CAMILLUS WELLS (3/24/94)

LEHIGH VALLEY RAILROAD DERAILMENT SITE

TOWN OF LEROY	GENESEE COUNTY, N.Y.
PROJECT NO. 35090.400	DWG. NO. 35090-25
SCALE: 1"=2000'	DATE: 11/28/94
	FIGURE NO. 5-30

- NOTES:**
- INDICATES WATER LEVEL ELEVATION
 - + INDICATES WATER LEVEL IS 0.5 GREATER THAN WATER ELEVATION SHOWN
e.g. 715.01 to 715.49 = 715+
 - INDICATES WATER LEVEL IS 0.5 LESS THAN WATER ELEVATION SHOWN
e.g. 715.50 to 715.99 = 715-



VILLAGE OF CALEDONIA

DUNN ENGINEERING COMPANY
DIVISION OF **RUST** ENVIRONMENT & INFRASTRUCTURE

GENERALIZED TCE PLUME AND SUSPECTED NAPL AREA

LEHIGH VALLEY RAILROAD DERAILMENT SITE

TOWN OF LEROY	GENESEE COUNTY, N.Y.
PROJECT NO. 35090,400	DWG. NO. 35090-28
SCALE: 1"=2000'	DATE: 12/6/94
	FIGURE NO. 7-1

LEGEND



SUSPECTED NAPL AREA