

***2-Phase<sup>TM</sup> Extraction Remedial Implementation Report***  
***Emerson Power Transmission, Ithaca, NY***  
***(Morse Industrial Corporation, Site No. 7-55-010)***

***Prepared for:***

***Emerson Electric Company***  
***8000 West Florissant***  
***St. Louis, Missouri 63136-8506***

***Prepared by:***

***Radian International LLC***  
***155 Corporate Woods, Suite 100***  
***Rochester, New York 14623***

***April 1997***

2-PHASE™ Extraction Remedial Implementation Report  
Emerson Power Transmission, Ithaca, NY  
(Morse Industrial Corporation, Site No. 7-55-010)

Prepared for:

Emerson Electric Company  
8000 West Florissant  
St. Louis, Missouri 63136-8506

Prepared by:

Radian International LLC  
155 Corporate Woods, Suite 100  
Rochester, New York 14623

April 1997

This section of the Remedial Actions Implementation Report provides the previously submitted 2-PHASE™ Groundwater Extraction Construction Certification report. It includes as-built construction drawings of the 2-PHASE system and a signed certification by a Professional Engineer in the State of New York. This Construction Certification Report was submitted to Mr. Amar Nagi of the New York State Department of Environmental Conservation on October 16, 1996.

To meet the other requirements of the Record of Decision (ROD) for 2-PHASE groundwater extraction and treatment at the site the following documents have been developed and will be provided to NYSDEC in separate transmittals:

- **Operation, Maintenance, and Monitoring Manual for Operation of a 2-PHASE™ Extraction System:**
  - Health & Safety Plan for Operation of a 2-PHASE™ Extraction System
  - Sampling Plan for Operation of a 2-PHASE™ Extraction System
  - Data Evaluation and Reporting Plan for Operation of a 2-PHASE™ Extraction System
  - 2-PHASE™ Extraction Skid Operation and Maintenance Manual
- **Semi-Annual 2-PHASE™ Extraction Progress Report (submitted on an ongoing semi-annual basis)**

Radian Engineering Inc.

---

October 16, 1996

155 Corporate Woods  
Suite 100  
Rochester, NY 14623  
(716) 292-1870  
FAX# (716) 292-1878

Mr. Amar Nagi

Bureau of Construction Services

Division of Hazardous Waste Remediation

New York State Department of Environmental Conservation

50 Wolf Road

Albany, NY 12233-7010

SUBJECT: Site No. 7-55-010; Emerson Power Transmission (formerly Morse Industrial Corporation), Tompkins, New York; Construction Certification and As-Built Drawings for 2-PHASE™ System Installation

Dear Mr. Nagi:

In accordance with the Order on Consent Index #A7-0125-87-09, paragraph XI, for Site No. 7-55-010, Emerson Power Transmission (formerly Morse Industrial Corporation), Tompkins, New York, attached are the following documents:

- One copy of as-built drawings of the 2-PHASE System installation; and
- A certification that construction was completed in accordance with the approved Remedial Design and any approved modifications.

Please provide us with an acknowledgement that implementation of the Remedial Program is complete and in accordance with the approved Remedial Design. If you have any questions, please call John Yackiw at (716) 292-1870 or me at (703) 713-6437.

Sincerely,

*John Yackiw for Edward M. Andrechak*

Edward M. Andrechak

Project Manager

## ENGINEER'S CONSTRUCTION CERTIFICATION STATEMENT

OWNER: Emerson Power Transmission  
(Formerly Morse Industrial Corp.);  
Tompkins, New York

NYSDEC SITE NO. 7-55-010

ENGINEER: Radian Engineering of New York

PROJECT: 2-PHASE Extraction™ System Installation

I hereby certify, as a Professional Engineer registered in the State of New York, that, based on our continuous observations of the subject contract, the work of this contract has been completed in general conformance with the Final Remedial Design, 2-PHASE Extraction System document, dated May 1995. Construction was mechanically complete on July 19, 1996.

As-built drawings of the 2-PHASE Extraction System accompany this certification. Minor modifications were made to the electrical drawings (E1 and E2). Specifically, air inlet louvers were placed at both ends of the building for better ventilation, and an all stop feature was added to the fan start push button. All other aspects of the design remained as previously submitted.

By:

*John C. Yackiw*

John C. Yackiw, P.E.  
Senior Engineer  
Radian Engineering of New York

Date:

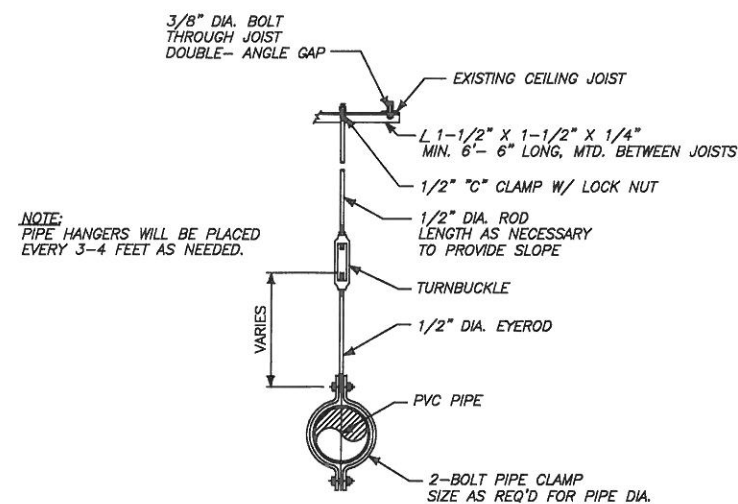
10/18/96



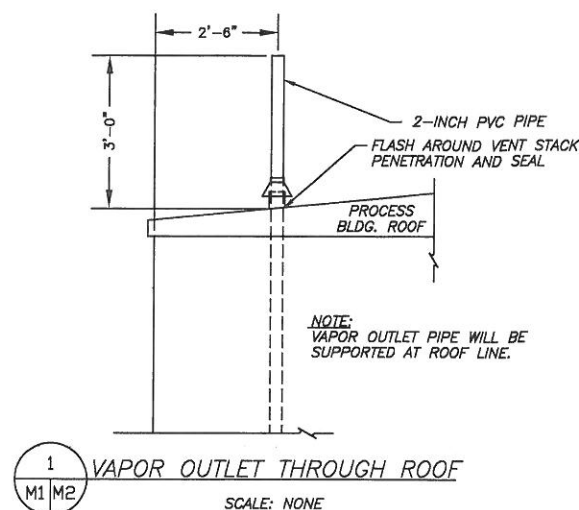
Radian Engineering Inc.

Attachments

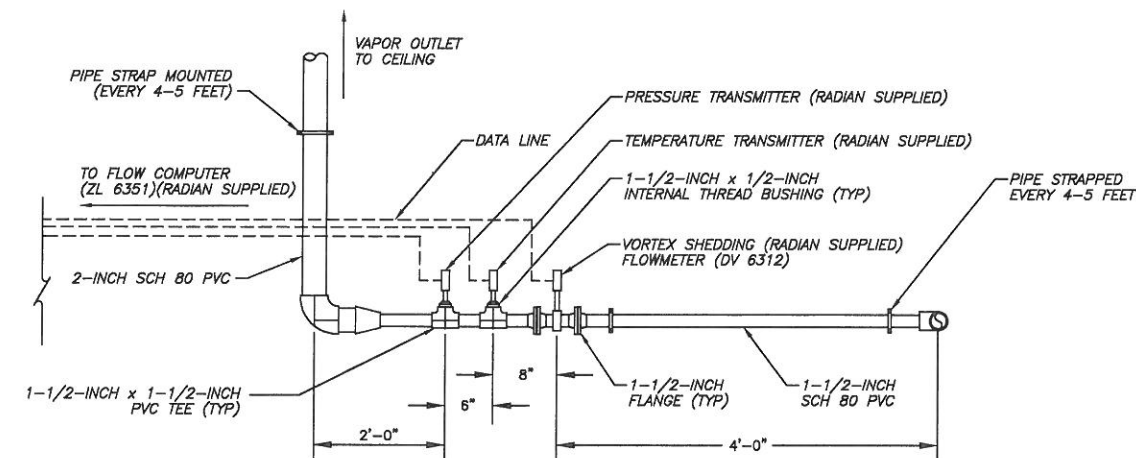
c: Derek Chase, Emerson  
John Yackiw, Radian



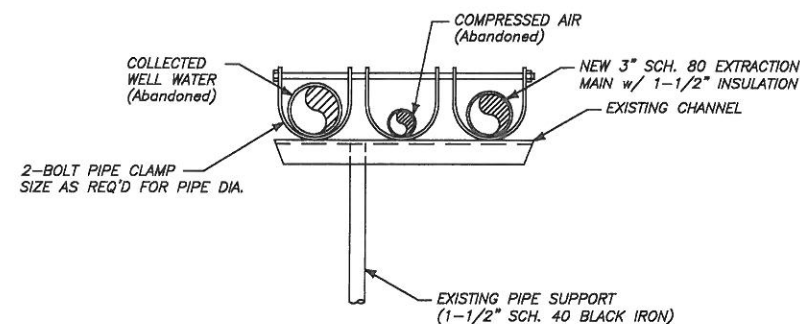
**TYPICAL INTERIOR HANGER  
ASSEMBLY DETAIL**  
SCALE: NONE  
MTD. 5'-6" O.C.



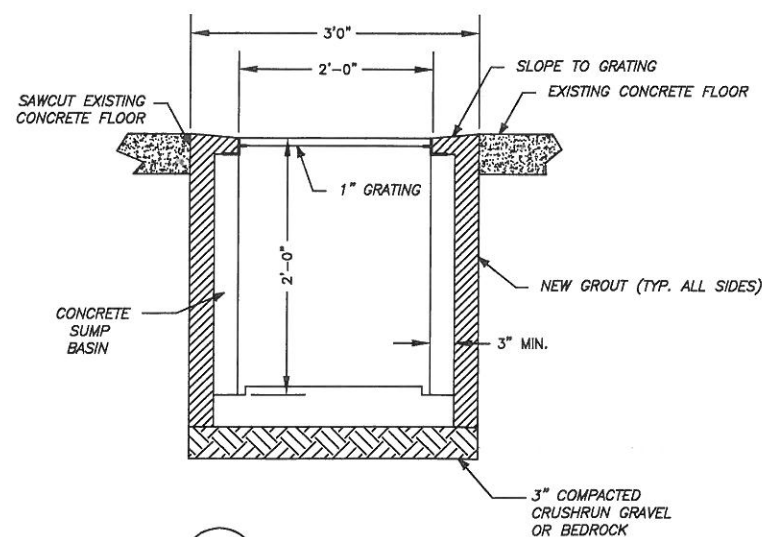
**1 VAPOR OUTLET THROUGH ROOF**  
SCALE: NONE



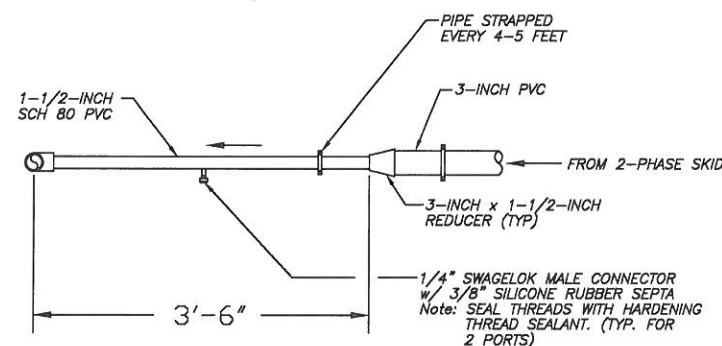
VIEW LOOKING EAST



**TYPICAL EXTERIOR HANGER  
ASSEMBLY DETAIL (TYP. 1)**  
SCALE: 1" = 1'-0"  
MTD. 12.2' O.C.

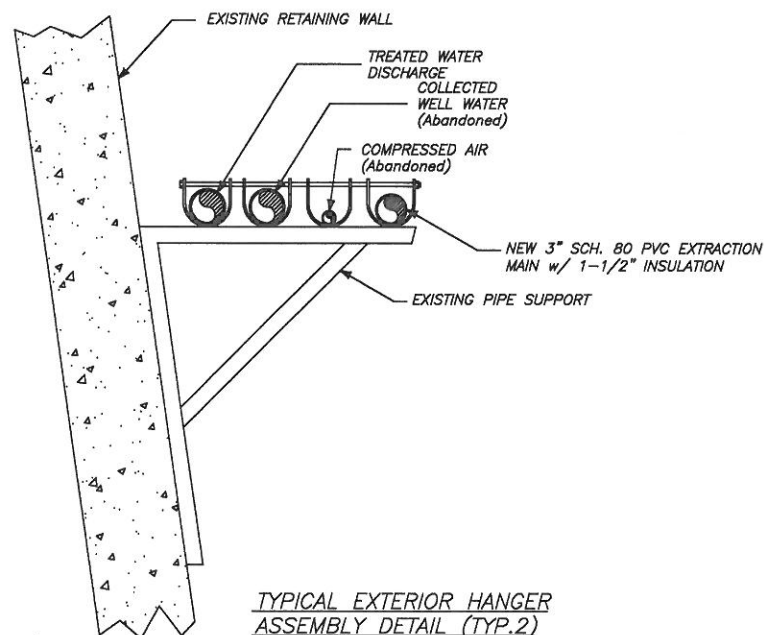


**2 SUMP DETAIL**  
SCALE: 1" = 1'-0"



VIEW LOOKING SOUTH

**3 VORTEX FLOWMETER  
DETAIL C**  
SCALE: 1" = 1'-0"



**TYPICAL EXTERIOR HANGER  
ASSEMBLY DETAIL (TYP. 2)**  
SCALE: NONE  
MTD. 14'-0" O.C.

REVISIONS	AS-BUILTS	LEHIGH
		10-2-96

PREPARED FOR  
EMERSON ELECTRIC COMPANY  
8000 W. FLORISSANT  
ST. LOUIS, MO. 63136

SCALE  
AS SHOWN  
CONFIDENTIAL-ALL RIGHTS RESERVED-PROPERTY OF  
**RADIAN**  
ENGINEERING  
ROCHESTER, NEW YORK 14623

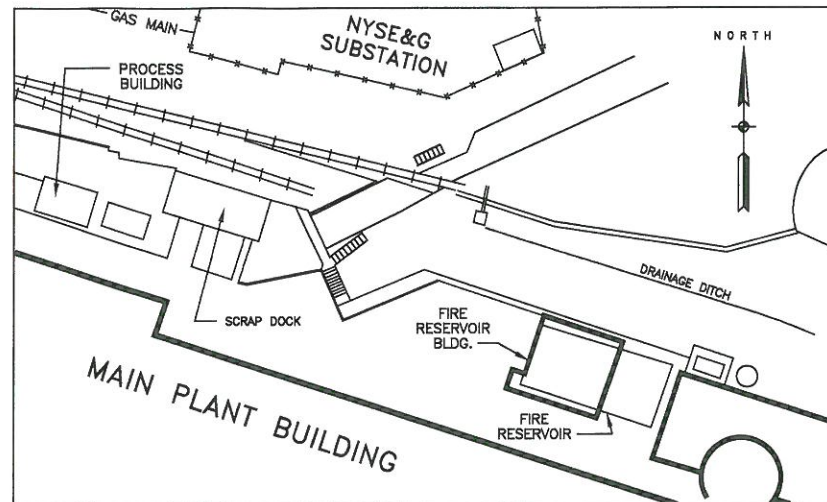
DESIGNED BY JCY	DATE 1/3/96
DRAWN BY JAS	DATE 1/12/96
CHECKED BY JES	DATE 1/15/96
APPROVED BY	DATE

DRAWING TITLE PROCESS BUILDING EQUIPMENT DETAILS		
CAD DRAWING FILE: EMER9506.JWG	CONTRACT NO. 705-014	DRAWING NO. M-2
REV. A		

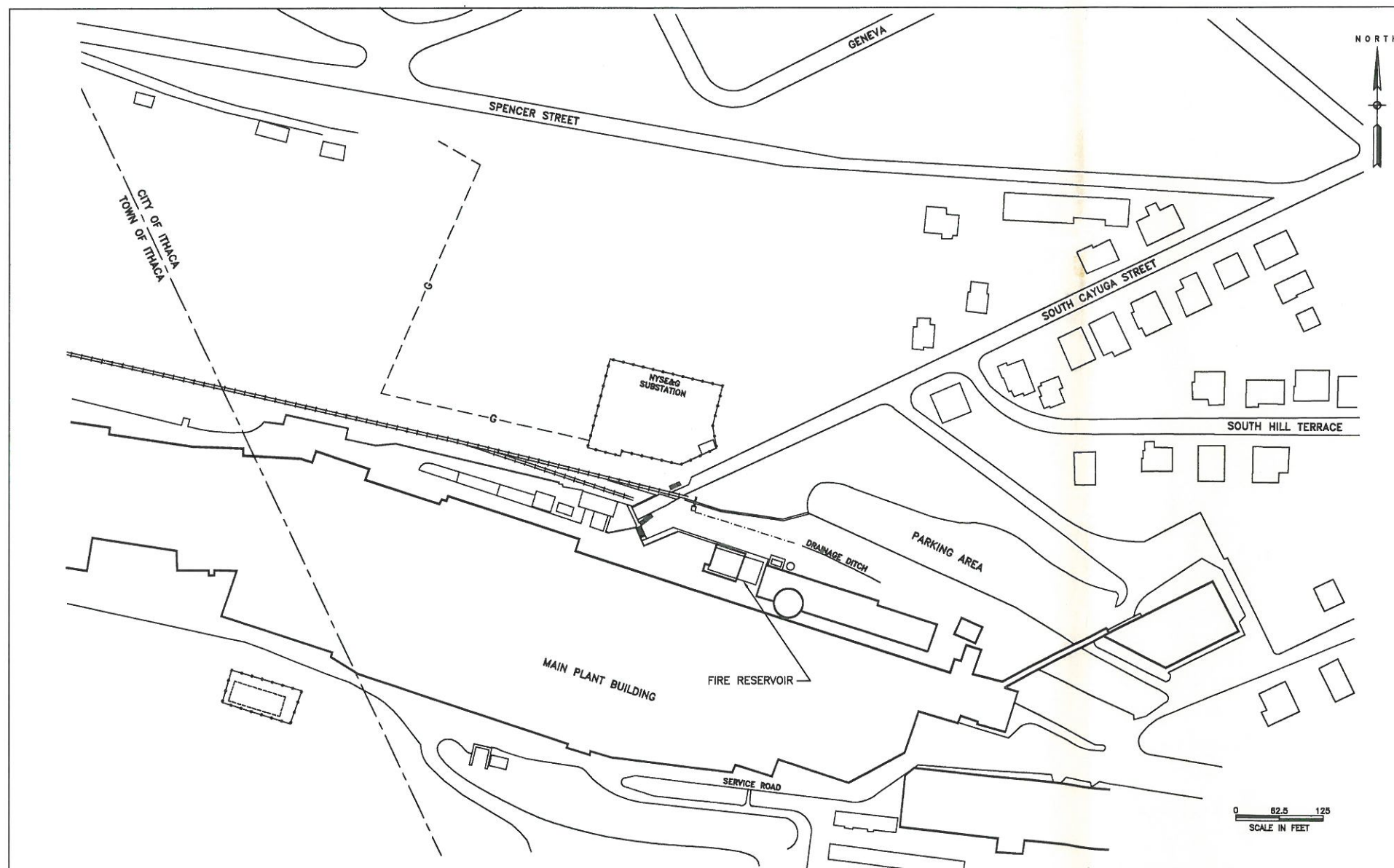


# 2-PHASE EXTRACTION AND TREATMENT SYSTEM

EMERSON POWER TRANSMISSION  
ITHACA, NEW YORK  
JANUARY 1996



SITE AREA



SITE PLOT PLAN

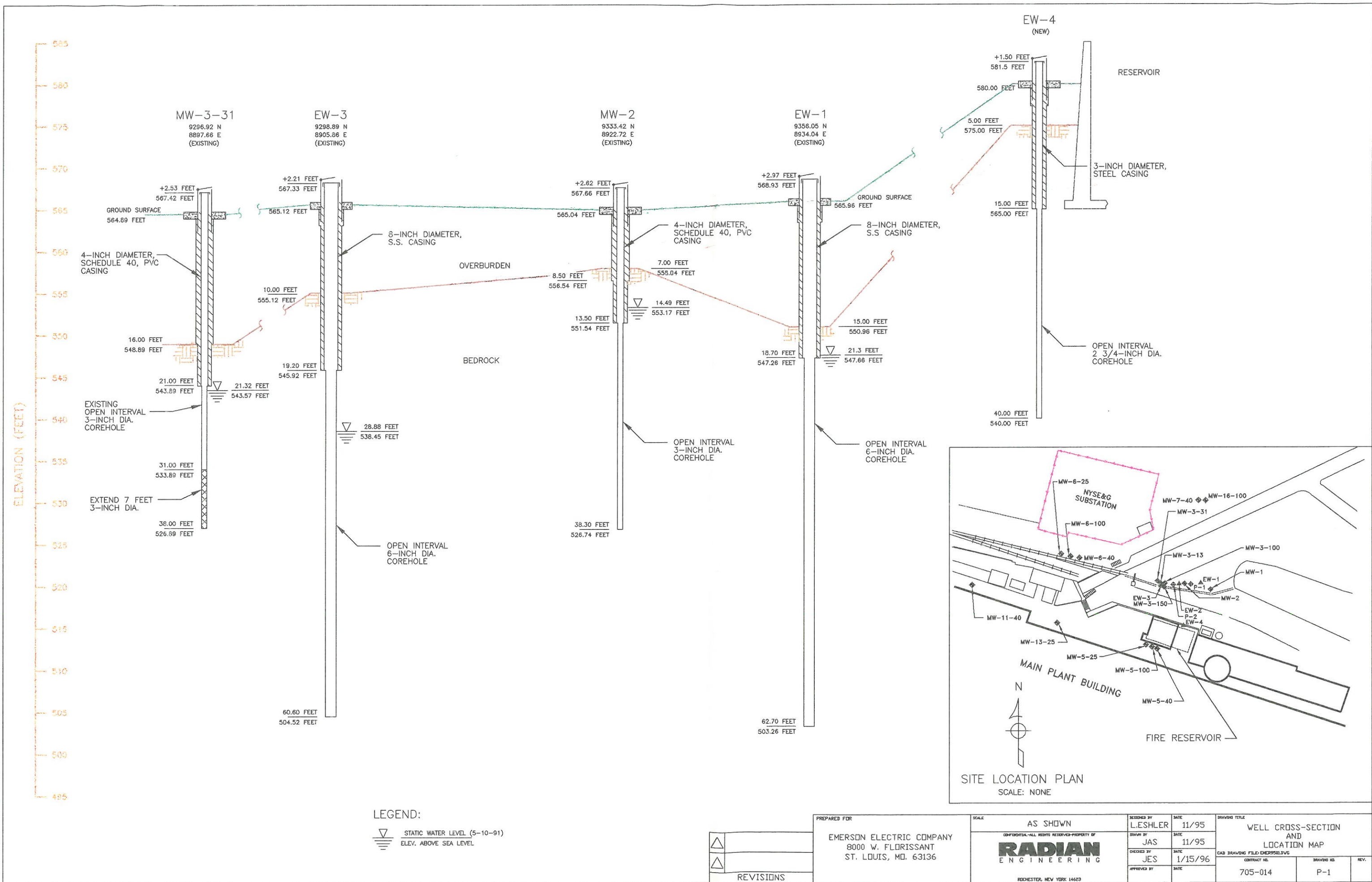
DRAWING NUMBER	DRAWING TITLE
P-1	Well Cross-section and Location Map
P-2	Site Plan and Piping Layout
P-3	Wellbox and Well Head Locations
M-1	Process Building Equipment Layout
M-2	Process Building Equipment Details
E-1	Process Building Electrical One-Line
E-2	Process Building Electrical One-Line
I-1	Process and Instrumentation Diagram

CONFIDENTIAL-ALL RIGHTS RESERVED-PROPERTY OF

**RADIAN**  
ENGINEERING

ROCHESTER, NEW YORK 14623





LEGEND:  
▽ STATIC WATER LEVEL (5-10-91)  
ELEV. ABOVE SEA LEVEL

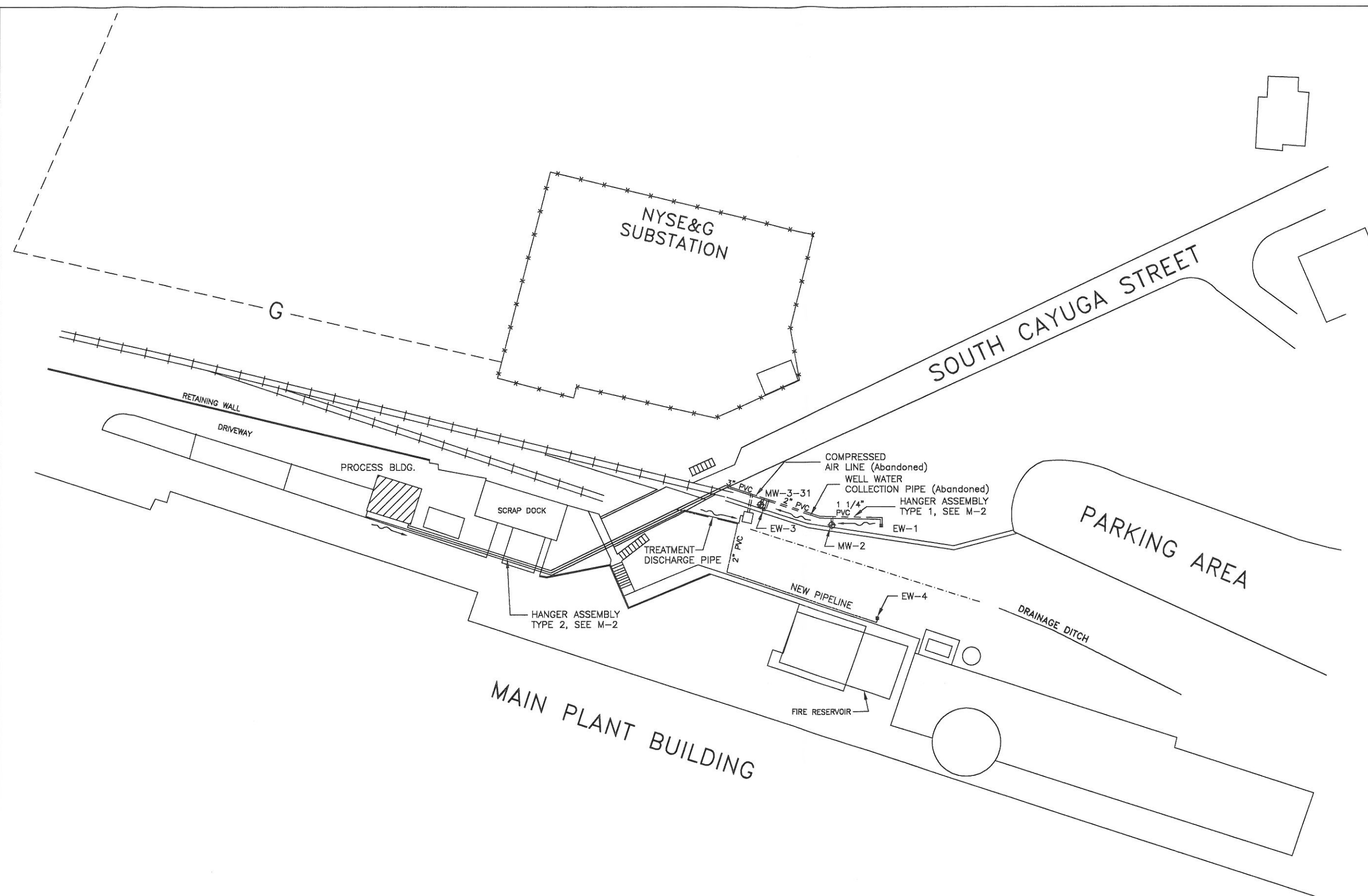
△
△
REVISIONS

PREPARED FOR  
EMERSON ELECTRIC COMPANY  
8000 W. FLORISSANT  
ST. LOUIS, MO. 63136









SCALE  
AS SHOWN  
CONFIDENTIAL-ALL RIGHTS RESERVED-PROPERTY OF  
**RADIAN**  
ENGINEERING  
ROCHESTER, NEW YORK 14623

DESIGNED BY	L.ESHLER	DATE	11/95
DRAWN BY	JAS	DATE	11/95
CHECKED BY	JES	DATE	1/15/96
APPROVED BY		DATE	

WELL CROSS-SECTION AND LOCATION MAP		
CAD DRAWING FILED: EMERG0503.DWG	CONTRACT NO.	DRAWING NO.
	705-014	P-1
REV.		



LEGEND

-  2-PHASE MONITORING WELL
-  2-PHASE EXTRACTION WELL
-  OVERHEAD 4-INCH SCH 80 PVC
-  OVERHEAD 3-INCH SCH 80 PVC
-  FLOW DIRECTION (PIPING IS TO BE SLOPED A MINIMUM OF 0.5% DOWNWARD TOWARD 2-PHASE EQUIPMENT)
-  EXISTING BURIED NATURAL GAS LINE
-  FENCE
-  AREA MODIFIED TO CONTAIN 2-PHASE REMEDIATION EQUIPMENT



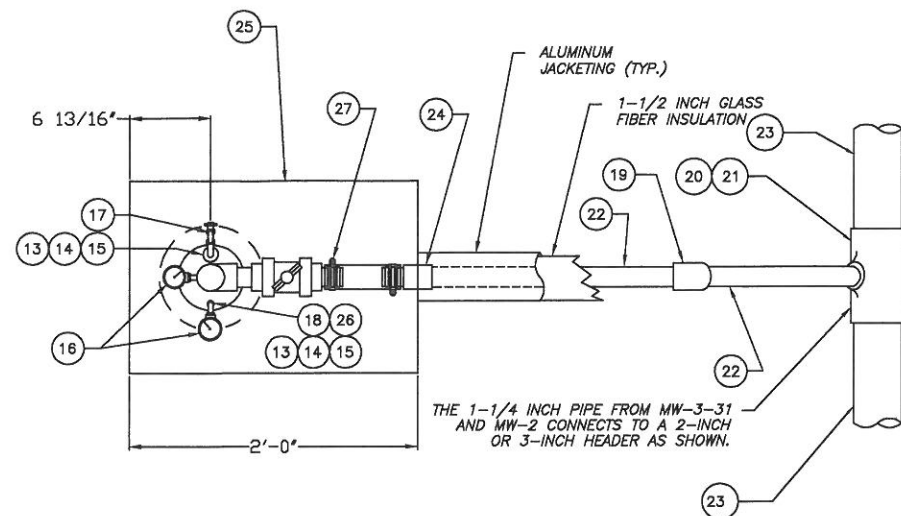
△	
△	
REVISIONS	

PREPARED FOR  
EMERSON ELECTRIC COMPANY  
8000 W. FLOISSANT  
ST. LOUIS, MO. 63136

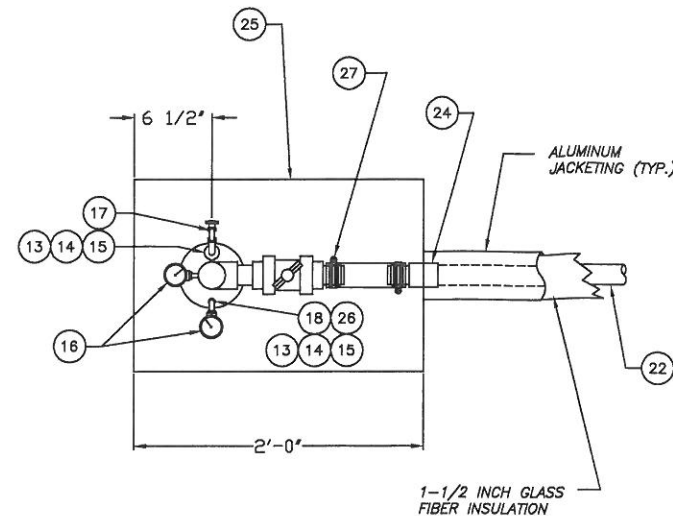
SCALE  
1"=30'-0"  
CONFIDENTIAL-ALL RIGHTS RESERVED-PROPERTY OF  
**RADIAN**  
ENGINEERING  
ROCHESTER, NEW YORK 14623

DESIGNED BY	JCY	DATE	1/3/96
DRAWN BY	JAS	DATE	1/12/96
CHECKED BY	JES	DATE	1/15/96
APPROVED BY		DATE	

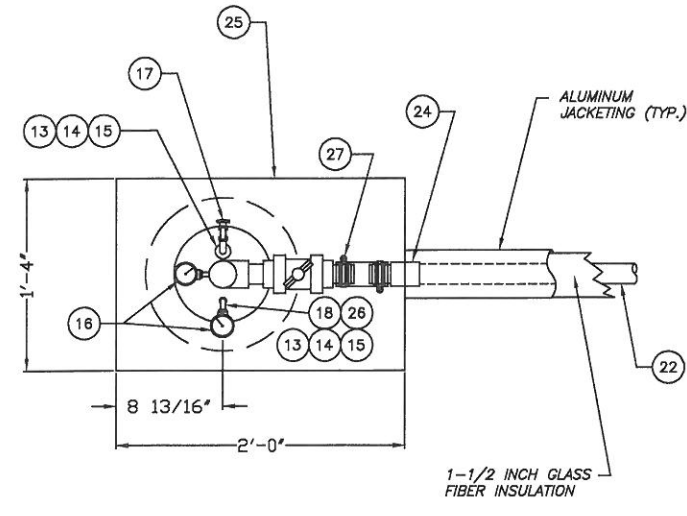
DRAWING TITLE SITE PLAN AND PIPING LAYOUT			
CAD DRAWING FILED: EMER9505.DWG			
CONTRACT NO. 705-014		DRAWING NO. P-2	REV. 



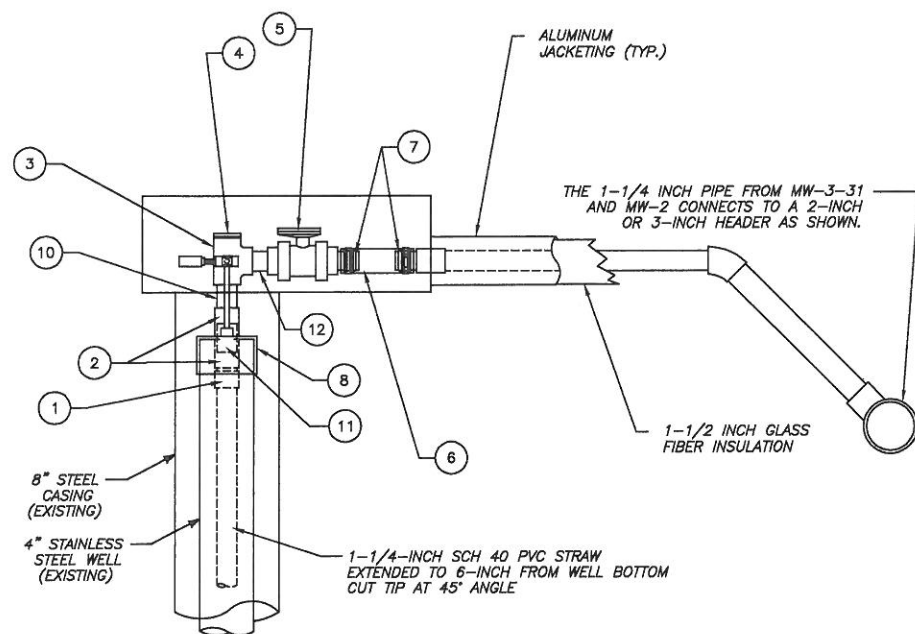
MW-3-31 AND MW-2  
PLAN VIEW (TYP.)



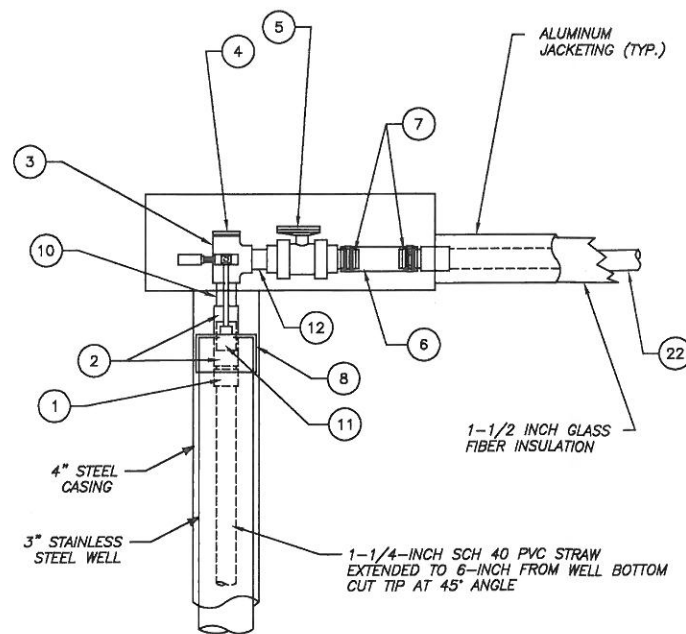
EW-4  
PLAN VIEW (TYP.)



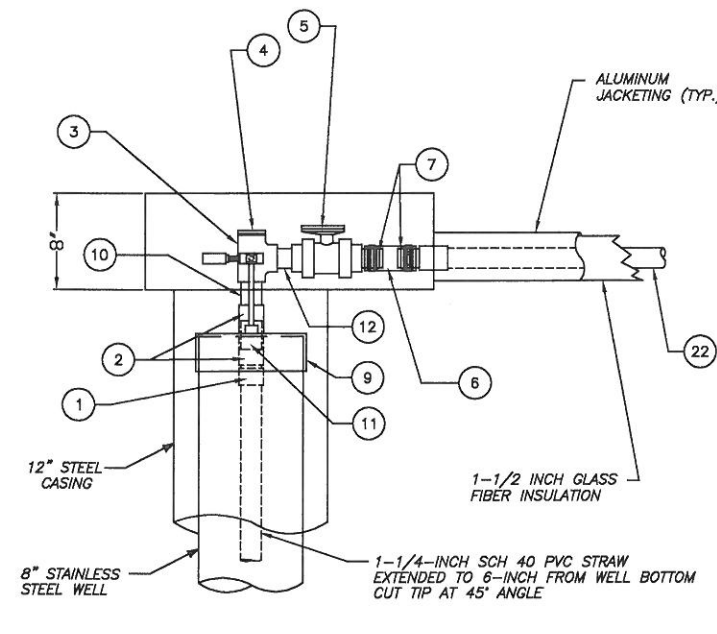
EW-1 AND EW-3  
PLAN VIEW (TYP.)



MW-3-31 AND MW-2  
ELEVATION VIEW (TYP.)



EW-4  
ELEVATION VIEW (TYP.)



EW-1 AND EW-3  
ELEVATION VIEW (TYP.)

NUMBER	PART NAME	# REQ.	MATERIAL	SIZE
1	MALE ADAPTER	1	PVC	1-1/4"
2	FEMALE ADAPTER	2	PVC	1-1/4"
3	TEE (Fipt x Fipt x Fipt)	1	PVC	1-1/4"
4	PLUG (Mipt)	1	PVC	1-1/4"
5	BALL VALVE, TRUE UNION	1	PVC	1-1/4"
6	FLEX HOSE, 6" Lg.	1	VINYL CLEAR	1-1/4"
7	BARB x MALE ADAPTER (Mipt)	3	PVC	1-1/4"
8	CAP (Slip)	1	PVC	4
9	CAP (Slip)	1	PVC	8
10	CLOSE NIPPLE (Mipt x Mipt)	1	PVC	1-1/4"
11	PIPE, SCH 40, 2-3/4" Lg.	LENGTH	PVC	1-1/4"
12	NIPPLE THREADED ONE END, 3" Lg.	1	PVC	1-1/4"
13	MALE ADAPTER	1	PVC	1/2"
14	90° ELBOW (Slip x Slip)	1	PVC	1/2"
15	NIPPLE, 2" Lg.	2	PVC	1/2"
16	VACUUM GAUGE (0-30in Hg)	2	STAINLESS STEEL	1/4" ANPT
17	BALL VALVE	1	BRASS	1/2"
18	REDUCING BUSHING (Spig x Fipt)	1	PVC	1/4"
19	45° ELL (Slip x Slip)	1	PVC	1-1/4"
20	TEE, REDUCING (Slip x Slip x Slip)	1	PVC	2" x 2" x 1-1/4"
21	TEE, REDUCING (Slip x Slip x Slip)	1	PVC	3" x 3" x 1-1/4"
22	PIPE, SCH 80	LENGTH	PVC	1-1/4"
23	PIPE, SCH 80	LENGTH	PVC	2" or 3"
24	FEMALE ADAPTER (Slip x Fipt)	1	PVC	1-1/4"
25	HOFFMAN ENCLOSURE, TYPE 4X, MODEL #A-24H160BSS6LP w/ 3-1/4" x 3-1/4" LOUVER, MODEL #A-VK23SS6	1	STAINLESS STEEL	24" x 16" x 8"h
26	REDUCER, BELL	1	BRASS	1/2" x 1/4"
27	HOSE CLAMP, REUSEABLE, 300 SERIES STAINLESS STEEL, MARINE GRADE	2	STAINLESS STEEL	SAE# 24

- NOTES:
1. NUMBER REQUIRED FOR EACH PART IS FOR EACH WELL HEAD.
  2. ALL PIPING INSIDE WELL BOXES IS 1-1/4 INCH SCH 40 PVC EXCEPT WHERE NOTED.
  3. ALL PIPING AND FITTINGS INSIDE WELL BOXES ARE WRAPPED WITH INSULATION AND HEAT TRACED. HEAT TRACE WILL BE COMPATIBLE WITH PVC PIPING.
  4. WELL CAPS ARE NOT TO BE GLUED.

REVISIONS

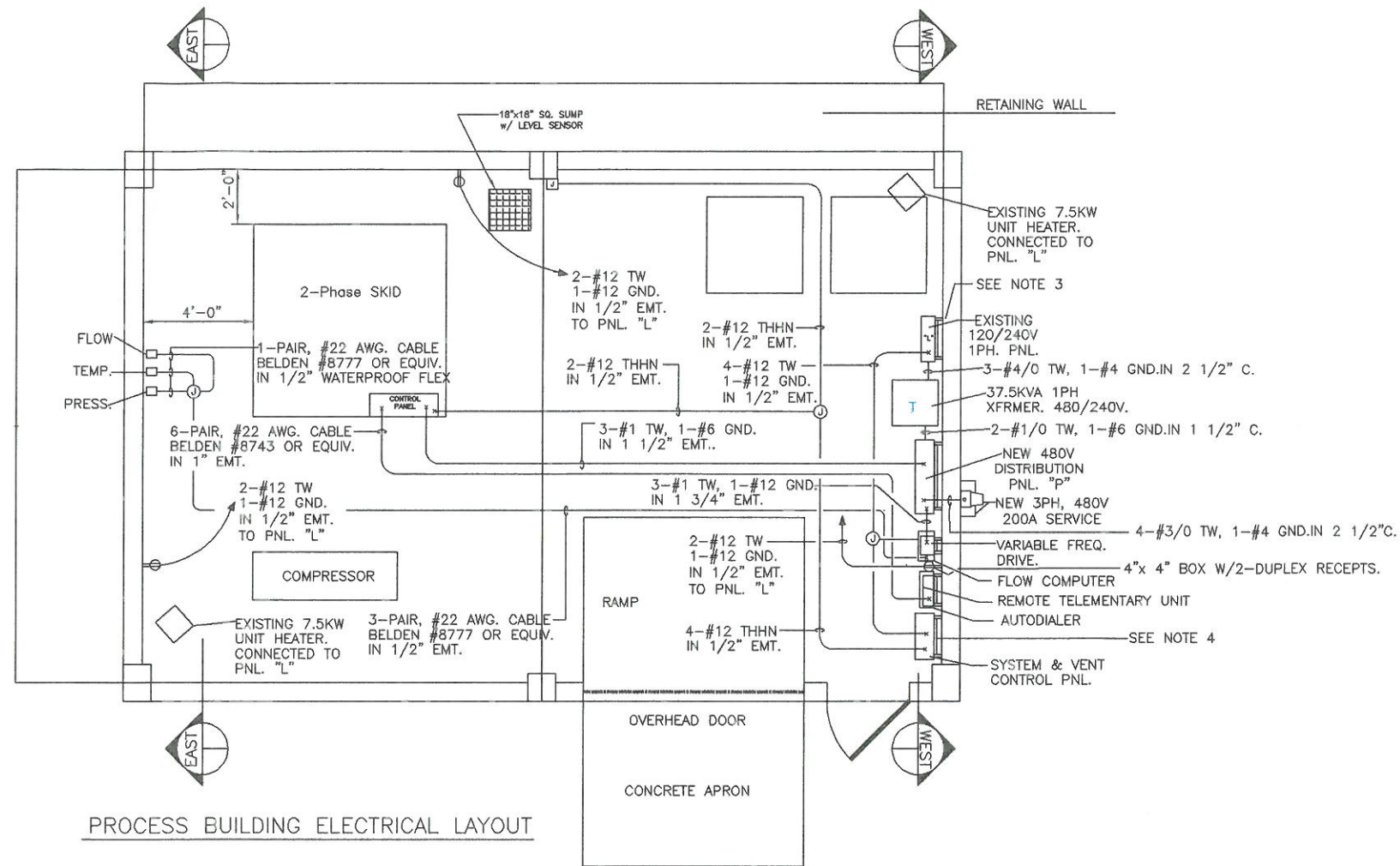
PREPARED FOR  
EMERSON ELECTRIC COMPANY  
8000 W. FLORISSANT  
ST. LOUIS, MO. 63136

SCALE  
1-1/2"=1'0"  
CONFIDENTIAL-ALL RIGHTS RESERVED-PROPERTY OF  
**RADIAN**  
ENGINEERING  
ROCHESTER, NEW YORK 14623

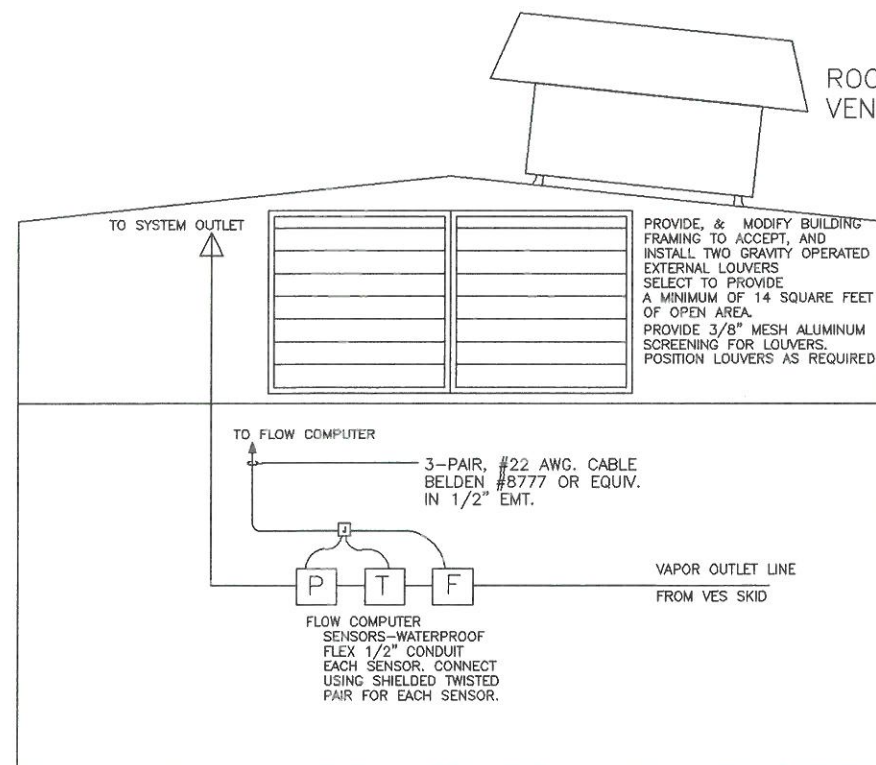
DESIGNED BY  
JCJ  
DATE  
1/3/96  
DRAWN BY  
JAS  
DATE  
1/12/96  
CHECKED BY  
JES  
DATE  
1/15/95  
APPROVED BY  
DATE

DRAWING TITLE  
WELLBOX AND  
WELL HEAD  
DETAILS  
CAD DRAWING FILE: EMER9504.DWG  
CONTRACT NO.  
705-014  
DRAWING NO.  
P-3  
REV.

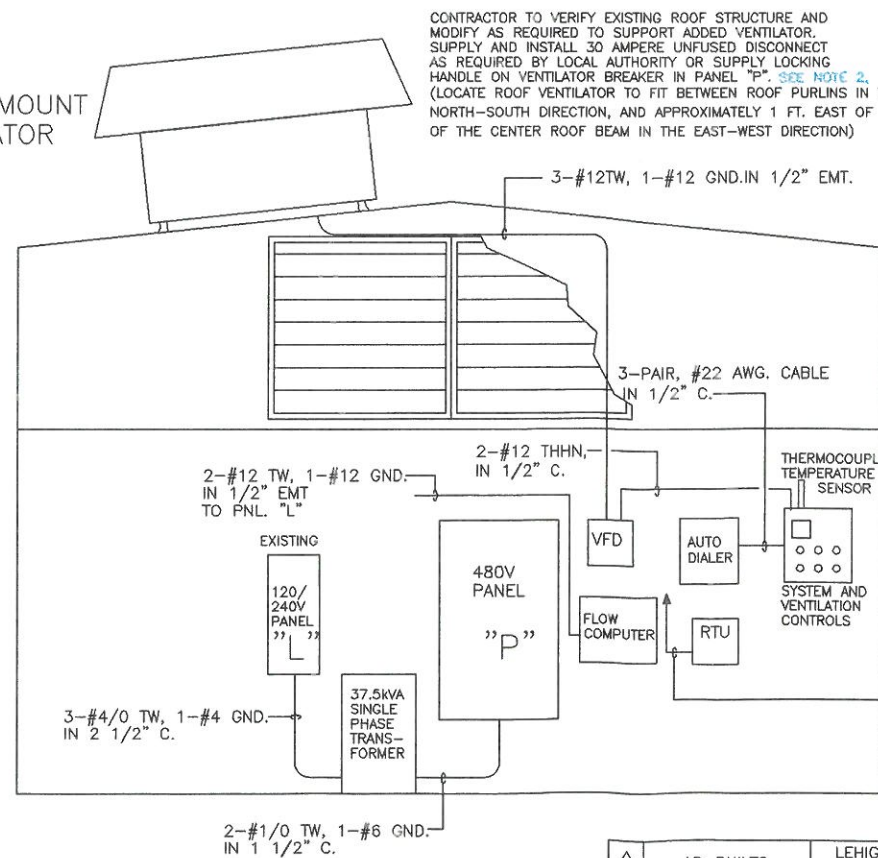




PROCESS BUILDING ELECTRICAL LAYOUT



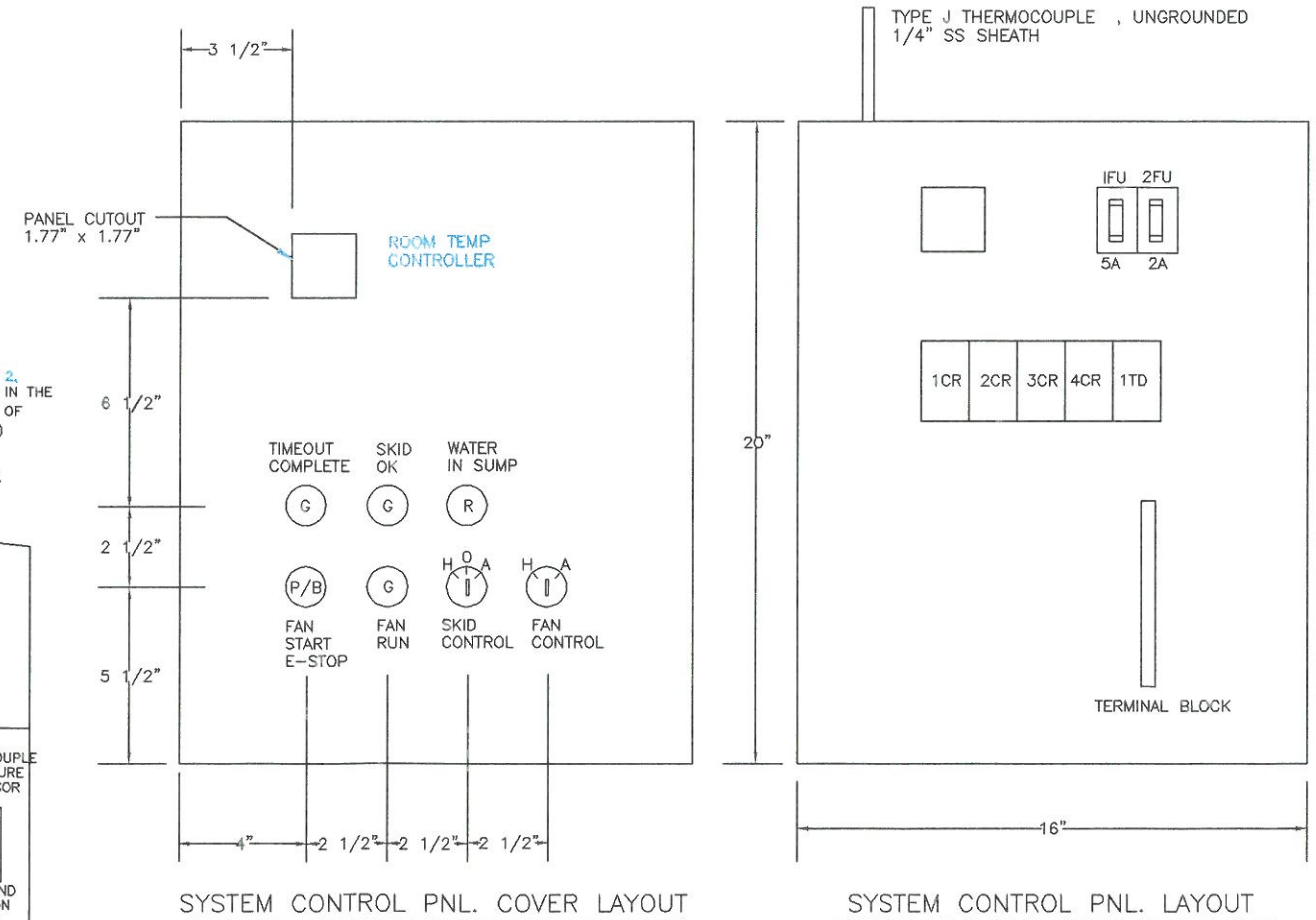
EAST INTERIOR ELEVATION



WEST INTERIOR ELEVATION

## NOTES

1. ROOF-MOUNTED VENTILATOR SHALL BE A HEAVY-DUTY BELT DRIVEN FAN UNIT COMPLETE WITH A CORROSION RESISTANT WEATHER HOUSING, AN APPROPRIATE ROOF CURB, AND A HORIZONTALLY MOUNTED GRAVITY SHUTTER. THE FAN SHALL BE A SLOW SPEED 48" DIAMETER UNIT CAPABLE OF DELIVERING A MINIMUM OF 20,000 SCFM AT A STATIC PRESSURE OF 1/4" WATER COLUMN. THE VENTILATOR SHALL BE EQUIPPED WITH A TOTALLY ENCLOSED NON-VENTILATED THREE-PHASE MOTOR COMPATIBLE WITH THE VARIABLE SPEED DRIVE. AN ACCEPTABLE MODEL IS GRAINGER/DAYTON 7CH17 (WEIGHT.460 LBS.) OR APPROVED EQUIVALENT.
2. REMOVE EXISTING SINGLE PHASE SERVICE, LEAVE IN PLACE 120/240V SINGLE PHASE PNL. "L"
3. ALL PANELS TO BE MOUNTED ON SUPPORTS AWAY FROM WALL.



SYSTEM CONTROL PNL. COVER LAYOUT

SYSTEM CONTROL PNL. LAYOUT

REVISIONS	AS-BUILTS	LEHIGH
		10-2-96

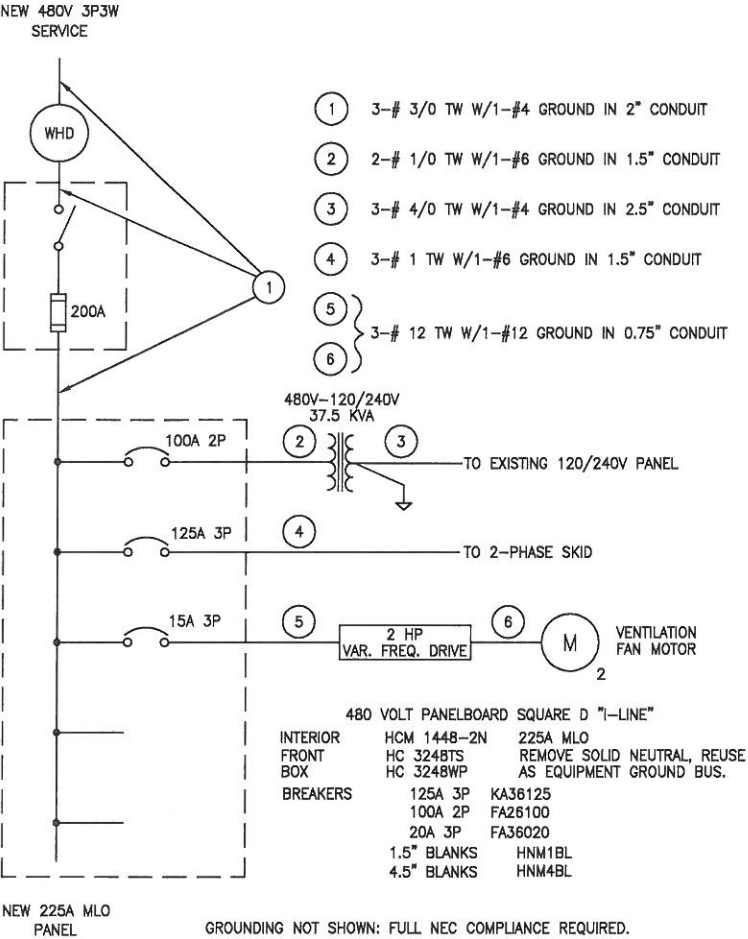
PREPARED FOR  
EMERSON ELECTRIC COMPANY  
8000 W. FLORISSANT  
ST. LOUIS, MO. 63136

SCALE  
N.T.S.  
CONFIDENTIAL-ALL RIGHTS RESERVED-PROPERTY OF  
**RADIAN**  
ENGINEERING  
ROCHESTER, NEW YORK 14623

DESIGNED BY  
JCY  
DATE  
1-15-96  
DRAWN BY  
SHC  
DATE  
1-15-96  
CHECKED BY  
JES  
APPROVED BY  
DATE

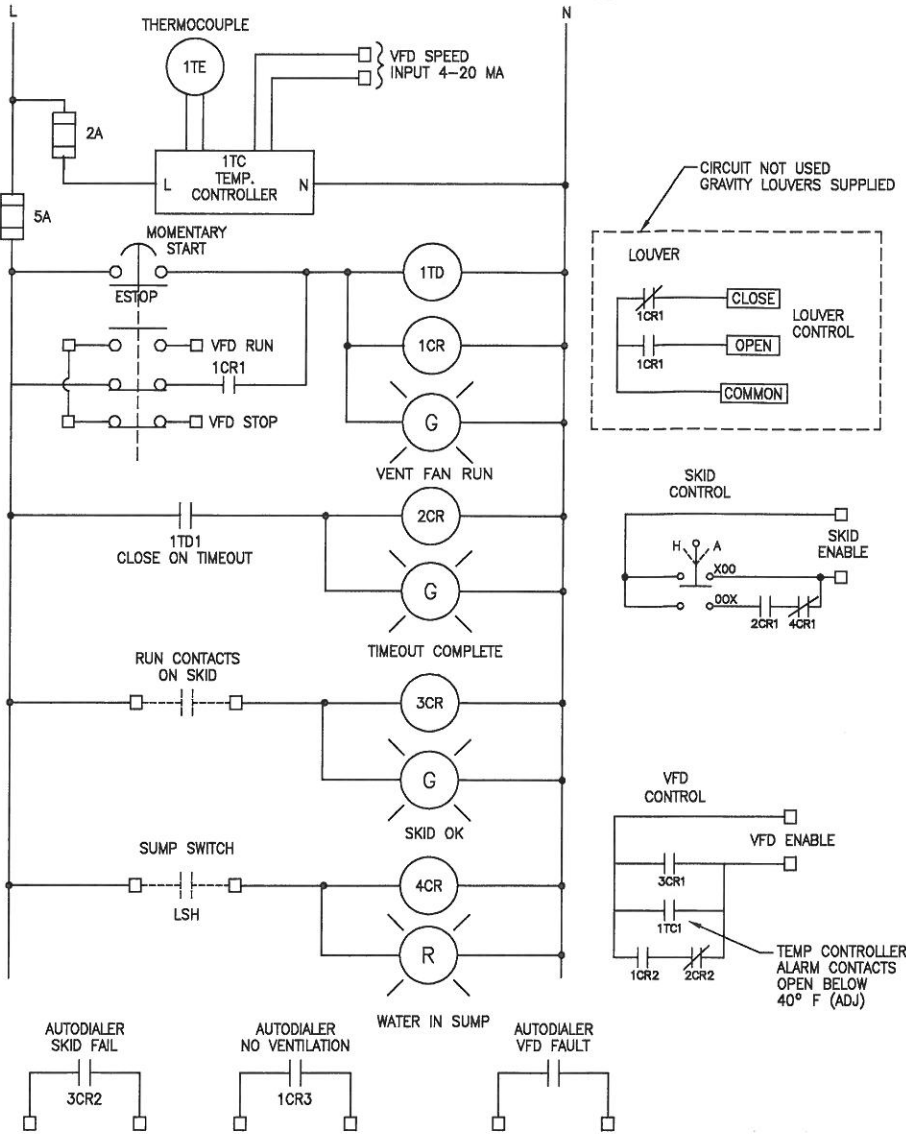
DRAWING TITLE  
PROCESS BUILDING  
ELECTRICAL LAYOUT  
CAD DRAWING FILE: E-1.DWG  
CONTRACT NO.  
705-014  
DRAWING NO.  
E-1  
REV.  
A

SYSTEM ONE-LINE POWER



15 AMPERE CIRCUIT IN EXISTING SINGLE-PHASE PANEL

CONTROL LOGIC



PANEL "L" 120/240 VOLTS SINGLE PHASE 3 WIRE 200A MAIN BREAKER (EXISTING)											
CIRC NO.	TRIP AMPS	NO. POLES	LOAD DESCRIPTION	ODD LOADS		CIRC NO.	TRIP AMPS	NO. POLES	LOAD DESCRIPTION	EVEN LOADS	
				A	B					A	B
1	20	1	RECEPT AT PANEL	360		2	20	1	BLDG RECEPT	360	
3	20	1	RECEPT AT PHONE		360	4	20	1	BLDG RECEPT		360
5	20	1	SPARE			6	20	1	SYSTEM CONTROL	100	
7	20	2	SUMP PUMP	480	480	8	20	1	LIGHTS		1200
9	20	2	(FUTURE)	480		10	20	1	SPARE		
11	60	2	UNIT		3750	12	60	2	AIR	3750	
13	60	2	HEATER #1	3750		14	60	2	COMPRESSOR		3750
15	60	2	UNIT		3750	16					
17	60	2	HEATER #2	3750		18					
19	30	2	2 KW HEAT TAPE #1	1000	1000	20					
21	30	2	2 KW HEAT TAPE #2	1000	1000	22					
23	30	2	2 KW HEAT TAPE #1	1000	1000	24					
25	30	2	2 KW HEAT TAPE #2	1000	1000	26					
27	30	2	1.2 KW HEAT TAPE	600	600	28					
29	30	2	TAPE	600		30					
ODD LOADS				10940	10940					4210	5310
EVEN LOADS				4210	5310						
CONNECTED LOAD, VA				15150	16250						
ESTIMATED DEMAND, VA				10560	11600						

THREE-PHASE POWER AT 480 VOLTS						
	CONNECTED LOAD			ESTIMATED DEMAND		
PHASE:	A	B	C	A	B	C
ITEM						
37.5 KVA SINGLE PHASE TRANSFORMER	78A	78A		46.2A	46.2	
TWO-PHASE PACKAGED SKID	85A	85A	85A	75A	75A	75A
VENTILATION	4A	4A	4A	3.6A	3.6A	3.6A
AMPERES/PHASE	167A	167A	89A	125A	125A	78.5A
VA/PHASE	45,260VA	45,260VA	24,650VA	34,625VA	34,625VA	21,745VA
kVA	115.2 kVA			91.0 kVA		

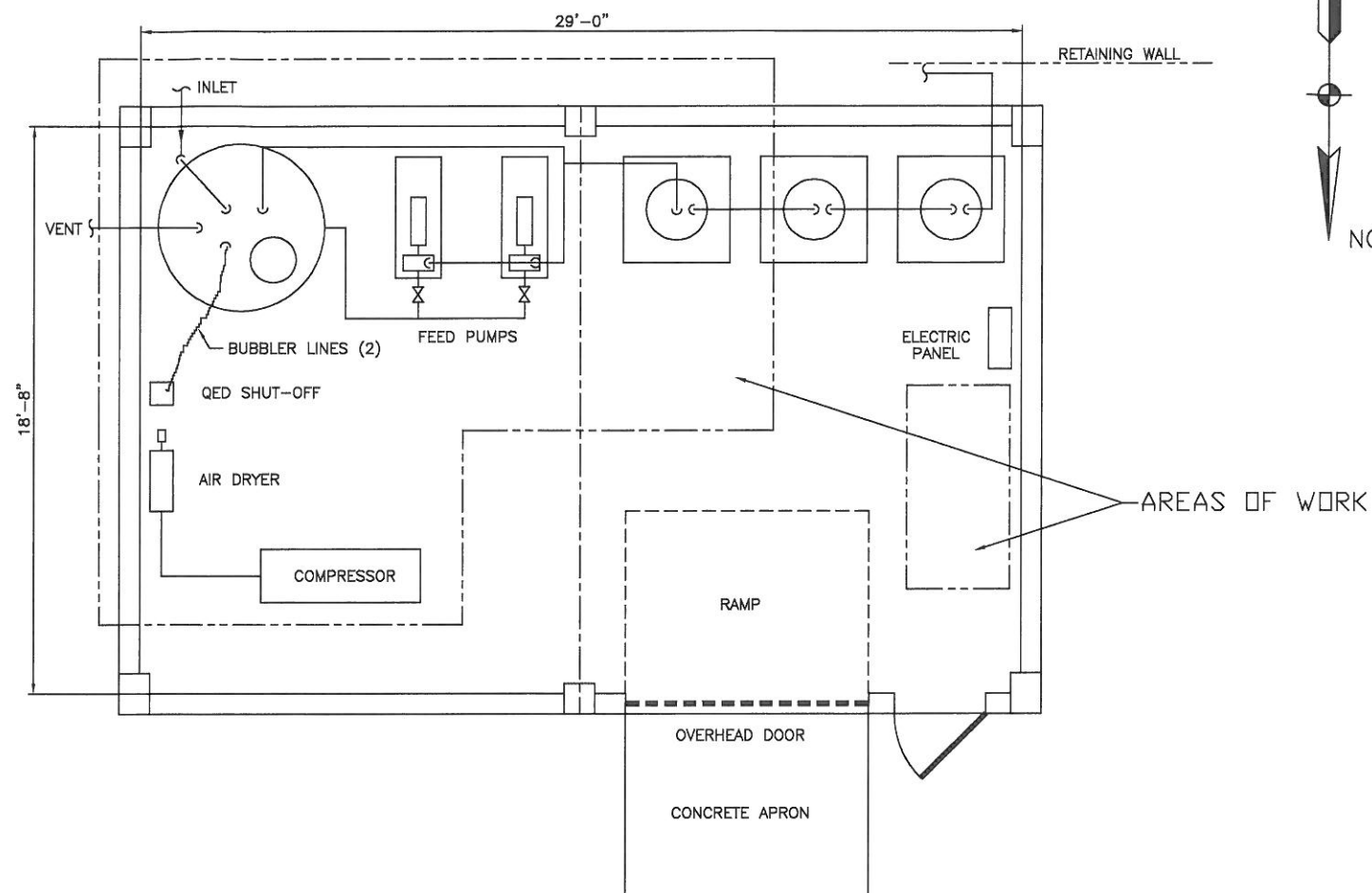
NOTES

- REMOVE PRESENT SINGLE-PHASE SERVICE. RESUPPLY EXISTING 120/240V SINGLE-PHASE PANEL FROM NEW 37.5 KVA SINGLE-PHASE TRANSFORMER. CIRCUITS TO LIGHTING, HEATING, AIR COMPRESSOR, AIR DRYER, AND EXISTING CONVENIENCE RECEPTACLES TO REMAIN. REMOVE REMAINING CIRCUITS.  
ADD NEW CIRCUITS FOR FLOW COMPUTER, TELEPHONE DIALER, REMOTE TELEMETRY UNIT, TWO NEW CONVENIENCE RECEPTACLE CIRCUITS, AND DAMPER CONTROL CIRCUIT.
- GROUNDING/BONDING: BOND TRANSFORMER NEUTRAL TO BUILDING STEEL, SERVICE, AND EXISTING GROUND SYSTEM. INSTALL EQUIPMENT GROUNDING CONDUCTOR PER NEC ARTICLE 250 IN ALL CIRCUITS.
- VARIABLE FREQUENCY DRIVE SHALL BE RATED FOR A MINIMUM OF 2 Hp, 480V, AND SHALL BE EQUIPPED WITH 4-20 MILLIAMPERE INPUT FOR SPEED CONTROL, DRIVE ENABLE INPUT FOR REMOTE CONTROL, DRIVE RUN DRY CONTACT OUTPUT TO INDICATE RUNNING AT SPEED, AND DRIVE FAULT DRY CONTACT OUTPUT TO INDICATE DRIVE FAULTED. DRIVE SHALL HAVE A FULL OPERATOR PANEL TO ACCESS ALL FEATURES OF THE DRIVE. DRIVE MAY BE AN ALLEN-BRADLEY 1305-BA04A WITH INTERFACE MODULE 1201-HA2 OR AN APPROVED EQUIVALENT.
- TEMPERATURE CONTROLLER SHALL BE AN OMRON MODEL E5CX-CTC-F OR APPROVED EQUIVALENT. THERMOCOUPLE SHALL BE A TYPE J UNIT WITH 12" LONG 1/4" DIAMETER INSULATED SHEATH CONSTRUCTION AND SHALL BE MOUNTED SO THAT THE PROBE TIP EXTENDS A MINIMUM OF 8" FROM THE CONTROL CABINET.
- SUMP FLOAT SWITCH SHALL BE A FLEXIBLE TETHERED CORD MECHANICAL TYPE MOUNTED IN THE SUMP SO AS TO CLOSE THE CIRCUIT WHEN 4-6 INCHES OF LIQUID IS DETECTED. THE SWITCH MAY BE A W.W. GRAINGER CATALOG 2P313 OR 2P055 OR APPROVED EQUIVALENT.

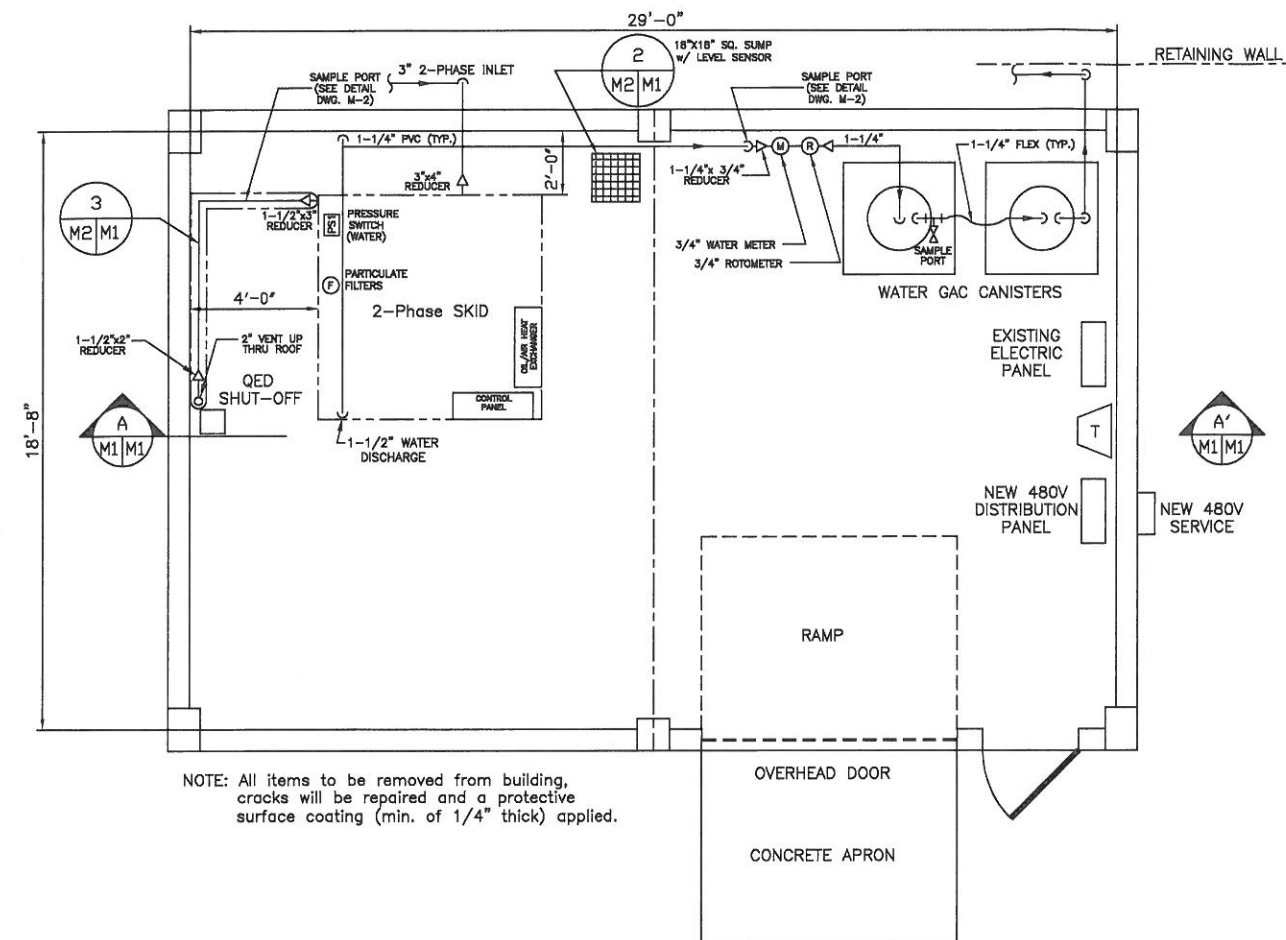
EQUIPMENT SCHEDULE			
DESCRIPTION	MANUFACTURER	QTY.	SUPPLY
SYSTEM CONTROL PANEL	HOFFMAN #A-201608LP & A-20P16 OR EQUIV.	1EA.	CONTRACTOR
TEMP. CONTROLLER (1TC)	OMRON #E5CX-CTC-F OR EQUIV.	1	CONTRACTOR
TIME DELAY RELAY .1 - 10 MIN. (1TD)	SQUARE-D #JCK15V20 OR EQUIV.	1	CONTRACTOR
3-POLE RELAY 1CR, 2CR, 3CR, 4CR	SQUARE-D #KP13V20 OR EQUIV.	4	CONTRACTOR
RELAY SOCKET	SQUARE-D #NR61	5	CONTRACTOR
120V PUSH TO TEST RED PILOT LIGHT	SQUARE-D #KT1R31	1	CONTRACTOR
120V PUSH TO TEST GREEN P/LIGHT	SQUARE-D #KT1G31	3	CONTRACTOR
3-POS START-STOP MUSHROOM P/B	SQUARE-D #XB2 BN422	1	CONTRACTOR
HAND-OFF-AUTO SEL. SW.	SQUARE-D #KS43BH13	1	CONTRACTOR
37.5KVA XFMR. 480-120/240V 1PH.	SQUARE-D #375SH OR EQUIV.	1	CONTRACTOR
V.F.D 480V 2HP. W/HUMAN-INTERFACE MODULE	ALLEN BRADLEY #1305-BA04A-HA2	1	RADIAN
VAPOR FLOWMETER	ENDRESS & HAUSER #DV6312	1	RADIAN
FLOW COMPUTER	ENDRESS & HAUSER #6351	1	RADIAN
PRESS. SENSOR	PMC 133	1	RADIAN
TEMP. SENSOR	T-TEC-100	1	RADIAN
AUTO DIALER	PHONETICS	1	RADIAN
REMOTE TELEMETRY UNIT	CAMPBELL SCIENTIFIC	1	RADIAN
480V PNL. BD. W/CKT. BRKRS.	SQUARE-D "I-LINE" AS SHOWN ON ONE LINE	1	CONTRACTOR
200A FUSIBLE SAFETY SWITCH	SQUARE-D H364RB	1	CONTRACTOR

REVISIONS	AS-BUILTS	LEHIGH
		10-2-96

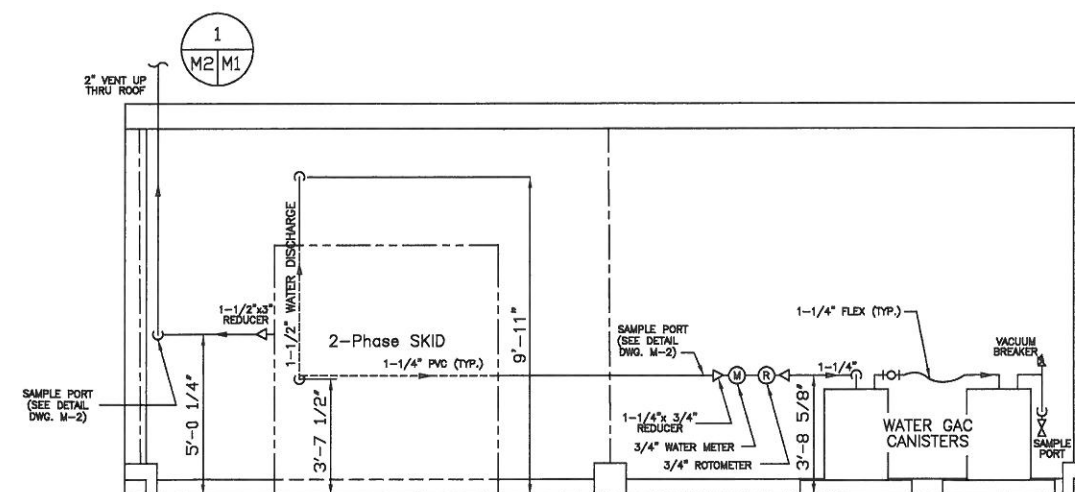
PREPARED FOR	SCALE	DESIGNED BY	DATE	DRAWING TITLE	
EMERSON ELECTRIC COMPANY 8000 W. FLORISSANT ST. LOUIS, MO. 63136	N.T.S.	JCY	1-15-96	PROCESS BUILDING ELECTRICAL ONE-LINE	
		ISSUED BY	DATE	CAD DRAWING FILED E-62MG	
		SHC	1-15-96		
		CHECKED BY	DATE		
		JES			
		APPROVED BY	DATE		
				705-014	E-2 A



EXISTING IRM TREATMENT  
SYSTEM FLOOR PLAN



2-PHASE EXTRACTION  
SYSTEM FLOOR PLAN



SECTION A-A'

AS-BUILTS	LEHIGH
	10-2-96
REVISIONS	

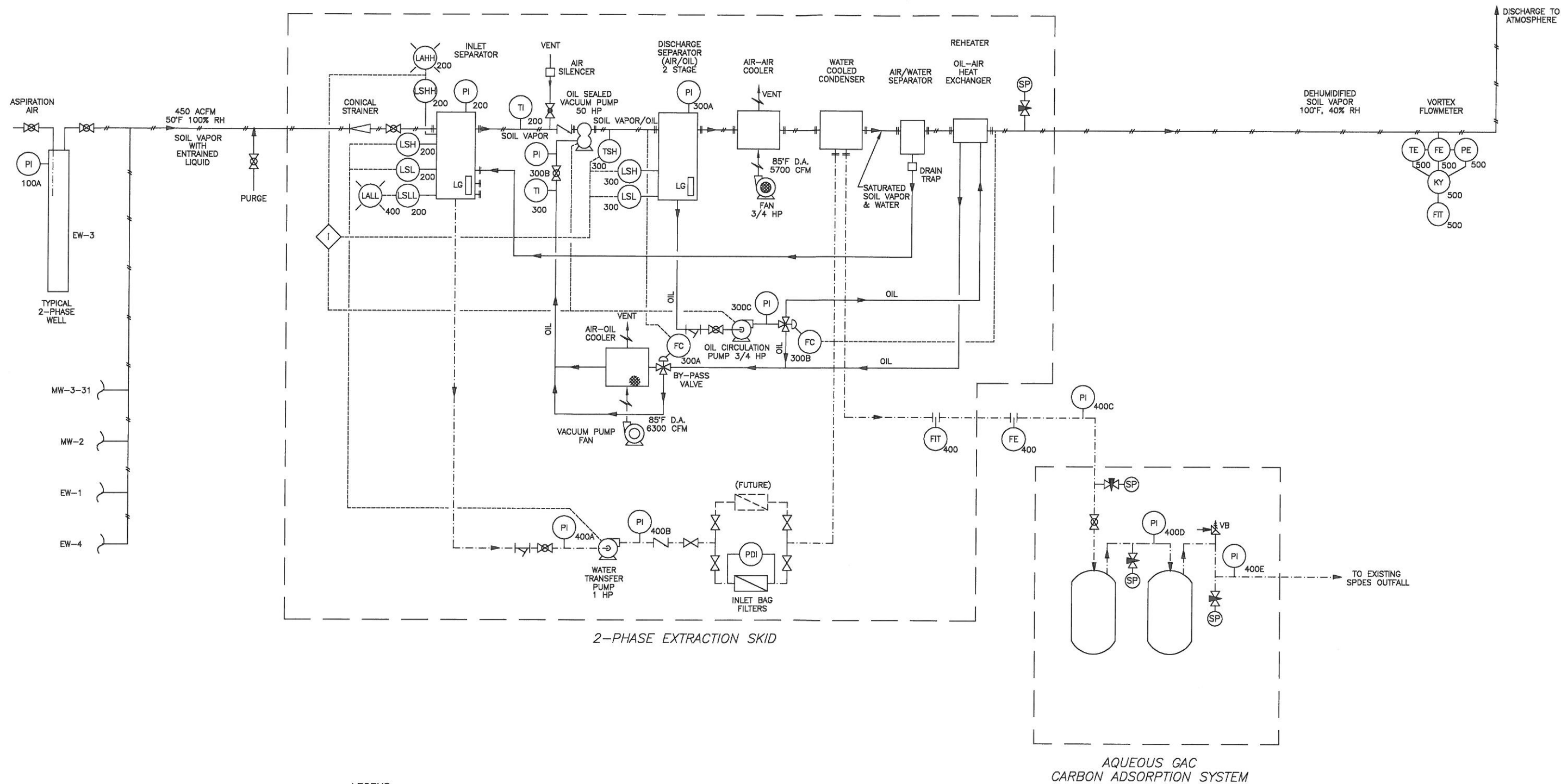
PREPARED FOR  
EMERSON ELECTRIC COMPANY  
8000 W. FLORISSANT  
ST. LOUIS, MO. 63136

SCALE  
1"=3'-0"  
CONFIDENTIAL-ALL RIGHTS RESERVED-PROPERTY OF  
**RADIAN**  
ENGINEERING  
ROCHESTER, NEW YORK 14623

DESIGNED BY  
JCY  
DATE  
1/3/96  
DRAWN BY  
JAS  
DATE  
1/12/96  
CHECKED BY  
JES  
DATE  
1/15/96  
APPROVED BY  
DATE

DRAWING TITLE  
PROCESS BUILDING  
EQUIPMENT LAYOUT  
CAD DRAWING FILED EMERSON.DWG  
CONTRACT NO.  
705-014  
DRAWING NO.  
M-1  
REV.  
A





△	
△	
REVISIONS	

PREPARED FOR  
EMERSON ELECTRIC COMPANY  
8000 W. FLOISSANT  
ST. LOUIS, MO. 63136

SCALE  
NONE  
CONFIDENTIAL-ALL RIGHTS RESERVED-PROPERTY OF  
**RADIAN**  
ENGINEERING  
ROCHESTER, NEW YORK 14623

DESIGNED BY JCY	DATE 1/3/96
DRAWN BY JAS	DATE 1/12/96
CHECKED BY JES	DATE 1/15/96
APPROVED BY	DATE

DRAWING TITLE PROCESS AND INSTRUMENTATION DIAGRAM	
CAD DRAWING FILE: EMER9003.DWG	REV.
CONTRACT NO. 705-014	DRAWING NO. I-1