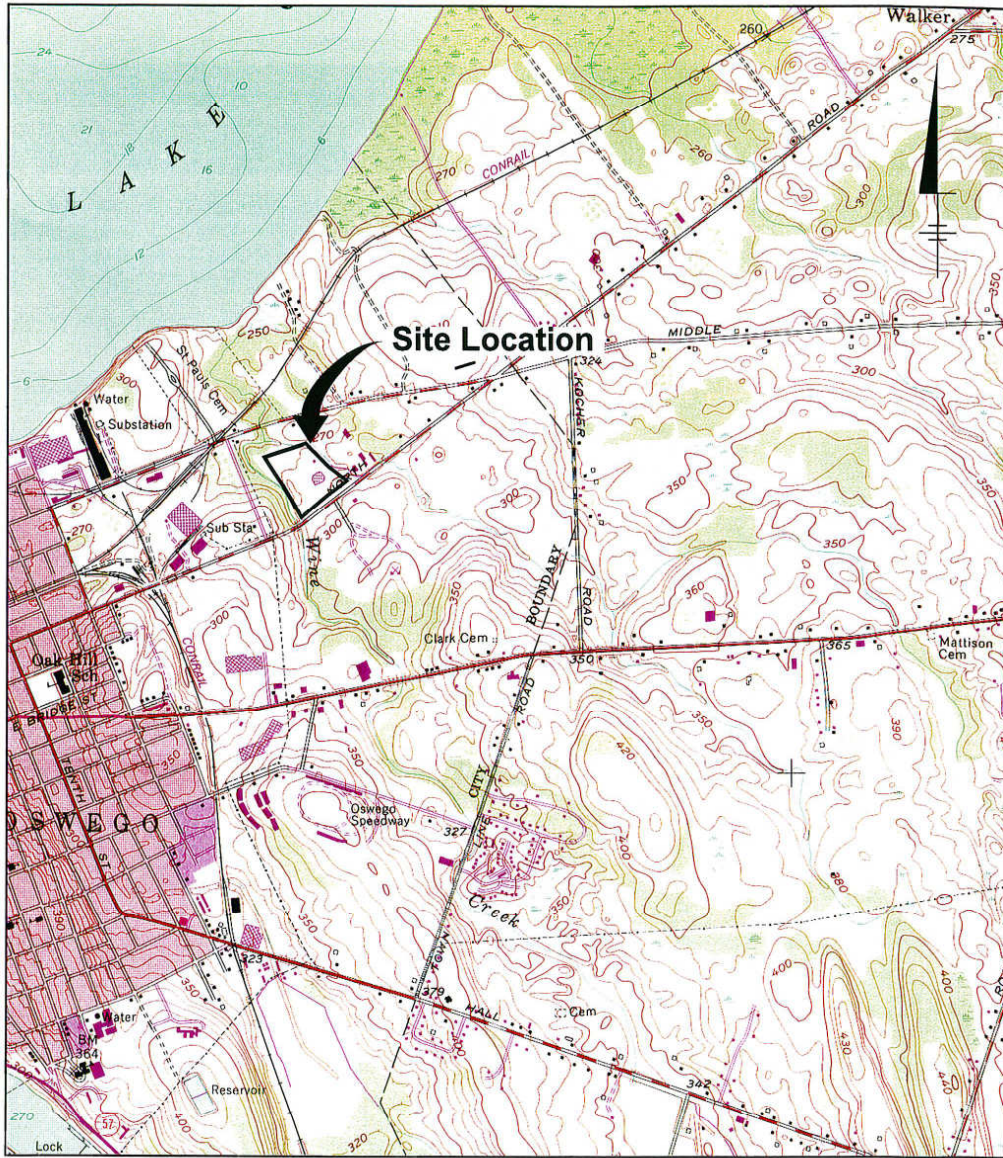
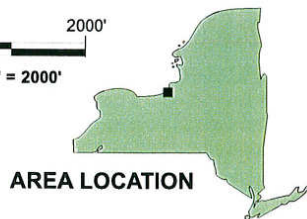
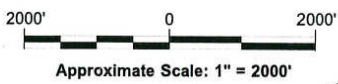


**Attachment 1: Figures**

**Figure 1: Site Location Map**



REFERENCE: BASE MAP USGS QUAD., OSWEGO EAST, NY, 1978.



POLLUTION ABATEMENT SERVICES SITE  
OSWEGO, NEW YORK  
OPERATION AND MAINTENANCE AND  
LONG-TERM MONITORING PLAN

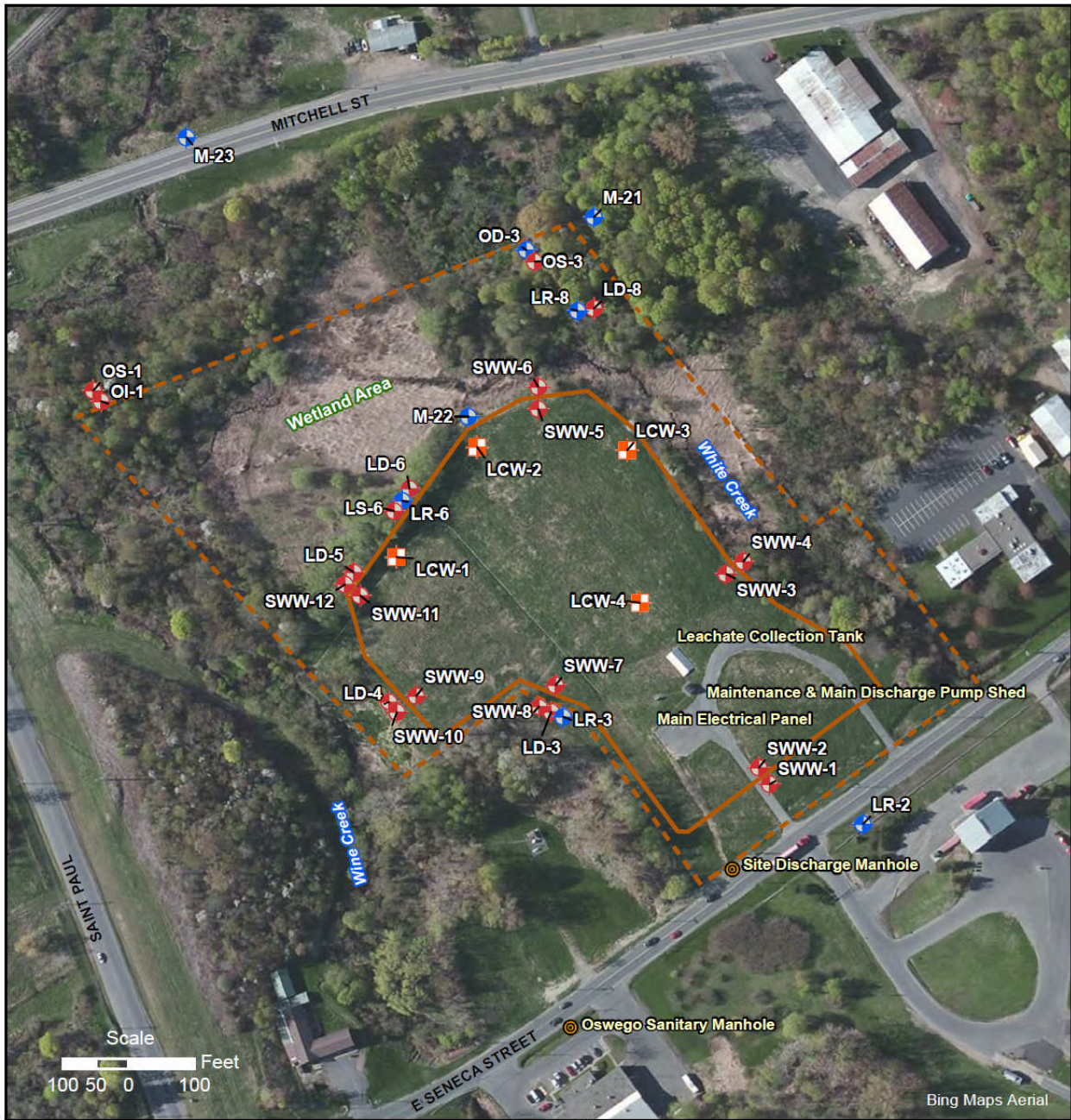
### SITE LOCATION MAP

**BBL** BLASLAND, BOUCK & LEE, INC.  
engineers & scientists

FIGURE  
**1**

**Figure 2: Site Plan and Well Location Map**





LEGEND	
<b>Sample Locations</b>	
	Bedrock Monitoring Well
	Leachate Collection Well (Overburden)
	Overburden Monitoring Well
	Manhole
	Fence (Site Boundary)
	Slurry Wall

**EXISTING SITE WELLS**  
PAS Site, Oswego, New York

Project No.: 3131  
 Plot Date: 4 May 2012  
 Arc Operator: BJAR  
 Reviewed by:

**Figure 1**  
  
 1217 Bandana Boulevard North  
 Saint Paul, Minnesota 55108  
 Main Phone: (651) 942-4224  
 www.ddmsinc.com

**Figure 3: Sampling Locations in White and Wine Creeks**

CITY OF OSWEGO, NY: 100 N. MAIN STREET, 2ND FLOOR, OSWEGO, NY 13127  
 PROJECT: PCB LONG-TERM MONITORING DATA REPORT  
 DATE: 10/15/2010  
 DRAWN BY: J. B. WILSON  
 CHECKED BY: J. B. WILSON  
 APPROVED BY: J. B. WILSON  
 SCALE: AS SHOWN  
 SHEET: 1 OF 1

