



Department of
Environmental
Conservation

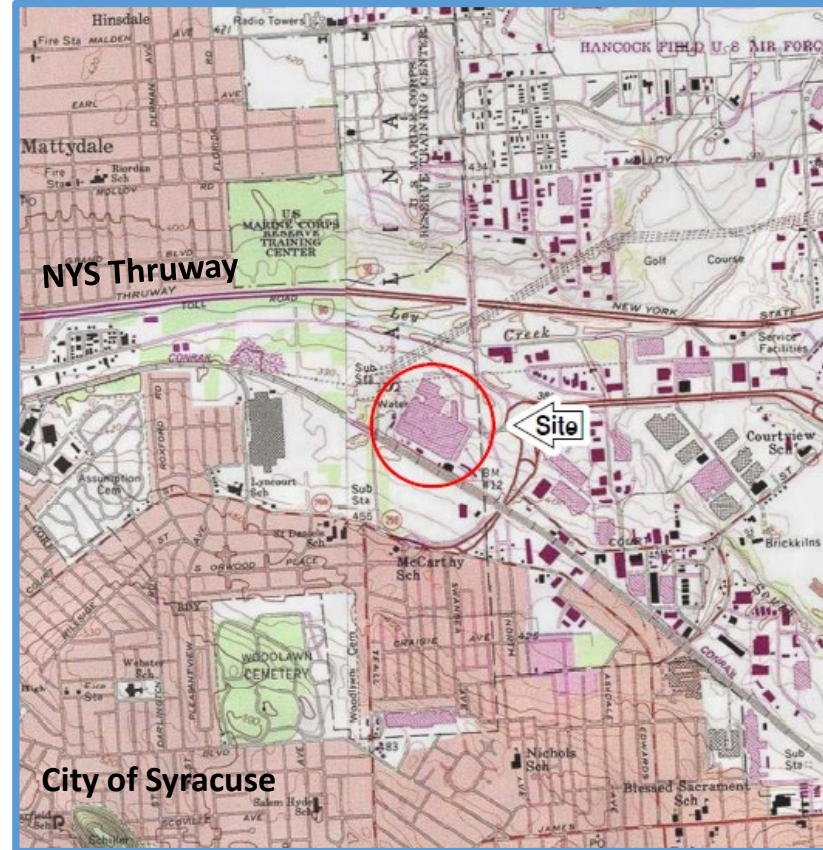
General Motors – Inland Fisher Guide Operable Unit 01 Proposed Plan

Jacky Luo
NYSDEC Project Manager

August 16, 2023

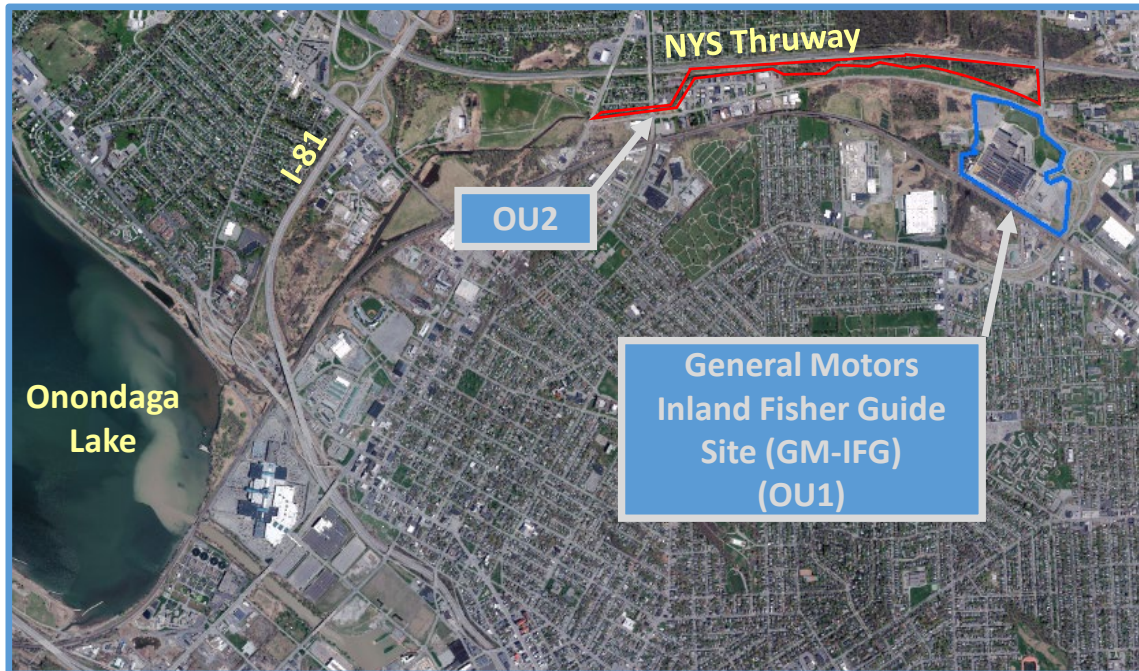
Presentation Outline

1. Background
 - Site History
 - Site Contaminants
 - Interim Remedial Measures
2. Cleanup Options Evaluated
3. Preferred Remedy
4. NYSDOH Role
5. Next Steps



Site Background

- GM-IFG is Subsite of Onondaga Lake National Priorities List site.
- Site has two Operable Units: OU1 and OU2.
- **OU1: Addresses the former facility and on- and off-property contaminated groundwater.**
- OU2: addresses off-property contaminated sediments and floodplain soils.



Site Background, Cont'd

- Approximately 65-acre parcel.
- 800,000 square foot former manufacturing building.
- Ley Creek north of site.
- Groundwater flows north towards Ley Creek.



Site History

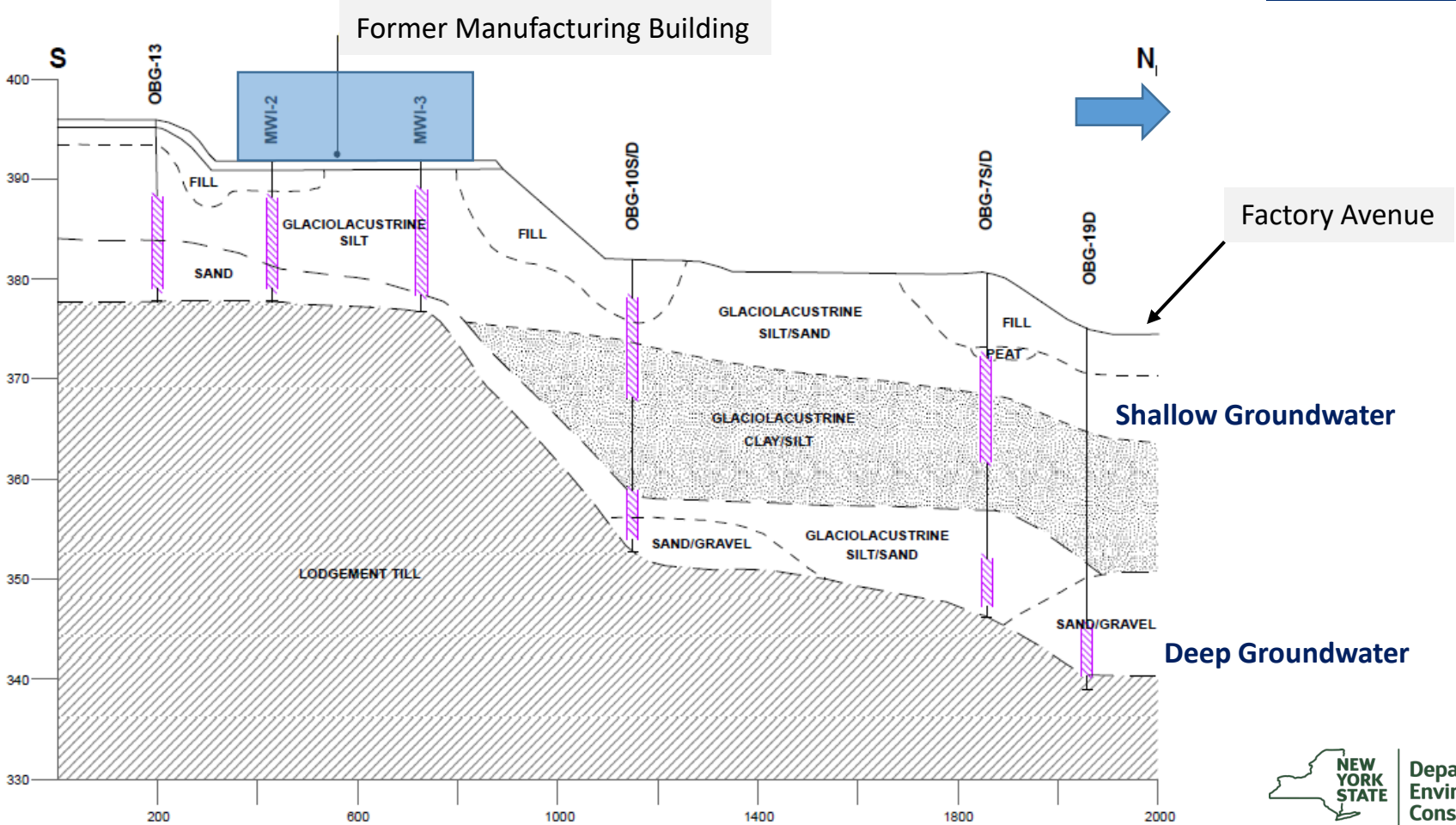
- 1952-1993 - GM operations occurred at the facility property.
- 1997 - Facility cleanup program started.
- 2009 - GM filed for bankruptcy.
- 2011 - Revitalizing Auto Communities Environmental Response Trust (RACER) took over the site.
- 2020 - The property was sold to SIP Syracuse LLC.



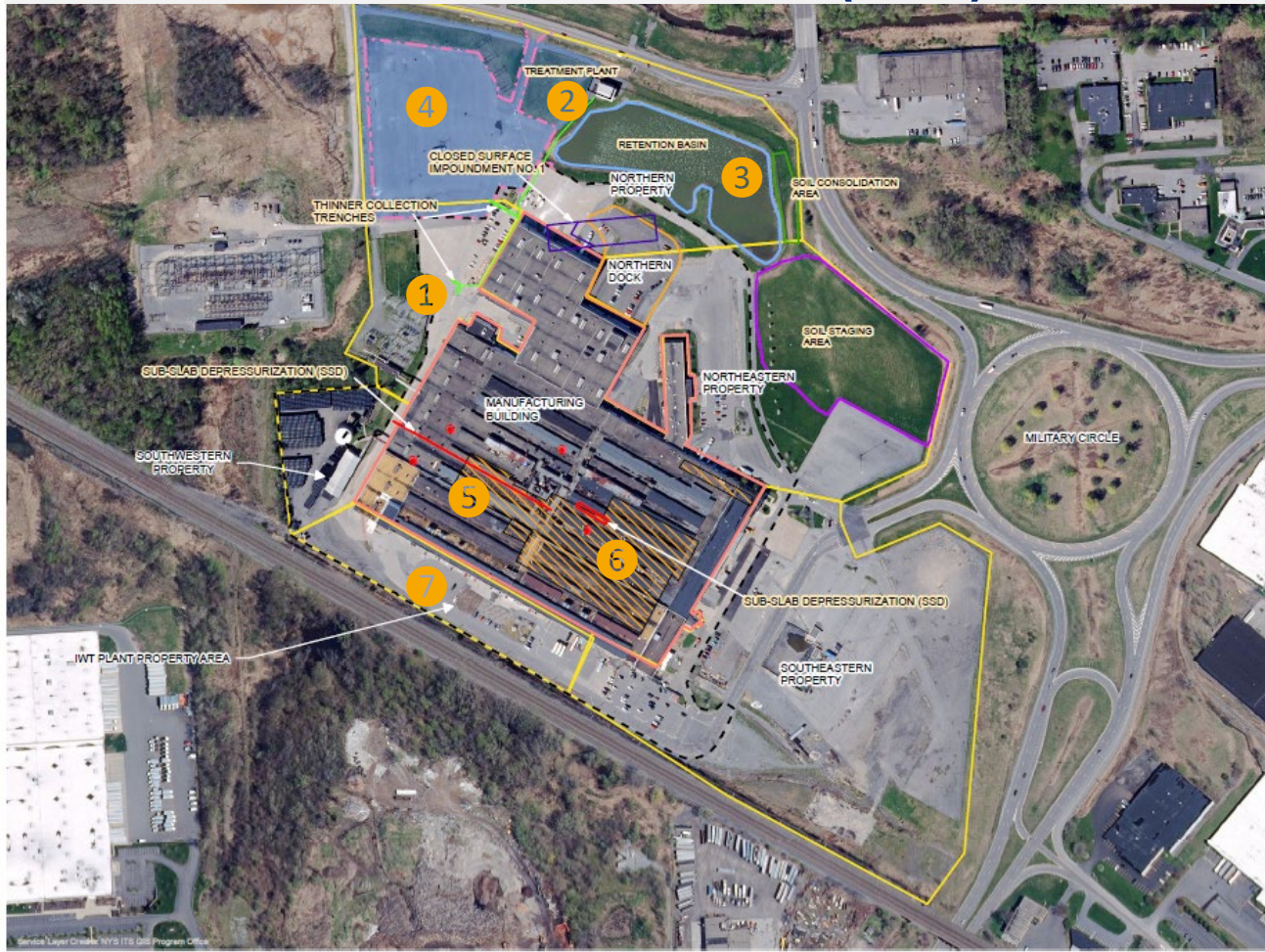
Contaminants of Concern

- Volatile Organic Compounds (VOCs) (e.g., trichlorethylene, xylene, toluene, etc.)
- Semi Volatile Organic Compounds (SVOCs)(e.g., benzo(a)anthracene, chrysene, etc.)
- Metals (e.g., arsenic, chromium, etc.)
- Polychlorinated Biphenyls (PCBs)





Interim Remedial Measures (IRM)



1. Former Thinner Tank Area Groundwater Recovery System
2. SPDES Treatment System IRM
3. Former Drainage Swale IRM
4. Former Landfill IRM
5. Vapor Intrusion Mitigation IRM (Sub-Slab Depressurization)
6. Decommissioning Activities
7. Redevelopment IRMs

PROJECT: 150879599 | DATED: 4/17/2021 | REGION: COOPERIA
Service Layer Credits: NYS ITS Call Program Office

Remedial Action Objectives

- 1) Prevent ingestion/direct contact with contaminated soil/fill material.
- 2) Prevent inhalation of or exposure to contaminants volatilizing from contaminants in soil/fill material.
- 3) Prevent ingestion of groundwater with contaminant levels exceeding drinking water standards.
- 4) Restore groundwater to levels that meet state and federal standards.
- 5) Prevent contact with, or inhalation of, volatiles from contaminated groundwater.
- 6) Prevent the discharge of contaminants to surface water and sediment in Ley Creek.
- 7) Prevent contaminants in soil/fill material from impacting groundwater above drinking water standards.

Evaluation Criteria

1. Overall Protection of Human Health and the Environment
2. Compliance with Applicable or Relevant and Appropriate Requirements

3. Long-term Effectiveness and Permanence
4. Reduction of Toxicity, Mobility or Volume through Treatment
5. Short-term Effectiveness
6. Implementability
7. Cost Effectiveness
8. State Acceptance
9. Community Acceptance



Alternative	Description	Total Present Cost
#1	No Further Action	\$0
#2	Perimeter and Targeted Shallow Groundwater Collection; Perimeter and Targeted Deep Groundwater Extraction and Treatment; and Soil Excavation and Disposal	\$9 Million
#3	Targeted Shallow Groundwater Collection; Perimeter and Targeted Deep Groundwater Extraction and Treatment; Soil Excavation and Disposal	\$7.3 Million
#4	In-Situ Treatment of Residual Source Areas; Perimeter Deep Groundwater Extraction and Treatment; Soil Excavation and Disposal	\$22 Million
#5	In-Situ Treatment of Residual Source Areas; Perimeter Shallow Groundwater Collection and Treatment; Perimeter Deep Groundwater Extraction and Treatment; Soil Excavation and Disposal	\$26 Million

Preferred Alternative 4

- In-Situ (in-place) treatment of three residual source areas
- Perimeter deep groundwater extraction with treatment
- Sub slab depressurization system evaluation.
- Soil excavation and disposal
- Development of a Site Management Plan



Role of the NYS Department of Health

- Work with NYSDEC to identify nature and extent of contamination to evaluate potential exposures
- Evaluate data and make recommendations to address any potential exposure and evaluate the need for additional information
- Ensure that remedy selected is protective of public health

What is exposure?

- Physical contact with a chemical or substance
 - Inhalation (breathing)
 - Direct contact (touching)
 - Ingestion (eating/drinking)
- One or more of these physical contacts must occur before a chemical has the *potential* to cause a health problem
- Exposure does not necessarily mean that health effects will occur

Potential Exposure Pathways

Inhalation

Direct Contact

Ingestion

Next Steps

Activity	Estimated Time
Public Comment Period	July 28, 2023 – August 27, 2023
Issue Record of Decision based on accepted remedy	September 2023
Begin Remedial Design	Late 2023
Remedial Construction	2024 - 2025

Thank You

Jacky Luo

Project Manager

NYSDEC

625 Broadway, 12th Floor

Albany, NY 12233-7013

E-mail: Jacky.Luo@dec.ny.gov

Phone: (518) 402-9549

Mark Sergott, P.G.

Public Health Specialist

Bureau of Environmental Exposure
Investigation

Empire State Plaza, Corning

Tower, Room 1787

Albany, NY 12237

E-mail: bee@health.ny.gov

Phone: (518) 402-7860



Department of
Environmental
Conservation