

CITIZEN PARTICIPATION PLAN

Accurate Die Casting Site

ID NUMBER 7-34-052

Village of Fayetteville, Onondaga County, NY

December 1993

**Prepared by
New York State
Department of Environmental Conservation
Division of Hazardous Waste Remediation**

TABLE OF CONTENTS

SECTION

1.0	Introduction
2.0	Site Background Information
3.0	Project Objective
4.0	Citizen Participation Activities
5.0	Contact List
6.0	Company and Regulatory Agency Contacts
7.0	Document Repositories
8.0	Glossary of Terms & Major Program Elements
9.0	Figures, Maps and Appendices
	Figure 1 - Site location map (topo map)
	Figure 2 - Site map
	Figure 3 - RI/FS Project Schedule
	Appendix A

1.0 INTRODUCTION

The New York State Department of Environmental Conservation (NYSDEC), in partnership with the New York State Departments of Health (NYSDOH) and Law (NYSDOL), is responsible for seeing that hazardous waste sites across the state are investigated and, if necessary, remediated. Under the State's Hazardous Waste Site Remedial Program, the process follows a path of thorough investigation, enforcement, remedial action selection, design, and construction. Throughout this process, the NYSDEC conducts a citizen participation program.

In many instances, the NYSDEC is able to identify and enter into legal agreements with companies who owned or operated, or currently own or operate the facility identified as a hazardous waste site. These companies are called Potentially Responsible Parties, or PRPs.

In cases where PRPs cannot be identified, are no longer in existence, or are not financially capable, the State conducts remedial activities under funding from the 1986 Environmental Quality Bond Act (EQBA). Sites conducted with EQBA funds are commonly called State "Superfund" sites. The investigations at the Accurate Die Casting site is being funded by the PRP.

Citizen participation is aimed at increasing public understanding of NYSDEC and NYS DOH's responsibilities and the remedial activities at the site. The citizen participation program also opens up two-way communication, thus providing 1) an opportunity for NYSDEC and NYS DOH to obtain site information from you that will enable us to develop a comprehensive remedial plan which is protective of both public health and the environment, and 2) a mechanism for us to learn your concerns and answer your questions about the site and the remedial process.

2.0 SITE BACKGROUND INFORMATION

The Accurate Die Casting site is located on a 32-acre parcel at East Genesee street in the Village of Fayetteville, Onondaga County, New York (Figure 1). The site is located in a mixed residential/industrial neighborhood. The site includes parking areas adjacent to the main building, a wooded area to the north, scrub growth to the east, and a lawn to the south. The topography is generally flat on the south end of the site and slopes to the north on the north half of the site. At the northern edge of the property, there is a steep embankment adjacent to the Bishop Brook, which flows from east to west. The Site is bordered by an abandoned farmland on the north, residential areas on the east and west, and commercial properties on the south along Genesee Street. An abandoned railroad siding extends along the western border of the property, acting as a buffer between the site and adjacent parcels. The facility was used as a die casting operation from its construction in the 1950s until its abandonment in 1988. The leakage of trichloroethylene (TCE) from bulk storage tanks located on the property contributed primarily to the contamination at the site.

3.0 PROJECT OBJECTIVE

A Remedial Investigation/Feasibility Study (RI/FS) is conducted at a site once the presence of hazardous waste contamination has been confirmed. The RI determines the

nature and extent of contamination through a series of sampling activities, which may include sampling of soils, air, sediments, surface water, and groundwater. Data gathered in the RI is used in the FS to develop a list of potential remedial alternatives.

The purposes of the RI/FS at the Accurate Die Casting site are:

- * To assess the nature and extent of contamination in soil, sediment and groundwater at the site.
- * To identify the potential exposure pathways and the potential health and/or environmental receptors needed to determine Remedial Action Objectives (RAOs).
- * To evaluate and select an appropriate remedial action for the site that is protective of human health and the environment.

3.1 PROJECT DESCRIPTION

A phase I Remedial Investigation (RI) was conducted by the Potentially Responsible Party (PRP) showed contamination in soil, groundwater, and sediment. The PRP has entered into a legal agreement with the NYSDEC to perform a full scale RI/FS. The following three Interim Remedial Measures (IRM) were implemented at the site during the investigation: a) approximately 100 drums were characterized, removed from the building, and disposed appropriately, b) the degreaser system, which is believed to be one of the sources of contamination, was properly cleaned and emptied, and c) TCE free product that was identified in the subsurface soil adjacent to the bulk storage tank was pumped and shipped off-site. A phase II RI and the Feasibility Study are in progress at the site under the supervision of NYSDEC.

To achieve the RI/FS objectives, the following work has been or will be performed at the site:

- * Surface and subsurface soil sampling and analyses.
- * Groundwater sampling and analyses.
- * Bishop Brook sediment sampling and analyses.
- * Health and Environmental risk assessment.
- * A detailed Feasibility Study.

3.2 SCHEDULE FOR REMEDIAL PROGRAM

A schedule for the RI/FS is detailed in the work plan, dated May 1992. Figure 3 depicts the proposed schedule.

4.0 CITIZEN PARTICIPATION ACTIVITIES

This section describes the specific citizen participation activities planned to be carried out during the RI/FS site remedial program. These activities will be developed in phases as the remedial program progresses, and may be modified as the DEC Project Manager and

assigned Citizen Participation Specialist gain additional insight into local interest in citizen participation and the project, or as the technical program and information about the site changes.

Below are listed some major elements of the site remedial program. For each program element, the preliminary citizen participation activities that shall take place or have taken place are listed. As previously noted, additional citizen participation activities may be added, and the plan revised to include Design and Construction, Operation and Maintenance activities, etc. as the site progresses through the remedial process.

COMPLETED CITIZEN PARTICIPATION ACTIVITIES

1. DEC has established a preliminary site mailing list. This mailing list will be updated by DEC following each public meeting, and as additional interested citizens are located by DEC and DOH.
2. The Village of Fayetteville has established a local document repository at the Village Clerk - Treasurer's office located at 425 East Genesee Street, Fayetteville, NY 13066. The working hours for this office are 8AM to 4PM, Monday thru Friday. DEC will utilize the local document repository for placing the site related documents.
3. DEC has placed available site documents in the repository.

FUTURE CITIZEN PARTICIPATION ACTIVITIES

A public meeting will be held by DEC after the preparation of the Proposed Remedial Action Plan (PRAP). The purpose of the meeting will be to provide citizens with the details of the results of the investigation, evaluation of the remedies, the remedial action proposed for the site, and to learn their concerns and answer questions.

- * DEC and DOH will prepare a public notice of the completion of the FS and the PRAP. This will include all pertinent public meeting information (date, time, place, etc.), and information on: what the FS, PRAP, and ROD are, an explanation of where the remedial process goes from here, project contacts, the information repository locations, start and end dates of the 30-day comment period, etc.
- * DEC will make necessary meeting room arrangements.
- * DEC will distribute meeting notice to the mailing list.
- * Depending on the magnitude of public interest, a transcript of the public meeting may be taken. Copies of the transcript will be placed in the document repositories and incorporated into the Administrative Record for the site.
- * DEC will conduct the public meeting, with the participation of DOH.
- * DEC will prepare a Responsiveness Summary that addresses issues raised during the public comment period and the public meeting, with the assistance

and input of DOH.

- * DEC will distribute the Responsiveness Summary to the interested parties and repositories after the end of the 30-day comment period.
- * If substantial changes are made to the Proposed Remedial Action Plan (PRAP) as a result of public comment, a notice will be sent by DEC to the mailing list explaining such changes.

UPON SIGNING OF RECORD OF DECISION

- * DEC Press office in Central Office will prepare and distribute a press release regarding the signing of the Record of Decision.

5.0 CONTACT LIST

Please refer to Appendix A.

6.0 COMPANY AND REGULATORY AGENCY CONTACTS

- * NYSDEC Contacts: Mr. Vivek Nattanmai, P.E., Project Manager
Mr. Charlie Branagh, P.E., Regional Engineer
Ms. Katie Lacey, Citizen Participation
Specialist

In addition, NYSDEC's toll free number is available for your use. The number is staffed daily, Monday through Friday during business hours, by members of the NYSDEC's Albany-based citizen participation staff. Messages will be answered as soon as possible. The number is: 800-342-9296. Please be sure to leave your name, telephone number, and the name of the site you are calling about.

- * NYSDOH Contacts: Ms. Henri Hamel, NYSDOH, Syracuse
Ms. Susan Van Patten, Albany DOH HeLP contact

In addition, NYSDOH has a toll free number, 800-458-1158, available for public use. If you call this number, ask the operator for Extension 308 if you have questions for the DOH technical staff, or Extension 402 if you need to reach the Health Liaison Program (HeLP) staff.

7.0 Document Repositories

Document repositories are established at the following locations, to make site

documents easily accessible for the public to read and review. We encourage you to use the document repository and review site documents prior to attending public meetings whenever possible.

1. NYSDEC Region 7 Headquarters
Div. of Hazardous Waste Remediation
615 Erie Boulevard West
Syracuse, NY 13204-2400
Phone: (315)426-7400
BY APPOINTMENT ONLY
2. Village Clerk - Treasurer's Office
425 East Genesee Street
Fayetteville, NY 13066
3. NYSDEC
Division of Hazardous Waste Remediation
Bureau of Western Remedial Action
50 Wolf Road
Albany, NY 12233
Phone: (518)457-0315
BY APPOINTMENT ONLY

The following documents have been or will be placed in the document repository:

- IRM Work Plan
- RI/FS work Plan
- RI/FS Reports
- Citizen Participation Plan
- PRAP and ROD

8.0 GLOSSARY OF TERMS AND MAJOR PROGRAM ELEMENTS

Definitions of Commonly Used Citizen Participation Terms

Availability Session - Scheduled gathering of the Department staff and the public in a setting less formal than a public meeting. Encourages "one-to-one" discussions in which the public meets with Department staff on an individual or small group basis to discuss particular questions or concerns.

Citizen Participation - A process to inform and involve the interested/affected public in the decision-making process during identification, assessment and remediation of hazardous waste sites. This process helps to assure that the best decisions are made from environmental, human health, economic, social and political perspectives.

Citizen Participation Plan - A document that describes the site-specific citizen participation activities that will take place to complement the "technical" (remedial) activities. It also

provides site background and rationale for the selected citizen participation program for the site. A plan may be updated or altered as public interest or the technical aspects of the program change.

Citizen Participation Specialist - A Department staff member within the Division of Hazardous Waste Remediation who provides guidance, evaluation and assistance to help the Project Manager carry out his/her site-specific Citizen Participation program.

Contact List - Names, addresses and/or telephone numbers of individuals, groups, organizations and media interested and/or affected by a particular hazardous waste site. Compiled and updated by the Department. Interest in the site, stage of remediation and other factors guide how comprehensive the list becomes. Used to assist the Department to inform and involve the interested/affected public.

Document Repository - Typically a regional DEC office and a public building, such as a library, near a particular site, at which documents related to remedial and citizen participation activities at the site are available for public review. Provides access to documents at times and a location convenient to the public. Environmental Management Councils (EMCs), Conservation Advisory Committees (CACs) as well as active local groups often can serve as supplemental document repositories.

Information Sheet - A written discussion of a site's remedial process, or some part of site, prepared by the Department for the public in easily understandable language. May be prepared for the "general" public or a particular segment. Uses may include, for example: discussion of an element of the remedial program, opportunities for public involvement, availability of a report or other information, or announcement of a public meeting. May be mailed to all or part of the interested public, distributed at meetings and availability sessions or sent on an "as requested" basis.

Project Manager - A Department staff member within the Division of Hazardous Waste Remediation (usually an engineer, geologist or hydrogeologist) responsible for the day-to-day administration of activities, and ultimate disposition of, one or more hazardous waste sites. The Project Manager works with the Citizen Participation staff, as well as Department fiscal and legal staff and the New York State Department of Health (NYSDOH) staff to accomplish site-related goals and objectives.

Public - The universe of individuals, groups and organizations: (a) affected (or potentially affected) by an inactive hazardous waste site and/or its remedial program; (b) interested in the site and/or its remediation; (c) having information about the site and its history.

Public Meeting - A scheduled gathering of the Department staff and the public to give and receive information, ask questions and discuss concerns. May take one of the following forms: large-group meeting called by the Department; participation by the Department at a meeting sponsored by another organization such as a town board or Department of Health; working group or workshop; public availability session

Public Notice - A written or verbal informational technique for telling people about an important part of a site's remedial program coming up soon (examples: announcement that the report for the RI/FS is publicly available; a public meeting has been scheduled).

The public notice may be formal, such as a paid legal advertisement in a newspaper circulated widely in the geographic area of the site

Public notices may also be more informal (examples: paid newspaper advertisement; telephone calls to key citizen leaders; targeted mailings).

Responsiveness Summary - A formal or informal written or verbal summary and response by the Department to public questions and comments. Prepared during or after important elements in a site's remedial program. The responsiveness summary may list and respond to each questions, or summarize and respond to questions in categories.

Toll-Free "800" Telephone Information Number - Provides cost-free access to the DEC or NYSDOH to members of the public who have questions, concerns or information about a particular hazardous waste site. Calls are taken and recorded 24 hours a day and a Department Albany-based staff member contacts the caller as soon as possible (usually the same day).

NYSDEC's Toll Free Number: 800-342-9296

NYSDOH's Toll Free Number: 800-458-1158
(315)426-7627 - NYSDOH Technical staff

Definitions of Significant Elements and Terms of the Remedial Program

NOTE: The first eight definitions represent major elements of the remedial process. They are presented in the order in which they occur, rather than in alphabetical order, to provide a context to aid in their definition.

Site Placed on Registry of Inactive Hazardous Waste Sites - Each inactive site known or suspected of containing hazardous waste must be included in the Registry. Therefore, all sites which state or county environmental or public health agencies identify as known or suspected to have received hazardous waste should be listed in the Registry as they are identified. Whenever possible, the Department carries out an initial evaluation at the site before listing.

Phase I Site Investigation - Preliminary characterizations of hazardous substances present at a site; estimates pathways by which pollutants might be migrating away from the original site of disposal; identifies population or resources which might be affected by pollutants from a site; observes how the disposal area was used or operated; and gathers information regarding who might be responsible for wastes at a site. Involves a search of records from all agencies known to be involved with a site, interviews with site owners, employees and local residents to gather pertinent information about a site. Information gathered is summarized in a Phase I report.

After a Phase I investigation, DEC may choose to initiate an emergency response; to nominate the site for the National Priorities List; or, where additional information is needed to determine site significance, to conduct further (Phase II) investigation.

Phase II Site Investigation - Ordered by DEC when additional information is still needed after completion of Phase I to properly classify the site. A Phase II investigation is not sufficiently

detailed to determine the full extent of the contamination, to evaluate remedial alternatives, or to prepare a conceptual design for construction. Information gathered is summarized in a Phase II report and is used to arrive at a final hazard ranking score and to classify the site.

Preliminary Site Assessment (PSA) - DEC's first investigation of a site where hazardous waste has or may have been disposed of illegally or improperly. The goal of the PSA is to determine whether a site meets the state's definition of a hazardous waste site by confirming the presence of hazardous waste and determining if the site poses a significant threat to public health or the environment. It is a three-step process combining the functions of the former Phase I and Phase II investigations, enabling DEC to conduct more efficient site investigations. The three steps are: 1) a records search, 2) sampling/surveys, and 3) groundwater monitoring.

Remedial Investigation (RI) - A process to determine the nature and extent of contamination by collecting data and analyzing the site. It includes sampling and monitoring, as necessary, and includes the gathering of sufficient information to determine the necessary for, and proposed extent of, a remedial program for the site.

Feasibility Study (FS) - A process for developing, evaluating and selecting remedial actions, using data gathered during the remedial investigation to: define the objectives of the remedial program for the site and broadly develop remedial action alternatives; perform an initial screening of these alternatives; and perform a detailed analysis of a limited number of alternatives which remain after the initial screening stage.

Remedial Design - Once a remedial action has been selected, technical drawings and specifications for remedial construction at a site are developed, as specified in the final RI/FS report. Design documents are used to bid and construct the chosen remedial actions. Remedial design is prepared by consulting engineers with experience in inactive hazardous waste disposal site remedial actions.

Construction - DEC selects contractors and supervises construction work to carry out the designed remedial alternative. Construction may be as straightforward as excavation of contaminated soil with disposal at a permitted hazardous waste facility. On the other hand, it may involve drum sampling and identification, complete encapsulation, leachate collection, storage and treatment, groundwater management, or other technologies. Construction costs may vary from several thousand dollars to many millions of dollars, depending on the size of the site, the soil, groundwater and other conditions, and the nature of the wastes.

Monitoring/Maintenance - Denotes post-closure activities to insure continued effectiveness of the remedial actions. Typical monitoring/maintenance activities include quarterly inspection by an engineering technician; measurement of level of water in monitoring wells; or collection of ground water and surface water samples and analysis for factors showing the condition of water, presence of toxic substances, or other indicators of possible pollution from the site. Monitoring/maintenance may be required indefinitely at many sites.

Consent Order - A legal and enforceable negotiated agreement between the Department and responsible parties where responsible parties agree to undertake investigation and cleanup or pay for the costs of investigation and cleanup work at a site. The order includes a description of the remedial actions to be undertaken at the site and a schedule for implementation.

Contract - A legal document signed by a contractor and the Department to carry out specific

site remediation activities.

Contractor - A person or firm hired to furnish materials or perform services, especially in construction projects.

Delisting - Removal of a site from the state Registry based on a study which shows the site does not contain hazardous wastes.

Potentially Responsible Party (PRP) Lead Site - A hazardous waste site at which those legally liable for the site have accepted responsibility for investigating problems at the site, and for developing and implementing the site's remedial program. PRP's include: those who owned the site during the time wastes were placed, current owners, past and present operators of the site, and those who generated the wastes placed at the site. Remedial programs developed and implemented by PRP's generally result from an enforcement action taken by the State and the costs of the remedial program are generally borne by the PRP.

Ranking System - The United States Environmental Protection Agency (USEPA) uses a hazard ranking system (HRS) to assign numerical scores to each hazardous waste site. The scores express the relative risk or danger from the site.

Responsible Parties - Individuals, companies (e.g. site owners, operators, transporters or generators of hazardous waste) responsible for or contributing to the contamination problems at a hazardous waste site. PRP is a potentially responsible party.

Site Classification - The Department assigns sites to classifications established by state law, as follows:

Classification 1 - A site causing or presenting an imminent danger of causing irreversible or irreparable damage to the public health or environment -- immediate action required.

Classification 2 - A site posing a significant threat to the public health or environment -- action required.

Classification 2a - A temporary classification for a site known or suspected to contain hazardous waste. Most likely the site will require a Phase I and Phase II investigation to obtain more information. Based on the results, the site then would be reclassified or removed from the state Registry if found not to contain hazardous wastes.

Classification 3 - A site which has hazardous waste confirmed, but not a significant threat to the public health or environment -- action may be deferred.

Classification 4 - A site which has been properly closed -- requires continued management.

Classification 5 - A site which has been properly closed, with no evidence of present or potential adverse impact -- no further action required.

State-Lead Site - An hazardous waste site at which the Department has responsibility for investigating problems at the site and for developing and implementing the site's remedial program. The Department uses money available from the State Superfund and the Environmental Quality Bond Act of 1986 to pay for these activities. The Department has direct control and responsibility for the remedial program.

Citizen Participation Plan
Accurate Die Casting Site

APPENDIX A

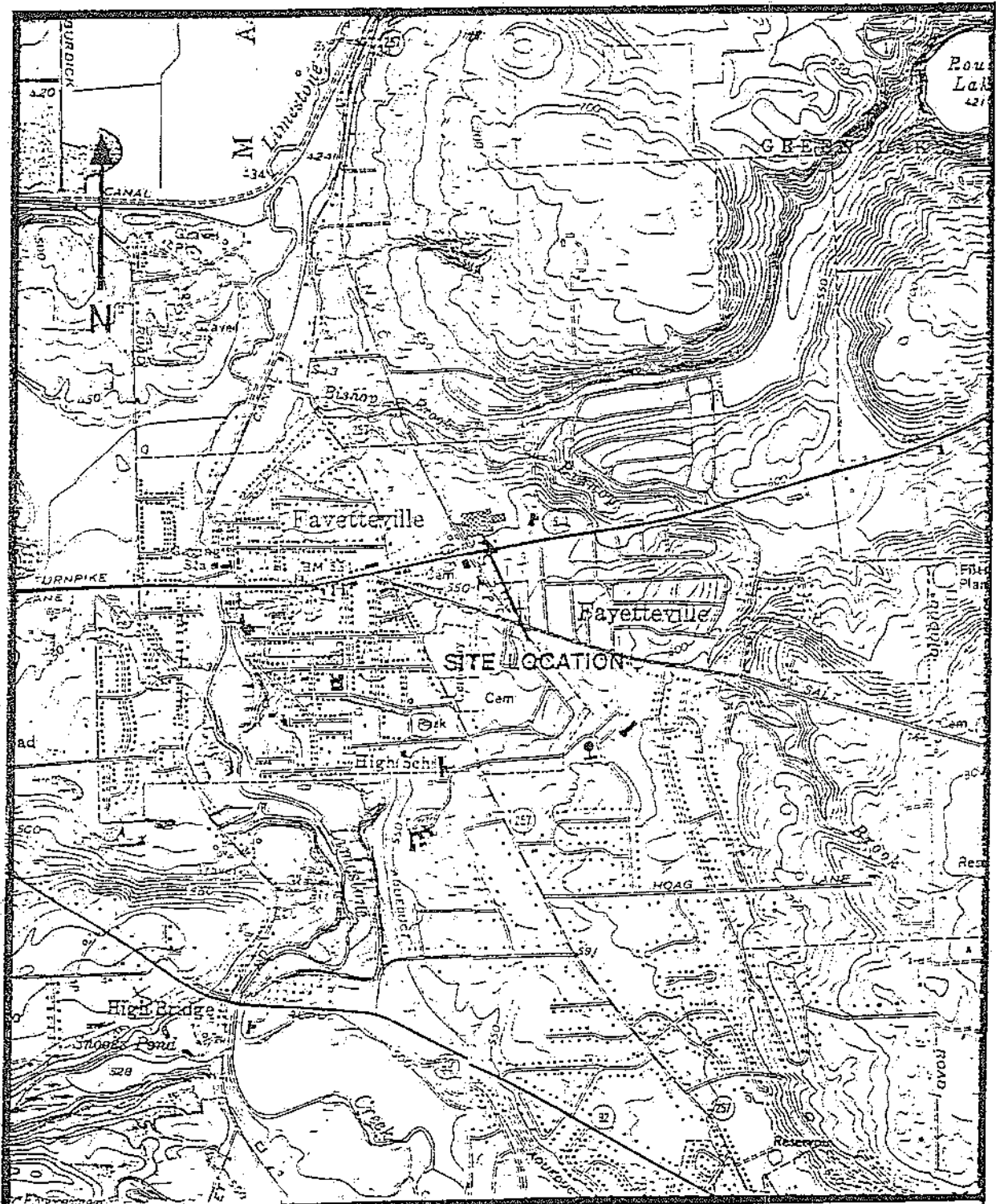
Contact List

The village of Fayetteville officials, the attorney representing the Village of Fayetteville and the residences located in the streets around the site that are listed below will be contacted by the Department for mailing information sheets and public meeting notices.

Brookside Lane
Margro Lane
Woodmancy Lane
Kessler Lane
Redfield Lane
Aladdin Drive
Town House Circle
Barker Lane
Camnot Lane
Penwood Lane
East Genesee Street
Huntleigh Avenue
Fieldstone Drive
Salt Springs Road

If any public residents, public environmental organizations and public officials would like their names to be included in the contact list for the site, please contact:

Vivek Nattanmai
Project Manager
Division of Hazardous Waste Remediation
NYSDEC
50 Wolf Road
Albany, NY 12233-7010
Phone: (518)457-0315.



SYRACUSE EAST, N. Y.
 N4300 - W7600 / 7.5
 1957

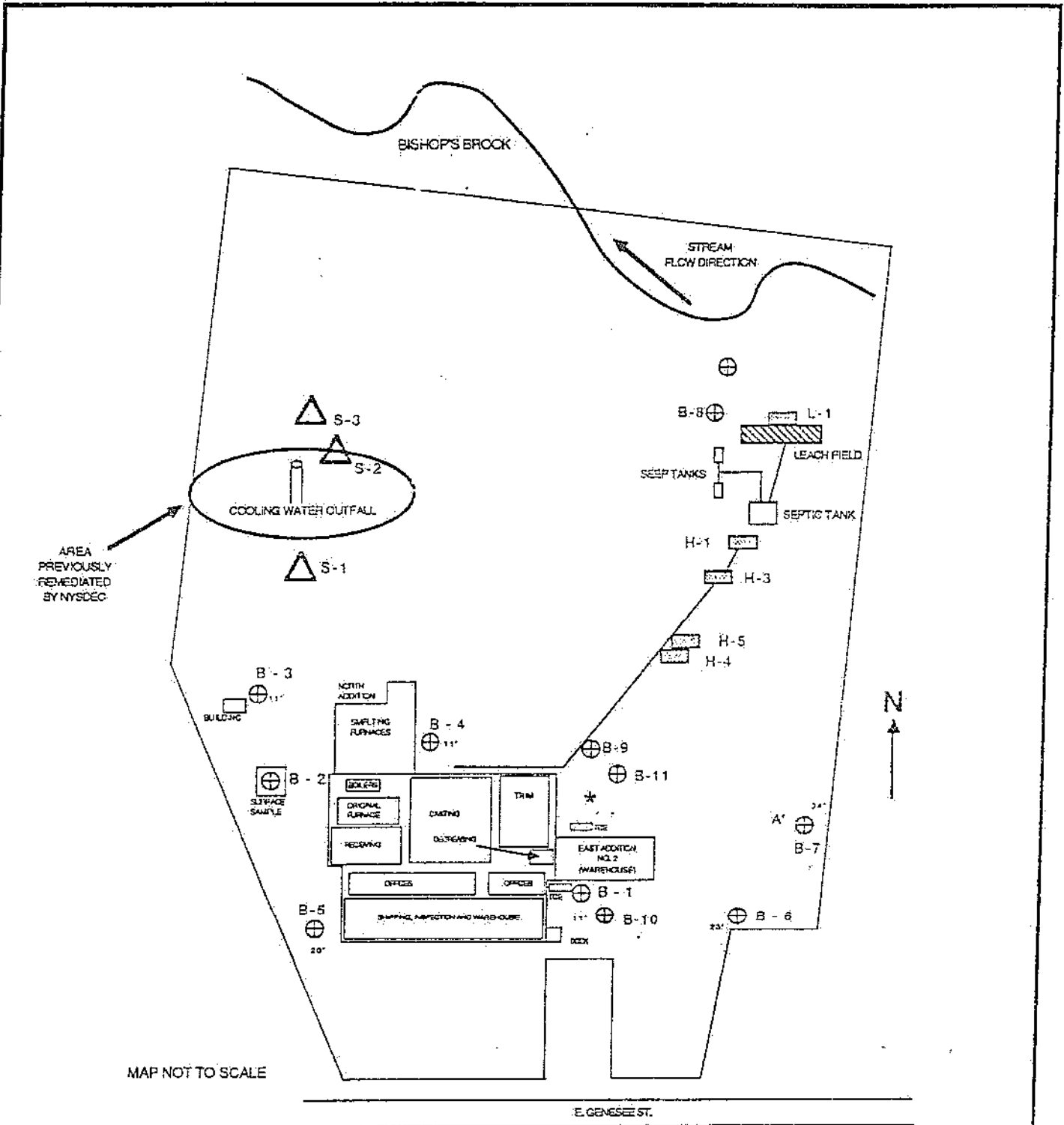
MANLIUS, N. Y.
 N4300 - W7532.5 / 7.5
 1973

QUADRANGLE LOCATION
 SCALE 1:24000

FIGURE 1
 SITE LOCATION MAP

RI/FS WORKPLAN
 ACCURATE DIE CASTING

Stearns & Wheeler
 ENVIRONMENTAL ENGINEERS
 AND SCIENTISTS



MAP NOT TO SCALE

E. GENESEE ST.

LEGEND	
	COMPLETED SOIL BORINGS
	COMPLETED TEST PITS
	SOIL SAMPLES

* SEE 24" X 36" SITE PLAN FOR BORINGS IN THIS AREA.

<p>FIGURE 2 SOIL SAMPLE LOCATIONS</p>
<p>RI/FS WORKPLAN ACCURATE DIE CASTING</p>
<p>Stearns & Wheeler ENVIRONMENTAL ENGINEERS AND SCIENTISTS</p>

ACCURATE DIE CASTING
 REMEDIAL INVESTIGATION/FEASIBILITY STUDY
 PROJECT SCHEDULE

	PREVIOUSLY COMPLETED		MONTH 1993												1994		
			MAR	APR	MAY	JUN	JUL	AUG	SEP	OCT	NOV	DEC	JAN	FEB			
INITIAL AUTHORIZATION																	
WORKPLAN DEVELOPMENT																	
NYSDEC REVIEW																	
REVISION/SUBMITTAL																	
DEC APPROVAL																	
REVISED AUTHORIZATION			X														
PROJECT PLANNING																	
FIELD WORK																	
LAB ANALYSIS																	
DATA REDUCTION/INTERPRETATION																	
RISK ASSESSMENT																	
RI REPORT																	
SUBMITTAL TO ITT																	
ITT REVIEW																	
REVISION																	
SUBMITTAL TO NYSDEC																	
FS PRELIM. SCREENING REPORT																	
SUBMITTAL TO ITT																	
ITT REVIEW																	
REVISION																	
SUBMITTAL TO NYSDEC																	
NYSDEC REVIEW																	
FS FINAL REPORT																	
SCHEDULE REVISION: 3/26/92		WILL BE SUBMITTED THREE MONTHS AFTER NYSDEC RESPONSE TO RI AND PRELIMINARY FS REPORT															

FIGURE 3