

VRF-AOC-01 SANITARY SEWER SYSTEM
 Flush lines and septic tanks. Containerize solids and liquids for off-site disposal. Crush septic tanks, leave concrete in place and backfill as necessary.

VRF-AOC-09 SITE-WIDE GROUNDWATER CONDITIONS
 Inject OGL or equivalent to remove groundwater contaminants in-situ. Re-sample after injection(s).

VRF-AOC-03 FORMER PETROLEUM STORAGE
 Excavate petroleum impacted soils and dewater as necessary to remove oil and dissolved phase contamination. Backfill excavation with clean soil after application of ORC or equivalent.

VRF-AOC-05 FORMER PCB-CONTAINING EQUIPMENT
 Excavate and dispose of contaminated concrete & soil

VRF-AOC-03 FORMER PETROLEUM STORAGE
 Excavate petroleum impacted soils and dewater as necessary to remove oil and dissolved phase contamination. Backfill excavation with clean soil after application of ORC or equivalent.

VRF-AOC-03 FORMER PETROLEUM STORAGE
 Excavate petroleum impacted soils and dewater as necessary to remove oil and dissolved phase contamination. Backfill excavation with clean soil after application of ORC or equivalent.

VRF-AOC-03 FORMER PETROLEUM STORAGE
 Excavate petroleum impacted soils and dewater as necessary to remove oil and dissolved phase contamination. Backfill excavation with clean soil after application of ORC or equivalent.

BN-1219-W06
 1,2-Dichloroethane (GW): 4.77

B1255-PCB-04
 Aroclor 1260: 1.22 mg/kg

B1261-PCB-01
 Acetone (GW): 111

TP-57:
 Mercury: 0.182 mg/kg
 Heavy Weight PHC: 1,310,000

TP-54:
 Heavy Weight PHC: 2,620,000

TP-56:
 Medium Weight PHC: 106,000
 Acetone: 333

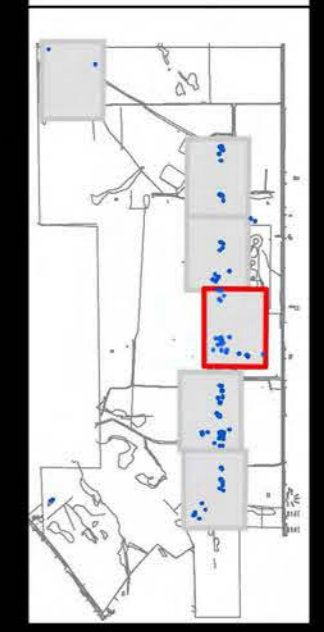
TP-10
 Heavy Weight PHC: 1,100,000
 Medium Weight PHC: 370,000

B1261-S06
 Acetone (soil): 86

TP-59:
 Acetone: 286 J
 Medium Weight PHC: 1,380,000

B1250-W01
 Acetone (GW): 399
 Benzene (GW): 132
 Chlorobenzene (GW): 122
 1,4-Dichlorobenzene (GW): 30
 B1250-PCB-01
 Aroclor 1260: 10

TP-64:
 Heavy Weight PHC: 1,250,000



Legend:

- Blue circle: EBS Analytical Results
- Red circle: RI/FS Analytical Results
- Red square: EBS Analytical Results
- Green line: EBS Analytical Results
- Black square: EBS Analytical Results
- Red square: RI/FS Analytical Results
- Black circle: EBS Analytical Results
- White circle: EBS Analytical Results
- Black cross: EBS Analytical Results
- Black plus: EBS Analytical Results
- Black asterisk: EBS Analytical Results

EBS Analytical Results

RI/FS Analytical Results