

SOURCE: USFWS West Winfield, NY Quadrangle.

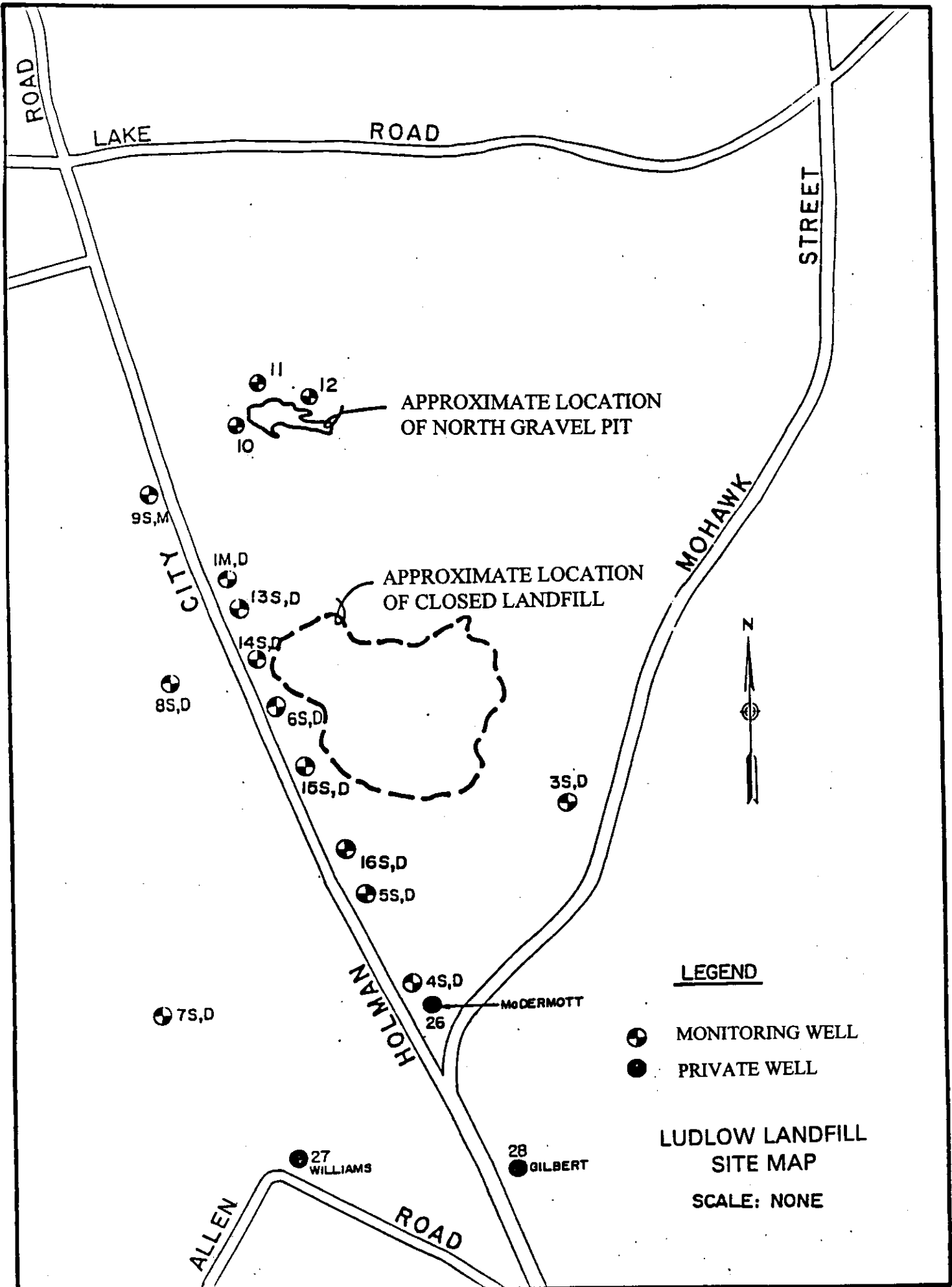
NORTH GRAVEL PIT
 ONEIDA COUNTY, NY
 SITE LOCATION MAP



2290.046-006
 Dec. 1997

1" = 2000'
 (Approximate Scale)





06-1197

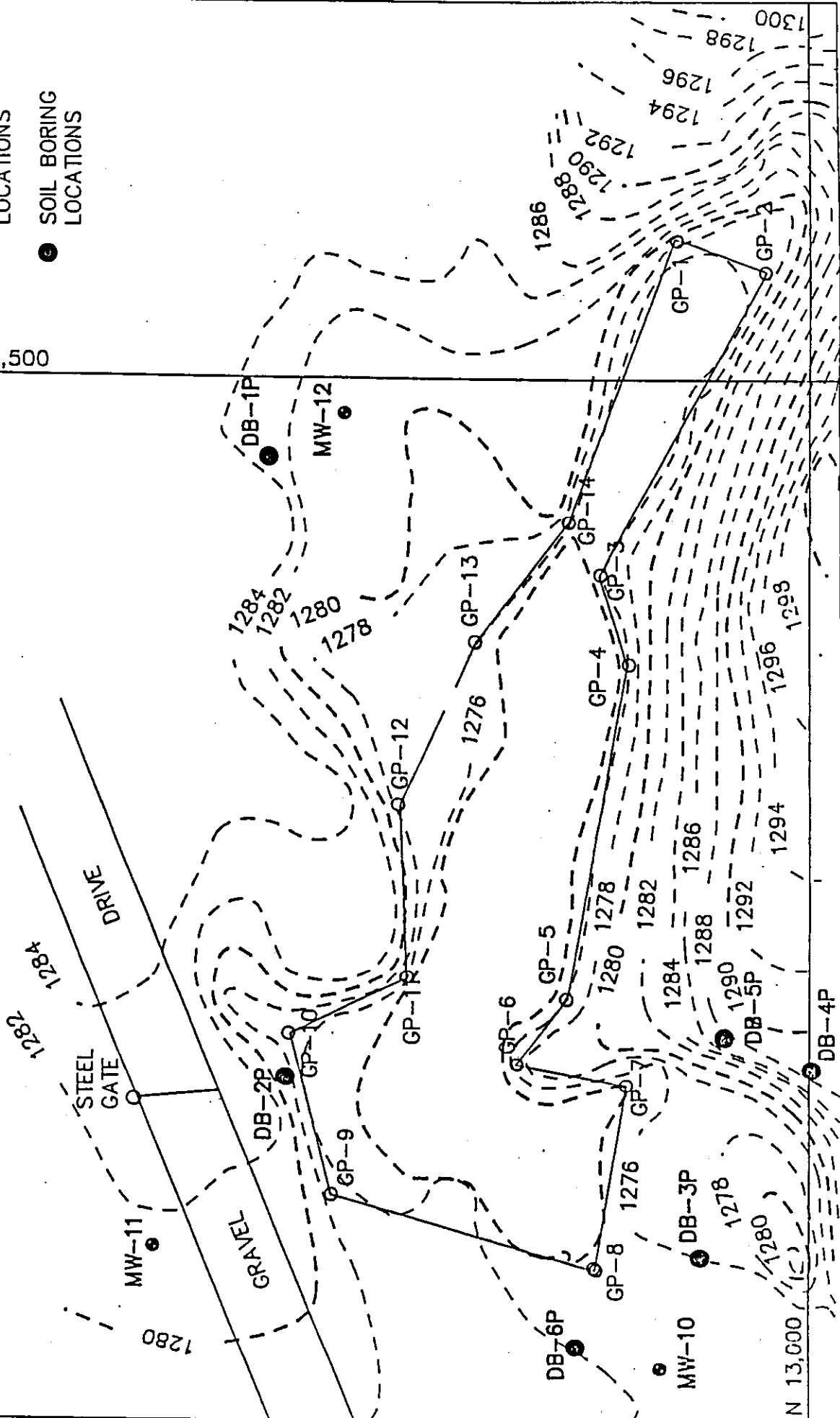
NORTH GRAVEL PIT LOCATIONS OF PREVIOUS SOIL BORINGS AND MONITORING WELLS



LEGEND:

- MONITORING WELL LOCATIONS
- SOIL BORING LOCATIONS

E 9,500



N 13,000

LUDLOW LANDFILL
NORTH GRAVEL PIT
TOPOGRAPHIC & BORING LOCATIONS - 1991



LEGEND:

- MONITORING WELL LOCATIONS
- SOIL BORING LOCATIONS
- SURFACE SOIL LOCATIONS

E 9,500

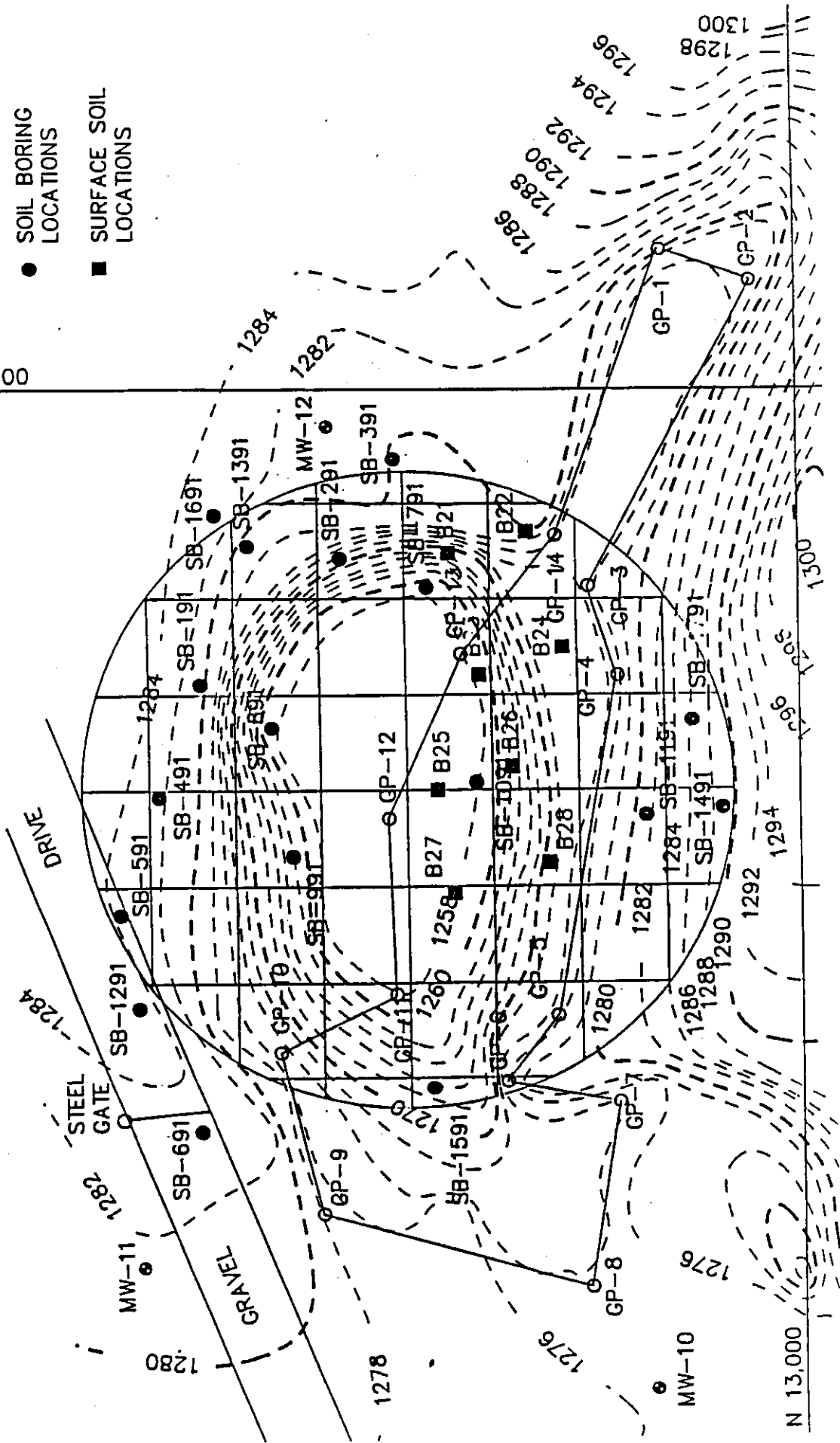


FIGURE 1-5

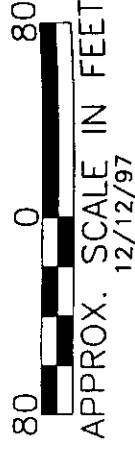


LEGEND

(240) OCTOBER 1991 SEDIMENT INVESTIGATION PCB ANALYTICAL RESULTS (mg/kg)

SPECIAL METALS CORP.
NORTH GRAVEL PIT

OCTOBER 1991
SEDIMENT INVESTIGATION
PCB ANALYTICAL RESULTS
(mg/kg)



2290.046-011



12/12/97

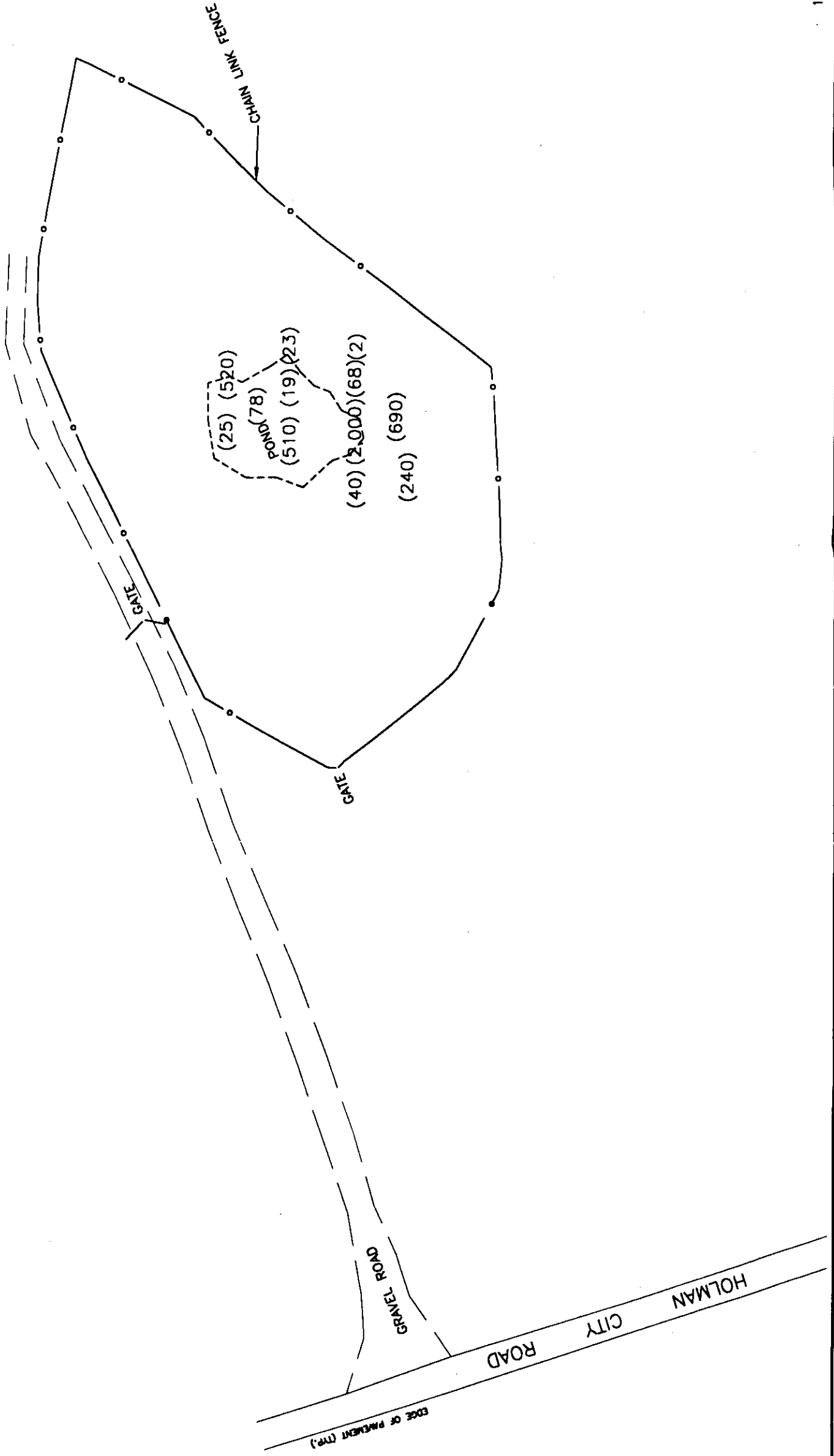


FIGURE 2-1

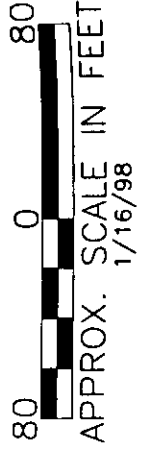


LEGEND

- SED-2 SHALLOW CORE LOCATION
- ▲ B-4 SOIL BORING LOCATION

SPECIAL METALS CORP.
NORTH GRAVEL PIT

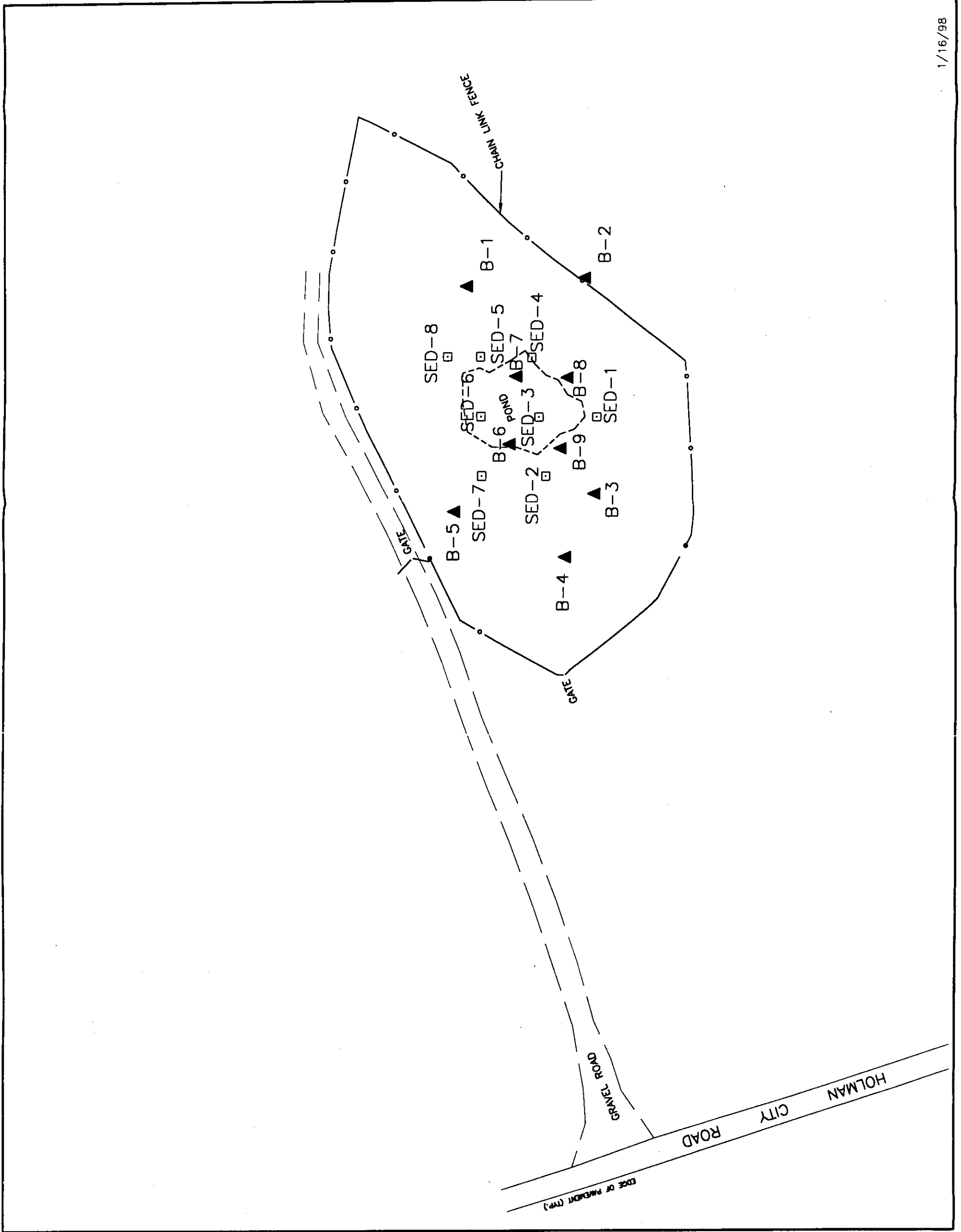
SOIL BORING AND
SHALLOW CORE SAMPLE
LOCATION MAP



2290.046-010



O'BRIEN & GERE
ENGINEERS INC.



1/16/98

FIGURE 2-2

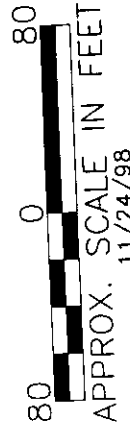
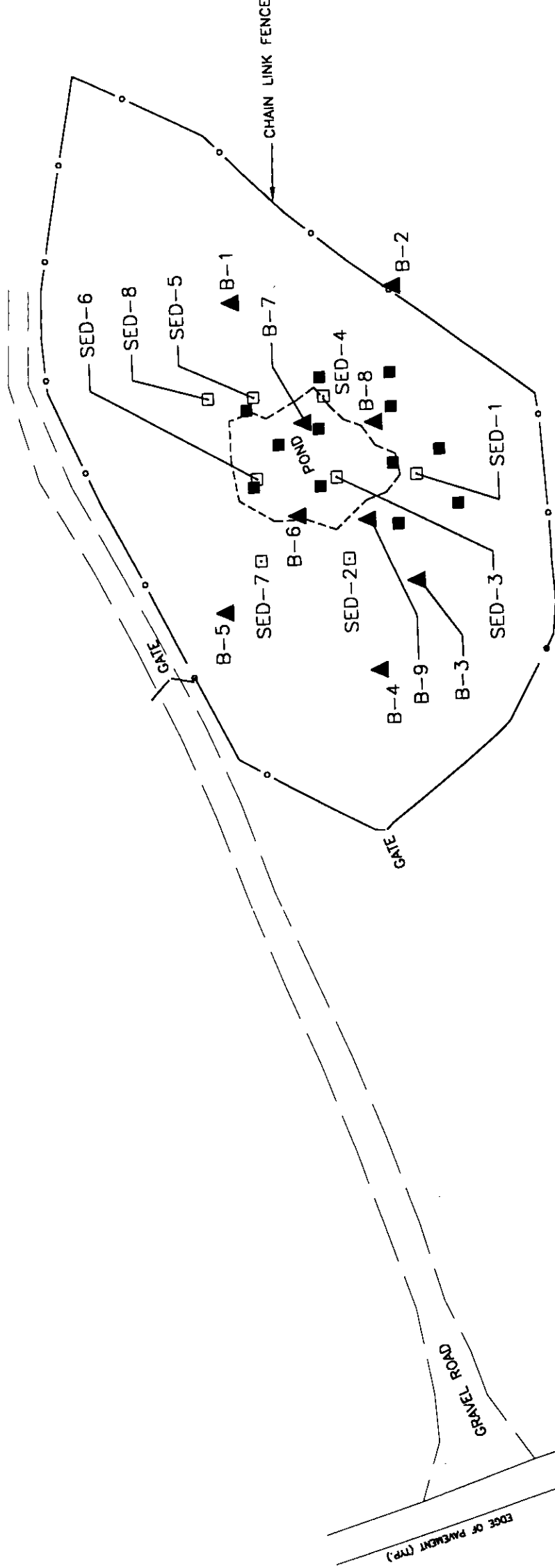


LEGEND

- SED-2 SHALLOW CORE LOCATION
- ▲ B-4 SOIL BORING LOCATION
- HISTORICAL SOIL BORING LOCATION

SPECIAL METALS CORP.
NORTH GRAVEL PIT

LOCATION OF
HISTORICAL AND
RECENT SOIL BORINGS



2290.046-010



OBRIEN & GERE
ENGINEERS INC.

FIGURE 2-3



LEGEND

- ⊕ MW-10
- ⊕ MONITORING WELL LOCATION
- ▣ GAGING STATION LOCATION
- APPROXIMATE GROUND SURFACE CONTOUR (FEET)

SPECIAL METALS CORP.
NORTH GRAVEL PIT

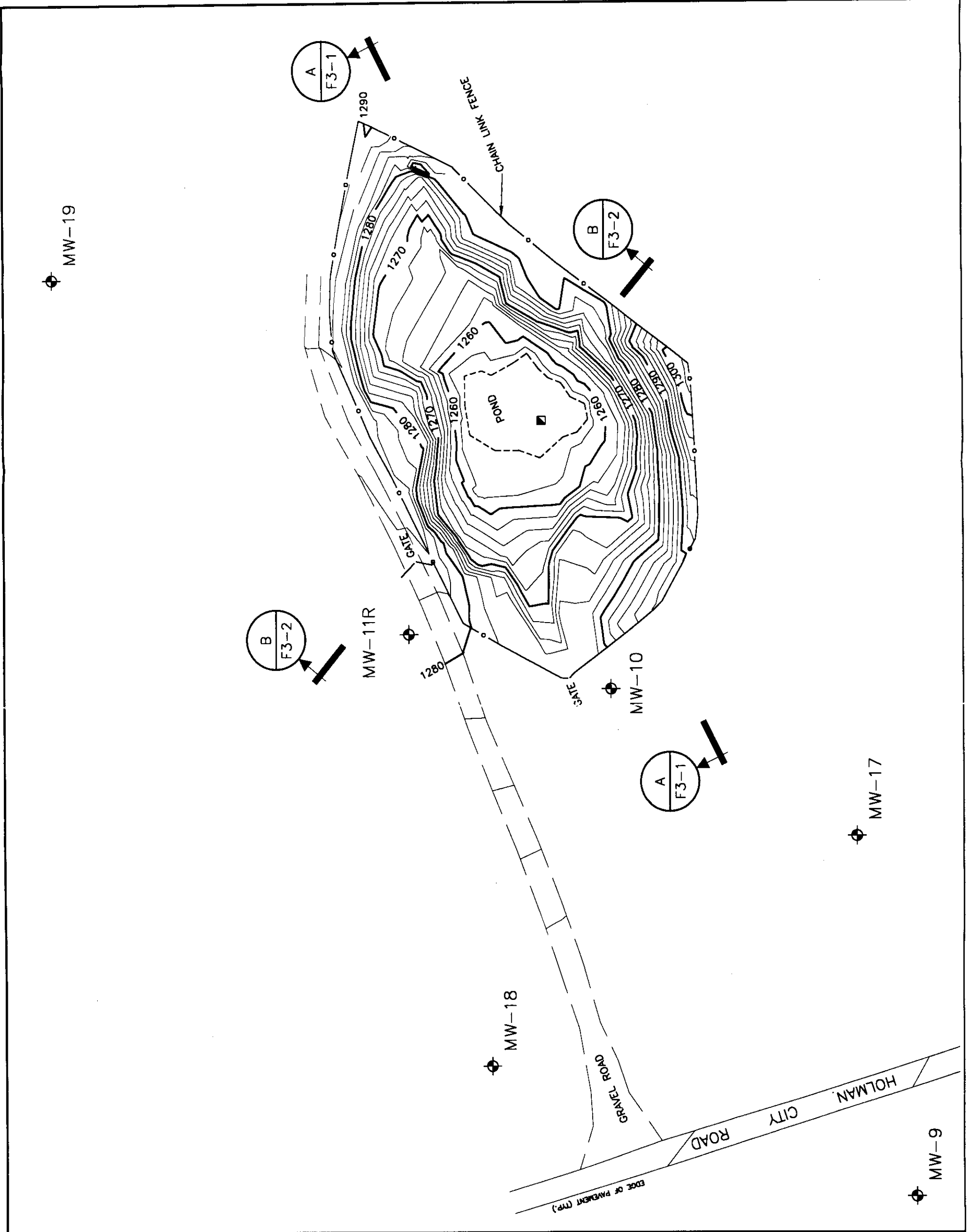
**GROUND WATER
MONITORING WELLS
LOCATION MAP**

80 0 80
APPROX. SCALE IN FEET
DATE: 4/18/99

FILE NO.: 2290.046-01F



OBRIEN & GIERE
ENGINEERS INC.



FILE NO.: 2290.046-022
DATE: APR. 1999

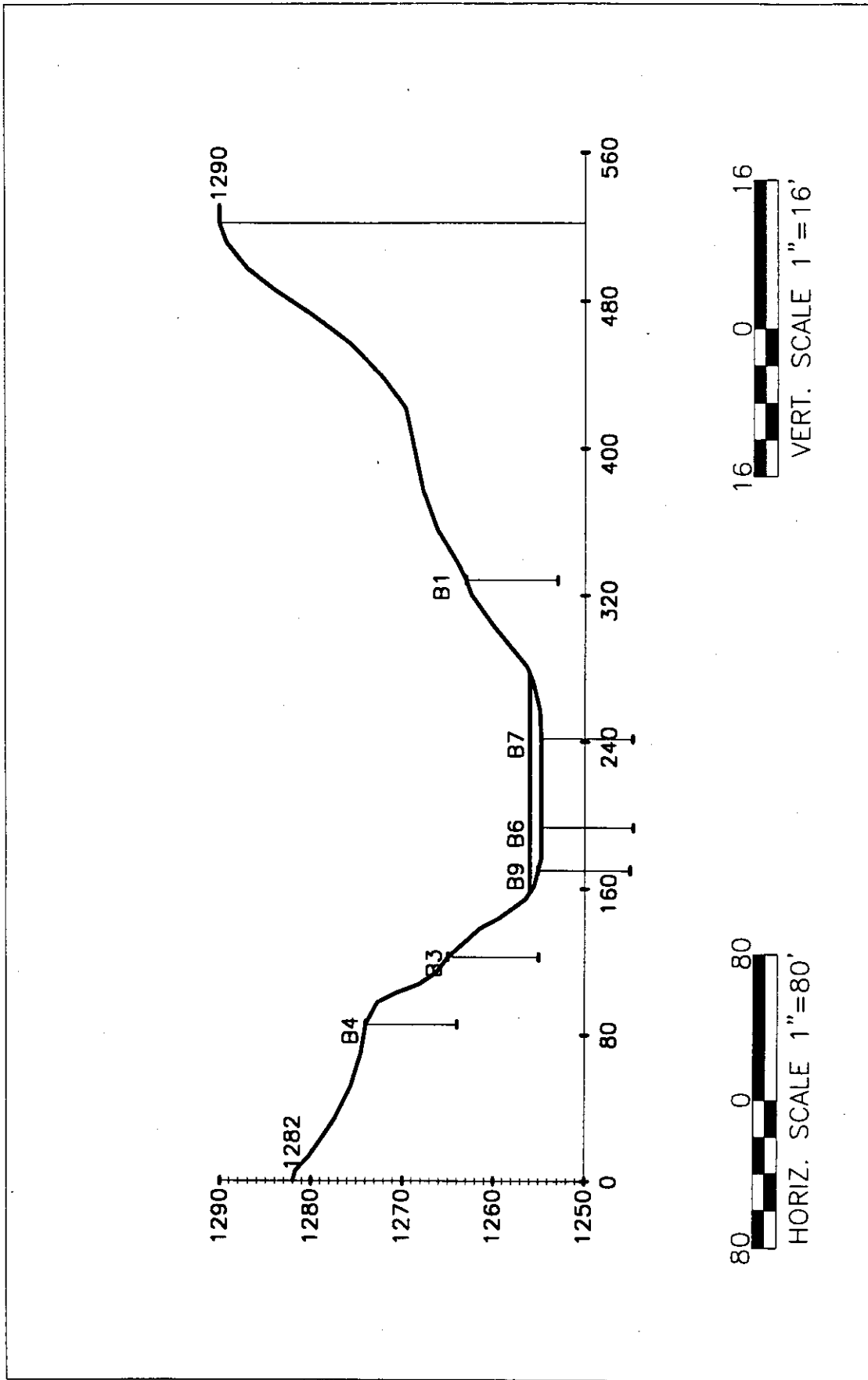


FIGURE 3-1

SPECIAL METALS CORP.
NORTH GRAVEL PIT
SECTION A-A

FILE NO.: 2290.046-023
DATE: APR. 1999

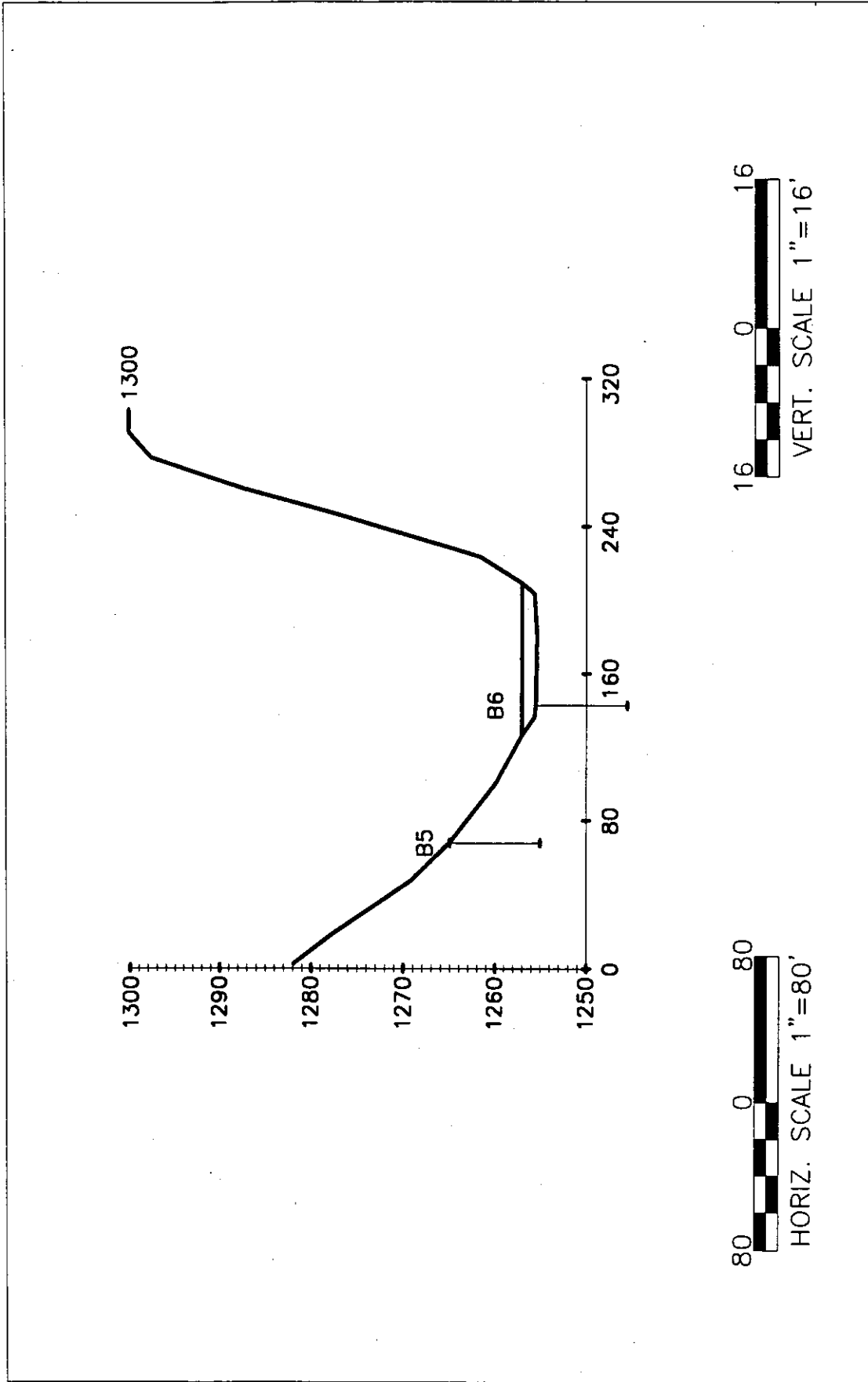


FIGURE 3-2

SPECIAL METALS CORP.
NORTH GRAVEL PIT
SECTION B-B

FIGURE 3-3



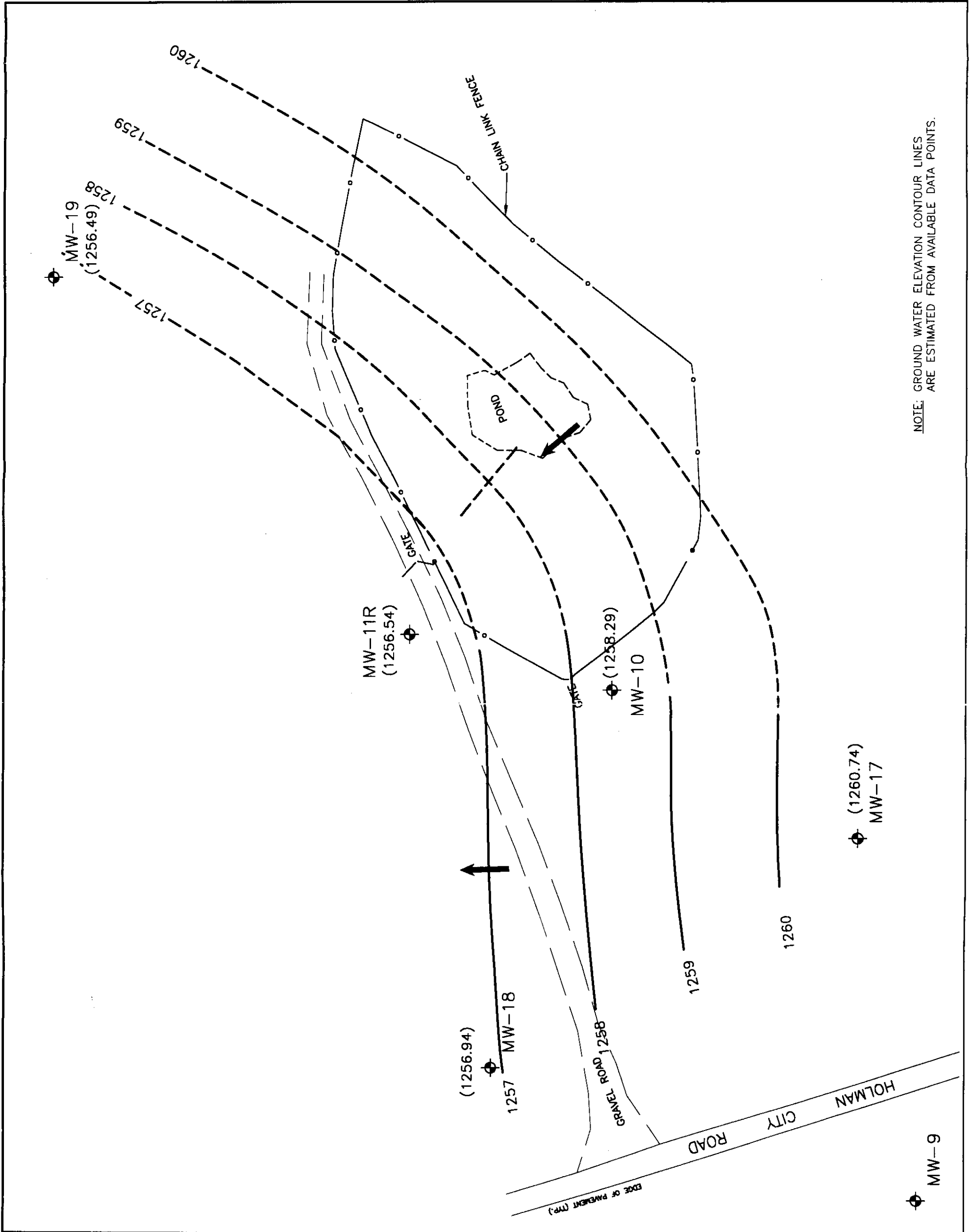
LEGEND

- MW-10
 MONITORING WELL LOCATION
- 1260
 APPROXIMATE GROUND WATER CONTOUR (FEET)
- (1256.49)
 GROUND WATER ELEVATION
- 1257
 ESTIMATED GROUND WATER CONTOUR (FEET)
- GROUND WATER FLOW DIRECTION
- SPECIAL METALS CORP.
 NORTH GRAVEL PIT

SHALLOW GROUND WATER ELEVATION MAP
 11/6/96

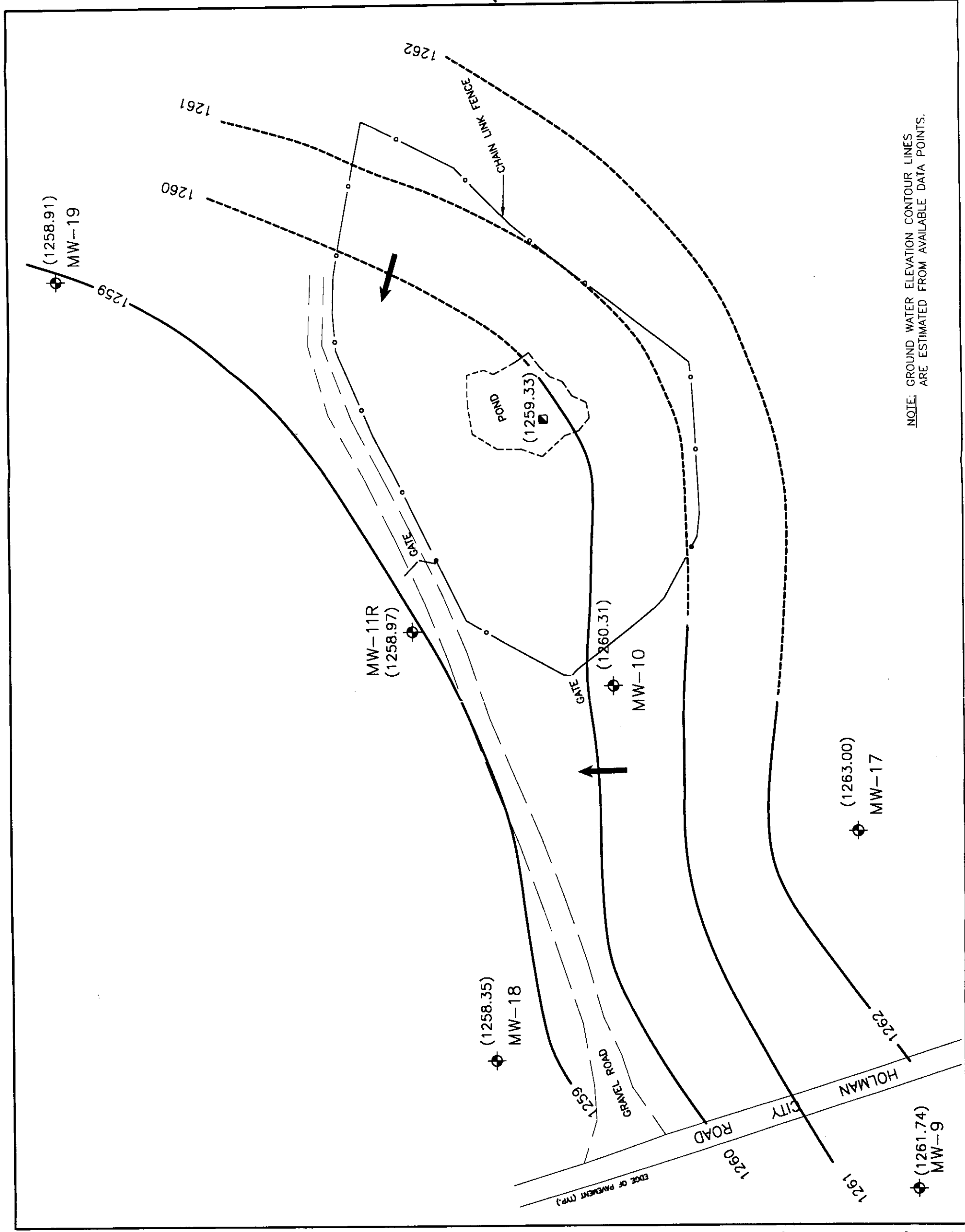
80 0 80
 APPROX. SCALE IN FEET
 DATE: 4/15/99

FILE NO.: 2290.046-007



NOTE: GROUND WATER ELEVATION CONTOUR LINES ARE ESTIMATED FROM AVAILABLE DATA POINTS.

FIGURE 3-4

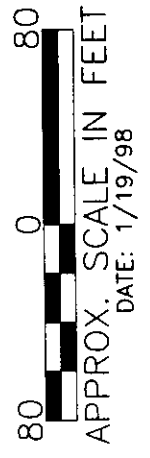


LEGEND

- ⊕ MW-10 MONITORING WELL LOCATION
- ▣ GAUGING STATION LOCATION
- APPROXIMATE GROUND WATER ELEVATION CONTOUR (FEET)
- (1256.49) GROUND WATER ELEVATION
- - - ESTIMATED GROUND WATER ELEVATION CONTOUR
- GROUND WATER FLOW DIRECTION
- - - POND EDGE

SPECIAL METALS CORP.
NORTH GRAVEL PIT

**SHALLOW GROUND WATER
ELEVATION MAP
2/20/97**



FILE NO.: 2290.046-008



NOTE: GROUND WATER ELEVATION CONTOUR LINES ARE ESTIMATED FROM AVAILABLE DATA POINTS.

FIGURE 3-5



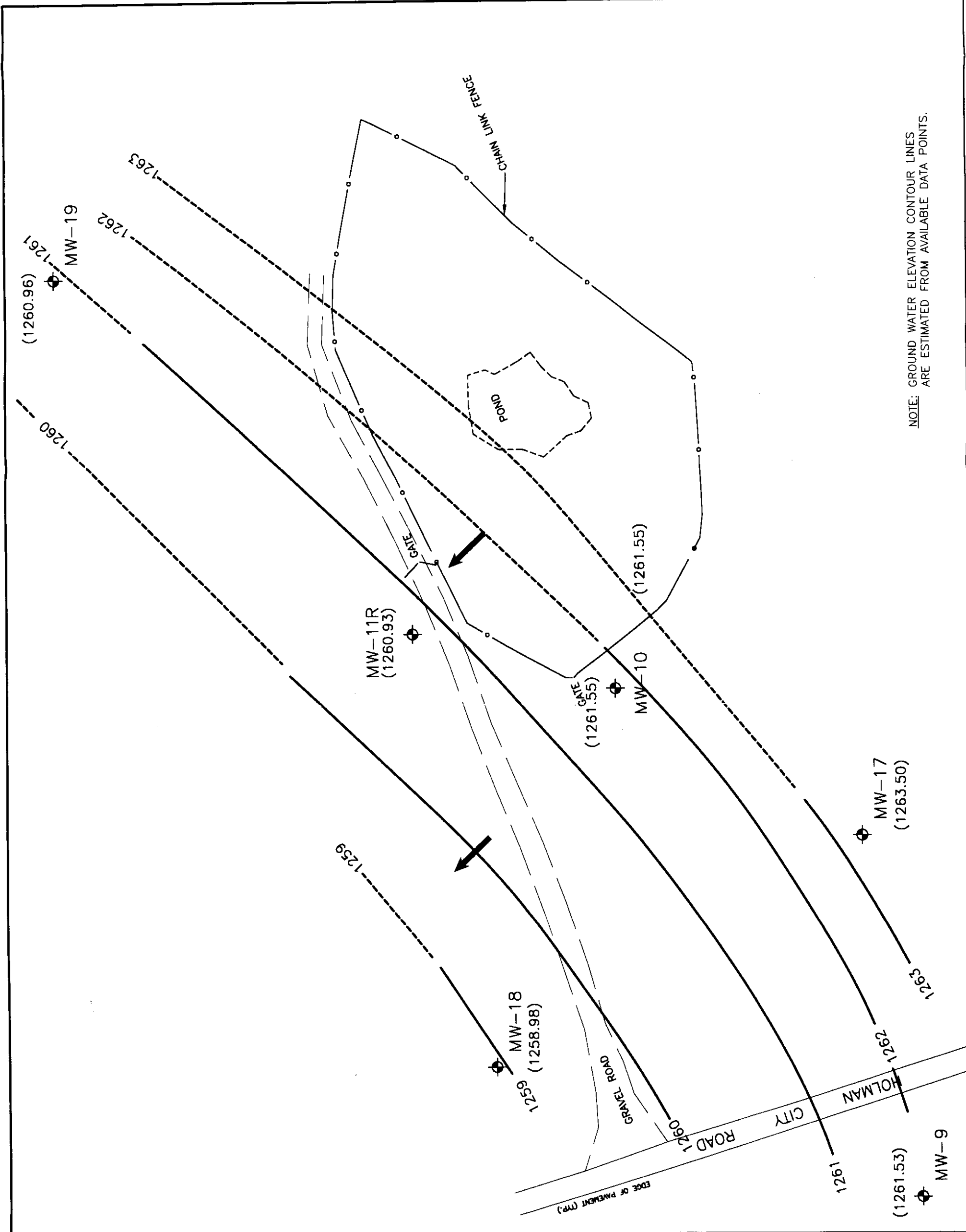
LEGEND

- MW-10
- MONITORING WELL LOCATION
- APPROXIMATE GROUND WATER ELEVATION CONTOUR (FEET)
- GROUND WATER ELEVATION (1256.49)
- ESTIMATED GROUND WATER ELEVATION CONTOUR 1251
- GROUND WATER FLOW DIRECTION
- POND EDGE
- SPECIAL METALS CORP. NORTH GRAVEL PIT

GROUND WATER ELEVATION MAP 6/10-11/97



DATE: 1/19/98
FILE NO.: 2290.046-009



NOTE: GROUND WATER ELEVATION CONTOUR LINES ARE ESTIMATED FROM AVAILABLE DATA POINTS.

1/16/98 SE VI K17FIC 199

FIGURE 3-6



NORTH GRAVEL PIT
ONEIDA COUNTY, N.Y.

SOURCE: USGS West Winfield and
Cassville, NY, 7.5 minute Quadrangle

2 MILE RADIUS
TOPOGRAPHIC MAP



JAN. 1998

2290.046-003



O'BRIEN & GERE
ENGINEERS INC.

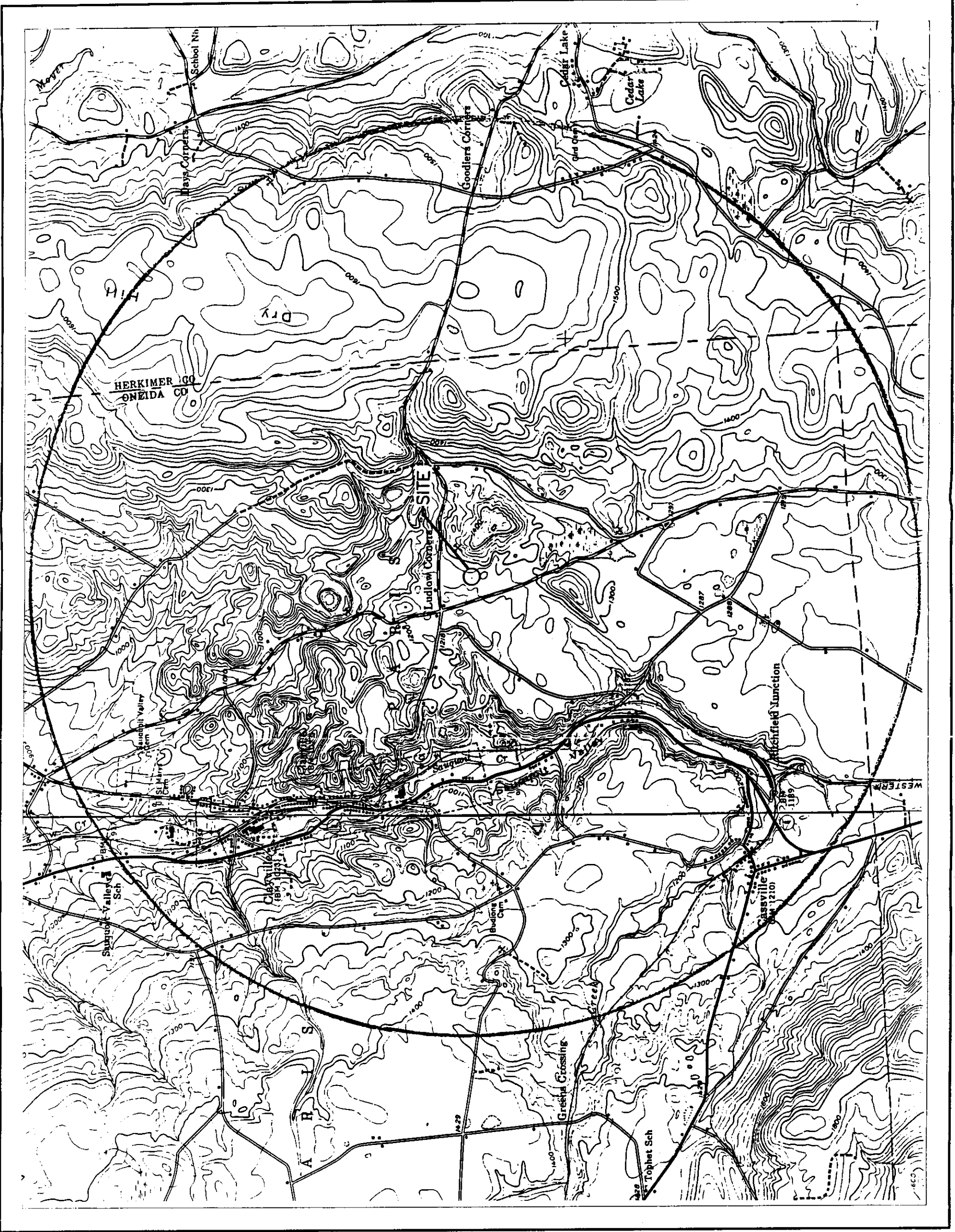


FIGURE 3-7



- MINE SPOILS
- LANDFILL/DUMP
- SUCCESSIONAL OLD FIELD
- SUCCESSIONAL NORTHERN HARDWOOD
- MAPLE-BASSWOOD FOREST
- OPEN WATER
- TERRESTRIAL CULTURAL AREA
- SHRUB SWAMP
- SITE

NOTE: Covertypes Boundaries are Approximate

NORTH GRAVEL PIT
ONEIDA COUNTY, N.Y.

COVERTYPE
MAP



JAN. 1998
2290.046-004



O'BRIEN & GERE
ENGINEERS INC.

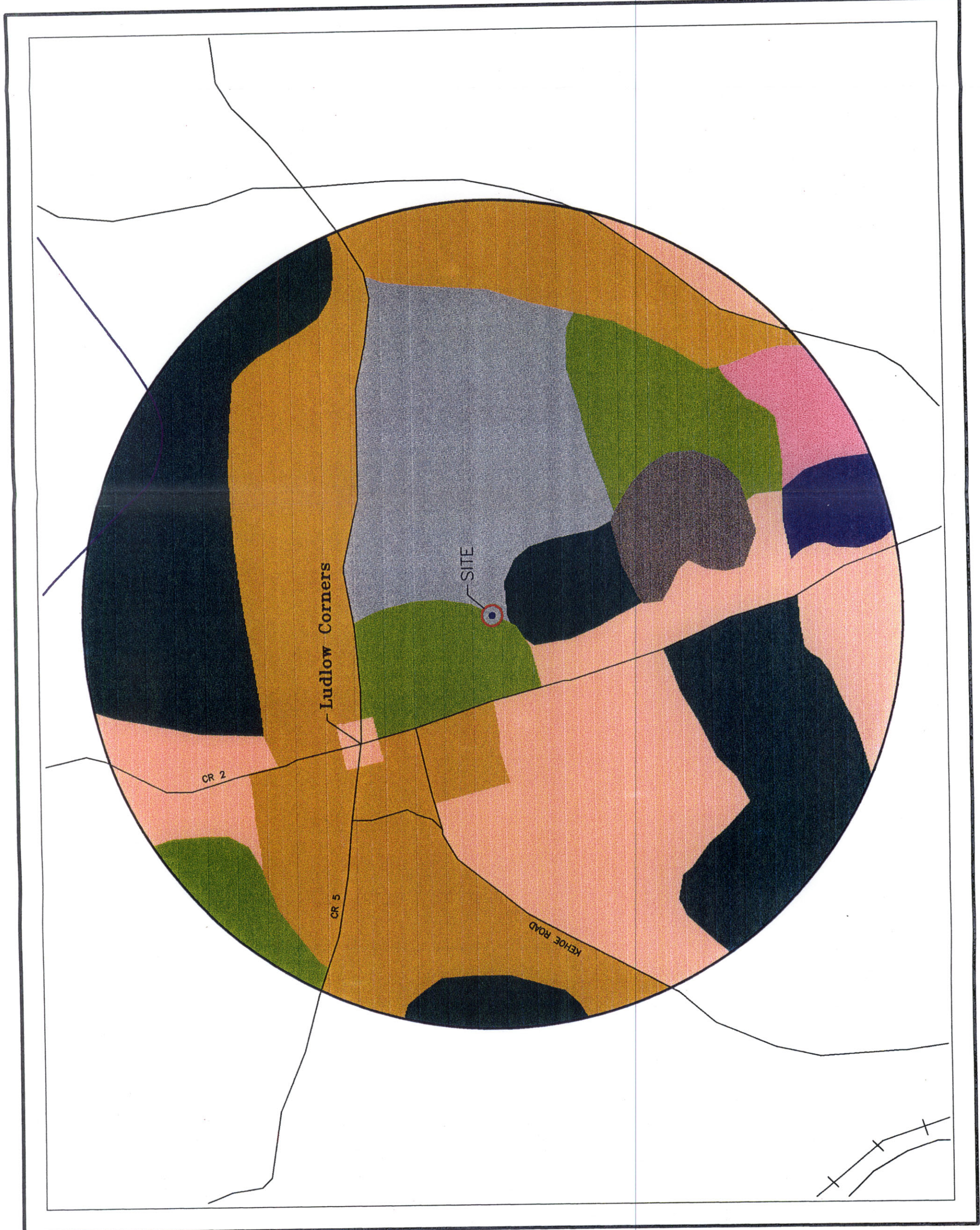
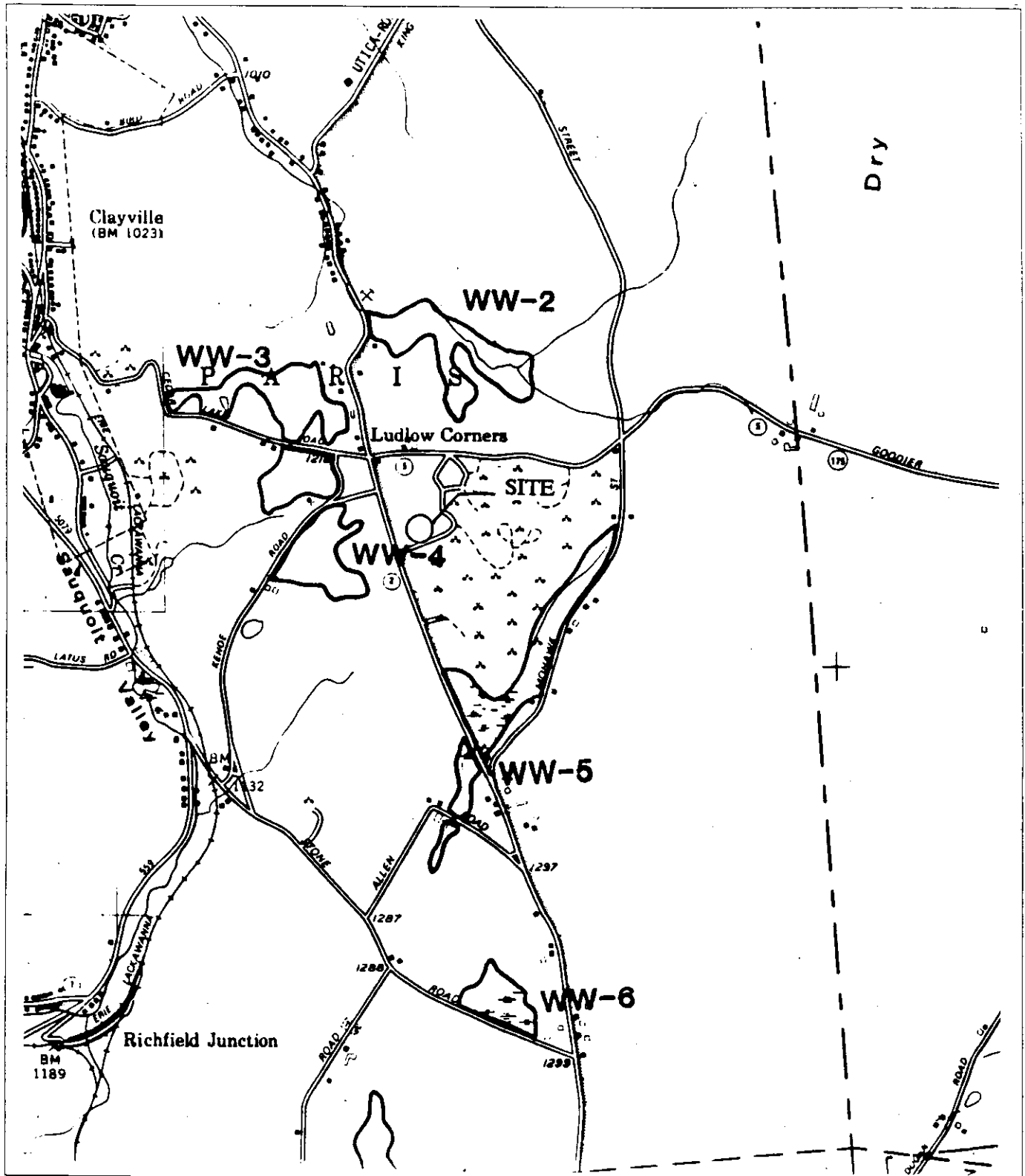


FIGURE 3-8



SOURCE: NYSDEC Freshwater Wetlands Oneida County Map 35 of 38.

NORTH GRAVEL PIT ONEIDA COUNTY, N.Y.

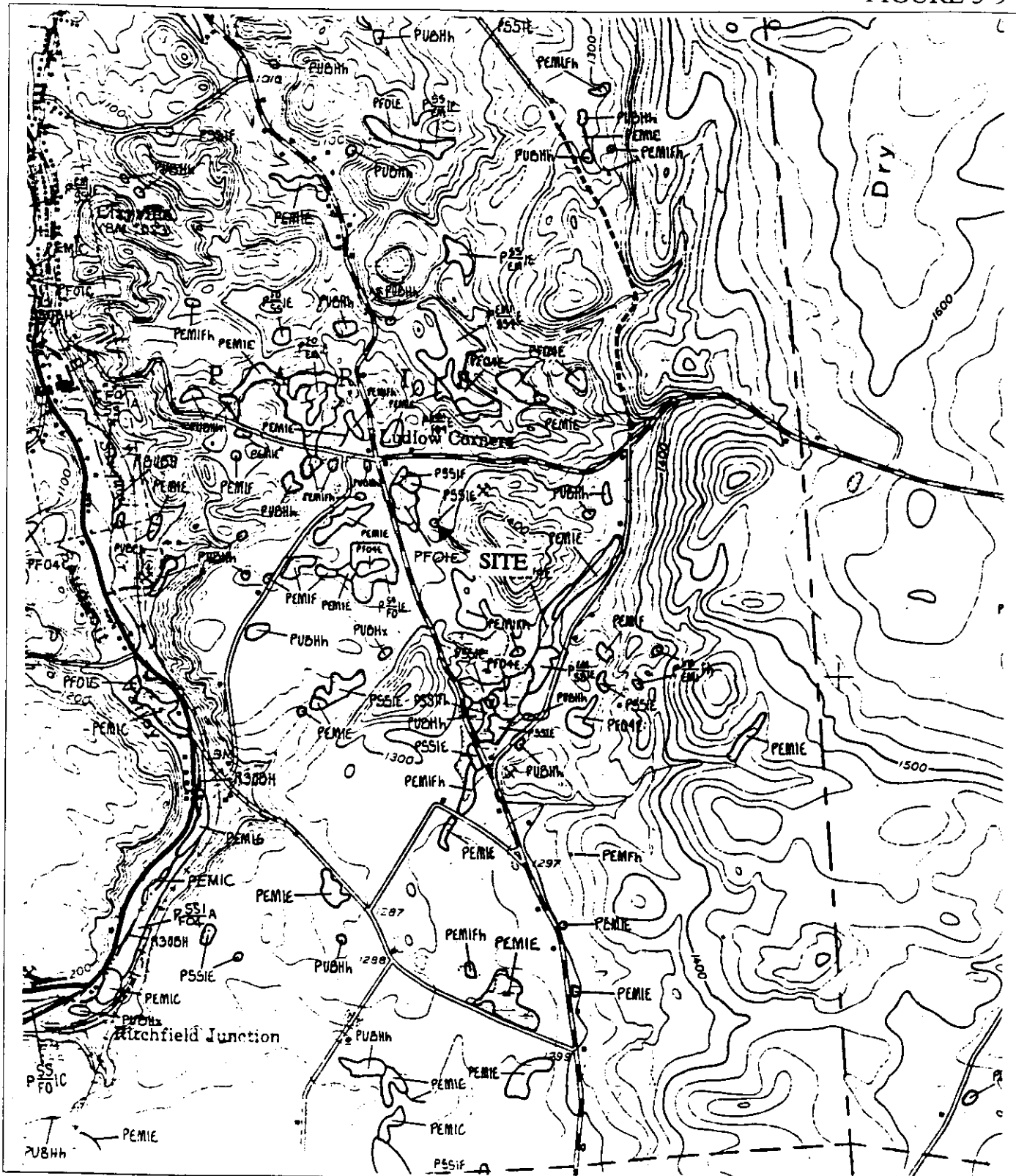
NEW YORK STATE FRESHWATER WETLANDS MAP

2290.046-005
JAN.1998

1" = 2000'
(Approximate Scale)



FIGURE 3-9



SOURCE: USFWS West Winfield, NY Quadrangle.

NORTH GRAVEL PIT ONEIDA COUNTY, N.Y.

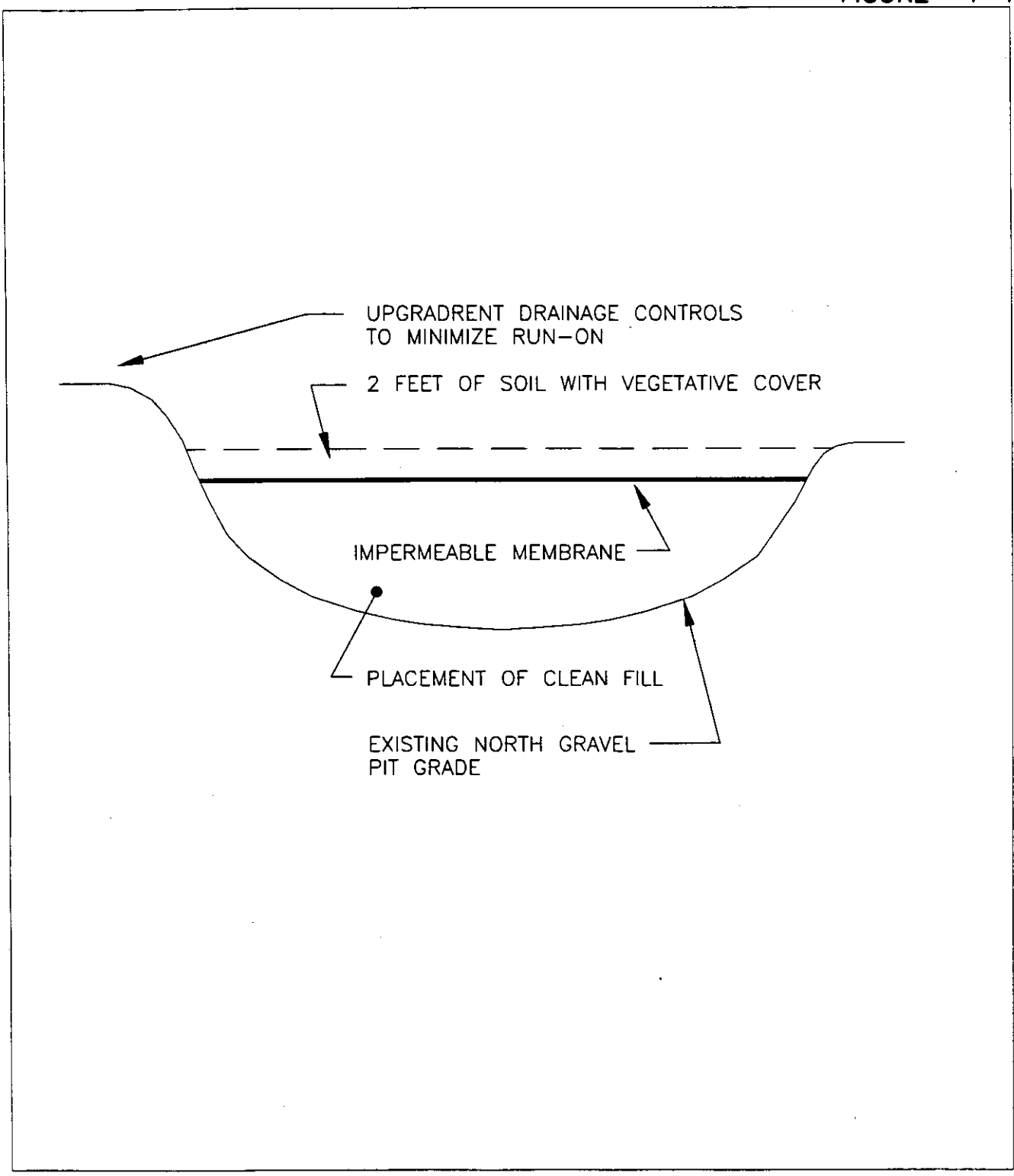
NATIONAL WETLANDS INVENTORY MAP



2290.046-002
JAN. 1998

1" = 2000'
(Approximate Scale)



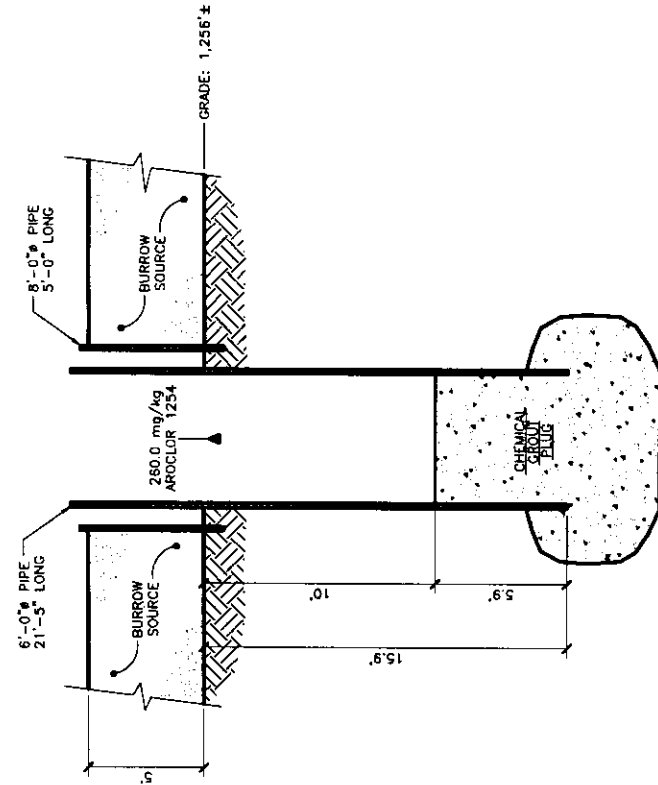


NORTH GRAVEL PIT
ONEIDA COUNTY, N.Y.
ALTERNATIVE NO.2
TYPICAL CROSS SECTION

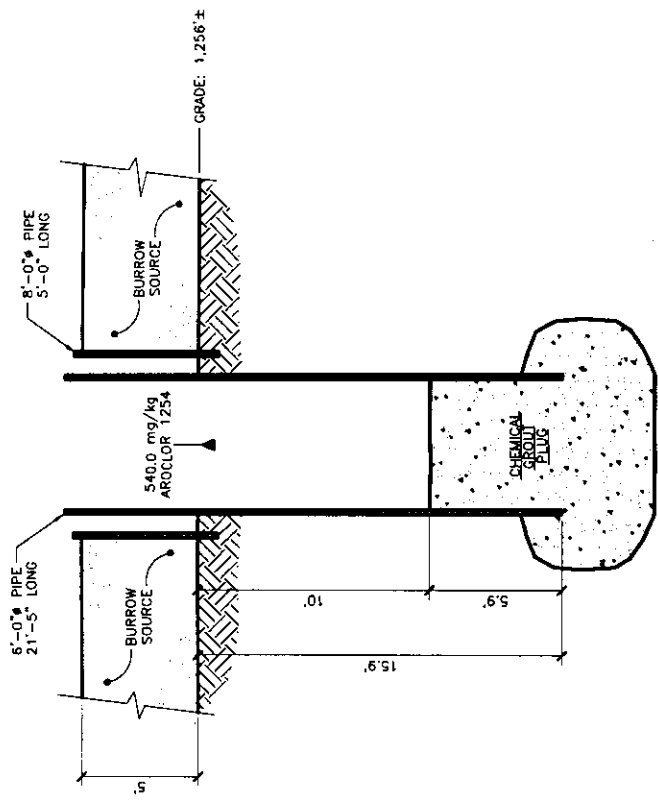
2290.046-012
NOV. 1999

NOT TO SCALE

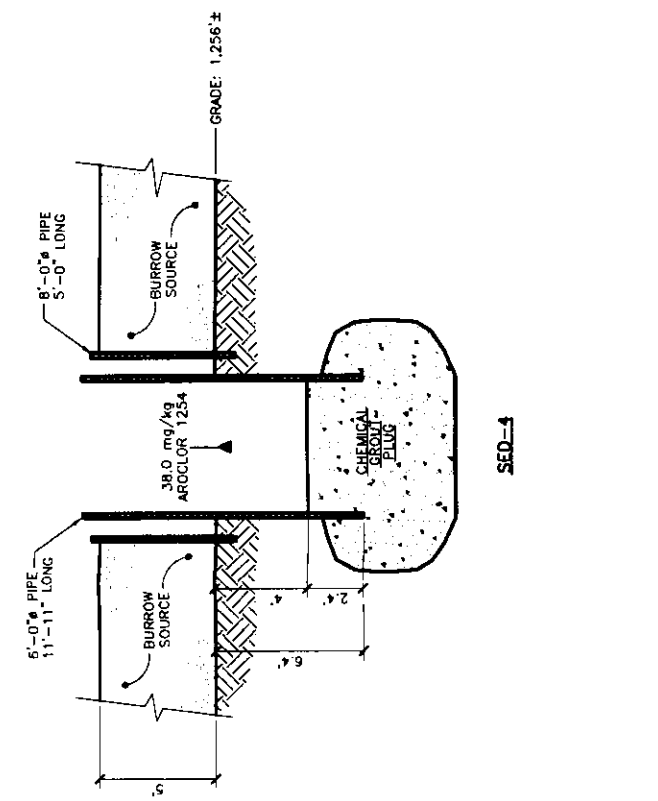




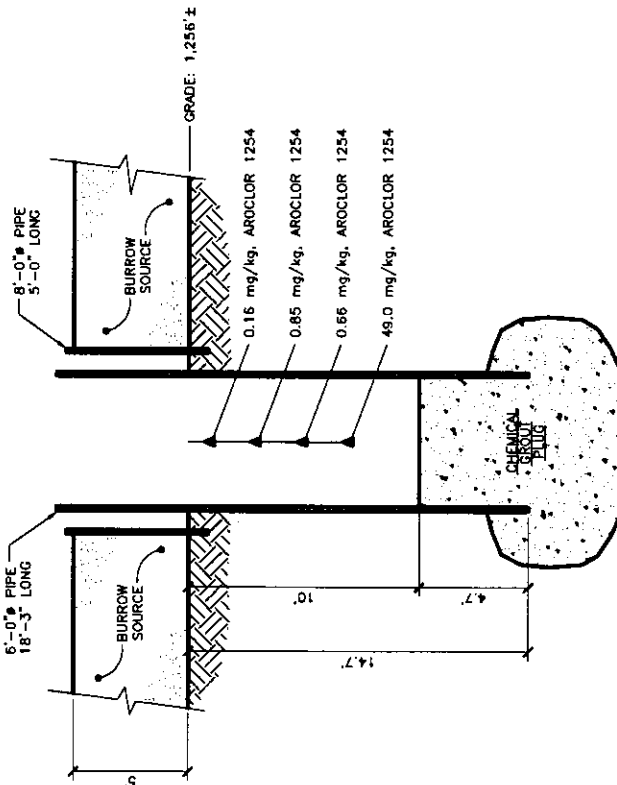
SED-2



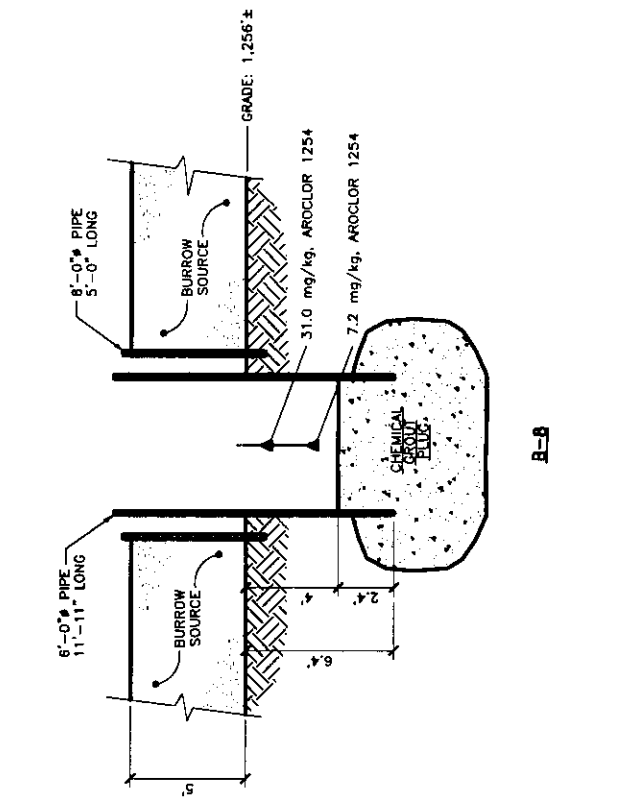
SED-6



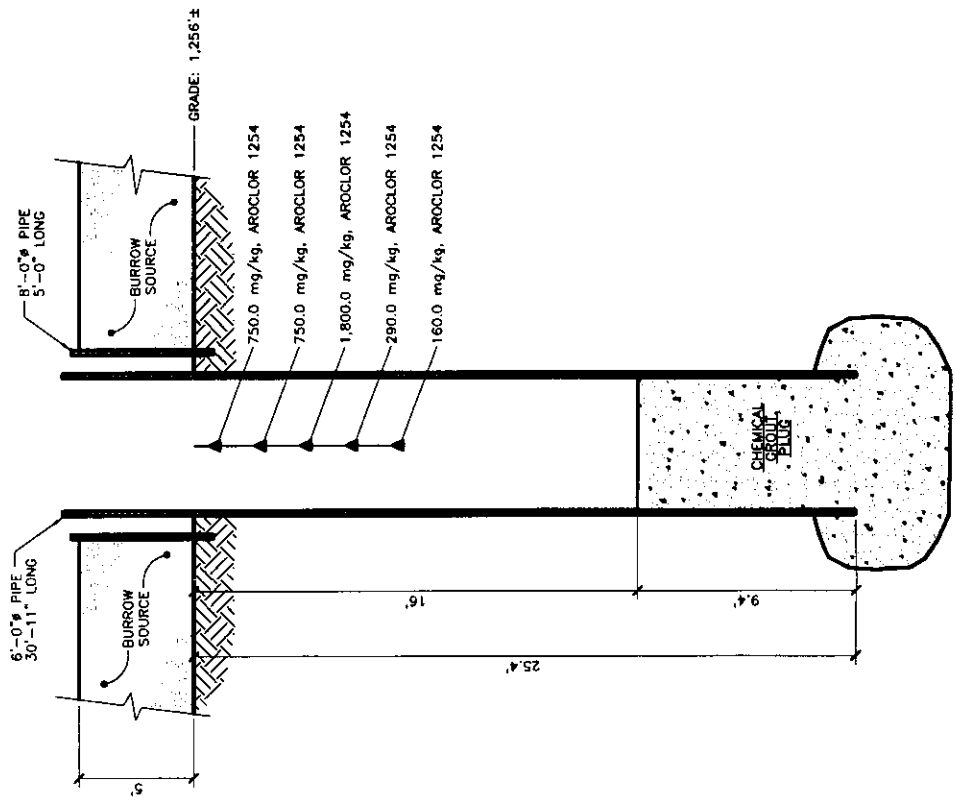
SED-4



B-7



B-8



B-9

THIS DRAWING WAS PREPARED AT THE SCALE INDICATED IN THE TITLE BLOCK. DIMENSIONS IN THE STATED SCALE MAY BE MODIFIED WHEN NECESSARY. DIMENSIONS ARE REPRODUCED BY ANY MEANS. USE THE GRAPHIC SCALE BAR IN THE TITLE BLOCK TO DETERMINE THE ACTUAL SCALE OF THIS DRAWING.



SPECIAL METALS CORP.

GENERAL
NORTH GRAVEL PIT
EXCAVATION SECTIONS

FILE NO. 2290.046-018
DATE NOV. 1999

FIGURE 4-2