

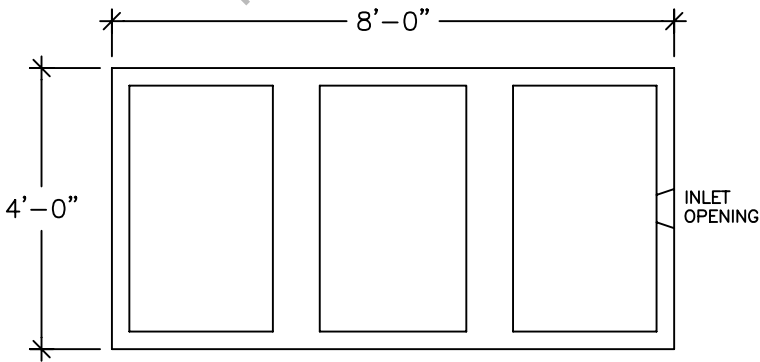
DRAFT - For information only, not for bid use  
HRP 6/11/2014 JK

# 24" LOW PROFILE REGULAR LEACHING GALLEY

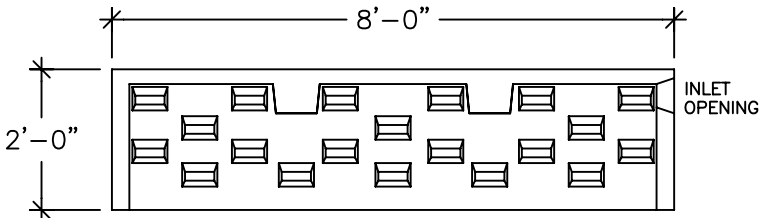
GALLEY DESIGN SPECIFICATIONS  
CONFORMS TO LATEST:  
ASTM DESIGNATION C913

NOTES:

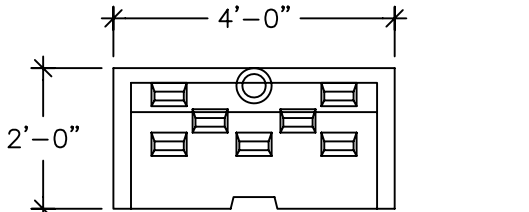
1. PIPE INLET AND OUTLET LOCATIONS HAVE POLYLOK II PIPE SEALS, TYPICAL. CUSTOM KNOCKOUTS CAN BE CAST ON REQUEST.
2. REINFORCING STEEL DEFORMED BARS CONFORM TO LATEST ASTM SPECIFICATION A615.
3. CONCRETE COMPRESSIVE STRENGTH- 4000 PSI AT 28 DAYS.
4. METHOD OF MANUFACTURE: WET CAST.
5. SECTION IS MONOLITHIC.



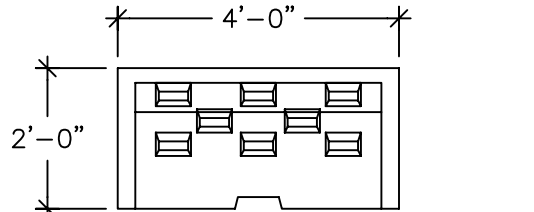
TOP VIEW  
(ROOF SLAB THICKNESS IS 3")



SIDE VIEW  
(WALL THICKNESS IS 3")  
(ROOF THICKNESS IS 3",5" @ BEAMS)



END VIEW (END SECTION)  
(WALL THICKNESS IS 3")  
(ROOF THICKNESS IS 3",5" @ BEAMS)



END VIEW (CENTER SECTION)  
(WALL THICKNESS IS 3")  
(ROOF THICKNESS IS 3",5" @ BEAMS)

WEIGHT CHART

PRODUCT	APPROX WEIGHT
24" GALLEY	2700 LBS.

LEACHING DATA

FLOW LINE (INCHES)	LEACHING (Gall/LF)	LEACHING (FT <sup>2</sup> /UNIT)	INSIDE CAPACITY (GALLONS)
19	6.8	54.4	340



**UNITED CONCRETE PRODUCTS INC.**

173 CHURCH STREET  
YALESVILLE, CT 06492

TEL. 800 234-3119  
(203) 269-3119

FAX. (203) 265-4941