

**NEW YORK STATE
DEPARTMENT OF**



**ENVIRONMENTAL
CONSERVATION**

This fact sheet serves to announce the beginning of remedial construction to address contamination at Operable Unit 3 of the Amtrak Sunnyside Yard under the New York State Superfund Program.

Document Repositories:

Queens Public Library

Sunnyside Branch
43-06 Greenpoint Avenue
Long Island City, NY 11104
Call 718-784-3033 for Hours

NYSDEC Region 2 Office

Hunters Point Plaza
47-40 21st Street
Long Island City, NY 11101
(call in advance – 718-482-4608)
Hours: M-F 7:30 AM to 3:30 PM

Project Contacts:

Shaun Bollers
NYSDEC, Region 2 Office
47-40 21st Street
Long Island City, New York 11101
(718) 482-4608
snboller@gw.dec.state.ny.us

For Public Health questions:

Christopher Doroski,
Public Health Specialist
NYSDOH
547 River Street
Troy, NY 12180
(800) 458-1158 x 27880

For additional information visit:

<http://www.dec.ny.gov/chemical/8439.html>

FACT SHEET **JULY 2008**

**Amtrak Sunnyside Yard, Operable Unit 3
39-29 Honeywell Street, Queens, NY
Site Code 241006**

**Remedial Action to Address Contamination
to Begin**

The New York State Department of Environmental Conservation (NYSDEC), working cooperatively with the New York State Department of Health (NYSDOH), announces the start of remedial construction at Operable Unit 3 (OU-3) within Amtrak Sunnyside Yard (known as 'the Site') (see attached map). The Site is enrolled in the New York State Superfund Program. Amtrak will soon begin remedial activities to address contamination at the site with oversight provided by NYSDEC. Construction is expected to last between four to six months.

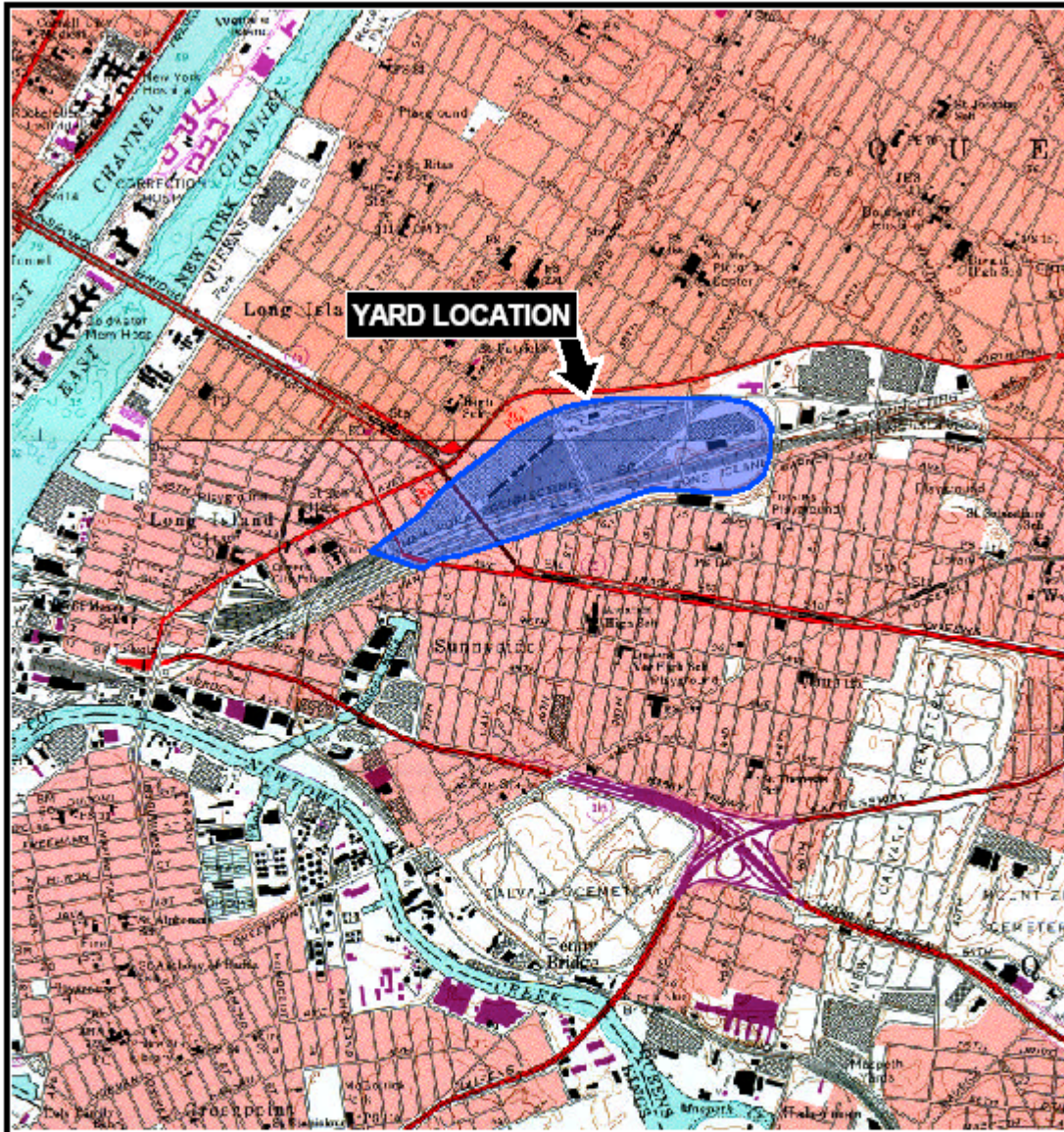
Site Description: The Amtrak Sunnyside Yard is a railroad maintenance and storage facility that currently encompasses approximately 133 acres, and it is currently undergoing capital improvements. To allow these improvements to continue prior to the conclusion of a site-wide Remedial Investigation (RI), the remedial effort was divided into six (6) operable units (OUs). OU-3 is the subject of this Fact Sheet and consists of the Polychlorinated Biphenyls (PCB's) contaminated Separate Phase Hydrocarbon (SPH) plume, the contaminated soils above groundwater, and the contaminated underground structures in an area in the north-east part of the site. This area includes the now-abandoned Engine House, Metro-Shop, and the former locomotive fueling area.

Investigations to date: The Yard has widespread contamination from PCBs, petroleum and lead. Seventeen areas of concern were initially identified based upon prior use of the Site and the release of contaminants. A free product plume of PCBs laced petroleum (referred to in all documents as SPH) is known to have been present in OU-3 since 1985. In 1994, this plume was estimated to have been three acres in size. Based on data collected in the RI and revised during the Feasibility Study (FS), the mobile portion (thickness 0.1 ft or greater) of this historic SPH plume is approximately one-half acre in size. Visible surficial petroleum is present in a one-half acre area down to a maximum of one foot below the surface. PCBs and lead above the proposed site specific clean up numbers are present in one location each. PCBs and petroleum are also present in underground structures.

Remedial Action: The main components of the selected remedy consist of excavation and off-site disposal of the SPH plume and associated hydrocarbon-impacted soil followed by bio-remediation of the residual SPH present in soils to a depth of 10 feet, and excavation and off-site disposal of PCB and lead impacted-soil. Additionally, the remedy includes removal of visible petroleum contaminated soil; two exterior and four interior engine house pits; three fuel pump vaults; and nine Underground Storage Tanks (USTs). All excavations will be backfilled with soil/fill/ballast which meets the site specific cleanup levels.

Next Steps: The contractor has mobilized and completed preparation for the remedial actions described above. Remedial construction is scheduled to start in July and last until October 2008. At the completion of this remedial action, Amtrak will be required to 1) develop a Residual SPH Contingency Plan to address areas where the thickness of the SPH lies between 0.1 foot and 0.01 foot; 2) develop a Site Management Plan; 3) register an Environmental Easement; and 4) continue to monitor groundwater downgradient of the site to evaluate the effectiveness of the remediation.

Site Location Map



SOURCE:
CENTRAL PARK AND BROOKLYN, NEW YORK
QUADRANGLE 7.5 MINUTE SERIES (TOPOGRAPHIC)



QUADRANGLE
LOCATION



Title:

LOCATION OF SITE

PROPOSED REMEDIAL ACTION PLAN
SUNNYSIDE YARD, QUEENS, NEW YORK

Prepared for:

AMTRAK



Compiled by: J.P.	Date: 07NOV05	FIGURE 1
Prepared by: G.M.	Scale: 1"=2000'	
Project Mgr.: H.G.	Office: NY	
File No.: AM4516601.CDR	Project No.: 05546711	