

#2105197 Algonquin Middle School – Scope of Work

Contact Information:

Dr. James Franchini, Superintendent: 518-674-7066, fanchinij@apcsd.org

Aaron Heffner, Supt of Buildings and Grounds: 518-669-4050 (direct), 518-674-7058 (office),
heffnera@apcsd.org

Susan Edwards: 518-402-9779

Eric Hausamann: 518-402-9759

Justin Deming: 518-402-7882

Rich Elder, County DOH: 518-270-2632, relder@renesco.com

Todd Rollend, Aztech/LaBella – environmental scientist, primary field staff: 518-365-3333,
trollend@labellapc.com

Bill Toran, Aztech/LaBella – project geologist: 518-470-7158, btoran@labellapc.com

Michael Carr, Aztech/LaBella –project geologist: 518-369-7822, mcarr@labellapc.com

Preliminary Activities:

- GPR Survey – Completed 11/3 -11/4, 22 boring locations marked out and all utilities in the vicinity of the school
- Access agreement signed by the Superintendent on 10/28

Field Work:

It is requested that all staff check in/out with the Algonquin Middle School Front Office.

Drilling

The drilling is scheduled for 11/10 – 11/16 (excluding weekends) and will include the following:

- CAMP stations, one upwind and one downwind
- Soft dig techniques will be employed at each of the 22 cleared boring locations
- Soil borings will be installed to ~15ft. A representative number of borings across the site may be advanced further than 15 ft to determine the top of bedrock.
 - o 3 soil samples will be collected at each boring location for PFAS analysis: 0-2” below vegetative cover, 2-12”, and 1 at depth at terminal soil boring extent, refusal, or ~1 ft above the water table (whichever is encountered first)
 - o Soil cores will be logged by a geologist or environmental scientist
- If groundwater is encountered, up to 10 locations can be selected for the installation of a 1” temporary well.
 - o Groundwater grab samples will be analyzed for PFAS and VOCs
 - o Water quality parameters will be recorded at time of sampling. Purging to achieve stable parameters is not necessary for this phase of work.
 - o Temporary wells will be pulled after sampling and grouted to the surface

- Drill cuttings will be returned to the respective borehole and/or spread in the vicinity of the borehole (unless grossly contaminated)
- Decon equipment between boring locations

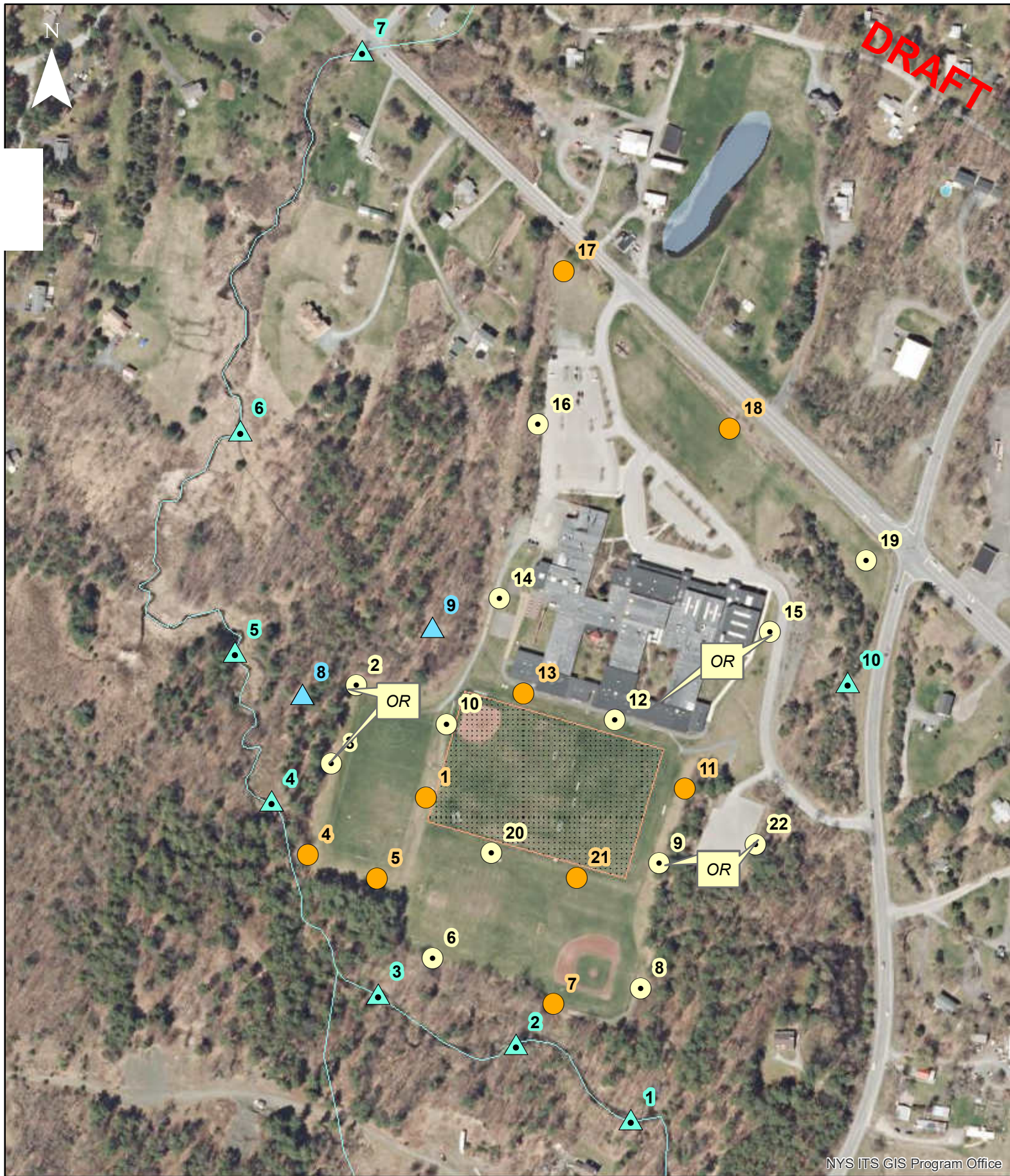
Surface water/sediment sampling

Collection of surface water/sediment samples from the adjacent stream will occur during 11/10-11/16.

- 10 locations have been identified on the sampling figure. Exact locations may be adjusted as needed.

Table 1 Analytical Summary for Algonquin Middle School PFAS Assessment

Analytes	Method	Matrix	Sample Quantity	Field Duplicate	MS	MS D	Equipment Blank	Trip Blank	Total
Soil Borings (3 depth intervals at up to 25 locations)									
PFAS	EPA Method 537.1	SO	75	3	3	3	5		89
Surface Water (Up to 10 locations)									
PFAS	EPA Method 537.1	WS	10	1	1	1	1		14
Sediment (Up to 10 locations)									
PFAS	EPA Method 537.1	SED	10	1	1	1			13
Groundwater (Up to 10 locations)									
TCL VOCs	SW-846 8260C	WG	10	1	1	1		1	14
PFAS	EPA Method 537.1	WG	10	1	1	1	2		15
Decontamination Water									
PFAS	EPA Method 537.1		1	0			0	0	1



Legend

