

**Landfill Gas and Control System Monitoring
Town of Huntington East Northport Landfill
East Northport, New York
November, 2006**

Prepared for:

**Town of Huntington Department of Environmental Waste Management
100 Main Street
Huntington, New York 11743**

Prepared by:

**R & C Formation, Ltd.
705 Bedford Ave., Suite 2B
Bellmore, New York 11710**

TABLE OF CONTENTS

	Page
Introduction	1
Scope of Work	1
Summary of Results	2
General	2
Monitoring Wells	2
LFG Control Wells	2
Condensate Traps	3
Discussion	3
Methane Monitoring Data	3
Physical Operating Condition	3
Recommendations	4

Figure

Following Page

Figure 1. Landfill Gas Monitoring and Control System	1
--	---

Summary Tables

Following Page

Table 1. Landfill Gas Monitoring Well Data.....	4
Table 2. Landfill Gas Control Well Data	4
Table 3. Summary of Methane Detections	4
Table 4. Landfill Gas Control Well Methane Data	4

Appendix

Appendix 1. Landfill Gas Control Well Vacuum Data	
---	--

**Landfill Gas and Control System Monitoring
Town of Huntington East Northport Landfill
East Northport, New York
November, 2006**

Introduction

This report presents the results of November, 2006 landfill gas and control system monitoring activities performed at the Town of Huntington East Northport Landfill, as stipulated by the New York State Department of Environmental Conservation.

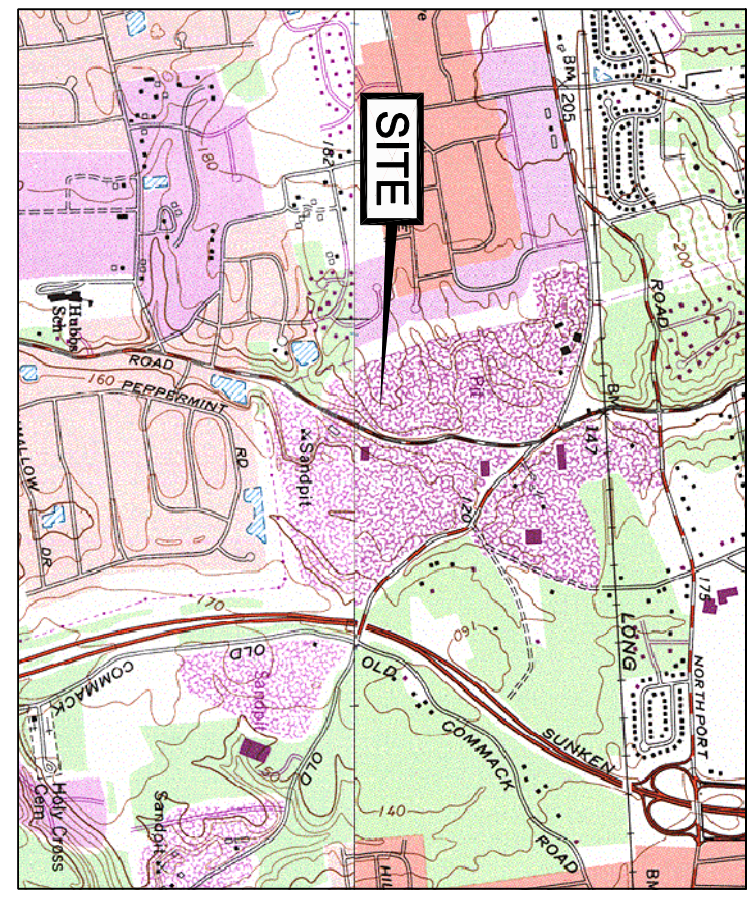
The primary landfill gas migration control system consists of thirty active landfill gas control wells connected - via a single header pipe forming a complete loop around the 44 acre East Northport Landfill - to one blower station. Landfill gas monitoring wells (consisting of 3-4 probes screened from approximately 5-70 feet below grade), situated outside of the aforementioned header pipe, provide a means to verify the control system's efficacy. Separate landfill gas control and monitoring systems are located at adjacent Animal Control and Resource Recovery Facilities.

The landfill area and pertinent components of the landfill gas monitoring and control system are depicted in Figure 1. The scope-of-work completed (per our agreement with the Town of Huntington Department of Environmental Waste Management dated August 15, 2003) precedes a summary of results. A discussion of methane monitoring data - with an emphasis on trends and occurrence - and the system's physical and operating condition follows.

Scope-of-Work

The scope-of-work includes performance of the following on a monthly basis:

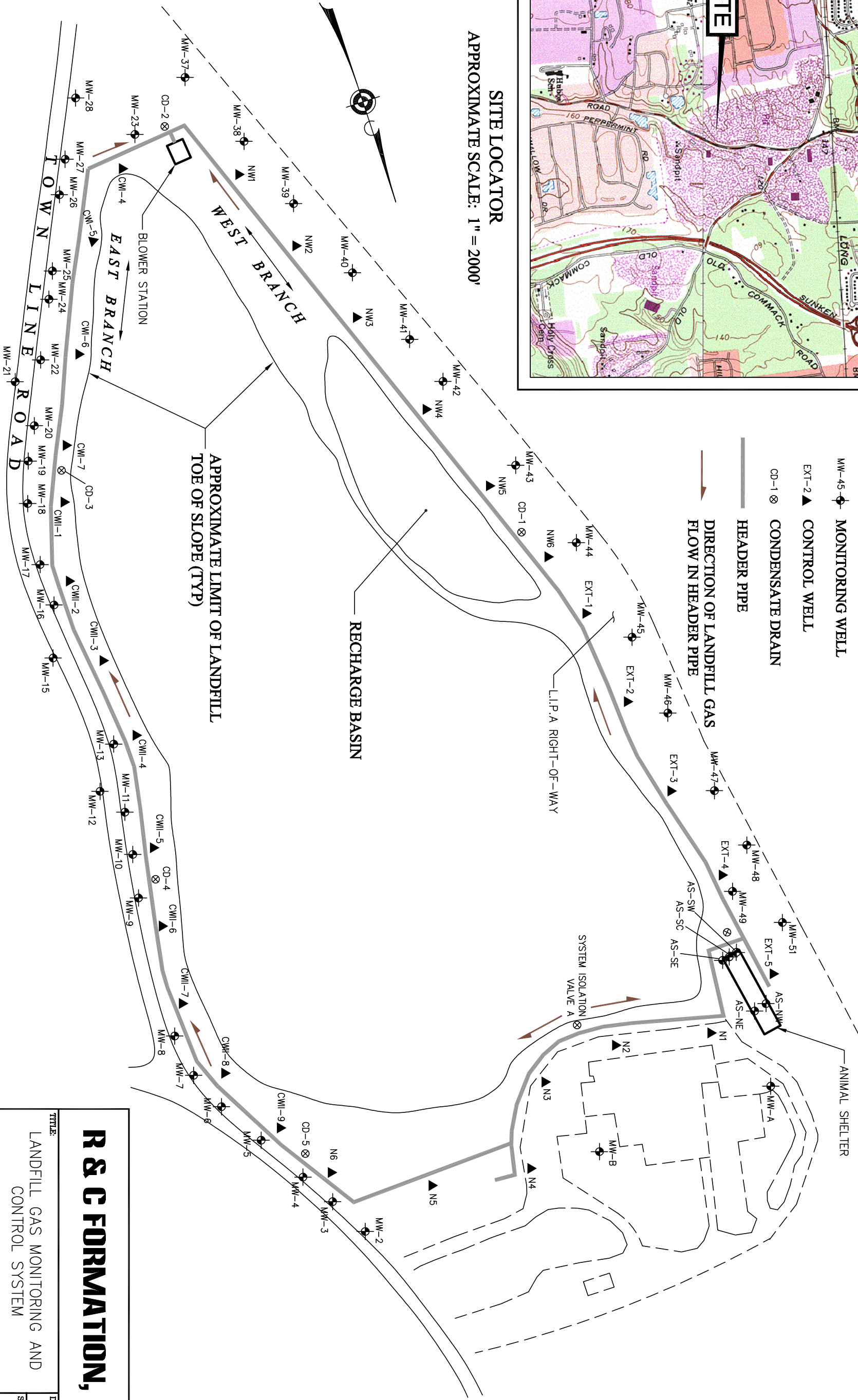
- 1) Monitoring of all probes in 43 landfill monitoring wells and up to 5 probes around the Town Animal Control Facility for methane gas and gas pressure.
- 2) Monitoring of 30 methane control wells and blower station for temperature, flow rate, vacuum, methane and oxygen (balance of the control system to be checked and adjustment to wells and to blower intake made, if necessary).



SITE

SITE LOCATOR
 APPROXIMATE SCALE: 1" = 2000'

- LEGEND**
- MW-45 ◉ MONITORING WELL
 - EXT-2 ▲ CONTROL WELL
 - CD-1 ⊗ CONDENSATE DRAIN
 - HEADER PIPE
 - DIRECTION OF LANDFILL GAS FLOW IN HEADER PIPE



R & C FORMATION, LTD.

TITLE:
 LANDFILL GAS MONITORING AND CONTROL SYSTEM

FIGURE: **1**
 TOWN OF HUNTINGTON
 EAST NORTHPORT LANDFILL
 EAST NORTHPORT, NY

DATE:
 9/22/03

DRAWING NO:
 01006-1A
 APPR. BY:
 B.C.

- 3) Examination of 5 condensate traps in the control system for proper operation and water accumulation.
- 4) Noting of any problems, damage, missing parts etc. at each monitoring well, methane control well, condensate trap, Animal Control Facility probes and blower station.

Summary of Results

General

Reported monthly monitoring activities were performed November 29, 2006. Climatic conditions for the monitoring period are as follows:

Temperature: 55.1 (°F); Barometric Pressure: 30.36 (in. Hg); Relative Humidity: 81.0%; Precipitation: 0.00 inches; Wind Speed & Direction: 5.0 mph, southeasterly.

Monitoring Wells

Table 1 presents a summary of measured and recorded landfill gas monitoring well data. As shown on Table 1, methane was not detected throughout the monitoring network.

LFG Control Wells

A summary of measured and recorded landfill gas control well data - including values pertaining to the system's blower station, where 2 "inlet" measuring points (Blower Station 1 & 2) and 1 "outlet" measuring point (Blower Station 3) are located - is presented on Table 2. As shown on Table 2, control well vacuum values (i.e., negative pressure), a direct indicator of the system's balance, range from 0.0 - -5.0 (in. H₂O). "Extracted" methane values range from 0.0 - 5.0%.

Condensate Traps

Standing water measured within condensate traps CD-1 (1.3 feet), CD-2 (2.9 feet), CD-3 (4.4 feet), CD-4 (4.9 feet) and CD-5 (1.0 feet) was evacuated, as per usual, upon the completion of monitoring activities.

Discussion

Methane Monitoring Data

Table 3 presents a summary of measured and recorded methane concentrations detected at landfill gas monitoring wells throughout the period-of-record from October, 1999 through November, 2006. As shown, methane has been detected sporadically and at low levels at 14 monitoring wells. The most elevated concentration of methane (5.0%) detected throughout the entire landfill gas monitoring well network was recorded at Animal Control Facility monitoring well AS-NE during March, 2001 monitoring activities.

As previously reported, methane has not been detected at primary landfill gas migration control system monitoring wells since June, 2002, when a negligible concentration of 0.1% was recorded at monitoring well MW-49. The sporadic nature of low-level methane detections indicates that landfill gas control systems relative to both the Animal Control Facility and East Northport Landfill continue to function effectively.

A summary of methane concentrations detected at landfill gas control wells during the period-of-record from October, 1999 through November, 2006 is presented on Table 4. As shown on Table 4, with the exception of minor anomalies (e.g., control well N-2: October, 2001; February, 2002; April, 2006), reported values are generally consistent throughout the 86 month period.

Physical and Operating Condition

As evidenced by measured and recorded landfill gas monitoring data summarized above, the Town of Huntington East Northport Landfill primary landfill gas control system continues to successfully negate the off-site migration of methane. Vacuum values remain comparatively low at the northern-most portion of the system, however, this condition has existed throughout the monitoring period-of-record (as indicated by historic control well vacuum data presented in Appendix 1).

The physical condition of system monitoring wells and control wells is noted on Tables 1 and 2, respectively. As shown on Table 1, monitoring well MW-39 is destroyed (impact with heavy machinery indicated) and probe risers in monitoring wells MW-45 and MW-46 are damaged. With the exception of the aforementioned, monitoring and control wells are in good condition.

Blower station pump # 1 was in operation during November monitoring activities and all control wells continue to be set in the full-open-position. This full-open-position will be maintained for an evaluation period and modified if/as necessary.

Recommendations

- * In the event that methane is detected at any monitoring well associated with the primary landfill gas migration control system, recommence the monitoring of off and on-site structures.
- * Assess occurrence of methane versus landfill area (i.e., identify dominant landfill gas production zones).
- * Continue assessment of potential impact of all control valves at full-open-position on system-wide vacuum/methane levels.

Table 1
Landfill Gas Monitoring Well Data
Town of Huntington East Northport Landfill, East Northport, New York
Measured November 29, 2006

Well No.	Probe Pressure (in. H ₂ O)				Methane 0-100% (Volume)				Condition
	A	B	C	D	A	B	C	D	
MW-A	-0.1	-0.1			0.0	0.0			
MW-B	-0.1	-0.2			0.0	0.0			
MW-2	0.0	0.0	0.0	0.0	0.0	0.0	0.0	0.0	
MW-3	-0.1	-0.1	0.0	0.0	0.0	0.0	0.0	0.0	
MW-4	-0.2	-0.1	0.0	-0.1	0.0	0.0	0.0	0.0	
MW-5	0.0	-0.1	-0.1		0.0	0.0	0.0		
MW-6	0.0	0.0	0.0		0.0	0.0	0.0		
MW-7	0.0	0.0	0.0		0.0	0.0	0.0		
MW-8	-0.1	-0.1	-0.1		0.0	0.0	0.0		
MW-9	-0.1	-0.1	-0.1		0.0	0.0	0.0		
MW-10	-0.2	0.0	-0.2	-0.2	0.0	0.0	0.0	0.0	
MW-11	0.0	0.0	0.0	0.0	0.0	0.0	0.0	0.0	
MW-12	0.0	0.0	0.0		0.0	0.0	0.0		
MW-13	-0.2	0.0	0.1		0.0	0.0	0.0		
MW-15	-0.1	-0.1	-0.1		0.0	0.0	0.0		
MW-16	-0.2	-0.2	-0.1		0.0	0.0	0.0		
MW-17	-0.2	0.0	-0.2		0.0	0.0	0.0		
MW-18	0.0	0.0	-0.3		0.0	0.0	0.0		
MW-19	-0.4	-0.3	0.0	-0.4	0.0	0.0	0.0	0.0	
MW-20	0.0	-0.4	-0.1		0.0	0.0	0.0		
MW-21	-0.2	-0.2	-0.3	-0.1	0.0	0.0	0.0	0.0	
MW-22	-0.1	-0.3	-0.2		0.0	0.0	0.0		

Table 1 (continued)

Well No.	Probe Pressure (in. H ₂ O)				Methane 0-100% (Volume)				Condition
	A	B	C	D	A	B	C	D	
MW-23	-2.0	-0.4	-0.2	-3.0	0.0	0.0	0.0	0.0	
MW-24	-0.1	0.0	0.1		0.0	0.0	0.0		
MW-25	-0.6	-0.6	-0.1		0.0	0.0	0.0		
MW-26	-0.2	-0.2	-0.2	-0.2	0.0	0.0	0.0	0.0	
MW-27	0.0	-0.1	-0.1		0.0	0.0	0.0		
MW-28	0.0	0.0	0.0		0.0	0.0	0.0		
MW-37	-0.1	-0.1	-0.1		0.0	0.0	0.0		
MW-38	-0.1	-0.1	-0.2		0.0	0.0	0.0		
MW-39	NA	NA	NA		NA	NA	NA		Well Destroyed
MW-40	0.0	0.0	0.0	-0.1	0.0	0.0	0.0	0.0	
MW-41	-0.1	0.0	-0.1		0.0	0.0	0.0		
MW-42	0.0	0.0	-0.1		0.0	0.0	0.0		
MW-43	0.0	-0.1	-0.1		0.0	0.0	0.0		
MW-44	0.0	0.0	0.0		0.0	0.0	0.0		
MW-45	NA	0.0	0.0		NA	0.0	0.0		Riser Damage
MW-46	0.0	-0.1	0.0	NA	0.0	0.0	0.0	NA	Riser Damage
MW-47	0.0	0.0	0.0		NA	NA	NA		
MW-48	0.0	0.0	-0.1		0.0	0.0	0.0		
MW-49	0.0	0.0	-0.1		0.0	0.0	0.0		
MW-51	0.0	-0.1	0.0		0.0	0.0	0.0		
AS-NW	0.0				0.0				
AS-NE	0.0				0.0				
AS-SW	0.0				0.0				
AS-SC	-0.1				0.0				
AS-SE	0.0				0.0				

A - Shallow Probe

B - Middle Probe

C - Deep Probe

D - Deepest Probe

Shading indicates the well is not equipped with that particular probe.

NA: Not Available

Table 2
Landfill Gas Control Well Data
Town of Huntington East Northport Landfill, East Northport, New York
Measured November 29, 2006

Well No.	Temp (°F)	Flow Rate (ft³/min)	Vacuum (in. H₂O)	Methane 0-100 % (Volume)	Oxygen % in Air	Condition
CWI-4	62.4	240.0	-3.9	0.1	19.2	
CWI-5	66.7	66.5	-4.4	0.8	18.1	
CWI-6	71.7	53.5	-4.7	1.0	17.4	
CWI-7	70.6	55.0	-4.5	2.2	17.6	
CWII-1	78.9	54.2	-4.3	4.0	14.4	
CWII-2	84.3	73.0	-4.2	1.6	15.1	
CWII-3	77.3	38.9	-4.3	0.0	15.3	
CWII-4	79.1	44.2	-5.0	5.0	13.9	
CWII-5	74.5	41.2	-0.3	0.8	16.2	
CWII-6	72.5	40.6	-1.7	0.9	15.9	
CWII-7	67.3	31.4	-1.5	0.1	17.4	
CWII-8	66.7	0.0	0.0	0.0	20.5	
CWII-9	72.6	21.2	-0.9	0.4	18.2	
NW-1	56.5	18.5	-3.2	0.0	20.3	
NW-2	57.2	95.5	4.2	0.0	20.3	
NW-3	58.6	115.0	-4.0	0.0	19.8	
NW-4	59.2	126.0	-4.0	0.0	19.9	
NW-5	60.2	192.0	-3.6	0.0	20.6	
NW-6	59.2	152.0	-3.1	0.0	20.1	
Ext-1	59.5	31.6	-3.6	0.0	20.6	
Ext-2	60.7	91.0	-3.4	0.0	18.5	
Ext-3	63.6	72.5	-3.3	1.2	15.3	
Ext-4	65.2	40.3	-3.2	0.4	14.6	
Ext-5	60.6	172.0	-2.4	0.0	19.3	
N-1	63.4	3.0	-0.2	0.0	20.3	
N-2	76.8	11.9	-0.5	3.0	6.0	
N-3	56.1	3.5	-0.1	0.0	20.4	
N-4	59.6	1.2	-0.1	0.0	20.4	
N-5	68.0	3.6	-0.1	0.0	20.9	
N-6	NA	NA	NA	NA	NA	
Blower Station - 1	59.6	1970.0	-7.3	0.7	18.4	
Blower Station - 2	59.1	3550.0	-18.1	0.7	18.4	
Blower Station - 3	69.6	4320.0	1.8	0.7	18.4	

Table 3
Summary of Methane Detections
Landfill Gas Monitoring Wells
Town of Huntington East Northport Landfill, East Northport, New York
for period of record between October, 1999 and November, 2006

Well	10/99	11/99	12/99	1/00	2/00	3/00	4/00	5/00	6/00	7/00	8/00	9/00	10/00	11/00	12/00	1/01
MW-7C	0.0	0.0	0.0	0.0	na	0.0	0.0	0.0	0.0	0.1	na	0.0	0.0	0.0	0.0	0.0
MW-8C	0.0	0.0	0.0	0.0	na	0.0	0.0	0.0	0.0	0.1	na	0.0	0.0	0.0	0.0	0.0
MW-9A	0.0	0.0	0.2	0.0	na	0.0	0.0	0.0	0.0	0.0	na	0.0	0.0	0.0	0.0	0.0
MW-9B	0.1	0.4	0.2	0.8	na	0.0	0.0	0.0	0.0	0.1	na	0.0	0.0	0.0	0.0	0.0
MW-9C	0.0	0.3	0.2	0.9	na	0.0	0.0	0.0	0.0	0.0	na	0.0	0.0	0.0	0.0	0.0
MW-11A	0.0	0.0	0.0	0.0	na	0.0	0.0	0.1	0.0	0.0	na	0.0	0.0	0.0	0.0	0.0
MW-12A	0.0	0.0	0.0	0.0	na	0.0	0.0	0.0	0.0	0.1	na	0.0	0.0	0.0	0.0	0.0
MW-12C	0.0	0.0	0.0	0.0	na	0.0	0.0	0.0	0.0	0.1	na	0.0	0.0	0.0	0.0	0.0
MW-18A	0.4	0.0	0.0	0.0	na	0.0	0.0	0.0	0.0	0.0	na	0.0	0.0	0.0	0.0	0.0
MW-19A	0.0	0.0	0.3	0.4	na	0.0	0.0	0.0	0.0	0.0	na	0.0	0.0	0.0	0.0	0.0
MW-24C	0.0	0.0	0.0	0.0	na	0.0	0.0	0.0	0.3	0.0	na	0.0	0.0	0.0	0.0	0.0
MW-38B	1.0	0.0	0.0	0.0	na	0.0	0.0	0.0	0.0	0.0	na	0.0	0.0	0.0	0.0	0.0
MW-39A	0.0	0.2	0.0	0.0	na	0.0	0.0	0.0	0.0	0.0	na	0.0	0.0	0.0	0.0	0.0
MW-49A	0.0	0.0	0.0	0.0	na	0.0	0.0	0.0	0.0	0.0	na	0.1	0.0	0.0	0.0	0.0
MW-49B	0.0	0.0	0.0	0.0	na	0.0	0.0	0.0	0.0	0.0	na	0.0	0.0	0.0	0.0	0.0
MW-49C	0.0	0.0	0.0	0.0	na	0.0	0.0	0.0	0.0	0.0	na	0.1	0.0	0.0	0.0	0.0
AS-SW	0.0	0.0	0.0	0.0	na	0.0	0.0	0.0	0.0	0.0	na	0.0	1.0	1.0	0.0	0.0
AS-SC	0.0	0.0	0.0	0.0	na	0.0	0.0	0.0	0.0	0.0	na	0.2	0.0	0.0	0.0	0.0
AS-NE	0.0	0.0	0.0	0.0	na	0.0	0.0	0.0	0.0	0.0	na	0.0	0.0	0.0	0.0	0.0

na - not available

Measured in % Volume

Table 3 (continued)

Well	2/01	3/01	4/01	5/01	6/01	7/01	8/01	9/01	10/01	11/01	12/01	1/02	2/02	3/02	4/02	5/02
MW-7C	0.0	0.0	0.0	0.0	0.0	0.0	0.0	0.0	0.0	0.0	0.0	0.0	0.0	0.0	0.0	0.0
MW-8C	0.0	0.0	0.0	0.0	0.0	0.0	0.0	0.0	0.0	0.0	0.0	0.0	0.0	0.0	0.0	0.0
MW-9A	0.0	0.0	0.0	0.0	0.0	0.0	0.0	0.0	0.0	0.0	0.0	0.0	0.0	0.0	0.0	0.0
MW-9B	0.0	0.0	0.0	0.0	0.0	0.0	0.0	0.0	0.0	0.0	0.0	0.0	0.0	0.0	0.0	0.0
MW-9C	0.0	0.0	0.0	0.0	0.0	0.0	0.0	0.0	0.0	0.0	0.0	0.0	0.0	0.0	0.0	0.0
MW-11A	0.0	0.0	0.0	0.0	0.0	0.0	0.0	0.0	0.0	0.0	0.0	0.0	0.0	0.0	0.0	0.0
MW-12A	0.0	0.0	0.0	0.0	0.0	0.0	0.0	0.0	0.0	0.0	0.0	0.0	0.0	0.0	0.0	0.0
MW-12C	0.0	0.0	0.0	0.0	0.0	0.0	0.0	0.0	0.0	0.0	0.0	0.0	0.0	0.0	0.0	0.0
MW-18A	0.0	0.0	0.0	0.0	0.0	0.0	0.0	0.0	0.0	0.0	0.0	0.0	0.0	0.0	0.0	0.0
MW-19A	0.0	0.0	0.0	0.0	0.0	0.0	0.0	0.0	0.0	0.0	0.0	0.0	0.0	0.0	0.0	0.0
MW-24C	0.0	0.0	0.0	0.0	0.0	0.0	0.0	0.0	0.0	0.0	0.0	0.0	0.0	0.0	0.0	0.0
MW-38B	0.0	0.0	0.0	0.0	0.0	0.0	0.0	0.0	0.0	0.0	0.0	0.0	0.0	0.0	0.0	0.0
MW-39A	0.0	0.0	0.0	0.0	0.0	0.0	0.0	0.0	0.0	0.0	0.0	0.0	0.0	0.0	0.0	0.0
MW-49A	0.0	0.0	0.0	0.0	0.0	0.0	0.0	0.0	0.0	0.0	0.0	0.0	0.0	0.0	0.0	0.0
MW-49B	0.0	0.0	0.0	0.0	0.0	0.0	0.0	0.0	0.0	0.0	0.0	0.0	0.0	0.0	0.0	0.0
MW-49C	0.0	0.0	0.0	0.0	0.0	0.0	0.0	0.0	0.0	0.0	0.0	0.0	0.0	0.0	0.0	0.0
AS-SW	0.0	0.0	0.0	0.0	0.0	0.0	0.0	0.0	0.0	0.0	0.0	0.0	0.0	0.0	0.0	0.0
AS-SC	0.0	0.0	0.0	0.0	0.0	0.0	0.0	0.0	0.0	0.0	0.0	0.0	0.0	0.0	0.0	0.0
AS-NE	0.0	5.0	0.0	0.0	0.4	0.0	0.0	0.0	0.0	2.2	0.0	0.0	0.0	0.0	0.0	0.0

na - not available

Measured in % Volume

Table 3 (continued)

Well	6/02	7/02	8/02	9/02	10/02	11/02	12/02	1/03	2/03	3/03	4/03	5/03	6/03	7/03	8/03	9/03
MW-7C	0.0	0.0	0.0	0.0	0.0	0.0	0.0	0.0	0.0	0.0	0.0	0.0	0.0	0.0	0.0	0.0
MW-8C	0.0	0.0	0.0	0.0	0.0	0.0	0.0	0.0	0.0	0.0	0.0	0.0	0.0	0.0	0.0	0.0
MW-9A	0.0	0.0	0.0	0.0	0.0	0.0	0.0	0.0	0.0	0.0	0.0	0.0	0.0	0.0	0.0	0.0
MW-9B	0.0	0.0	0.0	0.0	0.0	0.0	0.0	0.0	0.0	0.0	0.0	0.0	0.0	0.0	0.0	0.0
MW-9C	0.0	0.0	0.0	0.0	0.0	0.0	0.0	0.0	0.0	0.0	0.0	0.0	0.0	0.0	0.0	0.0
MW-11A	0.0	0.0	0.0	0.0	0.0	0.0	0.0	0.0	0.0	0.0	0.0	0.0	0.0	0.0	0.0	0.0
MW-12A	0.0	0.0	0.0	0.0	0.0	0.0	0.0	0.0	0.0	0.0	0.0	0.0	0.0	0.0	0.0	0.0
MW-12C	0.0	0.0	0.0	0.0	0.0	0.0	0.0	0.0	0.0	0.0	0.0	0.0	0.0	0.0	0.0	0.0
MW-18A	0.0	0.0	0.0	0.0	0.0	0.0	0.0	0.0	0.0	0.0	0.0	0.0	0.0	0.0	0.0	0.0
MW-19A	0.0	0.0	0.0	0.0	0.0	0.0	0.0	0.0	0.0	0.0	0.0	0.0	0.0	0.0	0.0	0.0
MW-24C	0.0	0.0	0.0	0.0	0.0	0.0	0.0	0.0	0.0	0.0	0.0	0.0	0.0	0.0	0.0	0.0
MW-38B	0.0	0.0	0.0	0.0	0.0	0.0	0.0	0.0	0.0	0.0	0.0	0.0	na	0.0	0.0	0.0
MW-39A	0.0	0.0	0.0	0.0	0.0	0.0	0.0	0.0	0.0	0.0	0.0	0.0	na	0.0	0.0	0.0
MW-49A	0.1	0.0	0.0	0.0	0.0	0.0	0.0	0.0	0.0	0.0	0.0	0.0	na	0.0	0.0	0.0
MW-49B	0.1	0.0	0.0	0.0	0.0	0.0	0.0	0.0	0.0	0.0	0.0	0.0	na	0.0	0.0	0.0
MW-49C	0.0	0.0	0.0	0.0	0.0	0.0	0.0	0.0	0.0	0.0	0.0	0.0	na	0.0	0.0	0.0
AS-SW	0.0	0.0	0.0	0.0	0.0	0.0	0.0	0.0	na	0.0	0.0	0.0	na	0.0	0.0	0.0
AS-SC	0.0	0.0	0.0	0.0	0.0	0.0	0.0	0.0	na	0.0	0.0	0.0	na	0.0	0.0	0.0
AS-NE	0.0	0.5	0.0	0.0	0.0	0.0	0.0	0.0	0.0	0.0	0.1	0.0	na	0.0	0.0	0.0

na - not available

Measured in % Volume

Table 3 (continued)

Well	10/03	11/03	12/03	1/04	2/04	3/04	4/04	5/04	6/04	7/04	8/04	9/04	10/04	11/04	12/04	1/05
MW-7C	0.0	0.0	0.0	0.0	0.0	0.0	0.0	0.0	0.0	0.0	0.0	0.0	0.0	0.0	0.0	0.0
MW-8C	0.0	0.0	0.0	0.0	0.0	0.0	0.0	0.0	0.0	0.0	0.0	0.0	0.0	0.0	0.0	0.0
MW-9A	0.0	0.0	0.0	0.0	0.0	0.0	0.0	0.0	0.0	0.0	0.0	0.0	0.0	0.0	0.0	0.0
MW-9B	0.0	0.0	0.0	0.0	0.0	0.0	0.0	0.0	0.0	0.0	0.0	0.0	0.0	0.0	0.0	0.0
MW-9C	0.0	0.0	0.0	0.0	0.0	0.0	0.0	0.0	0.0	0.0	0.0	0.0	0.0	0.0	0.0	0.0
MW-11A	0.0	0.0	0.0	0.0	0.0	0.0	0.0	0.0	0.0	0.0	0.0	0.0	0.0	0.0	0.0	0.0
MW-12A	0.0	0.0	0.0	0.0	0.0	0.0	0.0	0.0	0.0	0.0	0.0	0.0	0.0	0.0	0.0	0.0
MW-12C	0.0	0.0	0.0	0.0	0.0	0.0	0.0	0.0	0.0	0.0	0.0	0.0	0.0	0.0	0.0	0.0
MW-18A	0.0	0.0	0.0	0.0	0.0	0.0	0.0	0.0	0.0	0.0	0.0	0.0	0.0	0.0	0.0	0.0
MW-19A	0.0	0.0	0.0	0.0	0.0	0.0	0.0	0.0	0.0	0.0	0.0	0.0	0.0	0.0	0.0	0.0
MW-24C	0.0	0.0	0.0	0.0	0.0	0.0	0.0	0.0	0.0	0.0	0.0	0.0	0.0	0.0	0.0	0.0
MW-38B	0.0	0.0	0.0	0.0	0.0	0.0	0.0	0.0	0.0	0.0	0.0	0.0	0.0	0.0	0.0	0.0
MW-39A	0.0	0.0	0.0	0.0	0.0	0.0	0.0	0.0	0.0	0.0	0.0	0.0	0.0	0.0	0.0	0.0
MW-49A	0.0	0.0	0.0	0.0	0.0	0.0	0.0	0.0	0.0	0.0	0.0	0.0	0.0	0.0	0.0	0.0
MW-49B	0.0	0.0	0.0	0.0	0.0	0.0	0.0	0.0	0.0	0.0	0.0	0.0	0.0	0.0	0.0	0.0
MW-49C	0.0	0.0	0.0	0.0	0.0	0.0	0.0	0.0	0.0	0.0	0.0	0.0	0.0	0.0	0.0	0.0
AS-SW	0.0	0.0	0.0	0.0	0.0	0.0	0.0	0.0	0.0	0.0	0.0	0.0	0.0	0.0	0.0	na
AS-SC	0.0	0.0	0.0	0.0	0.0	0.0	0.0	0.0	0.0	0.0	0.0	0.0	0.0	0.0	0.0	na
AS-NE	0.0	0.0	0.0	0.0	0.0	0.0	0.1	0.0	0.0	0.0	0.0	0.0	0.0	0.0	0.0	na

na - not available

Measured in % Volume

Table 3 (continued)

Well	2/05	3/05	4/05	5/05	6/05	7/05	8/05	9/05	10/05	11/05	12/05	1/06	2/06	3/06	4/06	5/06
MW-7C	0.0	0.0	0.0	0.0	0.0	0.0	0.0	0.0	0.0	0.0	0.0	0.0	0.0	0.0	0.0	0.0
MW-8C	0.0	0.0	0.0	0.0	0.0	0.0	0.0	0.0	0.0	0.0	0.0	0.0	0.0	0.0	0.0	0.0
MW-9A	0.0	0.0	0.0	0.0	0.0	0.0	0.0	0.0	0.0	0.0	0.0	0.0	0.0	0.0	0.0	0.0
MW-9B	0.0	0.0	0.0	0.0	0.0	0.0	0.0	0.0	0.0	0.0	0.0	0.0	0.0	0.0	0.0	0.0
MW-9C	0.0	0.0	0.0	0.0	0.0	0.0	0.0	0.0	0.0	0.0	0.0	0.0	0.0	0.0	0.0	0.0
MW-11A	0.0	0.0	0.0	0.0	0.0	0.0	0.0	0.0	0.0	0.0	0.0	0.0	0.0	0.0	0.0	0.0
MW-12A	0.0	0.0	0.0	0.0	0.0	0.0	0.0	0.0	0.0	0.0	0.0	0.0	0.0	0.0	0.0	0.0
MW-12C	0.0	0.0	0.0	0.0	0.0	0.0	0.0	0.0	0.0	0.0	0.0	0.0	0.0	0.0	0.0	0.0
MW-18A	0.0	0.0	0.0	0.0	0.0	0.0	0.0	0.0	0.0	0.0	0.0	0.0	0.0	0.0	0.0	0.0
MW-19A	0.0	0.0	0.0	0.0	0.0	0.0	0.0	0.0	0.0	0.0	0.0	0.0	0.0	0.0	0.0	0.0
MW-24C	0.0	0.0	0.0	0.0	0.0	0.0	0.0	0.0	0.0	0.0	0.0	0.0	0.0	0.0	0.0	0.0
MW-38B	0.0	0.0	0.0	0.0	0.0	0.0	0.0	0.0	0.0	0.0	0.0	0.0	0.0	0.0	0.0	0.0
MW-39A	0.0	0.0	0.0	0.0	0.0	0.0	0.0	0.0	0.0	0.0	0.0	0.0	0.0	0.0	0.0	0.0
MW-49A	0.0	0.0	0.0	0.0	0.0	0.0	0.0	0.0	0.0	0.0	0.0	0.0	0.0	0.0	0.0	0.0
MW-49B	0.0	0.0	0.0	0.0	0.0	0.0	0.0	0.0	0.0	0.0	0.0	0.0	0.0	0.0	0.0	0.0
MW-49C	0.0	0.0	0.0	0.0	0.0	0.0	0.0	0.0	0.0	0.0	0.0	0.0	0.0	0.0	0.0	0.0
AS-SW	0.0	0.0	0.0	0.0	0.0	0.0	0.0	0.0	0.0	0.0	0.0	0.0	0.0	0.0	0.0	0.0
AS-SC	0.0	0.0	0.0	0.0	0.0	0.0	0.0	0.0	0.0	0.0	0.0	0.0	0.0	0.0	0.0	0.0
AS-NE	0.0	0.0	0.0	0.0	0.0	0.0	0.0	0.0	0.0	0.0	0.0	0.0	0.0	0.0	0.0	0.0

na - not available

Measured in % Volume

Table 3 (continued)

Well	6/06	7/06	8/06	9/06	10/06	11/06										
MW-7C	0.0	0.0	0.0	0.0	0.0	0.0										
MW-8C	0.0	0.0	0.0	0.0	0.0	0.0										
MW-9A	0.0	0.0	0.0	0.0	0.0	0.0										
MW-9B	0.0	0.0	0.0	0.0	0.0	0.0										
MW-9C	0.0	0.0	0.0	0.0	0.0	0.0										
MW-11A	0.0	0.0	0.0	0.0	0.0	0.0										
MW-12A	0.0	0.0	0.0	0.0	0.0	0.0										
MW-12C	0.0	0.0	0.0	0.0	0.0	0.0										
MW-18A	0.0	0.0	0.0	0.0	0.0	0.0										
MW-19A	0.0	0.0	0.0	0.0	0.0	0.0										
MW-24C	0.0	0.0	0.0	0.0	0.0	0.0										
MW-38B	0.0	0.0	0.0	0.0	0.0	0.0										
MW-39A	0.0	na	na	na	na	na										
MW-49A	0.0	0.0	0.0	0.0	0.0	0.0										
MW-49B	0.0	0.0	0.0	0.0	0.0	0.0										
MW-49C	0.0	0.0	0.0	0.0	0.0	0.0										
AS-SW	0.0	0.0	0.0	0.0	0.0	0.0										
AS-SC	0.0	0.0	0.0	0.0	0.0	0.0										
AS-NE	0.0	0.1	0.0	0.0	0.1	0.0										

na - not available

Measured in % Volume

Table 4
Landfill Gas Control Well Methane Data
Town of Huntington East Northport Landfill, East Northport, New York
for period of record between October, 1999 and November, 2006

Well	10/99	11/99	12/99	1/00	2/00	3/00	4/00	5/00	6/00	7/00	8/00	9/00	10/00	11/00	12/00	1/01
CWI-4	0.2	0.3	0.3	0.0	NA	0.0	0.0	0.6	0.6	2.3	NA	0.2	0.2	0.2	6.0	0.2
CWI-5	1.6	3.2	1.5	0.0	NA	0.7	0.7	0.7	0.8	0.4	NA	1.4	3.4	1.6	1.1	1.6
CWI-6	0.8	3.6	0.7	0.0	NA	0.7	0.3	0.9	0.8	1.8	NA	1.3	0.6	1.0	0.8	1.4
CWI-7	1.9	1.9	1.9	0.0	NA	na	0.8	1.2	1.3	2.7	NA	3.0	2.0	2.8	0.0	2.2
CWII-1	5.0	10.0	5.0	5.1	NA	4.3	3.0	1.3	1.2	5.6	NA	5.5	6.0	10.0	4.8	8.0
CWII-2	3.0	5.4	3.1	7.0	NA	0.8	2.3	1.0	1.0	4.3	NA	5.2	3.2	4.0	3.0	4.4
CWII-3	6.8	12.5	7.2	11.2	NA	10.7	7.3	5.5	4.9	7.2	NA	6.0	5.5	12.5	10.0	4.8
CWII-4	5.3	8.5	7.4	6.9	NA	5.0	5.0	0.0	0.0	8.4	NA	5.5	4.9	6.0	0.2	6.0
CWII-5	0.0	1.0	0.0	0.0	NA	0.0	0.0	0.5	0.0	1.0	NA	0.0	0.0	0.0	0.2	0.0
CWII-6	3.5	6.0	0.8	0.0	NA	0.0	1.5	0.1	0.0	5.4	NA	6.0	4.0	5.0	0.9	0.0
CWII-7	0.9	1.3	0.0	0.0	NA	0.0	0.0	0.5	0.3	0.0	NA	0.2	0.1	0.2	0.1	0.0
CWII-8	0.0	0.0	0.0	0.0	NA	0.0	0.0	0.3	0.4	0.0	NA	0.0	0.0	0.0	0.2	0.0
CWII-9	0.8	2.2	0.0	0.0	NA	0.0	0.0	0.2	0.1	0.9	NA	1.6	1.0	1.6	0.3	0.0
NW-1	0.0	0.0	0.0	na	NA	0.0	0.0	0.0	0.0	0.2	NA	0.0	0.0	0.0	0.0	0.0
NW-2	0.0	0.0	0.1	0.0	NA	0.0	0.0	0.0	0.0	0.4	NA	0.1	0.0	0.0	0.0	0.0
NW-3	0.0	0.0	0.0	0.0	NA	0.2	0.0	0.0	0.0	0.5	NA	0.1	0.0	0.0	0.1	0.0
NW-4	0.4	0.3	0.1	0.0	NA	0.0	0.0	0.0	0.0	0.9	NA	0.0	0.0	0.0	0.0	0.0
NW-5	0.0	0.0	0.1	0.0	NA	0.0	0.0	0.0	0.0	0.5	NA	0.0	0.0	0.0	0.0	0.0
NW-6	0.0	0.1	0.2	0.0	NA	0.0	0.0	0.0	0.0	0.0	NA	0.0	0.0	0.0	0.0	0.0
Ext-1	0.0	0.0	0.0	0.0	NA	0.0	0.0	0.8	0.9	0.4	NA	0.0	0.0	0.0	0.0	0.0
Ext-2	0.0	0.6	0.0	0.0	NA	0.0	1.2	1.1	0.9	0.7	NA	0.6	0.2	0.5	0.3	0.6
Ext-3	0.0	3.1	0.0	0.0	NA	1.0	1.8	0.0	0.0	0.5	NA	2.3	0.1	2.0	0.0	2.2
Ext-4	0.0	1.4	0.0	0.0	NA	0.5	0.0	1.1	0.9	0.1	NA	1.4	0.3	0.8	0.4	1.9
Ext-5	0.0	0.0	0.0	0.0	NA	0.0	0.0	0.0	0.0	0.2	NA	0.0	0.0	0.0	0.0	0.0
N-1	0.0	NA	0.0	0.0	NA	0.0	0.0	0.0	0.0	0.0	NA	0.1	0.0	0.0	0.0	0.0
N-2	NA	NA	NA	NA	NA	NA	NA	NA	NA	NA	NA	0.0	5.0	0.2	5.0	0.0
N-3	0.0	0.0	0.0	0.0	NA	0.0	0.0	na	0.0	0.0	NA	0.0	0.0	0.0	0.0	na
N-4	0.0	0.0	0.0	0.0	NA	0.0	0.0	0.1	0.1	0.0	NA	0.0	0.0	0.0	0.0	0.0
N-5	0.2	0.3	0.0	0.0	NA	0.0	0.0	0.0	0.0	0.0	NA	0.1	0.0	0.0	0.0	0.0
N-6	0.0	0.0	0.0	0.0	NA	0.0	0.0	0.0	0.0	0.0	NA	0.3	0.2	0.1	0.0	0.0
BS-1	1.0	1.6	1.3	0.8	NA	0.9	0.9	0.5	0.4	2.6	NA	1.8	0.6	0.6	0.1	1.4

na - not available

Measured in % Volume

Table 4 (continued)

Well	2/01	3/01	4/01	5/01	6/01	7/01	8/01	9/01	10/01	11/01	12/01	1/02	2/02	3/02	4/02	5/02
CWI-4	0.0	0.2	0.2	0.2	0.2	0.2	0.2	0.1	0.2	0.2	0.3	0.2	0.4	0.0	0.1	1.0
CWI-5	1.2	1.0	1.2	1.0	1.2	1.2	1.2	1.0	1.4	1.2	1.2	1.0	1.0	1.0	1.2	0.0
CWI-6	0.9	0.5	1.0	1.4	1.2	1.6	2.0	1.1	1.0	1.0	0.8	2.0	1.5	1.0	1.1	2.0
CWI-7	1.8	1.4	1.6	2.4	3.0	3.4	2.8	2.6	3.0	1.6	0.0	2.0	2.0	1.8	0.0	1.6
CWII-1	8.0	4.4	6.0	8.0	8.0	8.0	8.0	8.0	12.0	5.0	4.8	8.0	5.0	6.0	4.0	5.0
CWII-2	3.8	3.0	3.8	4.0	3.8	4.4	6.0	4.0	4.2	2.5	2.8	2.5	2.8	2.5	2.5	2.8
CWII-3	4.6	12.0	6.0	4.6	4.8	10.0	4.8	4.6	12.0	10.0	NA	NA	10.0	9.8	8.0	7.0
CWII-4	5.0	10.0	7.0	10.0	8.0	8.0	10.0	8.0	10.0	5.0	3.0	8.0	8.0	6.8	5.0	5.0
CWII-5	0.0	0.0	0.0	0.3	0.0	0.3	0.3	0.0	0.2	0.0	0.2	0.1	0.0	0.0	0.0	0.1
CWII-6	0.0	0.2	0.0	3.8	4.8	6.0	4.8	5.0	7.0	3.6	0.8	3.0	3.0	3.4	3.4	5.0
CWII-7	0.0	0.3	0.0	0.0	0.1	0.0	0.2	0.1	0.2	0.2	0.0	0.2	0.0	0.2	0.2	0.2
CWII-8	0.0	0.0	0.0	0.0	0.0	0.1	0.0	0.0	0.0	0.0	0.0	0.0	0.0	0.0	0.0	0.0
CWII-9	0.2	0.0	0.2	1.3	1.0	1.2	1.3	1.3	1.6	1.1	0.6	1.0	1.0	1.0	0.9	0.6
NW-1	0.0	0.0	0.0	0.0	0.0	0.0	0.0	0.1	0.0	0.0	0.0	0.0	0.0	0.0	0.0	0.0
NW-2	0.0	0.0	0.0	0.0	0.0	0.0	0.0	0.0	0.0	0.0	0.0	0.0	0.0	0.0	0.0	0.0
NW-3	0.0	0.0	0.0	0.0	0.0	0.0	0.0	0.0	0.0	0.0	0.0	0.0	0.0	0.0	0.0	0.0
NW-4	0.0	0.0	0.0	0.0	0.0	0.0	0.0	0.0	0.0	0.0	0.0	0.1	0.0	0.0	0.0	0.0
NW-5	0.0	0.0	0.0	0.0	0.0	0.0	0.0	0.0	0.0	0.0	0.0	0.0	0.0	0.0	0.0	0.0
NW-6	0.0	0.0	0.0	0.0	0.0	0.0	0.0	0.0	0.0	0.0	0.0	0.0	0.0	0.0	0.0	0.0
Ext-1	0.0	0.0	0.0	0.0	0.0	0.0	0.0	0.0	0.0	0.0	0.0	0.0	0.0	0.0	0.0	0.0
Ext-2	0.2	0.4	0.1	0.4	0.0	0.2	0.0	0.1	0.0	0.0	0.2	0.3	0.4	0.1	0.0	0.3
Ext-3	0.0	1.8	0.1	1.2	0.0	0.0	0.0	0.4	0.2	0.2	0.0	1.8	1.8	1.4	0.2	2.5
Ext-4	0.2	1.8	0.4	1.4	0.0	0.2	0.0	0.6	0.4	0.2	0.5	1.4	1.5	1.1	0.4	3.1
Ext-5	0.0	0.0	0.0	0.0	0.0	0.0	0.0	0.0	0.0	0.0	0.0	0.0	0.0	0.0	0.0	2.9
N-1	0.0	0.0	0.0	0.0	0.1	0.4	0.0	0.0	0.0	0.0	0.0	0.0	0.0	0.0	0.0	0.0
N-2	0.0	0.0	0.0	0.0	0.5	0.0	6.0	0.0	18.0	2.5	2.8	2.4	10.0	3.4	2.8	1.7
N-3	0.0	0.0	0.0	0.0	0.0	0.0	0.0	0.0	0.0	0.0	0.0	0.0	0.0	0.0	0.0	0.0
N-4	0.0	0.0	0.0	0.0	0.0	0.0	0.0	0.0	0.0	0.0	0.0	0.2	0.0	0.0	0.0	0.0
N-5	0.0	0.0	0.0	0.0	0.0	0.0	0.0	0.0	0.0	0.0	0.0	0.0	0.0	0.0	0.0	0.0
N-6	0.0	0.1	0.0	0.0	0.0	0.0	0.0	0.1	0.1	0.0	0.0	0.2	1.0	0.3	0.0	0.0
BS-1	1.0	0.8	0.8	1.0	1.2	1.4	0.5	1.2	1.3	0.6	1.0	1.0	1.0	1.1	1.0	1.0

na - not available

Measured in % Volume

Table 4 (continued)

Well	6/02	7/02	8/02	9/02	10/02	11/02	12/02	1/03	2/03	3/03	4/03	5/03	6/03	7/03	8/03	9/03
CWI-4	0.0	0.2	0.8	0.2	0.3	0.2	0.2	0.2	0.1	0.1	0.2	0.2	0.0	0.1	0.1	0.1
CWI-5	0.7	0.2	1.0	0.9	0.9	0.8	0.9	0.8	0.9	0.6	0.7	0.8	0.1	0.8	0.6	0.7
CWI-6	0.9	1.0	1.1	1.1	1.1	0.3	0.9	0.2	0.8	0.6	0.7	1.0	0.0	1.0	0.8	0.6
CWI-7	1.3	1.5	1.6	1.5	1.3	0.9	0.8	0.6	0.7	0.4	0.6	0.9	0.1	1.8	1.0	1.2
CWII-1	5.0	5.0	5.0	7.0	3.0	8.0	8.0	8.0	6.0	6.0	7.0	8.0	0.1	7.0	7.0	7.2
CWII-2	0.1	1.8	1.6	1.3	1.0	2.0	2.6	1.6	2.2	2.3	3.2	3.3	0.1	2.4	2.3	2.6
CWII-3	0.3	6.0	5.0	7.0	3.5	6.0	11.0	5.5	7.0	7.0	8.0	12.0	0.0	6.0	3.8	3.6
CWII-4	0.2	5.0	5.0	5.0	6.0	7.0	7.0	6.2	NA	6.0	6.0	7.0	0.0	5.0	6.0	6.0
CWII-5	0.4	0.2	0.1	0.1	0.1	0.1	0.1	0.0	0.0	0.1	0.1	0.6	0.0	0.3	0.2	0.3
CWII-6	3.9	4.7	4.6	4.8	3.8	2.1	1.0	1.3	0.1	1.1	0.4	2.8	0.0	2.7	2.3	2.4
CWII-7	0.2	0.2	0.3	0.2	0.2	0.1	0.0	0.1	NA	0.1	0.1	0.1	0.0	0.1	0.1	0.2
CWII-8	0.1	0.1	0.1	0.0	0.0	0.0	0.1	0.0	NA	0.0	0.0	0.0	0.0	0.0	0.0	0.0
CWII-9	1.2	1.2	1.0	1.0	1.0	1.0	0.1	0.6	0.0	0.7	0.5	1.1	0.1	0.7	0.8	0.9
NW-1	0.0	0.0	0.0	0.0	0.0	0.0	0.0	0.0	NA	0.0	0.0	0.0	0.0	0.0	0.0	0.0
NW-2	0.0	0.0	0.0	0.0	0.0	0.0	0.0	0.0	0.0	0.0	0.0	0.0	0.0	0.0	0.0	0.0
NW-3	0.0	0.0	0.0	0.0	0.0	0.0	0.1	0.0	0.0	0.0	0.0	0.0	0.0	0.0	0.0	0.0
NW-4	0.0	0.0	0.0	0.0	0.0	0.0	0.1	0.0	0.0	0.0	0.0	0.0	0.0	0.0	0.0	0.0
NW-5	0.0	0.0	0.0	0.0	0.0	0.0	0.0	0.0	NA	0.0	0.0	0.0	0.0	0.0	0.0	0.0
NW-6	0.0	0.0	0.0	0.0	0.0	0.0	0.0	0.0	12.0	0.0	0.0	0.0	0.0	0.0	0.0	0.0
Ext-1	0.1	0.0	0.0	0.0	0.0	0.0	0.0	0.0	0.0	0.0	0.0	0.0	NA	0.0	0.0	0.0
Ext-2	0.0	0.2	0.1	0.1	0.1	0.1	0.1	0.2	0.2	0.1	0.2	0.2	NA	0.1	0.2	0.1
Ext-3	0.1	0.4	0.4	0.7	0.2	1.8	0.2	1.6	1.4	1.4	0.8	0.6	NA	0.7	0.6	0.7
Ext-4	0.3	2.0	1.8	0.7	0.3	1.9	0.5	1.7	1.0	0.6	1.2	1.0	NA	1.0	1.0	1.0
Ext-5	2.1	0.0	0.0	0.0	0.1	0.0	0.1	0.0	0.0	0.0	0.0	0.0	NA	0.0	0.0	0.0
N-1	0.0	0.3	0.2	0.2	0.1	0.1	0.1	0.1	NA	0.0	0.0	0.0	NA	0.0	0.0	0.0
N-2	2.5	0.0	3.8	3.4	3.5	3.7	3.5	3.5	NA	0.0	0.0	0.0	NA	3.5	2.5	2.0
N-3	0.0	0.0	0.0	0.0	0.0	0.0	0.0	0.0	NA	0.0	0.0	0.0	NA	0.0	0.0	0.0
N-4	0.0	0.0	0.0	0.0	0.0	0.0	0.0	0.0	NA	0.0	0.0	0.0	NA	0.0	0.0	0.0
N-5	0.0	0.0	0.0	0.0	0.0	0.0	0.0	0.0	NA	0.0	0.0	0.0	NA	0.0	0.0	0.0
N-6	0.1	0.2	0.1	0.2	0.2	0.1	0.1	0.1	0.0	0.0	0.0	0.1	NA	0.1	0.1	0.1
BS-1	1.0	1.2	1.1	1.1	1.2	1.1	1.4	1.0	1.0	0.8	0.9	1.1	0.0	0.9	0.9	0.8

na - not available

Measured in % Volume

Table 4 (continued)

Well	10/03	11/03	12/03	1/04	2/04	3/04	4/04	5/04	6/04	7/04	8/04	9/04	10/04	11/04	12/04	1/05
CWI-4	0.1	0.1	0.1	0.1	0.2	0.4	0.3	0.1	0.2	0.2	0.8	0.2	0.1	0.1	0.1	0.0
CWI-5	0.5	0.6	0.5	0.8	1.9	1.0	1.2	0.4	0.5	0.4	1.2	0.5	0.8	1.0	0.6	0.6
CWI-6	0.7	0.5	0.5	0.6	0.9	0.8	1.0	0.4	0.4	0.4	1.0	1.2	0.8	0.7	0.7	0.6
CWI-7	1.0	1.1	1.2	1.0	1.7	2.3	1.3	0.8	0.7	0.6	0.8	1.5	1.6	2.6	1.5	1.7
CWII-1	7.5	7.0	7.2	6.0	7.0	12.0	10.0	9.0	9.0	8.1	8.0	3.7	6.0	6.0	6.0	4.0
CWII-2	2.0	2.5	2.3	2.3	1.2	1.6	1.8	0.6	0.8	0.7	0.8	1.7	1.6	1.5	1.6	1.3
CWII-3	4.0	4.0	4.0	1.2	1.7	7.0	8.0	7.0	7.5	3.1	4.2	2.5	1.8	1.8	0.1	1.0
CWII-4	5.5	5.2	5.1	NA	3.1	NA	5.2	1.7	0.8	0.6	1.0	3.5	3.2	3.9	0.0	2.0
CWII-5	0.1	0.2	0.2	0.0	0.1	0.6	0.2	0.5	0.5	0.6	0.8	0.7	0.2	0.1	0.0	0.0
CWII-6	2.5	2.4	2.3	0.1	0.8	1.6	2.0	2.0	1.8	2.2	2.8	0.1	0.1	0.1	0.1	0.0
CWII-7	0.1	0.1	0.1	0.1	0.1	0.1	0.1	0.1	0.2	0.2	0.4	0.1	0.0	0.1	0.0	0.0
CWII-8	0.0	0.0	0.0	0.1	0.1	0.0	0.0	0.0	0.1	0.2	0.2	0.1	0.0	0.0	0.0	0.0
CWII-9	0.5	0.5	0.4	0.1	0.4	0.6	1.0	0.1	0.1	0.6	0.4	0.1	0.3	0.1	0.1	0.2
NW-1	0.0	0.0	0.0	0.0	0.0	0.0	0.0	0.0	0.0	0.0	0.0	0.0	0.0	0.0	0.0	0.0
NW-2	0.0	0.0	0.0	NA	0.0	0.0	0.0	0.0	0.0	0.0	0.0	0.0	0.0	0.0	0.0	0.0
NW-3	0.0	0.0	0.0	0.0	0.1	0.0	0.0	0.0	0.0	0.0	0.0	0.0	0.0	0.0	0.0	0.0
NW-4	0.0	0.0	0.0	0.0	0.0	0.0	0.0	0.0	0.0	0.0	0.0	0.0	0.0	0.0	0.0	0.0
NW-5	0.0	0.0	0.0	0.0	0.0	0.0	0.0	0.0	0.0	0.0	0.0	0.0	0.0	0.0	0.0	0.0
NW-6	0.0	0.0	0.0	0.0	0.0	0.0	0.0	0.0	0.0	0.0	0.0	0.0	0.0	0.0	0.0	0.0
Ext-1	0.0	0.0	0.0	0.0	0.0	0.0	0.0	0.0	0.9	0.9	1.0	0.0	0.0	0.9	0.0	0.0
Ext-2	0.1	0.0	0.0	0.0	0.0	0.0	0.0	0.0	0.0	0.0	0.0	0.0	0.0	0.1	0.0	NA
Ext-3	0.0	0.0	0.0	0.0	0.0	0.0	0.0	0.0	0.0	0.0	0.0	0.1	0.1	0.7	0.1	0.8
Ext-4	0.1	0.0	0.0	0.0	0.1	0.0	0.0	0.0	0.0	0.1	0.1	0.1	0.1	0.3	0.1	0.4
Ext-5	0.0	0.0	0.0	0.0	0.0	0.0	0.0	0.0	0.0	0.0	0.0	0.0	0.0	0.0	0.0	0.0
N-1	0.0	0.0	0.1	NA	1.0	0.0	0.0	0.0	0.0	0.0	0.0	0.0	0.0	0.0	0.0	NA
N-2	2.4	1.7	3.0	NA	3.8	2.9	3.6	0.1	0.0	0.0	0.0	0.0	3.9	3.5	1.4	NA
N-3	0.0	0.0	0.1	NA	0.0	0.0	0.0	0.0	0.0	0.0	0.0	0.0	0.0	0.0	0.0	NA
N-4	0.0	0.0	0.1	NA	0.0	0.0	0.0	0.0	0.0	0.0	0.0	0.0	0.0	0.0	0.0	NA
N-5	0.0	0.0	0.0	NA	0.0	0.0	0.0	0.0	0.0	0.0	0.0	0.0	0.0	0.0	0.0	NA
N-6	0.0	0.0	0.1	0.0	0.1	NA	0.0	0.0	0.0	0.0	0.0	0.1	0.0	0.1	0.0	NA
BS-1	0.6	0.7	0.8	0.8	0.7	1.0	0.6	0.3	0.4	0.7	0.8	0.6	0.6	0.7	0.6	0.5

na - not available

Measured in % Volume

Table 4 (continued)

Well	2/05	3/05	4/05	5/05	6/05	7/05	8/05	9/05	10/05	11/05	12/05	1/06	2/06	3/06	4/06	5/06
CWI-4	0.1	0.1	0.1	0.1	0.1	0.1	0.1	0.1	0.1	0.1	0.1	0.0	0.3	0.4	0.2	0.1
CWI-5	0.6	0.6	0.4	0.4	0.3	0.4	0.3	0.3	0.4	0.4	0.4	0.0	1.8	2.0	1.5	0.8
CWI-6	0.8	0.7	0.7	0.5	0.3	0.4	0.2	0.4	0.1	0.5	0.6	0.1	0.3	0.1	0.4	1.0
CWI-7	2.2	1.5	1.5	1.1	1.0	1.4	0.5	0.8	1.4	0.1	1.7	0.2	5.0	6.0	5.0	0.1
CWII-1	6.0	7.0	3.7	2.4	1.8	3.0	2.4	1.9	3.5	1.8	3.7	0.4	5.0	6.0	2.7	1.6
CWII-2	1.5	1.4	1.5	0.7	0.9	1.1	0.7	0.9	1.2	0.0	0.8	0.2	4.5	4.2	3.4	2.7
CWII-3	3.2	2.7	2.9	2.0	1.0	2.7	1.4	1.6	0.4	1.7	1.4	0.2	2.3	2.1	0.9	1.8
CWII-4	2.3	2.8	0.7	1.7	1.6	2.2	1.5	1.3	2.0	2.3	1.8	0.2	4.0	3.8	1.0	4.0
CWII-5	0.8	0.8	0.7	0.8	0.3	1.0	0.8	1.0	0.4	1.2	0.4	0.0	1.0	4.2	0.5	0.7
CWII-6	0.0	0.5	0.0	0.9	0.8	1.0	0.5	1.1	0.1	0.7	0.9	0.2	3.5	0.7	0.8	2.0
CWII-7	0.0	0.0	0.0	0.0	0.1	0.0	0.0	0.1	0.1	0.0	0.1	0.0	0.1	3.4	0.0	0.0
CWII-8	0.0	0.0	0.3	0.0	0.1	0.0	0.0	0.0	0.1	0.0	0.0	0.0	0.0	0.0	0.0	0.0
CWII-9	0.0	0.3	0.0	0.3	0.3	0.3	0.2	0.2	0.1	0.4	0.3	0.0	1.1	0.0	0.7	0.6
NW-1	0.0	0.0	0.0	0.0	0.0	0.0	0.0	0.0	0.0	0.0	0.0	0.0	0.0	1.0	0.8	0.0
NW-2	0.0	0.0	0.0	0.0	0.0	0.0	0.0	0.0	0.0	0.0	0.0	0.0	0.0	0.0	0.0	0.0
NW-3	0.0	0.0	0.0	0.0	0.0	0.0	0.0	0.0	0.1	0.0	0.0	0.0	0.0	0.0	0.0	0.0
NW-4	0.0	0.2	0.0	0.0	0.0	0.0	0.0	0.0	0.0	0.0	0.0	0.0	0.0	0.0	0.0	0.0
NW-5	0.0	0.0	0.0	0.0	0.0	0.0	0.0	0.0	0.0	0.0	0.0	0.0	0.0	0.0	0.0	0.0
NW-6	0.0	0.0	0.0	0.0	0.0	0.0	0.0	0.0	0.0	0.0	0.0	0.0	0.0	0.0	0.0	0.0
Ext-1	0.0	0.0	0.0	0.0	0.0	0.0	0.0	0.0	0.0	0.0	0.0	0.0	0.0	0.0	0.0	0.0
Ext-2	0.0	0.2	0.0	0.0	0.0	0.0	0.0	0.0	0.0	0.0	0.0	0.0	0.0	0.0	0.0	0.0
Ext-3	0.5	0.7	0.2	0.6	0.0	0.0	0.0	0.0	0.0	0.4	0.3	0.2	0.0	0.0	0.0	0.2
Ext-4	0.3	0.4	0.2	0.6	0.0	0.0	0.0	0.0	0.0	0.3	0.2	0.2	0.0	0.0	0.0	0.4
Ext-5	0.0	0.0	0.0	0.0	0.0	0.0	0.0	0.0	0.0	0.0	0.1	0.0	0.0	0.0	0.0	0.0
N-1	0.0	0.0	0.0	0.1	0.0	0.0	0.0	0.0	0.0	0.0	0.0	0.0	0.0	0.0	0.0	0.0
N-2	3.6	3.3	3.0	3.2	2.2	1.9	0.0	na	2.9	2.6	2.6	2.6	1.3	0.6	11.0	NA
N-3	0.0	0.0	0.0	0.0	0.0	0.0	0.0	0.0	0.0	0.0	0.0	0.0	0.0	0.0	0.0	0.0
N-4	0.0	N/A	0.0	0.0	0.0	0.0	0.0	0.0	0.0	0.0	0.0	0.0	0.0	0.0	0.0	0.0
N-5	0.0	0.0	0.0	0.0	0.0	0.0	0.0	0.0	0.0	0.0	0.0	0.0	0.0	0.0	0.2	0.0
N-6	0.0	0.0	0.0	0.0	0.0	0.1	0.0	0.0	0.0	0.0	0.1	na	0.0	0.0	0.1	NA
BS-1	0.8	0.5	0.5	0.4	0.4	0.4	0.4	0.8	0.4	0.4	0.4	0.1	0.0	0.6	0.9	0.7

na - not available

Measured in % Volume

Table 4 (continued)

Well	6/06	7/06	8/06	9/06	10/06	11/06										
CWI-4	0.3	0.1	0.0	0.0	0.2	0.1										
CWI-5	1.5	0.2	0.0	0.0	1.0	0.8										
CWI-6	0.9	0.2	0.0	0.0	0.0	1.0										
CWI-7	0.7	0.6	0.0	0.0	0.2	2.2										
CWII-1	2.4	2.6	7.0	0.0	0.3	4.0										
CWII-2	1.9	1.0	2.2	0.0	3.0	1.6										
CWII-3	1.5	1.5	1.7	0.0	0.2	0.0										
CWII-4	1.3	0.8	4.7	0.0	0.3	5.0										
CWII-5	0.6	0.4	1.5	0.0	0.0	0.8										
CWII-6	0.6	1.1	0.5	0.0	0.1	0.9										
CWII-7	0.0	0.0	0.2	0.0	0.0	0.1										
CWII-8	0.0	0.2	0.0	0.0	0.0	0.0										
CWII-9	0.2	0.5	0.4	0.0	0.0	0.4										
NW-1	0.0	0.0	0.0	0.0	0.0	0.0										
NW-2	0.0	0.0	0.0	0.0	0.0	0.0										
NW-3	0.0	0.0	0.0	0.0	0.0	0.0										
NW-4	0.0	0.0	0.0	0.0	0.0	0.0										
NW-5	0.0	0.0	0.0	0.0	0.0	0.0										
NW-6	0.0	0.0	2.0	0.0	0.0	0.0										
Ext-1	0.1	0.0	0.0	0.0	0.0	0.0										
Ext-2	0.1	0.1	0.2	0.0	0.0	0.0										
Ext-3	0.0	0.8	0.2	0.0	3.0	1.2										
Ext-4	0.2	0.4	0.1	0.0	2.0	0.4										
Ext-5	0.0	0.0	0.0	0.0	0.0	0.0										
N-1	0.0	0.0	0.1	0.0	0.0	0.0										
N-2	0.0	4.8	0.0	0.8	4.4	3.0										
N-3	0.0	0.0	0.0	0.0	0.0	0.0										
N-4	0.0	0.0	0.0	0.0	0.0	0.0										
N-5	0.0	0.0	0.0	0.0	0.0	0.0										
N-6	0.7	0.1	0.1	0.0	0.0	NA										
BS-1	0.4	0.4	0.0	0.1	0.9	0.7										

na - not available

Measured in % Volume

APPENDIX 1

Landfill Gas Control Well Vacuum Data
East Northport Landfill, East Northport, New York
for period of record between October, 1999 and November, 2006

Well	10/99	11/99	12/99	1/00	2/00	3/00	4/00	5/00	6/00	7/00	8/00	9/00	10/00	11/00	12/00	1/01	2/01	3/01	4/01
CWI-4	-3.7	-2.9	-4.3	-4.0	NA	-4.4	-5.0	-5.4	-6.4	-5.2	NA	-3.8	-3.8	-3.9	-4.7	-4.5	-4.0	-4.4	-4.3
CWI-5	-3.7	-2.7	-4.4	-4.0	NA	-4.8	-5.6	-3.7	-4.7	-3.1	NA	-3.8	-3.6	-3.8	-5.0	-4.9	-4.2	-4.7	-4.5
CWI-6	-3.8	-3.0	-5.0	-4.6	NA	-5.1	-5.7	-3.6	-3.6	-3.6	NA	-4.0	-4.1	-4.2	-5.1	-5.3	-4.4	-4.8	-4.6
CWI-7	-3.7	-3.6	-3.7	-4.2	NA	NA	5.5	-3.7	-3.5	-3.3	NA	-3.9	-3.2	-3.1	-3.8	-5.3	-4.3	-3.8	-3.7
CWII-1	-3.1	-2.4	-4.0	-3.8	NA	-4.3	-4.5	-2.8	-2.6	-3.3	NA	-3.4	-3.3	-3.4	-4.3	-4.5	-3.7	-4.1	-3.9
CWII-2	-3.4	-3.1	-4.4	-4.4	NA	-4.8	-5.2	-3.0	-3.1	-4.6	NA	-3.5	-3.6	-3.7	-4.6	-4.9	-3.9	-4.4	-4.1
CWII-3	-3.4	-3.4	-4.6	-4.6	NA	-5.1	-4.8	-3.1	-4.4	-3.3	NA	-3.6	-3.7	-3.7	-4.8	-5.1	-4.0	-4.4	-4.2
CWII-4	-3.3	-3.0	-4.4	-4.3	NA	-4.9	-4.6	-3.0	-3.6	-3.1	NA	-3.5	-3.6	-3.6	-4.6	-5.1	-3.9	-4.3	-4.1
CWII-5	-3.4	-3.1	-4.4	-3.6	NA	-3.8	-4.8	-1.8	-3.7	-3.8	NA	-3.6	-3.6	-3.7	-4.8	-0.4	-4.0	-4.4	-4.2
CWII-6	-2.4	-2.2	0.0	0.3	NA	0.0	-3.3	-2.9	-3.6	-3.6	NA	-2.7	-2.6	-2.6	-0.1	0.0	-3.0	-3.2	-3.1
CWII-7	-2.0	-1.9	0.0	0.2	NA	0.0	-2.8	-1.8	-2.9	-0.9	NA	-2.2	-2.1	-2.1	-0.4	0.0	-2.3	-1.7	-2.4
CWII-8	0.0	0.0	0.1	0.3	NA	0.3	0.0	-1.6	-2.0	0.0	NA	0.0	0.0	0.0	0.0	0.0	0.0	-0.1	-0.1
CWII-9	-1.4	-2.4	0.0	-0.8	NA	0.0	-2.7	-1.2	-1.8	-0.4	NA	-1.3	-1.4	-1.3	0.0	0.0	-1.5	-2.6	-1.7
NW-1	-3.0	-3.1	-3.3	NA	NA	-4.0	-3.6	-3.7	-3.7	-3.0	NA	-3.3	-3.3	-3.4	-5.3	-3.9	-3.5	-3.7	-3.9
NW-2	-2.2	-2.3	-2.7	-2.6	NA	-3.1	-3.1	-3.6	-3.6	-2.9	NA	-2.7	-2.6	-2.7	-5.3	-3.1	-3.0	-3.4	-3.4
NW-3	-2.7	-2.9	-3.2	-3.6	NA	-4.1	-4.2	-3.1	-3.1	-3.0	NA	-3.6	-3.4	-3.5	-4.9	-4.0	-3.7	-4.1	-4.1
NW-4	-2.9	-3.2	-3.6	-4.0	NA	-4.3	-4.4	-5.1	-3.4	-2.8	NA	-4.0	-3.7	-3.8	-4.2	-4.4	-4.1	-4.4	-4.4
NW-5	-2.2	-2.8	-2.7	-3.8	NA	-3.2	-3.6	-2.9	-3.0	-2.9	NA	-3.4	-3.1	-3.0	-3.6	-3.5	-3.0	-3.4	-3.4
NW-6	-2.2	-2.7	-3.0	-3.3	NA	-3.6	0.0	-3.0	-3.0	3.0	NA	-3.2	-3.1	-3.1	-3.6	-3.6	-3.6	-3.9	-3.6
Ext-1	-2.6	-2.1	0.0	-2.5	NA	-4.0	-4.0	-2.2	-1.6	-1.1	NA	-3.6	-3.5	-3.6	-3.9	-3.7	-3.9	-4.0	-0.1
Ext-2	-3.0	-3.0	0.0	-3.2	NA	-3.9	-3.9	-3.8	-1.4	-1.3	NA	-3.4	-3.5	-3.5	-3.9	-3.5	-3.7	-1.3	-1.4
Ext-3	-2.9	-2.8	0.0	-2.6	NA	-3.9	-3.6	-3.0	-2.1	-2.4	NA	-3.4	-3.4	-3.4	-3.8	-3.5	-3.5	-3.8	-3.7
Ext-4	-2.5	-2.6	0.0	-2.6	NA	-3.6	-4.4	-3.3	-3.0	-2.6	NA	-3.2	-3.1	-3.1	-3.7	-3.4	-3.4	-3.6	-3.7
Ext-5	-1.9	-2.1	0.0	-1.0	NA	-3.7	-3.6	-2.9	-2.8	-2.7	NA	-2.9	-2.7	-2.7	-2.8	-2.9	-2.8	-3.3	-3.0
N-1	0.0	NA	0.0	0.0	NA	-0.2	-0.6	na	-3.7	-0.1	NA	-0.9	-0.7	-0.2	-0.7	-0.3	-0.5	-0.3	0.0
N-2	NA	NA	NA	NA	NA	NA	NA	NA	NA	NA	NA	0.0	-0.1	0.0	-0.4	0.1	-0.2	-0.1	-0.2
N-3	0.4	0.0	-0.3	0.0	NA	0.0	0.0	na	0.0	-0.6	NA	-0.2	0.0	0.0	-0.2	NA	0.0	-0.1	-0.1
N-4	0.0	0.0	0.0	0.0	NA	0.0	0.0	0.0	0.0	-0.7	NA	-0.1	0.0	0.0	-0.2	0.0	-0.1	-0.1	-0.1
N-5	0.9	-0.1	0.2	0.4	NA	-0.4	-0.2	-1.2	0.0	-1.8	NA	-0.2	-0.1	-0.1	-0.1	-0.1	-0.1	-0.1	-0.1
N-6	0.0	0.0	0.2	0.0	NA	-1.0	-1.6	0.0	-3.2	-1.6	NA	-1.4	-1.4	-1.3	0.0	0.0	-1.4	-1.7	-1.5
BS-1	-6.6	-6.6	-7.3	-7.4	NA	-7.4	-9.2	-6.7	-7.4	-7.2	NA	-6.7	-6.8	-6.8	-7.4	-7.6	-7.0	-7.6	-7.5

Measured in inches of H2O

na = not available

Landfill Gas Control Well Vacuum Data
East Northport Landfill, East Northport, New York
for period of record between October, 1999 and November, 2006

Well	5/01	6/01	7/01	8/01	9/01	10/01	11/01	12/01	1/02	2/02	3/02	4/02	5/02	6/02	7/02	8/02	9/02	10/02	11/02
CWI-4	-3.9	-3.8	-3.7	-4.7	-1.7	-5.2	-5.1	-4.9	-4.4	-4.3	-4.3	-5.9	-6.5	-5.8	-5.5	-5.6	-5.9	-3.7	-6.3
CWI-5	-4.1	-3.8	-3.9	-4.9	-1.7	-5.5	-5.1	-5.0	-4.5	-4.3	-4.5	-6.0	-6.0	-5.9	-5.5	-5.9	-5.8	-3.8	-6.8
CWI-6	-4.5	-4.1	-4.5	-5.1	-1.9	-5.6	-5.4	-5.1	-4.9	-1.6	-4.8	-6.5	-6.4	-6.3	-6.1	-6.2	-6.3	-4.1	-7.1
CWI-7	-3.4	-3.2	-3.3	-3.9	-1.8	-4.2	-4.1	-4.2	-3.6	-3.4	-3.5	-4.8	-4.8	-4.8	-4.4	-4.9	-4.7	-2.8	-5.6
CWII-1	-3.8	-2.9	-3.8	-4.3	-1.6	-4.8	-4.4	-4.5	-4.1	-3.9	-3.9	-5.1	-5.0	-5.1	-4.5	-4.8	-4.9	-2.6	-5.8
CWII-2	-3.9	-3.7	-4.2	-4.6	-1.7	-4.9	-4.7	-4.6	-4.2	-4.0	-4.1	-5.5	-5.6	-5.7	-4.7	-4.8	-5.0	-3.0	-6.2
CWII-3	-3.9	-3.7	-3.9	-4.7	-1.9	-5.2	-5.0	NA	NA	-4.2	-4.2	-5.7	-6.0	-5.7	-5.0	-5.6	-5.6	-2.6	-6.5
CWII-4	-4.6	-3.6	-3.7	-4.6	-1.9	-5.1	-4.6	-4.6	-4.2	-4.1	-4.0	-5.6	-5.5	-5.4	-5.0	-5.4	-5.3	-2.0	-6.2
CWII-5	-3.9	-3.7	-4.1	-4.6	-1.9	-5.0	-4.7	-4.6	-4.3	-4.0	-4.2	-5.6	-5.6	-5.6	-5.1	-5.4	-5.5	-2.0	-6.2
CWII-6	-3.1	-2.9	-1.3	-3.6	-1.2	-2.2	-3.4	-2.9	-3.2	-3.0	-3.0	-4.2	-4.0	-4.0	-3.9	-3.8	-4.0	-4.2	-4.6
CWII-7	-2.2	-1.7	-0.9	-2.6	-0.9	-1.5	-2.7	-0.3	-2.4	-2.4	-2.3	-3.3	-3.1	-3.1	-2.5	-2.4	-3.2	-3.5	-3.6
CWII-8	-1.6	-0.1	0.0	-0.2	0.0	0.0	-0.1	-0.2	0.0	0.0	0.0	-0.1	-0.2	-0.1	-0.1	-0.1	-0.1	0.0	0.0
CWII-9	-1.4	-1.4	-0.6	-1.6	-0.6	-1.0	-1.7	-1.4	-1.6	-1.5	-1.5	-2.0	-1.8	-1.9	-1.7	-1.4	-2.0	-2.1	-2.0
NW-1	-3.7	-3.3	-3.3	-4.0	-0.7	-4.6	-4.5	-4.3	-4.0	-3.9	-3.8	-4.1	-3.8	-5.1	-3.5	-5.1	-5.1	-4.0	-5.5
NW-2	-3.0	-2.6	-2.4	-2.9	-1.1	-3.9	-3.3	-3.8	-3.1	-3.0	-2.9	-3.9	-3.6	-5.5	-4.9	-3.7	-3.7	-3.5	-4.0
NW-3	-3.9	-3.2	-3.6	-4.0	-1.5	-4.2	-4.2	-4.3	-3.9	-3.9	-3.8	-3.9	-3.7	-4.7	-4.7	-4.7	-4.9	-4.6	-5.6
NW-4	-4.1	-3.7	-3.6	-4.4	-1.2	-4.9	-5.0	-4.6	-4.3	-4.1	-4.0	-5.4	-4.9	-5.8	-5.5	-5.5	-5.6	-4.1	-6.5
NW-5	-3.3	-2.9	-2.9	-3.6	-1.5	-3.7	-4.0	-4.1	-3.5	-3.3	-3.2	-4.5	-3.9	-3.9	-4.1	-4.0	-4.4	-4.0	-4.8
NW-6	-3.4	-3.0	-3.0	-3.6	-1.2	-4.3	-4.0	-3.9	-3.5	-3.3	-3.3	-4.1	-3.9	-4.6	-4.2	-4.2	-4.4	-4.2	-5.0
Ext-1	-0.2	0.0	-0.1	-0.1	-0.1	-0.2	-0.2	-1.3	-0.2	-0.2	-0.1	-0.2	-0.2	-1.8	-0.1	-0.1	-0.2	-0.3	-0.1
Ext-2	-1.4	-1.2	-1.2	-1.4	-0.5	-1.4	-1.6	-2.1	-1.4	-1.4	-1.3	-1.8	-1.8	-0.2	-1.6	-1.6	-1.5	-1.6	-1.7
Ext-3	-3.6	-3.3	-3.2	-3.6	-1.4	-4.1	-4.1	-4.0	-3.7	-3.6	-3.6	-5.0	-4.9	-5.0	-4.6	-4.8	-4.4	-4.9	-5.3
Ext-4	-3.6	-2.9	-3.0	-3.5	-1.1	-3.9	-4.1	-4.1	-3.6	-3.6	-3.4	-4.8	-3.9	-4.9	-4.0	-4.0	-4.2	-4.7	-4.9
Ext-5	-2.9	-2.5	-2.5	-2.9	-1.1	-3.6	-3.6	-3.7	-3.2	-3.2	-3.1	-4.2	-3.7	-3.8	-3.2	-3.4	-3.8	-3.9	-4.2
N-1	-0.2	-1.1	-1.6	-2.1	-0.3	-0.3	-0.2	-0.3	-0.3	-0.4	-0.4	-0.3	-0.3	-0.3	-2.1	-2.3	-2.1	-1.3	-1.0
N-2	-0.3	-0.2	0.0	-0.4	-0.1	-0.5	-0.5	-0.5	-0.8	-0.6	-0.7	-0.5	-0.2	-0.4	-0.6	-0.9	-0.9	-0.6	-0.5
N-3	-0.2	-0.1	-0.1	-0.2	-0.1	-0.1	-0.2	-0.3	-0.2	-0.1	-0.1	-0.2	0.0	-0.2	0.0	-0.2	-0.2	-0.2	-0.2
N-4	-0.2	-0.2	-0.1	-0.2	-0.2	-0.1	-0.2	-0.1	-0.1	-0.1	-0.2	-0.2	0.0	0.0	-0.1	-0.2	-0.2	-0.2	-0.2
N-5	-0.2	-0.1	-0.1	-0.2	-0.1	-0.1	-0.2	-0.2	-0.3	-3.4	-3.4	-0.4	-0.5	-0.2	-0.1	-0.3	-0.2	-0.8	-0.6
N-6	-1.4	-1.3	-0.3	-1.6	-0.7	-1.1	-1.7	-1.3	-1.5	-1.5	-1.5	-1.8	-2.0	-1.9	-1.8	-1.2	-1.0	-2.1	-2.2
BS-1	-7.1	-6.8	-6.9	-8.6	-2.7	-9.9	-9.8	-9.1	-8.5	-8.3	-8.1	-12.1	-12.0	-11.8	-11.5	-11.5	-11.8	-8.2	-12.0

Measured in inches of H2O

na = not available

Landfill Gas Control Well Vacuum Data
East Northport Landfill, East Northport, New York
for period of record between October, 1999 and November, 2006

Well	12/02	1/03	2/03	3/03	4/03	5/03	6/03	7/03	8/03	9/03	10/03	11/03	12/03	1/04	2/04	3/04	4/04	5/04	6/04
CWI-4	-7.2	-6.3	-7.4	-6.8	-6.5	-6.4	NA	-4.1	-4.1	-4.0	-4.2	-4.1	-4.2	-4.3	-2.7	-3.2	-3.1	-2.3	-2.4
CWI-5	-8.0	-6.6	-8.3	-7.2	-7.0	-7.2	NA	-4.6	-4.5	-4.4	-4.6	-2.8	-3.0	-3.4	-3.0	-3.5	-3.6	-2.4	-2.5
CWI-6	-8.7	-6.8	-8.9	-7.4	-7.1	-7.2	NA	-4.5	-4.4	-4.2	-4.4	-3.7	-3.2	-3.7	-2.9	-3.5	-3.4	-2.5	-2.5
CWI-7	-7.4	-5.5	-7.8	-6.3	-6.2	-6.9	NA	-4.2	-4.2	-4.0	-4.3	-2.6	-2.9	-2.7	-2.9	-3.5	-2.8	-2.3	-2.4
CWII-1	-7.6	-5.7	-8.0	-6.4	-6.4	-6.1	NA	-4.2	-3.6	-3.8	-3.5	-3.0	-2.8	-3.1	-2.6	-3.9	-4.0	-3.7	-3.8
CWII-2	-8.5	-6.2	-8.5	-6.5	-6.5	-6.2	NA	-4.0	-3.5	-3.6	-3.5	-3.2	-3.3	-3.1	-2.7	-3.4	-3.4	-1.9	-2.0
CWII-3	-8.7	-6.3	-9.2	-6.9	-6.7	-6.5	NA	-4.1	-3.9	-3.8	-3.7	-3.6	-3.7	-3.3	-2.7	-3.6	-3.5	-2.1	-2.2
CWII-4	-8.3	-6.6	NA	-6.7	-6.5	-6.1	NA	-3.9	-3.7	-3.6	-3.6	-3.5	-3.0	N/A	-2.6	N/A	-3.3	-2.1	-2.5
CWII-5	-0.1	-6.8	0.0	-7.3	-6.6	-6.3	NA	-3.9	-3.9	-3.8	-3.7	-2.4	-2.5	-2.6	-2.7	-3.6	-2.6	-2.0	-1.9
CWII-6	-0.1	-4.3	0.0	-4.8	-4.7	-4.5	NA	-3.1	-3.5	-3.5	-3.6	-3.2	-3.1	-0.1	-1.2	-0.2	-0.3	-0.4	-0.8
CWII-7	0.0	-3.8	NA	-3.9	-3.8	-3.5	NA	-2.2	-2.8	-2.7	-2.5	-3.1	-3.1	-0.2	-1.1	-0.1	-0.2	-0.4	-0.7
CWII-8	0.0	0.0	NA	-0.2	-0.1	0.0	NA	-0.1	-0.1	0.0	-0.2	-0.1	-0.2	0.0	-0.1	0.0	0.0	0.1	-0.2
CWII-9	0.0	-2.2	0.0	-2.3	-2.3	-2.2	NA	-1.5	-1.5	-1.4	-1.5	-1.5	-1.3	-0.1	-0.8	-0.2	-0.1	0.0	-0.2
NW-1	-6.1	-5.7	NA	-6.2	-5.9	-6.4	NA	-4.0	-4.0	-3.8	-4.0	-4.0	-4.0	-0.1	-0.1	-3.1	-3.4	-1.8	-2.2
NW-2	-4.8	-4.1	-5.2	-5.0	-4.7	-4.2	NA	-4.7	-4.2	-4.5	-4.7	-2.7	-3.1	N/A	-3.1	-3.5	-3.1	-2.4	-2.8
NW-3	-7.0	-6.4	-6.9	-6.2	-6.0	-6.9	NA	-4.1	-4.0	-4.0	-4.1	-4.0	-3.9	-2.5	-2.8	-3.1	-3.1	-2.2	-2.1
NW-4	-6.3	-4.7	-8.0	-7.0	-6.7	-6.6	NA	-3.9	-3.8	-3.6	-3.8	-3.9	-3.9	-2.6	-2.8	-2.9	-2.6	-1.9	-1.8
NW-5	-5.5	-4.7	NA	-5.7	-5.1	-4.9	NA	-3.1	-3.0	-3.0	-3.1	-3.5	-3.5	-2.3	-2.1	-2.7	-3.0	-1.7	-1.6
NW-6	-5.6	-5.6	-6.5	-5.7	-5.3	-5.3	NA	-3.2	-3.1	-3.0	-3.1	-1.9	-2.1	-2.4	-2.1	-2.5	-2.2	-2.1	-1.9
Ext-1	-0.3	-0.1	-0.2	-0.6	-0.1	-0.1	NA	-0.1	-0.1	-0.1	-0.1	-0.2	-0.1	-0.6	-0.2	-0.6	-0.4	-0.3	-0.9
Ext-2	-2.0	-1.6	-1.8	-1.6	-2.0	-1.5	NA	-2.0	-2.0	-2.0	-2.0	-0.8	-0.8	-1.0	-1.0	-1.2	-1.0	-1.0	-0.7
Ext-3	-5.7	-5.4	-5.2	-4.8	-5.8	-6.0	NA	-5.1	-5.0	-4.8	-3.2	-2.0	-2.2	-2.2	-2.3	-2.5	-2.8	-3.0	-1.7
Ext-4	-5.7	-5.0	-6.2	-5.9	-5.8	-5.5	NA	-5.3	-5.2	-5.0	-3.0	-1.8	-2.0	-1.9	-2.0	-2.1	-2.2	-2.3	-1.5
Ext-5	-4.3	-4.9	-4.2	-3.9	-4.8	-5.0	NA	-4.5	-4.3	-4.2	-4.2	-1.5	-1.9	-1.6	-1.8	-1.9	-1.9	-2.0	-2.2
N-1	-1.5	0.0	NA	-0.1	-0.1	0.0	NA	-1.2	-1.1	-1.0	-1.0	-1.0	-0.9	N/A	-0.7	-0.6	-1.0	-0.7	-0.9
N-2	-1.7	-0.1	NA	-0.1	-0.1	0.0	NA	-0.8	-0.9	-0.9	-0.8	-0.6	-0.8	N/A	-0.6	-0.8	-0.7	-0.5	-0.8
N-3	-0.8	-0.2	NA	-0.2	-0.1	-0.1	NA	-0.2	-0.2	-0.1	-0.2	-0.2	-0.2	N/A	-0.2	-0.2	-0.3	-0.1	-0.1
N-4	-0.3	-0.2	NA	-0.2	-0.1	-0.1	NA	-0.1	-0.1	-0.1	-0.1	-0.1	-0.1	N/A	-0.2	-0.2	-0.3	-0.1	-0.1
N-5	-0.3	-0.6	NA	-0.2	-0.1	-0.1	NA	-0.1	-0.1	-0.1	-0.1	-0.1	-0.1	N/A	-0.2	-0.2	-0.2	-0.1	-0.2
N-6	0.0	-2.1	0.0	-2.4	-2.3	-2.1	NA	-1.5	-1.3	-1.3	-1.2	-1.0	-0.9	-0.9	-0.8	N/A	-0.9	0.0	-0.8
BS-1	-13.3	-12.6	-13.4	-12.8	-12.5	-12.2	-10.5	-7.6	-7.4	-7.0	-7.8	-11.0	-14.4	-4.3	-4.4	-4.8	-4.4	-3.9	-3.9

Measured in inches of H2O

na = not available

Landfill Gas Control Well Vacuum Data
East Northport Landfill, East Northport, New York
for period of record between October, 1999 and November, 2006

Well	7/04	8/04	9/04	10/04	11/04	12/04	1/05	2/05	3/05	4/05	5/05	6/05	7/05	8/05	9/05	10/05	11/05	12/05	1/06
CWI-4	-2.4	-2.8	-2.5	-2.5	-3.0	-2.4	-3.8	-3.8	-3.5	-3.5	-3.0	-2.7	-3.1	-2.9	-2.7	-4.1	-3.4	-3.0	-2.9
CWI-5	-2.5	-2.0	-3.0	-2.6	-3.2	-2.6	-4.0	-4.2	-3.5	-3.5	-3.1	-2.9	-3.2	-3.0	-2.9	-4.6	-3.8	-2.9	-3.3
CWI-6	-2.8	-2.5	-3.1	-2.5	-3.4	-2.5	-3.9	-4.4	-3.7	-3.7	-3.0	-2.9	-3.3	-3.2	-3.0	-4.7	-3.8	-3.0	-3.5
CWI-7	-2.7	-2.6	-3.0	-2.4	-3.3	-7.4	-3.8	-4.2	-3.6	-3.3	-2.8	-2.8	-3.0	-3.0	-2.3	-4.6	-3.8	-2.9	-3.0
CWII-1	-4.0	-4.2	-3.0	-2.3	-3.1	-2.3	-3.9	-4.1	-3.5	-3.3	-2.6	-2.7	-2.9	-2.8	-2.6	-4.5	-3.8	-2.9	-3.1
CWII-2	-2.2	-2.4	-3.0	-2.3	-3.1	-2.2	-3.5	-4.0	-3.4	-3.4	-2.7	-2.7	-3.0	-2.8	-2.7	-4.3	-3.7	-2.8	-3.0
CWII-3	-2.4	-2.0	-3.1	-2.3	-3.3	-3.0	-3.7	-4.3	-3.4	-3.4	-2.6	-2.7	-3.0	-2.8	-2.6	-4.5	-3.5	-2.8	-3.0
CWII-4	-2.6	-2.7	-3.0	-2.2	-3.3	-0.1	-3.3	-4.1	-3.3	-3.3	-2.4	-2.5	-3.0	-2.5	-2.6	-4.4	-3.8	-2.8	-2.8
CWII-5	-2.3	-2.5	-3.0	-2.2	-0.1	-0.1	-3.3	-4.3	-3.3	-3.1	-2.7	-2.6	-1.9	-1.9	-2.7	-4.0	-3.9	-2.7	-2.8
CWII-6	-1.7	-2.0	0.0	-1.4	0.0	0.0	-1.3	0.0	-1.5	-1.6	-1.7	-1.7	-1.6	-2.7	-1.6	0.0	-0.2	-1.1	-1.4
CWII-7	-1.0	-1.0	0.0	-1.0	0.0	0.0	-1.2	0.0	-1.2	-1.3	-1.5	-1.2	0.0	-1.4	-1.1	0.0	-0.3	-1.0	-1.2
CWII-8	-0.5	-0.6	0.0	-0.1	0.0	-0.1	0.0	0.0	0.0	-0.1	-0.1	-0.1	-1.0	0.0	0.0	0.0	0.0	0.0	0.0
CWII-9	-0.9	-1.0	0.0	-0.7	0.0	-0.9	-0.8	0.0	-0.9	-1.0	-1.1	-0.8	-2.5	-1.0	-0.9	-0.1	-0.2	-0.7	-0.9
NW-1	-2.2	-2.4	-2.3	-2.4	-2.6	-2.5	-3.6	-3.6	-3.3	-3.2	-2.9	-2.7	-3.1	-3.1	-3.0	-4.3	-3.4	-2.6	-2.8
NW-2	-2.8	-2.6	-2.9	-2.6	-2.9	-2.6	-3.6	-4.2	-3.7	-3.6	-3.0	-3.0	-3.0	-3.2	-2.7	-4.5	-3.6	-2.7	-3.3
NW-3	-2.1	-2.0	-2.1	-2.3	-2.5	-2.3	-3.6	-3.5	-3.3	-3.2	-2.8	-2.6	-2.5	-3.0	-2.4	-3.9	-3.2	-2.3	-2.8
NW-4	-1.9	-1.9	-2.2	-2.1	-2.4	-2.3	-3.1	-3.1	-0.1	-2.9	-2.7	-2.5	-2.1	-2.7	-2.5	-3.7	-3.0	-2.2	-2.9
NW-5	-1.6	-1.8	-2.2	-1.8	-2.1	-1.8	-2.0	-2.6	-2.1	-2.4	-2.2	-2.0	-2.2	-2.2	-2.1	-2.5	-2.4	-1.9	-2.3
NW-6	-2.0	-1.8	-1.8	-1.8	-2.0	-1.8	-2.8	-2.5	-2.2	-2.6	-2.0	-2.0	-1.8	-2.0	-2.2	-2.8	-2.3	-1.5	-2.2
Ext-1	-0.9	-0.8	-0.1	-0.1	0.0	-1.7	-2.0	0.0	-2.0	0.0	-0.1	-1.8	-0.6	-0.1	-2.3	-0.1	-0.1	0.0	0.0
Ext-2	-0.9	-1.0	-0.8	-0.7	-0.8	-1.6	NA	-0.9	-2.2	-1.0	-1.2	-1.7	-1.7	-0.8	-0.8	-1.2	-0.9	-0.6	-0.6
Ext-3	-1.6	-1.8	-1.9	-1.7	-2.1	-1.6	-2.6	-2.7	-2.3	-2.6	-2.4	-2.1	-1.5	-2.1	-2.1	-2.8	-2.3	-1.9	-2.1
Ext-4	-1.7	-1.8	-1.7	-1.6	-2.0	-1.5	-2.4	-2.5	-2.4	-2.3	-2.3	-2.0	-1.3	-1.8	-1.9	-2.6	-2.2	-1.7	-2.0
Ext-5	-1.3	-1.5	-1.4	-1.4	-1.6	-1.3	-2.3	-2.1	-2.1	-2.0	-1.7	-1.7	-1.2	-1.7	-1.7	-2.3	-2.0	-1.6	-0.8
N-1	-0.8	-1.0	-1.0	-0.4	-0.1	-0.3	NA	-0.7	-0.5	-0.3	-0.6	-0.6	-0.5	-1.1	-1.1	-0.4	-0.3	-0.3	-0.3
N-2	-0.8	-0.8	-0.6	-0.5	-0.6	-0.7	NA	-0.2	-0.4	-0.3	-0.4	-0.6	-0.3	-0.9	na	-0.7	-0.5	-0.4	-0.4
N-3	-0.2	-0.1	-0.2	-0.1	0.0	-0.1	NA	0.0	-0.1	-0.1	-0.1	-0.1	-0.1	-0.1	-0.1	-0.2	-0.1	-0.1	-0.1
N-4	-0.2	-0.2	-0.3	-0.1	-0.1	-0.2	NA	0.0	N/A	-0.1	-0.1	-0.1	-0.1	-0.1	-0.1	-0.2	-0.1	0.0	0.0
N-5	-0.3	-0.4	-0.2	-0.1	0.0	-0.2	NA	0.0	-0.1	-0.1	-0.1	-0.1	-0.1	-0.1	0.0	-0.2	-0.1	-0.1	-0.1
N-6	-0.9	-1.0	0.0	-0.8	0.0	-0.1	NA	0.0	-0.9	-0.9	-1.0	-0.8	-1.0	-0.7	-0.8	-0.1	-0.2	-0.9	na
BS-1	-3.9	-3.8	-4.3	-4.0	-4.6	-6.0	-6.4	-6.6	-6.0	-5.9	-5.2	-4.7	-4.8	-5.2	-4.3	-6.4	-5.8	-4.4	-4.9

Measured in inches of H2O

na = not available

Landfill Gas Control Well Vacuum Data
East Northport Landfill, East Northport, New York
 for period of record between October, 1999 and November, 2006

Well	2/06	3/06	4/06	5/06	6/06	7/06	8/06	9/06	10/06	11/06	12/06	1/07	2/07	3/07	4/07	5/07	6/07	7/07	8/07
CWI-4	-2.6	-2.6	-3.0	-2.6	-0.1	-3.3	-5.2	-1.2	-2.8	-3.9									
CWI-5	-3.1	-3.2	-2.6	-2.8	0.0	-2.8	-1.9	-3.4	-2.3	-4.4									
CWI-6	-3.1	-3.0	-3.0	-2.9	-0.3	-4.0	-6.4	-2.9	-2.9	-4.7									
CWI-7	-3.0	-2.8	-2.8	-2.8	-0.4	-2.8	-2.4	-3.1	-2.8	-4.5									
CWII-1	-3.0	-3.0	-2.9	-2.7	0.0	-3.2	-6.3	-2.9	-2.6	-4.3									
CWII-2	-2.9	-2.7	-2.8	-2.7	-0.5	-3.5	-5.9	-5.4	-2.6	-4.2									
CWII-3	-2.9	-2.9	-2.7	-2.5	0.0	-2.6	-6.8	-0.6	-2.7	-4.3									
CWII-4	-2.8	-2.4	-2.6	-2.7	-0.9	-3.2	-6.8	-2.7	-2.6	-5.0									
CWII-5	-2.5	-2.6	-2.7	-2.1	0.0	-2.3	-7.0	-2.6	-2.6	-0.3									
CWII-6	-1.4	-1.5	-1.6	-1.9	-0.1	-1.0	-0.2	-1.7	-1.4	-1.7									
CWII-7	-1.0	-1.1	-0.7	-1.4	-0.2	-0.8	-0.2	-1.3	-1.1	-1.5									
CWII-8	0.0	-0.2	0.0	0.0	-0.1	0.0	0.0	0.0	0.0	0.0									
CWII-9	-0.6	-0.7	-1.0	-0.8	-0.9	-0.6	-0.2	-0.9	-0.8	-0.9									
NW-1	-2.8	-2.8	-2.6	-2.2	-2.4	-3.2	-4.0	-3.7	-2.5	-3.2									
NW-2	-2.9	-2.7	-2.6	-2.9	-2.7	-3.4	-4.5	-3.4	-3.2	4.2									
NW-3	-2.9	-2.8	-2.7	-2.7	-2.8	-3.2	-4.0	-3.2	-2.8	-4.0									
NW-4	-3.0	-3.0	-3.0	-2.7	-2.6	-2.4	-3.6	-2.8	-2.6	-4.0									
NW-5	-2.9	-2.6	-2.6	-1.2	-2.5	-2.2	-2.6	-2.3	-2.1	-3.6									
NW-6	-3.0	-2.9	-3.0	-1.6	-2.1	-2.8	-2.8	-2.5	-2.8	-3.1									
Ext-1	0.0	0.0	-0.2	-0.2	-0.3	0.0	-0.7	-0.1	-0.1	-3.6									
Ext-2	-0.8	-0.9	-0.8	-0.8	-0.6	-0.1	-3.0	-0.9	-0.7	-3.4									
Ext-3	-2.8	-2.7	-2.6	-2.2	-1.9	-0.5	-3.3	-2.3	-2.1	-3.3									
Ext-4	-1.9	-1.8	-1.6	-2.1	-2.0	-0.6	-2.0	-2.0	-2.1	-3.2									
Ext-5	-1.6	-1.4	-1.6	-1.7	-1.5	-0.2	-0.1	-1.6	-1.6	-2.4									
N-1	-0.2	-0.4	-0.4	-0.6	0.0	-1.0	-2.8	-1.5	-0.2	-0.2									
N-2	-0.4	-0.8	-0.7	NA	0.0	-0.1	-0.9	-0.3	-0.6	-0.5									
N-3	-0.1	0.0	-0.2	-0.1	-0.1	0.0	-0.3	-0.1	-0.1	-0.1									
N-4	0.0	0.0	-0.1	-0.1	-0.1	0.0	-0.2	-0.1	-0.2	-0.1									
N-5	-0.1	0.0	-1.0	-0.1	-0.1	-0.1	-0.2	-0.2	-0.1	-0.1									
N-6	-0.8	-0.1	-0.2	NA	0.0	-1.1	-0.2	-0.9	-1.0	NA									
BS-1	-4.2	-5.1	-4.6	-4.6	-3.1	-8.5	-10.1	-6.1	-5.1	-7.3									

Measured in inches of H2O
 na = not available