

Project: Spectrum Finishing - Remedial Action  
 Contractor: EnviroTrac Environmental Services  
 CDM Job No: D-006956 Site No. 1-52-029  
 CDM Project Manager: John Blaum

CDM  
 100 Crossways Park West  
 Woodbury, NY 11797  
 Telephone: 516.496.8400  
 Fax: 516.496.8864

### DAILY REPORT

Day: 

S	M	T	W	TH	F	S
---	---	---	---	----	---	---

  
 Date: 8-May-09  
 REPORT No. 139  
 PAGE No. 1

<b>WEATHER</b>	Clear	Partly Cloudy	Overcast	Rain	Snow
<b>TEMP L/H</b>		52/72			
<b>HUMIDITY</b>	Dry	Moderate	High		
<b>WIND</b>	Calm	Light	Moderate	High	
<b>WIND DIR</b>	N	E	S	W	
	NE	SE	SW	NW	

PREPARED BY: F.Robinson TITLE: Inspector

#### AVERAGE FIELD FORCE

Name of Contractor	Title	Hours Worked	Remarks
EnviroTrac	Construction Manager	1x8 hrs	M. Rose
EnviroTrac	Operator	1x8 hrs	B.Gimbel
EnviroTrac	Technician	2x8 hrs	K.Davies, R. Maletta

#### EQUIPMENT AT THE SITE

I = Idle      W = Working

20" Storage Container - W	
Daewoo 450 skidder - W	
Case 621D Front End Loader - W	
CAT 430E Backhoe -W	

#### HEALTH AND SAFETY

Name	Time (From - To)	Task/Level of PPE
		All workers onsite were in level D-PPE

#### CONSTRUCTION ACTIVITIES

<b>Site Representative:</b> Frank Robinson - CDM
<b>Health and Safety Site Officer:</b> N/A
<b>DESCRIPTION OF WORK PERFORMED AND OBSERVED</b>
1-Tailgate H&S meeting performed before the start of the work day.
2-In preparation for sludge sampling on Monday with a DPW representative on site, the following cesspools were opened: CP-9 and 10 (60 Dale St.) CP-10 had no sludge and CP-9 had sludge at the bottom. CP-5 (51 Cabot St.) had sludge and CP-13 (61 Cabot St.) also had sludge. CP-12 (60 Dale St.) had sludge and CP-3 and 4 (50 Dale St.) were dry.
3-



x - Designates report is continued on additional pages

CDM Site Representative: F. Robinson

Project Manager: John Blaum

**PHOTOGRAPHIC LOG**  
**8-May-09**  
**CDM Job No. D-006956**  
**Spectrum Finishing Remedial Action**  
**SITE No. 1-52-029**

<b>PHOTO</b>	<b>DATE</b>	<b>TIME</b>	<b>DESCRIPTION</b>
100_00572.jpg	5/8/2009	AM	CP-13, in front of 61 Cabot St.
100_00574.jpg	5/8/2009	AM	CP-5, in front of 51 Cabot St.
100_00575.jpg	5/8/2009	AM	CP-12, in front of 60 Dale St.
100_00577.jpg	5/8/2009	AM	CP-4, in front of 50 Dale St.
100_00578.jpg	5/8/2009	AM	CP-3, in front of 50 Dale St.

# PHOTOS 5/08/09



100\_00572.jpg - CP-13, in front of 61 Cabot St.



100\_00574.jpg - CP-5, in front of 51 Cabot St.



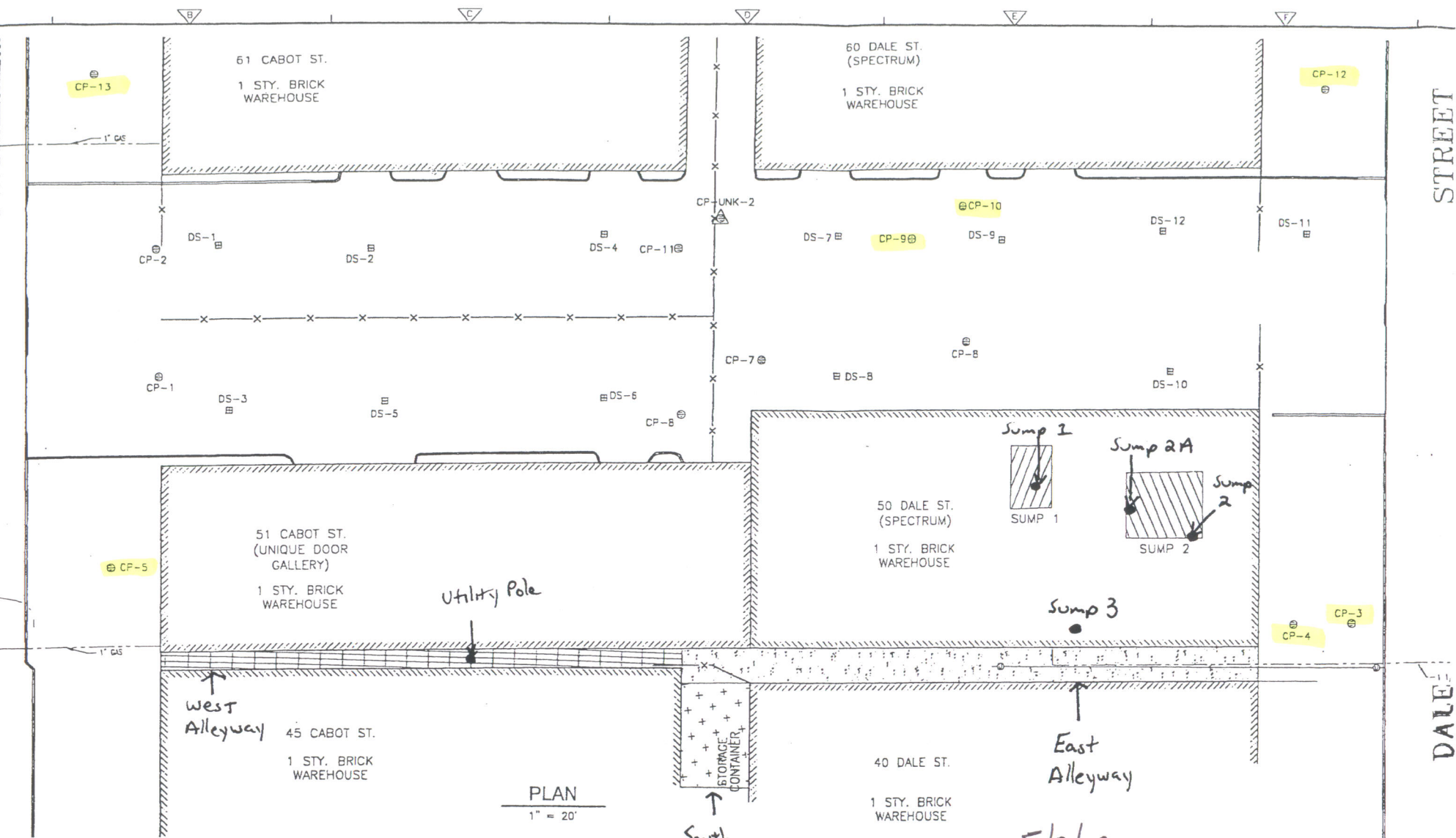
**100\_00575.jpg - CP-12, in front of 60 Dale St.**



**100\_00577.jpg - CP-4, in front of 50 Dale St.**



100\_00578 - CP-3, in front of 50 Dale St.



STREET

DALE

61 CABOT ST.  
1 STY. BRICK WAREHOUSE

60 DALE ST.  
(SPECTRUM)  
1 STY. BRICK WAREHOUSE

51 CABOT ST.  
(UNIQUE DOOR GALLERY)  
1 STY. BRICK WAREHOUSE

50 DALE ST.  
(SPECTRUM)  
1 STY. BRICK WAREHOUSE

45 CABOT ST.  
1 STY. BRICK WAREHOUSE

40 DALE ST.  
1 STY. BRICK WAREHOUSE

PLAN  
1" = 20'

5/8/09  
Work Areas

Utility Pole

West Alleyway

East Alleyway

South Alleyway

STORAGE CONTAINER

Sump 1  
SUMP 1

Sump 2A  
Sump 2  
SUMP 2

Sump 3

CP-13

CP-12

CP-5

CP-3  
CP-4

CP-UNK-2

CP-10

CP-9

CP-2

CP-1

CP-8

CP-7

CP-8

DS-1

DS-2

DS-4

CP-11

DS-7

DS-9

DS-12

DS-11

DS-3

DS-5

DS-6

DS-8

DS-10

1" GAS

1" GAS