

Project: Spectrum Finishing - Remedial Action
 Contractor: EnviroTrac Environmental Services
 CDM Job No: D-006956 Site No. 1-52-029
 CDM Project Manager: John Blaum

CDM
 100 Crossways Park West
 Woodbury, NY 11797
 Telephone: 516.496.8400
 Fax: 516.496.8864

DAILY REPORT

Day:

S	M	T	W	TH	F	S
---	---	---	---	----	---	---

 Date: 23-Apr-09
 REPORT No. 128
 PAGE No. 1

WEATHER	Clear	Partly Cloudy	Overcast	Rain	Snow
TEMP L/H		42/58			
HUMIDITY	Dry	Moderate	High		
WIND	Calm	Light	Moderate	High	
WIND DIR	N	E	S	W	
	NE	SE	SW	NW	

PREPARED BY: F.Robinson TITLE: Inspector

AVERAGE FIELD FORCE

Name of Contractor	Title	Hours Worked	Remarks
EnviroTrac	Construction Manager	2x8 hrs	M.Rose, J.Szymanski
EnviroTrac	Operator	2x8 hrs	B.Gimbel, J. Byrnes
EnviroTrac	Technician	2x8 hrs	R.Maletta, K.Davies

EQUIPMENT AT THE SITE

I = Idle W = Working

20" Storage Container - W	
Case CX130 Excavator - W	
Case 621D Front End Loader - W	
Daewoo 450 skidder - W	
Stow Cutter 3 Concrete Saw - W	

HEALTH AND SAFETY

Name	Time (From - To)	Task/Level of PPE
		All workers onsite were in level D-PPE

CONSTRUCTION ACTIVITIES

Site Representative: Frank Robinson - CDM
Health and Safety Site Officer: N/A
DESCRIPTION OF WORK PERFORMED AND OBSERVED
1-Tailgate H&S meeting performed before the start of the work day.
2-EnviroTrac finished backfilling and compacting the excavation to a rough grade.
3-EnviroTrac trimmed the perimeter of the concrete slab with a walk behind concrete saw.



x - Designates report is continued on additional pages

CDM Site Representative: F. Robinson

Project Manager: John Blaum

PHOTOGRAPHIC LOG
23-Apr-09
CDM Job No. D-006956
Spectrum Finishing Remedial Action
SITE No. 1-52-029

PHOTO	DATE	TIME	DESCRIPTION
100_00455.jpg	4/23/2009	AM	Saw cutting concrete slab
100_00456.jpg	4/23/2009	PM	Finished saw cutting north side of concrete slab
100_00457.jpg	4/23/2009	PM	Finished saw cutting south side of concrete slab
100_00458.jpg	4/23/2009	PM	Finished saw cutting west side of concrete slab
100_00459.jpg	4/23/2009	PM	Excavation at the end of the day, looking east
100_00460.jpg	4/23/2009	PM	Excavation at the end of the day, looking west

PHOTOS 4/23/09



100_00455.jpg - Saw cutting concrete slab



100_00456.jpg - Finished saw cutting north side of concrete slab



100_00457.jpg - Finished saw cutting south side of concrete slab



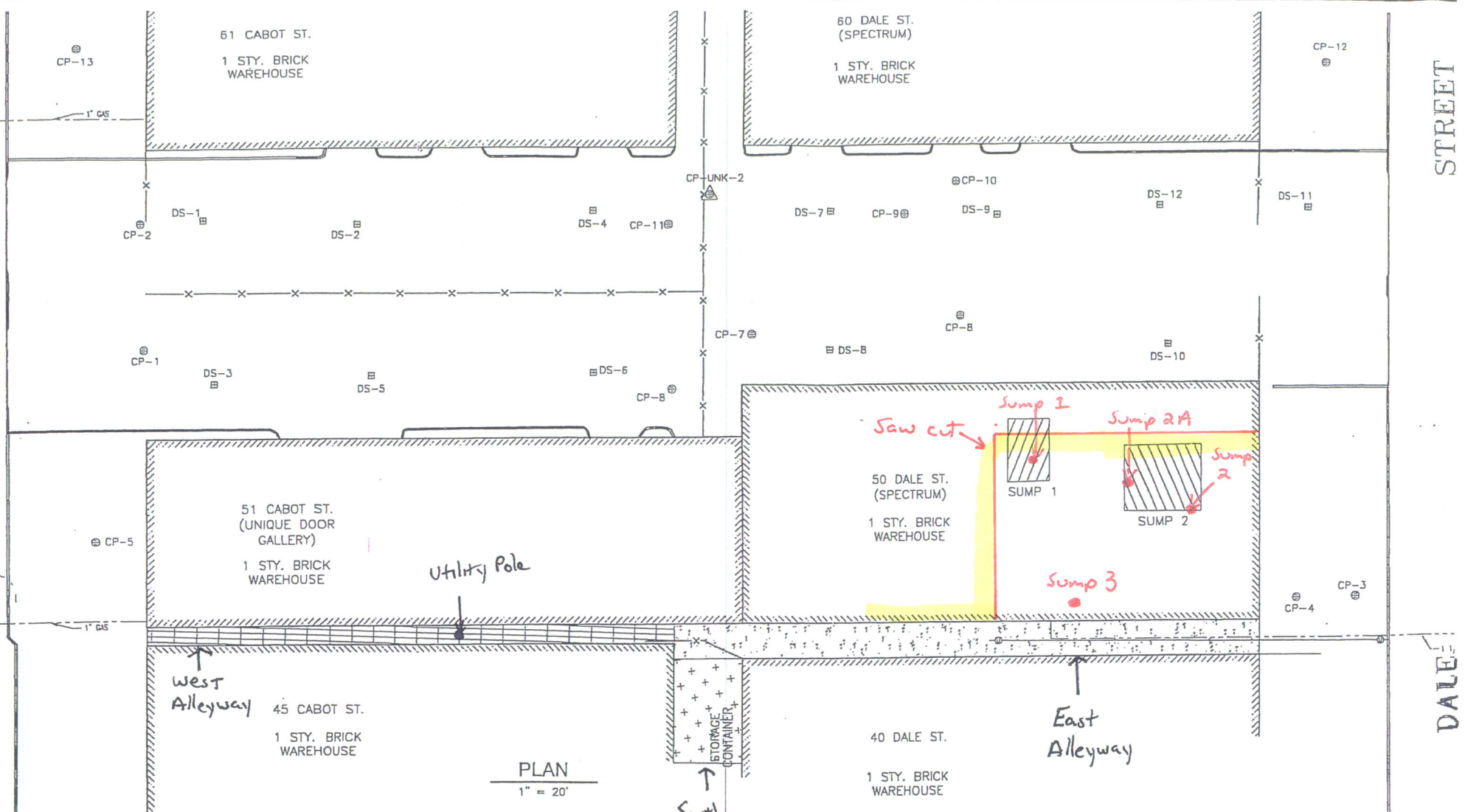
100_00458.jpg - Finished saw cutting west side of concrete slab



100_00459.jpg - Excavation at the end of the day, looking east



100_00460.jpg - Excavation at the end of the day, looking west



STREET

DALE STREET

61 CABOT ST.
1 STY. BRICK WAREHOUSE

60 DALE ST. (SPECTRUM)
1 STY. BRICK WAREHOUSE

51 CABOT ST. (UNIQUE DOOR GALLERY)
1 STY. BRICK WAREHOUSE

50 DALE ST. (SPECTRUM)
1 STY. BRICK WAREHOUSE

West Alleyway
45 CABOT ST.
1 STY. BRICK WAREHOUSE

40 DALE ST.
1 STY. BRICK WAREHOUSE

PLAN
1" = 20'

South Alleyway

East Alleyway

4/23/09

Work Areas

CP-13

CP-12

CP-2

CP-UNK-2

CP-10

DS-1

DS-4

CP-11

DS-7

CP-9

DS-9

DS-12

DS-11

CP-1

DS-3

DS-5

DS-6

CP-8

CP-7

DS-8

CP-8

DS-10

CP-5

CP-4

CP-3

STORAGE CONTAINER

Utility Pole

1" GAS

1" GAS