

Project: Spectrum Finishing - Remedial Action  
 Contractor: EnviroTrac Environmental Services  
 CDM Job No: D-006956 Site No. 1-52-029  
 CDM Project Manager: John Blaum

CDM  
 100 Crossways Park West  
 Woodbury, NY 11797  
 Telephone: 516.496.8400  
 Fax: 516.496.8864

### DAILY REPORT

Day: 

S	M	T	W	TH	F	S
---	---	---	---	----	---	---

  
 Date: 13-Apr-09  
 REPORT No. 120  
 PAGE No. 1

<b>WEATHER</b>	Clear	Partly Cloudy	Overcast	Rain	Snow
<b>TEMP L/H</b>		32/52			
<b>HUMIDITY</b>	Dry	Moderate	High		
<b>WIND</b>	Calm	Light	Moderate	High	
<b>WIND DIR</b>	N	E	S	W	
	NE	SE	SW	NW	

PREPARED BY: F.Robinson TITLE: Inspector

#### AVERAGE FIELD FORCE

Name of Contractor	Title	Hours Worked	Remarks
EnviroTrac	Construction Manager	1x8 hrs	M.Rose
EnviroTrac	Operator	2x8 hrs	J.Byrnes, B.Gimbel
EnviroTrac	Technician	2x8 hrs	R.Maletta, K.Davies

#### EQUIPMENT AT THE SITE

I = Idle      W = Working

20" Storage Container - W	
Case CX130 Excavator - W	
Case 621D Front End Loader - W	
Daewoo 450 skidder - W	

#### HEALTH AND SAFETY

Name	Time (From - To)	Task/Level of PPE
All workers onsite were in modified level D-PPE (tyvek and booties)		

#### CONSTRUCTION ACTIVITIES

<b>Site Representative:</b> Frank Robinson - CDM
<b>Health and Safety Site Officer:</b> N/A
<b>DESCRIPTION OF WORK PERFORMED AND OBSERVED</b>
1-Tailgate H&S meeting performed before the start of the work day. 2-Two (2) air monitoring stations for dust and VOC;s were set up.
3-EnviroTrac filled in the deeper sections of the excavation, sumps 1 and 3, by using material from other parts of the excavation.
4-A geotextile fabric delineation barrier was install at the bottom of the excavation. The center of the excavation was not installed so that the excavator can work in the excavation.

x - Designates report is continued on additional pages

CDM Site Representative: F. Robinson      Project Manager: John Blaum

**PHOTOGRAPHIC LOG**  
**13-Apr-09**  
**CDM Job No. D-006956**  
**Spectrum Finishing Remedial Action**  
**SITE No. 1-52-029**

<b>PHOTO</b>	<b>DATE</b>	<b>TIME</b>	<b>DESCRIPTION</b>
100_00348.jpg	4/13/2009	AM	Filling in sump-1 using material from squaring up excavation
100_00350.jpg	4/13/2009	AM	Finished filling in sump-3
100_00351.jpg	4/13/2009	AM	Finished filling in sump-1
100_00353.jpg	4/13/2009	PM	Excavation at the end of the day with geotextile fabric installed

# PHOTOS 4/13/09



100\_00348.jpg - Filling in sump-1 using material from squaring up excavation



100\_00350.jpg - Finished filling up sump-3.

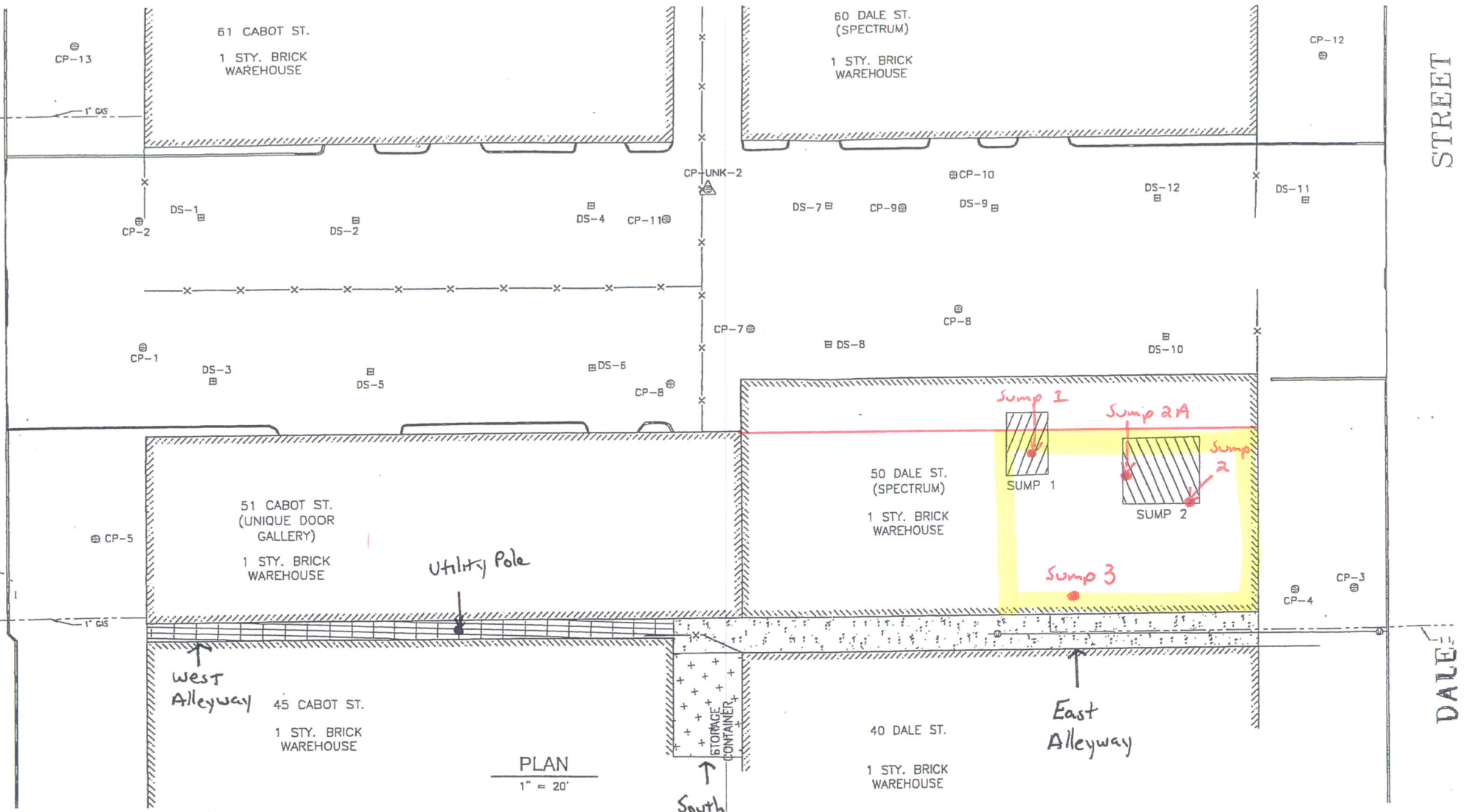




100\_00351.jpg - Finished filling up sump-1.



100\_00353.jpg - Excavation at the end of the day with the geotextile fabric installed.



4/13/09

Work Area