

Project: Spectrum Finishing - Remedial Action
 Contractor: EnviroTrac Environmental Services
 CDM Job No: D-006956 Site No. 1-52-029
 CDM Project Manager: John Blaum

CDM
 100 Crossways Park West
 Woodbury, NY 11797
 Telephone: 516.496.8400
 Fax: 516.496.8864

DAILY REPORT

Day:

S	M	T	W	TH	F	S
---	---	---	---	----	---	---

 Date: 1-Apr-09
 REPORT No. 112
 PAGE No. 1

WEATHER	Clear	Partly Cloudy	Overcast	Rain	Snow
TEMP L/H		41/46			
HUMIDITY	Dry	Moderate	High		
WIND	Calm	Light	Moderate	High	
WIND DIR	N	E	S	W	
	NE	SE	SW	NW	

PREPARED BY: F.Robinson TITLE: Inspector

AVERAGE FIELD FORCE

Name of Contractor	Title	Hours Worked	Remarks
EnviroTrac	Construction Manager	1x8 hrs	J.Szymanski
EnviroTrac	Operator	2x8 hrs	B.Byrnes, B.Gimbel
EnviroTrac	Technician	2x8 hrs	R.Maletta, K.Davies

EQUIPMENT AT THE SITE I = Idle W = Working

20" Storage Container - W	
Case CX130 Excavator - W	
Case 621D Front End Loader - W	
Daewoo 450 skidder - W	

HEALTH AND SAFETY

Name	Time (From - To)	Task/Level of PPE
All workers onsite were in modified level D-PPE (tyvek and booties)		

CONSTRUCTION ACTIVITIES

Site Representative: Frank Robinson - CDM
Health and Safety Site Officer: N/A
DESCRIPTION OF WORK PERFORMED AND OBSERVED
1-Tailgate H&S meeting performed before the start of the work day. monitoring for dust and VOC's (2 stations) were set up. 2-Air
3-Removed rest of the east slab, approximately 28'x18' and removed approximately 20' of the north foundation wall. Haz and non-haz concrete was separated out.
4-Excavated approximately 35'x4' and 1' deep next to east foundation wall. An approximate 17'x14' area was excavated in the NE corner down to 2' 3' of green stained soil located in the area of green found yesterday. This area was mostly solid green with solid material that broke into chunks. The green only went down 2-3' and went quickly to "clean" material, non visibly contaminated.

x - Designates report is continued on additional pages

CDM Site Representative: F. Robinson Project Manager: John Blaum

PHOTOGRAPHIC LOG
1-Apr-09
CDM Job No. D-006956
Spectrum Finishing Remedial Action
SITE No. 1-52-029

PHOTO	DATE	TIME	DESCRIPTION
100_00302.jpg	4/1/2009	AM	Contaminated green chunk from NE corner in excavator bucket.
100_00306.jpg	4/1/2009	AM	Contaminated green soil/chunks from NE corner
100_003007.jpg	4/1/2009	AM	Contaminated green soil/chunks from NE corner being removed.
100_00310.jpg	4/1/2009	PM	End of day excavation looking NE
100_00311.jpg	4/1/2009	PM	End of day excavation looking N
100_00312.jpg	4/1/2009	PM	End of day excavation looking NW

PHOTOS 4/01/09



100_00302.jpg - Contaminated green chunk from NE corner in excavator bucket.



100_00306.jpg - Contaminated green soil/chunks from NE corner.



100_00307.jpg - Contaminated green soil/chunks in NE corner being removed by the excavator.



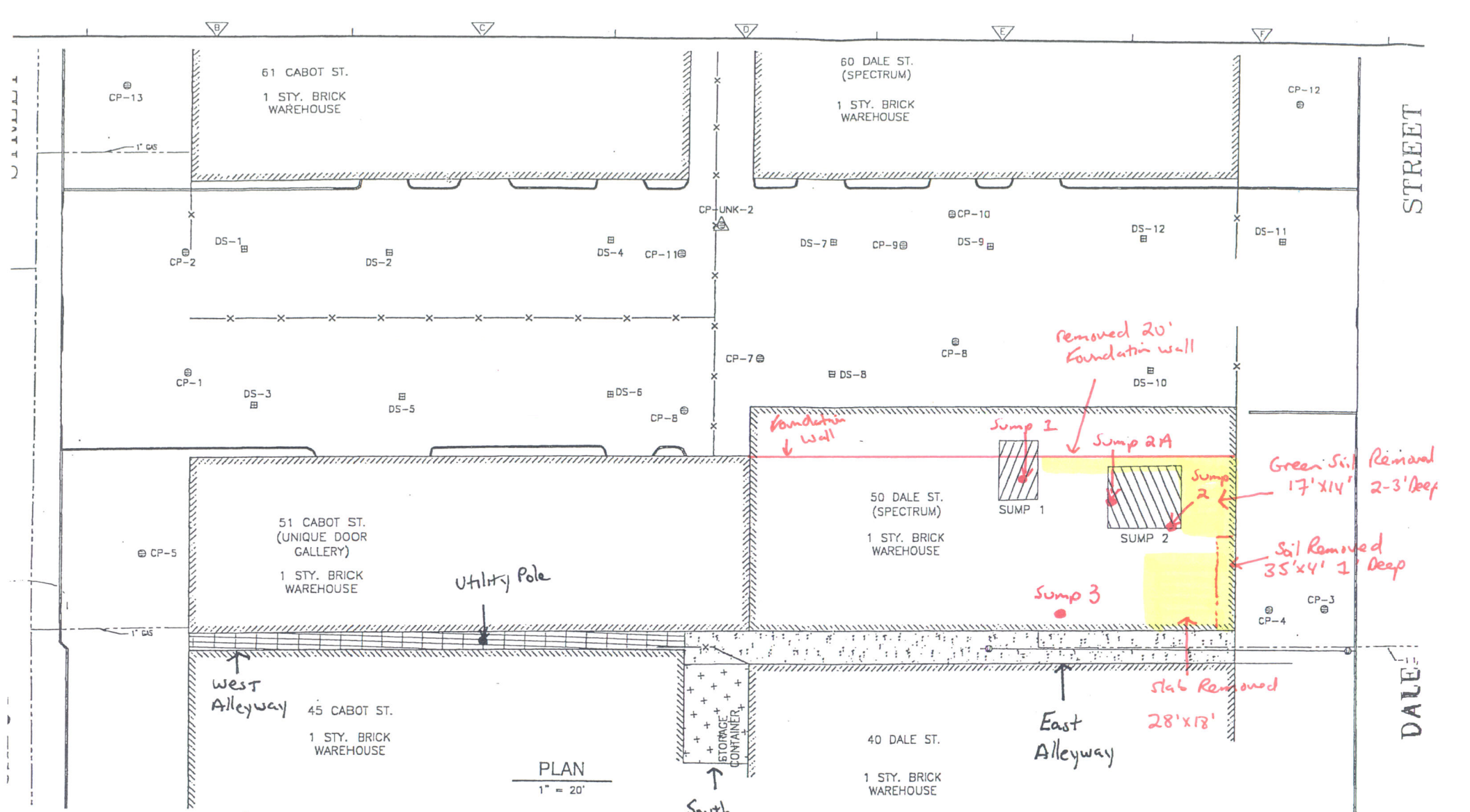
100_00310.jpg - Excavation at the end of the day looking NE.



100_00311.jpg - Excavation at the end of the day looking North



100_00312.jpg - Excavation at the end of the day looking NW



PLAN
1" = 20'

Work Areas

4/1/09

Removed 20' Foundation wall

Foundation Wall

Sump 1

Sump 2A

Sump 2

Sump 3

Green Soil Remnant 17'x14' 2-3' deep

Soil Removed 35'x4' 1' deep

Slab Removed 28'x18'