

Project: Spectrum Finishing - Remedial Action  
 Contractor: EnviroTrac Environmental Services  
 CDM Job No: D-006956 Site No. 1-52-029  
 CDM Project Manager: John Blaum

CDM  
 100 Crossways Park West  
 Woodbury, NY 11797  
 Telephone: 516.496.8400  
 Fax: 516.496.8864

### DAILY REPORT

Day: 

S	M	T	W	TH	F	S
---	---	---	---	----	---	---

  
 Date: 26-Mar-09  
 REPORT No. 108  
 PAGE No. 1

<b>WEATHER</b>	Clear	Partly Cloudy	Overcast	Rain	Snow
<b>TEMP L/H</b>		40/44			
<b>HUMIDITY</b>	Dry	Moderate	High		
<b>WIND</b>	Calm	Light	Moderate	High	
<b>WIND DIR</b>	N	E	S	W	
	NE	SE	SW	NW	

PREPARED BY: F.Robinson TITLE: Inspector

#### AVERAGE FIELD FORCE

Name of Contractor	Title	Hours Worked	Remarks
EnviroTrac	Construction Manager	2x8 hrs	M.Rose, J.Szymanski
EnviroTrac	Operator	2x8 hrs	B.Byrnes, B.Gimbel
EnviroTrac	Technician	2x8 hrs	R.Maletta, K.Davies

#### EQUIPMENT AT THE SITE

I = Idle      W = Working

20" Storage Container - W	
Case CX130 Excavator - W	
Case 621D Front End Loader - W	
Daewoo 450 skidder - W	

#### HEALTH AND SAFETY

Name	Time (From - To)	Task/Level of PPE
All workers onsite were in modified level D-PPE (tyvek and booties)		

#### CONSTRUCTION ACTIVITIES

<b>Site Representative:</b> Frank Robinson - CDM	
<b>Health and Safety Site Officer:</b> N/A	
<b>DESCRIPTION OF WORK PERFORMED AND OBSERVED</b>	
1-Tailgate H&S meeting performed before the start of the work day. monitoring for dust and VOC's (2 stations) were set up.	2-Air
3-Finished excavating around and under sump-3. Much green and red material was removed including a lot of solid chunks. The excavation was stopped when the visible contamination ended.	



x - Designates report is continued on additional pages

CDM Site Representative: F. Robinson

Project Manager: John Blaum

**PHOTOGRAPHIC LOG**  
**26-Mar-09**  
**CDM Job No. D-006956**  
**Spectrum Finishing Remedial Action**  
**SITE No. 1-52-029**

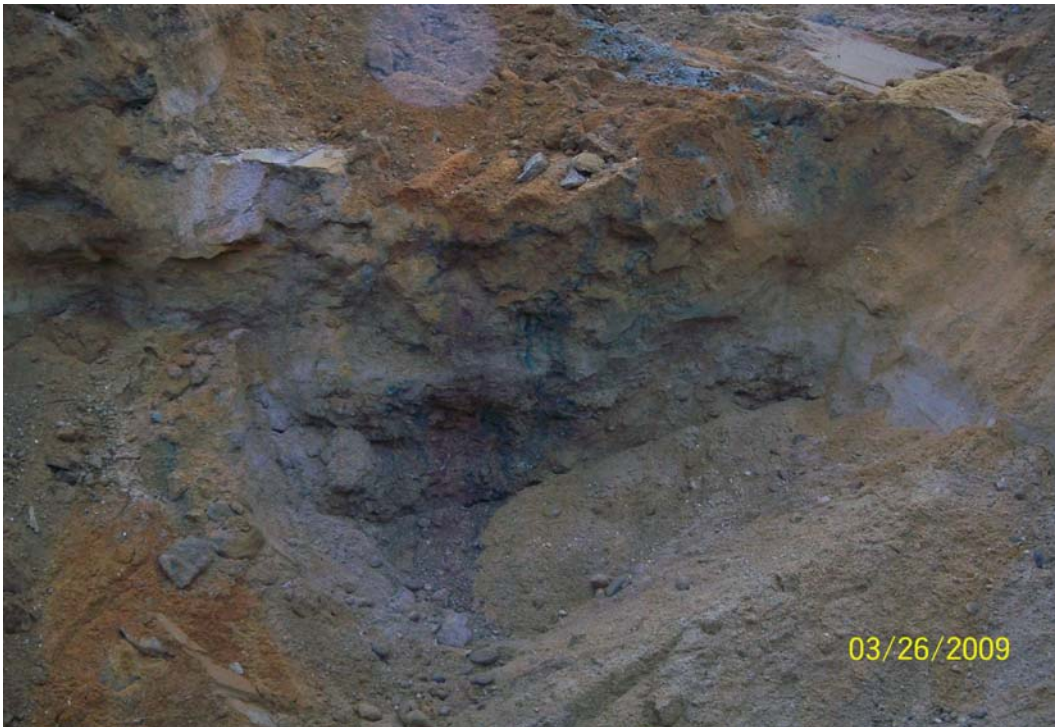
<b>PHOTO</b>	<b>DATE</b>	<b>TIME</b>	<b>DESCRIPTION</b>
100_00215.jpg	3/26/2009	AM	Chunks of red and green contaminated material out of the area around sump-3
100_00217.jpg	3/26/2009	AM	Red and green stained soil north of sump-3
100_00222.jpg	3/26/2009	PM	Excavation at the end of the day, panoramic view looking north
100_00224.jpg	3/26/2009	PM	Excavation at the end of the day, view looking south
100_00225.jpg	3/26/2009	PM	Excavation at the end of the day, view looking west
100_00226.jpg	3/26/2009	PM	Mt. Spectrum, hazardous waste soil stockpile

# PHOTOS 3/26/09



x8 hrs

**100\_00215.jpg - Chunks of red and green contaminated material out of the area around sump-3**



**100\_00217.jpg - Red and green stained soil north of sump-3.**



**100\_00222.jpg - Excavation at the end of the day, panoramic view looking north.**



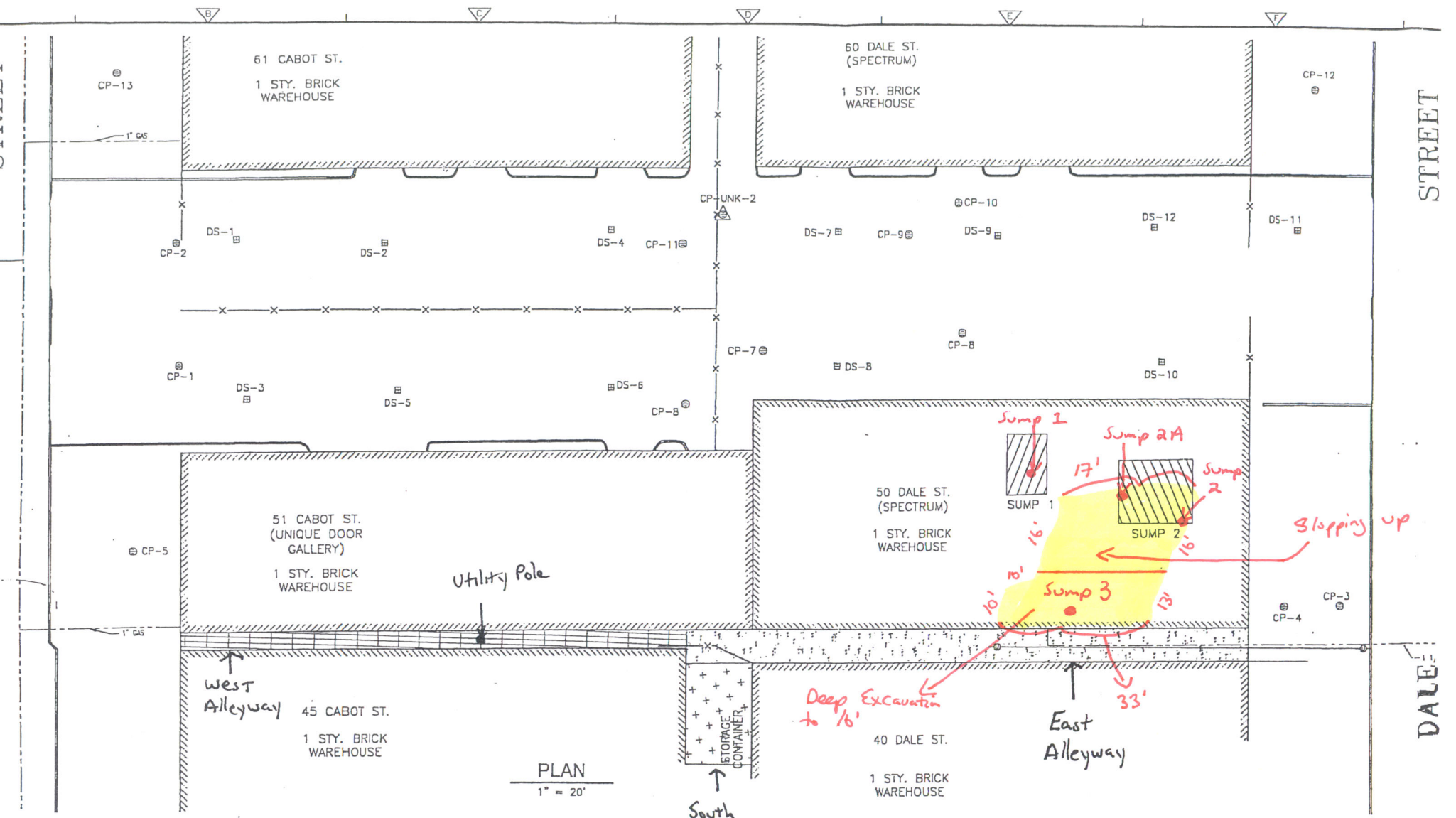
**100\_00224.jpg - Excavation at the end of the day, looking south.**



**100\_00225.jpg - Excavation at the end of the day, looking south.**




**100\_00226.jpg - Mt. Spectrum, hazardous waste soil stockpile**



PLAN  
1" = 20'

3/26/09

 Work Areas

STREET  
DALE