

**Post Remediation Groundwater Monitoring Plan  
Operable Unit – 1 (OU-1)  
Utility Manufacturing Company  
700 Main Street  
Westbury, New York  
04103**

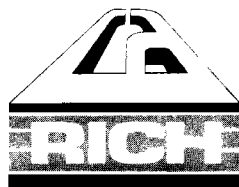
**April 2003**

**Prepared for:**

**Utility Manufacturing Company  
700 Main Street  
Westbury, New York**

**Prepared by:**

**CA RICH CONSULTANTS, INC.  
17 Dupont Street  
Plainview, New York 11803**



**CA RICH CONSULTANTS, INC.**

CERTIFIED GROUND-WATER AND  
ENVIRONMENTAL SPECIALISTS

February 26, 2003  
Revised: April 3, 2003

**NYSDEC**  
Division of Hazardous Waste Remediation  
50 Wolf Road  
Albany, New York 10591-5805

Attention: Jeffery Dyber, P.E.

Re: **Post-Remediation Groundwater Monitoring Plan**  
**Operable Unit – 1 (OU-1)**  
**Utility Manufacturing Company**  
**700 Main Street**  
**Westbury, New York**  
**Site Number: 130043H**

Dear Mr. Dyber:

CA RICH Consultants, Inc. (CA RICH) is pleased to provide you with the following Post-Remediation Groundwater Monitoring Plan for OU-1 of the Utility Manufacturing site. This Plan was prepared by CA RICH on behalf of the Utility Manufacturing Company (Utility) in accordance with an Order on Consent, Index Number W1-0795-97-06. For the purposes of this document, the contaminants of concern are perchloroethene (a.k.a. PCE or tetrachloroethene); trichloroethene (TCE); 1,1,1-trichloroethane (TCA) and their degradation products.

This Plan includes the following items:

- Background;
- Post-Remediation Groundwater Monitoring Procedures;
- Post-Remediation Groundwater Monitoring Reporting; and
- Schedule.

**1.0 Background**

An Interim Remedial Measure (IRM) was performed at the Utility site from September 1991 through December 1992. This consisted of the installation of two air sparge points, two clustered soil vapor extraction wells and a multidepth clustered monitoring well. An air compressor, regenerative blower and carbon units were installed in an equipment container located on the property. The air sparging/soil vapor extraction system operated from November 15, 2001 to December 19, 2002. In accordance with the IRM Work Plan, operation of the air sparging/soil vapor extraction system ceased after collection of the Fourth Quarter 2002 round of groundwater monitoring.

## CA RICH CONSULTANTS, INC.

---

A series of previous reports were performed at this site by both the NYSDEC and Utility. The following is a partial list of these previous documents.

<u>Investigation</u>	<u>Date</u>
NYS Superfund Contract, Site Investigation Report New Cassel Industrial Area (Ref. 1)	February 1995
NYS Superfund Contract, Multisite PSA Report New Cassel Industrial Area (Ref. 2)	March 1996
NYS Superfund Contract, Multisite PSA Report New Cassel Industrial Area (Ref. 3)	March 1997
Focused Remedial Investigation, Utility Manufacturing/ Wonder King, Anson Environmental, Ltd. (Ref. 4)	January 1999
On-Site Groundwater Investigation, Utility Manufacturing/ Wonder King, Anson Environmental, Ltd. (Ref. 5)	December 2000
Interim Remedial Measures Work Plan Utility Manufacturing Company 700 Main Street, Westbury, New York (Ref. 6)	August 2001
Interim Remedial Measures Report and Operation and Maintenance (O&M) Manual Utility Manufacturing Company 700 Main Street, Westbury, New York (Ref. 7)	December 2001
Quarterly Monitoring Report, Fourth Quarter 2002 Utility Manufacturing Company 700 Main Street, Westbury, New York (Ref. 8)	January 2003

### 2.0 Post-Remediation Groundwater Monitoring Procedures

A program of post-remediation groundwater monitoring will be performed on the monitoring wells installed at this site. These wells include MW-1, MW-2, MW-3, MW-4, MW-5R, MW-6, MDCW-7S, MDCW-7I and MDCW-7D. The locations of the wells are presented on the attached Figure. The testing will include halogenated volatile organic compounds using EPA Method 8021 or its equivalent.

A volume of at least three casing volumes of groundwater will be purged from each monitoring well and collected in a container using a submersible pump. The samples will then be collected directly from the pump discharge.

As the goal of this Plan is to obtain post-remedial confirmation of the air sparging/soil vapor extraction effort, the Quality Assurance/Quality Control (QA/QC) procedures will be similar to those used during the operation of the remediation system. One sample from each well will be collected and placed into laboratory issued bottles. These will in turn be placed in an ice-filled cooler and delivered to a ELAP-Certified laboratory under Chain-Of-Custody documentation. Trip blanks, field blanks, duplicates and matrix spikes will not be performed.

### 3.0 Post-Remediation Groundwater Monitoring Reporting

Once the sampling is completed and the results are received from the laboratory, a report will be prepared. The report will include the following.

- A description of the work performed;
- The results of the laboratory analysis; and
- Graphs of the concentration of perchloroethene versus time.

The graphs will be updated after each sampling round and a report will be submitted to the NYSDEC.

### 4.0 Schedule

The groundwater monitoring program will begin five months from the time the air sparging and soil vapor extraction system was turned off, which corresponds to June 2003. Monitoring will be performed annually thereafter for a period of two years (i.e.: June 2003 to June 2005).

Graphs of the concentration of perchloroethene versus time will be compiled after each round of monitoring. The post-remediation groundwater monitoring program will be deemed completed after the June 2003, June 2004 and June 2005 samples are analyzed and the VOC concentrations in site wells MW-4, MW-5R, MW-6 and MDCW-7S, 7I & 7D do not exceed all four of the following criteria:

- the concentration in the upgradient well or wells as determined by the NYSDEC;
- the highest concentration measured in any of the project wells during the third quarter 2002;
- the highest concentration measured in any of the project wells during the fourth quarter 2002;
- the NYSDEC groundwater standards.

If any analyte exceeds all four criteria in wells MW-4, MW-5R, MW-6 and MDCW-7S, 7I & 7D, the NYSDEC will determine if additional monitoring and/or remediation is necessary.

If there are any questions regarding this Plan, please do not hesitate to call our office.

Sincerely,

**CA RICH CONSULTANTS, INC.**



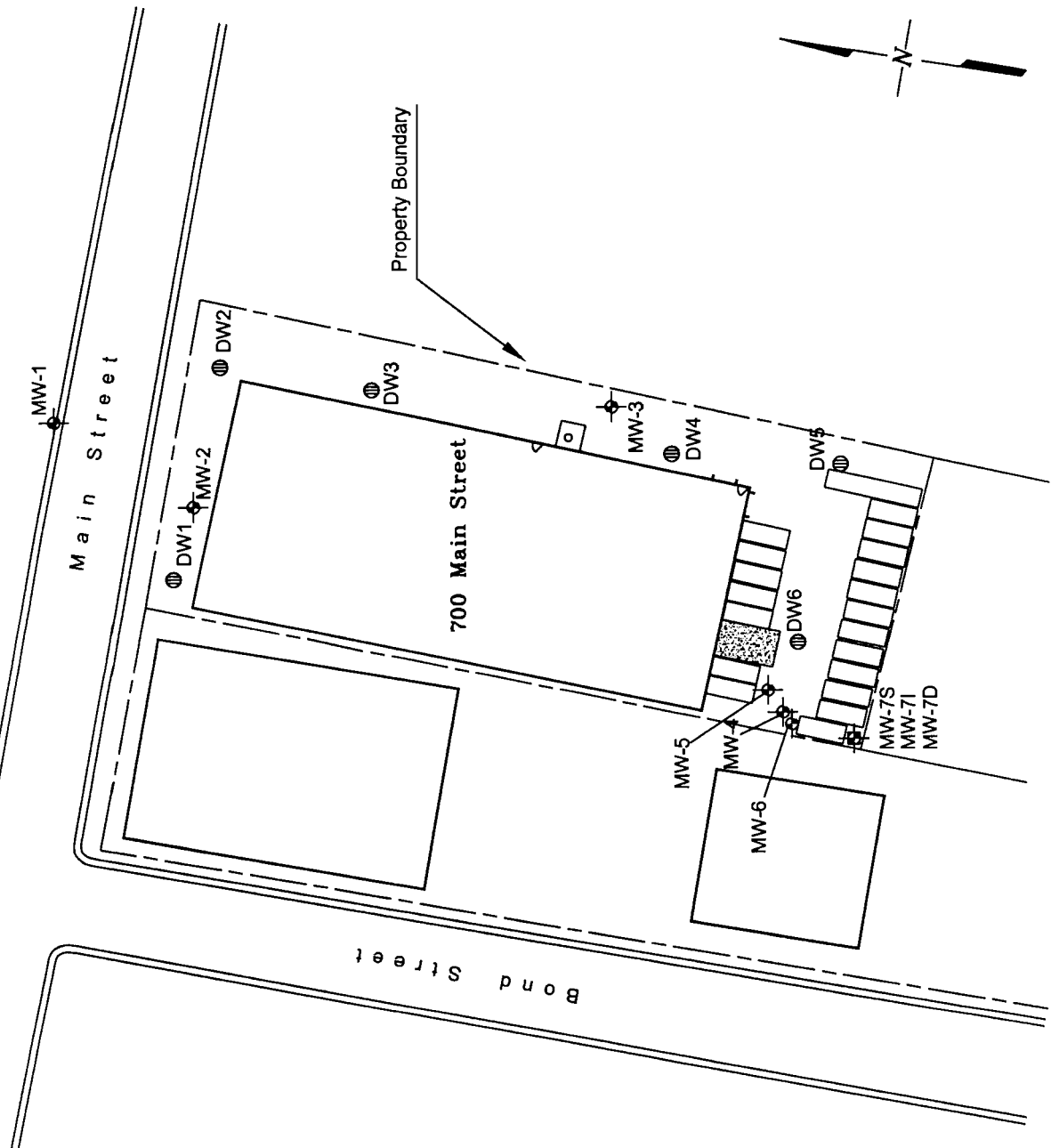
Eric A. Weinstock  
Associate

cc: Audie Kranz  
Miriam Villani, Esq.  
Alali Tamuno, Esq.  
Jacqueline Nealson






**References**

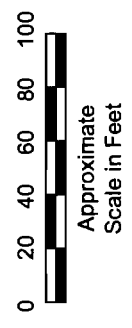
1. NYSDEC (February 1995), NYS Superfund Contract, Site Investigation Report, New Cassel Industrial Area.
2. NYSDEC, (March 1996), NYS Superfund Contract, Multisite PSA Report, New Cassel Industrial Area.
3. NYSDEC, (March 1997), NYS Superfund Contract, Multisite PSA Report, New Cassel Industrial Area.
4. Anson Environmental, Ltd., (January 1999), Focused Remedial Investigation, Utility Manufacturing/Wonder King,
5. Anson Environmental, Ltd , (December 2000), On-Site Groundwater Investigation, Utility Manufacturing/Wonder King.
6. CA RICH, August 2001, Interim Remedial Measures Work Plan, Utility Manufacturing Company, 700 Main Street, Westbury, New York
7. CA RICH, December 2001, Interim Remedial Measures Report, Utility Manufacturing Company, 700 Main Street, Westbury, New York
8. CA RICH, January 2003, Quarterly Monitoring Report, Fourth Quarter 2002, Utility Manufacturing Company, 700 Main Street, Westbury, New York

**FIGURE**



**Legend**

-  Drywell
-  Monitoring Well
-  Storage Trailer
-  Concrete Pad For USTs
-  Multi-Depth Cluster Well



<b>CA RICH CONSULTANTS, INC.</b> Certified Ground-Water and Environmental Specialists 17 Dupont Street, Plainville, New York 11803	
<b>Stephen J. Osmundsen, P.E.</b> Consulting Engineer 513 Centre Island Road, Oyster Bay, New York 11771	
<b>TITLE</b>	<b>DATE</b>
SITE PLAN WITH EXISTING MONITORING WELL LOCATIONS	11/29/01
<b>FIGURES</b>	<b>SCALE</b>
1	1" = 50'
<b>DRAWING NO.</b>	<b>DRAWN BY</b>
1130-1A	S.T.M.
	<b>APPROVED BY</b>
	E.A.W.