



COUNTY OF NASSAU
DEPARTMENT OF PUBLIC WORKS
1194 PROSPECT AVENUE
WESTBURY, NEW YORK 11590-2723

November 13, 2015

Mr. Benjamin Rung, P.E., Project Manager
NYS Department of Environmental Conservation
Division of Environmental Remediation
Bureau of Hazardous Site Control
625 Broadway
Albany, New York 12233

Re: Firemen's Training Center (Site #1-30-042)
Post Termination Monitoring Program Sampling Results – Fall 2015

Dear Mr. Rung:

The Nassau County Department of Public Works has completed the Fall 2015 Semi-Annual Post Termination Monitoring round at the Nassau County Fire Service Academy (A.K.A. Firemen's Training Center) site. This program replaces the original termination monitoring program stipulated in the approved 1994 Remediation Monitoring Program for this site. The Post Termination Monitoring results for the revised group of offsite monitoring wells have been included herewith for your review.

The twelve (12) offsite PTM wells selected for sampling in the revised post-termination monitoring program have been divided into two groups for review. The first group has been designated as the ***FTC Core Wells***; and, it includes those monitoring wells (BP-2B, BP-4B, BP-12B, C) which are adjacent to and directly downgradient of the Nassau County Fire Service Academy (see map).

The second group has been designated the ***Eastern Plume wells***; and, these wells (MW-7Br, EW-14D, BP-3B,C, BP-15B,C, BP-10B,C) represent those wells which appear to have been impacted from unknown sources north and east of the original Nassau County Firemen's Training Center offsite monitoring well network and the former Offsite Recovery Well field.

Offsite Post Termination Monitoring Well Summary (FTC Core Wells)

Review of the groundwater sampling results obtained from the four (4) ***FTC Core Wells*** indicates that groundwater collected from these wells is below detectable limits (BDL) for all Volatile Organic Compounds (VOC's) tested; and, this includes the fifteen (15) volatile organic compounds designated for monitoring in the original Remediation Monitoring Plan (RMP) developed for the site in 1994.

NYS Department of Environmental Conservation

November 13, 2015

Page 2

Re: Firemen's Training Center (Site #1-30-042)
Post Termination Monitoring Program Sampling Results – May 2015

Post Termination Monitoring Well Summary (Eastern Plume Wells)

Review of the volatile organic compound results obtained from the group of *Eastern Plume Wells* (see map) indicates that all eight (8) wells have been impacted by varying concentrations of volatile organic compounds. The highest concentration of volatile organic compounds is found in monitoring well MW-7Br where a total of 995 ppb was measured. The lowest total volatile organic concentration was detected in monitoring well BP-10C where a total volatile organic compound concentration of 20 ppb was recorded. Please note Tert – Butyl Alcohol (TBA) was detected in monitoring wells BP-3B (15 ppb), BP-15B (23 ppb), BP-15C (21 ppb) and BP-10C at a concentration of 15 ppb.

The individual volatile organic compounds with the highest concentrations were Tetrachloroethylene (160 ppb/BP-3C), Trichloroethylene (915 ppb/MW-7Br) and Cis-1, 2 Dichloroethylene (87 ppb/BP-3C). The highest concentration and widest variety of compounds were detected in the "B" Hydrogeologic zone (-80 to -140 ft. below msl). A significantly lower number of compounds at lower concentration are found in the "C" Hydrogeologic zone (-180 to -240 ft. below msl).

If you require any additional information regarding this data, please contact Mr. Michael Flaherty, Hydrogeologist III at (516) 571-7514.

Very truly yours,



Shila Shah-Gavnoudias, P.E.
Commissioner of Public Works

SSG:KGA:JLD:rp

Attachment

c: Jane M. Houdek, Attorney for Public Works
Joseph L. Davenport, Unit Head, Water/Wastewater Engineering Unit
Joseph Defranco, Chief, Office of Soil and Groundwater Remediation, NCDH
Michael Flaherty, Hydrogeologist III
Walter J. Parish, P.E., Regional Hazardous Waste Engineer, NYSDEC
Guy Bobersky, P.E., Section Chief, Remedial Bureau, NYSDEC
Tara Rutand, P.E., Environmental Engineer, NYSDEC
Brad Putzig, P.E., Section Chief, Remedial Bureau, NYSDEC
Ralph Ekstrand, Mayor, Village of Farmingdale

FIREMAN'S TRAINING CENTER
SEMI-ANNUAL PTM (revised) SAMPLING RESULTS FOR 2015 (FTC Core Wells)

VOLATILE ORGANICS COMPOUNDS (ppb)

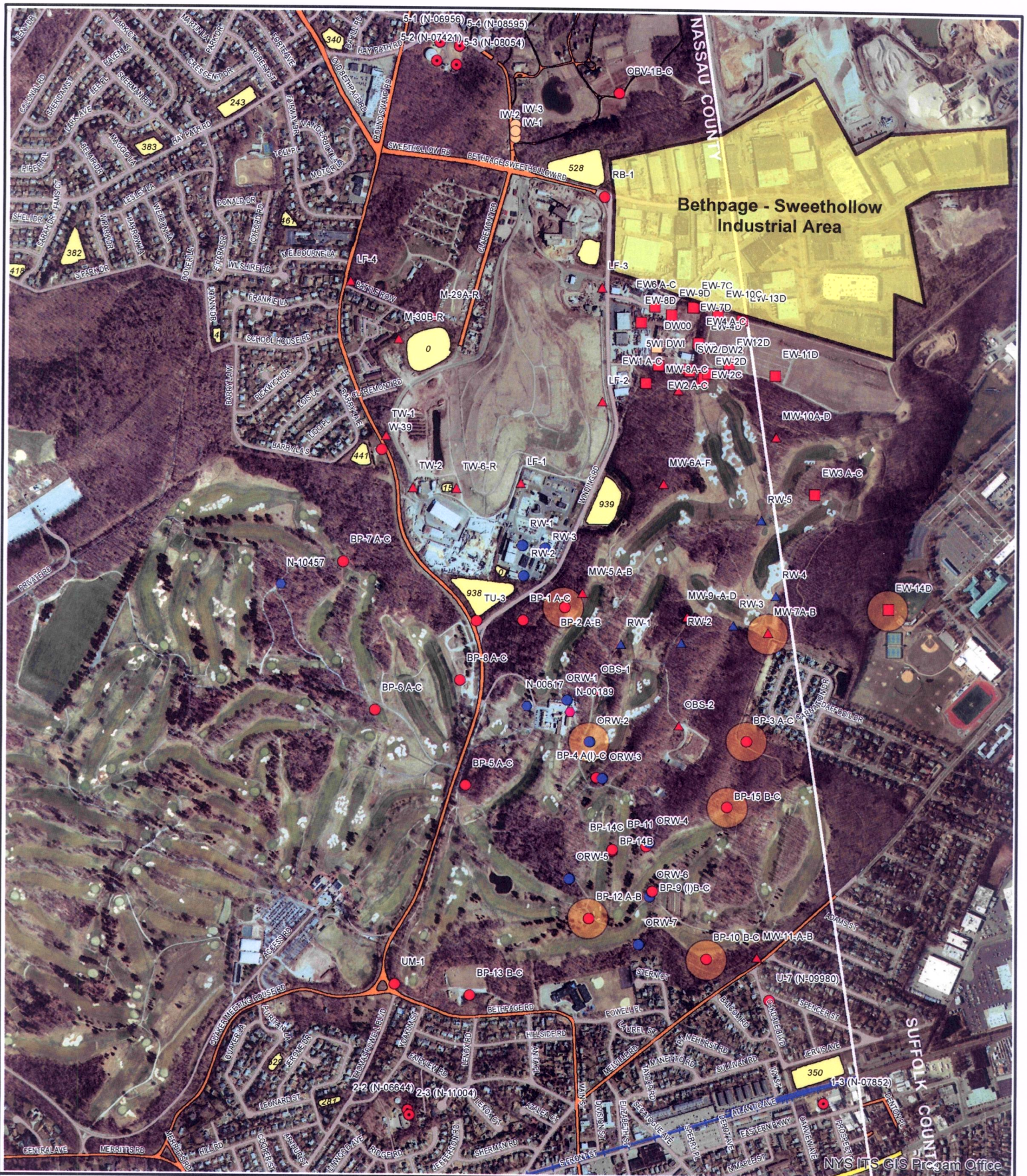
	WELL BP-2B		WELL BP-4B		WELL BP-12B		WELL BP-12C	
	DATE SAMPLED		DATE SAMPLED		DATE SAMPLED		DATE SAMPLED	
1,1,1,2-Tetrachloroethane	4/13/15	BDL	3/16/15	BDL	3/19/15	BDL	3/19/15	BDL
1,1,1-Trichloroethane		BDL		BDL		BDL		BDL
1,1,2-Trichloro-1,1,2-trifluoroethane		BDL		BDL		BDL		BDL
1,1,2-Trichloroethane		BDL		BDL		BDL		BDL
1,1-Dichloroethane		BDL		BDL		BDL		BDL
1,1-Dichloroethene		BDL		BDL		BDL		BDL
1,2,3-Trichlorobenzene		BDL		BDL		BDL		BDL
1,2,3-Trichloropropane		BDL		BDL		BDL		BDL
1,2,4,5-Tetramethylbenzene		BDL		BDL		BDL		BDL
1,2,4-Trimethylbenzene		BDL		BDL		BDL		BDL
1,2-Dichlorobenzene		BDL		BDL		BDL		BDL
1,2-Dichloroethane		BDL		BDL		BDL		BDL
1,2-T-Dichloroethene		BDL		BDL		BDL		BDL
1,3,5-Trimethylbenzene		BDL		BDL		BDL		BDL
1,3-Dichlorobenzene		BDL		BDL		BDL		BDL
1,4-Dichlorobenzene		BDL		BDL		BDL		BDL
Acetone		BDL		BDL		BDL		BDL
Benzene		BDL		BDL		BDL		BDL
Bromochloromethane		BDL		BDL		BDL		BDL
Carbon Tetrachloride		BDL		BDL		BDL		BDL
Chlorobenzene		BDL		BDL		BDL		BDL
Chlorodifluoromethane		BDL		BDL		BDL		BDL
Chloroform		BDL		BDL		BDL		BDL
Chloromethane		BDL		BDL		BDL		BDL
cis-1,2-Dichloroethylene		BDL		BDL		BDL		BDL
Dichlorodifluoromethane		BDL		BDL		BDL		BDL
Ethyl Benzene		BDL		BDL		BDL		BDL
2 - Hexanone		BDL		BDL		BDL		BDL
Isopropylbenzene		BDL		BDL		BDL		BDL
m,p-Xylene		BDL		BDL		BDL		BDL
Methyl t-Butylether (MTBE)		BDL		BDL		BDL		BDL
Methylene Chloride		BDL		BDL		BDL		BDL
Methyl Ethyl Ketone		BDL		BDL		BDL		BDL
Naphthalene		BDL		BDL		BDL		BDL
n-Butyl Benzene		BDL		BDL		BDL		BDL
n-Propylbenzene		BDL		BDL		BDL		BDL
o-Xylene		BDL		BDL		BDL		BDL
p-Ethyltoluene		BDL		BDL		BDL		BDL
p-Isopropyltoluene		BDL		BDL		BDL		BDL
sec-Butyl Benzene		BDL		BDL		BDL		BDL
t-1,2 Dichloroethene		BDL		BDL		BDL		BDL
tert-Butyl Alcohol		BDL		BDL		BDL		BDL
tert-Butyl Benzene		BDL		BDL		BDL		BDL
Tetrachloroethylene		BDL		BDL		BDL		BDL
Toluene		BDL		BDL		BDL		BDL
Trichlorodifluoromethane		BDL		BDL		BDL		BDL
Trichloroethylene		BDL		BDL		BDL		BDL
Vinyl Chloride		BDL		BDL		BDL		BDL
TVOC		0.0		0.0		0.0		0.0

All results in pp

B - Analyte detected in associated Method Blank

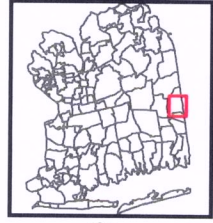
BDL - Below detection limits

- FTC / RMP compound



NYS ITS GIS Program Office

- Legend**
- Fireman's Training Center Area Wells
 - Nassau County Recovery Well
 - Bethpage State Park Inactive Well
 - Plainview WD Public Supply Well
 - Bethpage State Park Irrigation Well
 - S. Farmingdale WD Public Supply Well
 - Claremont Polychemical Site Diffusion Well
 - ▲ T of Oyster Bay Monitoring Well or Well Cluster
 - ▲ T of Oyster Bay Recovery Well
 - Nassau County Injection Well
 - V of Farmingdale Public Supply Well
 - Nassau County Monitoring Well or Well Cluster
 - Proposed PTM Monitoring Wells
 - Recharge Basins



FTC POST TERMINATION MONITORING WELL LOCATIONS

Prepared By: NCDPW - Water/Wastewater
Engineering Unit



0 162.5325 650 975 1,300
Feet

Nassau County



Geographic Information System

This product is for informational purposes only and may not have been prepared for or be suitable for legal, engineering, or accounting purposes. Nassau County makes no representations or warranties, expressed or implied, concerning the accuracy, completeness, reliability or suitability for the use of this information. Nassau County assumes no liability associated with the use or misuse of such information.

Copyright 1993-2014
County of Nassau, New York

Date: 05/11/2015