

**FIREMEN'S TRAINING CENTER
GROUNDWATER REMEDIATION**

DEPARTMENT OF PUBLIC WORKS

Nassau County

Long Island, New York



**Post Termination Monitoring
Summary**



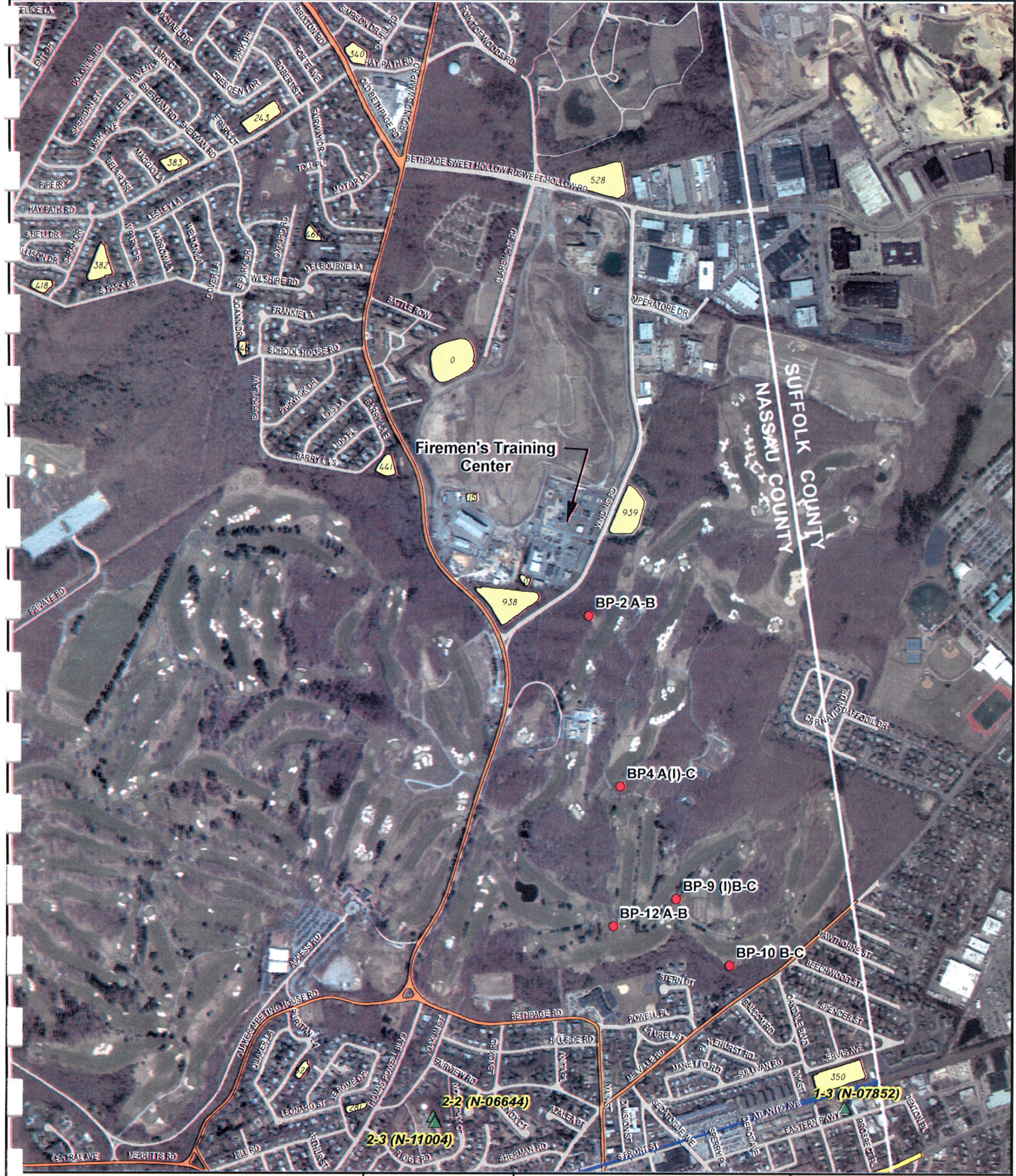
July 2013

RECEIVED

AUG 15 2013

REMEDIAL BUREAU E

PTM – Offsite Sampling Results



Legend

- Village of Farmingdale Public Supply Wells
- Post Termination Monitoring Wells(PTM)
- Railroad
- Recharge Basins



Site Location

**FTC - POST
TERMINATION
MONITORING WELL
LOCATIONS**

Prepared By: NCDPW - Water/Wastewater
Regulatory Unit



0 162.5325 650 975 1,300
Feet

Nassau County



Geographic Information System

This product is for informational purposes and may not have been prepared for or suitable for legal, engineering, or surveying purposes. Nassau County makes no representations or warranties, expressed or implied, concerning the accuracy, completeness, reliability or suitability for the use of this information. Nassau County assumes no liability associated with the use or misuse of such information.

Copyright 1993-2013
County of Nassau, New York

Date: 7/02/2013

FTC- POST TERMINATION MONITORING RESULTS 2011 - 2013 (offsite)

	BP-2B										BP-4B										BP-4C													
	7/6/11	10/18/11	4/2/12	7/11/12	10/4/12	2/1/13	4/4/13	7/8/13	6/24/11	10/14/11	1/15/12	3/26/12	7/10/12	10/2/12	1/17/13	4/3/13	7/2/13	6/28/11	10/14/11	1/5/12	3/26/12	7/10/12	10/1/12	1/17/13	4/2/13	7/2/13	6/28/11	10/14/11	1/5/12	3/26/12	7/10/12	10/1/12	1/17/13	4/2/13
FTC Cleanup Criteria	ppb										ppb										ppb													
VOLATILE ORGANICS COMPOUNDS																																		
1,1,1-Trichloroethane	BDL																																	
1,1-Dichloroethane	BDL																																	
1,1,2-Dichloroethane	BDL																																	
Ethyl Benzene	BDL																																	
m,p-Xylene	BDL																																	
Methylene Chloride	BDL																																	
o-Xylene	BDL																																	
t-1,2-Dichloroethane	BDL																																	
Tetrachloroethene	BDL																																	
Toluene	BDL																																	
Trichloroethene	BDL																																	
Acetone	BDL																																	
Methyl Ethyl Ketone	BDL																																	
2-n hexanone	BDL																																	
1-methyl Chloride	BDL																																	
SEMI-VOLATILE ORGANIC COMPOUNDS																																		
phenanthrene	BDL																																	
fluorene	BDL																																	
naphthalene	BDL																																	
di-n-octyl phthalate	BDL																																	
2-methylnaphthalene	BDL																																	
Total	BDL																																	

NA - not analyzed
 J - Indicates an estimated value. The Conc. reported was between the MDL and PQL.
 B - The analyte was found in the method blank as well as the sample.

NOTE: VOC and Semi Vol. results = ug/l
 inorganic = mg/l

LABORATORY: Inorganic, VOC & SEMI-VOL. Environmental Quality Services, Farmingdale, N.Y.

FTC - POST TERMINATION MONITORING RESULTS 2011 - 2013 (offsite)

VOLATILE ORGANICS COMPOUNDS	BP-9B*												BP-9C												BP-12B											
	FTC Cleanup Criteria				DATE SAMPLED				FTC Cleanup Criteria				DATE SAMPLED				FTC Cleanup Criteria				DATE SAMPLED															
	PPB	7/5/11	10/18/11	1/9/12	3/30/12	7/11/12	10/9/12	1/17/13	4/4/13	7/8/13	5.0	7/5/11	10/17/11	1/9/12	3/30/12	7/11/12	10/15/12	1/31/13	4/8/13	7/9/13	5.0	7/5/11	10/17/11	1/5/12	3/29/12	7/31/12	10/9/12	1/18/13	4/21/13	7/8/13						
1,1,1-Trichloroethane	BDL	BDL	BDL	BDL	BDL	BDL	BDL	BDL	BDL	BDL	5.0	BDL	BDL	BDL	BDL	BDL	BDL	BDL	BDL	BDL	5.0	BDL	BDL	BDL	BDL	BDL	BDL	BDL	BDL	BDL						
1,1-Dichloroethane	5.0	1.5J	1.64J	BDL	BDL	BDL	BDL	BDL	BDL	BDL	5.0	BDL	BDL	BDL	BDL	BDL	BDL	BDL	BDL	BDL	5.0	BDL	BDL	BDL	BDL	BDL	BDL	BDL	BDL							
Benzene	0.7	BDL	BDL	BDL	BDL	BDL	BDL	BDL	BDL	BDL	0.7	BDL	BDL	BDL	BDL	BDL	BDL	BDL	BDL	BDL	0.7	BDL	BDL	BDL	BDL	BDL	BDL	BDL	BDL							
Ethyl Benzene	5.0	BDL	BDL	BDL	BDL	BDL	BDL	BDL	BDL	BDL	5.0	BDL	BDL	BDL	BDL	BDL	BDL	BDL	BDL	BDL	5.0	BDL	BDL	BDL	BDL	BDL	BDL	BDL	BDL							
m,p-Xylene	5.0	BDL	BDL	BDL	BDL	BDL	BDL	BDL	BDL	BDL	5.0	BDL	BDL	BDL	BDL	BDL	BDL	BDL	BDL	BDL	5.0	BDL	BDL	BDL	BDL	BDL	BDL	BDL	BDL							
Methylene Chloride	5.0	BDL	BDL	BDL	BDL	BDL	BDL	BDL	BDL	BDL	5.0	BDL	BDL	BDL	BDL	BDL	BDL	BDL	BDL	BDL	5.0	BDL	BDL	BDL	BDL	BDL	BDL	BDL	BDL							
o-Xylene	5.0	BDL	BDL	BDL	BDL	BDL	BDL	BDL	BDL	BDL	5.0	BDL	BDL	BDL	BDL	BDL	BDL	BDL	BDL	BDL	5.0	BDL	BDL	BDL	BDL	BDL	BDL	BDL	BDL							
t-1,2-Dichloroethene	5.0	1.2J	1.02J	BDL	BDL	BDL	BDL	BDL	BDL	BDL	5.0	BDL	BDL	BDL	BDL	BDL	BDL	BDL	BDL	BDL	5.0	BDL	BDL	BDL	BDL	BDL	BDL	BDL	BDL							
Tetrachloroethene	5.0	BDL	BDL	BDL	BDL	BDL	BDL	BDL	BDL	BDL	5.0	BDL	BDL	BDL	BDL	BDL	BDL	BDL	BDL	BDL	5.0	BDL	BDL	BDL	BDL	BDL	BDL	BDL	BDL							
Toluene	5.0	.9J	BDL	BDL	BDL	BDL	BDL	BDL	BDL	BDL	5.0	BDL	BDL	BDL	BDL	BDL	BDL	BDL	BDL	BDL	5.0	BDL	BDL	BDL	BDL	BDL	BDL	BDL	BDL							
Trichloroethene	5.0	BDL	BDL	BDL	BDL	BDL	BDL	BDL	BDL	BDL	5.0	BDL	BDL	BDL	BDL	BDL	BDL	BDL	BDL	BDL	5.0	BDL	BDL	BDL	BDL	BDL	BDL	BDL	BDL							
Acetone	50.0	BDL	BDL	BDL	BDL	BDL	BDL	BDL	BDL	BDL	50.0	BDL	BDL	BDL	BDL	BDL	BDL	BDL	BDL	BDL	50.0	BDL	BDL	BDL	BDL	BDL	BDL	BDL	BDL							
Methyl Ethyl Ketone	50.0	BDL	BDL	BDL	BDL	BDL	BDL	BDL	BDL	BDL	50.0	BDL	BDL	BDL	BDL	BDL	BDL	BDL	BDL	BDL	50.0	BDL	BDL	BDL	BDL	BDL	BDL	BDL	BDL							
2 - hexanone	50.0	BDL	BDL	BDL	BDL	BDL	BDL	BDL	BDL	BDL	50.0	BDL	BDL	BDL	BDL	BDL	BDL	BDL	BDL	BDL	50.0	BDL	BDL	BDL	BDL	BDL	BDL	BDL	BDL							
Vinyl Chloride	2.0	.9J	BDL	BDL	BDL	BDL	BDL	BDL	BDL	BDL	2.0	BDL	BDL	BDL	BDL	BDL	BDL	BDL	BDL	BDL	2.0	BDL	BDL	BDL	BDL	BDL	BDL	BDL	BDL							
Total	50.0	0.0	0.0	0.0	0.0	0.0	0.0	0.0	0.0	0.0	50.0	0.0	0.0	0.0	0.0	0.0	0.0	0.0	0.0	50.0	0.0	0.0	0.0	0.0	0.0	0.0	0.0	0.0	0.0							
SEMI-VOLATILE ORGANIC COMPOUNDS																																				
phenanthrene	50.0	NA	NA	NA	NA	NA	NA	NA	NA	NA	50.0	NA	NA	NA	NA	NA	NA	NA	NA	NA	50.0	NA	NA	NA	NA	NA	NA	NA	NA	NA						
fluorene	50.0	NA	NA	NA	NA	NA	NA	NA	NA	NA	50.0	NA	NA	NA	NA	NA	NA	NA	NA	NA	50.0	NA	NA	NA	NA	NA	NA	NA	NA	NA						
naphthalene	50.0	NA	NA	NA	NA	NA	NA	NA	NA	NA	50.0	NA	NA	NA	NA	NA	NA	NA	NA	NA	50.0	NA	NA	NA	NA	NA	NA	NA	NA	NA						
di-n-octyl phthalate	50.0	NA	NA	NA	NA	NA	NA	NA	NA	NA	50.0	NA	NA	NA	NA	NA	NA	NA	NA	NA	50.0	NA	NA	NA	NA	NA	NA	NA	NA	NA						
2 - methyl naphthalene	50.0	NA	NA	NA	NA	NA	NA	NA	NA	NA	50.0	NA	NA	NA	NA	NA	NA	NA	NA	NA	50.0	NA	NA	NA	NA	NA	NA	NA	NA	NA						
Total	50.0	0.0	0.0	0.0	0.0	0.0	0.0	0.0	0.0	0.0	50.0	0.0	0.0	0.0	0.0	0.0	0.0	0.0	0.0	50.0	0.0	0.0	0.0	0.0	0.0	0.0	0.0	0.0	0.0							

* fifth quarter well

- Compound detected at conc. above cleanup criteria

NA - Not Analyzed

B

J

- Indicates an estimated value. The Conc. reported was between the MDL and PQL.

- The analyte was found in the method blank as well as the sample.

LABORATORY: Inorganic, VOA & SEMI-VOL: Environmental Quality Services, Farmingdale, N.Y.

FTC- POST TERMINATION MONITORING RESULTS 2011 - 2013 (offsite)

VOLATILE ORGANICS COMPOUNDS	BP-10B*													BP-10C*												
	FTC Cleanup Criteria	DATE SAMPLED												FTC Cleanup Criteria	DATE SAMPLED											
	ppb	6/28/11	10/17/11	1/4/12	3/28/12	7/9/12	10/11/12	1/18/13	4/1/13	7/1/13	7/1/13	5.5	6/28/11	10/17/11	1/4/12	3/28/12	7/9/12	10/11/12	1/28/13	4/1/13	7/3/13					
1,1,1-Trichloroethane	5.0	BDL	.96J	1.41J	1.58J	2.18J	3.26J	2.4J	3.61J	5.5	BDL	5.0	BDL	BDL	BDL	BDL	BDL	BDL	BDL	BDL	BDL	BDL				
1,1-Dichloroethane	5.0	2.4J	4.9J	4.51J	4.89J	6.78J	7.8	7.1	11.2	20.8	BDL	5.0	2.6J	3.1J	2.96J	3.22J	3.58J	2.46J	3.34J	3.58J	6.76	BDL				
1,1-Dichloroethene	5.0	BDL	BDL	.97J	BDL	1.15J	1.61J	1.48J	2.56J	4.7J	BDL	5.0	BDL	BDL	BDL	BDL	BDL	BDL	BDL	BDL	BDL	BDL				
Benzene	0.7	BDL	BDL	BDL	BDL	BDL	BDL	BDL	BDL	BDL	BDL	0.7	BDL	BDL	BDL	BDL	BDL	BDL	BDL	BDL	BDL	1.55J				
Ethyl Benzene	5.0	BDL	BDL	BDL	BDL	BDL	BDL	BDL	BDL	BDL	BDL	5.0	BDL	BDL	BDL	BDL	BDL	BDL	BDL	BDL	BDL	BDL				
m,p-Xylene	5.0	BDL	BDL	BDL	BDL	BDL	BDL	BDL	BDL	BDL	BDL	5.0	BDL	BDL	BDL	BDL	BDL	BDL	BDL	BDL	BDL	BDL				
Methylene Chloride	5.0	BDL	BDL	BDL	BDL	BDL	BDL	BDL	BDL	BDL	BDL	5.0	BDL	BDL	BDL	BDL	BDL	BDL	BDL	BDL	BDL	BDL				
o-Xylene	5.0	BDL	BDL	BDL	BDL	BDL	BDL	BDL	BDL	BDL	BDL	5.0	BDL	BDL	BDL	BDL	BDL	BDL	BDL	BDL	BDL	BDL				
t-1,2-Dichloroethene	5.0	BDL	BDL	BDL	BDL	BDL	BDL	BDL	BDL	BDL	BDL	5.0	BDL	BDL	BDL	BDL	BDL	BDL	BDL	BDL	BDL	BDL				
Tetrachloroethene	5.0	BDL	BDL	BDL	BDL	BDL	BDL	BDL	BDL	BDL	BDL	5.0	BDL	BDL	BDL	BDL	BDL	BDL	BDL	BDL	BDL	BDL				
Toluene	5.0	BDL	BDL	BDL	BDL	BDL	BDL	BDL	BDL	BDL	BDL	5.0	BDL	BDL	BDL	BDL	BDL	BDL	BDL	BDL	BDL	BDL				
Trichloroethene	5.0	BDL	BDL	.83J	1.29J	.99J	1.65J	1.55J	2.97J	4.1	BDL	5.0	BDL	BDL	BDL	BDL	BDL	BDL	BDL	BDL	BDL	BDL				
Acetone	50.0	BDL	BDL	BDL	BDL	BDL	BDL	BDL	BDL	BDL	BDL	50.0	BDL	BDL	BDL	BDL	BDL	BDL	BDL	BDL	BDL	BDL				
Methyl Ethyl Ketone	50.0	BDL	BDL	BDL	BDL	BDL	BDL	BDL	BDL	BDL	BDL	50.0	BDL	BDL	BDL	BDL	BDL	BDL	BDL	BDL	BDL	BDL				
2 - hexanone	50.0	BDL	BDL	BDL	BDL	BDL	BDL	BDL	BDL	BDL	BDL	50.0	BDL	BDL	BDL	BDL	BDL	BDL	BDL	BDL	BDL	BDL				
Vinyl Chloride	2.0	BDL	BDL	BDL	BDL	BDL	BDL	BDL	BDL	BDL	BDL	2.0	BDL	BDL	BDL	BDL	BDL	BDL	BDL	BDL	BDL	BDL				
Total	50.0	0.0	0.0	0.0	0.0	0.0	7.8	7.1	11.2	30.4	BDL	50.0	0.0	0.0	0.0	0.0	0.0	0.0	0.0	0.0	0.0	6.8				
SEMI-VOLATILE ORGANIC COMPOUNDS																										
phenanthrene	50.0	NA	NA	NA	NA	NA	NA	NA	NA	NA	NA	50.0	NA	NA	NA	NA	NA	NA	NA	NA	NA	NA				
fluorene	50.0	NA	NA	NA	NA	NA	NA	NA	NA	NA	NA	50.0	NA	NA	NA	NA	NA	NA	NA	NA	NA	NA				
naphthalene	50.0	NA	NA	NA	NA	NA	NA	NA	NA	NA	NA	50.0	NA	NA	NA	NA	NA	NA	NA	NA	NA	NA				
di-n-octyl phthalate	50.0	NA	NA	NA	NA	NA	NA	NA	NA	NA	NA	50.0	NA	NA	NA	NA	NA	NA	NA	NA	NA	NA				
2 - methylnaphthalene	50.0	NA	NA	NA	NA	NA	NA	NA	NA	NA	NA	50.0	NA	NA	NA	NA	NA	NA	NA	NA	NA	NA				
Total																										

BDL - Compound detected at conc. above cleanup criteria

LABORATORY: Inorganic, VOA & SEMI-VOL: Environmental Quality Services, Farmingdale, N.Y.

* fifth quarter well

NA - Not Analyzed

J - Indicates an estimated value. The Conc. reported was between the MDL and PQL.

B - The analyte was found in the method blank as well as the sample.

PTM – Onsite Sampling Results



Extinguisher Area

Former Flammable Liquid Area

Taxpayer Mockup

- Legend**
- Nassau County Recovery Wells
 - FTC Monitoring Wells
 - Recharge Basins



**NASSAU COUNTY
FIREMEN'S TRAINING CENTER
ONSITE POST TERMINATION
MONITORING WELL LOCATIONS**

Prepared By: - NCDPW - Water/Wastewater Engineering Unit

0 25 50 100 150 Feet

Nassau County

Geographic Information System

This product is for informational purposes and may not have been prepared for, or be suitable for legal, engineering, or surveying purposes. Nassau County makes no representation or warranty, expressed or implied, concerning the accuracy, completeness, reliability or suitability for the use of this information. Nassau County assumes no liability associated with the use of misuse of such information.

Copyright 1993-2013
County of Nassau, New York

Date: 7/23/2013

FTC - POST TERMINATION MONITORING RESULTS 2011-2013 (onsite)

VOLATILE ORGANICS COMPOUNDS	FTC-W-4A*										FTC-W-4B*										FTC-W-7A										FTC-W-7B*									
	FTC Cleanup Criteria (ppb)		DATE SAMPLED		DATE SAMPLED		DATE SAMPLED		DATE SAMPLED		DATE SAMPLED		DATE SAMPLED		DATE SAMPLED		DATE SAMPLED		DATE SAMPLED		DATE SAMPLED		DATE SAMPLED		DATE SAMPLED		DATE SAMPLED		DATE SAMPLED											
	5	BDL	6/24/11	7/5/12	10/2/12	1/29/13	3/28/13	7/2/13	6/24/11	7/5/12	10/2/12	1/29/13	3/28/13	7/2/13	6/23/11	7/2/12	10/10/12	1/29/13	4/5/13	7/10/13	6/22/11	7/2/12	10/10/12	1/31/13	4/5/13	7/10/13	6/22/11	7/2/12	10/10/12	1/31/13	4/5/13	7/10/13								
1,1,1-Trichloroethane	5	BDL	BDL	BDL	BDL	BDL	BDL	BDL	BDL	BDL	BDL	BDL	BDL	BDL	BDL	BDL	BDL	BDL	BDL	BDL	BDL	BDL	BDL	BDL	BDL	BDL	BDL	BDL	BDL	BDL	BDL	BDL								
1,1-Dichloroethane	5	BDL	BDL	BDL	BDL	BDL	BDL	BDL	BDL	BDL	BDL	BDL	BDL	BDL	BDL	BDL	BDL	BDL	BDL	BDL	BDL	BDL	BDL	BDL	BDL	BDL	BDL	BDL	BDL	BDL	BDL	BDL								
1,1-Dichloroethene	5	BDL	BDL	BDL	BDL	BDL	BDL	BDL	BDL	BDL	BDL	BDL	BDL	BDL	BDL	BDL	BDL	BDL	BDL	BDL	BDL	BDL	BDL	BDL	BDL	BDL	BDL	BDL	BDL	BDL	BDL	BDL								
2-Butanone (MEK)	50	BDL	BDL	BDL	BDL	BDL	BDL	BDL	BDL	BDL	BDL	BDL	BDL	BDL	BDL	BDL	BDL	BDL	BDL	BDL	BDL	BDL	BDL	BDL	BDL	BDL	BDL	BDL	BDL	BDL	BDL	BDL								
2-Hexanone	50	BDL	BDL	BDL	BDL	BDL	BDL	BDL	BDL	BDL	BDL	BDL	BDL	BDL	BDL	BDL	BDL	BDL	BDL	BDL	BDL	BDL	BDL	BDL	BDL	BDL	BDL	BDL	BDL	BDL	BDL	BDL								
Acetone	0.7	BDL	BDL	BDL	BDL	BDL	BDL	BDL	BDL	BDL	BDL	BDL	BDL	BDL	BDL	BDL	BDL	BDL	BDL	BDL	BDL	BDL	BDL	BDL	BDL	BDL	BDL	BDL	BDL	BDL	BDL	BDL								
Benzene	50	BDL	BDL	BDL	BDL	BDL	BDL	BDL	BDL	BDL	BDL	BDL	BDL	BDL	BDL	BDL	BDL	BDL	BDL	BDL	BDL	BDL	BDL	BDL	BDL	BDL	BDL	BDL	BDL	BDL	BDL	BDL								
Carbon Disulfide	5	BDL	BDL	BDL	BDL	BDL	BDL	BDL	BDL	BDL	BDL	BDL	BDL	BDL	BDL	BDL	BDL	BDL	BDL	BDL	BDL	BDL	BDL	BDL	BDL	BDL	BDL	BDL	BDL	BDL	BDL	BDL								
Ethyl Benzene	5	BDL	BDL	BDL	BDL	BDL	BDL	BDL	BDL	BDL	BDL	BDL	BDL	BDL	BDL	BDL	BDL	BDL	BDL	BDL	BDL	BDL	BDL	BDL	BDL	BDL	BDL	BDL	BDL	BDL	BDL	BDL								
m,p-Xylene	5	BDL	BDL	BDL	BDL	BDL	BDL	BDL	BDL	BDL	BDL	BDL	BDL	BDL	BDL	BDL	BDL	BDL	BDL	BDL	BDL	BDL	BDL	BDL	BDL	BDL	BDL	BDL	BDL	BDL	BDL	BDL								
Methylene Chloride	5	BDL	BDL	BDL	BDL	BDL	BDL	BDL	BDL	BDL	BDL	BDL	BDL	BDL	BDL	BDL	BDL	BDL	BDL	BDL	BDL	BDL	BDL	BDL	BDL	BDL	BDL	BDL	BDL	BDL	BDL	BDL								
Tetrachloroethene	5	BDL	BDL	BDL	BDL	BDL	BDL	BDL	BDL	BDL	BDL	BDL	BDL	BDL	BDL	BDL	BDL	BDL	BDL	BDL	BDL	BDL	BDL	BDL	BDL	BDL	BDL	BDL	BDL	BDL	BDL	BDL								
Toluene	5	BDL	BDL	BDL	BDL	BDL	BDL	BDL	BDL	BDL	BDL	BDL	BDL	BDL	BDL	BDL	BDL	BDL	BDL	BDL	BDL	BDL	BDL	BDL	BDL	BDL	BDL	BDL	BDL	BDL	BDL	BDL								
1,1,2-Dichloroethene	5	BDL	BDL	BDL	BDL	BDL	BDL	BDL	BDL	BDL	BDL	BDL	BDL	BDL	BDL	BDL	BDL	BDL	BDL	BDL	BDL	BDL	BDL	BDL	BDL	BDL	BDL	BDL	BDL	BDL	BDL	BDL								
Trichloroethene	5	BDL	BDL	BDL	BDL	BDL	BDL	BDL	BDL	BDL	BDL	BDL	BDL	BDL	BDL	BDL	BDL	BDL	BDL	BDL	BDL	BDL	BDL	BDL	BDL	BDL	BDL	BDL	BDL	BDL	BDL	BDL								
Vinyl Chloride	2	BDL	BDL	BDL	BDL	BDL	BDL	BDL	BDL	BDL	BDL	BDL	BDL	BDL	BDL	BDL	BDL	BDL	BDL	BDL	BDL	BDL	BDL	BDL	BDL	BDL	BDL	BDL	BDL	BDL	BDL	BDL								
Total	50.0	0.0	0.0	0.0	0.0	0.0	0.0	0.0	0.0	0.0	0.0	0.0	0.0	0.0	0.0	0.0	0.0	0.0	0.0	0.0	0.0	0.0	0.0	0.0	0.0	0.0	0.0	0.0	0.0	0.0	0.0	0.0								
SEMI-VOLATILE ORGANIC COMPOUNDS																																								
2-methylnaphthalene	50	BDL	BDL	BDL	BDL	BDL	BDL	BDL	BDL	BDL	BDL	BDL	BDL	BDL	BDL	BDL	BDL	BDL	BDL	BDL	BDL	BDL	BDL	BDL	BDL	BDL	BDL	BDL	BDL	BDL	BDL	BDL	BDL							
di-n-octyl phthalate	50	BDL	BDL	BDL	BDL	BDL	BDL	BDL	BDL	BDL	BDL	BDL	BDL	BDL	BDL	BDL	BDL	BDL	BDL	BDL	BDL	BDL	BDL	BDL	BDL	BDL	BDL	BDL	BDL	BDL	BDL	BDL	BDL	BDL						
Flourene	50	BDL	BDL	BDL	BDL	BDL	BDL	BDL	BDL	BDL	BDL	BDL	BDL	BDL	BDL	BDL	BDL	BDL	BDL	BDL	BDL	BDL	BDL	BDL	BDL	BDL	BDL	BDL	BDL	BDL	BDL	BDL	BDL	BDL						
Naphthalene	50	BDL	BDL	BDL	BDL	BDL	BDL	BDL	BDL	BDL	BDL	BDL	BDL	BDL	BDL	BDL	BDL	BDL	BDL	BDL	BDL	BDL	BDL	BDL	BDL	BDL	BDL	BDL	BDL	BDL	BDL	BDL	BDL	BDL						
Phenanthrene	50	BDL	BDL	BDL	BDL	BDL	BDL	BDL	BDL	BDL	BDL	BDL	BDL	BDL	BDL	BDL	BDL	BDL	BDL	BDL	BDL	BDL	BDL	BDL	BDL	BDL	BDL	BDL	BDL	BDL	BDL	BDL	BDL	BDL						

LABORATORIES: VOA & SEMI-VOL: Environmental Quality Services, Farmingdale, N.Y. J. - estimated conc.
 *5th Quarter Well B - found in blank
 - compound detected at conc. above cleanup criteria VOC and Semi Vol. results = ug/l

FTC - POST TERMINATION MONITORING RESULTS 2011-2013 (onsite)

	FTC-W-7C						FTC-W-9A*						FTC-W-9B						FTC-W-14A							
	FTC Cleanup Criteria		DATE SAMPLED		DATE SAMPLED		DATE SAMPLED		DATE SAMPLED		DATE SAMPLED		DATE SAMPLED		DATE SAMPLED		DATE SAMPLED		DATE SAMPLED		DATE SAMPLED					
	(ppb)		6/23/11	7/9/12	10/10/12	1/31/13	4/9/13	7/10/13	6/23/11	7/2/12	10/1/12	1/18/13	4/2/13	7/1/13	6/23/11	7/2/12	10/1/12	1/29/13	4/1/13	7/1/13	6/27/11	7/6/12	10/15/12	1/31/13	4/9/13	7/9/13
VOLATILE ORGANICS COMPOUNDS	5		BDL	BDL	BDL	BDL	BDL	BDL	BDL	BDL	BDL	BDL	BDL	BDL	BDL	BDL	BDL	BDL	BDL	BDL	BDL	BDL	BDL	BDL	BDL	BDL
1,1,1-Trichloroethane	5		BDL	BDL	BDL	BDL	BDL	BDL	BDL	BDL	BDL	BDL	BDL	BDL	BDL	BDL	BDL	BDL	BDL	BDL	BDL	BDL	BDL	BDL	BDL	BDL
1,1-Dichloroethane	5		BDL	BDL	BDL	BDL	BDL	BDL	BDL	BDL	BDL	BDL	BDL	BDL	BDL	BDL	BDL	BDL	BDL	BDL	BDL	BDL	BDL	BDL	BDL	BDL
1,1-Dichloroethene	5		BDL	BDL	BDL	BDL	BDL	BDL	BDL	BDL	BDL	BDL	BDL	BDL	BDL	BDL	BDL	BDL	BDL	BDL	BDL	BDL	BDL	BDL	BDL	BDL
2-Butanone (MEK)	50		BDL	BDL	BDL	BDL	BDL	BDL	BDL	BDL	BDL	BDL	BDL	BDL	BDL	BDL	BDL	BDL	BDL	BDL	BDL	BDL	BDL	BDL	BDL	BDL
2-Hexanone	50		BDL	BDL	BDL	BDL	BDL	BDL	BDL	BDL	BDL	BDL	BDL	BDL	BDL	BDL	BDL	BDL	BDL	BDL	BDL	BDL	BDL	BDL	BDL	BDL
Acetone	50		BDL	BDL	BDL	BDL	BDL	BDL	BDL	BDL	BDL	BDL	BDL	BDL	BDL	BDL	BDL	BDL	BDL	BDL	BDL	BDL	BDL	BDL	BDL	BDL
Benzene	0.7		BDL	BDL	BDL	BDL	BDL	BDL	BDL	BDL	BDL	BDL	BDL	BDL	BDL	BDL	BDL	BDL	BDL	BDL	BDL	BDL	BDL	BDL	BDL	BDL
Carbon Disulfide	50		BDL	BDL	BDL	BDL	BDL	BDL	BDL	BDL	BDL	BDL	BDL	BDL	BDL	BDL	BDL	BDL	BDL	BDL	BDL	BDL	BDL	BDL	BDL	BDL
Ethyl Benzene	5		BDL	BDL	BDL	BDL	BDL	BDL	BDL	BDL	BDL	BDL	BDL	BDL	BDL	BDL	BDL	BDL	BDL	BDL	BDL	BDL	BDL	BDL	BDL	BDL
m,p-Xylene	5		BDL	BDL	BDL	BDL	BDL	BDL	BDL	BDL	BDL	BDL	BDL	BDL	BDL	BDL	BDL	BDL	BDL	BDL	BDL	BDL	BDL	BDL	BDL	BDL
o-Xylene	5		BDL	BDL	BDL	BDL	BDL	BDL	BDL	BDL	BDL	BDL	BDL	BDL	BDL	BDL	BDL	BDL	BDL	BDL	BDL	BDL	BDL	BDL	BDL	BDL
Methylene Chloride	5		BDL	BDL	BDL	BDL	BDL	BDL	BDL	BDL	BDL	BDL	BDL	BDL	BDL	BDL	BDL	BDL	BDL	BDL	BDL	BDL	BDL	BDL	BDL	BDL
Tetrachloroethene	5		BDL	BDL	BDL	BDL	BDL	BDL	BDL	BDL	BDL	BDL	BDL	BDL	BDL	BDL	BDL	BDL	BDL	BDL	BDL	BDL	BDL	BDL	BDL	BDL
Toluene	5		BDL	BDL	BDL	BDL	BDL	BDL	BDL	BDL	BDL	BDL	BDL	BDL	BDL	BDL	BDL	BDL	BDL	BDL	BDL	BDL	BDL	BDL	BDL	BDL
t-1,2-Dichloroethene	5		BDL	BDL	BDL	BDL	BDL	BDL	BDL	BDL	BDL	BDL	BDL	BDL	BDL	BDL	BDL	BDL	BDL	BDL	BDL	BDL	BDL	BDL	BDL	BDL
Trichloroethene	5		BDL	BDL	BDL	BDL	BDL	BDL	BDL	BDL	BDL	BDL	BDL	BDL	BDL	BDL	BDL	BDL	BDL	BDL	BDL	BDL	BDL	BDL	BDL	BDL
Vinyl Chloride	2		BDL	BDL	BDL	BDL	BDL	BDL	BDL	BDL	BDL	BDL	BDL	BDL	BDL	BDL	BDL	BDL	BDL	BDL	BDL	BDL	BDL	BDL	BDL	BDL
Total	50.0		0.0	0.0	0.0	0.0	0.0	0.0	0.0	0.0	0.0	0.0	0.0	0.0	0.0	0.0	0.0	0.0	0.0	0.0	0.0	0.0	0.0	0.0	0.0	0.0
SEMI-VOLATILE ORGANIC COMPOUNDS																										
2-methylnaphthalene	50		BDL	BDL	BDL	BDL	BDL	BDL	BDL	BDL	BDL	BDL	BDL	BDL	BDL	BDL	BDL	BDL	BDL	BDL	BDL	BDL	BDL	BDL	BDL	BDL
di-n-octyl phthalate	50		BDL	BDL	BDL	BDL	BDL	BDL	BDL	BDL	BDL	BDL	BDL	BDL	BDL	BDL	BDL	BDL	BDL	BDL	BDL	BDL	BDL	BDL	BDL	BDL
Flourene	50		BDL	BDL	BDL	BDL	BDL	BDL	BDL	BDL	BDL	BDL	BDL	BDL	BDL	BDL	BDL	BDL	BDL	BDL	BDL	BDL	BDL	BDL	BDL	BDL
Naphthalene	50		BDL	BDL	BDL	BDL	BDL	BDL	BDL	BDL	BDL	BDL	BDL	BDL	BDL	BDL	BDL	BDL	BDL	BDL	BDL	BDL	BDL	BDL	BDL	BDL
Phenanthrene	50		BDL	BDL	BDL	BDL	BDL	BDL	BDL	BDL	BDL	BDL	BDL	BDL	BDL	BDL	BDL	BDL	BDL	BDL	BDL	BDL	BDL	BDL	BDL	BDL

LABORATORIES: VOA & SEMI-VOL: Environmental Quality Services, Farmingdale, N.Y.
 *5th Quarter Well

- compound detected at conc. above cleanup criteria



VOC and Semi Vol results = ugl

FTC - POST TERMINATION MONITORING RESULTS 2011-2013 (onsite)

VOC and Semi Vol. results = ug/l	FTC-W-35																					
	FTC-W-32						FTC-W-33															
	FTC Cleanup Criteria (ppb)	DATE SAMPLED	7/9/13	3/3/11	9/2/11	3/12/12	7/3/12	10/10/12	1/29/13	4/2/13	7/3/13	DATE SAMPLED	3/3/11	9/2/11	3/12/12	7/6/12	10/1/12	1/29/13	4/3/13	7/3/13		
VOLATILE ORGANICS																						
1,1,1-Trichloroethane	5	BDL	BDL	BDL	BDL	BDL	BDL	BDL	BDL	BDL	BDL	BDL	BDL	BDL	BDL	BDL	BDL	BDL	BDL	BDL	BDL	
1,1-Dichloroethane	5	BDL	BDL	BDL	BDL	BDL	BDL	BDL	BDL	BDL	BDL	BDL	BDL	BDL	BDL	BDL	BDL	BDL	BDL	BDL	BDL	
1,1-Dichloroethene	5	BDL	BDL	BDL	BDL	BDL	BDL	BDL	BDL	BDL	BDL	BDL	BDL	BDL	BDL	BDL	BDL	BDL	BDL	BDL	BDL	
2-Butanone (MEK)	50	BDL	BDL	BDL	BDL	BDL	BDL	BDL	BDL	BDL	BDL	BDL	BDL	BDL	BDL	BDL	BDL	BDL	BDL	BDL	BDL	
2-Hexanone	50	BDL	BDL	BDL	BDL	BDL	BDL	BDL	BDL	BDL	BDL	BDL	BDL	BDL	BDL	BDL	BDL	BDL	BDL	BDL	BDL	
Acetone	50	BDL	BDL	BDL	BDL	BDL	BDL	BDL	BDL	BDL	BDL	BDL	BDL	BDL	BDL	BDL	BDL	BDL	BDL	BDL	BDL	
Benzene	0.7	BDL	BDL	BDL	BDL	BDL	BDL	BDL	BDL	BDL	BDL	BDL	BDL	BDL	BDL	BDL	BDL	BDL	BDL	BDL	BDL	
Carbon Disulfide	50	BDL	BDL	BDL	BDL	BDL	BDL	BDL	BDL	BDL	BDL	BDL	BDL	BDL	BDL	BDL	BDL	BDL	BDL	BDL	BDL	
Ethyl Benzene	5	BDL	BDL	BDL	BDL	BDL	BDL	BDL	BDL	BDL	BDL	BDL	BDL	BDL	BDL	BDL	BDL	BDL	BDL	BDL	BDL	
m,p-Xylene	5	BDL	BDL	BDL	BDL	BDL	BDL	BDL	BDL	BDL	BDL	BDL	BDL	BDL	BDL	BDL	BDL	BDL	BDL	BDL	BDL	
o-Xylene	5	BDL	BDL	BDL	BDL	BDL	BDL	BDL	BDL	BDL	BDL	BDL	BDL	BDL	BDL	BDL	BDL	BDL	BDL	BDL	BDL	
Methylene Chloride	5	BDL	BDL	BDL	BDL	BDL	BDL	BDL	BDL	BDL	BDL	BDL	BDL	BDL	BDL	BDL	BDL	BDL	BDL	BDL	BDL	
Tetrachloroethene	5	BDL	BDL	BDL	BDL	BDL	BDL	BDL	BDL	BDL	BDL	BDL	BDL	BDL	BDL	BDL	BDL	BDL	BDL	BDL	BDL	
Toluene	5	BDL	BDL	BDL	BDL	BDL	BDL	BDL	BDL	BDL	BDL	BDL	BDL	BDL	BDL	BDL	BDL	BDL	BDL	BDL	BDL	
t-1,2-Dichloroethene	5	BDL	BDL	BDL	BDL	BDL	BDL	BDL	BDL	BDL	BDL	BDL	BDL	BDL	BDL	BDL	BDL	BDL	BDL	BDL	BDL	
Trichloroethene	5	BDL	BDL	BDL	BDL	BDL	BDL	BDL	BDL	BDL	BDL	BDL	BDL	BDL	BDL	BDL	BDL	BDL	BDL	BDL	BDL	
Vinyl Chloride	2	BDL	BDL	BDL	BDL	BDL	BDL	BDL	BDL	BDL	BDL	BDL	BDL	BDL	BDL	BDL	BDL	BDL	BDL	BDL	BDL	
Total	50.0	0.0	0.0	0.0	0.0	0.0	0.0	0.0	0.0	0.0	0.0	0.0	0.0	0.0	0.0	0.0	0.0	0.0	0.0	0.0	0.0	
SEMI-VOLATILE ORGANIC COMPOUNDS																						
2-methylnaphthalene	50	BDL	BDL	BDL	BDL	BDL	BDL	BDL	BDL	BDL	BDL	BDL	BDL	BDL	BDL	BDL	BDL	BDL	BDL	BDL	BDL	
di-n-octyl phthalate	50	BDL	BDL	BDL	BDL	BDL	BDL	BDL	BDL	BDL	BDL	BDL	BDL	BDL	BDL	BDL	BDL	BDL	BDL	BDL	BDL	
Flourene	50	BDL	BDL	BDL	BDL	BDL	BDL	BDL	BDL	BDL	BDL	BDL	BDL	BDL	BDL	BDL	BDL	BDL	BDL	BDL	BDL	
Naphthalene	50	BDL	BDL	BDL	BDL	BDL	BDL	BDL	BDL	BDL	BDL	BDL	BDL	BDL	BDL	BDL	BDL	BDL	BDL	BDL	BDL	
Phenanthrene	50	BDL	BDL	BDL	BDL	BDL	BDL	BDL	BDL	BDL	BDL	BDL	BDL	BDL	BDL	BDL	BDL	BDL	BDL	BDL	BDL	

LABORATORIES: VOA & SEMI-VOL: Environmental Quality Services, Farmingdale, N.Y.
 *5th Quarter Well

NA- not analyzed
 B - found in laboratory blank
 - compound detected at conc. **above** cleanup criteria

J - detected below quantitation limits