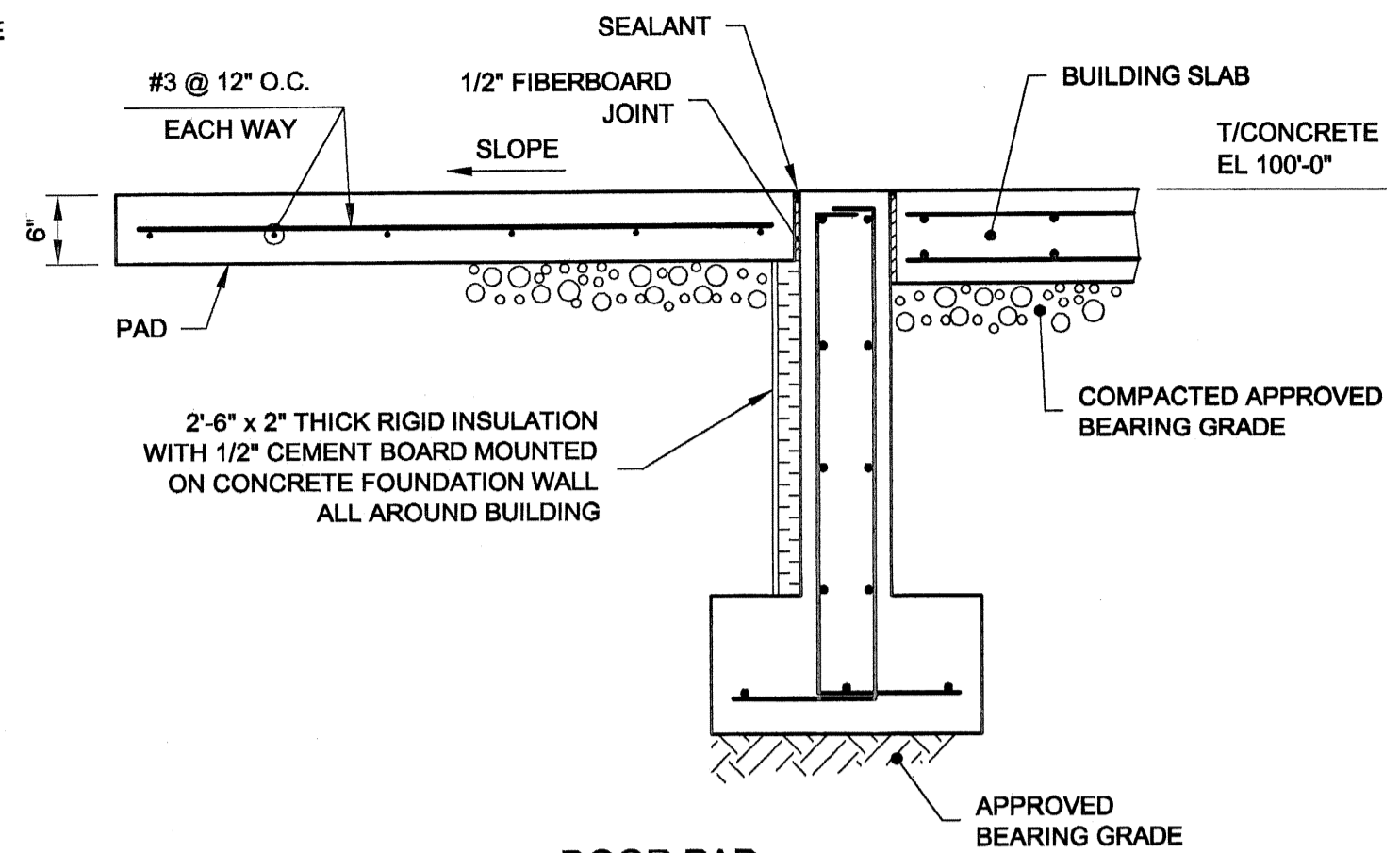
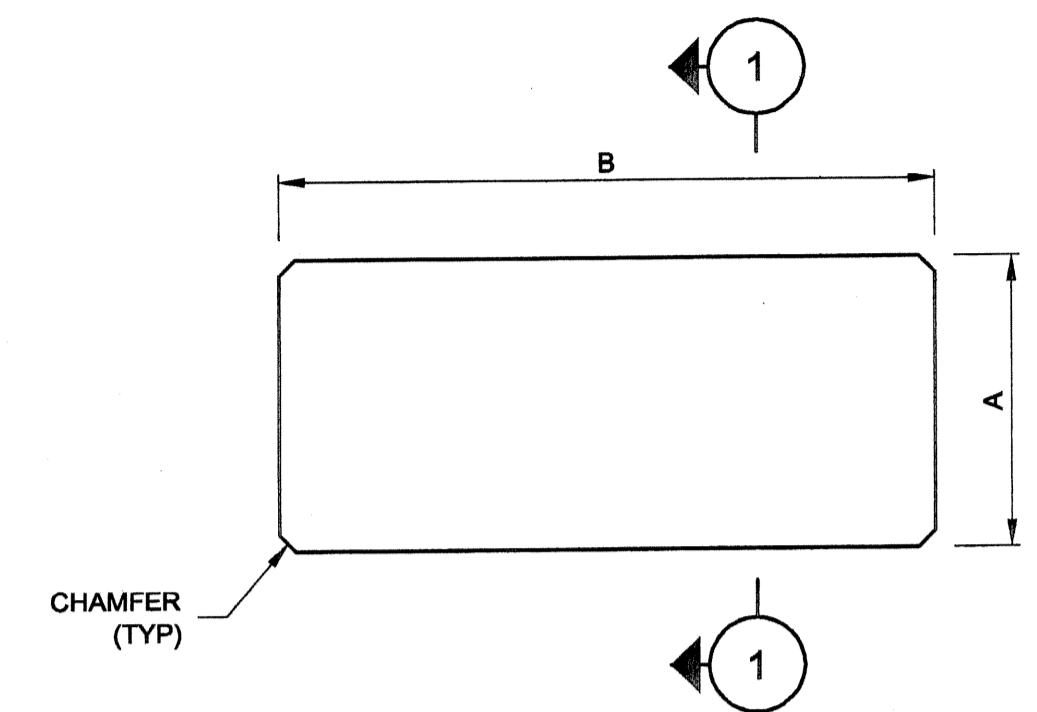


**PIPE FLOOR SLEEVE**  
NTS

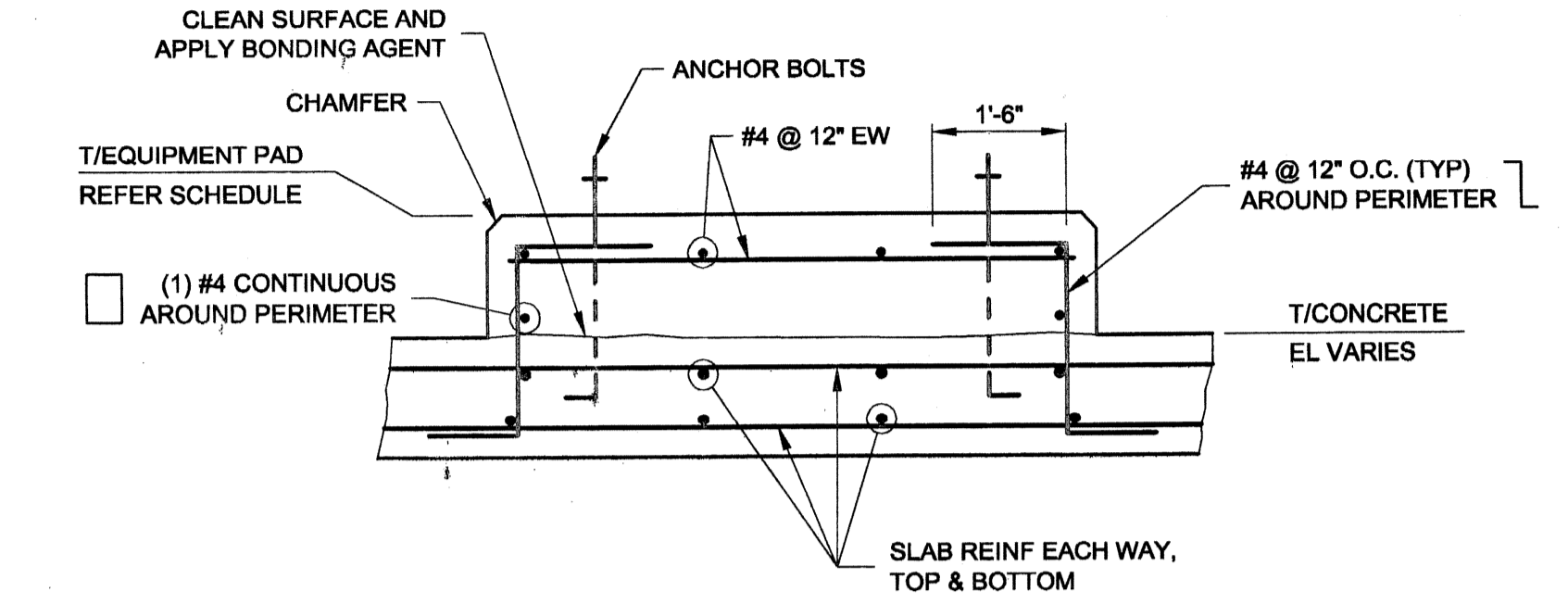


**DOOR PAD**  
3/4"=1'-0"

EQUIPMENT PAD SCHEDULE													
EQUIP No	DESCRIPTION	TYPE	A	B	C	D	E	F	G	H	T/PAD EL	ANCHOR BOLTS	REMARKS
-	AIR COMPRESSOR	-	4'-0"	8'-9"	-	-	-	-	-	-	100'-8"	HILTI	-
-	SUPPLEMENT BLENDING UNIT	-	2'-0"	3'-4"	-	-	-	-	-	-	100'-8"	HILTI	-



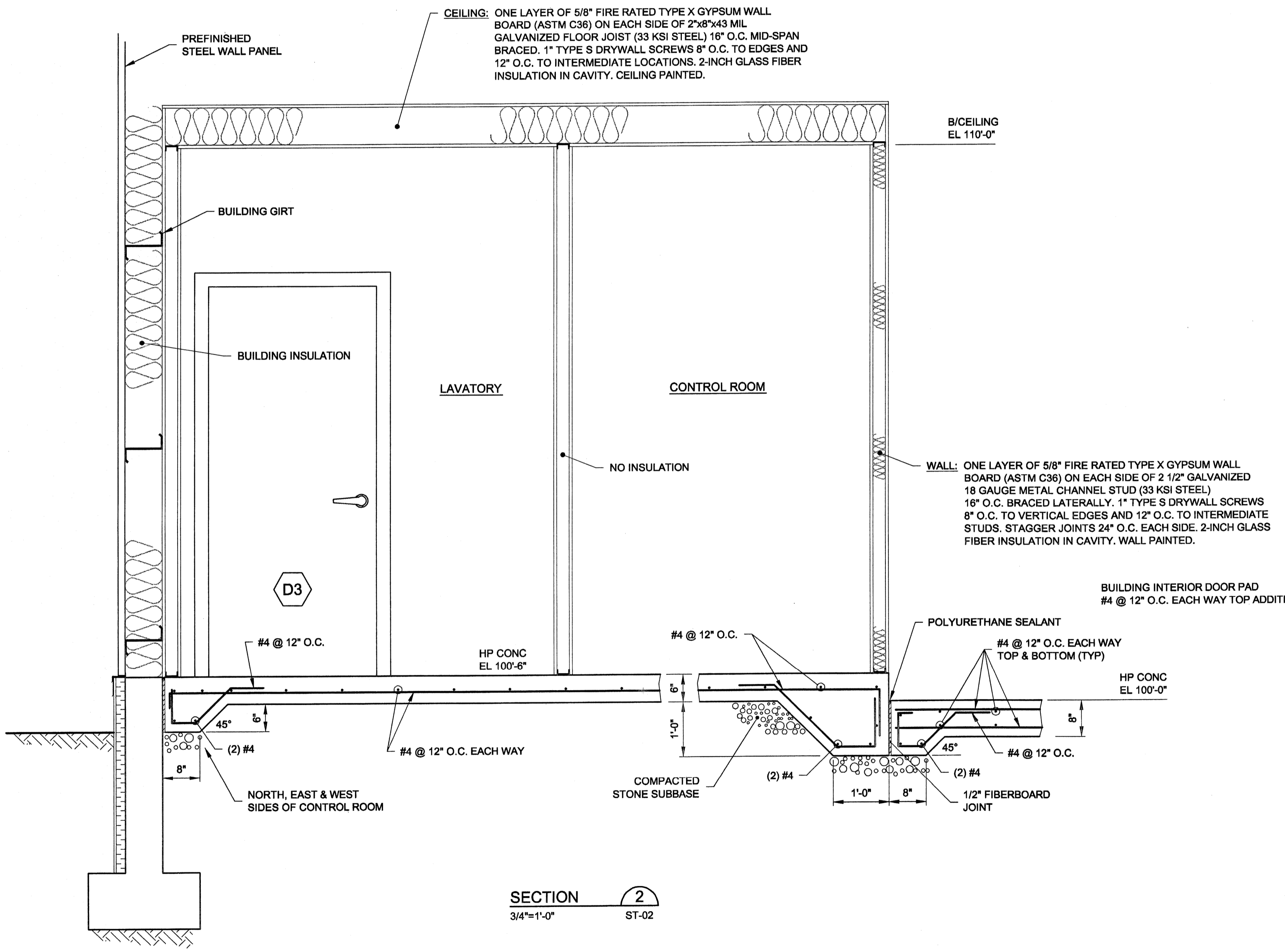
**EQUIPMENT PAD**  
(FOR ORIENTATION REFER PLAN)



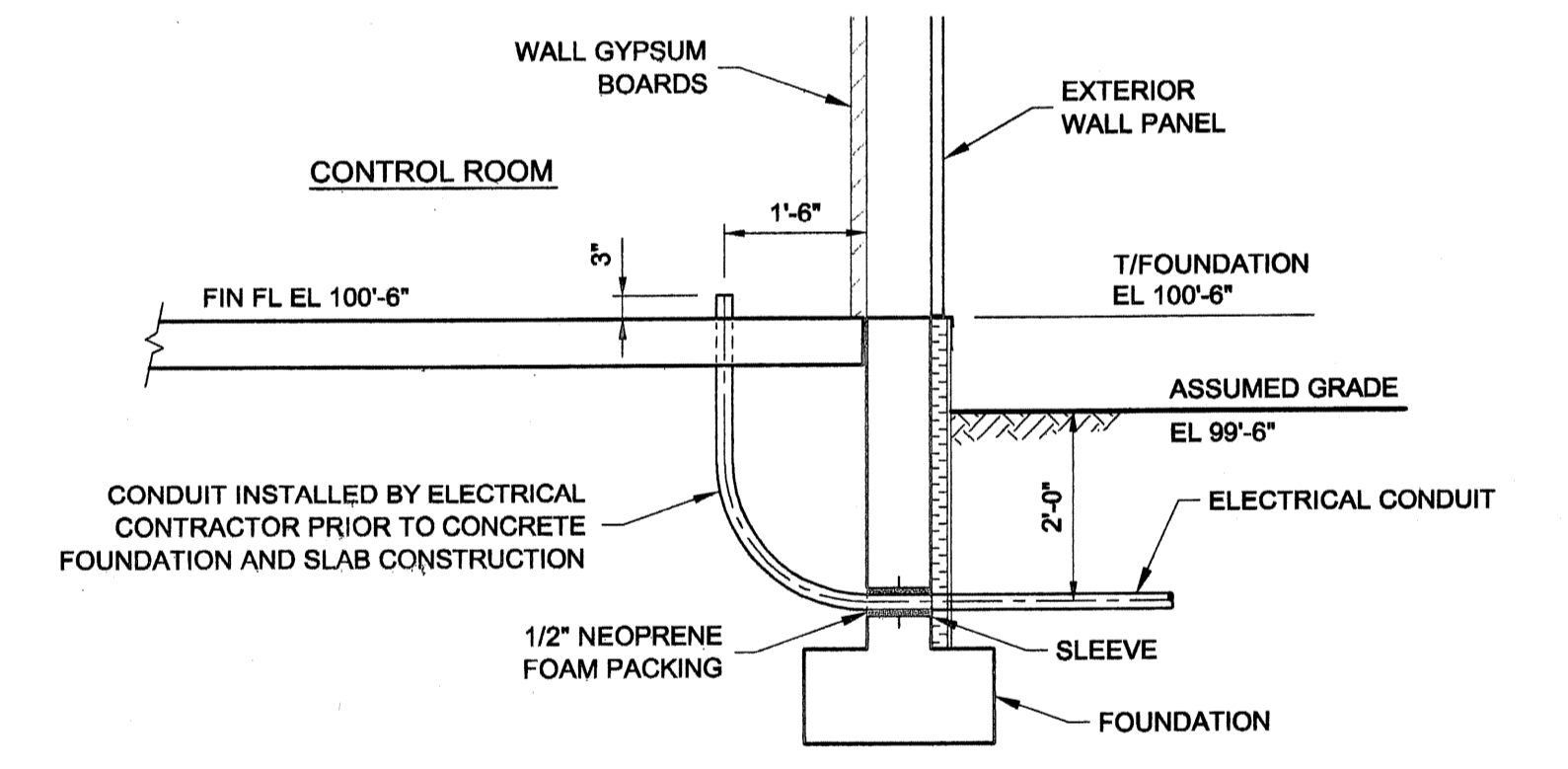
**SECTION 1**  
NTS

**NOTES**

- HILTI ANCHOR BOLTS SHALL CONSIST OF HVA ANCHORING SYSTEM (HVA ADHESIVE AND HAS STAINLESS STEEL ROD) WITH SPECIFIED BOLT DIAMETER AND MINIMUM CONCRETE EMBEDMENT.
- HILTI ANCHORS SHALL BE SUPPLIED AND INSTALLED BY MECHANICAL CONTRACTOR.
- LAYOUT, SIZE AND NUMBER OF ANCHORS SHALL BE AS PER MECHANICAL REQUIREMENTS.



**SECTION 2**  
3/4"=1'-0" ST-02



**ELECTRICAL CONDUIT SLEEVE**  
1/2" = 1'-0"

DATE PRINTED  
05/25/05

**100% REVIEW DRAWINGS**  
NOT FOR CONSTRUCTION

SCALE VERIFICATION: THIS BAR MEASURES 1" ON ORIGINAL. ADJUST SCALE ACCORDINGLY.

No	Revision	Date	Initial

Approved



WARNING: ALTERING THIS DOCUMENT IS IN VIOLATION OF THE NEW YORK STATE EDUCATION LAW EXCEPTING AS PROVIDED IN SECTION 7209, PART 2 OF THE LAW.

HOOKER/RUCO SITE  
HICKSVILLE, NEW YORK

BIOSPARGE TREATMENT SYSTEM

CONTROL BUILDING  
MISCELLANEOUS DETAILS



**CRA Infrastructure & Engineering, Inc.**

Source Reference:		Date:	
		SEPTEMBER 2003	
Project Manager:	Reviewed By:	Designed By:	Drawn By:
JK	JGRW	SKM	ZM
Scale:	Project No:	Report No:	Drawing No:
AS NOTED	06883-10	045	ST-07