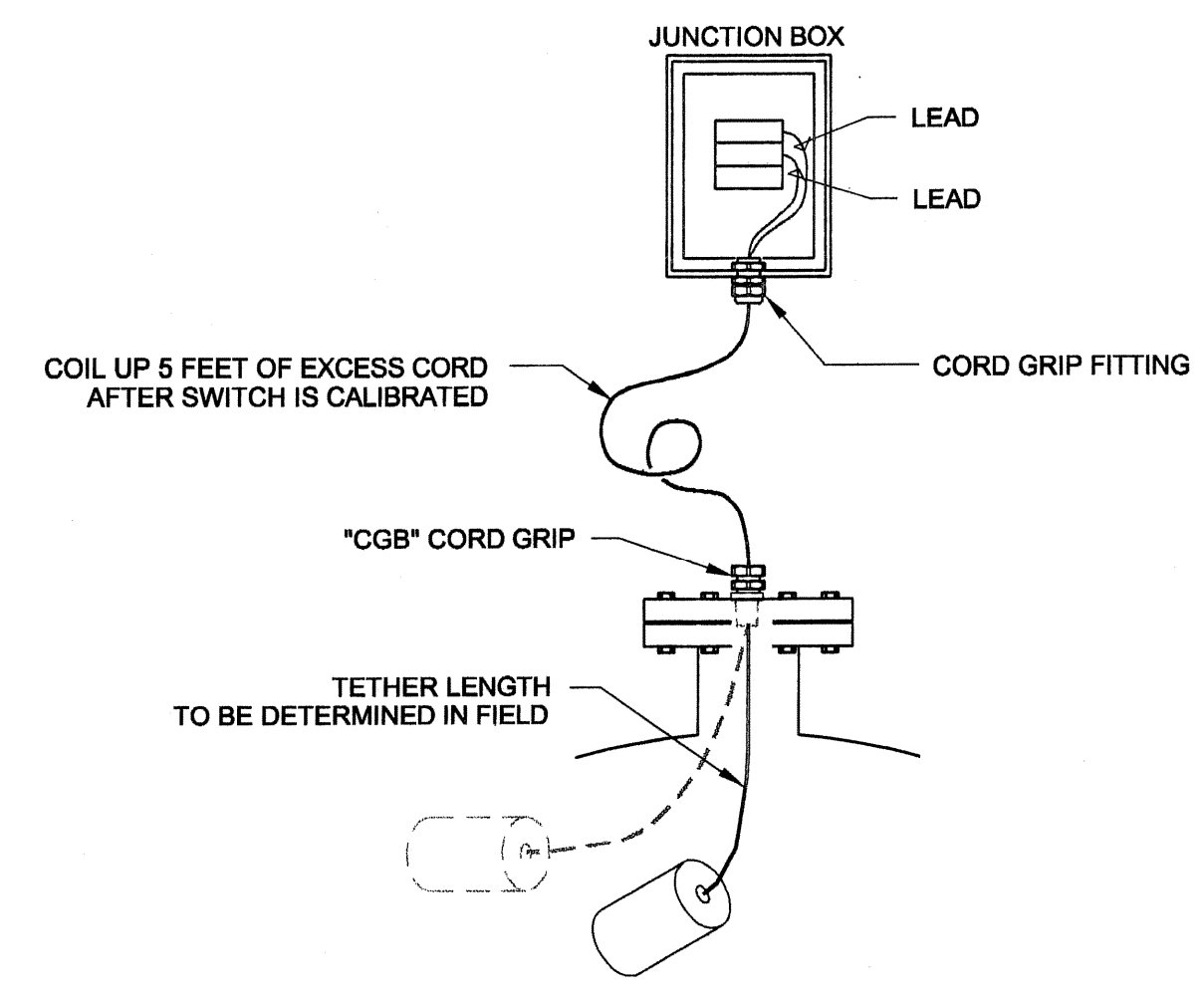
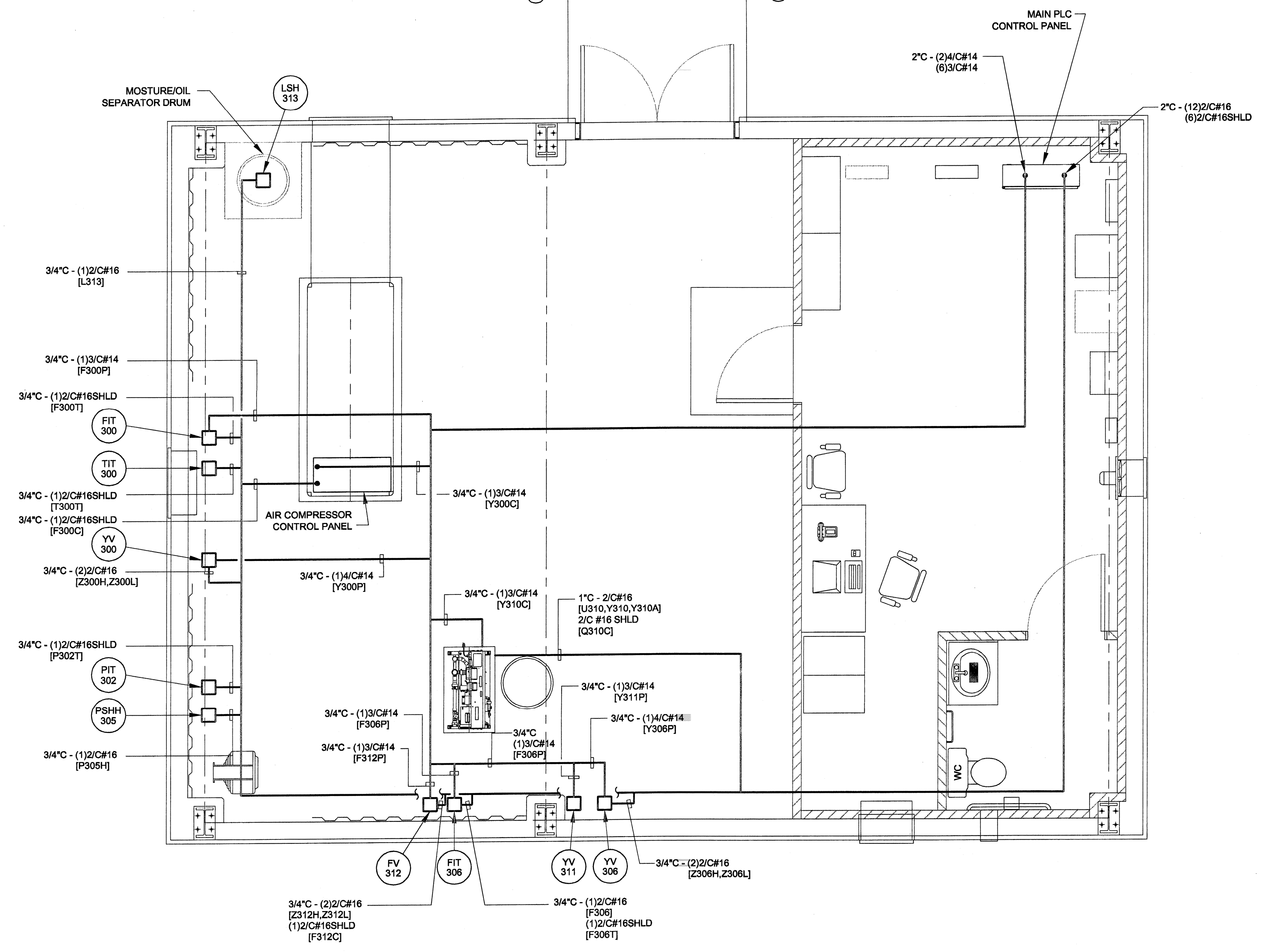


DETAIL A  
CONDUIT TO INSTRUMENT  
N.T.S.



DETAIL B  
LEVEL SWITCH MOUNTING  
N.T.S.



- GENERAL NOTES**
1. ALL CONDUIT TO BE RIGID (RGS), EXCEPT AS NOTED. MINIMUM CONDUIT SIZE TO BE 3/4".
  2. CONDUIT TO BE SUPPORTED EVERY 10'-0" MINIMUM (RGS) AND SHALL BE INSTALLED IN A MANNER SUCH THAT THEY DO NOT CONSTITUTE A TRIPPING HAZARD OR INFRINGE UPON THE 8'-0" MINIMUM HEAD CLEARANCE.
  3. ALL WALL-THRU CONDUIT PENETRATIONS TO BE WEATHER SEALED WITH APPROVED SILICONE SEALER.
  4. ALL WIRE SHALL BE TAGGED WITH APPROPRIATE CIRCUIT NUMBERS AT BOTH TERMINAL ENDS.
  5. ALL CONDUIT AND WIRE SHOWN IS DIAGRAMMATIC, E.C. TO RUN CONDUIT AND WIRE TO ALL DEVICES AS REQUIRED. CONDUIT AND WIRE TO BE SIZED IN ACCORDANCE WITH NEC.

DATE PRINTED  
5/26/05

100% REVIEW DRAWINGS  
NOT FOR CONSTRUCTION

SCALE VERIFICATION: THIS BAR MEASURES 1" ON ORIGINAL. ADJUST SCALE ACCORDINGLY.

No	Revision	Date	Initial

Approved

DME  
5/26/05

HOOKER/RUCO SITE  
HICKSVILLE, NEW YORK

BIOSPARGE TREATMENT SYSTEM

CONTROL BUILDING  
INSTRUMENTATION PLAN AND DETAILS

**CRA Infrastructure & Engineering, Inc.**

Source Reference:		Date: SEPTEMBER 2003	
Project Manager: J. KAY	Reviewed By: BME/TFP	Designed By: DLS	Drawn By: DLS
Scale: 3/8"=1'-0"	Project No: 06883-10	Report No: 045	Drawing No: E-09