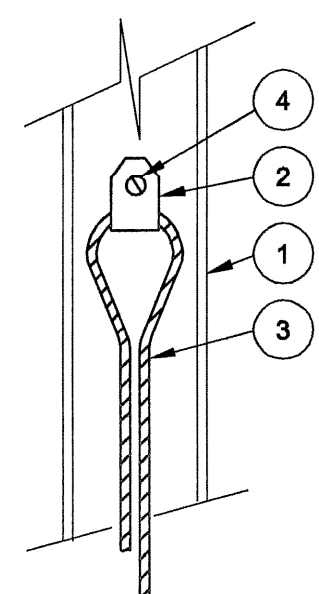
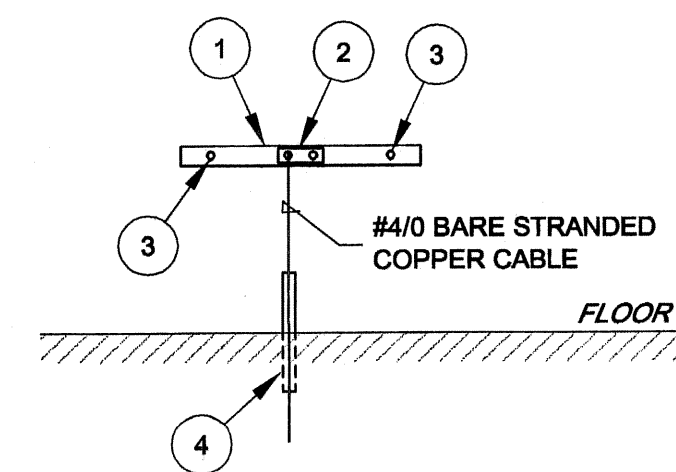


- 1 CONNECTOR: BURNDY CAT. No. GAR-6426 (1 CABLE) OR GP6426 (2 CABLES)
- 2 GROUND ROD: COPPERWELD, 3/4" DIA. x 10' LG.
- 3 INSPECTION WELL: KISTNER PULL-BOX W/CAST IRON FRAME & COVER 15" DIA. x 20" LG., PART No. PB-15S

- 1 CONNECTOR: BURNDY CAT. No. GAR-6426 (1 CABLE) OR GP6426 (2 CABLES)
- 2 GROUND ROD: COPPERWELD, 3/4" DIA. x 10' LG.

DETAIL A
GROUNDING ROD INSTALLATION - INSPECTION TYPE
N.T.S.

DETAIL B
GROUNDING ROD INSTALLATION - BURIED TYPE
N.T.S.

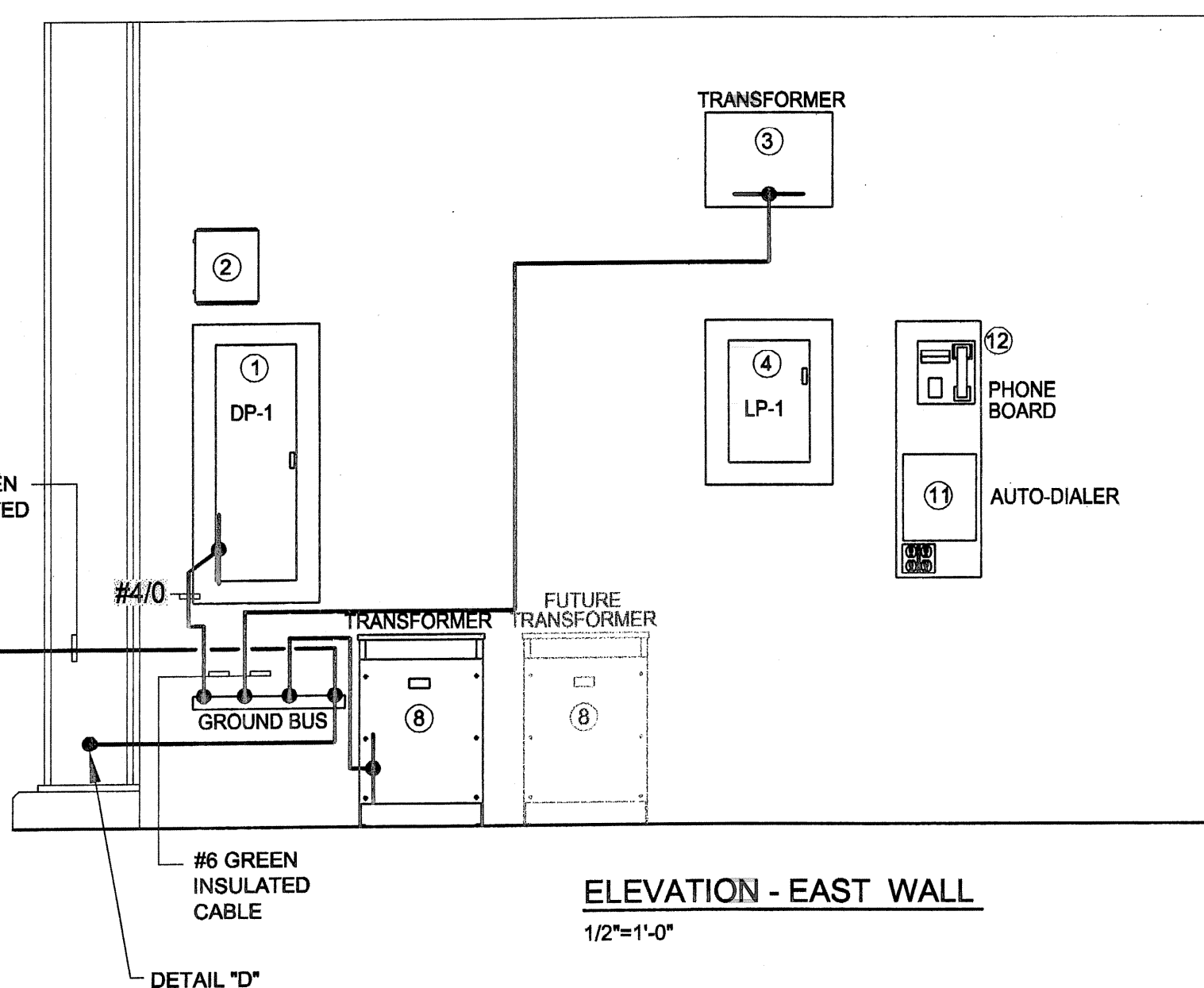
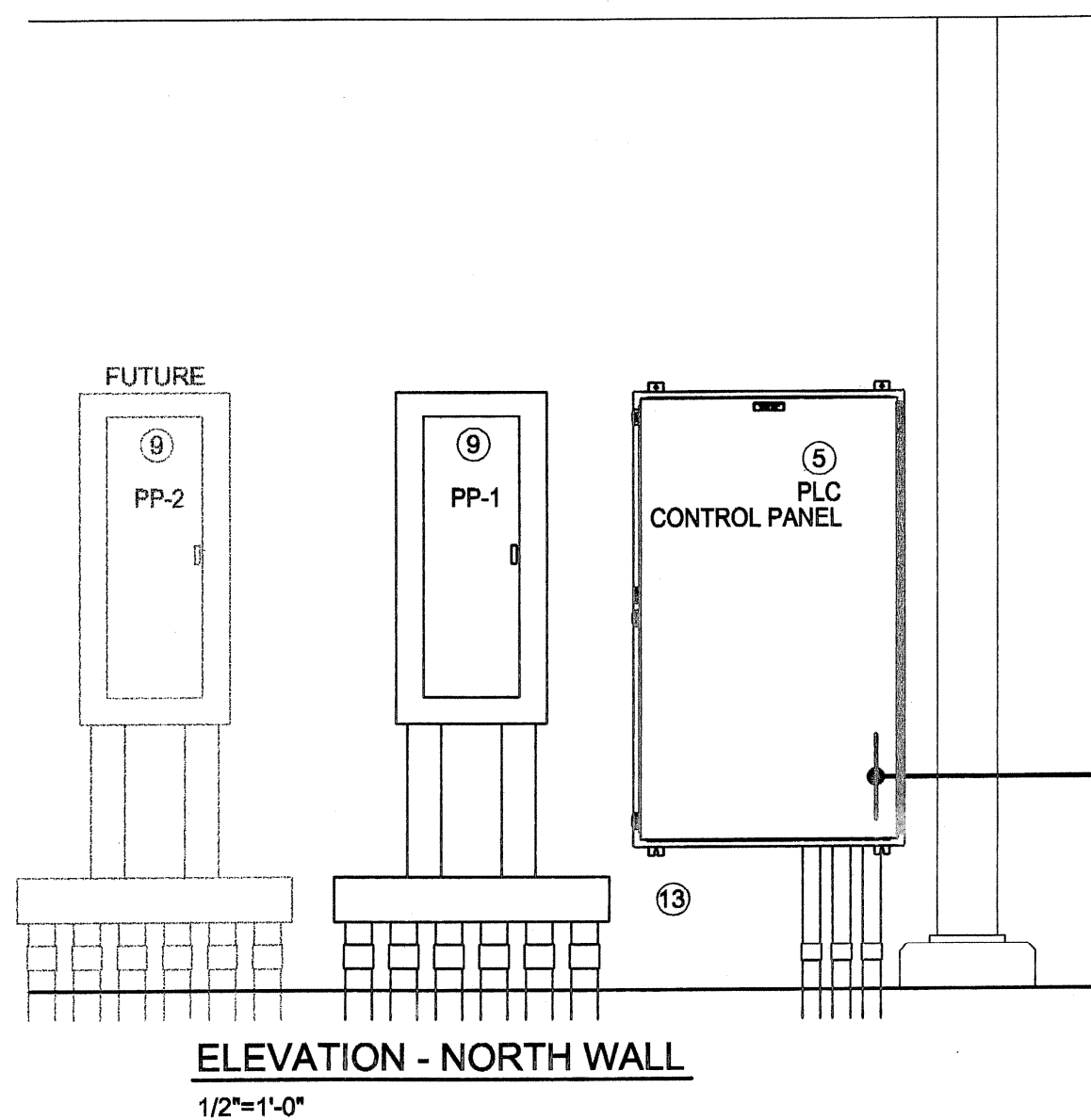
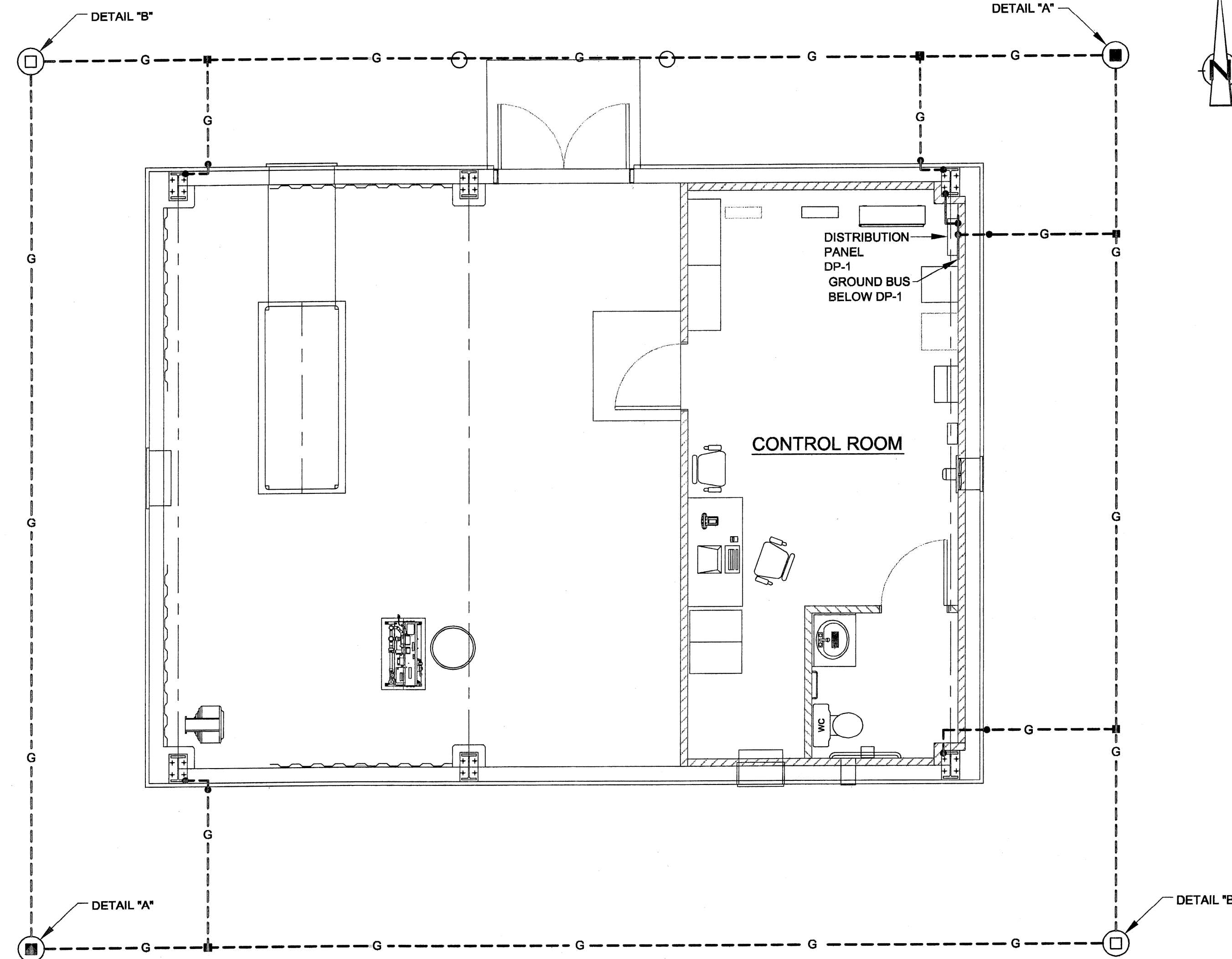


- 1 COPPER BUS: 3/8" x 2" x 24" WITH 9/16" DIA. HOLES, PREDRILLED TO ACCOMMODATE CONNECTORS AND MOUNTING BOLTS
- 2 CONNECTOR TO FLAT BAR: BURNDY CAT. No. GB26
- 3 MOUNTING: 1/2" x 2 1/2" GALVAN. BOLT; 3/4" x 2" GALVAN. PIPE SPACER; LEAD CLINCH SPACER
- 4 SLEEVE: PVC SCH. 80 CONDUIT, 1 1/4" DIA. MIN.

- 1 COLUMN (SHOWN) OR BEAM
- 2 GROUNDING CONNECTOR, CONDUCTOR TO FLAT BAR, BURNDY GB OR GC.
- 3 GROUNDING CONDUCTOR (SIZE PER PLAN)
- 4 MOUNTING HOLE, DRILL IN CENTER OF WEB, SIZE TO SUIT BOLT.

DETAIL C
GROUND BUS INSTALLATION
N.T.S.

DETAIL D
GROUNDING - TYPICAL CONNECTIONS TO STRUCTURAL STEEL
N.T.S.



NOTES

1. ALL GROUND WIRE SHALL BE SIZE #4/0 COPPER (BARE FOR BURIED AND THIN/THWN GREEN INSULATION FOR EXPOSED) UNLESS OTHERWISE NOTED.
2. COMPRESSION CONNECTION SHALL BE ACCEPTABLE METHOD OF CONNECTION OR SPLICING OF CABLE.
3. ALL HARDWARE SHALL BE EVERDUR OR SILICON BRONZE SIZED TO SUIT.
4. GROUND CABLES INSIDE BUILDING SHALL BE RUN SO THAT THEY DO NOT CONSTITUTE A TRIPPING HAZARD.
5. ROUTE CABLE ALONG SUPPORT STEEL AS REQUIRED.

LEGEND

- - - G - - - BARE GROUND CONDUCTOR - BURIED 24" BELOW GRADE
- G - INSULATED GROUND CONDUCTOR - RUN EXPOSED
- ⊥ GROUND CONNECTOR - COMPRESSION TYPE BURNDY YGHC-C, SIZE TO SUIT.

DATE PRINTED
5/26/05

100% REVIEW DRAWINGS
NOT FOR CONSTRUCTION

SCALE VERIFICATION: THIS BAR MEASURES 1" ON ORIGINAL. ADJUST SCALE ACCORDINGLY.

No	Revision	Date	Initial

Approved

5/26/05

HOOKER/RUCO SITE
HICKSVILLE, NEW YORK

BIOSPARGE TREATMENT SYSTEM

CONTROL BUILDING
GROUNDING PLAN AND DETAILS

Source Reference:		Date: SEPTEMBER 2003	
Project Manager: J. KAY	Reviewed By: BME/TFP	Designed By: DLS	Drawn By: DLS
Scale: 1/4"=1'-0"	Project No: 06883-10	Report No: 045	Drawing No: E-03