



SYRACUSE CHANNEL NEDROW FLOOD DAMAGE REDUCTION PROJECT



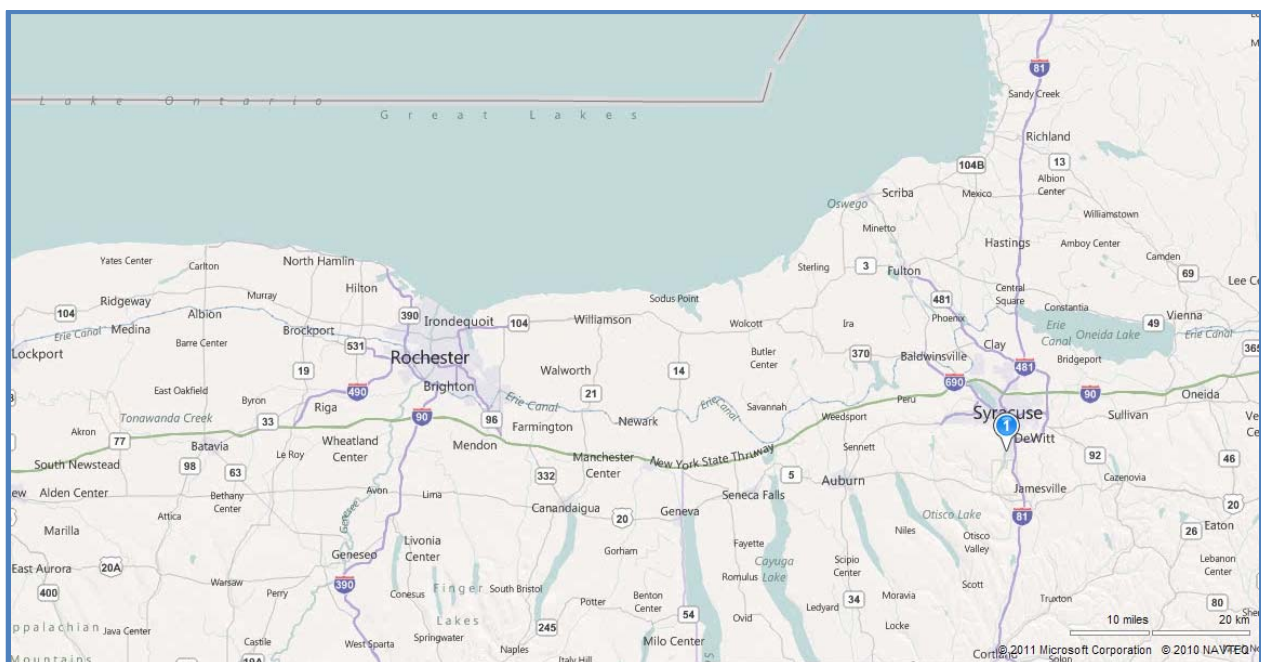
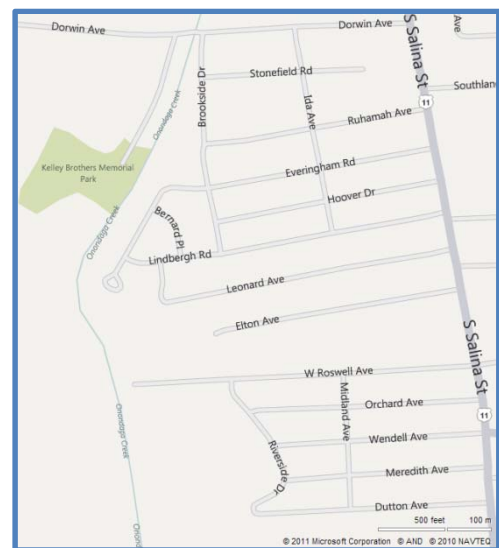
*Department of
Environmental Conservation*

*Operated and Maintained by: **The Hamlet of Nedrow***

Region 7 Counties: Broome,
Cayuga, Chenango, Cortland,
Madison, **Onondaga**, Oswego,
Tioga, Tompkins

PROJECT LOCATION

The project is located on Onondaga Creek in the unincorporated area of Nedrow, Town of Onondaga, New York, which is between the City of Syracuse and the Onondaga Nation Territory, Onondaga County, New York.



PROJECT DESCRIPTION

The project was designed to reduce flood damages in Nedrow and Syracuse, New York. Project features include channel improvement by realigning and straightening the existing channel for a total length of 5,383 feet, riprap flow diversion dikes at the upstream end of the project on both banks to concentrate and direct the flow into the channel, and placement of riprap in select areas along the channel embankments.

AUTHORIZATION

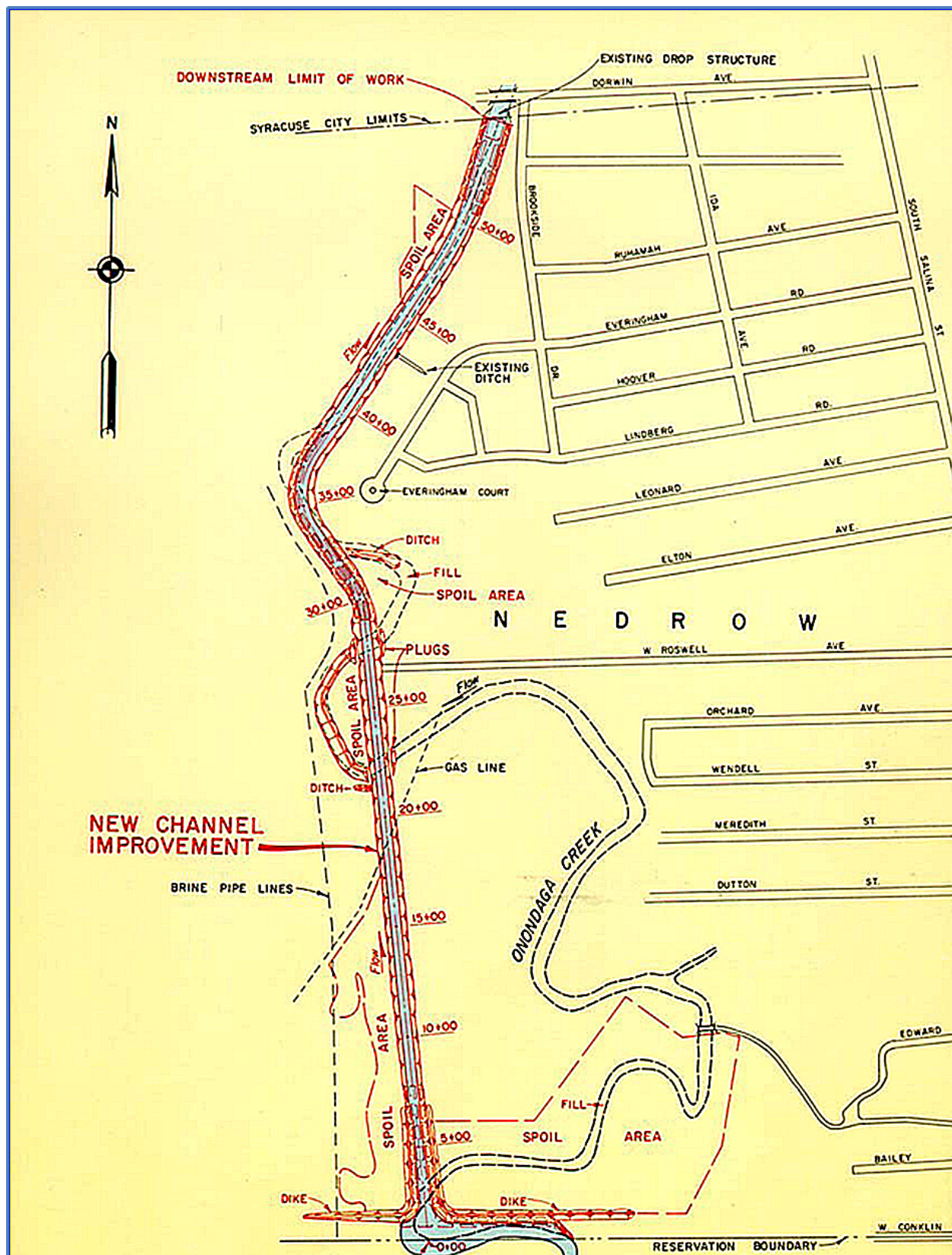
The project was authorized by Section 205 of the Flood Control Act approved June 30th, 1958, as amended by Public Law 685, 84th Congress.

CONSTRUCTION

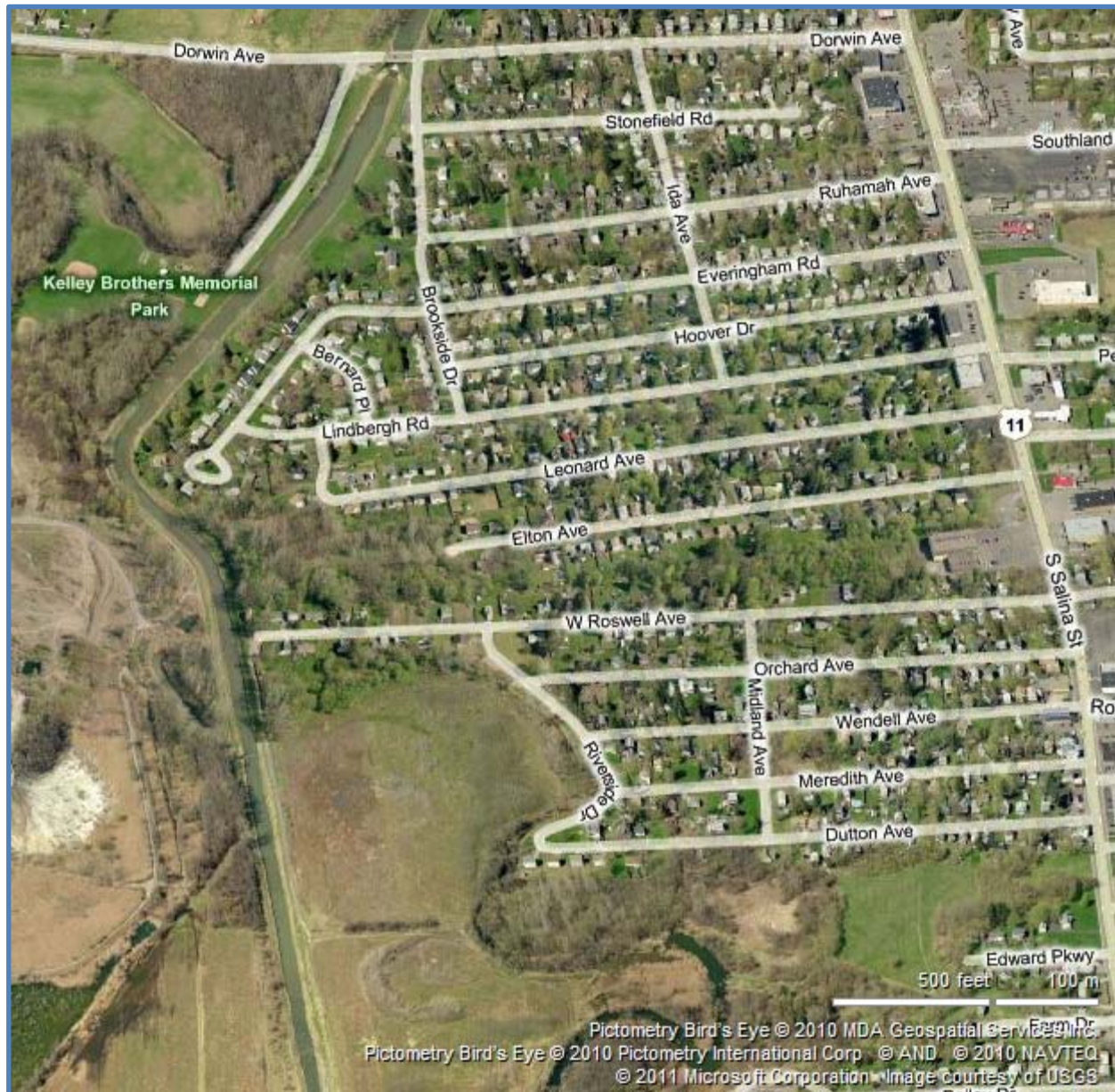
The construction of the project was initiated during May 1962 and was completed during September 1963. In summer of 1963, a small slide occurred along the auxiliary channel bank in the construction area that required corrective action that was undertaken. During December 1963, contractor widened the channel, excavated an area on the right bank, and filled the washout along the left bank with quarry run stone.

The cost of the completed project is \$330,231. In addition, the estimated costs to local interests in providing the required assurances of local cooperation are \$200,000.

SYRACUSE CHANNEL NEDROW - GENERAL PLAN



SYRACUSE CHANNEL NEDROW – BIRD’S EYE VIEW



SYRACUSE CHANNEL NEDROW – GENERAL PLAN AND AERIAL MAP OVERLAY

