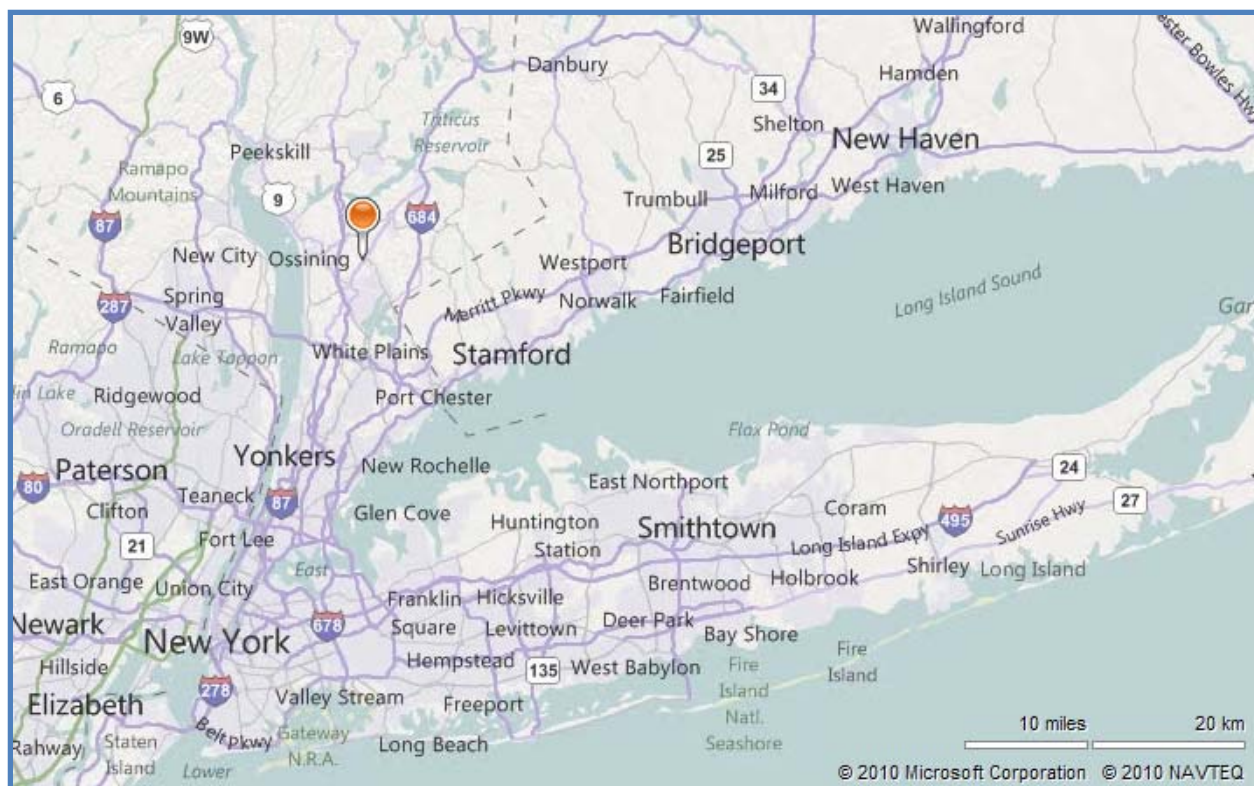
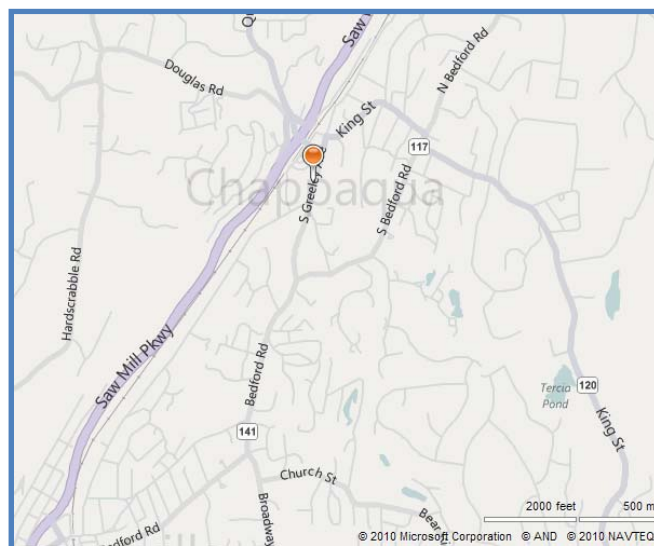




Operated and Maintained by: The Town of Chappaqua

PROJECT LOCATION

The project is located on the Saw Mill River and its tributary Tertian Brook, in the Villages of Pleasantville (Town of Mount Pleasant) and Chappaqua (Town of New Castle), Westchester County, New York.



PROJECT DESCRIPTION

This project is designed to protect approximately 27 acres of commercial and other properties within the Village of Chappaqua, New York.

Commercial areas affected are as follows:

- Retail and service establishments located along North and South Greeley Avenue
- The Chappaqua commuter railroad station parking lot at the end of Woodburne Avenue.
- The protected area also includes a high school athletic field adjacent to South Greeley Avenue.

The improvement is designed for a river discharge which has a one percent chance of occurring in any given year. The improvement is a little more than a mile in length and consists of widening and lowering both the Saw Mill River and a major tributary, including Tertian Brook, which was relocated.

The original project begins on Tertian Brook at point about 300 ft downstream of South Greeley Ave in Chappaqua, it continues downstream about 1,200 feet until it joins the Saw Mill River. From this juncture it continues about 4,300 feet downstream to a point about 400 feet west-northwest of the intersection of Washington Ave and Hillview Ave, in the Village of Pleasantville. The drainage area for the project area is 20.7 square miles.

The project consists of the following work:

- The deepening and widening of the Saw Mill River into a 30 foot wide earthen and rip-rapped channel from the Tertian Brook confluence to the downstream limit.
- The construction of a retaining wall near the downstream limit of the project on the Saw Mill River.
- The project also includes an improved channel for an unnamed tributary of Tertian Brook.

AUTHORIZATION

Section 205, Flood Control Act of 1948, as amended.

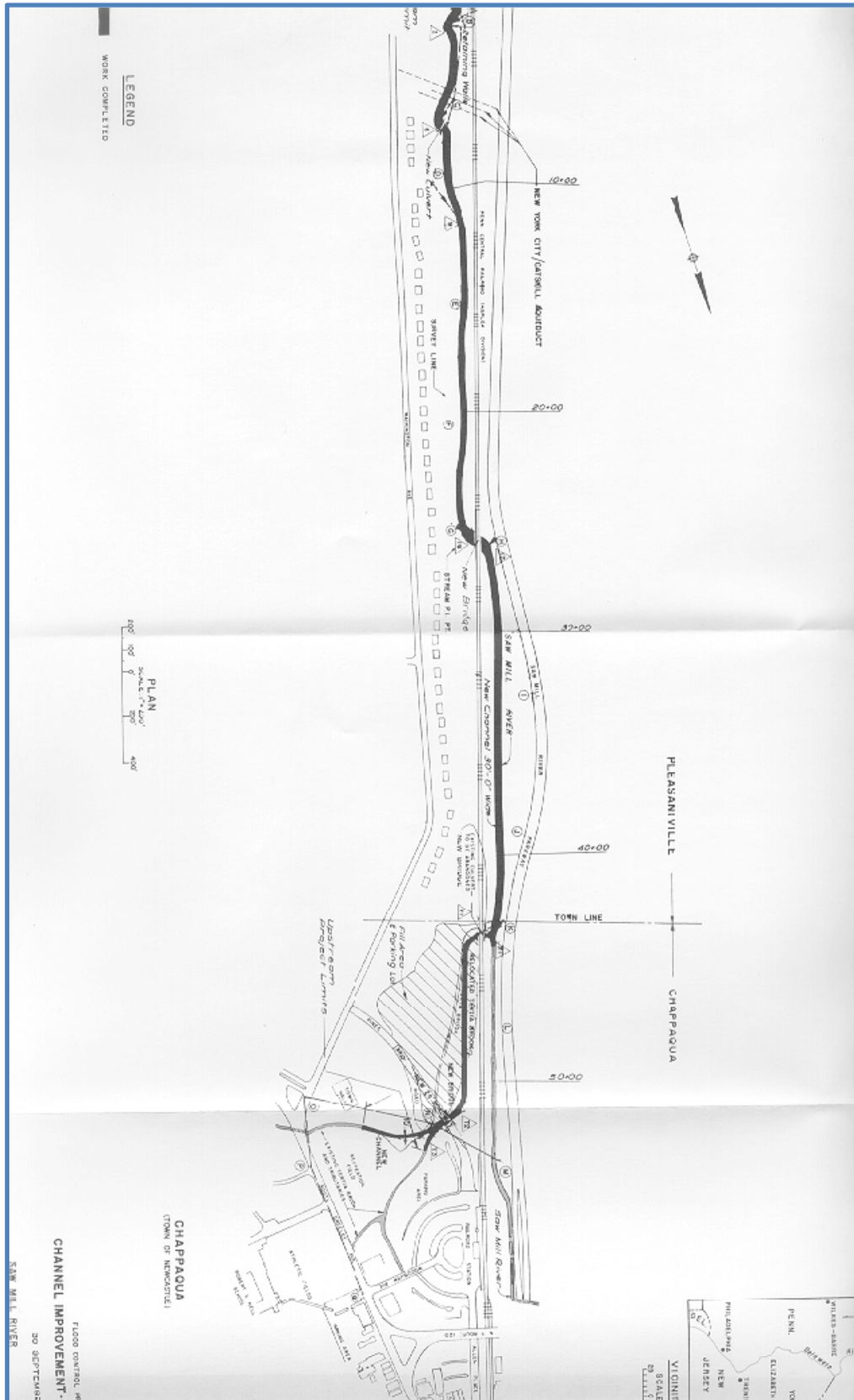
CONSTRUCTION

The Flood Control Project is located on the Saw Mill River and its tributary, Tertian Brook, in the Village of Pleasantville (Town of Mount Pleasant) and Chappaqua (Town of New Castle). The sides of the Saw Mill River and Tertian Brook are lined with vegetative (crown vetch) lining and at locations, one foot deep riprap. Two existing railroad bridges were replaced by larger pre-cast structures. An existing access to city water supply aqueducts was enlarged and an existing vehicular stone culvert bridge used for railroad station access was replaced with a larger concrete structure.

In addition, work also involved relocation of the existing road serving the vehicular bridge, relocating underground utilities and using the excavated material to construct an open area suitable for future use by the local interests.

The Federal share of the total cost as of January 30th, 1982, was approximately \$1,565,000. This does not include Federal costs for railroad work performed by Conrail.

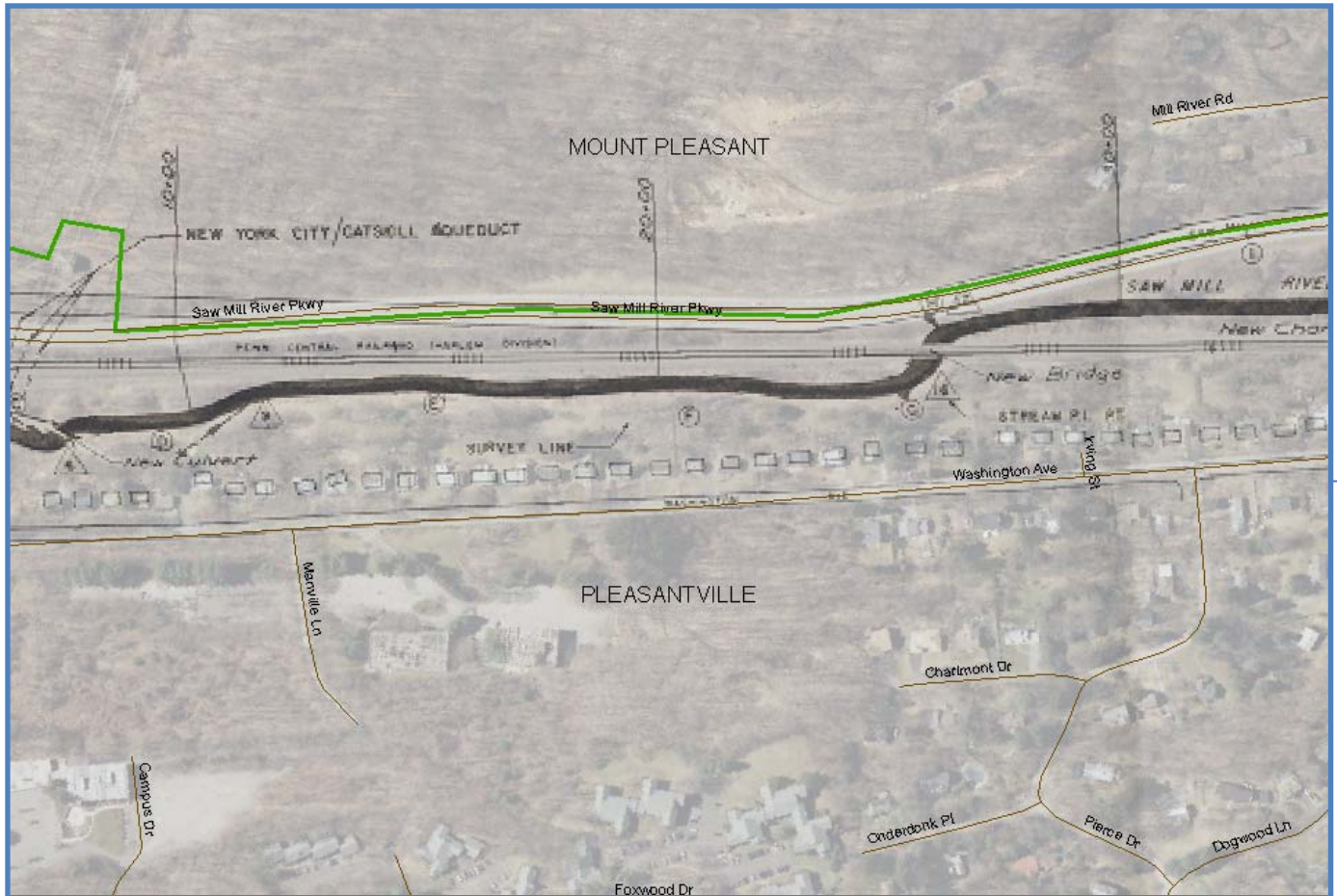
CHAPPAQUA - GENERAL PLAN



CHAPPAQUA – BIRD’S EYE VIEW



CHAPPAQUA – GENERAL PLAN AND AERIAL MAP OVERLAY



CHAPPAQUA - GENERAL MAP AND AERIAL MAP OVERLAY

