



BOLIVAR FLOOD DAMAGE REDUCTION PROJECT



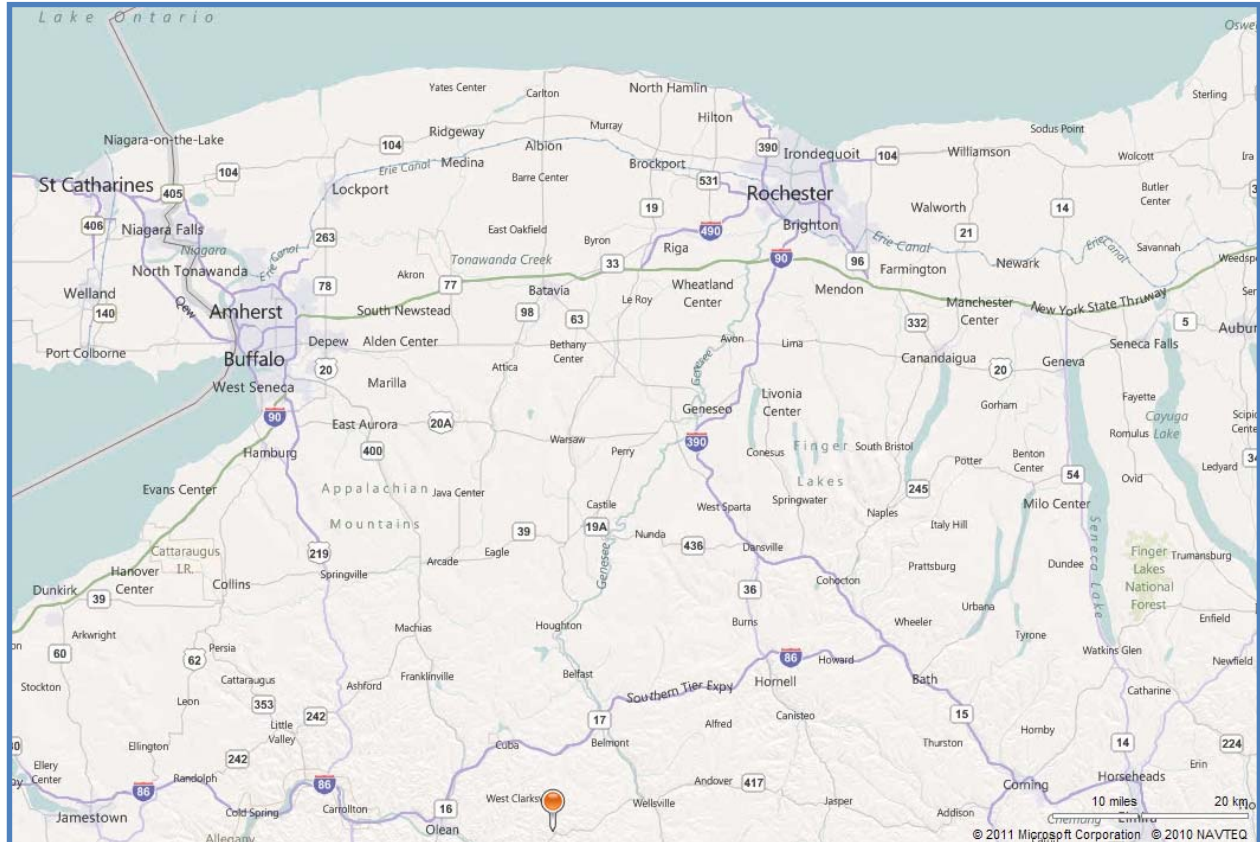
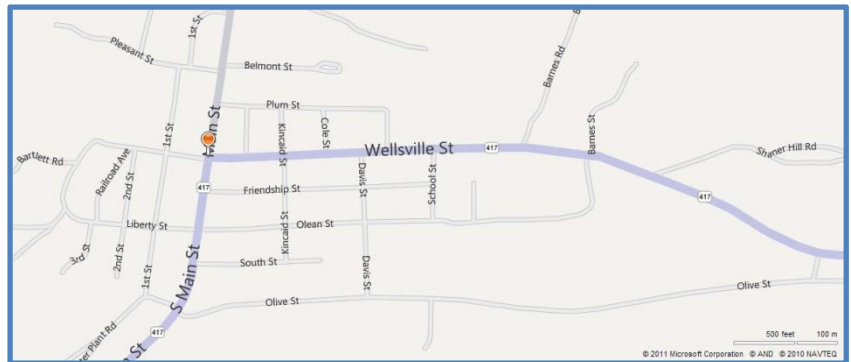
*Department of
Environmental Conservation*

Operated and Maintained by: The Village of Bolivar

Region 9 Counties: *Allegany,
Chautauqua, Cattaraugus, Erie,
Niagara, Wyoming*

PROJECT LOCATION

The project is located on Root
Creek in Bolivar, Allegany
County, New York.



PROJECT DESCRIPTION

The project consists of the following work:

- Providing protection along 4,750 feet of Root Creek by the widening and deepening of the channel.
- Slope protection.
- Drop structures.
- The construction of a debris basin.
- Bridge invert, and abutment protection.

Hydrology and Hydraulic design:

The drainage area of Root Creek above the downstream limit of the project is 9.1 square miles. The maximum flood of record occurred in June 1972 with a peak flow of 2,000 c.f.s., the project is designed to provide complete protection against a recurrence of the maximum flood of record.

Based on July 1974 price levels, average annual benefits, and charges are estimated to be \$48,000 and \$41,000 respectively; indicating a favorable economic ratio of 1.16. The Final Detailed Project Report was approved by the Chief of Engineers on April 29th, 1976 and the Final Environmental Impact Statement was filed with the Council on Environmental Quality on March 5th, 1976.

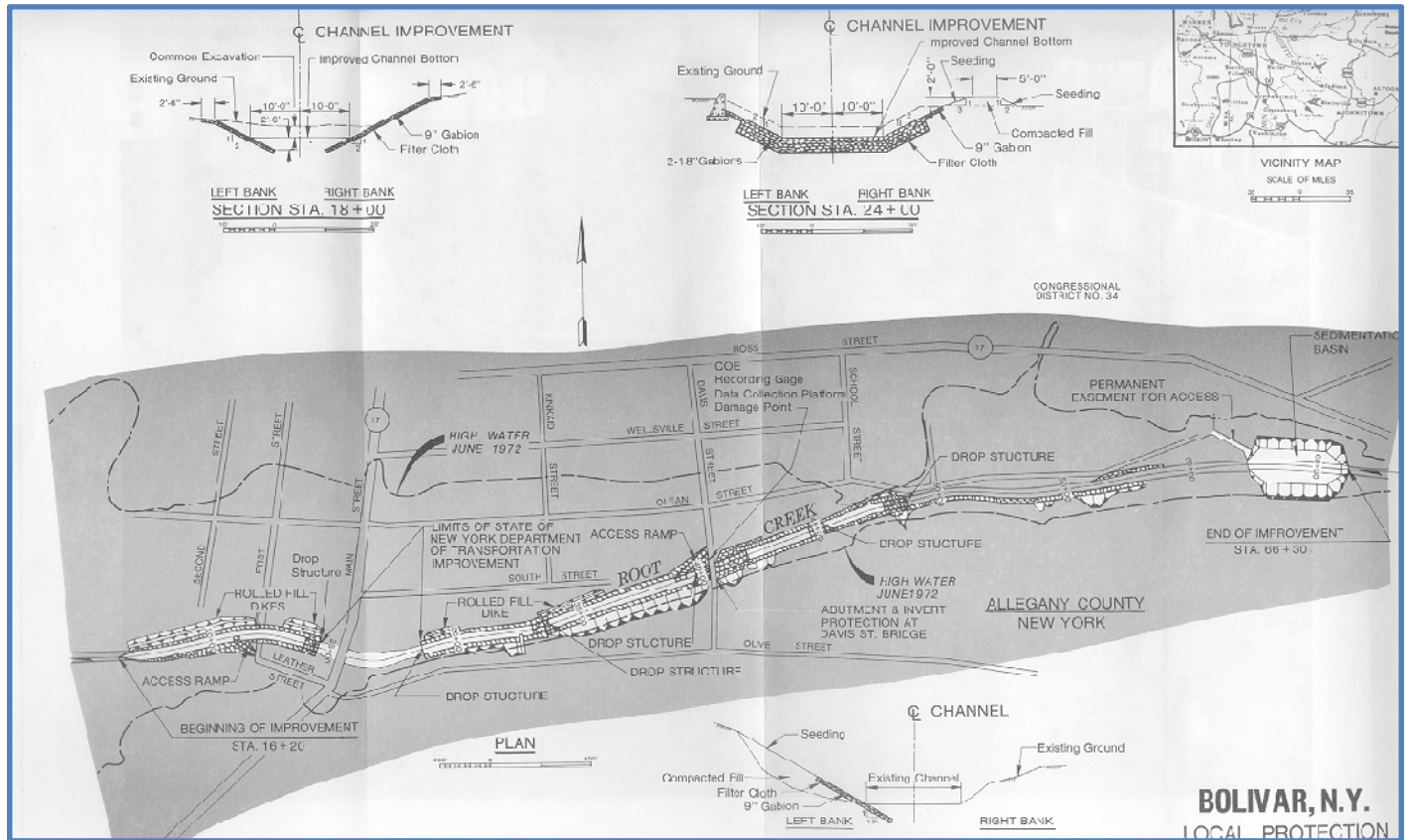
Local interests: Formal assurances of cooperation were furnished November 8th, 1976 and accepted April 6th, 1977. Rights of entry for construction were furnished on October 27th, 1978 and November 15th, 1978. Contract for construction was awarded September 17th, 1979. Construction was completed in July 1982 and turned over to the State of New York in February 1984.

CONSTRUCTION

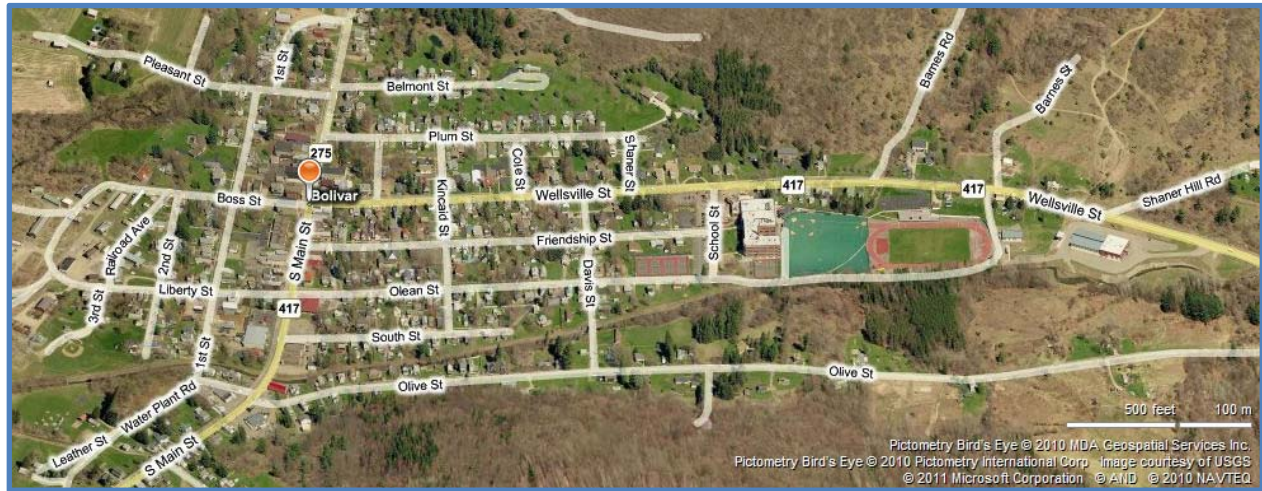
Cost estimated October 1st, 1981

Federal	\$1,525,000
Non-Federal	\$36,000
Federal cost to September 30th, 1986	\$1,591,436
Federal allotments to September 30th, 1986	\$1,591,436

BOLIVAR – GENERAL PLAN



BOLIVAR – BIRD’S EYE VIEW



BOLIVAR – GENERAL PLAN AND AERIAL MAP OVERLAY

