



# BAINBRIDGE FLOOD DAMAGE REDUCTION PROJECT



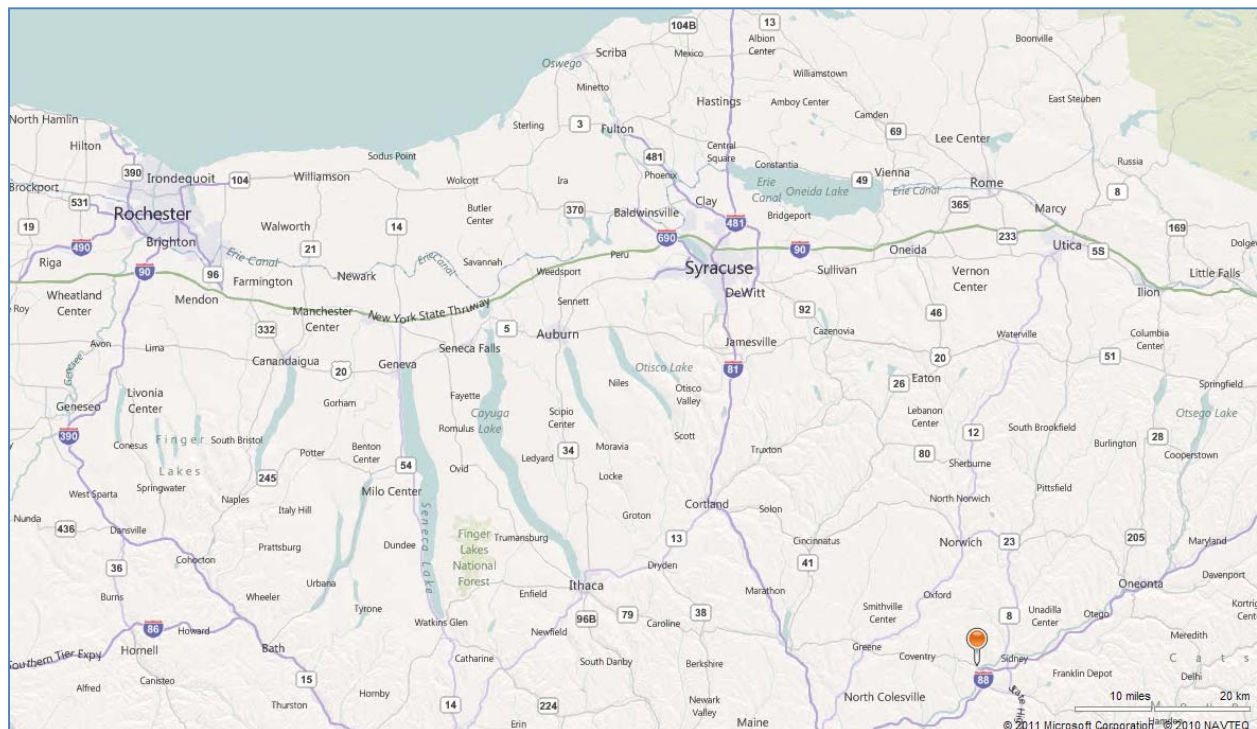
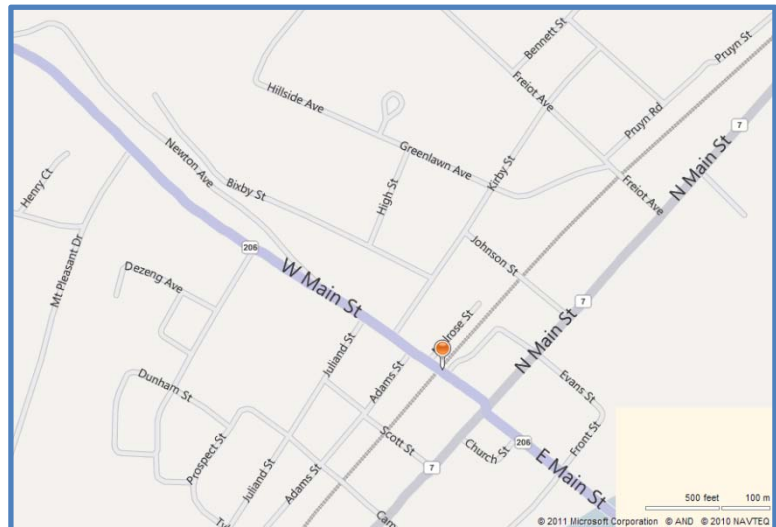
*Department of  
Environmental Conservation*

*Operated and Maintained by: New York State*

**Region 7 Counties:** Broome,  
Cayuga, **Chenango**, Cortland,  
Madison, Onondaga, Oswego,  
Tioga, Tompkins

## PROJECT LOCATION

The project is located on Newton Creek in the Village of Bainbridge, Chenango County, New York.



## **PROJECT DESCRIPTION**

The Bainbridge Project on Newton Creek consists of the following:

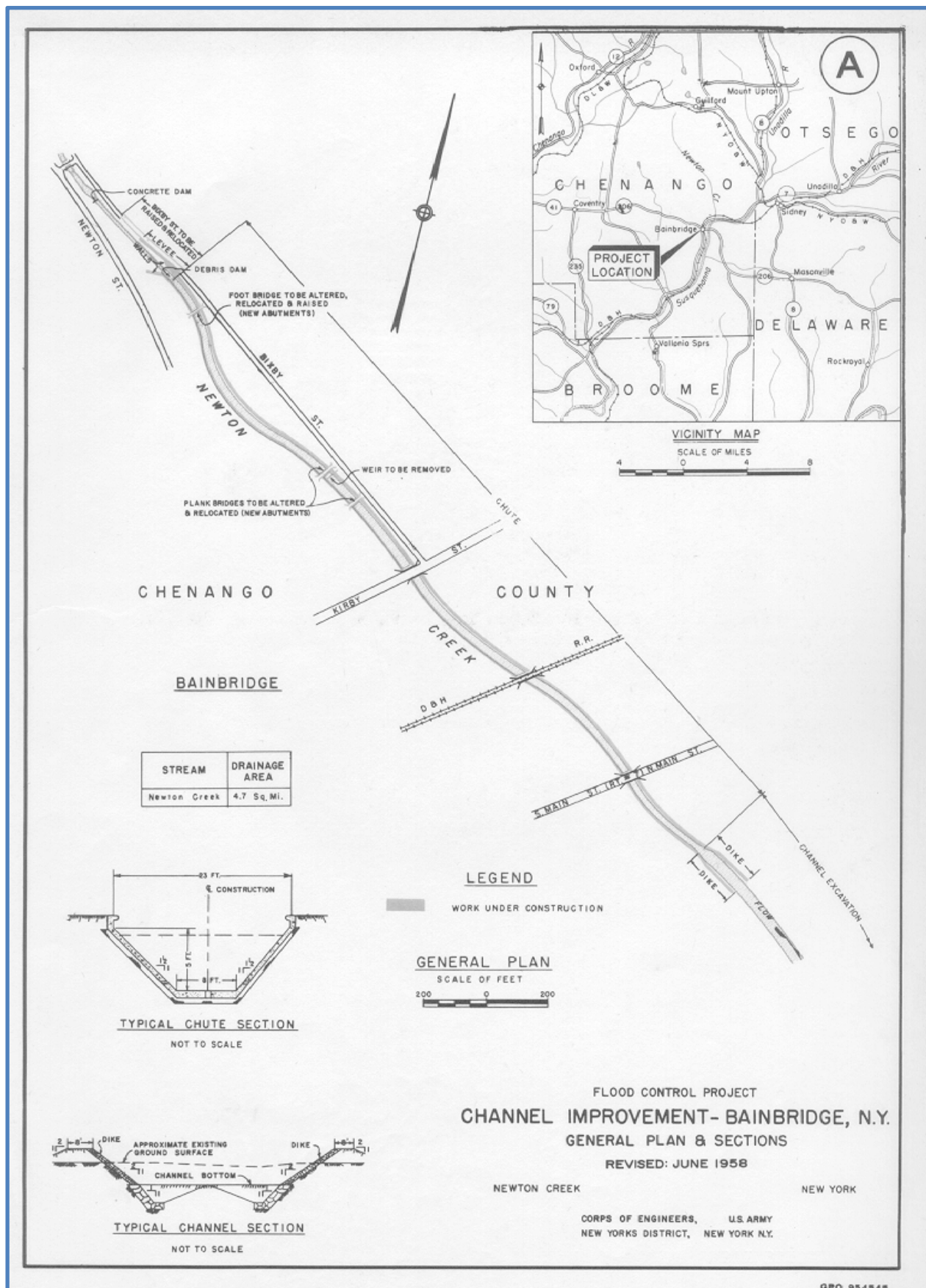
- A realigned channel shaped into a uniform concrete trapezoidal chute for 2,335 feet.
- A debris dam with concrete wingwalls is at the upstream end of the project.
- Abutments were provided for one foot bridge and two plank bridges.
- At the downstream end of the project, the channel was improved, and soil dikes were built to contain the flow.

The largest recorded flood on this creek at the time of project construction occurred in July 1951 and reached a peak discharge of 1,600 cubic feet per second. The project is designed to contain a flow of 2,500 cubic feet per second.

## **CONSTRUCTION**

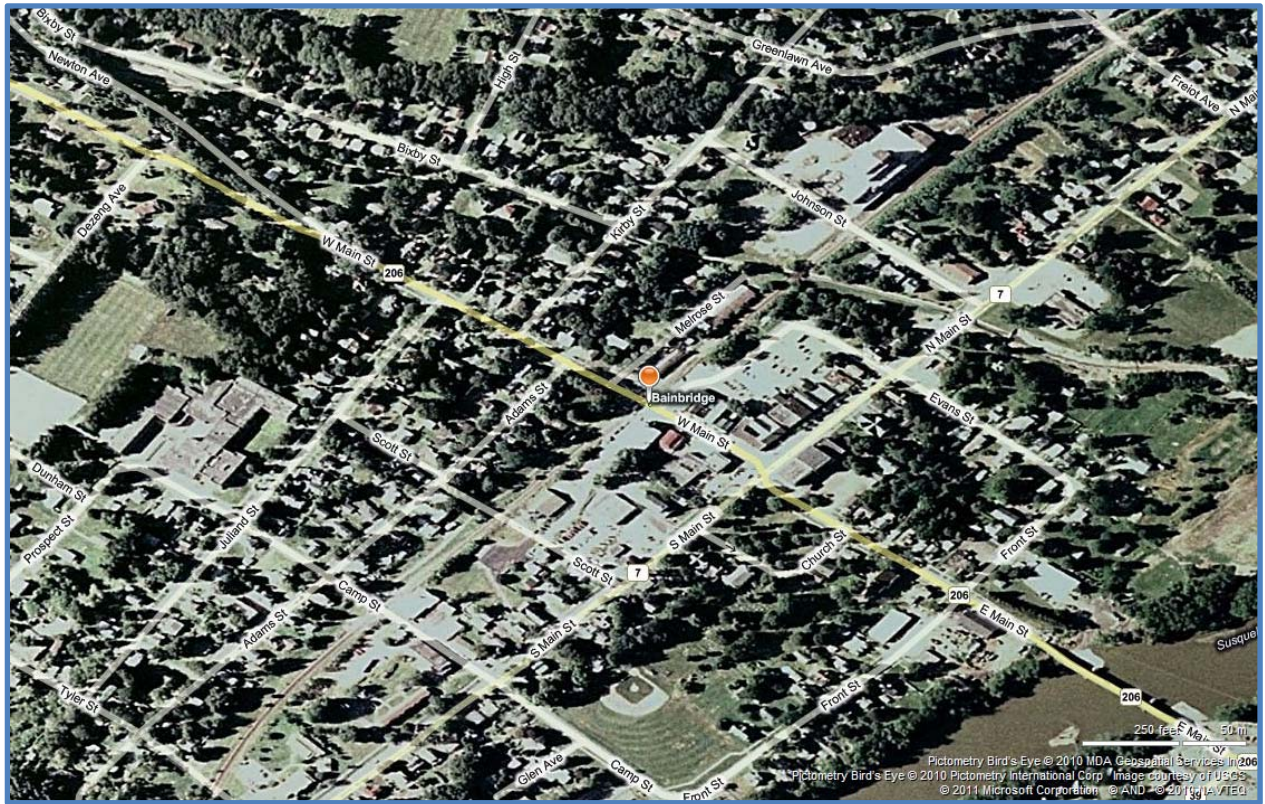
Construction was initiated June 14<sup>th</sup>, 1958 and completed August 25<sup>th</sup>, 1959. The Federal cost of the project was \$382,000. The reported cost to local interest was \$196,500, which includes \$34,000 contributed by the Village of Bainbridge toward the State's costs.

# BAINBRIDGE - GENERAL PLAN





## BAINBRIDGE – BIRD'S EYE VIEW



**BAINBRIDGE – GENERAL PLAN AND AERIAL MAP OVERLAY**

