



ALFORD FLOOD DAMAGE REDUCTION PROJECT



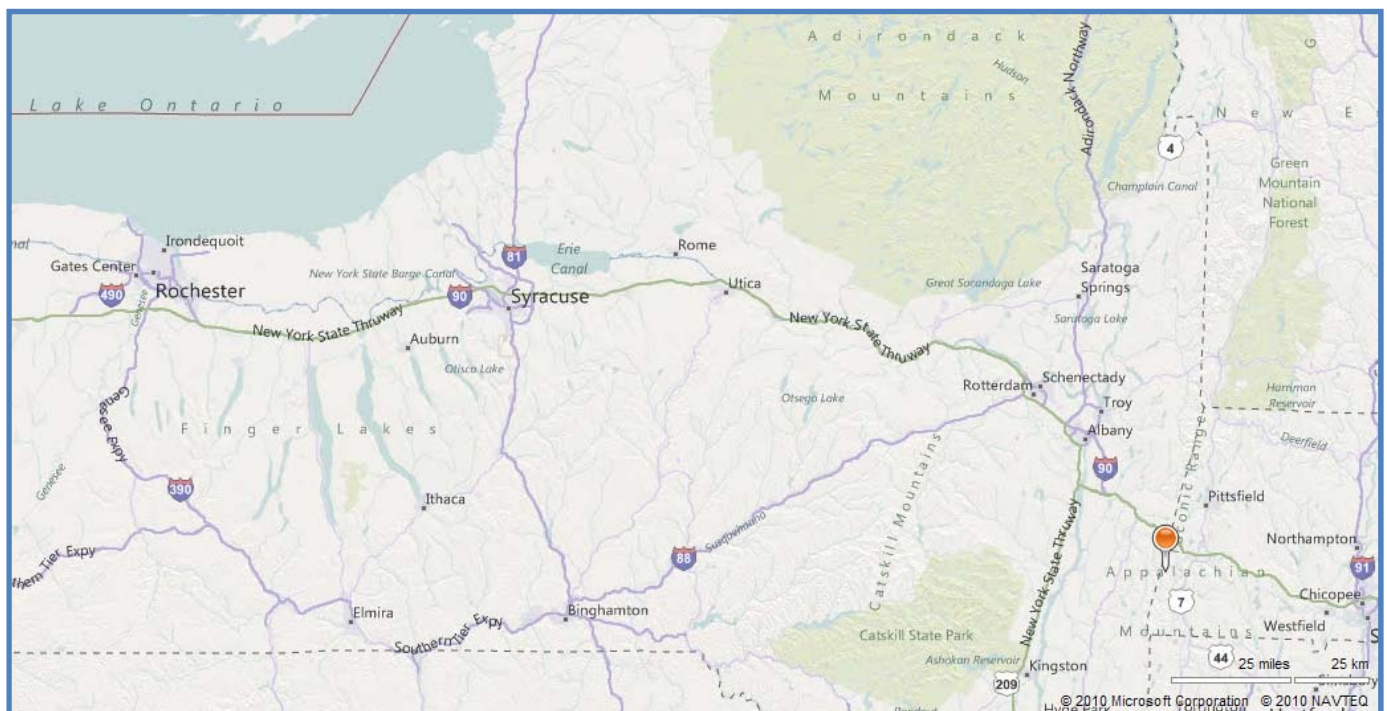
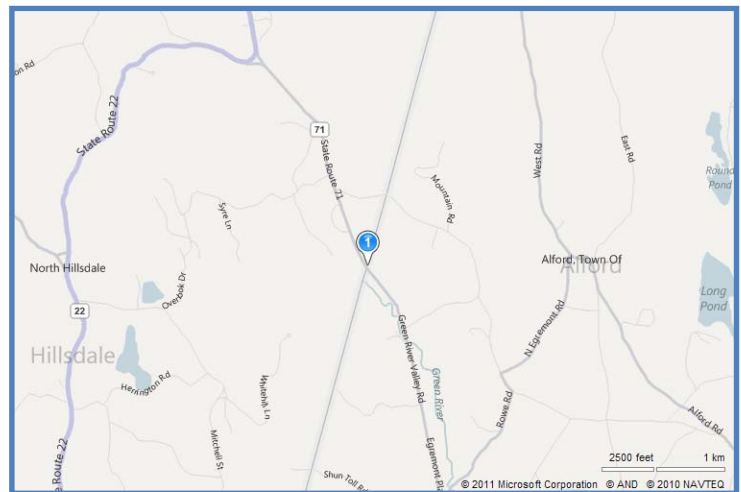
*Department of
Environmental Conservation*

Region 4 Counties: Albany, Columbia, Delaware, Greene, Montgomery, Otsego, Rensselaer, Schenectady, Schoharie

Operated and Maintained by: The Town of Hillsdale

PROJECT LOCATION

The project is located in the Town of Hillsdale, New York on a sharp bend in the Green River just west of the Massachusetts State Line and adjacent to Massachusetts – New York Route 71.



PROJECT DESCRIPTION

The project consists of the construction of a stone-protected deflector dike approximately 280 feet in length, along the left bank of the river. The dike is constructed of a 3 foot depth of stone weighing between 200 and 600 pounds. The stone is placed on one foot of gravel bedding which in-turn is placed on a compacted random fill base.

PROJECT AUTHORIZATION

Construction of the existing emergency bank protection project at Hillsdale, New York and Alford, Massachusetts, was authorized by the Chief of Engineers on June 5th, 1974 pursuant to authority contained in Section 14 of the 1946 Flood Control Act, as amended.

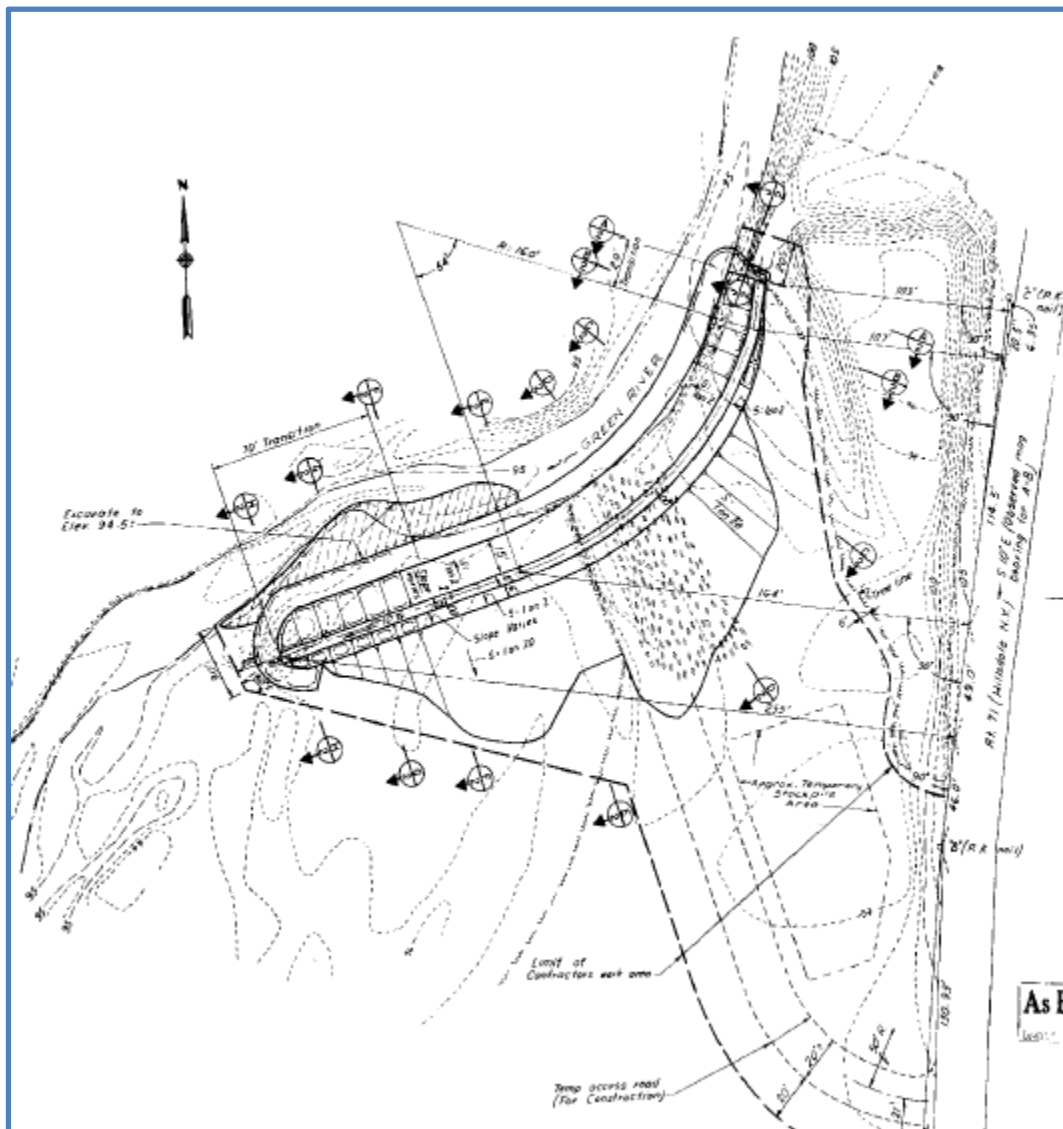
PROTECTION PROVIDED

The stone-protected deflector dike will prevent further erosion of the riverbank at the bend and eliminate the short-cutting of the river across the fields adjacent to Route 71. The dike will also reduce the downstream turbidity and siltation produced by the eroding river bank.

CONSTRUCTION

Construction of this bank protection project was initiated in October 1975 and was completed in June 1976. The project was constructed by Almag Construction, Inc. of Valley Falls, New York. The Federal cost of the project was approximately \$22,000.

ALFORD – GENERAL PLAN



ALFORD - BIRD'S EYE VIEW



