

Dear Interested Citizen,

This fact sheet provides you with information on the siting location, Wastebed 13, for the Sediment Consolidation Area (SCA) for the Onondaga Lake Bottom Site. The SCA will contain sediment removed from Onondaga Lake during the lake cleanup and will be monitored. If you have any questions or would like more information about this project, please contact:

Mr. Timothy Larson, P.E.

Project Manager

NYSDEC

625 Broadway, 12th Floor
Albany, New York 12233-7016
(518) 402-9767

or

for health-related questions, contact the New York State Department of Health (NYSDOH) at the following:

Ms. Henriette Hamel
Regional Coordinator -
Environmental Health
Assessment

NYSDOH, Syracuse
217 South Salina St., 3rd Floor
Syracuse, New York 13202-3592
(315) 477-8163

New York State Department of Environmental Conservation **FACT SHEET**

Wastebed 13 Identified for Onondaga Lake Bottom Sediment Consolidation Area

**Onondaga Lake Bottom Site (#7-34-030)
Camillus, Onondaga County - October 2006**

Background

The Record of Decision, issued by NYSDEC and EPA on July 1, 2005, documents the selected cleanup plan for the Onondaga Lake Bottom Site. This cleanup plan includes dredging an estimated 2,653,000 cubic yards of contaminated sediment/waste from Onondaga Lake and placement of the majority of the dredged material in a Sediment Consolidation Area (SCA) constructed on one or more of Honeywell's Solvay wastebeds. The SCA will be designed and built in accordance with state and federal requirements and guidance and will include the following:

- an impermeable liner beneath and around the sediment;
- a collection and treatment process for water draining out of the sediment; and
- a protective cover over the sediment.

Solvay Wastebed B and Wastebeds 1-15 were evaluated as potential SCA locations (see SCA Siting Evaluation Figure 1 [attached]). Wastebed B is along the southwestern shoreline of Onondaga Lake and Wastebeds 1-8 are north of the New York State Fairgrounds and I-690. Wastebeds 9-15 are located southwest of the 695 - I-690 Interchange.

Onondaga Lake SCA Siting Evaluation

All 16 wastebed locations were assessed based on potential impacts on the local community, accessibility, estimated capacity, current and potential future reuse opportunities, and geotechnical feasibility. The details of this assessment which are presented in the Onondaga Lake SCA Siting Evaluation (Honeywell, September 2006) are summarized below:

The assessment identifies Wastebed 13 as the preferred location for the Onondaga Lake Bottom Site SCA for the following reasons:

- Easily accessible by truck and sediment slurry piping along Nine Mile Creek to Onondaga Lake;
- Sufficient capacity for lake sediments;
- Requires minimal or no increase to the perimeter dike height;
- Most recent wastebed constructed and expanded following stringent specifications and quality assurance/quality control procedures;
- Some or all of the natural vegetative visual barriers can remain around the site;
- Less construction time, traffic and noise in local communities;
- Smallest potential for community disruptions; and
- Potential opportunities for reuse and redevelopment following capping of the SCA.

Wastebeds B, 1-8, 9-11, 12, 14 and 15 are not recommended for the following reasons:

- Wastebed B and Wastebed 15 do not have sufficient capacity for the estimated amount of dredged lake sediments.
- Wastebeds 1-8's topography will not meet SCA construction requirements.
- Wastebeds 9-11 and 14 have a slightly higher likelihood of potential community impacts due to their proximity to public facilities, such as golf courses, parks, and the State Fairgrounds.
- Wastebeds 9-11 would require higher dikes and result in associated potential construction related impacts and the right-of-way for the power transmission lines poses construction challenges.
- Wastebed 14 is smaller in capacity than Wastebed 13.
- Wastebed 12 would require increasing its dike height, which would lengthen construction schedules and increase truck traffic on local roads.

NYSDEC and EPA agree with the recommended selection of Wastebed 13 for the SCA. NYSDEC will oversee the design and construction of the SCA, the transport of the sediment from the lake bottom to the SCA, and the covering (capping) of the site. Inspections of the cap that is constructed on the SCA will be performed quarterly. NYSDEC is committed to working with the community and Honeywell on a plan for reuse of the land after completion of the project.

Throughout the project, the air will be monitored for any odors or emissions. If any odors or emissions occur they will be controlled to minimize effects on the local community. No odors or emissions are expected once the SCA is covered (capped) after the cleanup is completed. The cap will be designed pursuant to applicable regulations and guidance and the sediment will be contained beneath the cap.

Public Comment

A public availability session and a public meeting have been scheduled (see the details below) as part of the citizens' participation program for this site. The public availability session will provide an opportunity for you to learn more about the SCA Siting Evaluation directly from NYSDEC staff who will be available to respond to your questions. During the public meeting, NYSDEC will present the SCA siting information, respond to your questions, and accept public comments.

NYSDEC will accept written public comments during the public comment period commencing on October 12, 2006 and ending on November 13, 2006. Comments should be sent to the Project Manager whose address is provided on the front page of this fact sheet. Alternatively, comments may be sent via email to the following email address: derweb@gw.dec.state.ny.us (Please indicate "Onondaga Lake" in the subject line of the e-mail.) A "Responsiveness Summary" will be prepared that describes public comments received and how the NYSDEC will address the concerns raised.

On October 19, 2006 from 3:00 to 5:00 P.M., the NYSDEC will hold an informal availability session for questions and answers regarding the SCA Siting Evaluation. The formal public meeting will be held on October 19, 2006 at 7:00 P.M. Both the availability session and the public meeting will take place at the Martha Eddy Room in the Art and Home Center at the New York State Fairgrounds.

Next Steps

NYSDEC will continue to work with Honeywell on an approach for designing and constructing the Onondaga Lake Bottom Site SCA at Wastedbed 13, as well as all other aspects of the Onondaga Lake cleanup. Technical documents will be reviewed and approved throughout the design and construction phases of the project to ensure the effectiveness of the site remediation.

It is an NYSDEC priority to continue the public outreach process. Meetings have previously been held with Camillus residents and meetings with interested parties, the public and the scientific community will continue with the purpose of fostering good communication, progress, and a project that benefits the entire community. Updates will also be provided through fact sheets such as this one. NYSDEC is committed to working with the community and Honeywell on a plan for reuse of the land after completion of the project.

Document Repositories

The SCA Siting Evaluation is available for review at the following locations:

Atlantic States Legal Foundation

658 West Onondaga Street
Syracuse, NY 13204
Phone: (315) 475-1170
Please call for hours of availability

Liverpool Public Library

310 Tulip Street
Liverpool, NY 13088
Phone: (315) 457-0310
Hours: M - Th, 9:00 a.m. - 9:00 p.m.;
Fri, 9:00 a.m. - 6:00 p.m.;
Sat, 10:00 a.m. - 5:00 p.m.;
Sun, 12:00 p.m. - 5:00 p.m.

NYSDEC, Region 7

615 Erie Blvd. West
Syracuse, NY 13204
Phone: (315) 426-7400
Hours: M - Fri, 8:30 a.m. - 4:45 p.m.
Please call for an appointment

Onondaga County Public Library

Syracuse Branch at the Galleries
447 South Salina Street
Syracuse, NY 13204-2400
Phone: (315) 435-1800
Hours: M, Th, Fri, Sat, 9:00 a.m. - 5:00 p.m.; Tu, W, 9:00 a.m. - 8:30 p.m.

Moon Library

SUNY ESF
1 Forestry Drive
Syracuse, NY 13210
Phone: (315) 470-6712
Hours: check <http://www.esf.edu/moonlib/>

Camillus Town Hall

4600 West Genesee Street, Room 100
Syracuse, NY 13219
Hours: M-Fri, 8:30 a.m. - 4:30 p.m.
Phone: (315) 488-1234

NYSDEC

625 Broadway
Albany, NY 12233-7016
Phone: (518) 402-9767
Hours: M - Fri, 8:30 a.m. - 4:45 p.m.
Please call for an appointment

Detailed information on the SCA Siting Evaluation and other aspects of the Onondaga Lake cleanup is also available online at <http://www.dec.state.ny.us/website/der/projects/ondlake/> on the NYSDEC website.

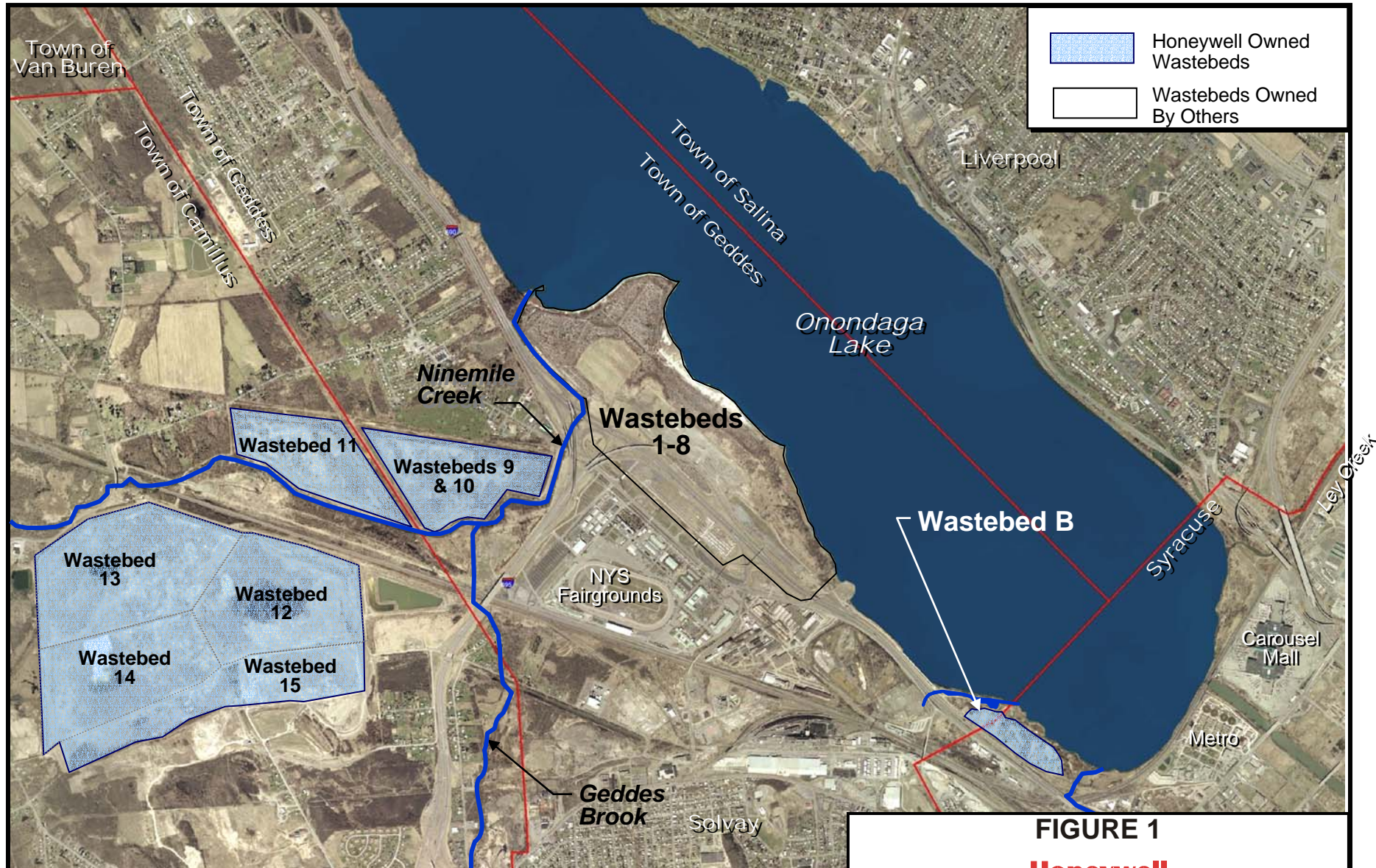


FIGURE 1
Honeywell
Wastebed Locations Evaluated