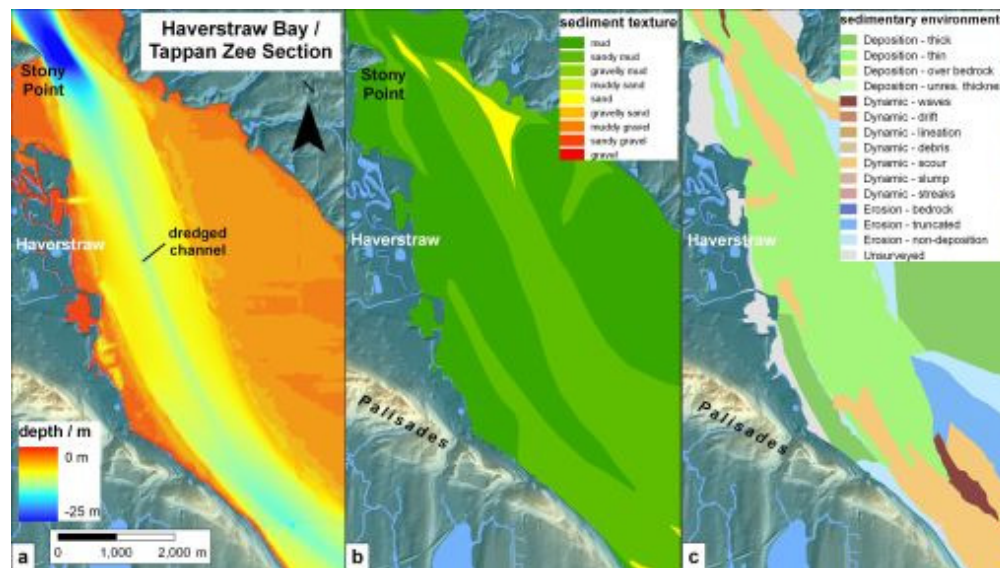


Selected Images Of the Floor of the Hudson River Estuary



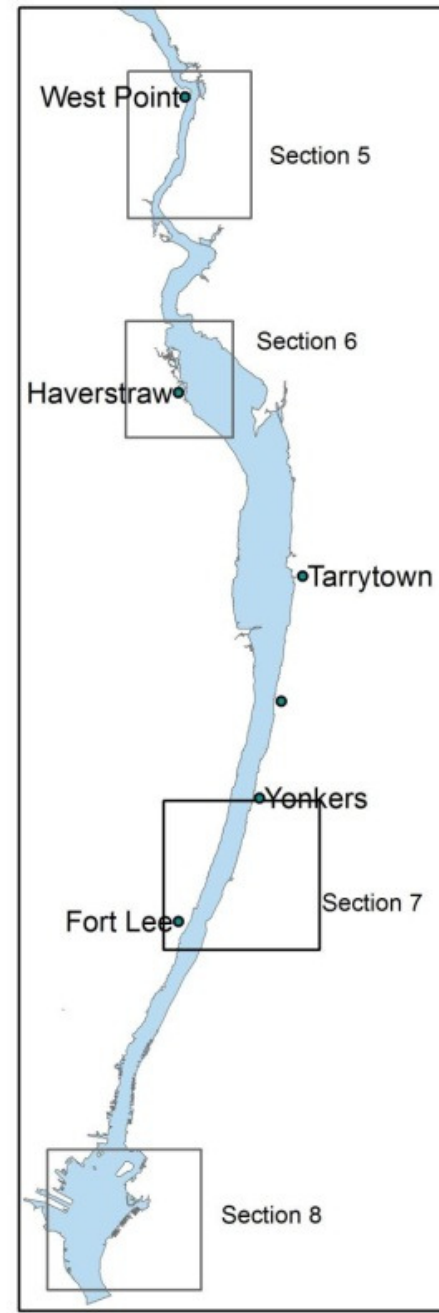
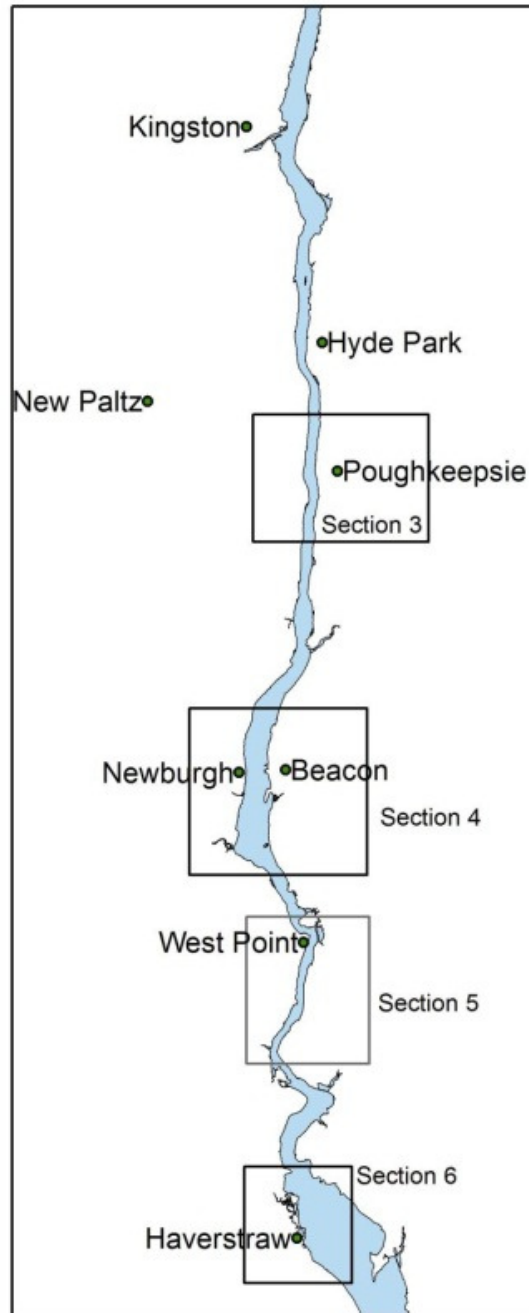
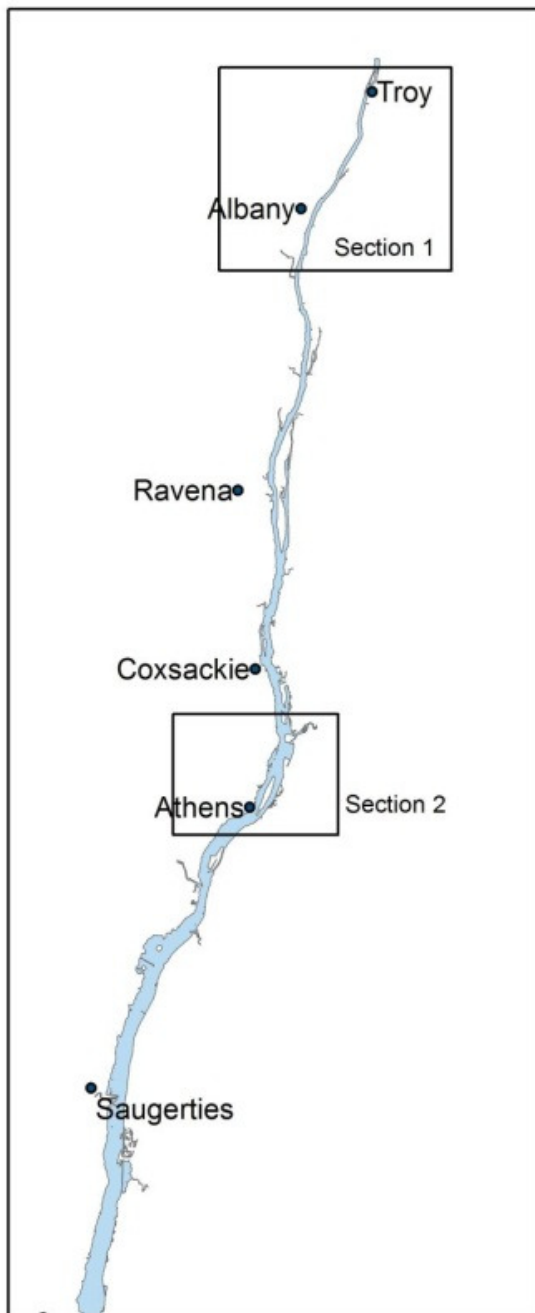
Images Produced for the Hudson River Estuary Program

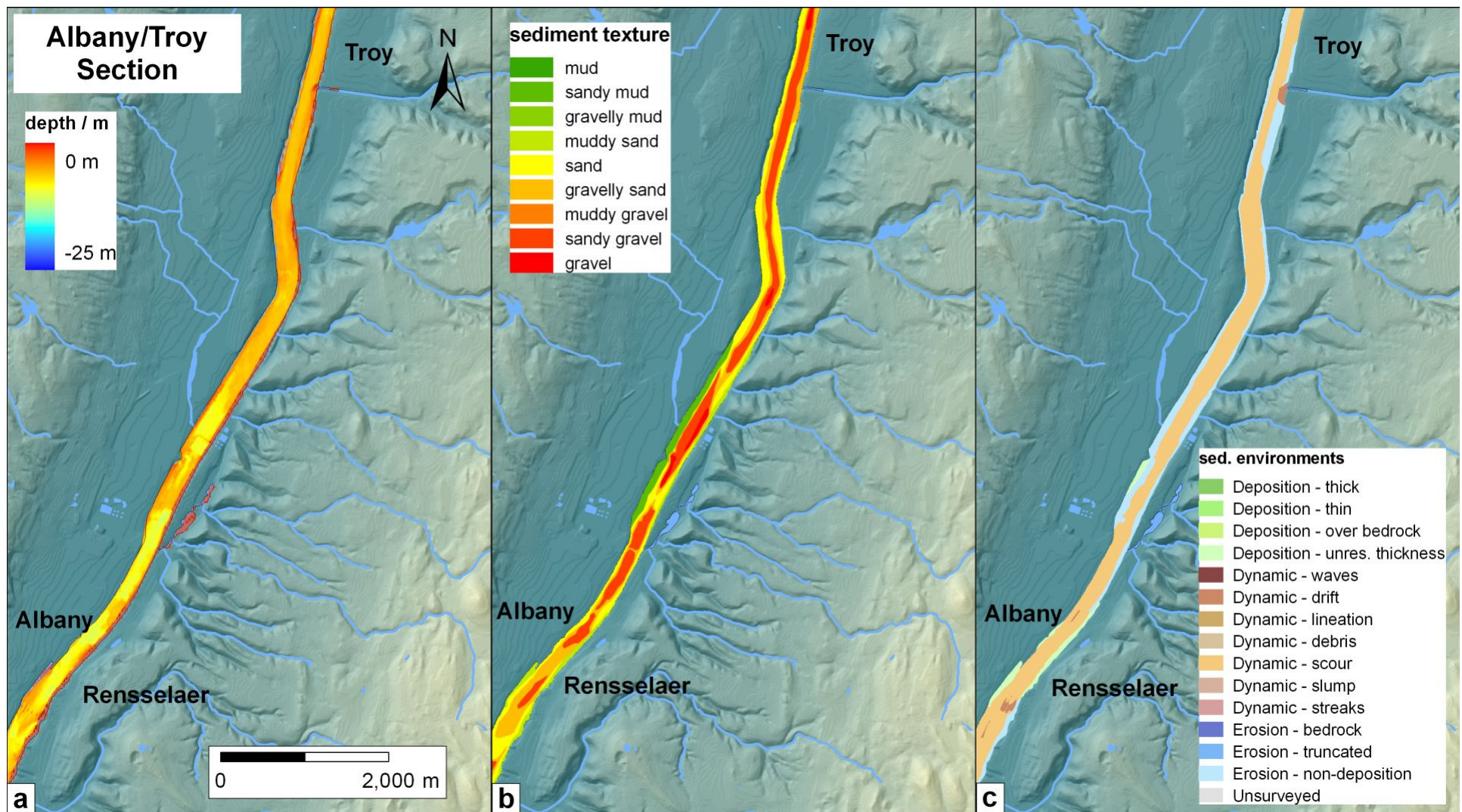
New York State Dept of Environmental Conservation

By Frank Nitsche, Columbia University

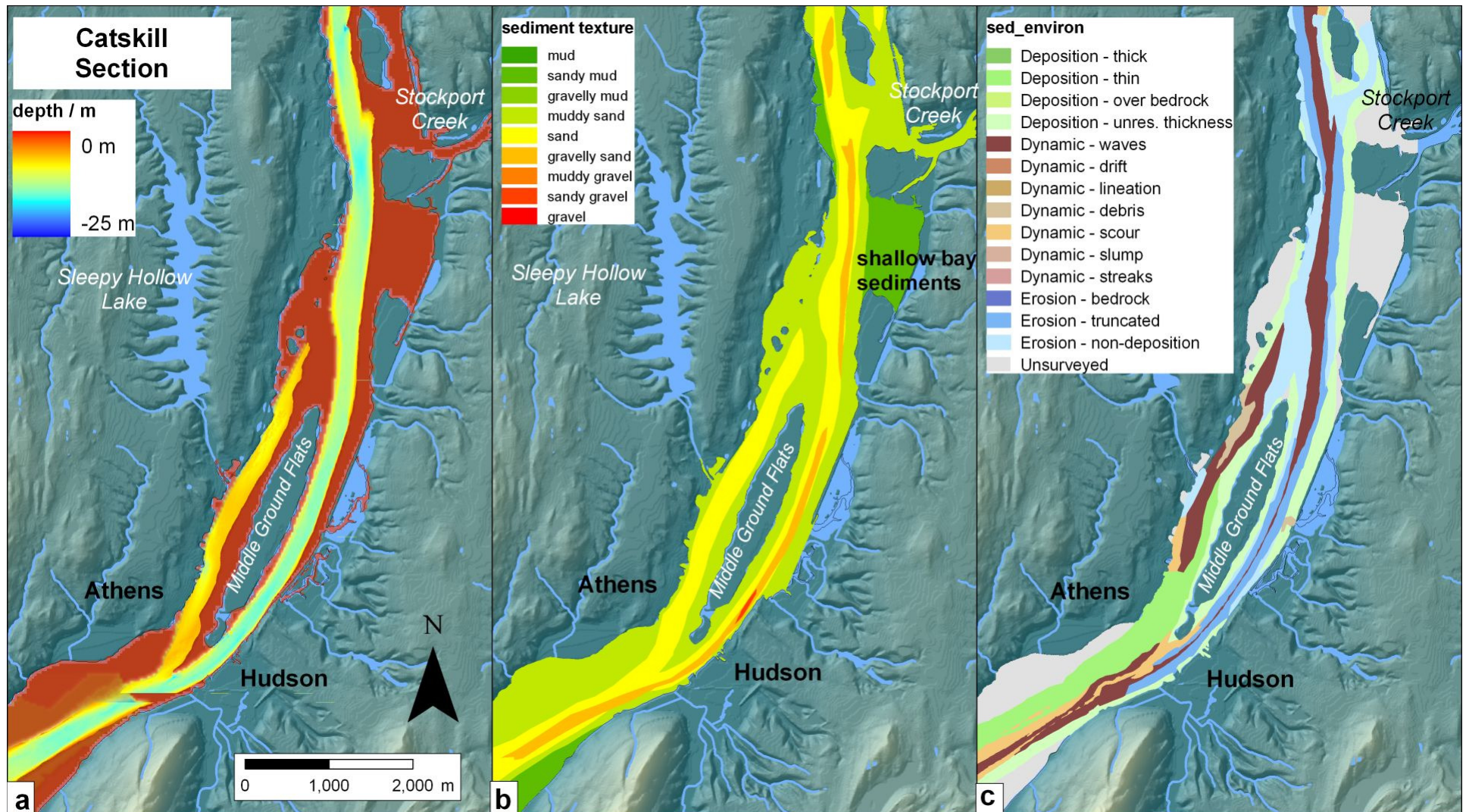
With funds from the New York State Environmental Protection Fund

2007

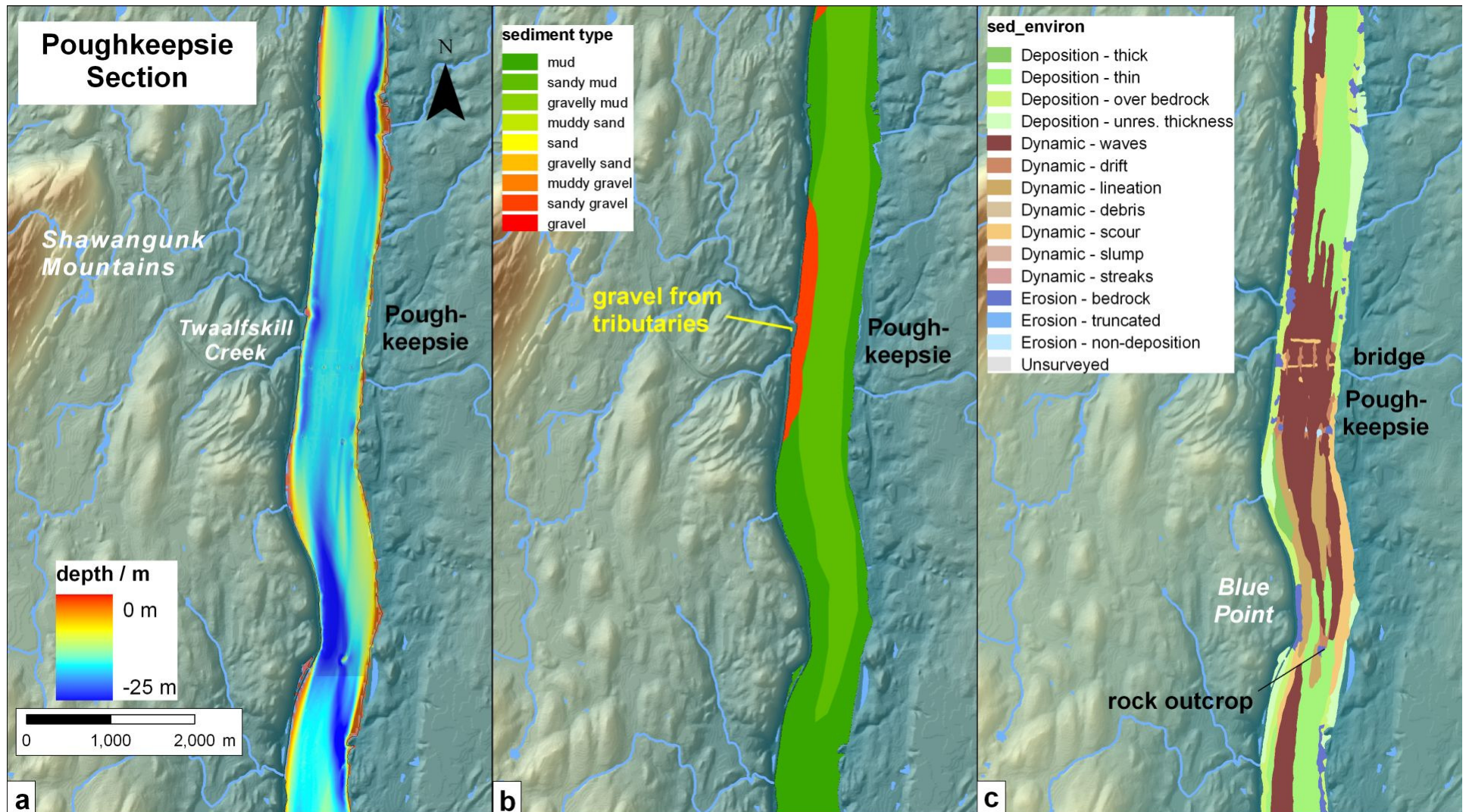




Section 1 Bathymetry, grain size, and sediment environment in the Albany/Troy section of the estuary. Background is 10-meter digital elevation model (DEM) topography provided US Geological Survey (<http://nationalmap.gov/elevation.html> or <http://datagateway.nrcs.usda.gov/>). Figure provided courtesy of Frank Nitsche, Columbia University. See Nitsche, F.O., W.B.F. Ryan, S.M. Carbotte, R.E. Bell, A. Slagle, C. Bertinardo, R. Flood, T. Kenna, C. McHugh, 2007, Regional patterns and local variations of sediment distribution in the Hudson River Estuary, *Estuarine, Coastal and Shelf Science*, 71, 259-277 for a discussion of these maps.



Section 2 Bathymetry, grain size, and sediment environment in the Catskill section of the estuary. Background is 10-meter digital elevation model (DEM) topography provided US Geological Survey (<http://nationalmap.gov/elevation.html> or <http://datagateway.nrcs.usda.gov/>). Figure provided courtesy of Frank Nitsche, Columbia University. See Nitsche, F.O., W.B.F. Ryan, S.M. Carbotte, R.E. Bell, A. Slagle, C. Bertinardo, R. Flood, T. Kenna, C. McHugh, 2007, Regional patterns and local variations of sediment distribution in the Hudson River Estuary, *Estuarine, Coastal and Shelf Science*, 71, 259-277 for a discussion of these maps.



Section 3 Bathymetry, grain size, and sediment environment in the Poughkeepsie section of the estuary. Background is 10-meter digital elevation model (DEM) topography provided US Geological Survey (<http://nationalmap.gov/elevation.html> or <http://datagateway.nrcs.usda.gov/>). Figure provided courtesy of Frank Nitsche, Columbia University. See Nitsche, F.O., W.B.F. Ryan, S.M. Carbotte, R.E. Bell, A. Slagle, C. Bertinado, R. Flood, T. Kenna, C. McHugh, 2007, Regional patterns and local variations of sediment distribution in the Hudson River Estuary, *Estuarine, Coastal and Shelf Science*, 71, 259-277 for a discussion of these maps.

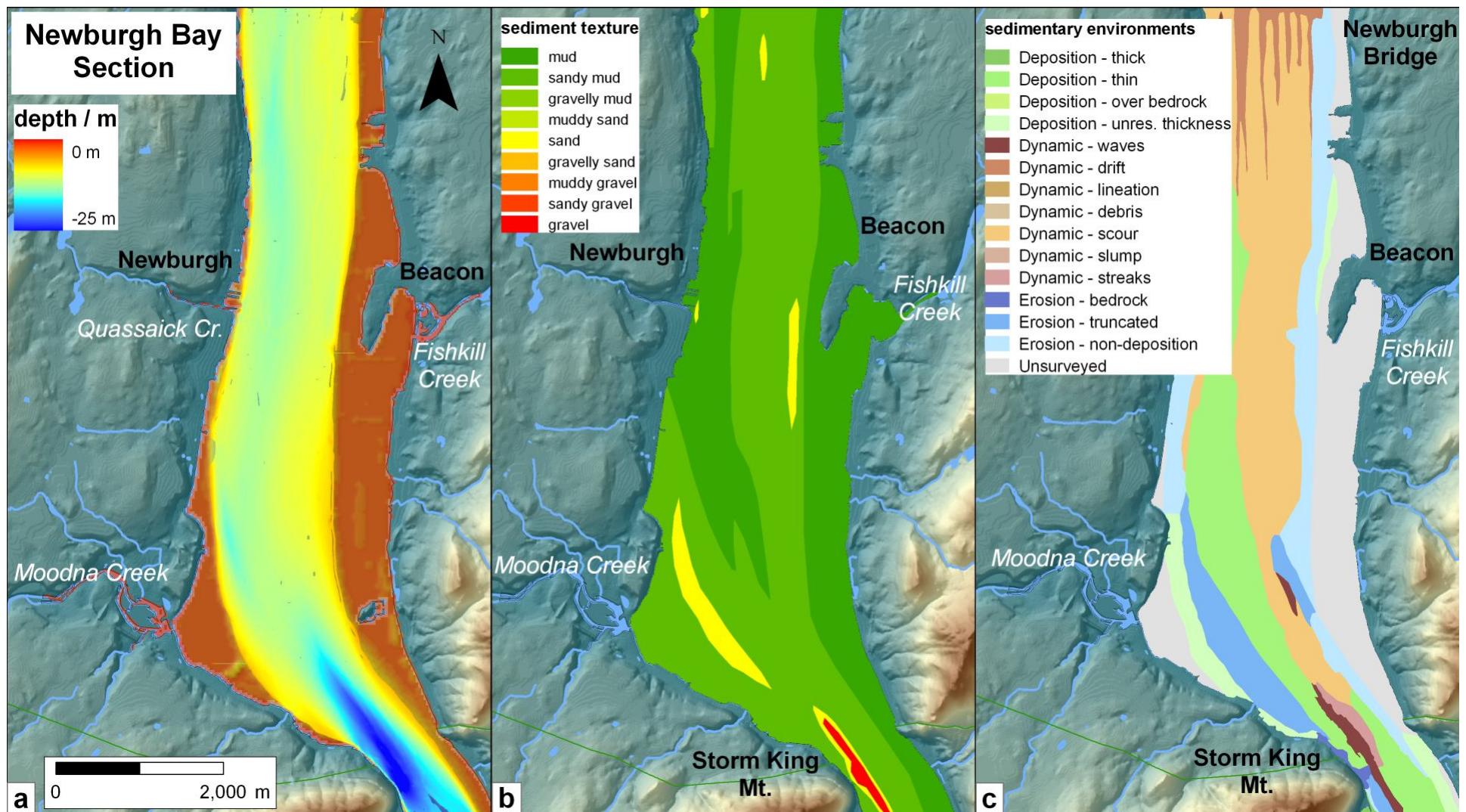
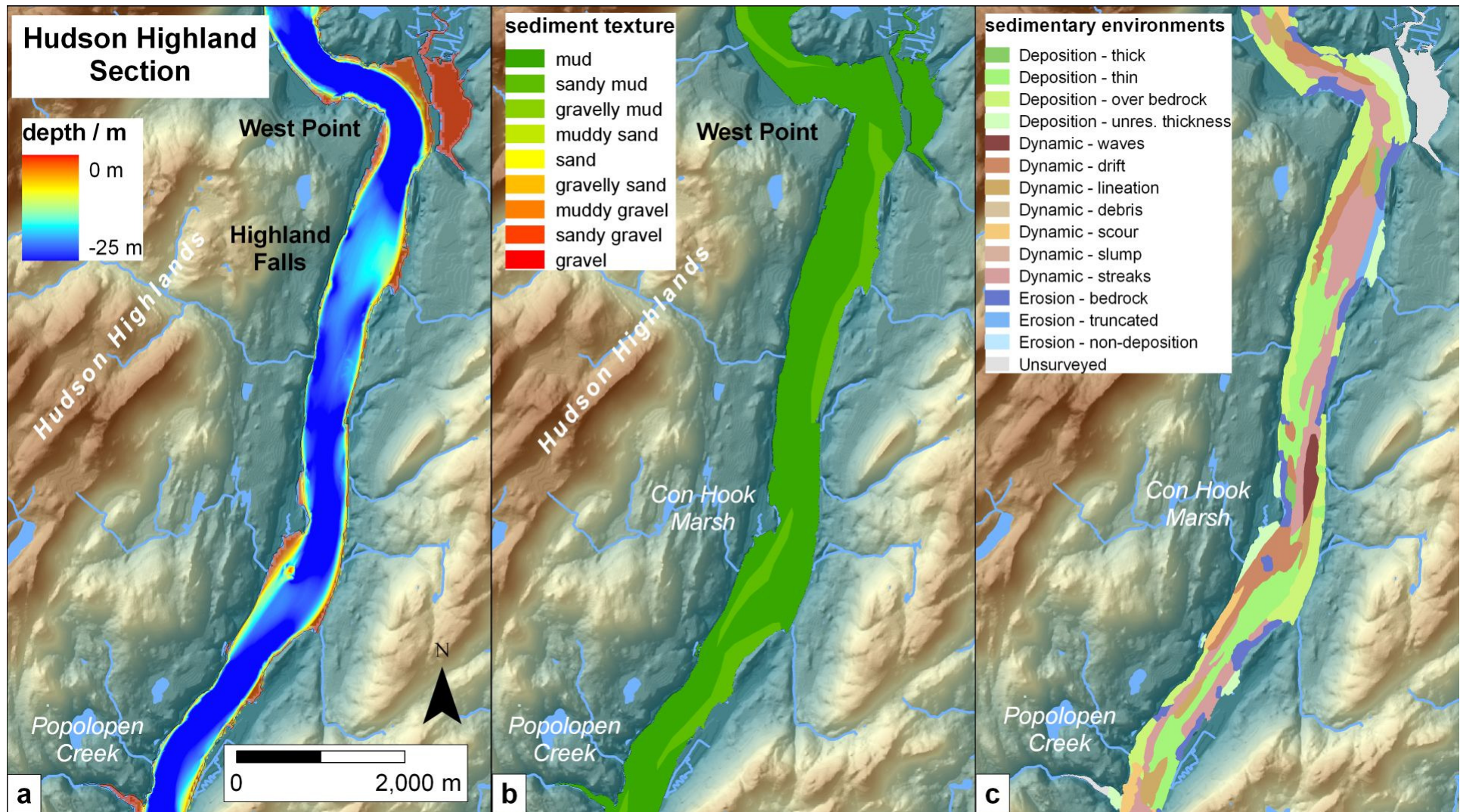
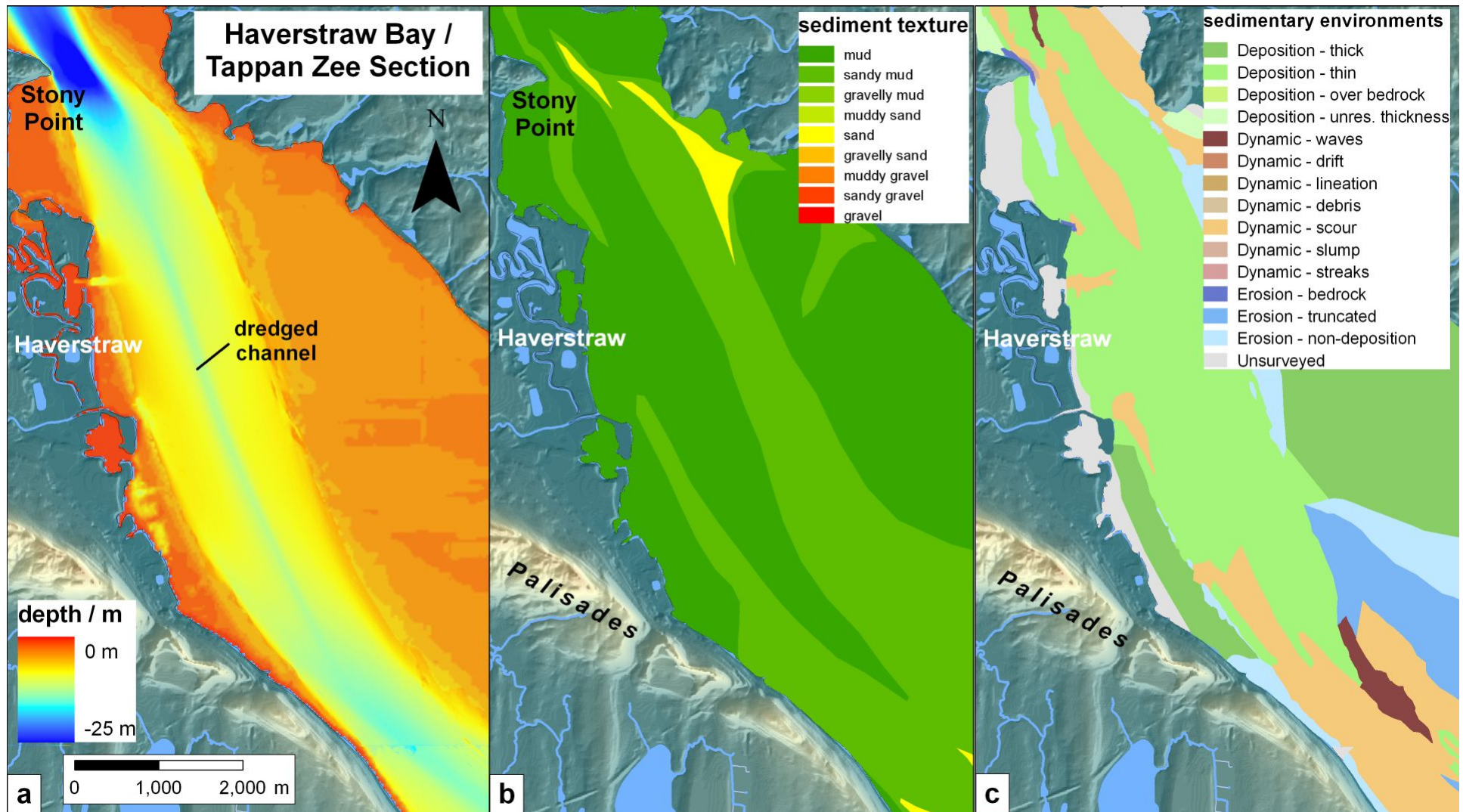


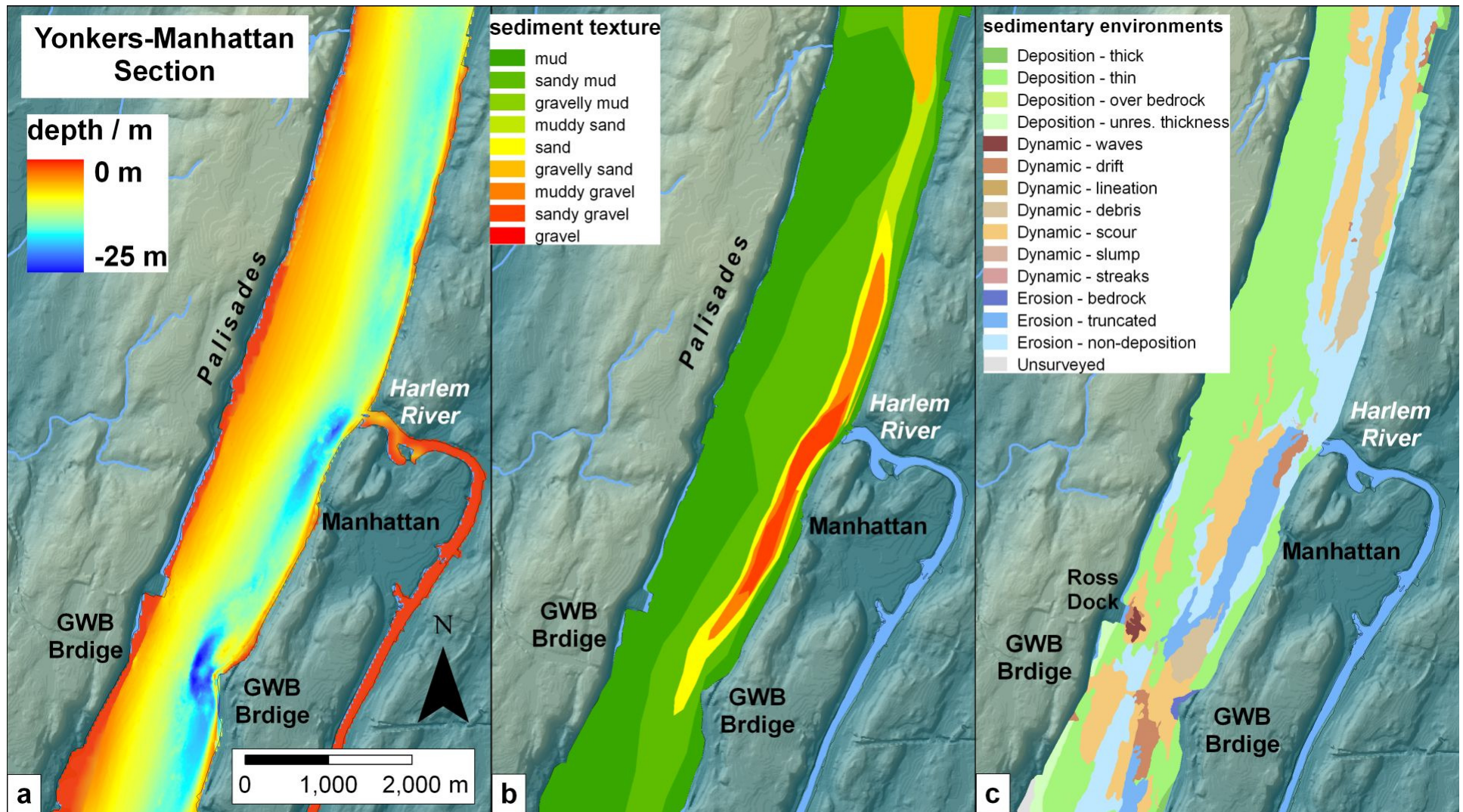
Figure 4 Bathymetry, grain size, and sediment environment in the Newburgh Bay section of the estuary. Background is 10-meter digital elevation model (DEM) topography provided US Geological Survey (<http://nationalmap.gov/elevation.html> or <http://datagateway.nrcs.usda.gov/>). Figure provided courtesy of Frank Nitsche, Columbia University. See Nitsche, F.O., W.B.F. Ryan, S.M. Carbotte, R.E. Bell, A. Slagle, C. Bertinado, R. Flood, T. Kenna, C. McHugh, 2007, Regional patterns and local variations of sediment distribution in the Hudson River Estuary, *Estuarine, Coastal and Shelf Science*, 71, 259-277 for a discussion of these maps.



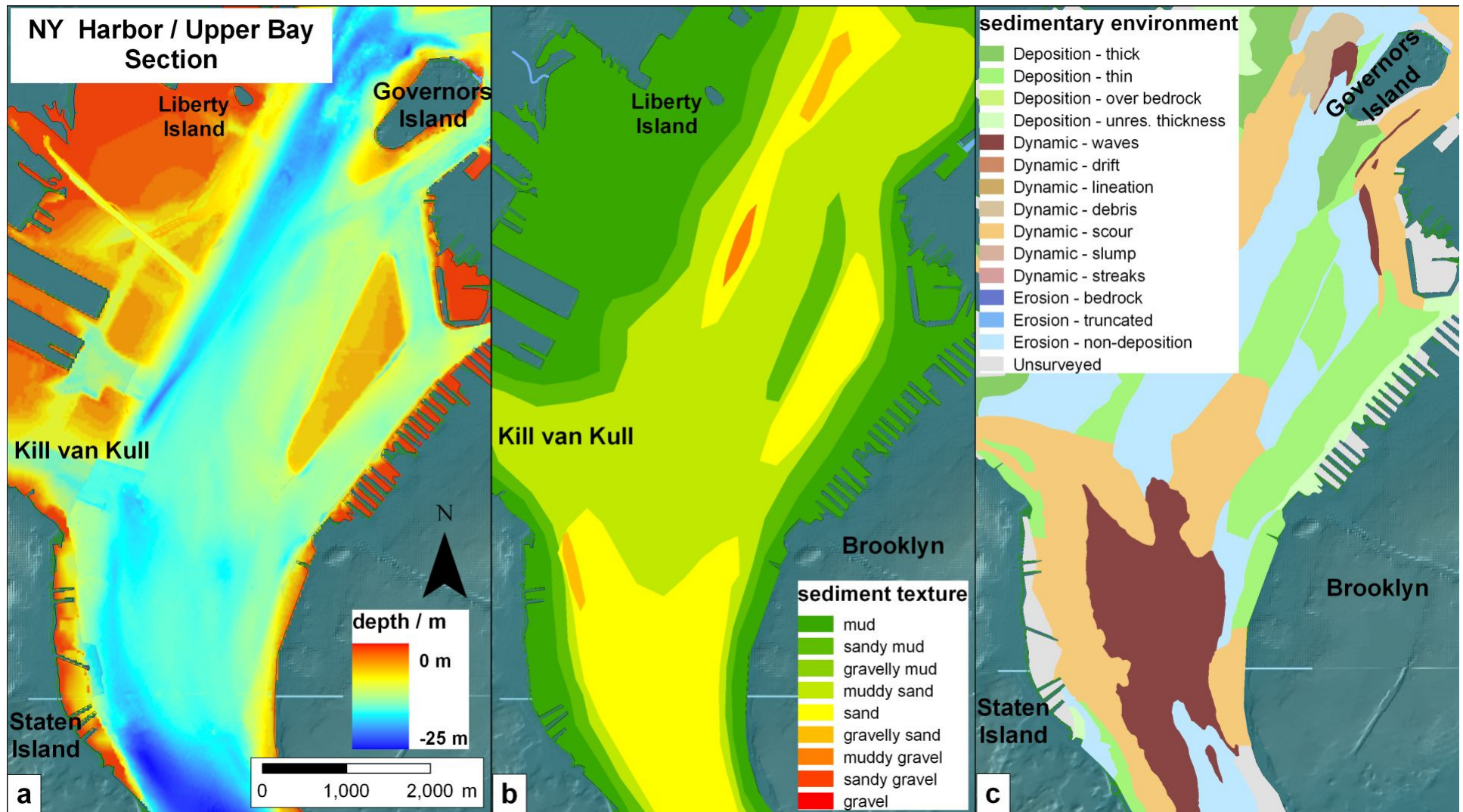
Section 5 Bathymetry, grain size, and sediment environment in the Hudson Highlands section of the estuary. Background is 10-meter digital elevation model (DEM) topography provided US Geological Survey (<http://nationalmap.gov/elevation.html> or <http://datagateway.nrcs.usda.gov/>). Figure provided courtesy of Frank Nitsche, Columbia University. See Nitsche, F.O., W.B.F. Ryan, S.M. Carbotte, R.E. Bell, A. Slagle, C. Bertinado, R. Flood, T. Kenna, C. McHugh, 2007, Regional patterns and local variations of sediment distribution in the Hudson River Estuary, *Estuarine, Coastal and Shelf Science*, 71, 259-277 for a discussion of these maps.



Section 6 Bathymetry, grain size, and sediment environment in the Haverstraw Bay/Tappan Zee section of the estuary. Background is 10-meter digital elevation model (DEM) topography provided US Geological Survey (<http://nationalmap.gov/elevation.html> or <http://datagateway.nrcs.usda.gov/>). Figure provided courtesy of Frank Nitsche, Columbia University. See Nitsche, F.O., W.B.F. Ryan, S.M. Carbotte, R.E. Bell, A. Slagle, C. Bertinado, R. Flood, T. Kenna, C. McHugh, 2007, Regional patterns and local variations of sediment distribution in the Hudson River Estuary, *Estuarine, Coastal and Shelf Science*, 71, 259-277 for a discussion of these maps.



Section 7 Bathymetry, grain size, and sediment environment in the Yonkers-Manhattan section of the estuary. Background is 10-meter digital elevation model (DEM) topography provided US Geological Survey (<http://nationalmap.gov/elevation.html> or <http://datagateway.nrcs.usda.gov/>). Figure provided courtesy of Frank Nitsche, Columbia University.



Section 8 Bathymetry, grain size, and sediment environment in the New York Harbor/Upper Bay section of the estuary. Background is 10-meter digital elevation model (DEM) topography provided US Geological Survey (<http://nationalmap.gov/elevation.html> or <http://datagateway.nrcs.usda.gov/>). Figure provided courtesy of Frank Nitsche, Columbia University. See Nitsche, F.O., W.B.F. Ryan, S.M. Carbotte, R.E. Bell, A. Slagle, C. Bertinado, R. Flood, T. Kenna, C. McHugh, 2007, Regional patterns and local variations of sediment distribution in the Hudson River Estuary, *Estuarine, Coastal and Shelf Science*, 71, 259-277 for a discussion of these maps.