



BH-98-08 (19 ft. bgs.) CONC.	
BTEX	552000
PAHs	3561000

Tar Well (15 ft. bgs.) CONC.	
TCLP Ben.	260000
BTEX	3230000
PAHs	3818000

BH-97-02 (13.2 ft. bgs.) CONC.	
BTEX	16
PAHs	400
Cyanide	ND

TP-97-26 (5.5 ft. bgs.) CONC.	
BTEX	ND
PAHs	ND
Cyanide	1800
W.A.D. CN	ND

BH-97-01 (10.4 ft. bgs.) CONC.	
BTEX	ND
PAHs	5789000
Cyanide	2000J
W.A.D. CN	ND

TP-97-24 (6.5 ft. bgs.) CONC.	
BTEX	ND
PAHs	40480
Cyanide	5400
W.A.D. CN	ND

TP-97-14 (6.0 ft. bgs.) CONC.	
BTEX	244800
PAHs	7426000
Cyanide	1500
W.A.D. CN	ND

TP-97-13F (3.3 ft. bgs.) CONC.	
TCLP Ben.	380
BTEX	217800
PAHs	1961900
Cyanide	ND

TP-97-17 (2.0 ft. bgs.) CONC.	
BTEX	60400
PAHs	9767000
Cyanide	ND

TP-99-31 (8.0 ft. bgs.) CONC.	
BTEX	1800
PAHs	664
Cyanide	ND
W.A.D. CN	NA

TP-99-28A (10.0 ft. bgs.) CONC.	
BTEX	57
PAHs	8080
Cyanide	ND
W.A.D. CN	NA

TP-97-12 (7.0 ft. bgs.) CONC.	
BTEX	100000
PAHs	7861000
Cyanide	ND
W.A.D. CN	NA

GP-99-16 (2.0 ft. bgs.) CONC.	
BTEX	8
PAHs	ND
Cyanide	ND
W.A.D. CN	NA

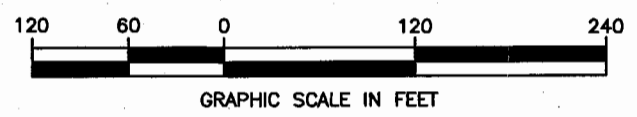
TP-99-28 (7.5 ft. bgs.) CONC.	
BTEX	9
PAHs	10020
Cyanide	ND
W.A.D. CN	NA

GP-99-02 (1.0-1.5 ft. bgs.) CONC.	
BTEX	13000
PAHs	3817900
Cyanide	ND
W.A.D. CN	NA

LEGEND

- PROPERTY LINE
- HISTORIC STRUCTURE
- MANHOLE
- 1997 TEST BORING LOCATION
- 1998 TEST BORING LOCATION
- 1997 MONITORING WELL LOCATION
- 1998 MONITORING WELL LOCATION
- 1997 TEST PIT LOCATION
- 1999 TEST PIT LOCATION
- 1999 GEOPROBE SAMPLE LOCATION
- ANALYTE CONCENTRATIONS EXCEED RSCOs

NOTES:
 NA-NO DATA GENERATED
 ND-NOT DETECTED
 J-ESTIMATED VALUE

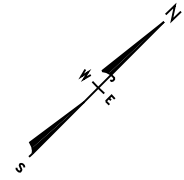


GEI Consultants, Inc.

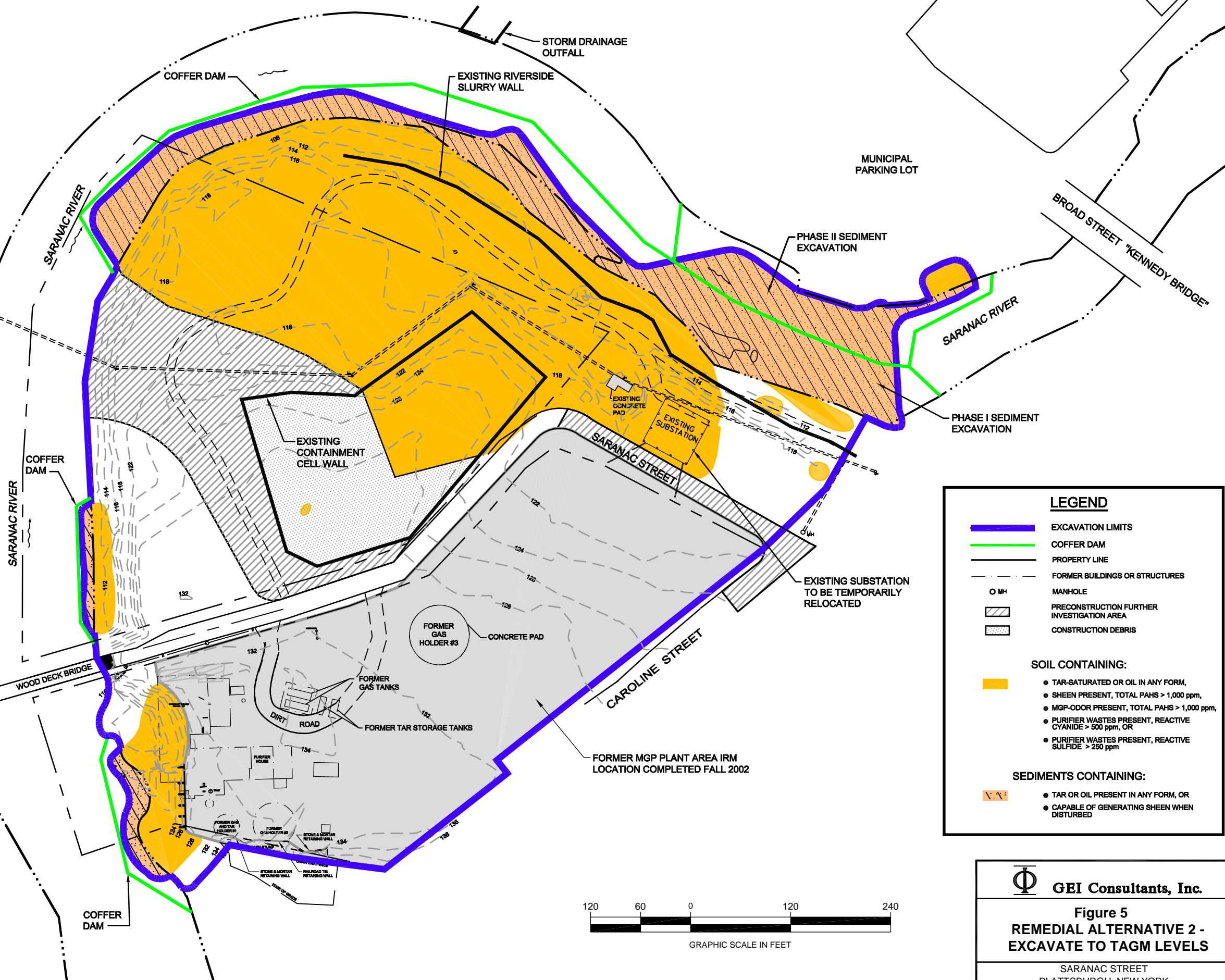
FIGURE 4

ANALYTICAL RESULTS (ppb) FOR SUBSURFACE-SOIL SAMPLES

SARANAC STREET SITE
 PLATTSBURGH, NEW YORK



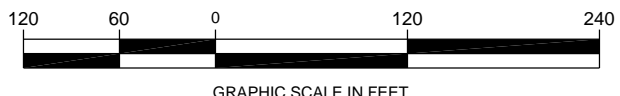
EXISTING SANITARY SEWER TO BE TEMPORARILY RELOCATED AND RECONSTRUCTED



LEGEND

- EXCAVATION LIMITS
 - COFFER DAM
 - PROPERTY LINE
 - FORMER BUILDINGS OR STRUCTURES
 - MANHOLE
 - PRECONSTRUCTION FURTHER INVESTIGATION AREA
 - CONSTRUCTION DEBRIS
- SOIL CONTAINING:**
- TAR-SATURATED OR OIL IN ANY FORM,
 - SHEEN PRESENT, TOTAL PAHS > 1,000 ppm,
 - MGP-ODOR PRESENT, TOTAL PAHS > 1,000 ppm,
 - PURIFIER WASTES PRESENT, REACTIVE CYANIDE > 500 ppm, OR
 - PURIFIER WASTES PRESENT, REACTIVE SULFIDE > 250 ppm
- SEDIMENTS CONTAINING:**
- TAR OR OIL PRESENT IN ANY FORM, OR
 - CAPABLE OF GENERATING SHEEN WHEN DISTURBED

NOTES:
 1. PHYSICAL DESCRIPTIONS OF IMPACTS IN AREAS BETWEEN INVESTIGATION POINTS WAS INTERPOLATED BASED ON CONSTRUCTABILITY ISSUES AND GEI'S EXPERIENCE OF LIKELY CONTAMINANT DISTRIBUTION.



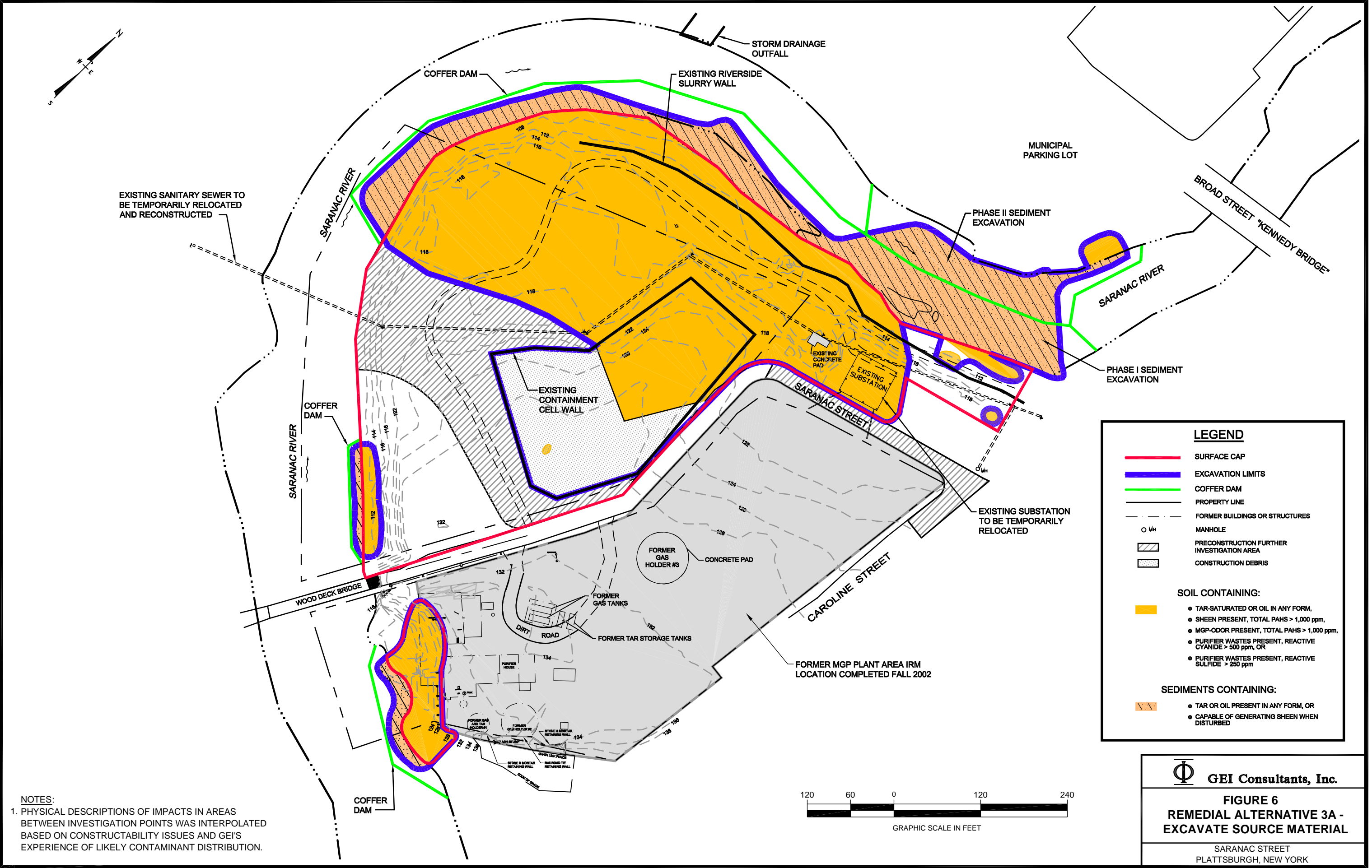
GEI Consultants, Inc.

**Figure 5
 REMEDIAL ALTERNATIVE 2 -
 EXCAVATE TO TAGM LEVELS**

SARANAC STREET
 PLATTSBURGH, NEW YORK

NYSEG/PLATT/97/3340/1005/FSFS-0503/PLATT REMAINT

NYSEG PLATT/97/3340/1005/FSFS-0503/PLATT REMAINT



NOTES:
 1. PHYSICAL DESCRIPTIONS OF IMPACTS IN AREAS BETWEEN INVESTIGATION POINTS WAS INTERPOLATED BASED ON CONSTRUCTABILITY ISSUES AND GEI'S EXPERIENCE OF LIKELY CONTAMINANT DISTRIBUTION.

LEGEND

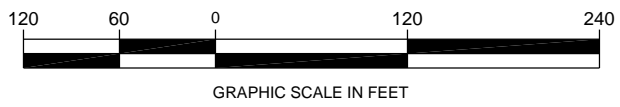
- SURFACE CAP
- EXCAVATION LIMITS
- COFFER DAM
- PROPERTY LINE
- - - FORMER BUILDINGS OR STRUCTURES
- MH MANHOLE
- ▨ PRECONSTRUCTION FURTHER INVESTIGATION AREA
- ▩ CONSTRUCTION DEBRIS

SOIL CONTAINING:

- TAR-SATURATED OR OIL IN ANY FORM,
- SHEEN PRESENT, TOTAL PAHS > 1,000 ppm,
- MGP-ODOR PRESENT, TOTAL PAHS > 1,000 ppm,
- PURIFIER WASTES PRESENT, REACTIVE CYANIDE > 500 ppm, OR
- PURIFIER WASTES PRESENT, REACTIVE SULFIDE > 250 ppm

SEDIMENTS CONTAINING:

- TAR OR OIL PRESENT IN ANY FORM, OR
- CAPABLE OF GENERATING SHEEN WHEN DISTURBED



GEI Consultants, Inc.
FIGURE 6
REMEDIAL ALTERNATIVE 3A -
EXCAVATE SOURCE MATERIAL
 SARANAC STREET
 PLATTSBURGH, NEW YORK