



Department of  
Environmental  
Conservation

# Former Geneva Foundry Off-Site Air Deposition Area Remedial Progress Update

Site No. C835027A

March 27, 2018

# Project Team

## NYSDEC

Dave Chiusano

Mike Cruden, P.E.



## NYSDOH

Anthony Perretta

Justin Deming



## EEEPC

Rick Watt, P.G.

Nicole Cheplowitz, P.E.

Bob Gibson



## LaBella Associates

Dave Engert, CHMM

Jon Heerkens

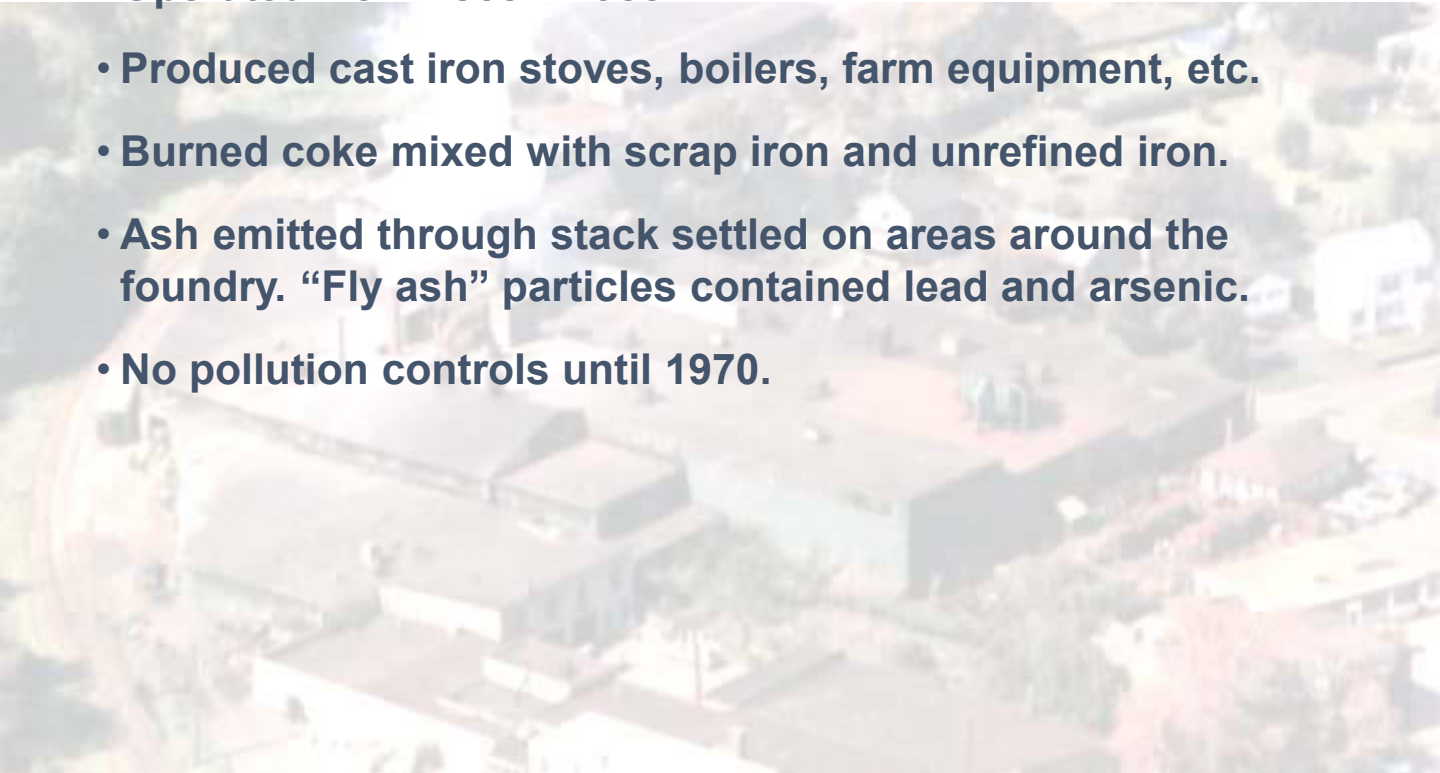


# Former Geneva Foundry (1868-1988)



# Former Geneva Foundry (1868-1988)

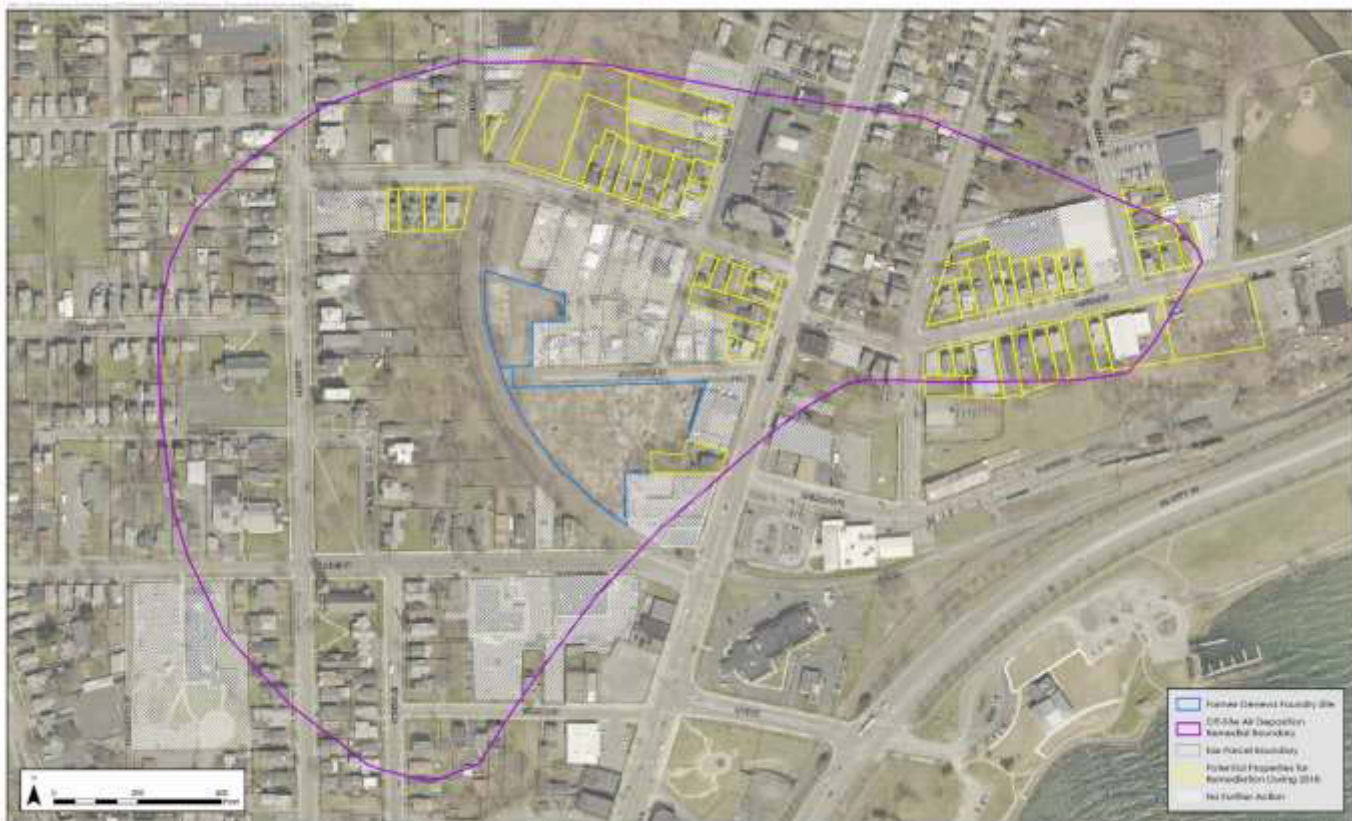
- Operated from 1868 – 1988.
- Produced cast iron stoves, boilers, farm equipment, etc.
- Burned coke mixed with scrap iron and unrefined iron.
- Ash emitted through stack settled on areas around the foundry. “Fly ash” particles contained lead and arsenic.
- No pollution controls until 1970.



# Progress Update – 2017 to Date

- **Work substantially completed for 40 of 243 properties within the remedial boundary.**
  - 21 properties cleaned up during 2017. Final restoration items to be completed in spring 2018.
  - No Further Action letters issued for 19 properties where remediation was determined not to be necessary.
- **Remedial designs in progress for 59 other properties. Approximately 40 of these to be cleaned up in 2018.**
- **Screening (initial) sampling completed at 129 additional properties anticipated for future remedial design.**





**2018 Potential Remedial Properties**  
**Former Geneva Foundry Site – Site No. C835027A**  
 Geneva, Ontario County, New York

# Remedial Design Process

## Engineering contractor: EEEPC

### Pre-design tasks:

- Soil sampling—results provided to owners
- Property survey
- Structural assessment
- Plant and tree inventory

### Engineering design tasks:

- Preliminary excavation plan reviewed by DEC/DOH
- Meeting with property owner
- Final excavation and restoration plan reviewed by DEC and DOH
- Second meeting with owner prior to construction





# Remedial Construction Process

**Prime contractor: LaBella Associates**

**Oversight: EEEPC**

- **Excavation per remedial design plans, following safe practices**
- **Backfill with approved clean fill and topsoil**
- **Restoration of hardscape features (concrete and asphalt)**
- **Installation of sod, sheds, fences, landscaping features and plantings, etc.**
- **Warranty on restoration features**





# What to Expect during Construction

- Typical schedule: Monday to Friday, 7:30 a.m. to 6:00 p.m.
- Dust and vibration monitoring during excavation; use of dust control measures as needed
- Clean loading practices and standard decontamination procedures for project equipment
- Construction noise from equipment such as excavators and small dump trucks
- Vehicles entering and exiting project staging areas on State Street, Middle Street, and Lehigh Avenue
- Occasional temporary road closures; flagman directing traffic as needed

*For more information, please refer to the Community Protection Plan available at the DEC's project website or at the Geneva Public Library*

# Upcoming Spring 2018 Activities

Pre-construction startup activities, including preparation of an additional staging area at 60 Middle Street

Completion of additional property-specific remedial designs, including meetings with owners to review proposed excavation and restoration plans

Completion of landscaping and other restoration items at 2017 construction properties on Jackson, Center, and State streets

Start of a new round of property cleanups including the addition of a second construction crew; one crew to start on Exchange Street and one to start on Middle Street

# Role of DOH



- DOH assists DEC during the investigation to:
- Evaluate the ways in which an individual could be exposed to site-related contaminants.
- Ensure appropriate samples are collected: review of work plan.
- Identify where people are likely to contact contamination.
- Ensure sufficient number of samples are collected to evaluate whether people are coming into contact with site-related contaminants.
- Evaluate the samples so the results provide meaningful information.
- Recommend measures to prevent or minimize any exposures that may occur.



# Role of DOH



**DOH assists DEC during remedial construction activities to:**

Ensure that the remedial actions proposed are protective of public health by eliminating pre-remediation exposure pathways and preventing potential exposure pathways in the future.



# Practical Measures to Reduce Potential Exposure

In the interim, there are things people can do if they are concerned that site-related contaminants may be present on their property:

- Minimize direct and repeated contact with soils. Avoid unnecessary digging.
- Use doormats and periodic damp mopping of floors to remove soil that might be tracked indoors.
- Wear gloves when working in the garden and avoid bringing soil inside the house by brushing off your clothes and removing shoes and gloves.
- Consider growing vegetables in raised beds – use untreated wood to make the beds.
- Wash hands with soap and water after outdoor activities/gardening.
- Maintain a grass or mulch cover.



# Keep Informed

1. Visit DEC's Geneva Foundry Website:  
<http://www.dec.ny.gov/chemical/107812.html>
2. Receive Fact Sheets by Email: Sign up for Ontario County Listserv:  
<http://www.dec.ny.gov/chemical/61092.html>
3. City of Geneva Website:  
<http://cityofgenevany.com/blog-post/foundry-information/>
4. Read Reports at Geneva Public Library

# Thank You

Connect with us

Facebook:

[www.facebook.com/NYSDEC](http://www.facebook.com/NYSDEC)

Twitter:

[twitter.com/NYSDEC](https://twitter.com/NYSDEC)

Flickr:

[www.flickr.com/photos/nysdec](http://www.flickr.com/photos/nysdec)



Department of  
Environmental  
Conservation

