



FACT SHEET

State Superfund Program

Receive Site Fact Sheets by *Email*. See "For More Information" to Learn How.

Site Name: Al Tech Specialty Steel Corporation
DEC Site #: 907022 Operable Unit 02A *
Address: Willowbrook Avenue; Dunkirk, New York 14048
Website: <http://www.dec.ny.gov/chemical/80553.html>

Have questions?
See
"Who to Contact"
Below

Interim Remedial Measure Completed at State Superfund Site Construction Completion Report Approved

An Interim Remedial Measure (IRM) has been completed to address the contamination related to a portion of the Al Tech Specialty Steel Corporation site ("site") located at Willowbrook Avenue, Dunkirk, Chautauqua County under New York's State Superfund Program. An IRM is a discrete set of planned actions for both emergency and non-emergency situations that can be conducted without the extensive investigation and evaluation of a Remedial Investigation/Feasibility Study. Please see the map for the site location. The Construction Completion Report states that cleanup requirements have been achieved to fully protect public health and the environment for the proposed site use.

The IRM was performed by NYS Department of Environmental Conservation (DEC). The approved Construction Completion Report will be made available to the public (see "Where to Find Information" below). Once all operable units (OU) of this site have been cleaned up, DEC will reclassify or delist the site from the Registry of Inactive Hazardous Waste Disposal Sites.

Highlights of the Site Cleanup

The goal of the IRM was to achieve cleanup levels that protect public health and the environment. The IRM for OU2A at the site primarily included: 1) dewatering of Willowbrook Pond; 2) excavation and off-site disposal of polychlorinated biphenyl (PCB) impacted pond sediment and soil; 3) partial backfilling of the pond; and 4) grading for proper surface drainage. This IRM cost approximately \$3.5 million and was funded by DEC through the State's Superfund program.

Background

Location:

The former AlTech Specialty Steel Corp. (AlTech) is an approximately 90 acre industrial site in the City of Dunkirk, Chautauqua County. Located north of Willowbrook Avenue, south of Lucas Avenue, east of Brigham Road the site is surrounded by mixed residential/commercial parcels including, single family residential, a lumber supply center, a municipal garage and the Dunkirk High School athletic fields.

Site Features:

The site contains a mixture of active, inactive and abandoned buildings, as well as open land. Separated into two distinct areas bisected by a rail line, the active portion of the site is partially fenced and consists mainly of the active Brigham Road Plant and the Bar Finish and Storage Facility. A small portion of the Brigham Road Plant included an unused former pickling room. Open land at the site includes maintained lawns and unmaintained former fill and disposal areas that have vegetated with opportunistic grasses, brush and tree species.

**Operable Unit:* An administrative term used to identify a portion of a site that can be addressed by a distinct investigation and/or cleanup approach. An operable unit can receive specific investigation, and a particular remedy may be proposed.

An approximately 1.65 acre man-made cooling pond known as Willowbrook Pond is located in the southwest corner of the site. A tributary to Crooked Brook flows southeast to northwest toward Lake Erie through two culverts under the southwest corner of the site.

North of the main facilities separated from the active area by a rail line is the former Lucas Avenue Plant (LAP.) The LAP is a one-story, approximately 178,000-square-foot former manufacturing facility located on the south side of the west end of Lucas Avenue. Situated on a rectangular parcel of land 2,025' by 200' the LAP was constructed in 1909, with additions constructed in 1920, 1936, 1940 and 1968.

The LAP is bordered by Lucas Avenue to the north, beyond which is a residential neighborhood and public school. Brigham Road borders the west and a City of Dunkirk Department of Public Works (DPW) building to the east.

The AlTech site is divided into three OUs:

OU-1 Lucas Avenue Plant : OU-1 includes the building and the property owned by RealCo identified as SBL 96.01-3-1 situated north of the railway parallel to Lucas Avenue.

OU-2 Willowbrook Pond : This includes that area identified by property tax map section/block/lot (SBL) Number 96.10-1-1 owned by RealCo; a portion of the property known as the Brigham Road Plant, identified by SBL Number 96.06-3-79, owned by Dunkirk Acquisition LLC; and the off-site extent of the impacted Tributary of Crooked Brook to the west of the site, identified by various SBLs and owners.

OU-3 The AlTech Plant : This includes all the property in the main facility area identified by SBL Numbers 96.06-3-78 and 96.06-3-77, both owned by Dunkirk Acquisition LLC.

Current Zoning and Land Use:

Current zoning is industrial. Since 2002, Dunkirk Acquisition, LLC d.b.a. Dunkirk Specialty Steel, has operated a large portion of the site as a steel and stainless steel processing facility.

Past Use of the Site:

Industrial use of the site has included the manufacture of iron and steel dating back to 1908. Foundry operations gave way to forging and finishing of stainless steel rod and wire from supplied billets.

Experiencing financial difficulties through the late 1990's AlTech Specialty Steel ceased operations in 2001. An asset holding corporation, named RealCo emerged from these difficulties to address environmental issues at the idled facility, including, but not limited to the Lucas Avenue Plant and Willowbrook Pond. During bankruptcy proceedings in 2002 Dunkirk Acquisition, LLC d.b.a. Dunkirk Specialty Steel acquired the assets of the AlTech Site except for the Lucas Avenue Plant, the Brigham Road Pickle Room and the Willowbrook Pond.

Site Geology and Hydrogeology:

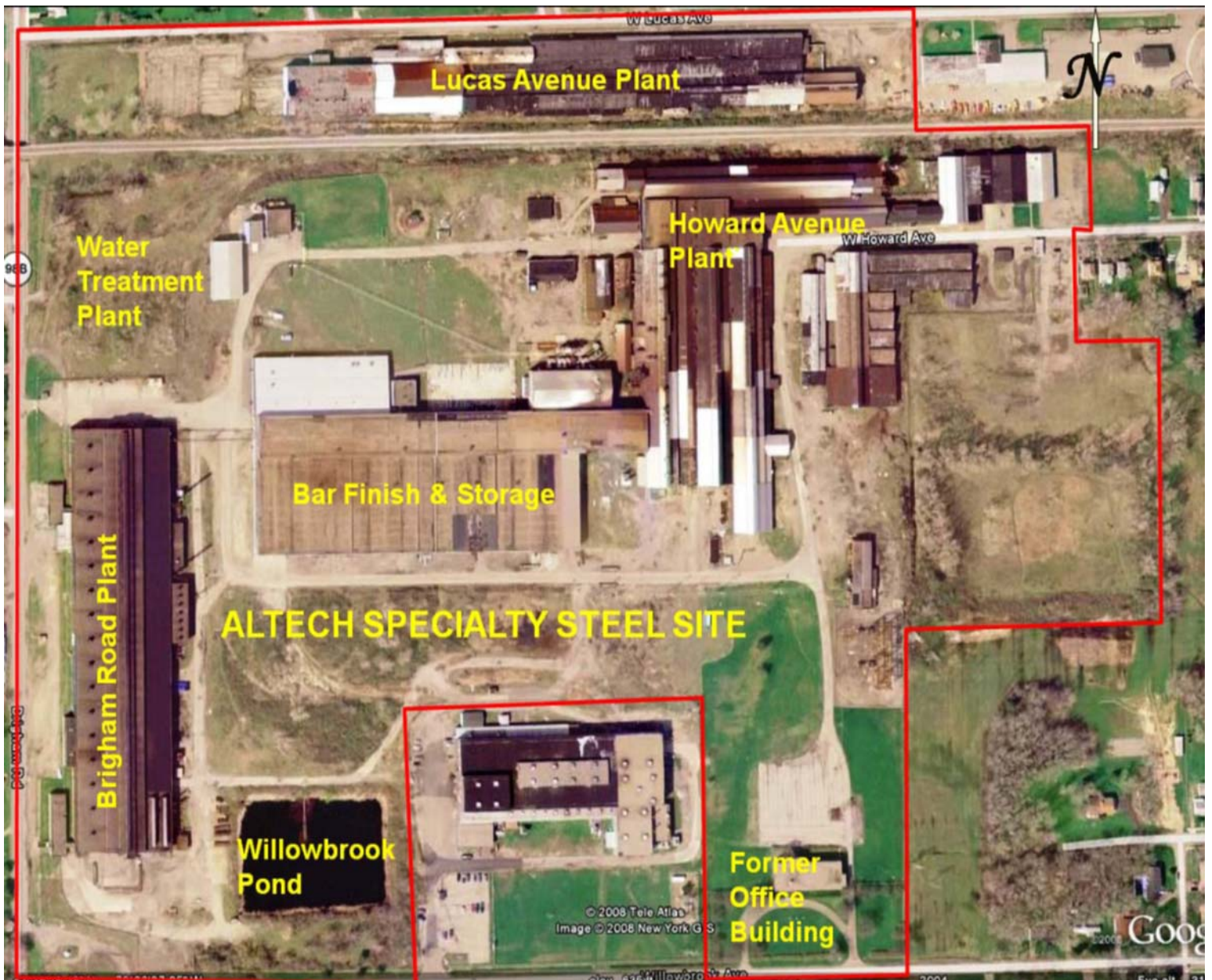
The site is located on broad glacio-lacustrine sedimentary deposits. Soils are tight silty, clayey soils consisting of urban fill over silt loams of the Niagara Silt loam complex. Groundwater is about ten feet below the ground surface and is limited due to the tight nature of the bedrock and soils, however localized ponding can occur. Any groundwater present flows generally to the north toward Lake Erie but is strongly influenced by topographic features and man-made pathways. Bedrock is the Upper Devonian Shales of the Canadaway Group.

Additional site details, including environmental and health assessment summaries, are available on DEC's website at <http://www.dec.ny.gov/chemical/80553.html> and <http://www.dec.ny.gov/cfm/extapps/derexternal/haz/details.cfm?pageid=3&progno=907022>.

State Superfund Program

New York's State Superfund Program (SSF) identifies and characterizes suspected inactive hazardous waste disposal sites. Sites that pose a significant threat to public health and/or the environment go through a process of investigation, evaluation, cleanup and monitoring. DEC attempts to identify parties responsible for site contamination and require cleanup before committing State funds. For more information about the SSF, visit: <http://www.dec.ny.gov/chemical/8439.html>.

Site Location



Where to Find Information

Public interest in this project is valued and appreciated. Project documents are available at the following location to help the public stay informed. You may also view electronic versions of project documents by visiting this brownfield site's website at <http://www.dec.ny.gov/chemical/80553.html> (if available). Large documents may be abbreviated to meet DEC's file size requirements for posting to the website. Hard copies of full project documents are available at the listed locations.

NYS DEC Region 9 Office 270

Michigan Avenue
Buffalo, NY 14203
716-851-7220
(Call for appointment)

Dunkirk Free Library

Attn: Ms. Janice Dekoff
536 Central Avenue
Dunkirk, NY 14048
716-366-2511
dunkirklibrary@gmail.com

Who to Contact

Comments and questions are always welcome and should be directed as follows:

Project Related Questions

Maurice Moore
DEC
Division of Environmental Remediation
270 Michigan Ave
Buffalo, NY 14203-2915
716-851-7220
maurice.moore@dec.ny.gov

Site-Related Health Questions

Matthew Forcucci
New York State Department of Health
584 Delaware Avenue
Buffalo, NY 14202
(716)847-4501
BEEI@health.ny.gov

We encourage you to share this fact sheet with neighbors and tenants, and/or post this fact sheet in a prominent area of your building for others to see.

Receive Site Fact Sheets by Email

Have site information such as this fact sheet sent right to your email inbox. DEC invites you to sign up with one or more contaminated sites county email listservs available at the following web page: <http://www.dec.ny.gov/chemical/61092.html>. It's quick, it's free, and it will help keep you *better informed*.



As a listserv member, you will periodically receive site-related information/announcements for all contaminated sites in the county(ies) you select.

Note: Please disregard if you already have signed up and received this fact sheet electronically.