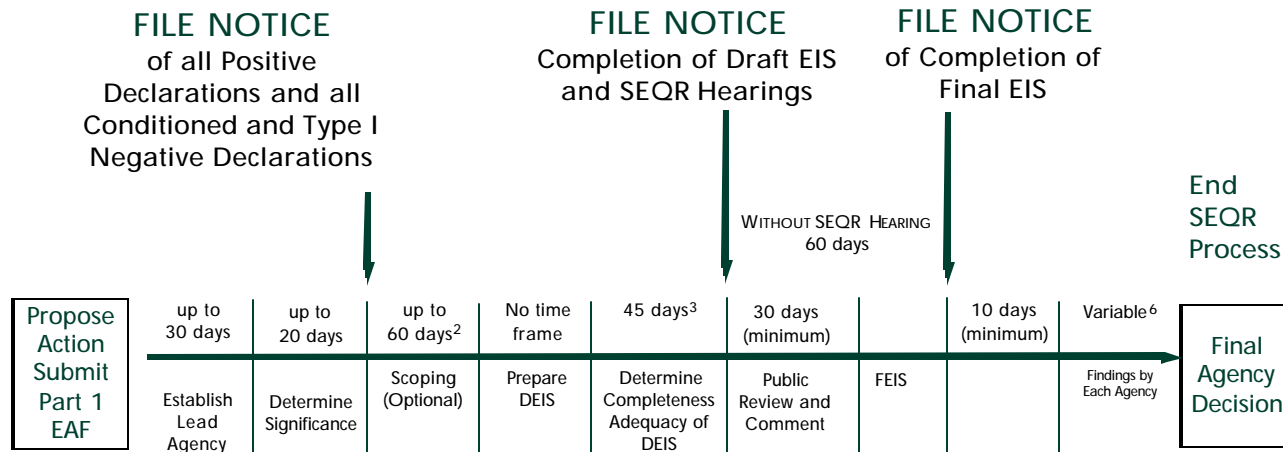
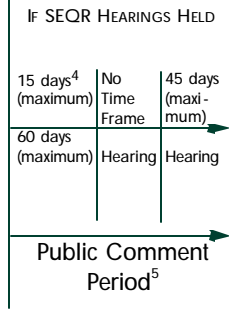


SEQR TIME FRAMES¹



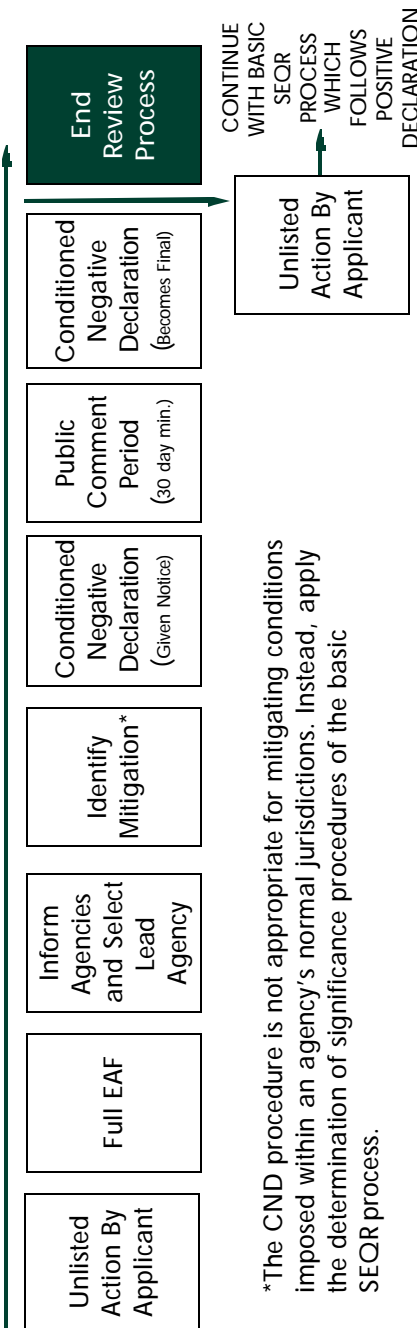
Footnotes

- 1-All time frames may be extended by mutual consent of involved parties.
- 2-Time clock starts with submission of draft scope by applicant
- 3-Thirty days resubmitted DEIS
- 4-Publish hearing in general circulation newspaper at least 14 days before a public hearing. The hearing may commence on the 15th day.
- 5-Public comment must remain open until 10 days after the close of hearing.
- 6-When applicant is involved, lead agency findings and decisions must be made within 30 days of filing the FEIS; otherwise, findings not required until an agency must make a decision on final action.



CONDITIONED NEGATIVE DECLARATION (CND) PROCESS

(Possible only for Unlisted Actions proposed by an applicant)

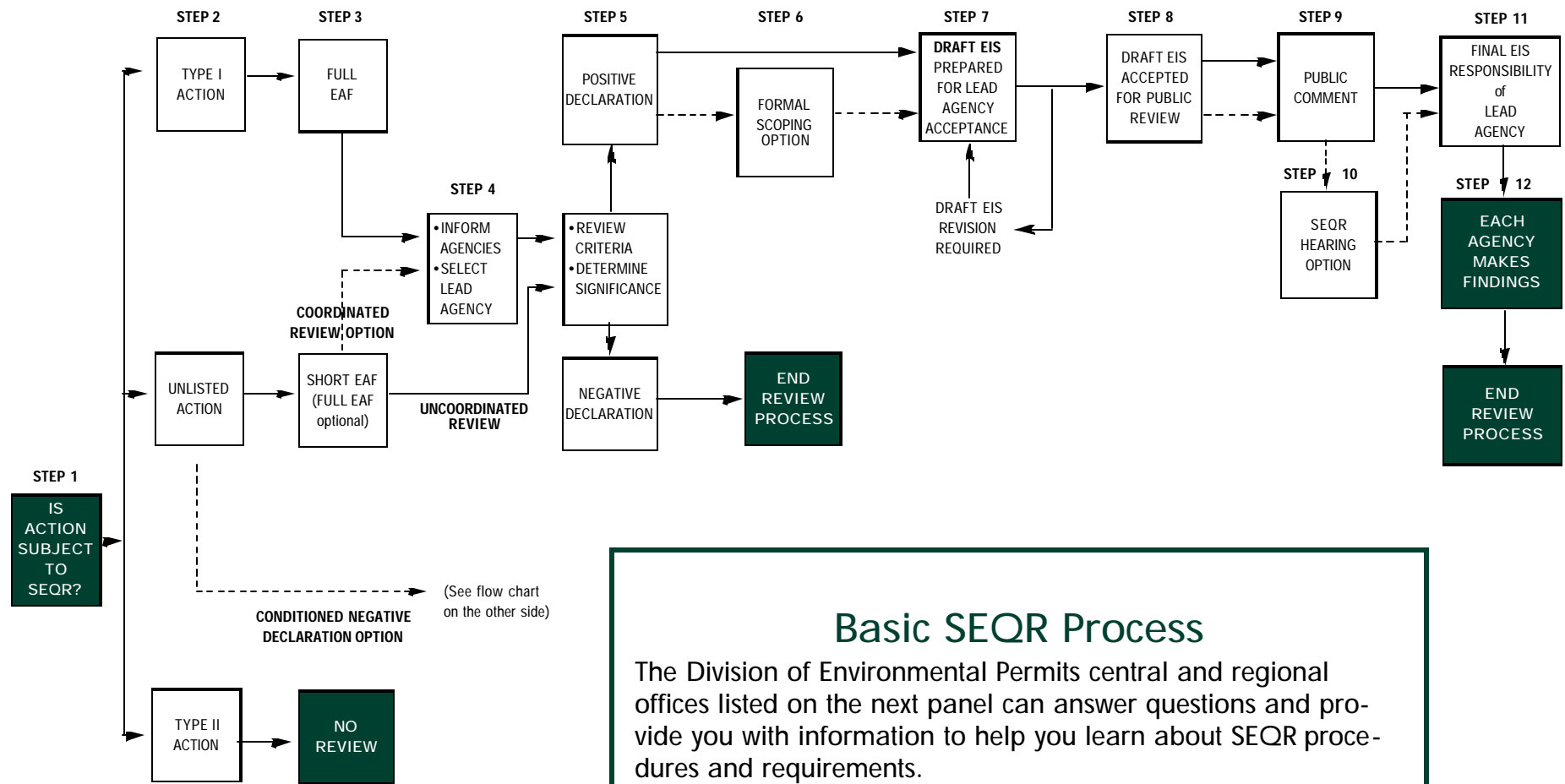


*The CND procedure is not appropriate for mitigating conditions imposed within an agency's normal jurisdictions. Instead, apply the determination of significance procedures of the basic SEQR process.



SEQR FLOW CHART AND TIME FRAMES





Basic SEQR Process

The Division of Environmental Permits central and regional offices listed on the next panel can answer questions and provide you with information to help you learn about SEQR procedures and requirements.

These references are available:

- The statewide SEQR regulations, 6 NYCRR Part 617 (the latest revision effective July 12, 2000)
- The SEQR Cookbook—a step-by-step discussion of the basic SEQR process
- What is SEQR—An introductory brochure
- Applicant’s Guide to SEQR
- Citizen’s Guide to SEQR
- Local Official’s Guide to SEQR
- DEC SEQR website: www.dec.ny.gov/public/357.html

- Region 1 (Nassau, Suffolk counties)
Building 40, SUNY at Stony Brook
Stony Brook, NY 11790-2356 (631) 444-0359
Fax (631) 444-0360
- Region 2 (all of New York City)
One Hunters Point Plaza, 47-40 21st Street
Long Island City, NY 11101-5407 (718) 482-4997
Fax (718) 482-4975
- Region 3 (Dutchess, Orange, Putnam, Rockland, Sullivan, Ulster, Westchester counties)
21 South Putt Corners Road
New Paltz, NY 12561-1696 (845) 256-3054
Fax (845) 255-3042
- Region 4 (Albany, Columbia, Delaware, Greene, Montgomery, Otsego, Rensselaer, Schenectady, Schoharie counties)
1150 North Westcott Road
Schenectady, NY 12306-2014 (518) 357-2069
Fax (518) 357-2460
- Region 5 (Clinton, Essex, Franklin, Fulton, Hamilton, Saratoga, Warren, Washington counties)
Route 86, PO Box 296
Ray Brook, NY 12977-0296 (518) 897-1234
Fax (518) 897-1394
- Region 6 (Herkimer, Jefferson, Lewis, Oneida, St. Lawrence counties)
State Office Building, 317 Washington Street
Watertown, NY 13601-3787 (315) 785-2245
Fax (315) 785-2242
- Region 7 (Broome, Cayuga, Chenango, Cortland, Madison, Onondaga, Oswego, Tioga, Tompkins counties)
615 Erie Boulevard West
Syracuse, NY 13204-2400 (315) 426-7438
Fax (315) 426-7425
- Region 8 (Chemung, Genesee, Livingston, Monroe, Ontario, Orleans, Schuyler, Seneca, Steuben, Wayne, Yates counties)
6274 East Avon-Lima Road
Avon, NY 14414-9519 (585) 226-2466
Fax (585) 226-2830
- Region 9 (Allegany, Cattaraugus, Chautauqua, Erie, Niagara, Wyoming counties)
270 Michigan Avenue
Buffalo, NY 14203-2999 (716) 851-7165
Fax (716) 851-7168
- Central Office, Environmental Permits
625 Broadway 4th Floor
Albany, NY 12233-1750
(518) 402-9167 Fax (518) 402-9168