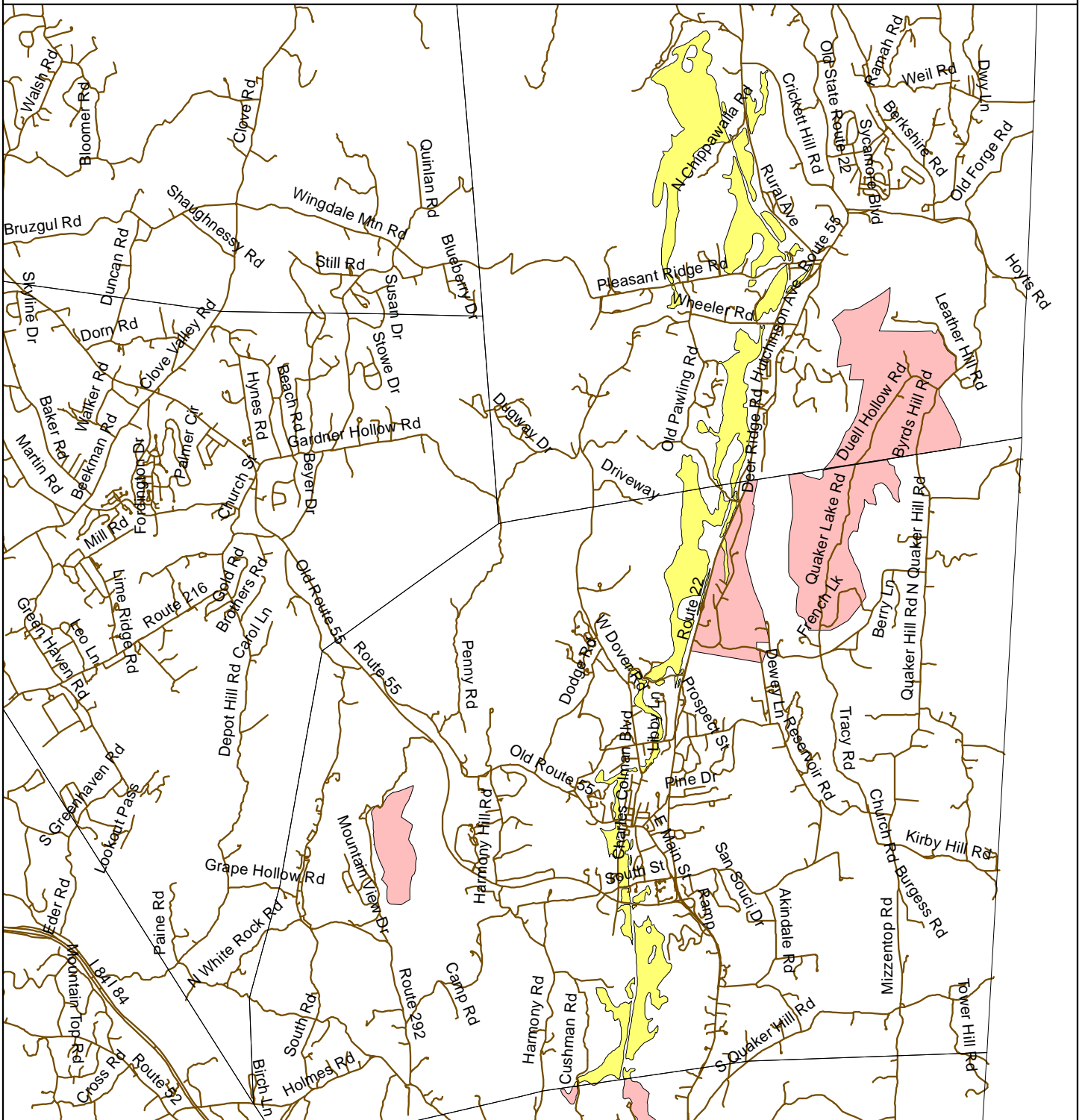


Great Swamp (Towns of Dover, Pawling, & Vil of Pawling) Critical Environmental Area (CEA)

Effective Date of Designation: 2-8-92

Designating Agency: County of Dutchess

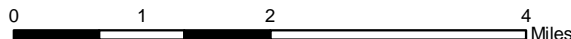


Legend

- Great Swamp CEA
- Adjacent CEA

Base Map: ALIS Roads & Town or City Boundary for New York State

Disclaimer: This map was prepared by the New York State Department of Environmental Conservation using the most current data available. It is deemed accurate but is not guaranteed. NYS DEC is not responsible for any inaccuracies in the data. Please contact the designating authority for additional information regarding legal boundary descriptions.



1 inch equals 1.5 miles

For Adjacent CEAs see map:
 Deuel Hollow Area CEA
 Quaker Lake/Deuel Hollow CEA
 Hurd's Corner CEA
 Little Whaley Lake & Watershed CEA
 Great Swamp of Putnam County CEA

