

Biosolids Management in New York State



June 2011

**New York State Department of Environmental Conservation
Division of Materials Management
625 Broadway
Albany, New York 12233-7253**

Preface

This report is an update to the Division of Solid & Hazardous Materials 2006 edition of "Biosolids Management in New York State." It provides the most current information available concerning biosolids management practices in New York State. The terms "biosolids" and "sewage sludge" are used interchangeably in this report, although under New York State regulations, biosolids means sewage sludge that can be beneficially used.

We would like to thank all chief operators and managers of the wastewater treatment facilities in New York State that responded to our survey questionnaires. The report could not be completed as comprehensively without their assistance.

Any comments or questions about this report may be sent to lylim@gw.dec.state.ny.us.

TABLE OF CONTENTS

	Page
EXECUTIVE SUMMARY	1
BIOSOLIDS MANAGEMENT PRACTICES	4
A. Sources for Information	4
1. Biosolids Survey	4
2. Monitoring and General Information from State Permits	4
3. Sampling and Analysis Conducted by the Department.....	4
B. Basic Information	5
C. Biosolids Management Practices	5
1. Landfilling	7
2. Beneficial Use	9
3. Incineration	13
4. Other	14
TRENDS IN BIOSOLIDS MANAGEMENT	15
BIOSOLIDS CHARACTERISTICS	16
APPENDICES	18
A. New York State Department of Environmental Conservation Regional Offices	A-1
B. 2009/2010 POTW Use/Disposal Information	B-1
C. Selected 2009 Biosolids Metal Data	C-1

LIST OF TABLES

		Page
Table 1	Basic Treatment Methods Employed by POTWs in New York State	6
Table 2	Dewatering Methods Employed by POTWs in New York State	6
Table 3	Current Biosolids Management in New York State – Dry Tons/Year.....	7
Table 4	Landfills Accepting Sewage Sludge in New York State	8
Table 5	Part 360 Permitted Biosolids Beneficial Use Facilities	12
Table 6	Sewage Sludge Incinerators in New York State	14
Table 7	2009 Biosolids Characteristics in New York State – Dry Weight Basis...	17

LIST OF FIGURES

Figure 1	Biosolids Management in New York State – Dry Weight Basis.....	2
Figure 2	Biosolids Management in New York State – Number of POTWs.....	3
Figure 3	Beneficial Use of Biosolids by in New York State – Dry Weight Basis...	10
Figure 4	Beneficial Use of Biosolids in New York State - Number of POTWs.....	11
Figure 5	Changes in Biosolids Management in New York State (% Dry Weight)	15
Figure 6	Changes in Number of Biosolids Permitted Facilities in New York State.....	16

EXECUTIVE SUMMARY

A 2010 survey of publicly-owned treatment works (POTWs) identified 586 POTWs that generate biosolids (sewage sludge) in New York State out of a total of 642 POTWs that exist in the State. They currently produce a total of about 350,000 dry tons of biosolids annually. Since July 1 of 2010, landfilling has become the most popular management method with an estimated 52 percent of biosolids generated annually going to landfills, on a dry weight basis. Beneficial use, through methods such as land application, heat drying, chemical stabilization and composting, is at 30 percent. Incineration is used to treat 17% of the biosolids generated, and other management methods (lagooning, stockpiling, etc.) are used for one percent of the biosolids generated. Figure 1 depicts the latest data on biosolids management, by dry weight, in New York State.

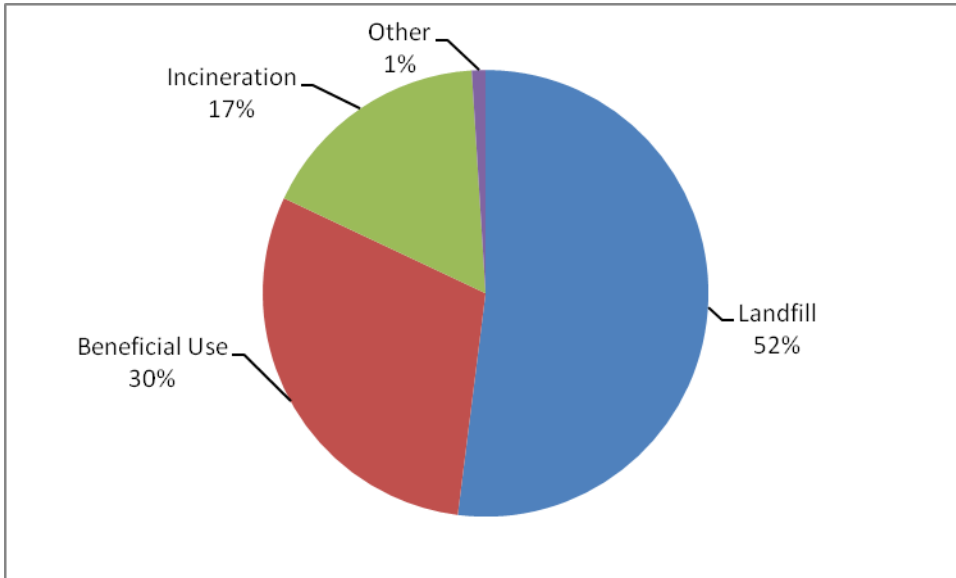
In terms of the number of treatment plants in the State, 321 POTWs are currently sending their sewage sludge to landfills, representing 55% of the plants. Beneficial use methods are used by 117 POTWs, representing 20% of the POTWs. Incineration is used by 78 POTWs, or 13% of the POTWs. Other methods are used by 70 POTWs, representing 12% of the POTWs. Figure 2 depicts this information.

In 2009, beneficial use was the most popular biosolids management method, on a dry weight basis, with 48 percent being beneficially used. During the last 15 years, beneficial use had been consistently the most popular method with over 48 percent of biosolids generated being beneficially used. However, in 2010 there was a big change in the amount of beneficial use when several major beneficial use facilities switched to landfilling, due to costs and other issues. This change caused a significant drop in the quantity of biosolids being beneficially used and makes landfilling the most popular method in the State since July 1, 2010. Many municipalities that recently switched to landfilling are still considering beneficial use options as they evaluate their long-term management practices. For the near future, however, it is not certain that the beneficial use option will regain the popularity it has enjoyed for the past 15 years.

The New York State Department of Environmental Conservation (Department or DEC) is not currently delegated to administer the federal regulatory program for biosolids management. Therefore, biosolids management is subject to both the federal criteria found in 40 CFR Part 503 Standards for the Use or Disposal of Sewage Sludge and the State regulations found in 6 NYCRR Part 360 Solid Waste Management Facilities (Part 360). Since March 10, 2003, State regulations have included all federal requirements. Therefore, when a municipality meets State requirements for biosolids management practices, it will meet the federal requirements as well. The Department promotes beneficial use of biosolids that meet the quality standards. However, the Department does not dictate a preferred method. The decision to select a use/disposal option lies with local municipalities.

Figure 1

**Biosolids Management in New York State
Dry Weight Basis
September 2010**



Landfill: 181,000 dry tons/year
Beneficial Use: 106,000 dry tons/year
Incineration: 60,000 dry tons/year
Other: 3,000 dry tons/year

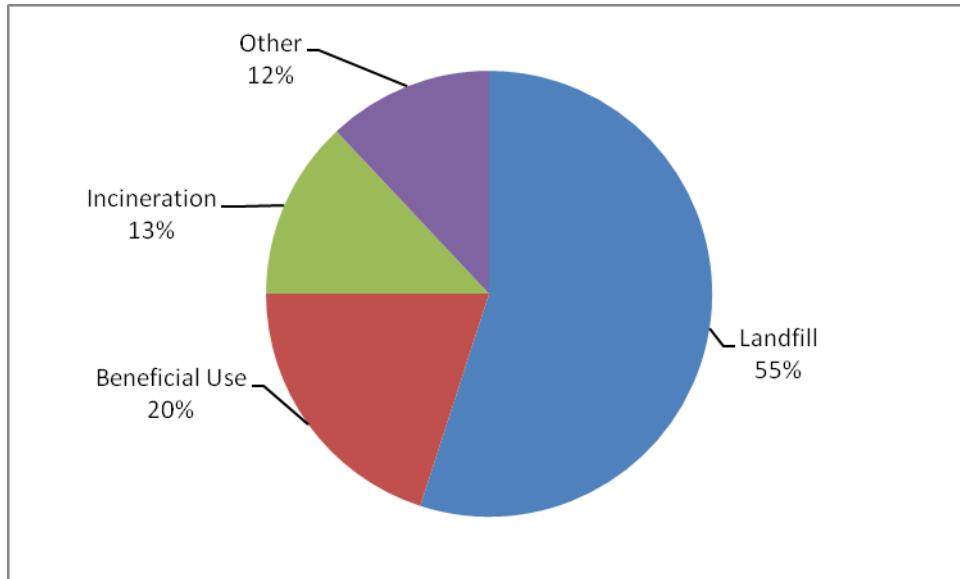
Total Production: 350,000 dry tons/year

Figure 2

Biosolids Management in New York State

Number of POTWs

September 2010



Landfill: 321 POTWs
Beneficial Use: 117 POTWs
Incineration: 78 POTWs
Other: 70 POTWs

Total Number of POTWs: 586

BIOSOLIDS MANAGEMENT PRACTICES

A. Sources for Information

The data and information in this report are compiled from a number of sources, including: a 2010 survey of all POTWs in the State, monitoring and information required by State permits, sampling and analysis conducted by the Department, and the existing data bases on wastewater treatment and biosolids management maintained by the Division of Materials Management and the Division of Water. Each source is discussed briefly below.

1. Biosolids Survey

Periodically, the Department surveys all the POTWs in New York State concerning their biosolids management practices. The latest survey was conducted in the spring of 2010. The survey requested information concerning the treatment process, information about the biosolids generated and how it is managed, and other general issues. The mailing of the survey questionnaires began in February of 2010. By June 2010, 549 responses were received from two rounds of direct mail surveys. This response rate accounts for about 94 percent of the total number of POTWs (586) in the State. On a dry weight basis, the responses received represent 97 percent of total biosolids production. For those facilities that did not respond to the survey, existing department records were used to determine biosolids management practices.

2. Monitoring and General Information from State Permits

POTWs involved in the beneficial use of biosolids through land application, composting, and other means are required to obtain a Part 360 permit in New York State. The permit requires detailed information concerning the treatment facility, the amount of biosolids generated, biosolids quality, and how the biosolids are handled. The Division of Materials Management maintains data bases for this type of information.

The Division of Water maintains a database on the name, location and characteristics of the POTWs. This information was used to develop the mailing list for the survey. Also, the Division of Water maintains a database for the Discharge Monitoring Reports (DMR) which contains biosolids quality data for major POTWs. The DMR quality data was also used, in part, to develop biosolids quality profiles for beneficial use facilities.

3. Sampling and Analyses Conducted by the Department

The Department conducts a sampling and analysis program each year when funding is available. The number of POTWs sampled each year varies depending on the amount of funding available. Recently, due to budget constraints, the sampling program conducted by the Department has been substantially reduced. Data obtained from Department sampling that was conducted is also used in this report.

B. *Basic Information*

There are currently 586 POTWs in the State of New York that produce biosolids, located across the 9 DEC regions. Appendix A provides contact information for these regional offices, where a POTW can contact their appropriate local office for information concerning permitting requirements for biosolids management practices. The combined design capacity of all the POTWs is about 3,700 million gallons of wastewater per day (MGD). The actual combined flow to the POTWs is about 2,530 MGD. Over sixty-five percent of the treatment works have a design capacity of less than one MGD. Appendix B provides basic POTW data for each facility, including the flow rate of each treatment plant, by design and actual flow, and the annual sludge generation rate. All reported sludge quantities are presented in dry tons (100 percent solids). The current total biosolids generation rate is approximately 350,000 dry tons per year.

Appendix B also shows the biosolids treatment and dewatering methods currently used by each POTW in New York State. Tables 1 and 2 summarize the treatment and dewatering methods used by the POTWs. Aerobic digestion is the most popular method for biosolids treatment, used by 38.4% of the plants, followed by anaerobic digestion, used by 21.7 % of the plants. Belt filter press is the most common method of dewatering, used by 26.3% of the plants, followed by drying beds, used by 17.1% of the POTWs. As shown in these two tables, there is a variety of methods for treatment and dewatering employed in the State. Appendix B also lists use/disposal method for each POTW. If a POTW uses more than one method, the major method is listed.

C. *Biosolids Management Practices*

Since July 1, 2010, landfilling is the most popular method for biosolids management, estimated at about 52% of the total biosolids generated in the State. Beneficial use, through methods such as land application, heat drying, chemical stabilization and composting, is at 30 percent by weight. Incineration is used to treat 17% of the biosolids generated, and other methods (lagooning, stockpiling, etc.) are used for one percent, as shown in Figure 1 and Table 3.

In terms of the number of treatment plants in the State, landfilling is currently used by 321 POTWs, representing 55% of the POTWs. Beneficial use is used by 117 POTWs, or 20% of the plants. Incineration is used by 78 POTWs, or 13% of the plants and other methods are used by 70 POTWs (12%), depicted in Figure 2. For the purposes of this report, if a POTW uses more than one use/disposal method, the POTW is counted under the major method only.

Table 1
Basic Treatment Methods Employed
By POTWs in New York State
September 2010

TREATMENT METHOD	# POTWs	% OF POTWs	SLUDGE QUANTITY Dry Tons/Year
Aerobic Digestion	225	38.4	28,273
Anaerobic Digestion	127	21.7	205,778
None	70	11.9	77,636
Septic Tank	68	11.6	353
Imhoff Tank	29	4.9	1,530
Lagoon	27	4.6	1,736
Holding Tank	25	4.3	15,124
Lime Stabilization	13	2.2	12,875
Wet Air Oxidation	1	0.2	1,442
Unox Process	1	0.2	3,009
Total	586	100.0	347,756

Table 2
Dewatering Methods Employed
By POTWs in New York State
September 2010

DEWATERING METHOD	# POTWs	% OF POTWs	SLUDGE QUANTITY Dry Tons/Year
None	271	46.2	76,908
Belt Filter Press	154	26.3	114,585
Drying Beds	100	17.1	5,502
Centrifuge	26	4.4	136,679
Plate & Frame Press	23	3.9	12,234
Reed Beds	7	1.2	139
Vacuum	2	0.3	1,481
Screw Press	1	0.2	23
Drainad Sludge Bag	1	0.2	40
Dewatering Drum	1	0.2	165
Total	586	100.0	347,756

Table 3
Current Biosolids Management in New York State
Dry Tons/Year
September 2010

	NY	%	Out of NY	%	Total	%
Landfilling	92,686	26.7	88,143	25.3	180,829	52.0
Beneficial Use	20,976	6.0	84,258	24.2	105,234	30.2
Direct Land Application	4,251	1.2	10,025	2.9	14,276	4.1
Composting	14,540	4.2	26,073	7.5	40,613	11.7
Chem. Stabilization	264	0.1	48,160	13.8	48,424	13.9
Heat Drying	1,921	0.5	0	0.0	1,921	0.5
Incineration	48,933	14.1	10,105	2.9	59,038	17.0
Other	2,655	0.8	0	0.0	2,655	0.8
Total	165,250	47.6	182,506	52.4	347,756	100.0

Table 3 provides dry tons per year figures for the following use/disposal methods:

1. Landfilling

This disposal method has recently become the most popular one, primarily due to its relatively low cost in most areas of the State. Sewage sludge is required to be stabilized or digested and dewatered to at least 20 percent solids. About 52% of the total biosolids generated in the State currently goes to landfills. As reported in Table 3, 26.7% of the biosolids generated goes to the New York State landfills and 25.3% goes to out-of-state landfills. Table 4 lists landfills accepting biosolids in the State, along with the annual estimated quantity of biosolids accepted at these landfills. It consists of one sludge monofill and 26 municipal solid waste landfills that accept mainly municipal solid waste.

Table 4
Landfills Accepting Sewage Sludge in New York State
September 2010

FACILITY NAME	COUNTY	SLUDGE QUANTITY Dry Tons/Year
DEC Region 4		
1 Albany City	Albany	81
2 Colonie	Albany	1,085
3 Delaware	Delaware	10
4 Rensselaer Co SD#1 Monofill	Rensselaer	1,448
DEC Region 5		
5 Clinton County	Clinton	1
6 Franklin County	Franklin	2,567
7 Fulton County	Fulton	3,114
DEC Region 6		
8 Ava	Oneida	1,402
9 DANC	Jefferson	2,567
DEC Region 7		
10 Auburn	Cayuga	16
11 Bristol Hill	Oswego	1,286
12 Broome County	Broome	3,823
13 Chenango County	Chenango	401
14 Cortland County	Cortland	836
15 Madison County	Madison	638
DEC Region 8		
16 Bath	Steuben	351
17 Chemung County	Chemung	1,549
18 High Acres	Monroe	23,850
19 Mill Seat	Monroe	4,483
20 Ontario County	Ontario	8,353
21 Seneca Meadows	Seneca	15,125
DEC Region 9		
22 Allegany County	Allegany	333
23 Allied Waste Niagara Falls	Niagara	9,117
24 Chaffee	Erie	36
25 Chautauqua	Chautauqua	6,087
26 Hyland	Allegany	1,132
27 Modern	Niagara	3,013
Total		92,686

2. Beneficial Use

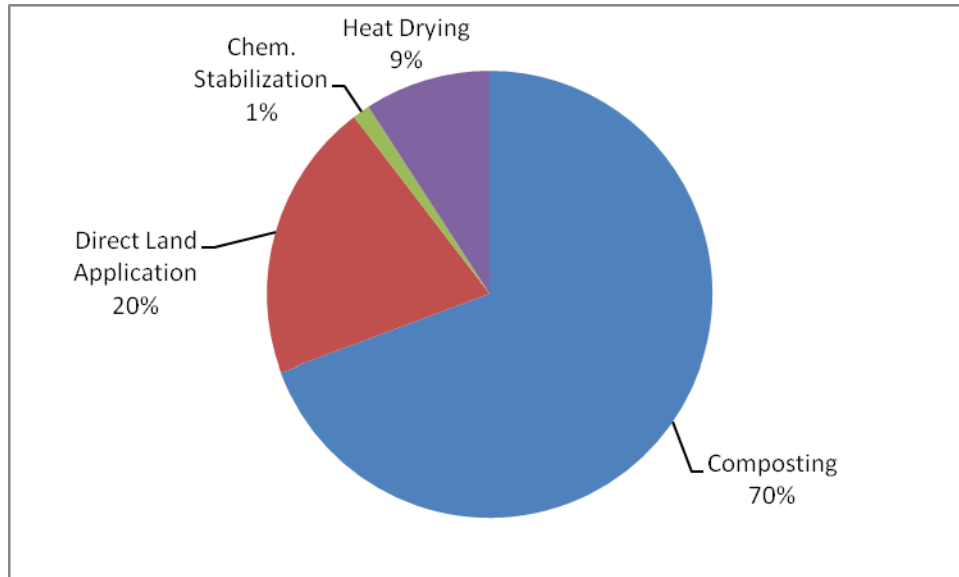
Beneficial use options include direct land application, composting, chemical stabilization, and heat drying. Landfilling and incineration are not considered beneficial use options in New York State. Direct land application involves the land application of Class B (digested, etc.) biosolids to land to fertilize crops or other vegetation. Composting, chemical stabilization and heat drying are Class A processes that convert biosolids into products such as compost, liming material, and fertilizer pellets. Composting is an aerobic biological process that accelerates the natural decomposition process under controlled conditions. The biosolids are dewatered and mixed with an amendment, such as wood chips, sawdust, or yard waste. The mixture is allowed to decompose at temperatures high enough to destroy pathogenic organisms. The resultant product is a humus or soil-like material typically used for landscaping and other soil amendment uses. Chemical stabilization, such as the N-Viro process, involves the blending of dewatered biosolids with alkaline admixtures, such as quicklime, lime kiln dust, pulverized limestone, and/or coal ash. Sufficient alkaline materials are added to produce heat and high pH of the material during treatment that also destroys pathogens. The resultant product is typically used as a liming agent in agriculture. Heat drying is a process that typically takes dewatered biosolids (20-30 percent solids) as the feed and produces a dry product greater than 90 percent solids. The process raises the temperature of biosolids to destroy pathogens and to remove moisture. The end product can be marketed as a fertilizer. At present, beneficial use methods account for about 30% of total biosolids production in the State. Most of beneficial use practices occur at out-of-state facilities, which account for about 24% of total biosolids production. The remainder, 6%, is handled by New York State facilities.

Figures 3 and 4 depict the breakdown of beneficial use methods utilized by New York facilities, based on the quantity of biosolids and the number of POTWs involved, respectively. On a dry weight basis, the most popular beneficial use method is composting (70%), followed by direct land application of Class B biosolids (20%). Both chemical stabilization and heat drying now comprise only 10% of total biosolids beneficially used in the State. In terms of the number of POTWs involved, composting and direct land application are also the two methods most used by POTWs (93%). Only 7% of POTWs that beneficially used their biosolids use chemical stabilization and heat drying methods (see Figure 4).

In New York State, all Class A processes (composting, chemical stabilization and heat drying) and direct land application of Class B biosolids must have Part 360 permits. Table 5 lists 45 State facilities under Part 360 permits, which includes 24 biosolids composting, 18 land application, 2 heat drying facilities and 1 chemical stabilization facility. One Part 360 permit may service more than one POTW. For example, the 24 composting facilities receive biosolids from 60 POTWs (see Figure 4); the 18 land application permits receive biosolids from 49 POTWs; the two heat drying facilities receive biosolids from 2 POTWs; and the one chemical stabilization facility processes biosolids from 6 POTWs.

Figure 3

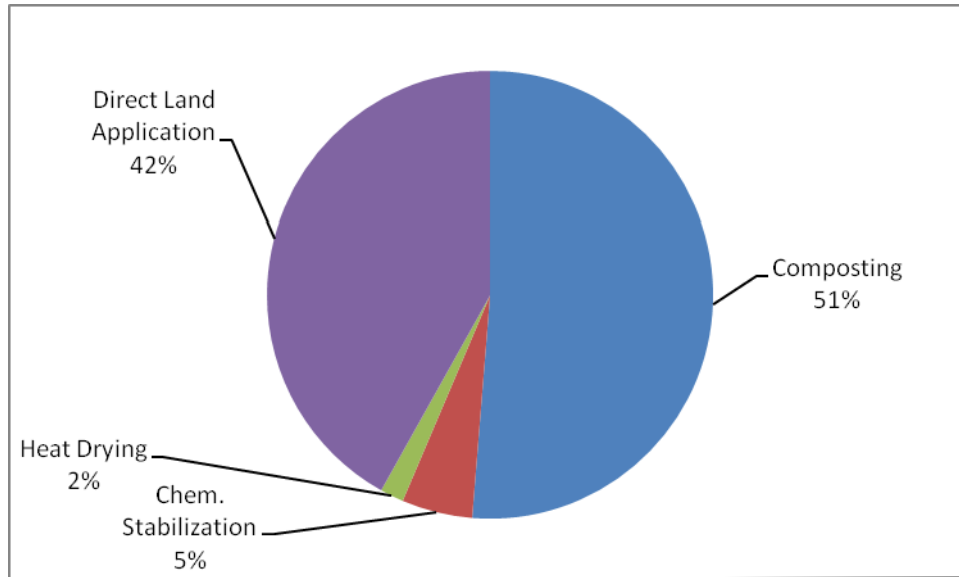
**Beneficial Use of Biosolids in New York State
Dry Weight Basis
September 2010**



Chemical Stabilization: 300 dry tons/year
Heat Drying: 1,900 dry tons/year
Composting: 14,500 dry tons/year
Direct Land Application: 4,300 dry tons/year
Total Beneficial Use: 21,000 dry tons/year

Figure 4

**Beneficial Use of Biosolids in New York State
Number of POTWs
September 2010**



Chemical Stabilization: 6 POTWs

Heat Drying: 2 POTWs

Composting: 60 POTWs

Direct Land Application: 49 POTWs

Total Beneficial Use: 117 POTWs

Table 5
Part 360 Permitted
Biosolids Beneficial Use Facilities
September 2010

FACILITY NAME	COUNTY	FACILITY TYPE	BIOSOLIDS Dry Tons/Year
DEC Region 3			
1 Tri-Municipal	Dutchess	Composting	246
2 Rockland County	Rockland	Composting	6,653
3 Kingston	Ulster	Heat Drying	530
4 Yorktown	Westchester	Composting	237
DEC Region 4			
5 Delaware County	Delaware	Composting	1,193
6 Schenectady	Schenectady	Composting	2,786
DEC Region 5			
7 Ticonderoga	Essex	Land Application	156
8 Speculator	Hamilton	Land Application	10
9 Washington County	Washington	Composting	861
DEC Region 6			
10 Camden	Oneida	Land Application	53
11 Waterville	Oneida	Land Application	13
12 Waterville	Oneida	Composting	4
13 Heuvelton	St. Lawrence	Land Application	38
14 Waste Stream, Inc.	St. Lawrence	Land Application	260
DEC Region 7			
15 Chenango	Broome	Composting	86
16 Endicott	Broome	Composting	503
17 Weedsport	Cayuga	Composting	68
18 Greene	Chenango	Composting	25
19 Madison County	Madison	Composting	70
20 Canastota	Madison	Composting	249
21 Chittenango	Madison	Land Application	144
22 LBD Enterprise	Madison	Land Application	930
23 Tully	Onondaga	Land Application	20
24 Owego Village	Tioga	Land Application	131
DEC Region 8			
25 LeRoy	Genesee	Chemical Stabilization	264
26 Mt. Morris	Livingston	Composting	60
27 Nunda	Livingston	Land Application	22
28 Clifton Springs	Ontario	Composting	47

39 Manchester-Shortville	Ontario	Composting	63
30 Medina	Orleans	Composting	75
31 Albion	Orleans	Land Application	240
32 Cayuga Heights	Seneca	Land Application	280
33 Hornell	Steuben	Land Application	262
34 Leo Dickson	Steuben	Land Application	1,305
35 Ontario	Wayne	Composting	99
36 Sodus	Wayne	Composting	47
37 Walworth	Wayne	Land Application	65

DEC Region 9

38 Little Valley	Cattaraugus	Land Application	10
39 Salamanca	Cattaraugus	Land Application	72
40 Amherst	Erie	Heat Drying	1,391
41 Gowanda	Erie	Composting	99
42 Lockport	Niagara	Composting	800
43 Newfane	Niagara	Composting	289
44 Arcade	Wyoming	Composting	50
45 Attica	Wyoming	Composting	170

Total **20,976**

3. Incineration

Incineration involves high temperature combustion of sewage sludge without energy recovery. The method reduces the volume of sewage sludge by at least 70%. The resultant ash must be ultimately disposed, usually at a solid waste landfill. Due to high capital and operating cost, this method is the least popular biosolids management practice. At present, there are 78 POTWs using incineration, which accounts for 17% of total biosolids generated, including about 14% incinerated at New York facilities and about 3% at out-of-state facilities (see Table 3). Table 6 lists the 12 sewage sludge incinerators that are now operating in New York, with pertinent information such as incinerator type and the amount of sewage sludge received at each facility. These incinerators are all located at POTWs, with 8 using fluidized bed and 4 using multiple hearth technologies.

Table 6
Sewage Sludge Incinerators in New York State
September 2010

FACILITY NAME	COUNTY	TYPE	SLUDGE QUANTITY Dry Tons/Year
DEC Region 1			
1 Port Washington	Nassau	Fluidized Bed	590
DEC Region 3			
2 Arlington	Dutchess	Fluidized Bed	676
DEC Region 4			
3 Albany North	Albany	Multiple Hearth	6,910
4 Albany South	Albany	Multiple Hearth	4,057
DEC Region 5			
5 Saratoga County SD# 1	Saratoga	Fluidized Bed	4,277
6 Glens Falls	Warren	Fluidized Bed	1,816
DEC Region 6			
7 Little Falls	Herkimer	Fluidized Bed	830
8 Watertown	Jeffreson	Fluidized Bed	2,230
9 Oneida County	Oneida	Fluidized Bed	6,173
DEC Region 9			
10 Bird Island	Erie	Multiple Hearth	15,443
11 Southtowns	Erie	Fluidized Bed	2,922
12 Tonawanda	Erie	Multiple Hearth	3,009
Total			48,933

4. Other Methods

Other methods are used by 70 POTWs, which are generally limited to small treatment plants. They account for less than one percent of total statewide biosolids production. They include:

- * Treatment lagoons or reed beds - biosolids are retained for a long period of time. Biosolids are removed when needed, possibly once every 10 to 20 years.
- * Stockpiling on-site - storing dewatered biosolids on-site. Storage is limited to 18 months or less without a Part 360 permit.
- * Holding or temporary storage - biosolids are temporarily stored in some type of holding tank.

TRENDS IN BIOSOLIDS MANAGEMENT

Figure 5 depicts the change in biosolids management practices in New York State over the last 20 years. Since 1998, the trend shows a steady increase in the use of landfills for biosolids disposal. Landfilling increases from 17% in 1998 to the present 52% of total biosolids production on a dry weight basis, primarily due to relatively low tipping fees in many regions of the State. Beneficial use became popular in 1994 when ocean disposal was prohibited and the Department promoted the beneficial use of biosolids. This option was the most popular method for about 15 years, at about 50% of total biosolids generated in the State. In 2010, two large beneficial use facilities, a heat drying facility and a chemical stabilization facility, closed and the biosolids were diverted to landfills. This change reduced beneficial use to 30% of total biosolids production. Since 1994, incineration has gradually decreased from 33% to the present 17% of the total biosolids production rate. High maintenance and operating costs are the main reasons that make this option the least popular in the State.

Figure 6 illustrates the change in number of permitted facilities that handle biosolids over the last 20 years. The number of landfills accepting sewage sludge had sharply dropped from 1989 to 1998, due to the Department's enforcement actions to close landfills that did not meet new standards, such as double liner requirements. However, since 1998 the number of landfills accepting biosolids has gradually increased while the number of permitted beneficial use facilities and of sewage sludge incinerators has decreased.

Figure 5

Changes in Biosolids Management in New York State (% Dry Weight)

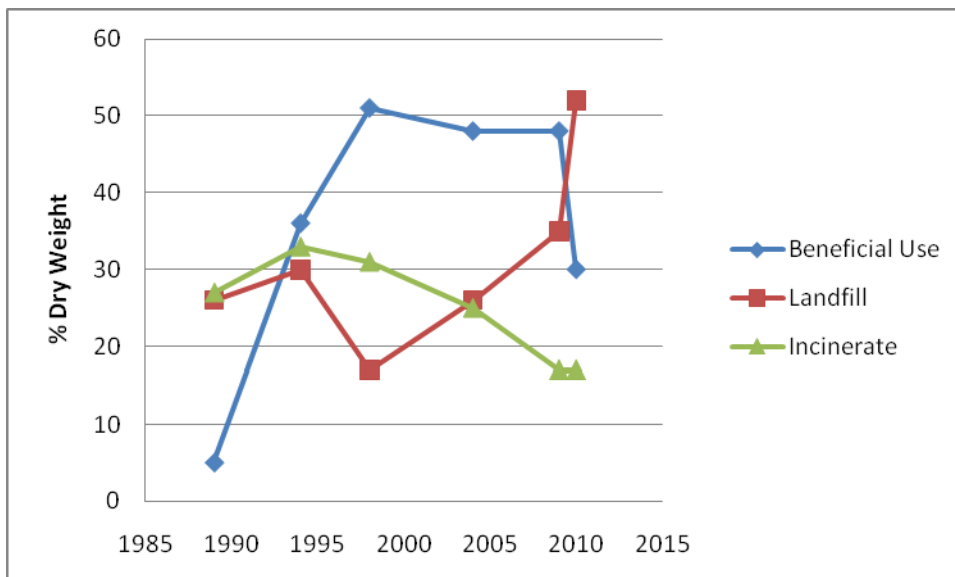
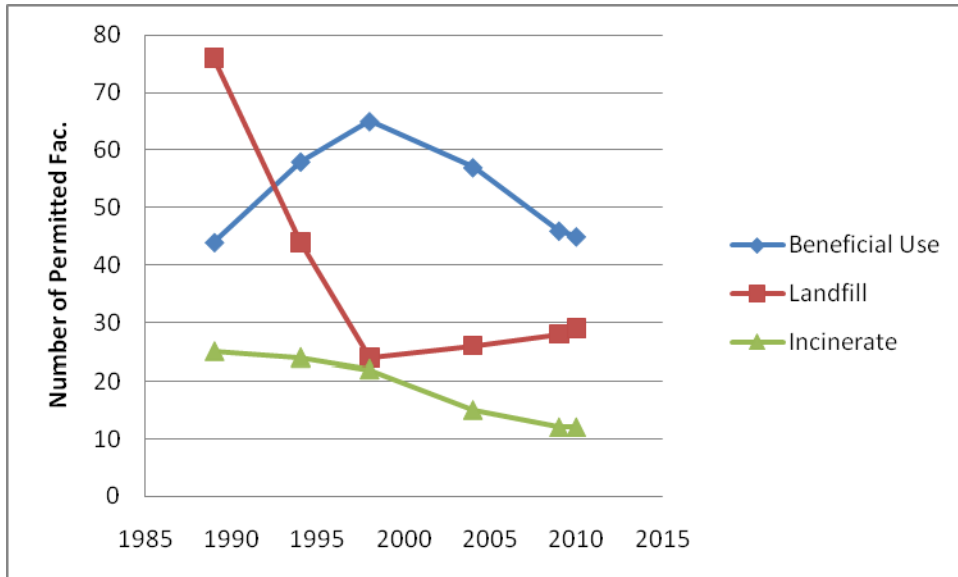


Figure 6

Changes in Number of Biosolids Permitted Facilities in New York State



BIOSOLIDS CHARACTERISTICS

Appendix C contains 2009 biosolids data for the ten regulated metals under the current federal and State rules. The biosolids data were collected by the Department for the 41 major POTWs which generate over 51% of total biosolids production in New York State. Most of these POTWs utilize beneficial use options. Their characteristics are important and play a major role in determining biosolids management practices. Table 7 presents a summary of the current biosolids characteristics for biosolids generated at these POTWs, including metals and some nutrients, such as total nitrogens, phosphorus, and potassium. The metal statistics show that the current biosolids quality can easily meet federal and State recycling standards.

Table 7
2009 Biosolids Characteristics in New York State
Dry Weight Basis

Parameter	Unit	# POTW	NYS Standards	Median	Mean	Standard Deviation
pH	s.u.	41		7.30	7.50	1.25
Total Solids	%	41		21.40	19.11	10.41
Total Volatile Solids	%	41		61.20	60.96	11.43
Total Kjeldahl Nitrogen	%	41		4.90	4.51	2.05
Ammonia Nitrogen	%	39		0.90	1.06	0.87
Nitrate Nitrogen	%	2		0.10	0.10	0.00
Total Phosphorus	%	40		1.75	1.93	1.10
Potassium	%	40		0.10	0.20	0.16
Arsenic	mg/kg	40	41	5.60	8.91	8.56
Cadmium	mg/kg	41	10/21*	3.60	4.46	4.33
Chromium	mg/kg	41	1,000	37.10	43.07	26.96
Copper	mg/kg	41	1,500	592.00	572.49	247.55
Mercury	mg/kg	40	10	1.10	1.39	1.04
Molybdenum	mg/kg	40	40	7.90	11.06	13.70
Nickel	mg/kg	41	200	19.50	24.63	20.24
Lead	mg/kg	41	300	59.40	90.29	93.02
Selenium	mg/kg	40	100	7.80	11.55	10.27
Zinc	mg/kg	41	2,500	832.00	888.56	540.62

* 10 mg/kg for Class A and 21 mg/kg for Class B biosolids. The rest of standards applies to both Class A and Class B biosolids.

APPENDICES

- A. DEC Regional Offices
- B. 2009/2010 POTW Use/Disposal Information
- C. Selected 2009 Biosolids Metal Data

APPENDIX A

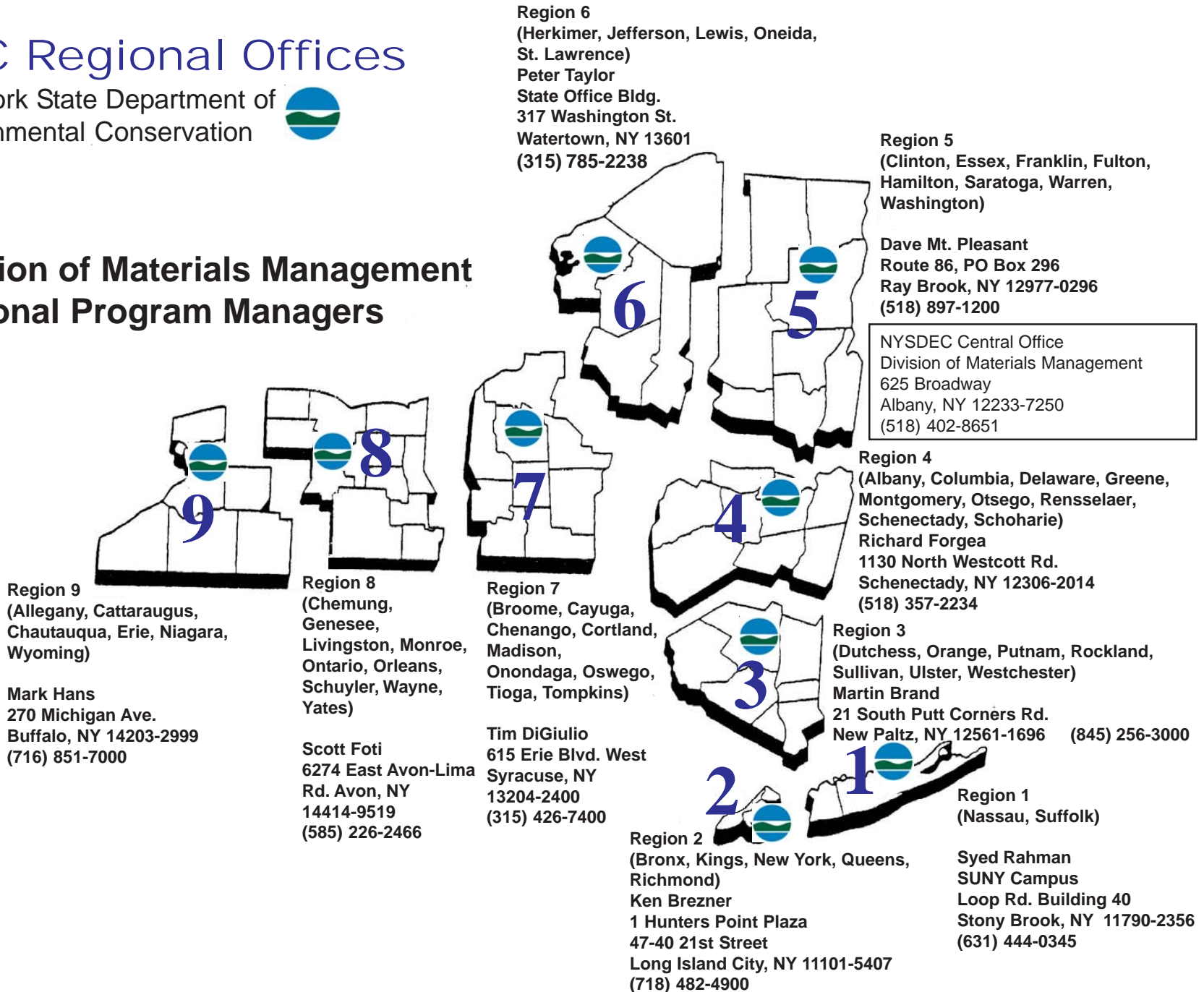
REGIONAL OFFICES

Appendix A

DEC Regional Offices

New York State Department of
Environmental Conservation 

Division of Materials Management Regional Program Managers



APPENDIX B

2009/2010 POTW USE/DISPOSAL INFORMATION

**NEW YORK STATE DEPARTMENT OF ENVIRONMENTAL CONSERVATION
DIVISION OF MATERIALS MANAGEMENT
2009/2010 POTW USE/DISPOSAL INFORMATION**

FACILITY NAME	SPDES #	FLOW, DESIGN	MGD ACTUAL	SLUDGE TREATMENT METHOD	DEWATERING DEVICE	DRY TONS PER YEAR	USE/DISPOSAL METHOD	LOCATION
DEC REGION 1								
NASSAU COUNTY								
ATLANTIC BEACH STP	23523	1.500	0.540	Anaerobic Digestion	None	60	Compost	Sent to Bay Park
BELGRAVE WPCP	26841	2.000	1.421	Anaerobic Digestion	None	150	Compost	Sent to Bay Park
CEDARHURST (V) WPCP	22462	1.000	0.751	Anaerobic Digestion	None	109	Compost	Sent to Bay Park
GLEN COVE (C) WTP	26620	5.500	2.850	None	Belt Filter Press	861	Incinerate/Landfill	Naugatuck, CT/Chemung Co LF
GREAT NECK (V) WPCP	22128	1.500	0.792	Anaerobic Digestion	None	106	Landfill	By Spectraserv Inc.
GREAT NECK WPC DISTRICT	26999	3.800	2.510	Anaerobic Digestion	Belt Filter Press	203	Landfill	By Spectraserv
LAWRENCE (V) WPCF	20354	1.500	1.327	Anaerobic Digestion	Belt Filter Press	35	Landfill	Spectraserv Inc.
LONG BEACH (C) WPCP	20567	7.500	4.370	Anaerobic Digestion	Belt Filter Press	514	Landfill	Shade LF
NCSD#2 - BAY PARK STP	26450	70.000	49.000	Anaerobic Digestion	Belt Filter Press	7290	Compost	A&M Composting, PA
NCSD#3 CEDAR CREEK WPCP	26859	72.000	72.000	Anaerobic Digestion	Belt Filter Press	8130	Compost	A&M Composting, PA
OYSTER BAY WPCP	21822	1.800	1.095	Anaerobic Digestion	None	96	Landfill	By Spectra Serve Inc., NJ
PORT WASHINGTON WPCP	26778	4.000	2.600	None	Belt Filter Press	590	Incinerate	On-site
SUFFOLK COUNTY								
EAST HAMPTON (T) SCAVENGER WTF	199079	0.045	0.017	Aero. Holding Tank	None	400	Landfill	Sent to Bergen Point
GREENPORT (V) WWTP	20079	0.650	0.293	Imhoff Tank	None	14	Landfill	Sent to Bergen Point
HUNTINGTON (T) STP	21342	2.500	2.117	Aerobic Digestion	Belt Filter Press	854	Landfill	Spectraserv Inc.
NORTHPORT (V) STP	24881	0.450	0.307	Aero. Holding Tank	None	40	Landfill	Sent to Bergen Point
OCEAN BEACH (V) STP	20168	0.500		None	None	13	Landfill	Sent to Bergen Point
PATCHOGUE (V) WWTP	23922	0.500	0.229	None	None	50	Landfill	Sent to Bergen Point
RIVERHEAD (T) SD STP	20061	1.300	0.800	Aerobic Digestion	Belt Filter Press	1319	Landfill	Sent to Bergen Poin

SAG HARBOR (V) WWTP	28908	0.250	0.058	Aerobic Digestion	None	40	Landfill	Sent to Bergen Point
SELDEN WWTP	79481	0.181	0.023	Aero. Holding Tank	None	3	Landfill	Sent to Bergen Point
SUFFOLK CO CC @ RIVERHEAD STP	78131	0.012	0.005	Aero. Holding Tank	None	2	Landfill	Sent to Bergen Point
SUFFOLK CO SD GABRESKI STP	226971	0.100	0.009	Aero. Holding Tank	None	1	Landfill	Sent to Bergen Point
SUFFOLK CO SD YAPHANK COMM CENTER	85693	0.250	0.093	Aero. Holding Tank	None	16	Landfill	Sent to Bergen Point
SUFFOLK CO SD#1 PORT JEFFERSON STP	21750	0.850	0.675	None	None	118	Landfill	Sent to Bergen Point
SUFFOLK CO SD#11 SELDEN STP	79324	1.757	1.507	Aero. Holding Tank	None	422	Landfill	Sent to Bergen Point
SUFFOLK CO SD#12 BIRCHWOOD STP	79511	0.180	0.368	Aero. Holding Tank	None	45	Landfill	Sent to Bergen Point
SUFFOLK CO SD#13 WIND WATCH STP	77429	0.400	0.173	Aero. Holding Tank	None	34	Landfill	Sent to Bergen Point
SUFFOLK CO SD#14 PARKLAND STP	65358	1.250	0.598	Aero. Holding Tank	None	185	Landfill	Sent to Bergen Point
SUFFOLK CO SD#15 NOB HILL STP	77330	0.090	0.042	Aero. Holding Tank	None	21	Landfill	Sent to Bergen Point
SUFFOLK CO SD#18H HEARTLAND STP	84514	0.200	0.077	Aero. Holding Tank	None	25	Landfill	Sent to Bergen Point
SUFFOLK CO SD#18I ITT STP	136964	0.250	0.130	Aero. Holding Tank	None	134	Landfill	Sent to Bergen Point
SUFFOLK CO SD#2 TALLMADGE STP	221678	0.400	0.173	None	None	43	Landfill	Sent to Bergent Point
SUFFOLK CO SD#20L LEISURE VILLAGE STP	79359	0.300	0.238	Aero. Holding Tank	None	65	Landfill	Sent to Bergen Point
SUFFOLK CO SD#20R RIDGE HAVEN STP	226688	0.083	0.076	Aero. Holding Tank	None	21	Landfill	Sent to Bergen Point
SUFFOLK CO SD#21 SUNY STP	206644	2.500	1.760	Anaerobic Digestion	None	375	Landfill	Sent to Bergen Point
SUFFOLK CO SD#22 HAUPPAUGE STP	66028	0.202	0.094	Aero. Holding Tank	None	20	Landfill	Sent to Bergen Point
SUFFOLK CO SD#23 COVENTRY MANOR	80667	0.070	0.044	Aero. Holding Tank	None	28	Landfill	Sent to Bergen Point
SUFFOLK CO SD#28 FAIRFIELD STP	91081	0.140	0.076	None	None	11	Landfill	Sent to Bergen Point
SUFFOLK CO SD#3 BERGEN POINT STP	104809	30.500	25.700	Aero. Holding Tank	Belt Filter Press	13231	Landfill	Various LFs in GA, SC, VA
SUFFOLK CO SD#5 HUNTINGTON STP	70033	0.236	0.175	Aero. Holding Tank	None	51	Landfill	Sent to Bergen Point
SUFFOLK CO SD#6 KINGS PARK STP	23311	0.600	0.324	Aero. Holding Tank	None	111	Landfill	Sent to Bergen Point
SUFFOLK CO SD#7P TWELVE PINES STP	80683	0.650	0.446	Aero. Holding Tank	None	173	Landfill	Sent to Bergen Point
SUFFOLK CO SD#7W WOODSIDE STP	76988	0.400	0.239	Aero. Holding Tank	None	35	Landfill	Sent to Bergen Point
SUFFOLK CO SD#9 COLLEGE PARK STP	65447	0.045	0.030	Aero. Holding Tank	None	46	Landfill	Sent to Bergen Point

FACILITY NAME	SPDES #	FLOW, DESIGN	MGD ACTUAL	SLUDGE TREATMENT METHOD	DEWATERING DEVICE	DRY TONS PER YEAR	USE/DISPOSAL METHOD	LOCATION
DEC REGION 2								
BRONX COUNTY								
HUNTS POINT WPC	26191	200.000	127.000	Anaerobic Digestion	Centrifuge	11250	Landfill/Chem. Stab.	Out-of-State
KINGS COUNTY								
26TH WARD WPCP	26212	85.000	48.000	Anaerobic Digestion	Centrifuge	4300	Chem. Stab./Landfill	Out-of-State
CONEY ISLAND WPC	26182	110.000	86.000	Anaerobic Digestion	None	7700	Chem. Stab./Landfill	Sent to 26th Ward
NEWTOWN CREEK WPC	26204	310.000	252.000	Anaerobic Digestion	None	22320	Landfill/Chem. Stab.	Sent to Hunts Pt/Wards Is...
OWLS HEAD WPC	26166	120.000	95.000	Anaerobic Digestion	None	8400	Landfill/Chem. Stab.	Sent to Hunts Pt/Bower Bay...
RED HOOK WPCP	27073	60.000	29.000	Anaerobic Digestion	Centrifuge	2640	Landfill/Chem. Stab.	Out-of-State
NEW YORK COUNTY								
NORTH RIVER WPC	26247	170.000	123.000	Anaerobic Digestion	None	11000	Landfill/Chem. Stab.	Sent to Wards Is./Hunts Points
WARDS ISLAND WPC	26131	275.000	198.000	Anaerobic Digestion	Centrifuge	17600	Landfill/Chem. Stab.	Out-of-State
QUEENS COUNTY								
BOWERY BAY WPC	26158	150.000	108.000	Anaerobic Digestion	Centrifuge	9800	Landfill/Compost	Out-of-State
JAMAICA WPC	26115	100.000	80.000	Anaerobic Digestion	Centrifuge	7030	Chem. Stabilize	Out-of-State
ROCKAWAY WTP	26221	45.000	20.000	Anaerobic Digestion	None	1770	Landfill/Chem. Stab.	Sent to Hunts Pt/26th Wards
TALLMAN ISLAND WPC	26239	80.000	56.000	Anaerobic Digestion	Centrifuge	4960	Compost	Out-of-State
RICHMOND COUNTY								
OAKWOOD BEACH WPC	26174	39.900	26.300	Anaerobic Digestion	Centrifuge	2330	Compost/Chem. Stab.	Out-of-State
PORT RICHMOND WPCP	26107	60.000	27.000	Anaerobic Digestion	None	2400	Landfill/Chem. Stab.	Sent to Wards Is./Oakwood Beach

FACILITY NAME	SPDES #	FLOW, DESIGN	MGD ACTUAL	SLUDGE TREATMENT	DEWATERING DEVICE	DRY TONS	USE/DISPOSAL METHOD	LOCATION
				METHOD		PER YEAR		
DEC REGION 3								
DUTCHESS COUNTY								
ARLINGTON STP	26271	4.000	2.700	None	Belt Filter Press	673	Incinerate	on-site
BEACON (C) WPCP	25976	6.000	3.400	Aerobic Digestion	Belt Filter Press	1304	Incinerate	Veolia WWTP in Naugatuck, CT
COUNTRY CLUB ESTATES S.D.	34606	0.060	0.043	Aerobic Digestion	None	3	Incinerate	Sent to Arlington
DOVER RIDGE ESTATES-SEC 1 & 2	164933	0.028	0.015	Septic Tank	None	2	Incinerate	Earthcare - All County
FISHKILL (V) WWTP	60992	0.450	0.360	Aerobic Digestion	None	90	Landfill	By EarthCare to NJ
FLEETWOOD MANOR SD WWTP	21601	0.066	0.042	None	None	8	Landfill	By Coppola Services to NJ
GREENFIELDS SD WWTP	97896	0.132	0.070	Aerobic Digestion	None	8	Landfill	By All County - Earthcare
MIDPOINT PK SD WWTP	35637	0.066	0.098	None	None	10	Landfill	By Coppola Services to NJ
MILLBROOK (V) STP	25429	0.250	0.184	Aerobic Digestion	Drying Beds	33	Landfill	UPSTATE NY
NOXON KNOLLS SD STP	26085	0.033	0.019	Aerobic Digestion	None	7	Landfill	Sent to Beacon by Spectraserv Inc
PAWLING JOINT SEWER COMMISSION	165891	0.280	0.269	Aerobic Digestion	Drying Beds	50	Incinerate	Naugatuck STP in CT
POUGHKEEPSIE (C) WPCP	26255	8.000	7.060	None	None	1900	Incinerate	By Veolia Water
RHINEBECK STP	110281	0.260	0.145	Lime Stabilization	Plate & Frame Press	70	Landfill	By EarthCare/Residuals Manag.
ROMBOUT STP	60976	0.500	0.315	None	None	66	Landfill	Sent to Beacon
TITUSVILLE SD STP	26093	0.500	0.290	Aerobic Digestion	None	40	Landfill	Sent to Beacon
TIVOLI (V) WWTP	22098	0.100	0.083	Aerobic Digestion	None	12	Store On-site	Red beds
TRI-MUNICIPAL WWTP	149209	1.400		Aerobic Digestion	Belt Filter Press	246	Compost	On-site
VALLEY DALE STP	77593	0.038	0.026	Septic Tank	None	10	Landfill	Sent to Beacon
VANDEBURGH COVE SD#1	99295	0.008	0.008	Septic Tank	None	5	Incinerate	Sent to Poughkeepsie
WILDWOOD SD	37117	0.100	0.083	None	None	16	Landfill	By Coppola Services
ORANGE COUNTY								
CORNWALL (T) WWTP	22144	1.500	0.910	Anaerobic Digestion	None	120	Landfill	Sent to Beacon
FIRTHCLIFF SD	22152	0.120	0.018	Aerobic Digestion	None	2	Landfill	Sent to Beacon
FLORIDA (V) STP	20273	0.450	0.309	Imhoff Tank	Belt Filter Press	66	Landfill	By Earthcare
GLENWOOD HILLS SD	215457	0.012	0.006	Aerobic Digestion	None	1	Landfill	Sent to Middletown

GOSHEN (V) WWTP	31518	2.000	1.300	Anaerobic Digestion	Centrifuge	165	Land Apply	By Lang Enviroventures
HAMLET WWTP	31224	0.100	0.035	Imhoff Tank	None	10	Compost	Sent to Harriman
HIDDEN VALLEY ESTATES SD	34436	0.060		Imhoff Tank	None	5	Contract Hauler	Not specified
HIGHLAND (T) FT MONTGOMERY	149411	0.125	0.085	Aerobic Digestion	Drying Beds	30	Compost	Rockland Co Co-Composting Fac.
HIGHLAND FALLS (V) WWTP	22586	1.350	0.701	Anaerobic Digestion	Belt Filter Press	153	Landfill	By Lang Enviroventures
KIRYAS JOEL (V) WWTP	250520	1.000	0.408	None	None	110	Landfill	By Coppola Services to NJ
MAYBROOK (V) WWTP	23272	0.400		Anaerobic Digestion	Drying Beds	43	Land Apply	By Lang Enviroventures
MIDDLETOWN (C) STP	26328	6.000	5.000	Anaerobic Digestion	Belt Filter Press	366	Landfill	Veolia Greentree LF
MONTGOMERY (T) SD#1 STP	247782	0.150	0.111	Aerobic Digestion	Drying Beds	45	Landfill	Enviroventure in PA
MONTGOMERY (V) WWTP	26433	0.500	0.312	Aerobic Digestion	Belt Filter Press	73	Incinerate	By Synagro, CT
NEW WINDSOR (T) STP	22446	5.000	4.090	None	Belt Filter Press	540	Landfill	Chemung Co LF
NEWBURGH (C) WPCP	26310	9.000	5.980	Anaerobic Digestion	Belt Filter Press	1396	Incinerate	Synagro-Northeast
NOB HILL SD WWTP	145599	0.012	0.011	Septic Tank	None	2	Landfill	NJ
OCSO #1 HARRIMAN STP	27901	6.000	4.706	Aerobic Digestion	Belt Filter Press	1386	Compost	Rockland Co Co-Composting Fac.
PINE BUSH WWTP	110019	0.300	0.202	Septic Tank	None	25	Landfill	Pike County
PORT JERVIS STP	26522	2.500	1.190	None	None	326	Landfill	By Spectraserv Inc.
RIDGEBURY LAKE ACRES STP	62278	0.030	0.019	Aerobic Digestion	None	3	Incinerate	By Fred Cook Inc.
ROBIN MEADOWS SD	29149	0.080	0.032	Aerobic Digestion	None	4	Incinerate	By Fred Cook Inc.
TAPPAN HOMES SD	62251	0.064	0.006	Aerobic Digestion	None	10	Landfill	Sent to Middletown
TUXEDO PARK (V) WWTP	31216	0.400	0.233	Aerobic Digestion	None	30	Compost	Sent to Harriman
VALLEY FORGE STP CONSOL SD#1	20478	0.056	0.030	Anaerobic Digestion	None	5	Compost	Sent to Harriman
WALDEN (V) STP	30490	1.200	1.100	Aerobic Digestion	Belt Filter Press	90	Landfill	Apex LF/Greentree LF
WALLKILL (T) STP	24422	4.000	2.900	None	Belt Filter Press	530	Incinerate	SYNAGRO CT
WARWICK (T) SD#1	21890	0.430	0.284	None	Belt Filter Press	60	Landfill	By Spectraserve, NJ
WARWICK (V) WWTP	23680	1.000	0.641	Anaerobic Digestion	Belt Filter Press	130	Landfill	APEX LF
WASHINGTONVILLE (V) WWTP	23671	0.700	0.680	Aerobic Digestion	Belt Filter Press	111	Land Apply	Lang Industries, Inc.
PUTNAM COUNTY								
BLACKBERRY HILL SAN. SD STP	62570	0.075	0.062	Septic Tank	None	7	Incinerate	By Fred Cook, Inc.
BREWSTER HEIGHTS SD STP	110353	0.150	0.130	Aerobic Digestion	Drying Beds	32	Landfill	By Spectra Serve to NJ
BREWSTER WWTP	26581	0.240	0.144	None	None	50	Incinerate	By Fred Cook, Inc.
CARMEL SD#2 WWTP	31356	1.100	0.714	None	None	140	Landfill	By Spectraserv Inc.

CARMEL SD#4 - LAKE SECOR	105252	0.200	0.150	None	None	30	Landfill	By Spectraserv Inc. to NJ	
CARMEL SD#5 - HILLSDALE	30678	0.027	0.018	None	None	8	Incinerate	Naugatuck, CT	
CARMEL SD#6 - IVY HILLS	31828	0.050	0.036	None	None	8	Incinerate	Naugatuck, CT	
CARMEL SD#7 - COUNTRY MANOR	29017	0.047	0.031	None	None	13	Incinerate	To Naugatuck, CT	
COLD SPRING WWTP	22721	0.500	0.230	Aerobic Digestion	None	25	Landfill	By All County to NJ	
MAHOPAC WWTP	26590	0.300	0.160	Anaerobic Digestion	Belt Filter Press	46	Landfill	By Spectroserve	
PUTNAM NATIONAL GOLF CLUB WWTP	260371	0.010	0.001	None	None	1	Landfill	Naugatuck, CT	
ROCKLAND COUNTY									
HAYERSTRAW JOINT REGIONAL STP	28533	8.000	4.200	None	Belt Filter Press	800	Compost	Rockland Co Co-Composting Fac.	
ORANGETOWN (T) SD#2 STP	26051	12.750	7.870	None	Belt Filter Press	1300	Compost	Rockland Co Co-Composting Fac.	
ROCKLAND COUNTY SD#1 STP	31895	28.900	19.200	Anaerobic Digestion	Centrifuge	2958	Compost	Rockland Co SWMA	
SLOATSBURG (V) WWTP	105198	0.030	0.004	Aerobic Digestion	None	2	Compost	Sent to Rockland Co SD#1	
STONY POINT (T) WWTP	28851	1.000	0.790	Aerobic Digestion	Belt Filter Press	70	Compost	Rockland Co Co-Composting Fac.	
SUFFERN (V) STP	22748	1.800	1.500	Anaerobic Digestion	Centrifuge	130	Compost/Inc.	Rockland Co Co-Compost/NJ	
SULLIVAN COUNTY									
BLOOMINGBURG (V) WWTP	208426	0.024		Septic Tank	None	4	Store On-site		
DELAWARE (T)-CALLICOON SD	110574	0.120		Aerobic Digestion	Drying Beds	10	Landfill	Delaware Co LF	
DILLON FARMS SD	214507	0.002	0.001	Septic Tank	None	1	Landfill	Sent to Kiamesha Lake	
EMERALD GREEN/LOUISE MARIE SD	35645	0.410	0.307	Aerobic Digestion	None	15	Landfill	Sent to Kiamesha Lake	
GRAHAMSVILLE STP	26549	0.180	0.055	Aerobic Digestion	Drying Beds	20	Landfill	Sullivan Co LF	
JEFFERSONVILLE (V) WWTP	109029	0.120	0.059	Aerobic Digestion	Drying Beds	15	Landfill	By Roto-Rooter at Narrowsburg	
KAUNEONGA LAKE STP	99368	0.600	0.155	Aerobic Digestion	Drying Beds	50	Landfill	Seneca Meadows LF	
KIAMESHA LAKE STP	30724	2.000	0.309	Aerobic Digestion	Plate & Frame Press	50	Landfill	Seneca Meadows LF	
LAKE HUNTINGTON STP	30694	0.210	0.046	Imhoff Tank	Drying Beds	5	Land Apply	By Lang EnviroVentures	
LIBERTY (V) WWTP	30074	2.000	0.917	Aerobic Digestion	Belt Filter Press	192	Incinerate	Synagro Northeast	
LIVINGSTON MANOR STP	25437	0.800	0.232	Aerobic Digestion	Drying Beds	30	Landfill/Lagoon	By EnviroVentures to PA	
LOCH SHELDRAKE WWTP	24538	0.700		Anaerobic Digestion	Drying Beds	13	Landfill	Out-of-State	
LOOMIS WWTP	30261	0.080	0.050	Septic Tank	None	6	Land Apply	Sent to Swan Lake	
MELODY LAKE SD STP	30708	0.038	0.006	None	None	1	Landfill	Sent to Kiamesha Lake	
MONTICELLO (V) STP	22454	3.100	2.080	None	Belt Filter Press	360	Landfill	Seneca Meadows LF	
MOUNTAINDALE SD	145696	0.180		Lagoon	None	5	Lagoon		

NARROWSBURG SEWER DISTRICT	110205	0.100		Septic Tank	None	10	Landfill	By Lang Industries to PA
ROSCOE STP	34983	0.200	0.056	Aerobic Digestion	Drying Beds	7	Landfill	By EnviroVentures to PA
SACKETT LAKE SD STP	30716	0.500	0.234	Aerobic Digestion	Drying Beds	20	Landfill	Sent to Kiamesha Lake
SOUTH FALLSBURG (T) WWTP	24520	3.260		Anaerobic Digestion	Belt Filter Press	158	Landfill	by Lang Enviroventures
SWAN LAKE WWTP	30252	0.425	0.150	Aerobic Digestion	Drying Beds	29	Land Apply	By Enviroventures
WOODRIDGE (V) WWTP	23493	0.790	0.714	Lagoon	None	80	Lagoon	On-site
ULSTER COUNTY								
ELLENVILLE (V) STP	34002	0.800	0.345	Anaerobic Digestion	Drying Bed	55	Landfill	By Pike Co Env. to PA
GARDINER (T) SD#1	109096	0.057	0.040	Septic Tank	None	4	Incinerate	Sent to Poughkeepsie
GLASCO WWTP	145564	0.424	0.253	Aerobic Digestion	Belt Filter Press	31	Landfill	Sent to UCRRA
HIGHLAND WWTP	24295	1.250	0.994	Aerobic Digestion	Belt Filter Press	189	Landfill	High Acres LF/BFI LF
KERHONKSON SEWER IMPROV. AREA	109924	0.075	0.056	Aerobic Digestion	Drying Beds	10	Landfill	By Ulster Co Resource Recovery
KINGSTON (C) WWTF	29351	6.800	5.500	Anaerobic Digestion	Belt Filter Press	530	Heat Dry	On-site
MALDEN-ON-HUDSON WWTP	145556	0.100	0.056	Aerobic Digestion	None	15	Landfill	Sent to Glasco
MARLBORO STP	109720	0.175	0.130	Aerobic Digestion	Plate & Frame Press	30	Landfill	By Ulster Co Resource Recovery
MILTON WWTP	259829	0.055	0.020	Aerobic Digestion	None	6	Landfill	Sent to Beacon
NAPANOCH SEWER IMP AREA	29718	0.525		Imhoff Tank	Belt Filter Press	50	Landfill	Niagara Recycling LF
NEW PALTZ (V) WWTP	30082	1.500	1.000	Anaerobic Digestion	Belt Press/Dry Beds	120	Landfill	By Ulster Co Resource Recovery
OHIOVILLE WWTP	109886	0.015	0.011	Imhoff Tank	Drying Beds	8	Landfill	By Ulster Co Resource Recovery
PINE HILL STP	26557	0.119	0.137	Imhoff Tank	Plate & Frame	50	Landfill	By Spectraserv Inc.
ROSENDALE (T) WWTF	109061	0.100	0.080	Aerobic Digestion	Plate & Frame Press	38	Landfill	By Ulster Co Resource Recovery
SAUGERTIES (DOCK STREET) STP	31208	1.350	0.860	Anaerobic Digestion	Belt Filter Press	159	Compost/Landfill	A&M Compost/Pioneer Crossing LF
ULSTER (T) S I A TRT PLT	21563	1.260	0.942	Anaerobic Digestion	Dry Beds/Belt Press	180	Landfill	By Ulster Co Resource Recovery
WALLKILL SD STP	21521	0.635	0.473	Aerobic Digestion	Plate & Frame Press	82	Landfill	Sent to Beacon
WHITTIER WWTP	21571	0.100	0.100	Imhoff Tank	Drying Beds	10	Landfill	By Ulster Co Resource Recovery
WOODSTOCK (T) WWTF	109711	0.230	0.150	Septic Tank	None	20	Compost	Sent to Saugerties
WESTCHESTER COUNTY								
BLIND BROOK SD WWTP	26719	5.000	3.800	None	None	530	Incinerate	Sent to Port Chester
BUCHANAN (V) WWTP	29971	0.500	0.250	Anaerobic Digestion	None	440	Incinerate	By Fred Cook, Inc to PVSC
MAMARONECK SANITARY SD WWTP	26701	20.600	13.800	None	None	3000	Landfill	Sent to New Rochelle STP
NEW ROCHELLE SD	26697	13.600	15.800	None	Belt Filter Press	6251	Landfill	Atlantic Wase Disposal LF

NORTH CASTLE (T) SD#2	109584	0.450	0.347	Aerobic Digestion	None	100	Landfill	By Spectraserv Inc.
OSSINING SANITARY SD WWTP	108324	7.000		None	Centrifuge	1216	Landfill/Land Apply	By Spectraserv Inc.
PEEKSKILL SANITARY SD WWTP	100803	10.000	6.080	Anaerobic Digestion	None	770	Incinerate	Sent to Passaic Valley Sewer Comm
PORT CHESTER SANITARY SD WWTP	26786	6.000	4.900	None	None	1475	Incinerate	Sent to Passaic Valley Sewer Comm
WILD OAKS SD	65706	0.060	0.038	Holding Tank	None	13	Landfill	Earthcare - All County
YONKERS JOINT WWTP	26689	120.000	91.000	Anaerobic Digestion	Centrifuge	9400	Land Apply	By Natural Soil Product
YORKTOWN HEIGHTS SD WWTP	26743	1.500	1.390	Anaerobic Digestion	Belt Filter Press	237	Compost	Town Property

FACILITY NAME	SPDES #	FLOW, DESIGN	MGD ACTUAL	SLUDGE TREATMENT METHOD	DEWATERING DEVICE	DRY TONS PER YEAR	USE/DISPOSAL METHOD	LOCATION
DEC REGION 4								
ALBANY COUNTY								
ALBANY CO SD NORTH WWTP	26875	35.000	21.840	Aerobic Digestion	Belt Filter Press	5364	Incinerate	On-site
ALBANY CO SD SOUTH WWTP	26867	29.000	22.420	Aerobic Digestion	Belt Filter Press	3733	Incinerate	On-site
ALTAMONT (V) STP	31534	0.420	0.216	Aerobic Digestion	None	45	Incinerate	Sent to Albany South
CEDAR HILL WPCP	25739	6.000	4.200	None	None	633	Incinerate	Sent to Albany North
COEYMANS-RAVENA PCF	22772	0.820	0.641	None	None	117	Incinerate	Sent to Albany South
MOHAWK VIEW WPCP	27758	6.000	3.700	Lime Stabilization	Belt Filter Press	1085	Landfill	Colonie LF
NOTT ROAD STP	22225	3.600	2.040	Aerobic Digestion	Belt Filter Press	254	Landfill	Ontario LF
PARK GUILDERLAND NE IND WWTP	22217	0.360	0.186	Aerobic Digestion	Drying Beds	24	Landfill	Albany LF
PLEASANT ST. SD NO. 2	107051	0.004	0.002	Septic Tank	None	1	Incinerate	Sent to Albany South
RENSELAERVILLE (T) WWTF	240770	0.018	0.008	Septic Tank	None	1	Incinerate	Sent to Albany Co. South
VOORHEESVILLE (V) SD#1 STP	30139	0.070	0.040	Aerobic Digestion	None	15	Landfill	Albany LF
COLUMBIA COUNTY								
CHATHAM (V) WWF	23582	0.365	0.315	Aerobic Digestion	Drying Beds	57	Store On-site	On-site
COLUMBIA CO COM CTR W & SD	240401	0.050	0.023	Aerobic Digestion	None	12	Contract Hauler	Bruno farm
GERMANTOWN (T) WWTF	260479	0.100	0.022	Aerobic Digestion	None	2	Landfill	By Bill Baldwin & Sons Inc.
GREENPORT (T) STP	30988	1.350	0.527	Aerobic Digestion	Belt Filter Press	151	Incinerate/Landfill	Albany South/PA landfill
HILLSDALE WWTP	268771	0.035	0.008	None	None	1	Store On-site	On-site
HUDSON (C) STP	22039	2.800	1.852	None	Belt Filter Press	400	Landfill	Ontario Co LF
KINGS ACRES STP	31291	0.060		Aerobic Digestion	None	6	Incinerate	Sent to Albany South
PHILMONT STP	30996	0.250	0.130	Aerobic Digestion	None	29	Incinerate	Sent to Albany South
VALATIE (V) STP	21806	0.250		Aerobic Digestion	Drying Beds	15	Incinerate	Sent to Albany Co North
DELAWARE COUNTY								
DELHI (V) WPCP	20265	1.015	0.688	Aerobic Digestion	Belt Filter Press	360	Compost	Delaware Co Co-Composting Fac.
DENVER SEWER CORP WWTP	99562	0.035	0.015	Aerobic Digestion	None	1	Compost	Delaware Co Co-Composting Fac.
FLEISCHMANN'S (V) WWTF	261521	0.240	0.029	Aerobic Digestion	None	7	Compost	Sent to Stamford
GRAND GORGE STP	26565	0.500	0.131	Imhoff Tank	Plate & Frame	212	Landfill	By Earthcare to NJ

HANCOCK (V) STP	89702	0.350	0.155	Aerobic Digestion	Drying Beds	90	Compost	Delaware Co Co-Composting Fac.
HOBART (V) PCF	29254	0.180	0.070	Aerobic Digestion	Plate & Frame Press	26	Compost	Delaware Co Co-Composting Fac.
MARGARETVILLE (V) STP	26531	0.400	0.156	Aerobic Digestion	Drying Beds	38	Compost	Delaware Co Co-Composting Fac.
SIDNEY (V) WWTP	29271	1.700	0.455	Aerobic Digestion	Plate & Frame Press	174	Landfill	Modern LF
STAMFORD (V) WWTP	21555	0.500	0.398	Aerobic Digestion	Belt Filter Press	83	Compost	Delaware Co Co-Composting Fac.
WALTON (V) WWTP	27154	1.550	1.106	Aerobic Digestion	Belt Filter Press	550	Compost	Delaware Co Co-Composting Fac.
GREEN COUNTY								
ATHENS (V) WWTP	20869	0.400	0.244	Aerobic Digestion	Drying Beds	10	Compost	Sent to Schenectady
BRICK ROW WWTP	20877	0.015	0.008	Aerobic Digestion	Drying Beds	1	Compost	Sent to Schenectady
CAIRO SEWER DISTRICT	260819	0.089	0.050	Septic Tank	None	13	Landfill	Sent to Tannersville
CATSKILL (T) SD#4	205044	0.023		Anaerobic Digestion	Drying Beds	3	Store On-site	
CATSKILL (V) WWTP	20389	1.550	1.000	None	Belt Filter Press	132	Incinerate	By NETCO
COXSACKIE (V) STP	33545	1.250	0.750	Aerobic Digestion	None	150	Incinerate	Sent to Albany North
HUNTER (V) WWTF	241075	0.326	0.133	Aerobic Digestion	Belt Filter Press	30	Landfill	High Acres LF
NEW BALTIMORE (T) SD STP	109151	0.060	0.020	Aerobic Digestion	Drying Beds	3	Landfill	Albany LF
PRATTSVILL (T) WWTF	263028	0.086	0.020	Aerobic Digestion	Plate & Frame Press	7	Landfill	MOSA LF
TANNERSVILLE STP	26573	0.800	0.161	Lime Stabilization	Plate & Frame	190	Landfill	By EarthCare to NJ
MONTGOMERY COUNTY								
AMSTERDAM (C) WWTP	20290	10.000	7.240	Anaerobic Digestion	Belt Filter Press	1500	Landfill	Ontario Co LF
CANAJOHARIE (V) WWTP	23485	2.850	1.188	Aerobic Digestion	Belt Filter Press	217	Landfill	Seneca Meadows LF
FONDA-FULTONVILLE WWTP	32433	1.200	0.600	Aerobic Digestion	None	109	Landfill	Sent to Gloversville/Johnstown
MONTGOMERY CO SD#1 STP	107565	1.000	0.768	Aerobic Digestion	None	73	Landfill	Sent to Gloversville/Johnstown
ST JOHNSVILLE (V) WWTP	24333	2.000	0.902	Aerobic Digestion	None	22	Landfill	Sent to Gloversville/Johnstown
OTSEGO COUNTY								
COOPERSTOWN (V) STP	23591	0.750	0.420	Anaerobic Digestion	Drying Beds	136	Landfill	Seneca Meadows LF
ONEONTA (C) WWTP	31151	4.000	2.050	Anaerobic Digestion	Belt Press/Dry Beds	500	Landfill	Hyland LF
RICHFIELD SPRINGS (V) STP	31411	0.600	0.400	Aerobic Digestion	Drying Beds	30	Land Apply	Sent to Herkimer Co
RENSSELAER COUNTY								
CASTLETON-ON-HUDSON	30970	0.240	0.143	Aerobic Digestion	Vacuum Filter	39	Landfill	Albany LF
EAST GREENBUSH (T) WWTP	26034	2.500		None	None	569	Incinerate	Sent to Albany South
HOOSICK FALLS (V) WWTP	24821	4.000	1.500	None	Dewatering Drum	165	Incinerate	Sent to Albany County North

RENSSELAER COUNTY SD#1 WWTP	87971	24.000	16.590	Wet Air Oxidation	Vacuum Filter	1442	Landfill	On-site
SCHODACK (T) SD#5	242012	0.010	0.005	Septic Tank	None	1	Landfill	Sent to Rensselaer Co SD#1
VALLEY FALLS (V) WWTF	261360	0.060	0.020	Septic Tank	None	5	Landfill	Sent to Rensselaer Co SD#1
SCHENECTADY COUNTY								
DUANESBURG/DELANSON SD#1	261271	0.100	0.039	Aerobic Digestion	None	9	Incinerate	Sent to Albany North
MARIAVILLE LAKE SD#2	268437	0.100	0.032	Aerobic Digestion	None	5	Incinerate	Sent to Albany North
NISKAYUNA (T) SD#6 WWTP	23973	3.000	2.218	Anaerobic Digestion	Belt Filter Press	215	Landfill	Fulton Co LF
RIVERVIEW LANDING STP	131768	0.015	0.008	Septic Tank	None	2	Incinerate	Sent to Saratoga County SD#1
ROTTERDAM SD#2 STP	20141	1.500	0.878	None	Belt Filter Press	300	Compost	Sent to Schenectady
SCHENECTADY (C) WPCP	20516	18.500	14.050	Anaerobic Digestion	Centrifuge/Belt Pres	2475	Compost	On-site
SCHOHARIE COUNTY								
COBLESKILL (V) WPCP	24201	1.800	0.643	Aerobic Digestion	Belt Press/Dry Beds	200	Landfill	Hyland LF
MIDDLEBURGH (V) WWTP	192309	0.090	0.070	Aerobic Digestion	Plate & Frame Press	13	Landfill	Fulton Co LF
RICHMONDVILLE WWTP	22519	0.200	0.078	Imhoff Tank	Drying Beds Dry	20	Landfill	Sent to Cobleskill
SCHOHARIE (V) STP	23655	0.325	0.106	Aerobic Digestion	Bed/Plate&FrameP	25	Landfill	Fulton Co LF Waste Management Fred Sanitation
SHARON SPRINGS (V) STP	33588	0.430	0.180	Septic Tank	Drying Beds	10	Landfill	

FACILITY NAME	SPDES #	FLOW, DESIGN	MGD ACTUAL	SLUDGE TREATMENT METHOD	DEWATERING DEVICE	DRY TONS PER YEAR	USE/DISPOSAL METHOD	LOCATION
DEC REGION 5								
CLINTON COUNTY								
CADYVILLE WWTP	255751	0.006	0.006	Aerobic Digestion	Drying beds	1	Landfill	Clinton Co LF
CHAMPLAIN (V) WWTF	32204	0.650	0.193	Aerobic Digestion	Belt Filter Press	20	Landfill	Franklin Co LF
CHAZY (T) WWTF	255971	0.085	0.032	Aerobic Digestion	Reed Beds	4	Reed Beds	
DANNEMORA (V) WWTP	22195	1.500	0.774	Aerated Lagoon	None	85	Lagoon	On-site
KEESEVILLE (V) WPCP	25097	0.400	0.313	Aerobic Digestion	Belt Press/Dry Bed	66	Landfill	Franklin Co LF
LYON MOUNTAIN SD WWTP	239577	0.060	0.020	Septic Tank	Reed Beds	2	Reed Beds	On-site
PERU (T) WPCP	23949	0.500	0.190	Aerobic Digestion	Plate & Frame Press	53	Landfill	Franklin Co LF
PLATTSBURGH (C) WPCP	26018	16.000	5.000	None	Belt Filter Press	2100	Landfill	Franklin Co LF/Waste USA LF
ROUSES POINT (V) WWTP	21831	2.000	0.712	None	Belt Filter Press	120	Landfill	Franklin Co LF
VALCOUR SD WWTF	183636	0.050	0.003	Septic Tank	None	1	Store On-site	
ESSEX COUNTY								
AUSABLE FORKS COMM WWTF	201910	0.147	0.070	Lagoon	None	8	Lagoon	On-site
CROWN POINT SD#1 WWTF	239844	0.060	0.060	Septic Tank	None	8	Land Apply	Sent to Ticonderoga
LAKE PLACID (V) WPCP	22187	2.100	1.070	Anaerobic Digestion	Belt Filter Press	150	Landfill	Franklin Co LF
PORT HENRY/MORIAH JOINT WWTF	22969	0.660	0.495	Aerobic Digestion	Belt Filter Press	60	Landfill	Franklin Co Regional LF
SARANAC LAKE (V) WPCP	21733	2.800	2.620	Anaerobic Digestion	Belt Filter Press Belt Pre/Drying Beds	191	Landfill	Franklin Co LF
SCHROONLAKE WPCP	20231	0.350	0.186	Aerobic Digestion	None	93	Landfill	Franklin Co. LF
ST ARMAND (T) SD WWTP	20991	0.060	0.026	Aerated Lagoon	None	4	Lagoon	On-site
TICONDEROGA SD#5 WPCP	36706	1.700	1.250	Aerobic Digestion	Belt Filter Press	226	Land Apply	Leerke farm
WADHAMS SD WWTP	217760	0.015	0.005	Septic Tank	None	1	Land Apply	Sent to Ticonderoga
WESTPORT SD#1 WWTP	20222	0.135	0.128	None	Reed Beds	20	Reed Beds	
WILLSBORO SD#1 WWTF	239682	0.125	0.036	Aerobic Digestion	Drying Beds	10	Landfill	Franklin Co LF
WINEBROOK HILLS SD STP	23132	0.050	0.015	Aerobic Digestion	Drying Beds	2	Store On-site	Ons-site
FRANKLIN COUNTY								
BRAINARDSVILLE SD#1 WWTP	255726	0.026	0.007	Septic Tank	None	1	Landfill	Sent to Malone
CHATEAUGAY (V) WWTP	24830	0.550	0.559	Lagoon	None	60	Lagoon	On-site

HIGH STREET WWTP	27863	0.058	0.035	None	Reed Beds	4	Reed Beds	On-site
MALONE (V) WWTP	30376	3.300	2.300	Anaerobic Digestion	Belt Filter Press	170	Landfill	Franklin Co Regional LF
ST REGIS FALLS WWTP	255858	0.115	0.054	Aerobic Digestion	Drying Beds	6	Landfill	Franklin Co LF
TUPPER LAKE (V) WPCP	29939	4.500	1.200	Imhoff Tank	Belt Filter Press	250	Landfill	Franklin Co LF
FULTON COUNTY								
BROADALBIN (V) WWTP	251739	0.150	0.089	Aerobic Digestion	Drying beds	21	Landfill	Fulton Co LF
GLOVERSVILLE-JOHNSTOWN	26042	13.000	5.900	Anaerobic Digestion	Belt Filter Press	2566	Landfill	Fulton Co LF
MAYFIELD (V) STP	252042	0.125	0.063	Aerobic Digestion	Drying beds	20	Landfill	Sent to Gloversville-Johnstown
NORTHAMPTON (T) WWTP	30066	0.075	0.041	Imhoff Tank	None	7	Landfill	Sent to Gloversville/Johnstown
HAMILTON COUNTY								
INDIAN LAKE SD#1 WWTF	23329	0.140	0.110	Aerobic Digestion	None	11	Incinerate	Sent to Glens Falls
SPECULATOR (V) WWTP	26484	0.300	0.080	Aerobic Digestion	Drying Beds	10	Land Apply	Village site
SARATOGA COUNTY								
CORINTH (V) WWTP	20397	0.600	0.402	None	None	50	Incinerate	Sent to Glens Falls
HADLEY (T) STP	20184	0.050	0.034	Imhoff Tank	None	7	Incinerate	Sent to Glens Falls
SARATOGA CO SD# 1 WWTP	28240	21.300	13.200	None	Belt Filter Press	4029	Incinerate	On-site
SCHUYLERVILLE (V) WWTP	31941	0.260	0.345	Aerobic Digestion	Drying Beds	40	Landfill	Fulton Co LF
STILLWATER (V) STP	93637	0.300	0.298	Aerobic Digestion	None	32	Incinerate	Sent to Saratoga Co SD#1
WATERFORD (T) WWTP	29173	1.500	1.100	Aerobic Digestion	None	212	Incinerate	Sent to Saratoga Co SD#1
OLD KNOTT FARM STP	34223	0.035	0.020	Aerat. Holding Tank	None	2	Incinerate	Sent to Saratoga County SD#1
WARREN COUNTY								
BOLTON (T) WWTP	93688	0.300	0.160	Imhoff Tank	None	25	Incinerate	Sent to Glens Falls
GLENS FALLS (C) WWTP	29050	9.500	4.700	None	Belt Filter Press	1723	Incinerate	On-site
HAGUE (T) SD#1 WWTP	265217	0.086	0.012	Aerobic Digestion	Drying beds	5	Land Apply	Sent to Ticonderoga
LAKE GEORGE (V) STP	94366	1.750	0.660	Anaerobic Digestion	Belt Filter Press	232	Compost	Washington Co Compost fac.
WARRENSBURG (T) STP	248720	0.250	0.163	Lagoon	None	18	Lagoon	On-site
WASHINGTON COUNTY								
FORT ANN (V) STP	30627	0.110	0.000	Imhoff Tank	None	10	Compost	Washington Co Compost fac.
GRANVILLE (V) WWTP	21547	1.300	0.700	Imhoff Tank	Belt Filter Press	114	Compost	Washington Co Compost fac.
GREENWICH (V) WWTP	131555	0.050	0.030	Aerobic Digestion	Drying Beds	6	Compost	Washington Co Compost fac.
HULETTS LANDING SD#1	248983	0.028	0.020	Septic Tank	None	2	Landfill	By Doran Waste in VT

WASHINGTON CO SD# 2 WWTP	183695	2.250	2.150	Anaerobic Digestion	Belt Filter Press	499	Compost	On-site
WHITEHALL (V) STP	24929	0.600	0.582	Aerobic Digestion	Drying Beds	74	Landfill	By Casella in VT

•

FACILITY NAME	SPDES #	FLOW, DESIGN	MGD ACTUAL	SLUDGE TREATMENT METHOD	DEWATERING DEVICE	DRY TONS PER YEAR	USE/DISPOSAL METHOD	LOCATION
DEC REGION 6								
HERKIMER COUNTY								
DOLGEVILLE (V) WWTP	24554	1.000	0.820	Anaerobic Digestion	Belt Filter Press	85	Landfill	Oneida Herkimer LF
HERKIMER (V) WPCP	20486	1.700	0.900	Aerobic Digestion	Belt Filter Press	311	Landfill	Oneida/Herkimer LF
HERKIMER CO SD WWTP FAC	36528	6.100	4.149	Lime Stabilization	Belt Filter Press	900	Land Apply	LBD Enterprise
LITTLE FALLS (C) WWTP	22403	7.000	4.550	None	Belt Filter Press	830	Incinerate	On-site
OLD FORGE SD WWTP	21351	0.850	0.112	Aerobic Digestion	None	30	Landfill	Sent to Carthage
JEFFERSON COUNTY								
ADAMS (V) WWTF	34771	0.450	0.120	Aerobic Digestion	Drying beds	20	Landfill	High Acres LF
ALEXANDRIA BAY WWTP	22501	0.750	0.260	Aerobic Digestion	None	24	Incinerate	Sent to Watertown
ANTWERP (V) WWTF	235890	0.120	0.068	Septic Tank	None	10	Landfill	Sent to Carthage
BROWNVILLE (V) STP	31232	0.650	0.210	None	None	45	Landfill	Sent to Carthage
CAPE VINCENT (V) STP	21393	0.140	0.158	Aerobic Digestion	None	20	Landfill	Sent to Carthage
CARTHAGE/WEST CARTHAGE WPCF	25151	4.000	1.405	Lime Stabilization	Plate & Frame Press	1709	Landfill	DANC LF
CHAUMONT (V) WWTP	257851	0.100	0.035	Septic Tank	None	6	Incinerate	Sent to Watertown
CLAYTON (V) STP	27545	1.100	0.482	Aerobic Digestion	None	112	Landfill	Sent to Carthage
DEFERIET (V) STP	20931	0.041	0.024	Aerobic Digestion	None	9	Landfill	Sent to West Carthage
DEPAUVILLE STP	215791	0.034	0.018	Septic Tank	None	4	Incinerate	Sent to Watertown
DEXTER (V) STP	31461	0.250	0.224	Aerobic Digestion	None	28	Landfill	Sent to Carthage
EVANS MILLS (V) WWTF	24660	0.100	0.044	Aerobic Digestion	None	2	Store On-site	
HERRINGS (V) WWTF	236306	0.013	0.009	Septic Tank	None	1	Landfill	Sent to West Carthage
LAFARGEVILLE WWTF	121070	0.064	0.067	Lagoon	None	6	Lagoon	On-site
ORLEANS/ALEXANDRIA JOINT WWTF	258059	0.197	0.049	Aerobic Digestion	None	7	Incinerate	Sent to Watertown
PHILADELPHIA (V) WWTP	33022	0.200	0.129	Aerobic Digestion	None	21	Incinerate	Sent to Watertown
REDWOOD SD WWTP	215911	0.042	0.023	Septic Tank	None	11	Incinerate	Sent to Watertown
SACKETS HARBOR (V) STP	27014	0.600	0.370	Aerobic Digestion	Drying Beds	45	Landfill	DANC LF
THERESA (V) WWTF	207004	0.045	0.028	Septic Tank	None	18	Incinerate	Sent to Watertown
THOUSAND ISLAND PARK STP	30686	0.190	0.069	Aerobic Digestion	Drying Beds	2	Landfill	DANC LF

WATERTOWN (C) WPCP	25984	16.000	11.300	Anaerobic Digestion	Plate & Frame Press	2068	Incinerate	On-site
WATERTOWN (T) SD#1	99091	0.056	0.034	Septic Tank	None	5	Landfill	Sent to Carthage/West Carthage
LEWIS COUNTY								
CASTORLAND (V) WWTP	33511	0.045	0.092	Lagoon	None	10	Lagoon	On-site
CONSTABLEVILLE (V) STP	110418	0.039		Septic Tank	None	3	Store On-site	
COPENHAGEN (V) WWTF	257711	0.110	0.097	Lagoon	None	10	Lagoon	On-site
CROGHAN (V) WWTF	206768	0.070	0.038	Septic Tank	None	6	Landfill	Sent to West Carthage
GLENFIELD SD STP	20281	0.060	0.033	Septic Tank	None	4	Contract Hauler	On-site
LOWVILLE (V) MUNICIPAL PCP	20125	1.800	1.100	Lagoon	None	130	Lagoon	On-site
LYONS FALLS (V) WWTF	257737	0.072	0.037	Septic Tank	None	4	Landfill	DANC
PORT LEYDEN (V) STP	30341	0.055	0.046	Imhoff Tank	Drying Beds	10	Landfill	DANC LF
ONEIDA COUNTY								
BOONVILLE (V) WWTP	20494	1.100	0.401	Aerobic Digestion	Belt Filter Press	80	Landfill	Oneida-Herkimer LF
CAMDEN (V) WTP	21377	0.800	0.230	Aerobic Digestion	Belt Press/Dry Beds	53	Land Apply	Village Owned Property
CLARK MILLS SD WWTP	29076	0.200	0.189	Aerobic Digestion	Belt Filter Press	40	Landfill	AVA LF
CLINTON (V) STP	21385	2.500	1.300	Aerobic Digestion	Belt Filter Press	163	Landfill	Madison County LF
EAST ONEIDA LAKE SD WWTF	36790	2.000	1.000	Aerobic Digestion	Belt Filter Press	174	Landfill	Ava LF
FORESTPORT (T) WWTP	236756	0.024	0.008	Septic Tank	None	2	Landfill	Sent to Boonville
ONEIDA COUNTY WPCP	25780	53.000	36.600	None	Belt Filter Press	6173	Incinerate	On-site
ORISKANY FALLS (V) WWTP	20923	0.090	0.061	Septic Tank	None	7	Store On-site	On-site
ROME MUNICIPAL STP	30864	12.000	7.000	Anaerobic Digestion	Belt Filter Press	700	Landfill	Oneida-Herkimer SWA
SHERRILL (C) STP	22110	0.950	0.490	None	Belt Press/Dry Beds	110	N-Viro/Landfill	At LeRoy facility/Ava LF
TABERG SD WWTF	257001	0.032	0.003	Septic Tank	None	1	Store On-site	On-site
VERNON (V) STP	20249	0.813	0.267	Aerobic Digestion	None	12	N-Viro	Sent to Sherrill
WATERVILLE (V) STP	28461	0.300	0.150	Aerobic Digestion	Belt Filter Press	17	Compost/Land App.	On-site
SAINT LAWRENCE COUNTY								
BRASHER FALLS SD#1 STP	30732	0.200	0.097	Lagoon	None	11	Lagoon	Onsite
CANTON (V) WPCP	236586	4.200	0.830	Lagoon	None	350	Lagoon	On-site
COLTON SD#1 STP	22012	0.069	0.039	Aerobic Digestion	None	5	Contract Hauler	By Casella Waste Stream Inc
DEKALB JUNCTION STP	34762	0.075	0.029	Septic Tank	None	3	Land Apply	Sent to Heuvelton
EDWARDS (V) WWTP	23809	0.080	0.039	Aerobic Digestion	None	6	Landfill	Sent to Carthage

GOUVERNEUR (T) SD#1 STP	236438	0.080	0.045	Lagoon	None	5	Lagoon	
GOUVERNEUR (V) WWTF	20117	3.500		Lagoon	None	50	Lagoon	On-site
HAMMOND (V) STP	33561	0.040	0.031	Lagoon	None	4	Lagoon	On-site
HERMON (V) STP	257532	0.060	0.012	Lagoon	None	3	Lagoon	On-site
HEUVELTON (V) WPCP	27146	0.450	0.193	Aerated Lagoon	None	35	Land Apply	Heuvelton
LISBON (H) SD	257559	0.050	0.030	Aerobic Digestion	None	3	Landfill	Sent to Gloversville/Johnstown
MADRID SD#1 WPCP	24635	0.125	0.062	Aerobic Digestion	None	8	Landfill	Sent to Carthage
MASSENA (V) WWTP	31194	4.800	2.600	Anaerobic Digestion	Belt Filter Press	340	Landfill	Seneca Meadows LF
MORRISTOWN (V) WWTF	206997	0.060	0.033	Septic Tank	None	4	Landfill	Sent to Ogdensburg
N LAWRENCE & NICHOLVILLE STP	110116	0.038	0.034	Septic Tank	None	5	Lagoon	Sent to Canton (V)
NORFOLK (T) SD#1	23604	0.155		Lime Stabilization	None	10	Land Apply	Waste Stream Inc.
NORWOOD (V) WPCP	21369	1.000	0.420	Lagoon	None	46	Lagoon	On-site
OGDENSBURG SECONDARY WWTP	29831	6.500	3.800	Anaerobic Digestion	Plate & Frame Press	456	Landfill	DANC LF
POTSDAM (T) SD#1	23337	0.043		Aerobic Digestion	None	1	Store On-site	
POTSDAM (V) WPCP	20818	3.500	2.200	Anaerobic Digestion	None	250	Land Apply	Waste Stream I. (Gilbert Farm)
RENSELAER FALLS (V) WWTP	257613	0.053	0.028	Septic Tank	None	3	Land Apply	Sent to Heuvelton
WADDINGTON (V) WWTP	30180	0.260	0.208	Imhoff Tank	Drying Beds	39	Landfill	DANC
WANAKENA SD#1	34533	0.020	0.020	Septic Tank	None	1	Contract Hauler	

FACILITY NAME	SPDES #	FLOW, DESIGN	MGD ACTUAL	SLUDGE	DEWATERING	DRY TONS PER YEAR	USE/DISPOSAL METHOD	LOCATION
				TREATMENT METHOD				
DEC REGION 7								
BROOME COUNTY								
BINGHAMTON-JOHNSON CITY	24414	20.000		Anaerobic Digestion	Belt Filter Press	3820	Landfill	Broome County LF
CHENANGO (T) SD#10	233200	0.040	0.011	Septic Tank	None	2	Compost	Sent to Northgate
CHENANGO NORTHGATE WWTP	213781	0.800	0.520	Aerobic Digestion	Belt Filter Press	84	Compost	On-site
DEPOSIT (V) WPCP	29211	0.700	0.341	Aerobic Digestion	Belt Filter Press	38	Compost	Delaware Co Co-Composting Fac.
ENDICOTT (V) WPCP	27669	10.000	7.000	Anaerobic Digestion	Belt Filter Press	503	Compost	On-site
PARKWOOD SD	213934	0.004	0.004	Septic Tank	None	1	Landfill	Sent to Binghamton/Johnson City
PINE VALLEY SUBDIV SD#1	90662	0.006	0.006	Septic Tank	None	1	Contract Hauler	Windsor farms by James Colpitt
PINE VALLEY SUBDIV SD#11-RAISH	156825	0.006	0.006	Septic Tank	None	1	Contract Hauler	Windsor farm by James Colpitts
PORTER HOLLOW ROAD SD	156299	0.006	0.002	Septic Tank	None	1	Landfill	Sent to Binghamton/Johnson City
WHITNEY POINT STP	262552	0.150	0.043	Aerobic Digestion	Belt Filter Press	5	Land Apply	Sent to Bath
CAYUGA COUNTY								
AUBURN (C) STP	21903	12.000	8.630	None	Belt Filter Press	3130	Landfill	Ontario Co LF
AURORA (V) WWTP	23558	0.300	0.095	Aerobic Digestion	Drying Beds	18	Compost	At Weedsport Composting fac.
CAYUGA (V) WPCP	25241	0.100	0.079	Lagoon	None	10	Lagoon	On-site
MORAVIA (V) WWTP	22756	0.600	0.365	Aerobic Digestion	Belt Filter Press Drying Beds	80	Compost/Landfill	A&M Compost Fac. in PA
PORT BYRON (V) WWTP	20338	0.285	0.082	Aerobic Digestion	(Covered	16	Landfill	Auburn LF
UNION SPRINGS (V) STP	24228	0.330	0.124	Imhoff Tank	Belt Press/Dry Beds	30	Landfill	Seneca Meadows LF
WEEDSPORT (V) WWTP	20559	0.300		Aerobic Digestion	Belt Press/Dry Beds	50	Compost	On-site
CHENANGO COUNTY								
BAINBRIDGE (V) WWTF	30597	0.318	0.160	Aerobic Digestion	Screw Press	40	Landfill	Chenango County LF
GREENE (V) WWTP	21407	0.450	0.209	Anaerobic Digestion	Drying Beds	25	Compost	On-site
NORWICH (C) WWTP	21423	2.500	1.960	Anaerobic Digestion	Drying Beds	280	Landfill	Chenango Co LF
OXFORD (V) STP	156876	0.200	0.125	Aerobic Digestion	Belt Filter Press	34	Landfill	Chenango Co LF
SHERBURNE (V) WWTP	21466	0.427	0.225	Anaerobic Digestion	Drying Beds	45	Landfill	Pharsalia LF
SMYRNA (V) WWTS	244287	0.020	0.015	Septic Tank	None	2	Landfill	Sent to Sherburne

CORTLAND COUNTY

CUYLER (T) SD#1	90867	0.010	0.006	Septic Tank	None	1	Contract Hauler	By NorSent top Septic Service
LE ROY R SUMMERSON WWTF	27561	9.000	4.830	Anaerobic Digestion	Belt Filter Press	800	Landfill	Cortland Co LF
MARATHON (V) WWTF	28363	0.200	0.087	Aerobic Digestion	Drying Bed	36	Landfill	Cortland Co LF
VIRGIL (T) SD1 WWTP	27197	0.080	0.026	Lime Stabilization	None	3	Landfill	Sent to Ithaca

MADISON COUNTY

CANASTOTA (V) WPCP	29807	1.730	1.330	Imhoff Tank	Belt Filter Press	249	Land Apply	by LBD Enterprises
CHITTENANGO (V) STP	21539	1.300	0.650	Aerobic Digestion	Belt Filter Press	144	Land Apply	Tag Road
HAMILTON (V) WPCP	20672	0.850	0.490	Aerobic Digestion	Belt Press/Dry Beds	70	Landfill	Madison Co LF
MADISON SD-CAZENOVIA WWTP	28525	0.950	0.646	Aerobic Digestion	Belt Filter Press	70	Compost	On-site
MORRISVILLE (V) WWTF	261742	0.120	0.060	Aerobic Digestion	Belt Filter Press	8	Landfill	Madison Co LF
ONEIDA (C) STP	26956	3.750	2.320	Anaerobic Digestion	Belt Filter Press	397	Landfill	Madison Co LF

ONONDAGA COUNTY

BALDWINVILLE SENECA KNOLLS	30571	9.000	4.100	Aerobic Digestion	Belt Filter Press	380	Landfill	Sent to Syracuse Metro
BREWERTON WPCP	27596	3.000	1.900	Aerobic Digestion	None	364	Landfill	Sent to Syracuse Metro
JORDAN (V) WPCP	105007	0.160	0.086	None	None	30	Landfill	Sent to Auburn
MARCELLUS (V) WPCP	20532	0.380	0.300	Aerobic Digestion	Belt Filter Press	40	Incinerate	Sent to Auburn
MEADOWBROOK-LIMESTONE WWTP	27723	6.500	5.200	Aerobic Digestion	None	697	Landfill	Sent to Syracuse Metro
METROPOLITAN SYRACUSE WWTP	27081	84.200	58.800	Anaerobic Digestion	Centrifuge	8351	Landfill	Seneca Meadows LF
MINOA (V) STP	25461	0.730	0.450	Aerobic Digestion	Belt Filter Press	47	Landfill	Seneca Meadows LF
OAK ORCHARD WWTP	30317	10.000	6.000	None	None	2496	Landfill	Sent to Syracuse Metro
SKANEATELES (V) WWTP	94480	2.000	0.540	Lime Stabilization	None	100	Landfill	Sent to Auburn
TULLY (V) STP	26824	0.250	0.157	Aerobic Digestion	Belt Filter Press	20	Land Apply	Tully Farm
WETZEL ROAD WWTP	27618	7.000	2.200	None	None	485	Landfill	Sent to Syracuse Metro
WHISPERING OAKS SUBDIVISION	231321	0.017	0.008	Septic Tank	None	1	Landfill	Sent to Syracuse Metro

OSWEGO COUNTY

BIG BAY SD	216291	0.056	0.033	Aerobic Digestion	None	6	Incinerate	Sent to Watertown
CAUGHDENNOY SD	157376	0.029	0.018	Septic Tank	None	3	Landfill	Sent to Fort Brewerton SD
CENTRAL SQUARE (V) STP	35131	0.400	0.260	Aerobic Digestion	Belt Press/Dry Beds	73	Landfill	Bristol Hills LF
CLEVELAND (V) WWTP	214370	0.150	0.036	Aerobic Digestion	Drying Beds	56	Landfill	Bristol Hill LF
FORT BREWERTON SD	245062	0.125	0.030	Aerobic Digestion	None	5	Landfill	Sent to Fulton (C)

FULTON (C) WPCP	26301	3.400	2.020	Anaerobic Digestion	Belt Filter Press	290	Landfill	Bristol Hill LF
MEXICO (V) STP	36617	0.300	0.271	Aerobic Digestion	None	25	Incinerate	Sent to Watertown
MINETTO SD WPCP	36749	0.600	0.140	Aerobic Digestion	Drying Beds	22	Landfill	Bristol Hill LF
OSWEGO (C) EAST SIDE WWTF	29114	5.350	1.800	Lime Stabilization	Centrifuge	276	Landfill	Bristol Hill LF
OSWEGO (C) WEST SIDE WWTF	29106	4.000	2.790	Lime Stabilization	Centrifuge	423	Landfill	Bristol Hill LF
PARISH (V) WWTP	107654	0.140	0.063	Aerobic Digestion	Drying Beds	10	Landfill	Bristol Hill LF
PHOENIX (V) STP	20664	0.600	0.410	Aerobic Digestion	Drying Beds	70	Landfill	Bristol Hill LF
PULASKI (V) STP	20257	0.665	0.455	Aerobic Digestion	Belt Filter Press	58	Landfill	Bristol Hills LF
SLEEPY HOLLOW SD	29238	0.030		Aerobic Digestion	None	1	Contract Hauler	
TIOGA COUNTY								
NICHOLS (T) STP	262480	0.040	0.001	Aerobic Digestion	None	1	Land Apply	Sent to Owego (V)
OWEGO (T) SD#1	22730	0.848	0.420	Aerobic Digestion	Belt Filter Press	58	Landfill	Superior Greentree LF in PA
OWEGO (V) STP	29262	1.000	0.362	Anaerobic Digestion	Belt Filter Press	130	Land Apply	Klett Bros. Farm
OWEGO WPCP #2	25798	2.000	0.880	Anaerobic Digestion	Belt Filter Press	130	Landfill	Superior Greentree LF, PA
WAVERLY (V) WWTP	31089	1.350	0.689	Aerobic Digestion	Belt Filter Press	152	Land Apply	Leo Dickson Farm
TOMPKINS COUNTY								
CAYUGA HEIGHTS (V) WWTP	20958	2.000	1.700	Anaerobic Digestion	Belt Filter Press	280	Land Apply	Landis Farm
DRYDEN (V) STP	29190	0.400	0.350	Anaerobic Digestion	Drying Beds	60	Land Apply	Leo Dickson
FREEVILLE (V) WWTP	110493	0.125	0.050	Lagoon	None	6	Lagoon	On-site
GROTON (V) STP	25585	0.350	0.300	Imhoff Tank	Drying Beds	38	Landfill	Seneca Meadows LF
ITHACA AREA WWTF	26638	13.100	6.100	Anaerobic Digestion	Belt Filter Press	1051	Landfill	Ontario County & Seneca Meadow
NEWFIELD (T) SD #1	110752	0.030	0.033	Septic Tank	None	10	Landfill	Sent to Ithaca
TRUMANSBURG (V) WWTP	24902	0.250	0.250	Aerobic Digestion	Belt Filter Press	10	Land Apply	Leo Dickson Farm

FACILITY NAME	SPDES #	FLOW, DESIGN	MGD ACTUAL	SLUDGE TREATMENT METHOD	DEWATERING DEVICE	DRY TONS PER YEAR	USE/DISPOSAL METHOD	LOCATION
DEC REGION 8								
CHEMUNG COUNTY								
BAKER ROAD FACILITY	246948	0.015	0.004	Aerobic Digestion	None	2	Landfill	Sent to Chemung Co Elmira
CHEMUNG CO ELMIRA SD STP	35742	12.000	7.220	Anaerobic Digestion	Belt Filter Press	760	Landfill	Chemung Co LF
CHEMUNG CO SD#1 STP	36986	12.000	4.600	Anaerobic Digestion	Belt Filter Press	204	Landfill	Chemung Co LF
GENESEE COUNTY								
ALEXANDER (V) WWTF	110523	0.055	0.033	Septic Tank	None	3	Landfill	Sent to North Tonawanda
BATAVIA (C) WPCP	26514	5.500	3.400	Lagoon	None	670	Lagoon	On-site
BERGEN (V) STP	110434	0.104	0.113	Septic Tank	None	7	Landfill	Sent to Van Lare
BYRON (T) SD STP	160971	0.084	0.063	Septic Tank	None	7	Contract Hauler	Stafford, NY
CORFU (V) WWTF	108430	0.135	0.062	Imhoff Tank	Drying Beds	10	Store On-site	Onsite
DARIEN (T) WWTF	228346	0.065	0.022	Aerobic Digestion	None	5	Compost	Sent to Newfane
ELBA (V) WWTP	20907	0.125	0.078	Lagoon	None	10	Lagoon	On-site
LEROY (V) STP	30546	1.000	0.616	None	Belt Filter Press	152	N-Viro	On-site
OAKFIELD (V) STP	23639	0.500	0.149	Aerobic Digestion	None	30	Landfill	Sent to Van Lare
PAVILION (T) WWTF	247197	0.080	0.033	Aerobic Digestion	None	5	Landfill	Sent to Van Lare
LIVINGSTON COUNTY								
AVON (V) WWTP	24449	2.750	0.779	Anaerobic Digestion	Drying Beds	90	Store On-site	Reed bed system
CONESUS LAKE COUNTY SD	32328	1.270	0.543	Anaerobic Digestion	Dry Beds/Reed Beds	60	Onsite/Land Appl	On-site/ Leo Dickson Farm
DANSVILLE (V) WWTP	24384	1.500	1.100	Aerobic Digestion	Drying Beds	125	Land Apply	Sent to Bath
GENESEO (V) STP	30635	1.500	0.743	Anaerobic Digestion	Drying Beds	120	Landfill	High Acres LF
GROVELAND STATION WWTF	247227	0.030	0.010	Aerobic Digestion	None	2	Store On-site	Sent to Conesus Lake
LIMA (V) WWTP	22420	0.300	0.174	Anaerobic Digestion	Drainad Sludge bag	23	Landfill	Ontario Co LF
MOUNT MORRIS (V) WWTF	30741	0.864	0.367	Anaerobic Digestion	Belt Filter Press	60	Compost	On-site
NUNDA (V) WWTF	108421	0.200	0.112	Aerobic Digestion	Drying Beds	22	Land Apply	Bucci's fields
YORK (T) WWTF	23990	0.300	0.109	None	None	20	Landfill	Sent to Canandaigua

MONROE COUNTY

FRANK E VAN LARE WWTP	28339	135.000	91.500	None	Centrifuge	22497	Landfill	High Acres/Mill Seat LFs
HONEOYE FALLS (V) WWTP	25259	0.600	0.323	Anaerobic Digestion	None	27	Incinerate	Sent to Van Lare
NORTHWEST QUAD PW DIST#1	28231	22.000	15.600	None	Centrifuge	4403	Landfill	Mill Seat LF
SCOTTSVILLE (V) STP	20133	0.650	0.516	Aerobic Digestion	Drying Beds	80	Landfill	Sent to Van Lare
WALTER W BRADLEY WPCF	21610	7.500	5.600	Anaerobic Digestion	Centrifuge	729	Landfill	High Acres LF

ONTARIO COUNTY

BLOOMFIELD (V) WWTP	24007	0.323	0.242	Imhoff Tank	Drying Beds	28	Landfill	Ontario Co LF
CANANDAIGUA (C) WWTF	25968	6.500	2.480	Anaerobic Digestion	Belt Filter Press	585	Landfill	Ontario County LF
CLIFTON SPRINGS (V) WWTP	20311	0.500	0.212	Aerobic Digestion	Belt Filter Press	47	Compost	On-site
FARMINGTON (T) STP	23531	4.000	1.600	Anaerobic Digestion	Belt Filter Press	260	Landfill	Ontario Co LF
GORHAM (T) STP	160814	0.061	0.024	Septic Tank	None	2	Landfill	Sent to Canandaigua
HONEOYE LAKE COUNTY WWTP	107255	0.500		Aerobic Digestion	None	40	Landfill	Sent to Canandaigua STP
MANCHESTER-SHORTVILLE JNT STP	30813	0.880	0.400	Aerobic Digestion	Belt Filter Press	63	Compost	On-site
MARSH CREEK WWTP	27049	6.000	3.500	Anaerobic Digestion	Belt Filter Press	600	Landfill	Ontario County LF
HELPS (V)	24651	0.304	0.151	Aerobic Digestion	Drying Beds	20	Store On-site	On-site
VICTOR (V) WWTP	22713	0.500	0.200	Anaerobic Digestion	Belt Press/Dry Beds	25	Landfill	Ontario County LF

ORLEANS COUNTY

ALBION JOINT MUN-IND POL CTRL	28401	2.300	1.800	Aerobic Digestion	None	240	Land Apply	Various farms in Orleans Co.
HOLLEY (V) STP	23256	0.450	0.311	Aerobic Digestion	None	36	Landfill	Sent to Van Lare
LYNDONVILLE (V) WWTP	24678	0.150	0.049	Anaerobic Digestion	Drying Beds	8	Landfill	High Arces LF
MEDINA (V) WWTP	21873	5.000	2.000	Anaerobic Digestion	Belt Filter Press	96	Compost/Landfill	On-site/Modern LF
MONTOUR FALLS (V) STP	21865	0.310	0.220	Imhoff Tank	Dry Bed/Filter Press	64	Land Apply	Leo Dickson Farm
WATKINS GLEN (V) STP	20524	0.700	0.368	Aerobic Digestion	Belt Filter Press	82	Land Apply	Leo Dickson

SENECA COUNTY

FIVE POINTS CORRECTIONAL	246972	0.550	0.240	Aerobic Digestion	Belt Filter Press	62	Landfill	Seneca Meadows LF
INTERLAKEN (V) STP	29289	0.100	0.052	Imhoff Tank	None	12	Landfill	Sent to Seneca Co SD#1
JUNIUS (T) SD#1	245623	0.025	0.010	Aerobic Digestion	None	5	Landfill	Sent to Geneva
SENECA COUNTY SD#1 STP	160407	0.700	0.430	Aerobic Digestion	Drying Beds	100	Landfill	Seneca Meadows LF
SENECA FALLS (V) WWTP	33308	3.500	1.260	Anaerobic Digestion	Belt Filter Press	270	Landfill	Seneca Meadows LF
WATERLOO (V) STP	22365	0.800	1.080	Lime Stabilization	Belt Filter Press	139	Landfill	Seneca Meadows

STEUBEN COUNTY

ADDISON (V) WWTP	20320	0.420	0.166	Anaerobic Digestion	Drying Beds	30	Land Apply	Leo Dickson
BATH (V) WWTP	21431	1.000	0.637	Aerobic Digestion	Belt Filter Press	437	Land Apply	Leo Dickson
CANISTEO (V) STP	23248	0.700	0.275	Aerobic Digestion	Drying Beds	28	Land Apply	Leo Dickson
CORNING (C) STP	25721	3.060	1.300	Anaerobic Digestion	Belt Filter Press	166	Landfill	Bath LF
ERWIN (T) WWTP	23906	1.750	0.550	Aerobic Digestion	Belt Filter Press	133	Landfill	Steuben Co LF
HORNELL (C) WPCP	23647	4.000	2.500	Anaerobic Digestion	None	240	Land Apply	Smith Stock Farm
JASPER (T) WWTP	247251	0.035	0.201	Aerobic Digestion	None	20	Land Apply	Sent to Hornell
PAINTED POST (V) STP	25712	0.500	0.150	Anaerobic Digestion	Belt Filter Press	32	Landfill	Steuben Co LF
SOUTH CORNING WWTP	110531	0.200	0.108	Septic Tank	None	14	Land Apply	Sent to Bath
TROUPSBURG (H) WWTF	246999	0.035	0.006	Septic Tank	None	2	Land Apply	Sent to Hornell
WAYLAND (V) WWTP	32999	0.350	0.163	Aerobic Digestion	Belt Filter Press	30	Landfill/Compost	Steuben Co LF/Leo Dickson

WAYNE COUNTY

CLYDE (V) WWTP	23965	0.400	0.184	Aerobic Digestion	Drying Beds	60	Landfill	Seneca Meadows LF
LYONS (V) WWTP	22551	0.750	0.350	Aerobic Digestion	None	80	Landfill	Sent to Canandaigua
MACEDON (V) STP	23612	0.750	0.290	Anaerobic Digestion	None	39	Landfill	Sent to Canandaigua
MARION (T) WWTP	31569	0.125	0.086	Aerated Lagoon	None	10	Lagoon	On-site
NEWARK (V) WWTP	29475	3.000	1.338	Anaerobic Digestion	Plate & Frame Press	220	Landfill	Seneca Meadows LF
ONTARIO (T) STP	27171	1.000	0.680	Aerobic Digestion	Belt Press/Dry beds	75	Compost	Ontario Composting fac.
PALMYRA (V) STP	25101	0.600	0.273	Anaerobic Digestion	Drying Beds	71	Landfill	High Acres LF
SAVANNAH (T) STP	162663	0.046	0.036	Septic Tank	None	2	Landfill	Sent to Seneca Falls
SODUS (V) WWTP	21482	0.383	0.413	Aerobic Digestion	Belt Filter Press	47	Compost	
SODUS POINT (V) WPCF	28088	0.570	0.110	Aerobic Digestion	Plate & Frame Press	36	Landfill	Seneca Meadows LF
WALWORTH SD #1	25704	1.200	0.600	Aerobic Digestion	None	130	Land Apply/Landfill	Gibbs farms/High Acres LF
WCW-SA REGIONAL WWTP	246930	0.500	0.071	Aerobic Digestion	None	13	Store On-site	On-site reed bed
WILLIAMSON (T) STP	108723	0.625	0.640	Aerobic Digestion	Reed Beds	65	Reed Beds	On-site
WOLCOTT (V) WWTP	20303	0.250		Aerobic Digestion	Drying Beds	36	Landfill	BFI landfill

YATES COUNTY

DUNDEE (V) STP	25445	0.300	0.355	Anaerobic Digestion	None	34	Land Apply	Sent to Bath
PENN YAN (V) WWTP	29726	1.800	1.300	Anaerobic Digestion	Dry Beds/Reed bed	122	On-site/Landfill	On-site/Ontario Co LF

FACILITY NAME	SPDES #	FLOW, DESIGN	MGD ACTUAL	SLUDGE TREATMENT	DEWATERING	DRY TONS	USE/DISPOSAL	LOCATION
				METHOD	DEVICE	PER YEAR	METHOD	
DEC REGION 9								
BOLIVAR (V) WWTF	22381	0.400	0.310	Aerobic Digestion	Drying Beds	30	Landfill Store On- site/Landfill	Allegany Co LF
CUBA (V) WWTF	23515	2.000	0.700	Anaerobic Digestion	Drying Beds	100	Reed Beds	Allegany Co LF
FRIENDSHIP (T) WWTP	29301	0.286	0.090	Imhoff Tank	Reed Beds	40	Reed Beds	On-site
HOUGHTON SD WWTP	24431	0.280	0.143	Anaerobic Digestion	Drying Beds	20	Landfill	Allegany Co LF
HUME (T) WWTP	203858	0.036		Septic Tank	None	4	Store On-site	
WELLSVILLE (V) WWTP	20621	2.200	0.860	Anaerobic Digestion	Dry Beds/Belt Press	185	Landfill	Allegany Co LF
CATTARAUGUS COUNTY								
CANASERAGA (V) WWTF	269573	0.100	0.035	Aerobic Digestion	Reed Beds	4	Reed Beds	On-site
CATTARAUGUS (V) WWTP	25861	0.060	0.039	Septic Tank	None	8	Contract Hauler	Zuech Septic Service
ELLCOTTVILLE (V) WWTP	23574	0.750	0.717	Aerated Lagoon	None	80	Lagoon	On-site
FRANKLINVILLE (V) WWTF	28991	0.750	0.646	Aerobic Digestion	Drying Beds	36	Landfill	Chaffee LF
LIMESTONE (V) WWTP	29068	0.200	0.120	Lagoon	None	13	Lagoon	On-site
LITTLE VALLEY (V) WWTP	104795	0.185	0.104	Aerobic Digestion	None	10	Land Apply	
OLEAN (C) WWTF	27162	7.000	3.800	Anaerobic Digestion	Belt Filter Press	412	Landfill	Hyland LF
OTTO (T) WWTP	258270	0.027	0.005	None	None	1	Landfill	Sent to Jamestown
PORTVILLE (V) STP	20966	0.310	0.190	Septic Tank	None	20	Contract Hauler	Lee's Septic Service
RANDOLPH (V) STP	258202	0.074	0.043	Aerobic Digestion	None	5	Landfill	Sent to Jamestown
SALAMANCA (C) WWTP	20508	2.000	1.400	Aerobic Digestion	Belt Filter Press	130	Land Apply/Landfill	Various farms/Chautauqua LF
SOUTH DAYTON (V) WWTP	204846	0.080	0.045	Imhoff Tank	None	3	Landfill	Sent to Jamestown
CHAUTAUQUA COUNTY								
BROCTON (V) WPCF	23507	0.372	0.353	Aerobic Digestion	Plate & Frame Press	65	Landfill	Chautauqua LF
CHAUTAUQUA HEIGHTS SD WWTP	269450	0.060	0.018	None	None	2	Landfill	Sent to North Chautauqua Lake
CHAUTAUQUA UTILITY DIST WWTP	29769	0.840	0.328	None	None	53	Landfill	Sent to Jamestown
CHERRY CREEK WWTP	204081	0.060	0.035	Septic Tank	None	4	Landfill	Sent to Jamestown
DUNKIRK (C) WWTP	27961	6.000	5.300	Lime Stabilization	Plate & Frame Press	2970	Landfill	Chautauqua Co LF
FREDONIA (V) WWTP	26409	3.300		Anaerobic Digestion	Centrifuge/D. Beds	758	Landfill	Ellery LF

HANOVER (T) SD#1 WWTF	105104	0.500	0.250	Aerobic Digestion	Drying Beds	45	Landfill	Chautauqua Co LF
JAMESTOWN (C) WWTP	27570	12.000	7.800	Anaerobic Digestion	Belt Filter Press	1149	Landfill	Chautauqua Co LF
LILY DALE SD WWTF	100242	0.048	0.010	Septic Tank	None	5	Landfill	Sent to Westfield WWTP
NORTH CHAUTAUQUA LAKE SD WWTP	20826	0.500	0.335	Anaerobic Digestion	Drying Beds	76	Landfill	Sent to Westfield STP
RIPLEY (T) WPC FACILITY	25381	0.400	0.285	Aerobic Digestion	Drying Beds	62	Landfill	Chautauqua LF
SHERMAN (V) WWTP	36315	0.140	0.060	Aerobic Digestion	Drying Beds	43	Landfill	Chautauqua LF
SILVER CREEK (V) WWTP	22411	0.750	0.620	Aerobic Digestion	None	18	Landfill	Sent to Westfield
SOUTH & CTR CHAUTAUQUA L WWTP	106895	4.100	2.400	None	None	352	Landfill	Sent to Jamestown
WESTFIELD (V) WPCF	21334	2.600	1.100	Aerobic Digestion	Plate & Frame Press	420	Landfill	Ellery LF
ERIE COUNTY								
AKRON (V) WWTP	31003	0.820	0.434	Aerobic Digestion	Drying Beds	80	Store On-site	On-site
ALDEN (T) SD #2	21857	0.021	0.013	Aerobic Digestion	None	4	Incinerate	Sent to Buffalo Sewer Auth.
ALDEN (V) WWTF	20541	0.650	0.430	Anaerobic Digestion	Dry Beds/Belt Press	70	Landfill	Modern LF
AMHERST (T) WWTF #16	25950	36.000	24.900	Anaerobic Digestion	Centrifuge	3229	Incinerate	Sent to Buffalo Sewer Authority
BIRD ISLAND WWTP	28410	180.000	133.000	Anaerobic Digestion	Centrifuge	15244	Incinerate	On-site
BLASDELL (V) WWTP	20681	0.890	1.140	Anaerobic Digestion	Drying Beds	98	Landfill	Allied Waste LF
CLARENCE RESEARCH PARK	167169	0.020	0.006	Aerobic Digestion	None	2	Incinerate	Sent to Southtowns
CRANERIDGE SUBDIVISION WWTP	36714	0.072	0.043	None	None	5	Incinerate	Sent to Buffalo Sewer Authority
EAST AURORA (V) WWTP	28436	3.140	1.390	Aerobic Digestion	Centrifuge	134	Landfill	Allied Waste LF
ELMA (T) SD# 5	33995	0.080	0.065	Aerobic Digestion	None	5	Incinerate	Sent to Buffalo Sewer Auth
ELMA (T) SD#4	32051	0.020	0.012	Aerobic Digestion	None	1	Incinerate	Sent to Buffalo Sewer Auth
ELMA (T) SD#7	203360	0.020	0.003	Aerobic Digestion	None	1	Incinerate	Sent to Buffalo Sewer Auth
ELMA SD#1 - JERGE SUBDIVISION	23019	0.014	0.010	Septic Tank	None	1	Incinerate	Sent to Buffalo Sewer Auth.
ERIE CO SD#2 WWTP	22543	7.680	6.010	Aerobic Digestion	Dry Beds/Plate&Frame	1247	Landfill	Allied Waste LF
ERIE CO/SOUTHTOWNS STP	95401	16.000	13.700	None	Plate & Frame Press	2920	Incinerate	On-site
ERIE COUNTY SD WWTP	22136	4.500	3.300	Anaerobic Digestion	Plate & Frame Press	375	Landfill	Allied Waste LF
GOWANDA (V) WWTP	32093	2.203		Anaerobic Digestion	Belt Filter Press	226	Store On-site/Compost	On-site
GRAND ISLAND SD#2 WWTP	27693	3.300	2.900	Anaerobic Digestion	None	279	Incinerate	Sent to Buffalo Sewer Auth.
HOLLAND (T) WWTF	108103	0.180	0.123	Aerobic Digestion	Drying Beds	11	Landfill	Allied Waste LF
KISSING BRIDGE SD NO.,2 WWTP	243493	0.025	0.025	Aerobic Digestion	None	1	Incinerate	Sent to Buffalo Sewer Auth.

SPRINGVILLE (V) WWTP	21474	1.150	0.950	Anaerobic Digestion	None	46	Incinerate	Sent to Buffalo Sewer Auth.
TONAWANDA (T) SD#2 WWTP	26395	30.000	20.400	Unox process	Centrifuge	3009	Incinerate	On-site
NIAGARA COUNTY								
GASPORT SD#1 WWTP	29963	0.480	0.260	Aerobic Digestion	Drying Beds	20	Landfill	Modern LF
LEWISTON MASTER SD	27766	2.750	2.000	Anaerobic Digestion	Belt Filter Press	330	Landfill	Modern LF
LOCKPORT (C) WWTP	27057	22.000	10.900	None	Belt Filter Press	800	Compost	On-site
MIDDLEPORT (V) WWTF	22331	0.700	0.392	Anaerobic Digestion	None	15	Landfill	Sent to Van Lare
NEWFANE (T) WWTP	27774	1.600	1.340	None	Belt Filter Press	289	Compost	On-site
NIAGARA COUNTY SD#1 WWTP	27979	14.080	8.260	None	Centrifuge	1372	Landfill	Modern LF
NIAGARA FALLS (C) WWTP	26336	48.000	31.000	Lime Stabilization	Belt Filter Press	5000	Landfill	ALLIED LF
NORTH TONAWANDA (C) WWTP	26280	13.000	6.787	Anaerobic Digestion	Belt Filter Press	1000	Landfill	Modern LF
SOMERSET-BARKER SD WWTP	30651	0.278	0.153	Lagoon	None	17	Lagoon	On-site
WILSON (V) WWTP	20419	0.312	0.234	Aerobic Digestion	Belt Filter Press	26	Landfill	Modern LF
WYOMING COUNTY								
ARCADE (V) WWTP	26948	0.500	0.300	Aerobic Digestion	Belt Filter Press	50	Compost	On-site
ATTICA (V) WWTP	21849	1.400	1.087	Anaerobic Digestion	Belt Filter Press	170	Compost	On-site
CASTILE (V) WWTP	269336	0.175	0.065	Aerobic Digestion	Drying Beds	10	Land Apply	At Dickson Farms
PERRY (V) WWTP	22985	0.970	0.740	Imhoff Tank	Belt Filter Press	144	Land Apply	By Leo Dickson
WARSAW (V) STP	21504	1.200	0.490	Anaerobic Digestion	Drying Beds	80	Land Apply	Leo Dickson

APPENDIX C

2009 BIOSOLIDS METAL DATA

**DEPARTMENT OF ENVIRONMENTAL CONSERVATION
DIVISION OF MATERIALS MANAGEMENT
2009 BIOSOLIDS METAL DATA
mg/kg Dry Weight**

FACILITY NAME	DATE	Arsenic	Cadmium	Chromium	Copper	Lead	Mercury	Molybdenum	Nickel	Selenium	Zinc
DEC PRODUCT STANDARD		41	10	1000	1500	300	10	40	200	100	2500
DEC REGION 1											
NASSAU COUNTY											
CEDARHURST (V) WPCP	2/28/2009	25.00	13.00	35.00	650	330.0	3.40	13.00	25.0	25.00	1500
	6/30/2009	25.00	13.00	45.00	1000	480.0	4.30	13.00	38.0	25.00	2300
	8/31/2009	25.00	13.00	43.00	880	380.0	4.80	13.00	30.0	25.00	2100
	12/31/2009	100.00	50.00	100.00	2700	830.0	7.50	50.00	150.0	100.00	6800
LAWRENCE (V) STP	2/28/2009	16.90	8.47	34.90	825	444.0	7.29	84.70	67.8	13.60	1970
	4/30/2009	17.20	8.62	19.20	371	198.0	3.45	86.20	69.0	8.62	921
	8/31/2009	18.20	9.09	18.40	579	194.0	3.64	90.90	72.9	9.86	1180
	10/31/2009	18.90	9.43	25.10	745	279.0	3.77	94.30	75.5	9.43	1740
DEC REGION 2											
BRONX COUNTY											
HUNTS POINT WPC	1/1/2009	4.70	4.14	60.40	729	189.0	2.12	6.53	28.9	2.27	1159
	2/1/2009	4.16	8.14	57.30	782	179.0	1.89	7.34	30.2	5.83	1149
	3/1/2009	4.61	8.89	55.30	780	168.0	1.83	5.50	28.1	6.63	1088
	4/1/2009	5.92	6.06	61.40	749	214.0	1.73	7.72	31.5	5.92	1137
	5/1/2009	5.06	6.46	65.10	740	203.0	2.08	9.05	28.9	4.13	1112
	6/1/2009	5.24	5.99	52.80	629	225.0	1.70	9.82	27.9	4.35	1107
	7/1/2009	5.30	7.01	58.60	767	223.0	2.06	8.70	28.3	4.40	1196
	8/1/2009	6.29	5.48	58.30	779	251.0	2.47	12.90	27.9	5.78	1181
	9/1/2009	5.38	5.34	65.00	844	203.0	1.79	10.40	27.0	5.71	1188
	10/1/2009	3.81	5.22	63.60	829	171.0	1.92	8.29	27.0	3.82	1090
	11/1/2009	3.51	5.29	54.80	783	176.0	2.23	9.45	25.3	2.96	1145
	12/1/2009	4.29	5.28	60.20	774	154.0	1.74	6.98	29.7	4.89	1086
KINGS COUNTY											
26TH WARD WPCP	1/1/2009	3.54	2.46	36.20	614	144.0	1.80	3.75	20.6	3.16	1080

FACILITY NAME	DATE	Arsenic	Cadmium	Chromium	Copper	Lead	Mercury	Molybdenum	Nickel	Selenium	Zinc
DEC PRODUCT STANDARD		41	10	1000	1500	300	10	40	200	100	2500
26TH WARD WPCP	1/1/2009	3.54	2.46	36.20	614	144.0	1.80	3.75	20.6	3.16	1080
	3/1/2009	5.62	10.10	51.00	779	558.0	4.08	4.06	37.7	6.75	1213
	4/1/2009	7.47	11.50	68.20	866	624.0	3.93	5.54	48.5	6.86	1442
	5/1/2009	4.69	5.86	56.80	708	348.0	3.21	4.63	31.2	3.98	1083
	6/1/2009	3.93	4.22	33.60	676	195.0	3.74	6.03	22.6	5.17	1123
	7/1/2009	5.16	3.87	35.70	685	230.0	2.34	5.60	23.0	6.83	1074
	8/1/2009	5.45	5.66	44.40	730	281.0	2.80	6.91	24.1	5.21	1160
	9/1/2009	4.93	4.13	28.40	725	179.0	2.08	5.55	19.3	5.99	1182
	10/1/2009	3.90	5.37	60.80	755	207.0	2.44	6.09	25.8	4.05	1183
	11/1/2009	3.11	4.17	61.50	674	197.0	2.26	4.83	23.4	3.14	1104
	12/1/2009	3.96	4.09	43.70	613	171.0	1.65	4.29	21.3	4.55	966
	RED HOOK WPCP	1/1/2009	7.05	3.48	65.90	771	243.0	1.85	10.00	27.3	3.96
2/1/2009		7.08	6.12	45.30	848	225.0	1.83	7.61	29.0	4.96	1046
3/1/2009		8.25	4.92	46.30	889	215.0	1.93	6.59	23.9	6.64	1103
4/1/2009		8.81	4.80	49.00	885	225.0	2.15	10.40	24.7	6.81	1200
5/1/2009		8.20	4.75	47.60	823	225.0	1.87	9.60	24.9	5.64	1161
6/1/2009		7.04	5.44	46.40	736	222.0	1.80	10.60	25.2	4.76	1176
7/1/2009		7.86	4.29	44.30	797	215.0	2.03	9.40	24.6	4.84	1090
8/1/2009		7.65	4.83	46.70	841	218.0	2.40	13.60	23.8	4.71	1190
9/1/2009		7.44	5.09	49.80	857	222.0	1.79	13.20	24.6	6.32	1319
10/1/2009		6.10	4.43	44.00	876	186.0	1.92	13.10	21.5	5.06	1101
11/1/2009		5.73	3.89	44.60	863	184.0	1.86	11.97	21.2	4.33	1052
12/1/2009		6.91	5.43	46.70	870	182.0	2.23	12.00	23.1	5.63	1138
NEW YORK COUNTY WARDS ISLAND WPC	1/1/2009	3.60	3.30	63.70	735	165.0	2.00	7.25	25.9	2.00	1175
	2/1/2009	3.09	7.36	42.90	848	178.0	2.11	8.04	25.2	3.83	1192
	3/1/2009	4.09	7.65	43.80	789	153.0	2.17	7.04	22.9	6.29	1084
	4/1/2009	4.95	5.51	49.80	749	188.0	1.80	8.55	27.4	5.05	1151
	5/1/2009	4.16	5.14	41.40	664	181.0	1.74	7.41	23.6	3.50	1028
	6/1/2009	4.10	4.81	51.50	624	203.0	1.34	8.83	25.6	3.96	1141
	7/1/2009	4.65	3.96	49.50	692	184.0	2.01	8.41	28.3	4.84	1106
	8/1/2009	5.28	4.73	52.10	699	201.0	2.20	8.69	22.9	4.65	1108
	9/1/2009	4.91	5.01	47.80	743	169.0	1.79	7.97	21.3	5.05	1182
	10/1/2009	3.42	4.02	36.30	781	142.0	1.59	8.33	18.5	3.32	1060
	11/1/2009	2.52	4.04	47.50	754	168.0	1.97	9.06	21.4	2.07	1123

FACILITY NAME	DATE	Arsenic	Cadmium	Chromium	Copper	Lead	Mercury	Molybdenum	Nickel	Selenium	Zinc
DEC PRODUCT STANDARD		41	10	1000	1500	300	10	40	200	100	2500
WARDS ISLAND WPC	12/1/2009	4.09	6.86	57.80	776	163.0	2.24	8.76	23.5	2.52	1170
QUEENS COUNTY											
BOWERY BAY WPC	6/1/2009	4.13	3.66	93.50	557	175.0	1.28	5.03	29.4	5.39	1156
	8/1/2009	5.12	2.93	46.80	588	160.0	1.48	8.29	24.2	6.41	1142
	9/1/2009	4.49	3.00	58.30	609	142.0	1.50	5.82	22.2	6.80	1188
	10/1/2009	3.68	2.88	47.20	673	134.0	1.56	6.97	23.4	5.71	1132
	11/1/2009	3.52	2.23	81.30	634	138.0	1.52	5.67	30.6	4.54	1113
	12/1/2009	4.23	3.03	42.10	546	119.0	1.14	3.92	23.2	6.38	989
JAMAICA WPC	1/1/2009	3.43	2.06	25.10	548	109.0	1.48	3.13	15.4	2.75	993
	2/1/2009	2.61	4.82	21.10	614	116.0	1.67	4.18	17.4	6.45	982
	3/1/2009	2.84	3.36	21.10	610	112.0	1.59	3.30	14.3	7.78	961
	4/1/2009	4.61	2.98	25.00	626	142.0	1.63	4.85	16.8	7.77	1006
	5/1/2009	3.08	5.55	21.80	566	110.0	1.75	4.22	12.4	4.83	887
	6/1/2009	3.52	4.34	26.90	529	147.0	1.21	8.18	15.9	5.36	1002
	7/1/2009	3.57	3.19	21.30	561	121.0	1.47	5.66	13.7	6.30	922
	8/1/2009	4.08	4.59	21.90	592	125.0	1.43	5.09	13.7	6.87	1018
	9/1/2009	4.75	4.08	23.70	625	138.0	1.48	4.61	14.8	6.62	1155
	10/1/2009	3.42	3.43	21.10	655	120.0	1.45	5.17	16.4	5.53	1027
	11/1/2009	2.66	2.61	19.60	612	114.0	2.44	4.41	12.5	3.97	1025
	12/1/2009	3.44	3.67	21.60	599	126.0	1.66	4.98	17.7	6.17	1009
TALLMAN ISLAND WPC	1/1/2009	5.47	3.11	57.80	499	125.0	1.58	3.07	23.4	2.87	977
	2/1/2009	4.96	5.63	41.40	586	124.0	2.02	3.48	25.3	3.87	983
	3/1/2009	5.09	3.87	35.40	585	103.0	1.83	1.43	20.6	6.44	954
	4/1/2009	6.47	3.49	43.60	534	127.0	1.51	3.73	23.0	5.18	930
	5/1/2009	5.00	3.25	35.00	472	119.0	1.28	3.60	21.8	3.13	793
	6/1/2009	4.67	4.03	42.40	502	148.0	1.55	4.80	24.1	3.91	967
RICHMOND COUNTY											
OAKWOOD BEACH WPC	1/1/2009	4.37	1.37	44.00	484	73.0	1.05	3.07	51.1	2.98	977
	2/1/2009	3.23	4.35	35.90	529	76.0	1.08	3.98	41.6	3.81	818
	3/1/2009	3.72	2.64	31.40	506	67.0	0.98	3.51	33.4	5.19	751
	4/1/2009	5.16	3.80	35.30	530	80.0	1.02	4.47	43.6	5.81	854
	5/1/2009	4.05	3.08	32.90	486	83.0	1.43	2.65	42.4	3.62	786
	6/1/2009	4.86	3.50	38.20	443	90.0	1.05	4.78	47.3	4.25	836

FACILITY NAME	DATE	Arsenic	Cadmium	Chromium	Copper	Lead	Mercury	Molybdenum	Nickel	Selenium	Zinc
DEC PRODUCT STANDARD		41	10	1000	1500	300	10	40	200	100	2500
OAKWOOD BEACH WPC	7/1/2009	4.34	3.09	38.80	534	93.0	1.30	4.61	40.1	3.81	918
	8/1/2009	5.99	3.48	36.90	539	97.0	1.63	6.01	40.3	5.53	970
	9/1/2009	5.60	4.43	40.30	617	131.0	2.98	6.90	37.7	5.14	108
	10/1/2009	4.28	4.41	35.20	645	110.0	1.75	7.83	31.5	4.59	948
	11/1/2009	3.20	3.07	34.90	583	98.0	1.53	6.36	35.0	3.32	928
	12/1/2009	4.10	4.08	33.60	523	88.0	1.61	3.83	39.8	3.35	851
DEC REGION 3											
DUTCHESS COUNTY											
TRI-MUNICIPAL WWTP	2/28/2009	2.50	1.37	13.60	696	29.8	0.10	5.12	11.9	9.00	797
	4/30/2009	15.00	7.40	25.40	910	31.3	7.50	7.50	20.5	37.00	997
	6/30/2009	2.40	2.99	22.10	819	40.2	0.10	7.66	15.6	7.90	881
	8/31/2009	1.20	1.40	9.59	449	20.6	0.70	4.32	7.1	3.70	540
	10/31/2009	1.30	1.77	15.10	1100	42.3	0.78	6.76	11.6	6.50	1050
	12/31/2009	1.30	1.44	11.70	678	25.0	0.57	6.89	8.6	7.00	728
WESTCHESTER COUNTY											
YORKTOWN HEIGHTS SD WWTP	2/28/2009	25.27	2.00	114.00	935	145.0	2.51	15.20	168.0	25.27	891
	8/31/2009	33.10	3.00	154.00	523	65.7	1.25	33.30	73.2	33.10	688
DEC REGION 4											
OTSEGO COUNTY											
ONEONTA (C) WWTP	2/28/2009	4.84	0.39	5.89	115	12.9	0.55	2.57	4.4	7.74	278
	4/30/2009	4.62	0.35	6.67	133	12.1	0.42	3.02	5.3	7.39	257
	6/30/2009	24.10	1.95	31.90	832	92.0	0.55	15.00	23.4	38.50	1490
	8/31/2009	22.10	2.22	30.80	748	85.0	2.92	15.50	24.3	35.30	1450
	10/31/2009	25.00	2.23	28.30	957	72.0	2.81	17.10	22.5	39.90	1560
	12/31/2009	26.30	2.34	30.20	862	82.2	3.20	15.00	23.6	42.10	1500
SCHENECTADY COUNTY											
SCHENECTADY (C) STP	1/31/2009	1.83	0.98	15.60	789	26.7	0.21	8.13	16.1	4.08	541
	2/28/2009	0.97	0.97	14.00	642	28.4	0.08	5.74	11.2	3.45	438
	3/31/2009	0.97	0.97	16.50	812	29.0	0.08	8.61	14.1	4.49	541
	4/30/2009	1.40	0.97	13.70	662	34.6	0.08	6.70	11.2	4.20	420
	5/31/2009	0.93	0.93	14.40	743	35.2	0.07	7.07	12.6	0.93	521
	6/30/2009	0.96	0.96	15.50	816	36.7	0.08	3.28	14.6	2.15	577

FACILITY NAME	DATE	Arsenic	Cadmium	Chromium	Copper	Lead	Mercury	Molybdenum	Nickel	Selenium	Zinc
DEC PRODUCT STANDARD		41	10	1000	1500	300	10	40	200	100	2500
SCHENECTADY (C) STP	7/31/2009	1.28	1.52	17.80	848	54.9	0.90	1.72	16.0	1.32	649
	8/31/2009	0.94	1.19	17.80	811	55.2	0.19	1.89	15.3	0.94	635
	10/31/2009	1.36	1.32	14.30	800	47.2	0.22	2.64	15.4	1.32	662
	11/30/2009	1.14	1.41	17.70	928	46.2	0.91	2.27	18.8	1.14	793
	12/31/2009	0.98	1.07	13.10	761	38.4	0.08	8.30	15.2	0.98	618
DEC REGION 5											
CLINTON COUNTY											
PLATTSBURGH (C) WPCP	1/31/2009	1.00	0.54	16.00	343	17.7	0.53	6.09	11.5	2.80	395
	2/28/2009	1.10	0.54	18.70	404	14.9	0.10	7.04	10.7	2.70	390
	3/31/2009	1.20	1.45	31.40	340	12.7	0.91	5.86	13.5	2.60	472
	4/30/2009	1.20	0.93	16.30	296	24.6	0.82	5.08	10.9	1.00	421
	5/31/2009	1.20	0.80	15.80	335	15.7	0.45	5.03	9.7	2.70	440
	5/31/2009	1.20	0.80	15.80	335	15.7	0.45	5.03	9.7	2.70	440
	6/30/2009	1.30	0.75	15.60	353	20.9	0.55	5.54	10.6	3.10	516
	6/30/2009	1.30	0.75	15.60	353	20.9	0.55	5.54	10.6	3.10	516
	7/31/2009	0.80	3.90	23.70	375	40.7	0.95	7.75	14.0	2.90	519
	7/31/2009	0.80	3.90	23.70	375	40.7	0.95	7.75	14.0	2.90	519
	8/31/2009	0.90	0.92	18.70	376	29.5	0.96	6.69	12.1	3.30	561
	8/31/2009	0.90	0.92	18.70	376	29.5	0.96	6.69	12.1	3.30	561
	9/30/2009	1.10	1.27	24.10	574	31.1	0.92	7.74	12.3	3.70	845
	9/30/2009	1.10	1.27	24.10	574	31.1	0.92	7.74	12.3	3.70	845
	10/31/2009	0.70	0.66	14.00	298	13.1	0.63	6.05	7.9	3.40	350
	10/31/2009	0.70	0.66	14.00	298	13.1	0.63	6.05	7.9	3.40	350
	11/30/2009	1.00	1.19	17.60	394	50.4	1.23	8.21	10.0	5.20	567
	11/30/2009	1.00	1.19	17.60	394	50.4	1.23	8.21	10.0	5.20	567
	12/31/2009	1.00	0.87	17.10	307	17.9	0.67	5.53	11.1	4.90	463
	12/31/2009	1.00	0.87	17.10	307	17.9	0.67	5.53	11.1	4.90	463
ROUSES POINT (V) WWTP	2/28/2009	27.60	1.10	24.50	675	31.0	2.50	11.00	22.2	44.20	284
	4/30/2009	24.80	1.00	21.90	744	28.1	5.90	9.90	22.2	39.70	259
	6/30/2009	20.80	0.80	33.30	410	38.4	0.80	8.30	21.8	33.30	330
	8/31/2009	19.70	0.80	58.10	1000	36.0	2.50	8.70	20.2	31.60	337
	10/31/2009	21.00	0.90	60.00	888	43.4	2.73	10.90	19.3	33.60	392
	12/31/2009	19.60	0.79	49.30	768	38.6	2.29	11.80	17.2	31.40	342

FACILITY NAME	DATE	Arsenic	Cadmium	Chromium	Copper	Lead	Mercury	Molybdenum	Nickel	Selenium	Zinc
DEC PRODUCT STANDARD		41	10	1000	1500	300	10	40	200	100	2500
ESSEX COUNTY											
TICONDEROGA SD#5 WPCP	2/28/2009	1.40	1.10	21.50	463	57.0	0.09	5.00	19.4	3.50	660
	4/30/2009	7.50	1.52	26.60	447	47.5	0.53	2.75	23.4	3.40	628
	6/30/2009	3.30	1.20	22.90	423	47.9	0.50	2.51	19.1	5.40	672
	8/31/2009	1.60	1.33	22.10	345	45.7	0.86	4.97	17.9	3.50	703
	10/31/2009	1.30	2.05	26.20	461	57.9	0.64	5.46	26.4	6.40	978
	12/31/2009	1.80	1.72	21.70	412	42.3	0.57	6.44	18.9	5.50	811
DEC REGION 6											
ONEIDA COUNTY											
CAMDEN (V) WWTP	6/30/2009	3.00	3.00	6.30	118	13.0	0.14	3.00	6.5	3.00	120
	6/30/2009	3.00	3.00	6.30	118	13.0	0.14	3.00	6.5	3.00	120
	12/31/2009	3.00	2.60	6.20	138	20.0	0.29	2.00	7.5	3.70	210
	12/31/2009	3.00	2.60	6.20	138	20.0	0.29	2.00	7.5	3.70	210
SHERRILL (C) STP	3/31/2009	12.00	3.00	31.00	790	67.0	1.00	6.90	21.0	11.00	2300
	6/30/2009	4.00	4.00	22.00	410	43.0	0.85	4.00	12.0	9.00	1300
	9/30/2009	7.00	7.00	25.00	660	68.0	2.00	7.00	18.0	19.00	2400
	12/31/2009	10.00	7.00	23.00	700	66.0	1.00	7.00	17.0	7.00	2300
SAINT LAWRENCE COUNTY											
POTSDAM (V) WPCP	2/28/2009	6.10	2.80	48.00	820	66.0	4.80	7.80	14.0	9.10	2100
	4/30/2009	5.00	5.00	27.00	390	65.0	1.10	8.00	12.0	5.00	1900
	6/30/2009	6.00	6.00	24.00	680	61.0	0.80	6.00	13.0	16.00	1700
	8/31/2009	6.00	6.00	34.00	780	85.0	1.80	8.50	16.0	6.00	1800
	10/31/2009	4.00	4.00	44.00	800	78.0	2.00	13.00	16.0	4.00	2100
	12/31/2009	6.90	4.20	53.00	960	92.0	0.86	13.00	16.0	4.00	1600
DEC REGION 7											
BROOME COUNTY											
BINGHAMTON-JOHNSON (C)	1/31/2009	3.60	3.60	75.00	484	50.0	0.39	5.40	39.0	3.60	738
	2/28/2009	4.00	4.70	105.00	633	55.0	0.59	4.30	59.0	4.00	856
	3/31/2009	3.80	4.50	76.00	462	72.0	0.30	4.50	42.0	3.80	686
	4/30/2009	4.00	5.10	69.00	496	109.0	0.47	4.00	30.0	4.00	609
	5/31/2009	3.40	7.70	60.00	379	97.0	0.47	3.40	26.8	6.70	761
	6/30/2009	3.60	9.90	60.00	394	95.0	0.35	3.60	29.2	8.10	609

FACILITY NAME	DATE	Arsenic	Cadmium	Chromium	Copper	Lead	Mercury	Molybdenum	Nickel	Selenium	Zinc
DEC PRODUCT STANDARD		41	10	1000	1500	300	10	40	200	100	2500
BINGHAMTON-JOHNSON (C)	7/31/2009	14.20	10.10	56.00	361	153.0	0.63	3.50	35.0	6.90	569
	8/31/2009	3.40	3.40	56.00	543	66.0	0.53	9.90	27.8	10.90	9
	9/30/2009	3.80	3.80	53.00	481	83.0	0.53	9.40	27.8	17.70	895
	10/31/2009	3.70	3.70	133.00	561	78.0	0.55	12.50	63.0	6.30	1325
	11/30/2009	3.50	4.20	118.00	561	83.0	0.18	13.80	66.0	10.70	979
	12/31/2009	3.90	3.90	127.00	592	65.0	0.20	8.10	38.5	77.00	965
ENDICOTT (V) WPCP	1/31/2009	6.60	2.40	24.00	830	55.0	1.40	9.80	15.0	4.80	690
	2/28/2009	4.00	2.20	28.00	980	44.0	2.30	14.00	17.0	2.00	810
	3/31/2009	4.60	5.30	25.00	790	46.0	1.20	11.00	17.0	2.30	700
	4/30/2009	6.70	3.30	33.00	780	67.0	0.01	6.50	20.0	26.00	750
	5/31/2009	5.50	2.80	28.00	840	64.0	1.50	5.50	17.0	2.80	760
	6/30/2009	5.60	9.40	30.00	1300	56.0	1.60	39.00	19.0	2.80	880
	7/31/2009	6.40	2.40	24.00	860	55.0	1.20	67.00	15.0	2.40	680
	8/31/2009	6.00	3.00	36.00	1300	100.0	1.70	6.00	20.0	6.00	1200
	9/30/2009	4.50	2.60	43.00	1600	92.0	1.30	24.00	23.0	2.20	1400
	10/31/2009	4.90	4.80	59.00	1300	110.0	2.00	29.00	35.0	2.50	2200
	11/30/2009	3.10	3.60	54.00	1600	83.0	1.70	3.10	67.0	1.60	1300
	12/31/2009	7.60	1.90	61.00	1200	53.0	1.10	9.80	11.0	3.80	940
MADISON COUNTY											
CANASTOTA (V) WPCP	3/31/2009	4.00	4.00	44.00	220	55.0	0.37	8.00	13.0	15.00	154
	6/30/2009	9.60	8.00	30.00	210	42.0	0.28	8.00	20.0	19.00	350
	9/30/2009	7.00	7.00	57.00	260	49.0	0.96	7.00	23.0	7.00	465
	12/31/2009	2.00	7.00	53.00	260	54.0	0.10	8.40	17.0	41.00	830
ONEIDA (C) STP	1/31/2009	4.90	4.90	4.90	32	19.8	0.48	4.90	8.2	4.90	203
	1/31/2009	4.90	4.90	4.90	32	19.8	0.48	4.90	8.2	4.90	203
	3/31/2009	1.00	5.70	66.00	450	43.0	1.00	4.80	20.4	4.80	1024
	3/31/2009	1.00	5.70	66.00	450	43.0	1.00	4.80	20.4	4.80	1024
	5/31/2009	5.20	7.20	62.00	395	50.8	1.28	5.20	24.1	6.20	1174
	7/31/2009	4.90	10.20	58.00	471	58.0	0.53	4.90	19.9	12.10	1573
	9/30/2009	5.20	5.20	62.00	472	52.0	0.93	5.20	20.7	10.40	1844
	11/30/2009	4.70	55.00	55.00	382	27.2	0.37	4.70	15.2	24.00	1382
ONONDAGA COUNTY											
BALDWINVILLE SENECA KNOL.	1/31/2009	5.10	1.20	56.00	540	22.0	0.85	7.50	13.0	5.70	570
	1/31/2009	5.10	1.20	56.00	540	22.0	0.85	7.50	13.0	5.70	570

FACILITY NAME	DATE	Arsenic	Cadmium	Chromium	Copper	Lead	Mercury	Molybdenum	Nickel	Selenium	Zinc
DEC PRODUCT STANDARD		41	10	1000	1500	300	10	40	200	100	2500
BALDWINVILLE SENECA KNOL.	2/28/2009	4.70	1.10	46.00	530	19.0	0.65	7.30	13.0	6.40	540
	2/28/2009	4.70	1.10	46.00	530	19.0	0.65	7.30	13.0	6.40	540
	3/31/2009	4.90	1.90	80.00	710	32.0	0.94	8.80	20.0	4.90	640
	3/31/2009	5.30	1.30	46.00	610	36.0	1.20	8.60	19.0	5.30	660
	4/30/2009	4.90	1.90	80.00	710	32.0	0.94	8.80	20.0	4.90	640
	5/31/2009	6.20	1.50	51.00	640	26.0	1.10	8.40	15.0	6.20	660
	6/30/2009	5.10	0.64	72.00	770	38.0	1.20	7.90	20.0	6.10	850
	7/31/2009	4.00	2.80	51.00	630	47.0	0.78	7.60	17.0	7.30	740
	8/31/2009	4.60	0.86	49.00	640	36.0	0.90	8.30	19.0	5.20	710
	9/30/2009	5.20	1.20	50.00	630	38.0	1.00	6.60	19.0	5.40	730
	10/31/2009	5.40	1.30	45.00	580	37.0	1.00	9.80	18.0	5.70	710
	11/30/2009	6.50	0.70	91.00	750	35.0	1.10	5.90	20.0	5.10	810
	12/31/2009	4.60	0.84	59.00	730	39.0	0.91	7.20	19.0	5.10	870
METROPOLITAN SYRACUSE	1/31/2009	6.70	2.00	140.00	390	32.0	1.30	19.00	27.0	3.80	440
	2/28/2009	6.50	4.80	150.00	430	29.0	0.94	19.00	44.0	5.10	450
	3/31/2009	6.30	4.60	130.00	440	49.0	0.58	15.00	47.0	3.70	420
	4/30/2009	5.30	2.70	110.00	400	44.0	0.59	12.00	33.0	3.70	420
	5/31/2009	5.60	1.70	110.00	450	47.0	0.76	16.00	43.0	5.00	500
	6/30/2009	6.00	0.77	88.00	430	56.0	1.20	21.00	37.0	4.50	520
	7/31/2009	5.20	5.60	77.00	430	72.0	0.61	21.00	51.0	6.60	510
	8/31/2009	5.60	1.90	72.00	540	62.0	0.77	23.00	48.0	3.00	530
	9/30/2009	6.60	2.00	70.00	540	42.0	0.68	36.00	48.0	3.50	540
	10/31/2009	6.30	2.00	74.00	540	53.0	0.70	20.00	55.0	3.60	530
	11/30/2009	6.50	4.00	72.00	490	55.0	0.80	17.00	58.0	3.70	530
	12/31/2009	7.20	3.20	83.00	530	38.0	0.66	19.00	48.0	3.40	520
TIOGA COUNTY											
OWEGO (V) STP	1/31/2009	0.14	0.08	10.50	24	3.3	0.02	0.33	1.6	0.22	77
	3/31/2009	0.10	0.06	8.60	19	2.1	0.02	0.18	2.4	0.11	103
	5/31/2009	0.18	0.11	13.00	20	3.7	0.03	0.26	1.4	0.18	83
	7/31/2009	0.21	0.17	16.00	33	4.7	0.02	0.29	2.3	0.22	138
	9/30/2009	0.24	0.11	13.00	28	4.3	0.05	0.36	1.7	0.29	99
	11/30/2009	0.12	0.08	8.60	24	3.0	0.03	0.21	1.2	0.17	69

FACILITY NAME	DATE	Arsenic	Cadmium	Chromium	Copper	Lead	Mercury	Molybdenum	Nickel	Selenium	Zinc
DEC PRODUCT STANDARD		41	10	1000	1500	300	10	40	200	100	2500
DEC REGION 8											
GENESEE COUNTY											
LE ROY (V) STP	2/28/2009		8.20	15.00	670	64.0	0.96		32.0		700
	4/30/2009		8.70	8.70	490	24.0	0.40		8.7		450
	6/30/2009		3.30	15.00	660	41.0	0.95		8.1		520
	8/31/2009		3.60	10.00	720	27.0	1.00		7.2		580
	10/31/2009		1.30	7.70	560	25.0	1.20		5.3		450
	12/31/2009		1.80	8.60	550	17.0	0.53		5.3		460
ONTARIO COUNTY											
MARSH CREEK WWTP	2/28/2009	9.10	9.10	36.00	600	43.0	1.00	13.00	19.0	9.10	590
	4/30/2009	7.80	7.80	67.00	840	40.0	0.98	7.80	24.0	7.80	10
	6/30/2009	18.00	2.30	52.00	1200	44.0	1.20	14.00	15.0	8.90	730
	8/31/2009	12.00	0.86	41.00	600	35.0	0.84	14.00	16.0	5.60	600
	10/31/2009	14.00	2.60	52.00	740	36.0	1.13	23.00	15.0	7.70	6
	12/31/2009	14.00	1.30	48.00	630	25.0	0.80	20.00	16.0	6.50	610
ORLEANS COUNTY											
ALBION (V) STP	2/28/2009	1.00	1.00	38.00	470	17.0	0.41	7.10	13.0	1.00	620
	4/30/2009	3.00	3.00	27.00	390	33.0	0.75	6.70	14.0	3.70	540
	6/30/2009	9.30	2.00	41.00	510	89.0	0.27	7.20	15.0	4.10	750
	8/31/2009	5.40	3.70	45.00	690	54.0	0.58	9.60	21.0	3.00	850
	10/31/2009	3.00	3.10	29.00	500	41.0	0.56	8.00	17.0	3.00	690
	12/31/2009	7.90	4.00	29.00	420	39.0	1.60	8.70	20.0	4.00	520
MEDINA (V) WWTP	2/28/2009	8.50	5.80	50.00	500	125.0	0.62	13.00	21.0	8.50	890
	4/30/2009	18.50	6.00	56.00	580	130.0	0.50	18.00	24.0	9.40	1200
	6/30/2009	6.30	4.00	85.00	505	130.0	0.70	10.80	15.0	12.00	990
	8/31/2009	8.30	2.20	80.00	610	130.0	0.53	12.00	18.0	13.00	1100
	10/31/2009	7.60	2.00	90.00	540	130.0	0.55	12.00	16.0	12.00	12
	12/31/2009	7.80	1.70	99.00	570	96.5	0.73	16.00	22.0	11.00	1100
SENECA COUNTY											
SENECA FALLS (V) WWTP	2/28/2009	19.00	6.00	52.00	530	63.0	0.74	11.00	21.0	9.70	740
	6/30/2009	5.90	4.00	63.00	730	92.0		9.90	27.0	12.00	1100
	8/31/2009	7.20	4.00	44.00	520	79.0	0.39	6.80	21.0	6.80	750
	10/31/2009	6.00	6.00	49.00	490	74.0	0.55	6.40	24.0	6.00	900
	12/31/2009	9.50	7.00	51.00	520	53.0	0.44	7.80	18.0	59.00	710

FACILITY NAME	DATE	Arsenic	Cadmium	Chromium	Copper	Lead	Mercury	Molybdenum	Nickel	Selenium	Zinc
DEC PRODUCT STANDARD		41	10	1000	1500	300	10	40	200	100	2500
STEUBEN COUNTY											
BATH (V) WWTP	2/28/2009	4.76	0.46	9.39	148	10.8	2.07	3.19	7.9	7.61	278
	4/30/2009	21.30	1.90	47.60	7	43.5	0.32	27.50	38.3	34.10	1080
	6/30/2009	4.63	0.34	10.20	159	10.1	0.33	3.82	7.4	7.40	222
	8/31/2009	21.70	1.30	34.50	1284	46.0	0.38	11.80	31.7	34.70	1165
	10/31/2009	22.80	2.17	43.20	854	58.1	1.76	14.10	45.1	36.40	1330
	12/31/2009	23.50	1.75	25.10	568	39.7	0.77	13.20	24.5	37.60	978
HORNELL (C) WPCP	2/28/2009	0.50	0.14	1.41	20	2.3	0.20	0.30	0.8	0.80	86
	2/28/2009	0.50	0.14	1.41	20	2.3	0.20	0.30	0.8	0.80	86
	4/30/2009	15.20	2.94	44.20	498	48.6	0.64	8.75	24.5	24.30	2300
	6/30/2009	14.60	2.70	51.50	592	55.1	0.03	9.62	25.9	23.30	2690
	8/31/2009	8.80	6.04	59.00	659	142.0	2.30	13.20	28.7	14.00	1300
	10/31/2009	0.50	0.07	1.45	16	3.9	0.04	0.30	0.7	0.80	66
	12/31/2009	16.90	2.34	49.60	615	60.7	0.62	9.67	21.0	27.00	2250
WAYNE COUNTY											
ONTARIO (T) STP	3/31/2009	20.00	10.00	21.00	550	85.0	0.90	9.00	14.0	10.00	690
	6/30/2009	13.00	5.00	29.00	610	88.0	1.80	7.80	21.0	20.00	800
	9/30/2009	9.00	8.00	29.00	570	82.0	1.10	8.00	22.0	32.00	900
	12/31/2009	8.00	8.00	29.00	600	39.0	1.20	8.00	21.0	17.00	840
YATES COUNTY											
DUNDEE (V) WWTP	3/31/2009	43.00	8.00	20.00	850	77.0	2.10	8.00	41.0	8.00	780
	6/30/2009	5.00	5.00	14.00	730	48.0	1.60	6.90	17.0	5.00	590
	9/30/2009	3.00	3.00	14.00	700	50.0	2.00	3.70	18.0	8.90	540
	12/31/2009	5.50	3.00	17.00	1100	60.0	6.00	7.00	19.0	50.00	720
DEC REGION 9											
ERIE COUNTY											
AMHERST (T) WWTF #16	1/31/2009	7.90	9.50	56.80	479	30.8	2.10	9.50	15.7	7.90	725
	2/28/2009	11.00	24.60	134.00	1210	71.6	1.10	26.40	33.4	11.00	1730
	3/31/2009	12.00	12.00	60.00	520	34.8	3.00	12.00	12.0	12.00	674
	4/30/2009	5.50	8.20	66.70	542	36.6	2.30	10.40	19.1	5.50	748
	5/31/2009	11.00	11.00	55.00	435	23.7	0.80	11.00	13.0	11.00	598
	6/30/2009	9.30	9.30	73.40	577	32.9	1.60	14.90	22.4	9.30	834
	7/31/2009	6.10	6.10	48.80	486	56.1	2.40	18.90	13.4	6.10	647

FACILITY NAME	DATE	Arsenic	Cadmium	Chromium	Copper	Lead	Mercury	Molybdenum	Nickel	Selenium	Zinc
DEC PRODUCT STANDARD		41	10	1000	1500	300	10	40	200	100	2500
AMHERST (T) WWTF #16	8/31/2009	9.70	9.70	57.50	517	23.3	1.20	16.50	29.3	9.70	775
	9/30/2009	13.20	13.20	77.60	698	32.0	4.30	22.40	39.4	13.20	1050
	10/31/2009	8.90	13.30	61.30	520	24.9	2.60	19.50	16.9	8.90	734
	11/30/2009	8.40	11.70	74.10	627	26.6	1.50	22.50	26.6	8.40	850
	12/31/2009	6.40	80.60	53.30	495	40.0	1.50	22.20	14.5	6.40	685
GOWANDA (V) STP	3/31/2009	2.40	0.78	55.60	348	1.9	1.29	31.00	13.0	1.00	540
	6/30/2009	1.00	0.25	26.10	115	9.1	0.34	2.10	5.2	1.00	174
	9/30/2009	1.00	0.34	30.50	159	14.8	0.38	3.00	1.0	1.00	288
	12/31/2009	1.00	0.29	0.29	123	9.8	0.39	2.70	5.2	1.00	200
NIAGARA COUNTY											
LOCKPORT (C) WWTP	1/31/2009	4.00	1.00	42.00	344	75.0	0.65	9.00	32.0	14.00	603
	2/28/2009	10.00	2.00	51.00	34	119.0	0.85	6.00	29.0	5.00	598
	3/31/2009	4.00	1.00	44.00	403	70.0	0.61	10.00	28.0	12.00	651
	4/30/2009	0.95	2.00	37.00	296	78.0	0.47	0.60	24.0	9.00	596
	5/31/2009	10.00	1.00	33.00	314	75.0	0.58	7.00	20.0	13.00	491
	6/30/2009	10.00	2.00	32.00	309	90.0	0.50	5.00	26.0	8.00	602
	7/31/2009	10.00	2.00	44.00	385	85.0	0.90	8.00	31.0	12.00	647
	8/31/2009	10.00	2.00	5.00	33	122.0	0.80	7.00	3.0	6.00	666
	9/30/2009	10.00	2.00	40.00	299	96.0	1.21	5.00	31.0	2.00	526
	10/31/2009	10.00	2.00	25.00	230	59.0	0.50	4.00	21.0	6.00	366
	11/30/2009	10.00	2.00	29.00	288	63.0	0.74	6.00	22.0	9.00	410
	12/31/2009	3.00	1.00	45.00	366	70.0	0.95	10.00	27.0	10.00	643
NEWFANE (T) WWTP	2/28/2009	26.40	1.06	34.00	319	38.5	0.54	10.60	12.9	42.20	592
	4/30/2009	17.10	0.68	29.30	529	37.0	1.16	7.72	12.2	27.30	554
	6/30/2009	21.20	0.85	33.00	311	36.5	1.10	8.47	11.8	8.47	524
	8/31/2009	20.70	1.02	40.20	279	39.3	0.76	8.29	15.9	33.10	535
	10/31/2009	19.30	0.77	37.40	307	36.3	0.42	9.99	14.9	31.00	624
	12/31/2009	19.20	1.05	34.00	280	31.2	0.46	8.18	13.7	30.40	598
WYOMING COUNTY											
ATTICA (V) WWTP	3/31/2009	4.20	4.20	66.00	270	95.0	0.69	8.50	15.0	4.20	830
	6/30/2009	3.20	1.60	120.00	340	74.0	0.99	6.40	18.0	14.00	750
	9/30/2009	4.60	2.30	110.00	350	71.0	0.50	4.70	14.0	12.00	12
	12/31/2009	1.60	0.81	130.00	320	47.0	0.64	5.90	16.0	1.60	850