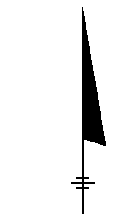
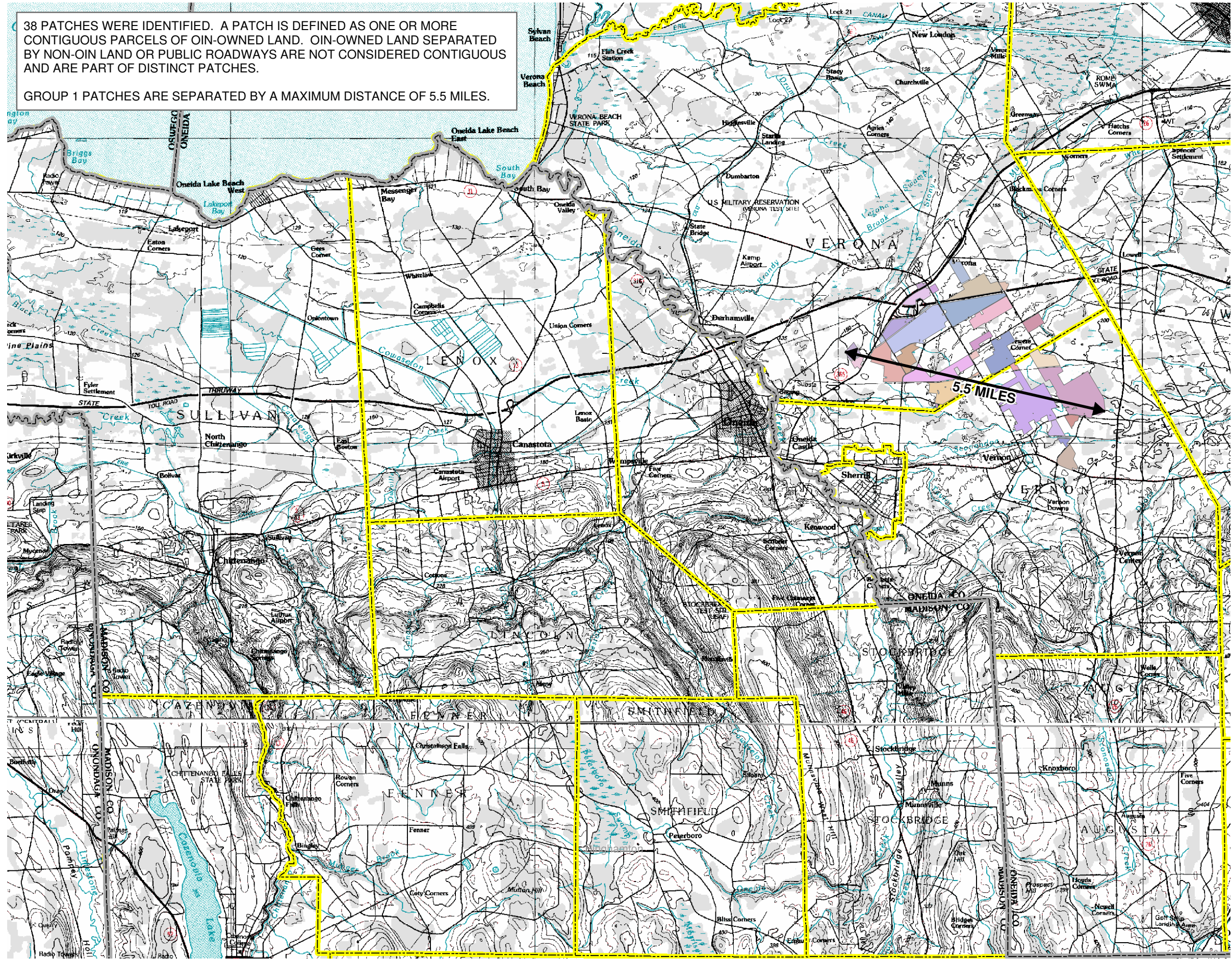





38 PATCHES WERE IDENTIFIED. A PATCH IS DEFINED AS ONE OR MORE CONTIGUOUS PARCELS OF OIN-OWNED LAND. OIN-OWNED LAND SEPARATED BY NON-OIN LAND OR PUBLIC ROADWAYS ARE NOT CONSIDERED CONTIGUOUS AND ARE PART OF DISTINCT PATCHES.

GROUP 1 PATCHES ARE SEPARATED BY A MAXIMUM DISTANCE OF 5.5 MILES.



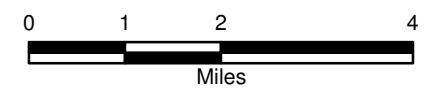
**LEGEND**

-  TOWNSHIP BOUNDARY
-  Group\_Distance
-  PATCH



**ONEIDA INDIAN NATION  
LAND TRUST APPLICATION  
GROUP 1 PARCELS**

**CONTIGUITY  
ANALYSIS**



FEBRUARY 2006  
2069.38154

