



Department of
Environmental
Conservation

Saranac Lakes Wild Forest Draft Unit Management Plan

Trail Proposals

June 7, 2017

Summary of Presentation

- This presentation was created to provide a summary of the major proposals in the UMP that deal with trails. This presentation does not list every proposal in the UMP that involves trails.

The presentation covers the following topics: trails near Scarface Mountain, trails near Lake Colby, trails near Rollins Pond, snowmobile trails, and a proposed trailless area.



Current Situation

- There are 82 miles of trails, including 46 miles used by mountain bikes
- Popular trails include:
 - Scarface Mountain
 - Deer Pond
 - Panther Mountain
 - Floodwood Mountain



Trail Changes

New Trails

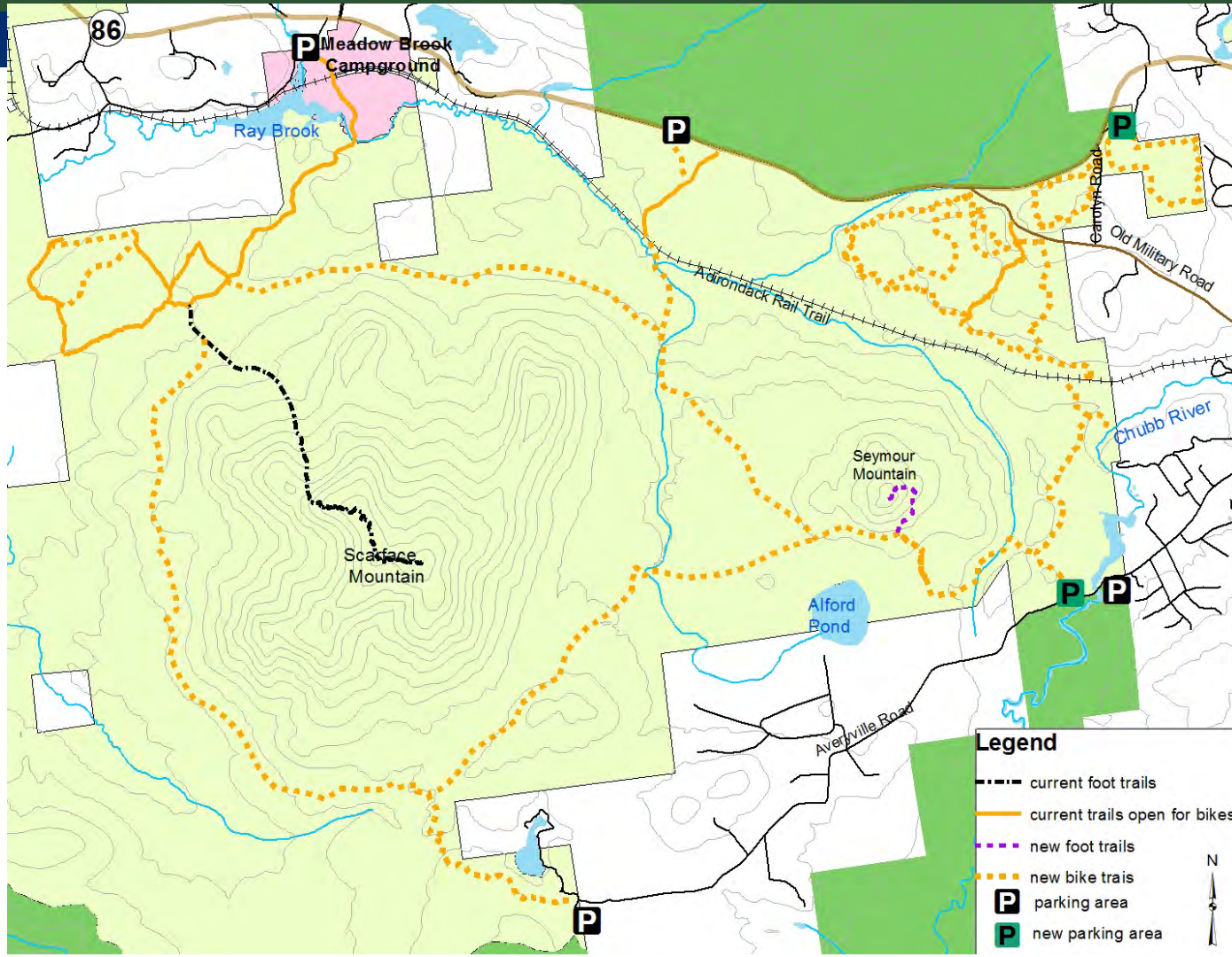
- 38 miles of new trails, including 36 miles open to mountain bikes.
- The majority of the proposed trails:
 - Are located near the communities of Saranac Lake, Lake Placid, and Tupper Lake.
 - Provide a variety of experiences for visitors of all abilities.
 - Connect to the 34-mile multi-use recreational rail trail between Lake Placid and Tupper Lake



Scarface Mountain Area

- New trails proposed:
 - Series of loops near Lake Placid.
 - Long distance loop around Scarface Mountain.
 - Foot trail to Seymour Mountain.
 - Connections with the Adirondack Rail Trail.
- 23 miles of new trails proposed in this area, 22 miles to be open to mountain biking.





Legend

- current foot trails
- current trails open for bikes
- new foot trails
- ... new bike trails
- P parking area
- P new parking area

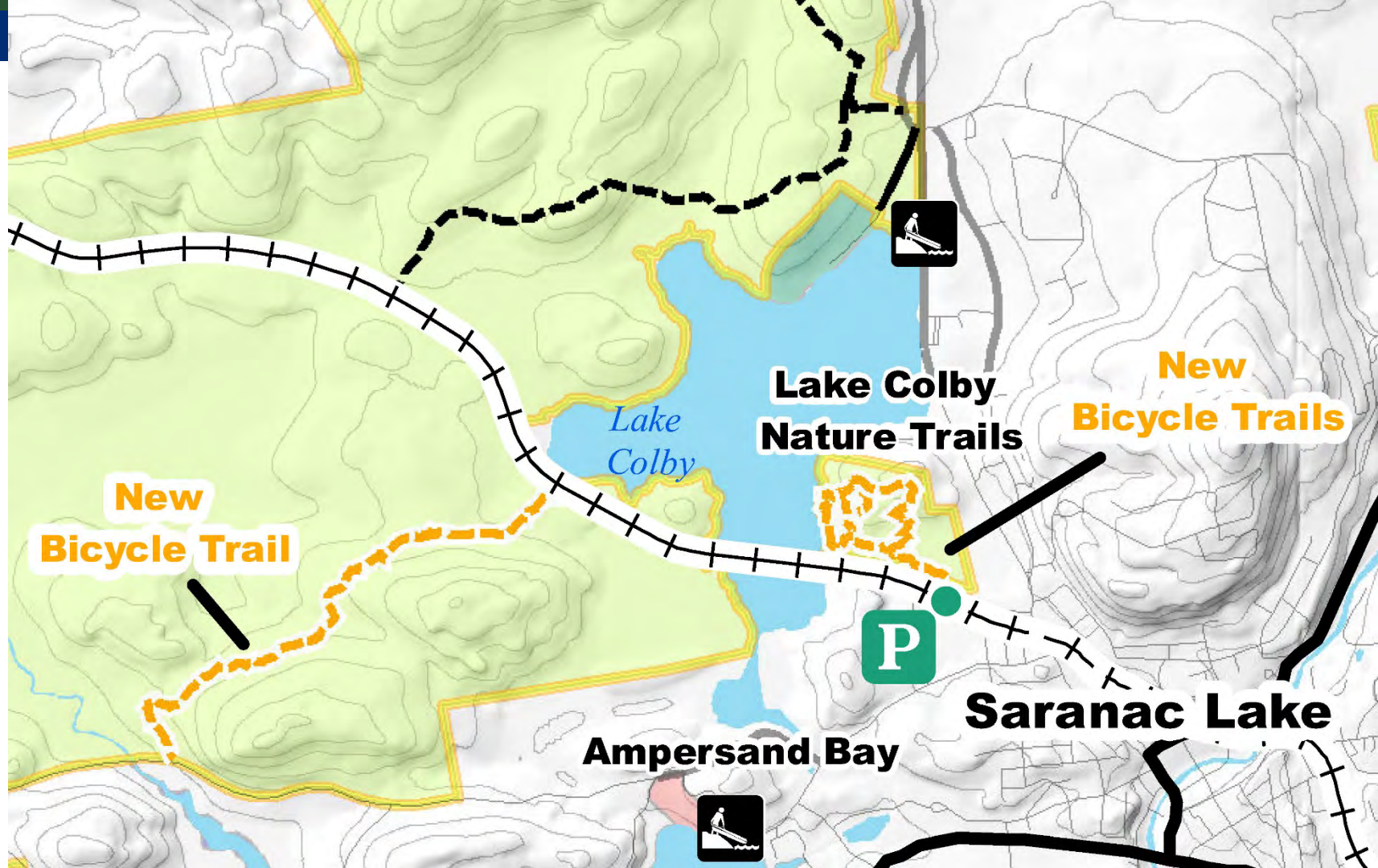


Department of Environmental Conservation

Lake Colby Area

- New trails proposed:
 - On a 50 acre parcel on the east shore of Lake Colby.
 - Provide a connection between Adirondack Rail Trail and Forest Home Road.
- Parking area is proposed at the end of Van Buren Street.
- 3.4 miles of new trail proposed in this area, all to be open to mountain biking.





**New
Bicycle Trail**

**Lake Colby
Nature Trails**

**New
Bicycle Trails**

Ampersand Bay

Saranac Lake

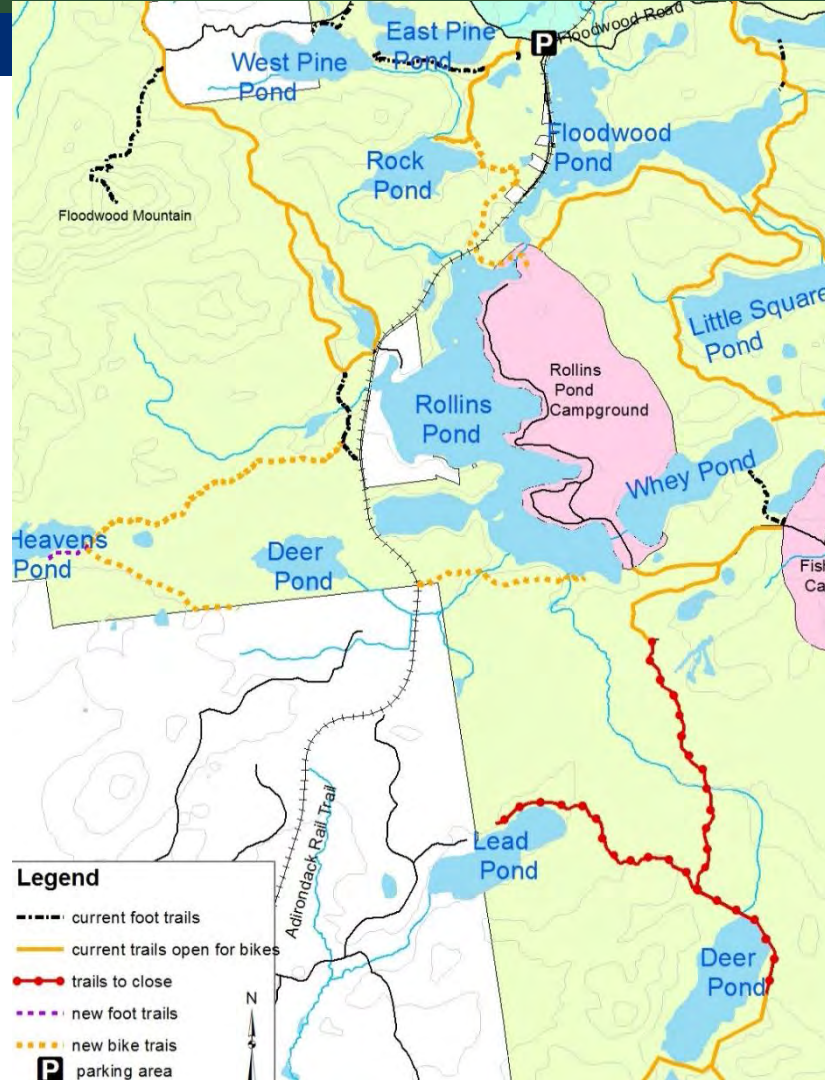
P

*Lake
Colby*

Rollins Pond / Deer Pond Area

- New trails proposed:
 - Provide a connection between the Adirondack Rail Trail and Rollins Pond / Fish Creek Campgrounds.
 - Provide access to Heavens Pond.
- 4.8 miles of new trail proposed in this area, all to be open to mountain biking.
- Close 3.4 miles of trail in order to reduce wetlands impacts.



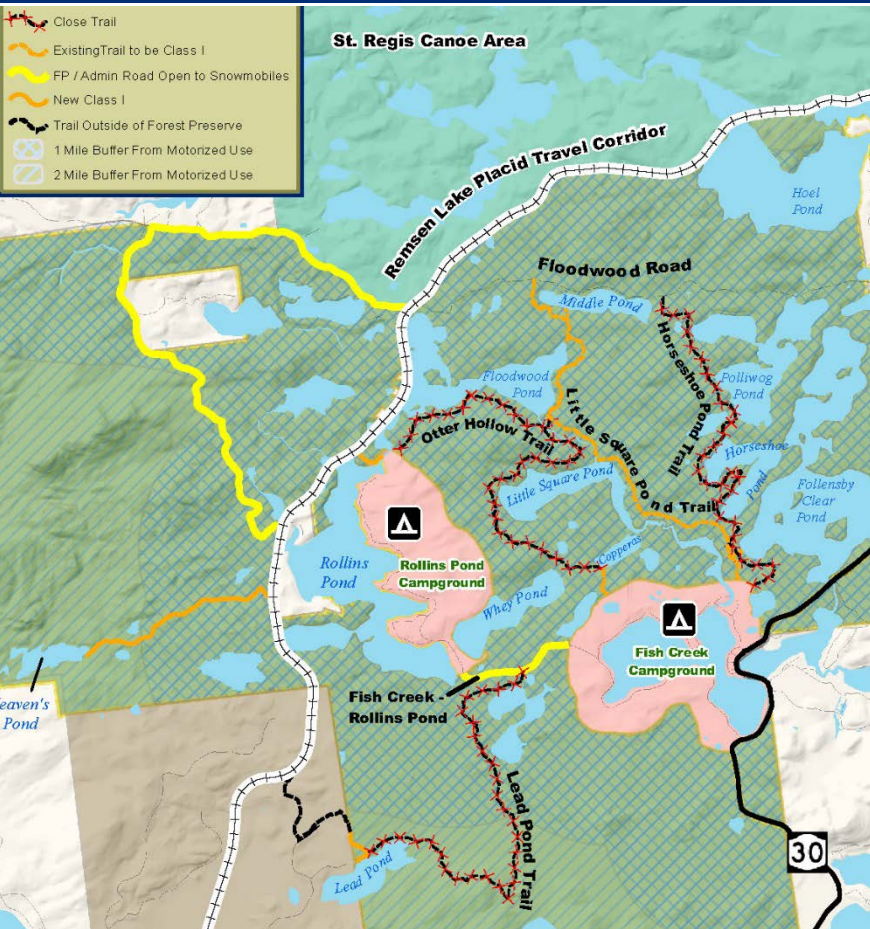


Snowmobile Trails

Management Guidance for Snowmobile Trail Siting, Construction and Maintenance

- Construct 2.18 miles of new snowmobile trail.
- Close 15.33 miles of snowmobile trail because they are in poor locations, receive low amounts of use, or are duplicative with other trails.





Changes Near Rollins Pond

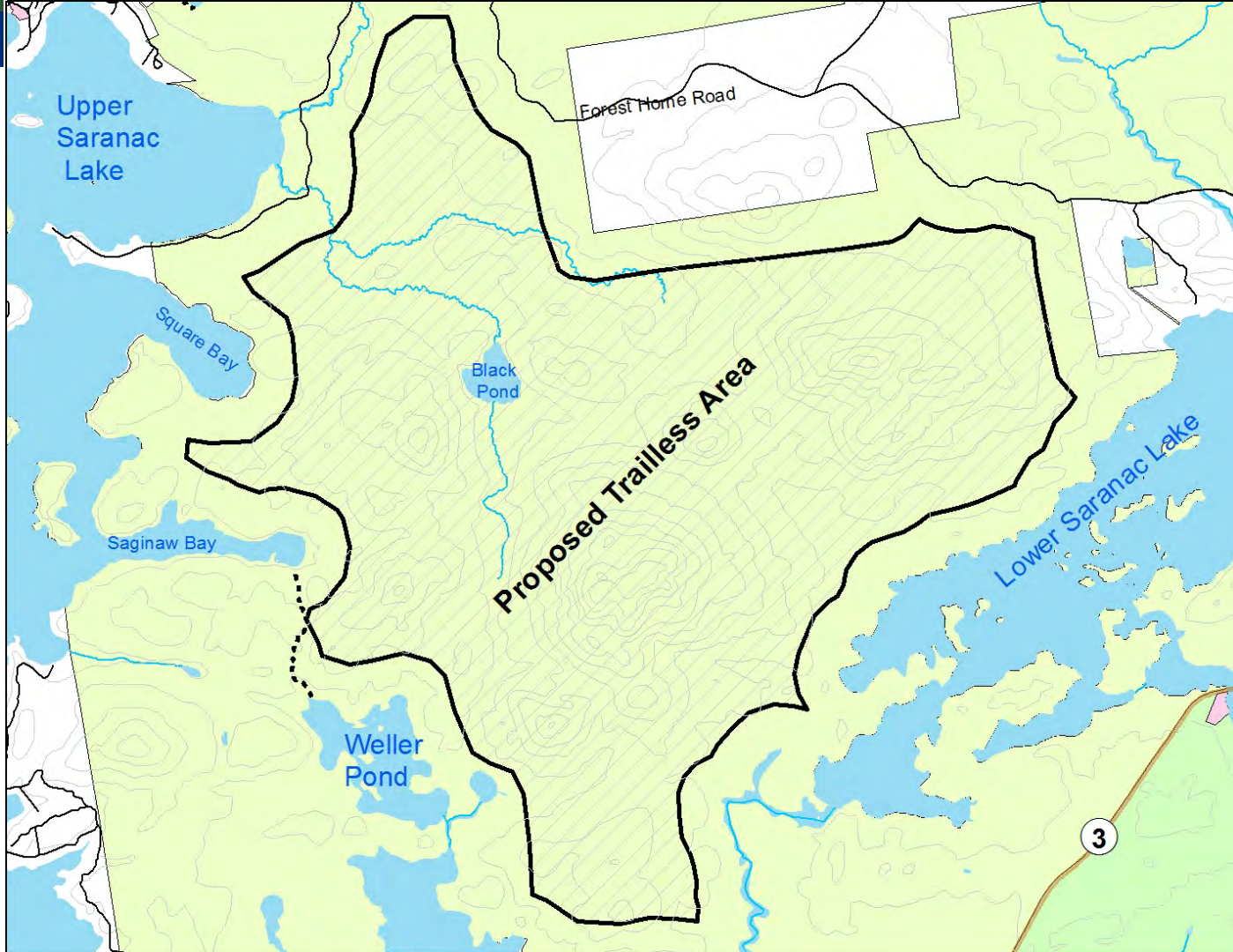
- New trail to Heavens Pond
- New trail to Lead Pond.
- Abandon current trail to Deer and Lead Ponds.
- Close redundant trails north of Fish Creek Campground.

Trailless Area

Proposed Trailless Area

- 7,400 acres of the most remote area of the unit.
- Being established to ensure opportunities for undeveloped recreation.
- Herd paths may remain.





Thank You

- Steven Guglielmi
- Forester
- 1115 NYS Route 86, PO Box 296, Ray Brook, NY 12977-0296
- Steve.Guglielmi@dec.ny.gov
- (518)897-1291

Connect with us:

Facebook: www.facebook.com/NYSDEC

Twitter: twitter.com/NYSDEC

Flickr: www.flickr.com/photos/nysdec



Department of
Environmental
Conservation