

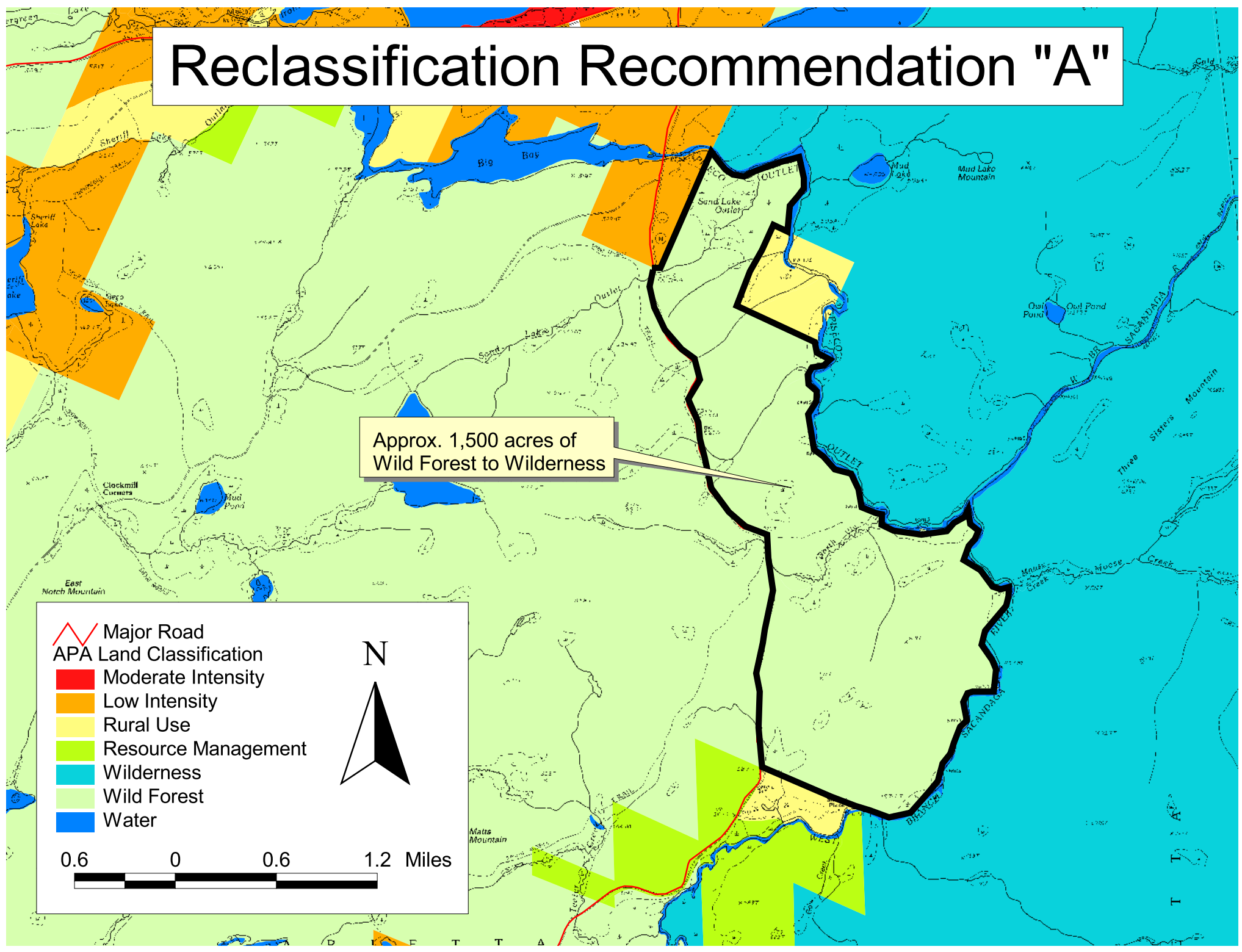
Reclassification Recommendation "A"

Approx. 1,500 acres of
Wild Forest to Wilderness

- Major Road
- APA Land Classification
 - Moderate Intensity
 - Low Intensity
 - Rural Use
 - Resource Management
 - Wilderness
 - Wild Forest
 - Water



0.6 0 0.6 1.2 Miles



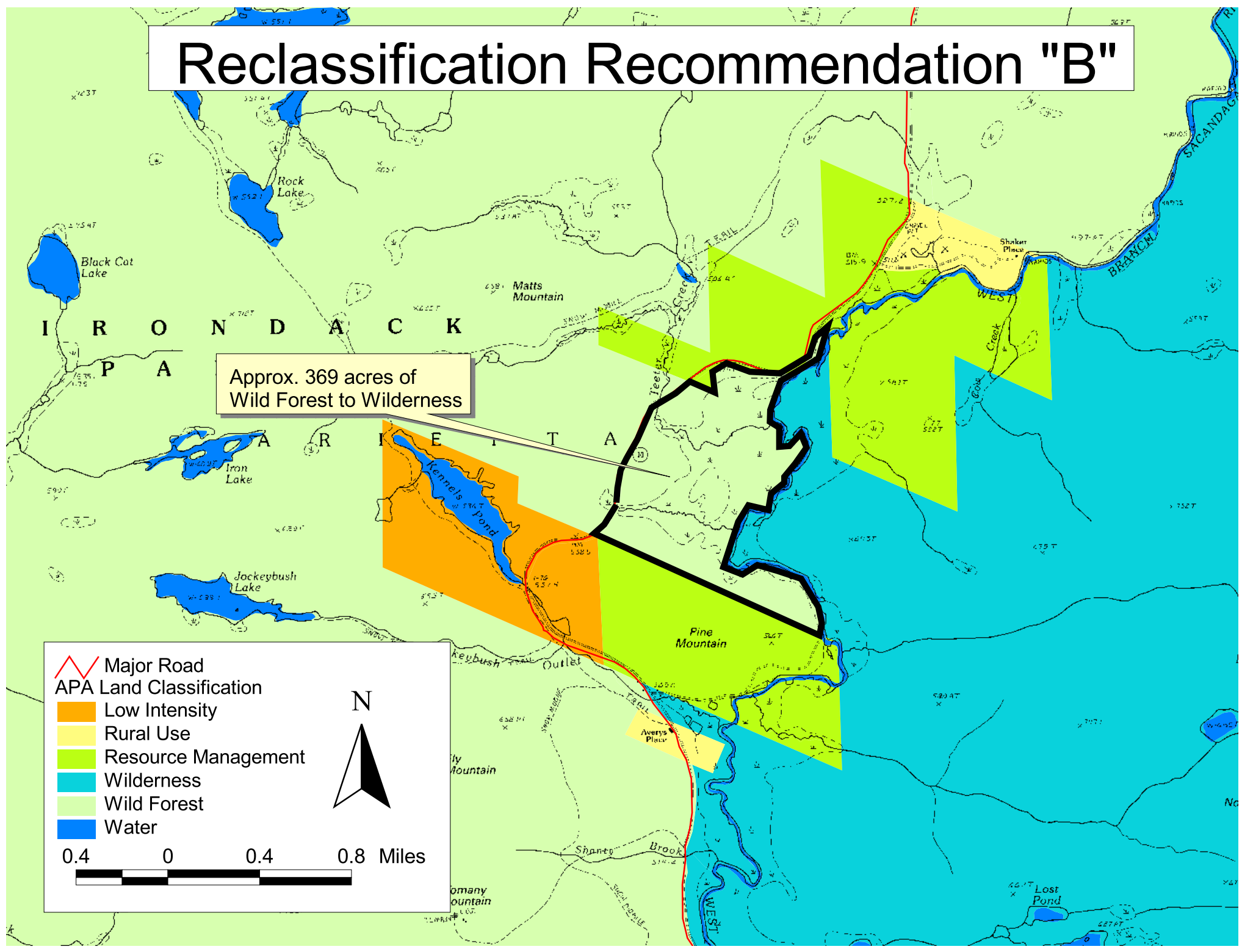
Reclassification Recommendation "B"

Approx. 369 acres of
Wild Forest to Wilderness

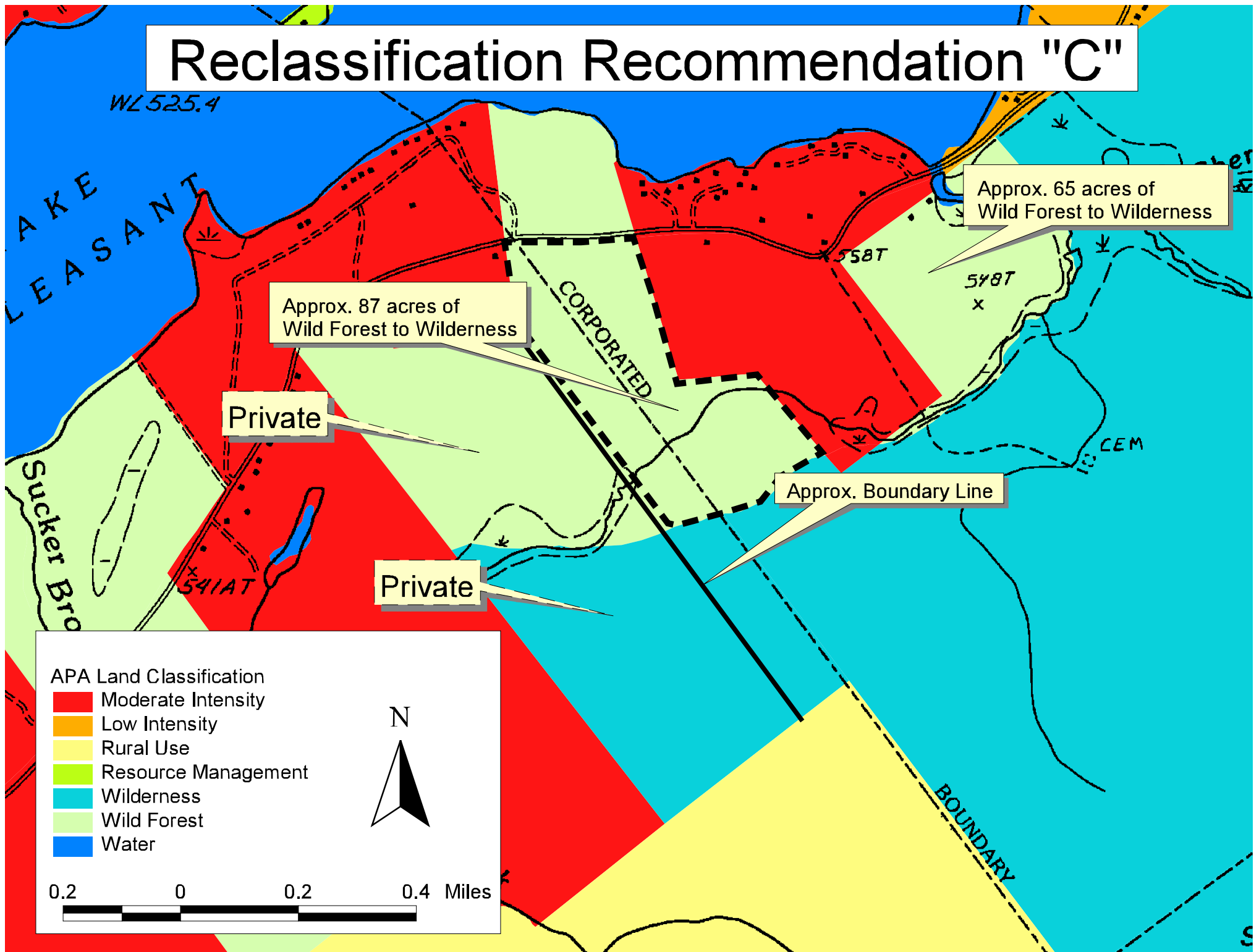
-  Major Road
- APA Land Classification
 -  Low Intensity
 -  Rural Use
 -  Resource Management
 -  Wilderness
 -  Wild Forest
 -  Water



0.4 0 0.4 0.8 Miles



Reclassification Recommendation "C"



Reclassification Recommendation "D"

Approx. 1/2 acres Unclassified
Propose Wilderness Classification

Approx. 8 acres of
Wilderness to Wild Forest

Approx. 1/2 acres Unclassified
Propose Wild Forest Classification

Approx. 16 acres of
Unclassified Lands to Wild Forest

Approx. 9 acres of
Unclassified Lands to Wild Forest

APA Land Classification

- Low Intensity
- Resource Management
- Wilderness
- Wild Forest
- Pending Classification
- Water

N

0.1 0 0.1 0.2 Miles

534AT

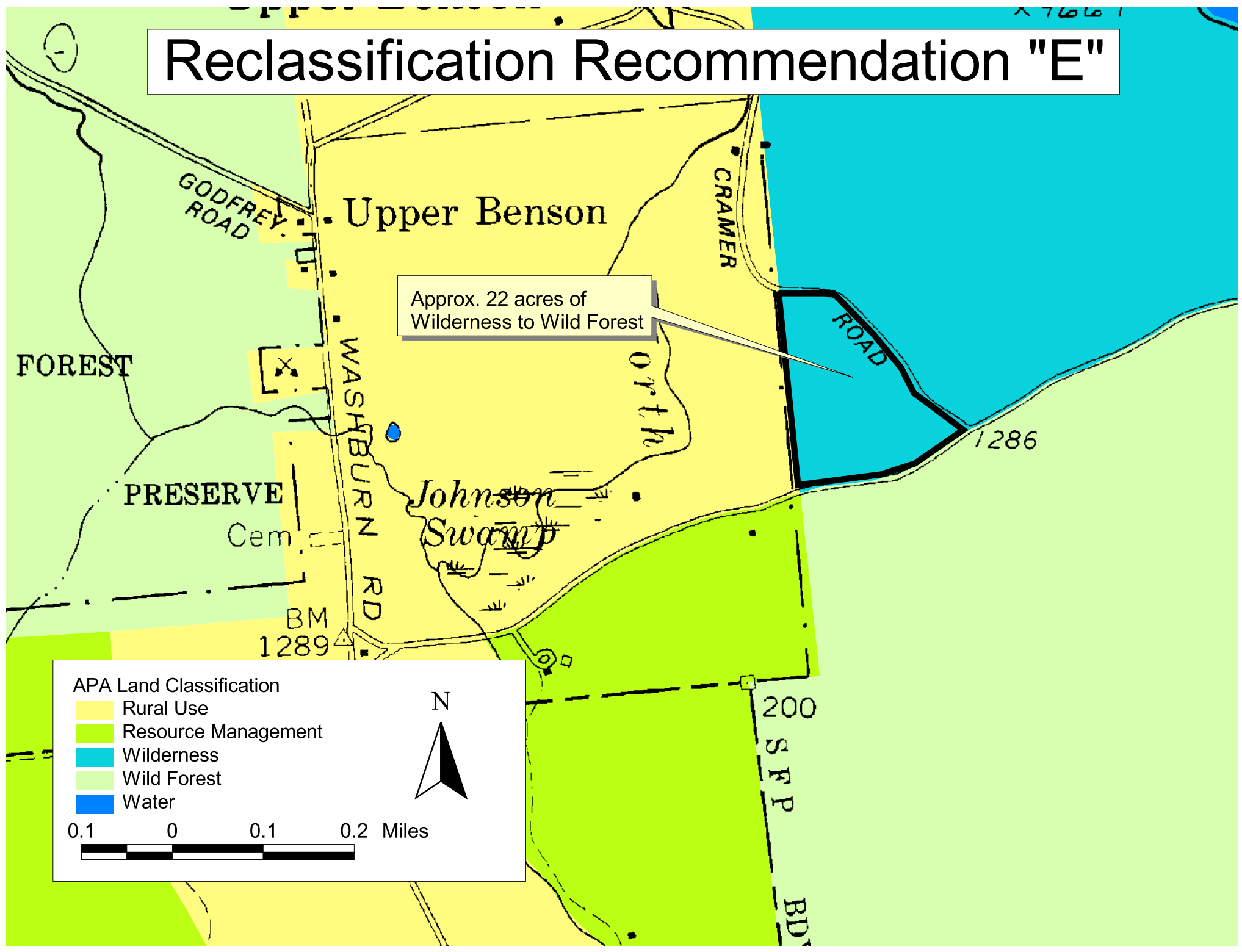
Gilman Lake

WL 5094

522.2

504AT

Reclassification Recommendation "E"



Reclassification Recommendation "F"

