

Jessup River Wild Forest- Section 1

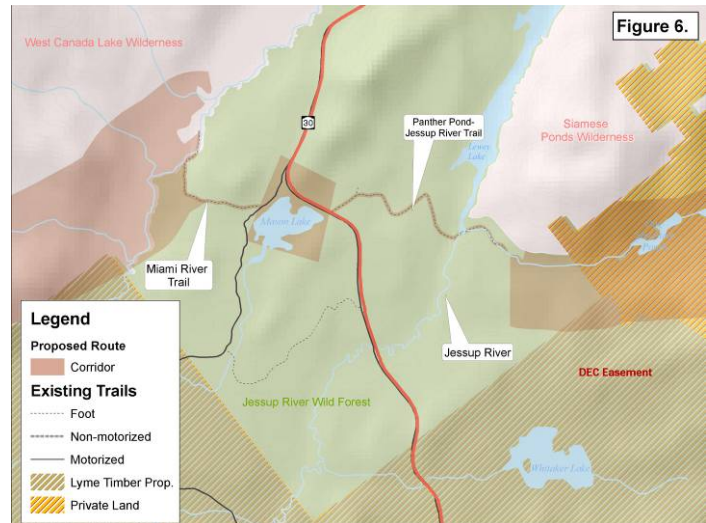
Alternative 1 (continued).

The North Country NST will enter the JRWF on its western boundary with the West Canada Lake Wilderness (per Alt. 1 WCLW). The North Country NST will follow the *Miami River Trail* to its trailhead on Perkins Clearing Rd on the northwestern shore of Mason Lake. The North Country NST will follow new trail along Mason Lake’s northern edge connecting over to the existing *Panther Pond-Jessup River Trail*.

New trail will be determined in the future to connect to the Kunjamuk Trail trailhead on the boundary of Jessup River Wild Forest and the Siamese Ponds Wilderness.

Opportunities:

1. There will be opportunities to provide informational panels to hikers on forestry techniques and forest re-growth on the Lyme Timber lands.
2. This route will provide an opportunity for more foot trail mileage in the JRWF.
3. This route will incorporate the Kunjamuk Trail trailhead in the JRWF.
4. This route will allow access, via the Elm Lake Road, to the town of Speculator.
5. This route can utilize residential roads (not shown) on Lyme Timber lands as temporary connectors until new trail is constructed.



Challenges:

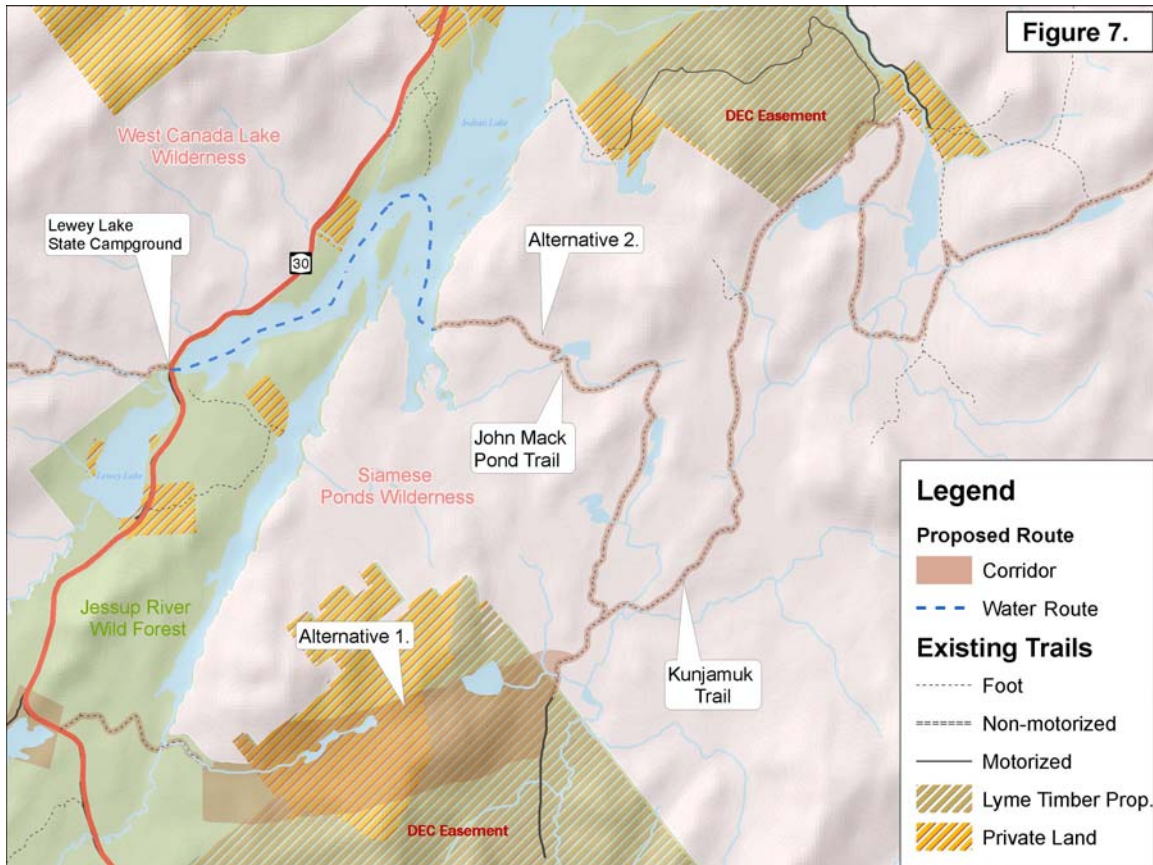
1. The Jessup River crossing on the Panther Pond- Jessup River Trail is a critical barrier to this route.

Table 8. Jessup River Wild Forest- Alternative 1

DEC Unit	Foot Trail	New Trail	Temporary Connector	Total Miles
Jessup River Wild Forest	3.5	4.7	0	8.2

Current Status of JRWF UMP- Final Plan approved in August 2006.

Siamese Ponds Wilderness Area- Section 1



Alternative 1 (continued). The route of the North Country NST enters the Siamese Ponds Wilderness Area (SPWA) from the Lyme Timber lands in the Jessup River Wild Forest to the south. Alternative 1 of the North Country NST follows the *Kunjamuk Trail*, a Class II Trail, to its intersection with the John Mack Pond Trail (per Alternative 2), approximately 1.2 miles. The Kunjamuk Trail has two established trailheads at its northern and southern termini.

Opportunities:

1. This route will utilize the Kunjamuk Trail, an existing foot trail.
2. This route will incorporate the Kunjamuk Trail trailhead in the JRWF.
3. This route will allow access, via the Elm Lake Road, to the town of Speculator.

Challenges:

1. There are no obvious obstacles to this section of the route in the SPWA.

Table 9. Siamese Ponds Wilderness Area: Alternative 1

DEC Unit	Foot Trail	New Trail	Temporary Connector	Total Miles
Siamese Ponds Wilderness Area	1.2	0	0	1.2

Alternative 2 (continued). The North Country NST will enter the SPWA on the *John Mack Pond Trail*, a Class II Trail, on the eastern edge of Indian Lake via a water crossing from the Lewey Lake State Campground. The North Country NST will follow the John Mack Pond Trail to its intersection with the Kunjamuk Trail (per Alternative 1), approximately 6.0 miles.

Opportunities:

1. This route will connect to a state-run campground.
2. This route provides a connection to the Kunjamuk Trail.
3. This route will enrich the hiking experience in the Park by incorporating a water crossing.
4. This route will connect over 50 miles of continuous existing foot trail in the West Canada Lake Wilderness and the Siamese Ponds Wilderness.
5. This route will utilize approximately 6.0 miles of the John Mack Pond Trail, an existing foot trail.

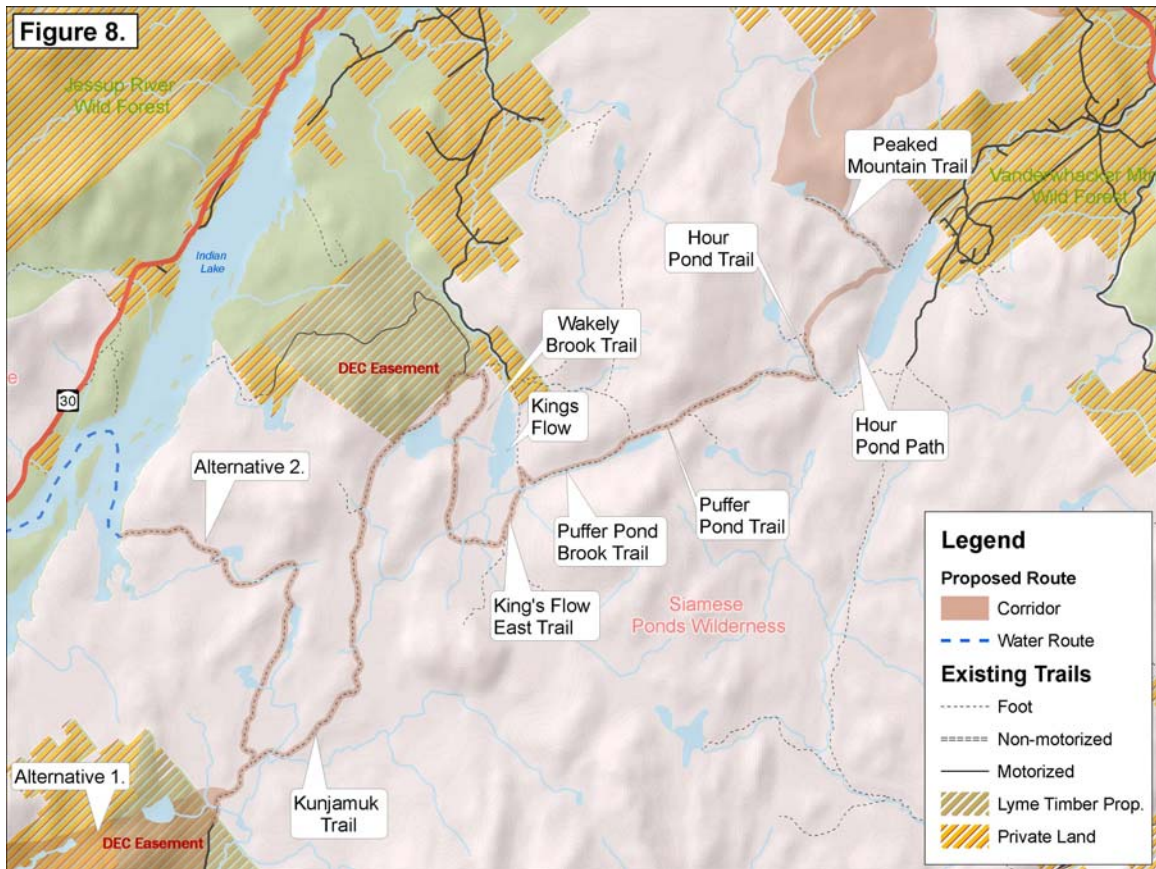
Challenges:

1. This route will require a water crossing of Indian Lake to reach the Siamese Ponds Wilderness.

Table 10. Siamese Ponds Wilderness Area: Alternative 2

DEC Unit	Foot Trail	New Trail	Temporary Connector	Total Miles
Siamese Ponds Wilderness Area	6.0	0	0	6.0

Siamese Ponds Wilderness Area- Section 2



The North Country NST will depart from the intersection of the Kunjamuk Trail and the John Mack Pond Trail, per Alternative 1 or Alternative 2 outlined previously, and will follow the Kunjamuk Trail to its intersection with the **Wakely Brook Trail** on the northwest corner of the King's Flow. The North Country NST follows the Wakely Brook Trail, which travels along the western edge of the King's Flow and wraps around its southern end, for 3.2 miles. The Wakely Brook Trail connects to the **King's Flow East Trail** on the southern end of King's Flow. At the intersection of the King's Flow East Trail and the Puffer Pond Brook Trail, the North Country NST turns east onto the **Puffer Pond Brook Trail**.

The North Country NST follows the Puffer Pond Brook Trail for 1.8 miles. The Puffer Pond Brook Trail intersects the **Puffer Pond Trail**, a Class II Trail, on the shore of Puffer Pond. From this intersection the North Country NST follows the Puffer Pond Trail for approximately 2.7 miles.

The Puffer Pond Trail intersects the **Hour Pond Trail**, a Class II Trail, and the North Country NST continues northeast from this intersection on the **Hour Pond Path** (not shown), a Class IV Trail.

The North Country NST will follow the Hour Pond Path for its full 1.6-mile length to its intersection with the *Peaked Mountain Trail*, a Class II Trail. The North Country NST will follow the Peaked Mountain Trail to the summit of Peaked Mountain.

From the Peaked Mountain summit the North Country NST will head northeasterly over new, undeveloped terrain to the Siamese Ponds Wilderness boundary, approximately 4.2 miles. From this boundary, the North Country NST will cross N.Y. State Route 28 and enter the Hudson Gorge Primitive Area.

Opportunities:

1. The Hour Pond Path foot trail will be marked for 1.5 miles along the existing herdpath from the Peaked Mountain Trail (near the shore of Thirteenth Lake) to the Hour Pond Trail.
2. The foot trail from Peaked Mountain Pond to the summit of Peaked Mountain is poorly located and severely eroded. The trail is scheduled to be relocated to follow the northern shore of Peaked Mountain Pond and continue up the western shoulder of Peaked Mountain. The new trail will be approximately 1.0 mile long and designated as a foot trail.
3. There is an existing shelter, the Western Puffer Pond Lean-to, on Puffer Pond.
4. There are trailheads/parking facilities at both ends of the Kunjamuk Trail, at the north end of Thirteenth Lake, on the north end of King’s Flow, and on N.Y. State Route 28 in the northeastern area of the unit where new trail would be constructed.

Challenges:

4. There are no identified challenges associated with the route in the SPWA.

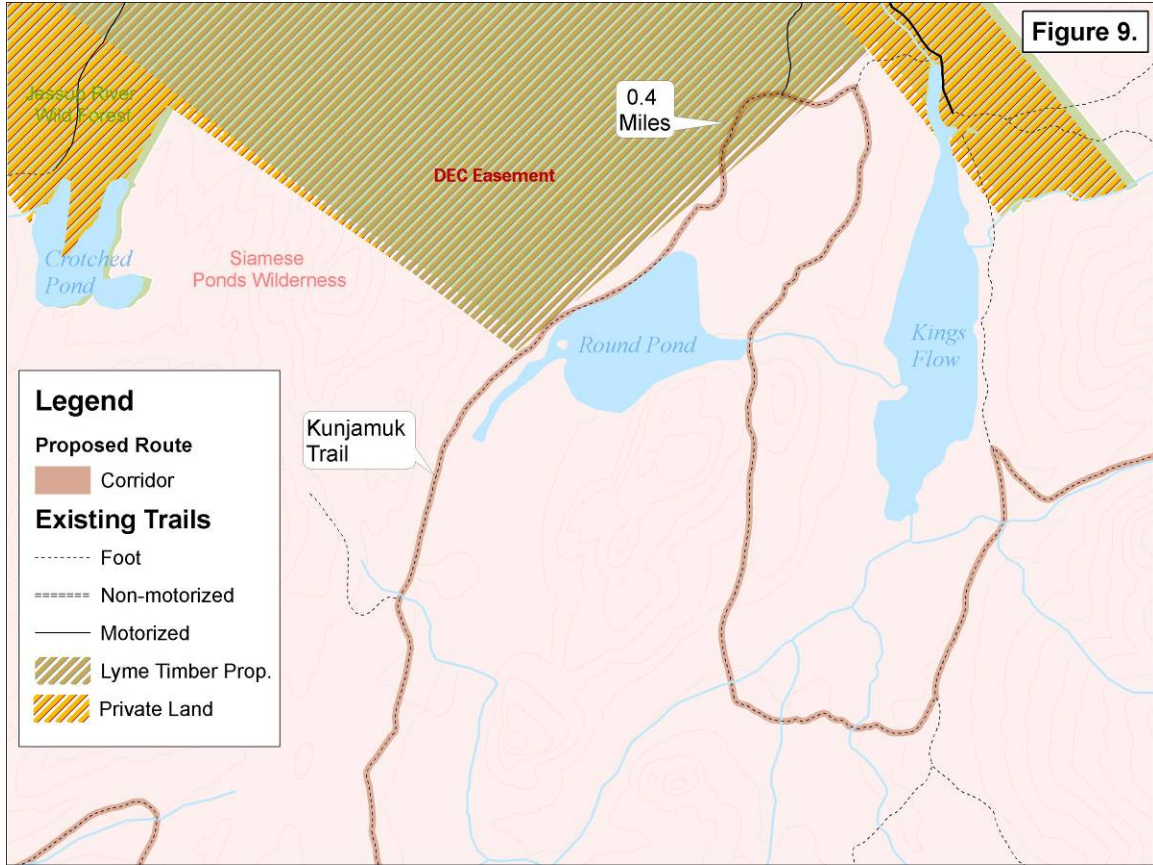
Table 11. Siamese Ponds Wilderness Area: Section 2

DEC Unit	Foot Trail	New Trail	Temporary Connector	Total Miles
Siamese Ponds Wilderness Area	19.6	4.1	0	23.7

Current Status of SPWA UMP- Final Plan approved in 2006.

Jessup River Wild Forest- Section 2

The North Country NST briefly crosses into the Jessup River Wild Forest on the Kunjamuk Trail for 0.5 miles.



Opportunities:

1. The continued use of the Kunjamuk Trail will allow this route to make a necessary connection to the Wakely Brook Trail.

Challenges:

1. There are no obvious obstacles associated with the use of this section of the Kunjamuk Trail in the JRWF.

Table 12. Jessup River Wild Forest: Section 2

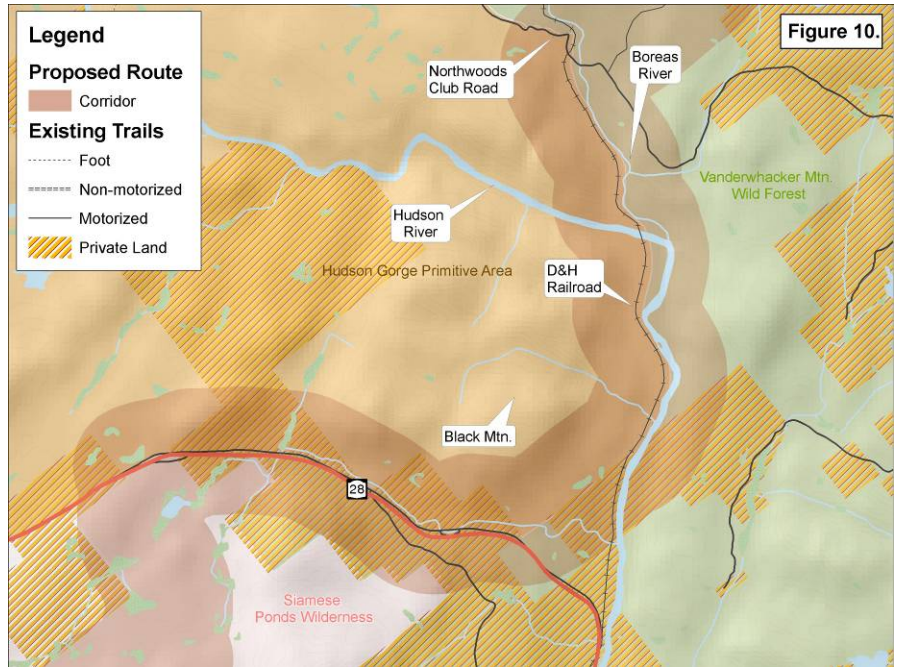
DEC Unit	Foot Trail	New Trail	Temporary Connector	Total Miles
Jessup River Wild Forest	0.5	0	0	0.5

Hudson Gorge Primitive Area

The North Country NST route will temporarily follow N.Y. State Route 28 south from a DEC parking area for approximately 2.9 miles. The North Country NST enters the Hudson Gorge Primitive Area (HGPA) off of N.Y. State Route 28.

The North Country NST will circle the southeastern base of Black Mountain on newly constructed trail for approximately 1.0 mile. The North Country NST intersects the abandoned Delaware & Hudson (D&H) Railroad on the HGPA southeastern boundary. The North Country NST will follow the D&H Railroad, paralleling the Hudson River, for 3.6 miles.

The North Country NST will leave the D&H Railroad where it intersects the Northwoods Club Road on the HGPA's northeastern boundary.



Opportunities:

1. The abandoned railbed provides a temporary connector along the Hudson River.
2. An existing railroad bridge allows for a critical crossing of the Hudson River.
3. The abandoned railbed provides a viable trail route through an otherwise very steep section of the unit.

Challenges:

1. The abandoned railbed may be designated as a motorized trail.
2. The D&H Railroad bridge will require safety railings for safe pedestrian crossing.

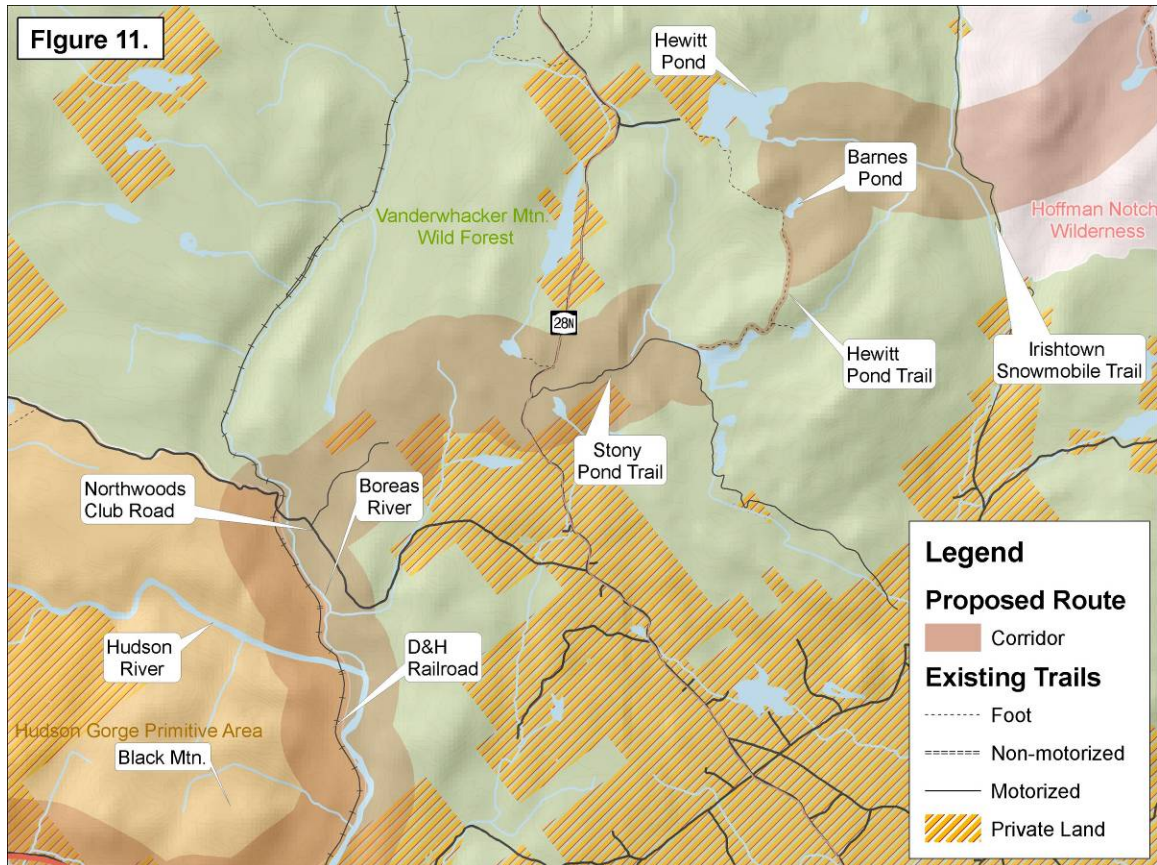
Table 13. Hudson Gorge Primitive Area

DEC Unit	Foot Trail	New Trail	Temporary Connector	Total Miles
Hudson Gorge Primitive Area	0	1.0	6.5	7.5

Current Status of HGPA UMP- New Plan anticipated in 2009.

Vanderwhacker Mountain Wild Forest

The North Country NST travels east utilizing the Northwoods Club Road as a temporary connector for approximately 0.2 miles before entering the Vanderwhacker Mountain Wild Forest (VMWF). A new snowmobile trail is being developed between Northwoods Club Road and N.Y. State Route 28N. This trail heads northeast from the Northwoods Club Road and could be utilized as a temporary connector until new foot trail is constructed.



At N.Y. State Route 28N, the North Country NST utilizes the *Stony Pond Trail* as a temporary connector heading east for approximately 1.8 miles. The Stony Pond Trail branches and the North Country NST will follow the northern branch toward Hewitt Pond.

The North Country NST follows the *Hewitt Pond Trail* before turning east just south of Barnes Pond. On new trail, the North Country NST continues northeast crossing Hewitt Pond Brook. After crossing Hewitt Pond Brook, the North Country NST intercepts an existing herdpath (not shown) on the north side of the Brook and follows that herdpath south to the *Irishtown Snowmobile Trail*.

The North Country NST crosses the Irishtown Snowmobile Trail and enters the Hoffman Notch Wilderness on its southwestern boundary.

Opportunities:

1. This route could utilize an existing herdpath for approximately 1.5 miles along the north side of Hewitt Pond Brook.
2. A road bridge, on the Northwoods Club Road, allows for a critical crossing of the Boreas River.
3. There is an existing trailhead at Hewitt Pond.
4. There is an existing lean-to at Stony Pond.
5. There are primitive campsites along the Northwoods Club Road.
6. This route utilizes the Hewitt Pond Trail, a designated foot trail.

Challenges:

1. There is a short road walk along the Northwoods Club Road before entering the VMWF.
2. The Stony Pond Trail is a designated snowmobile trail.
3. The route utilizes a newly developing snowmobile trail between Northwoods Club Road and N.Y. State Route 28N for approximately 3.3 miles.
4. A footbridge would be needed to cross Hewitt Pond Brook

Table 14. Vanderwhacker Mountain Wild Forest

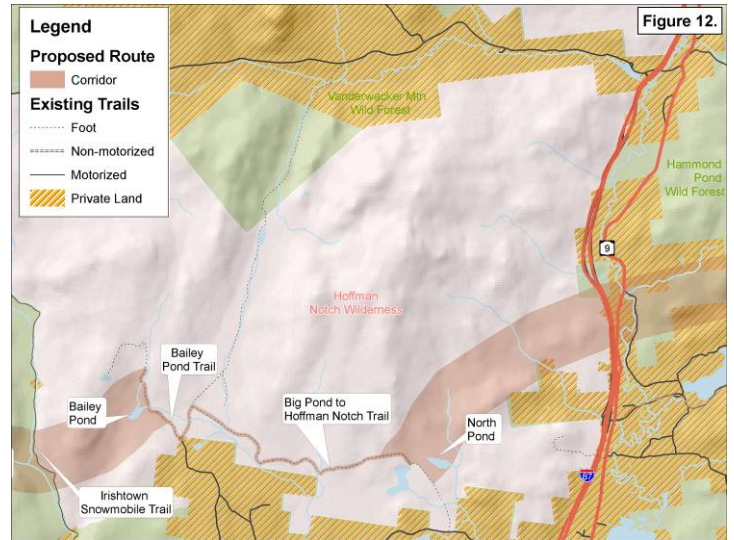
DEC Unit	Foot Trail	New Trail	Temporary Connector	Total Miles
Vanderwhacker Mountain Wild Forest	2.3	3.7	3.3	9.4

Current Status of VMWF UMP- Final Plan approved in 2005.

Hoffman Notch Wilderness Area

The North Country NST enters the Hoffman Notch Wilderness Area (HNWA) on its southwestern boundary. The trail will follow an abandoned road (not shown) north to Bailey Pond for approximately 2.6 miles. At Bailey Pond the North Country NST intersects and follows the **Bailey Pond Trail** to its intersection with the **Hoffman Notch Trail**. The North Country NST will turn north for one mile. At the next trail intersection, the North Country NST will turn east onto the **Big Pond to Hoffman Notch Trail** for approximately 6.3 miles.

The North Country NST leaves the Big Pond to Hoffman Notch Trail in the vicinity of North Pond and will require new trail northeast towards N.Y. State Route 9 on the HNWA's eastern boundary, north of the Village of Schroon Falls.



Opportunities:

1. This route could incorporate fantastic views from Jones Hill.
2. An existing abandoned road can be utilized for approximately 2.5 miles north of Bailey Pond.
3. Terrain south and north of Jones Hill is very conducive to new trail construction.
4. This route allows for a critical crossing under Interstate Highway 87 on the HNWA's eastern boundary.
5. This route utilizes 6.3 miles of existing foot trail in the unit.

Challenges:

5. There are no identified challenges associated with this route.

Table 15. Hoffman Notch Wilderness Area

DEC Unit	Foot Trail	New Trail	Temporary Connector	Total Miles
Hoffman Notch Wilderness Area	6.3	6.7	0	13.0

Current Status of HNWA UMP- New Plan anticipated for 2008.

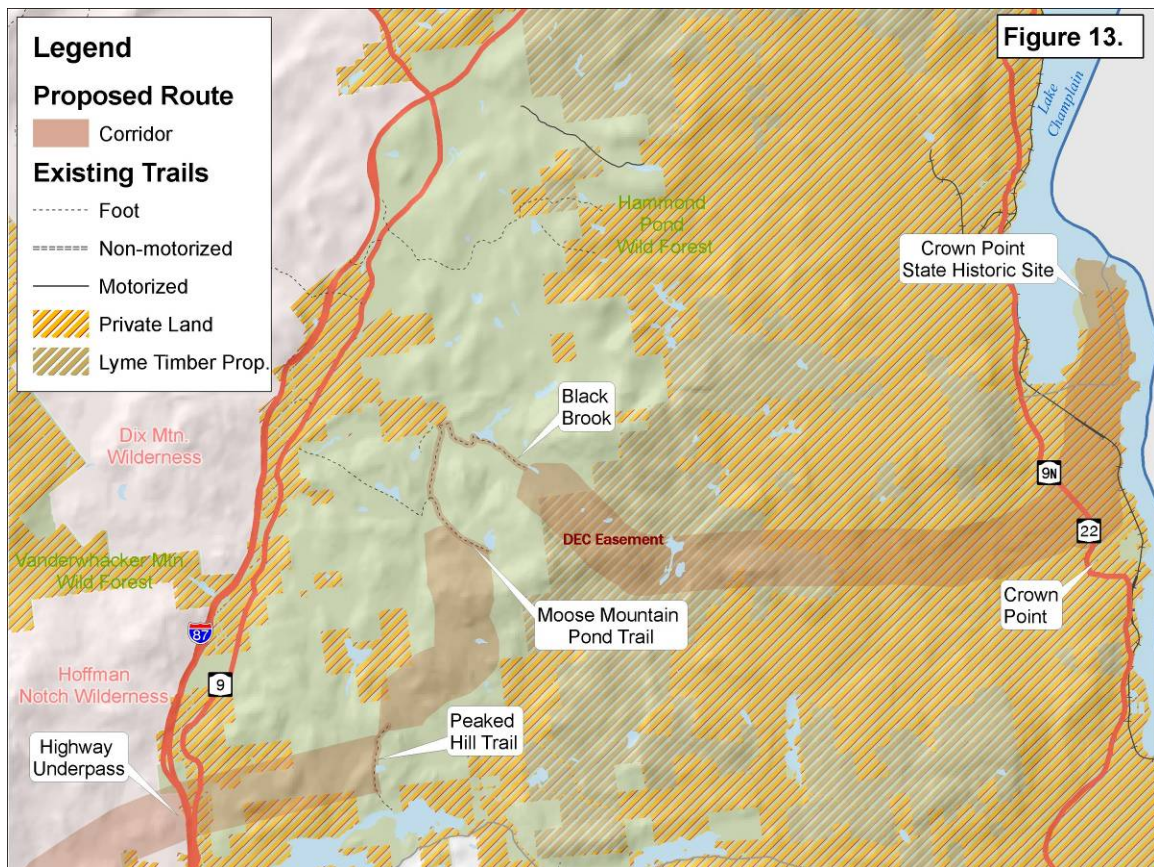
Hammond Pond Wild Forest

The North Country NST enters the Hammond Pond Wild Forest (HPWF) on its western boundary just north of the Hamlet of Schroon Lake and the Hamlet of Severance. The North Country NST passes under Interstate 87 via a highway underpass and crosses N.Y. State Route 9 and continues on new trail for approximately 3.4 miles. The North Country NST will then intersect the *Peaked Hill Trail*. The North Country NST turns north following the Peaked Hill Trail to the summit of Peaked Hill.

From the summit of Peaked Hill, the North Country NST heads northeast on new trail for approximately 3.8 miles toward the *Moose Mountain Pond Trail*.

The North Country NST will intersect the Moose Mountain Pond Trail before heading east into the Lyme Timber lands.

After crossing through Lyme Timber lands, the North Country NST will utilize temporary road connectors (not shown) to reach the Crown Point State Historic Site on Lake Champlain.



Opportunities:

1. Opportunities for new trail construction exist on Lyme Timber lands in the eastern part of the unit.
2. This route allows for a connection to Crown Point State Historic Site, preferred eastern terminus of the North Country NST.
3. This route would incorporate the summit of Peaked Hill.
4. This route would overlap the Moose Mountain Pond Trail.
5. This route utilizes a critical highway underpass on Interstate 87.

Challenges:

1. There are no identified challenges associated with the route in HPWF.

Table 16. Hammond Pond Wild Forest

DEC Unit	Foot Trail	New Trail	Temporary Connector	Total Miles
Hammond Pond Wild Forest	6.1	13.5	11.2	30.8

Current Status of HPWF UMP- estimated re-write of Plan in 2008.

Total Mileage Tables

Table 17. Alternative 1: Total Mileage

DEC Unit	Foot Trail	New Trail	Temporary Connector	Total Miles
Black River Wild Forest	5.1	8.9	2.5	16.5
West Canada Lake Wilderness	23.0	6.7	0.1	29.8
Moose River Plains Wild Forest	0	0	4.2	4.2
Jessup River Wild Forest	3.5	4.7	0	8.2
Siamese Ponds Wilderness	20.3	4.2	0	24.5
Hudson Gorge Primitive Area	0	1.0	6.5	7.5
Vanderwhacker Mountain Wild Forest	2.3	3.7	3.3	9.4
Hoffman Notch Wilderness	6.3	6.7	0	13.0
Hammond Pond Wild Forest	6.1	13.5	11.2	30.8
TOTALS	66.6	49.4	27.8	143.8

Table 18. Alternative 2: Total Mileage

DEC Unit	Foot Trail	New Trail	Temporary Connector	Total Miles
Black River Wild Forest	5.1	8.9	2.5	16.5
West Canada Lake Wilderness	29.4	3.7	0.1	33.2
Moose River Plains Wild Forest	0	0	4.2	4.2
Jessup River Wild Forest	0	0	0	0
Siamese Ponds Wilderness	25.4	4.2	0	29.6
Hudson Gorge Primitive Area	0	1.0	6.5	7.5
Vanderwhacker Mountain Wild Forest	2.3	3.7	3.3	9.4
Hoffman Notch Wilderness	6.3	6.7	0	13.0
Hammond Pond Wild Forest	6.1	13.5	11.2	30.8
TOTALS	74.5	41.7	27.8	144.1

Page Intentionally Left Blank